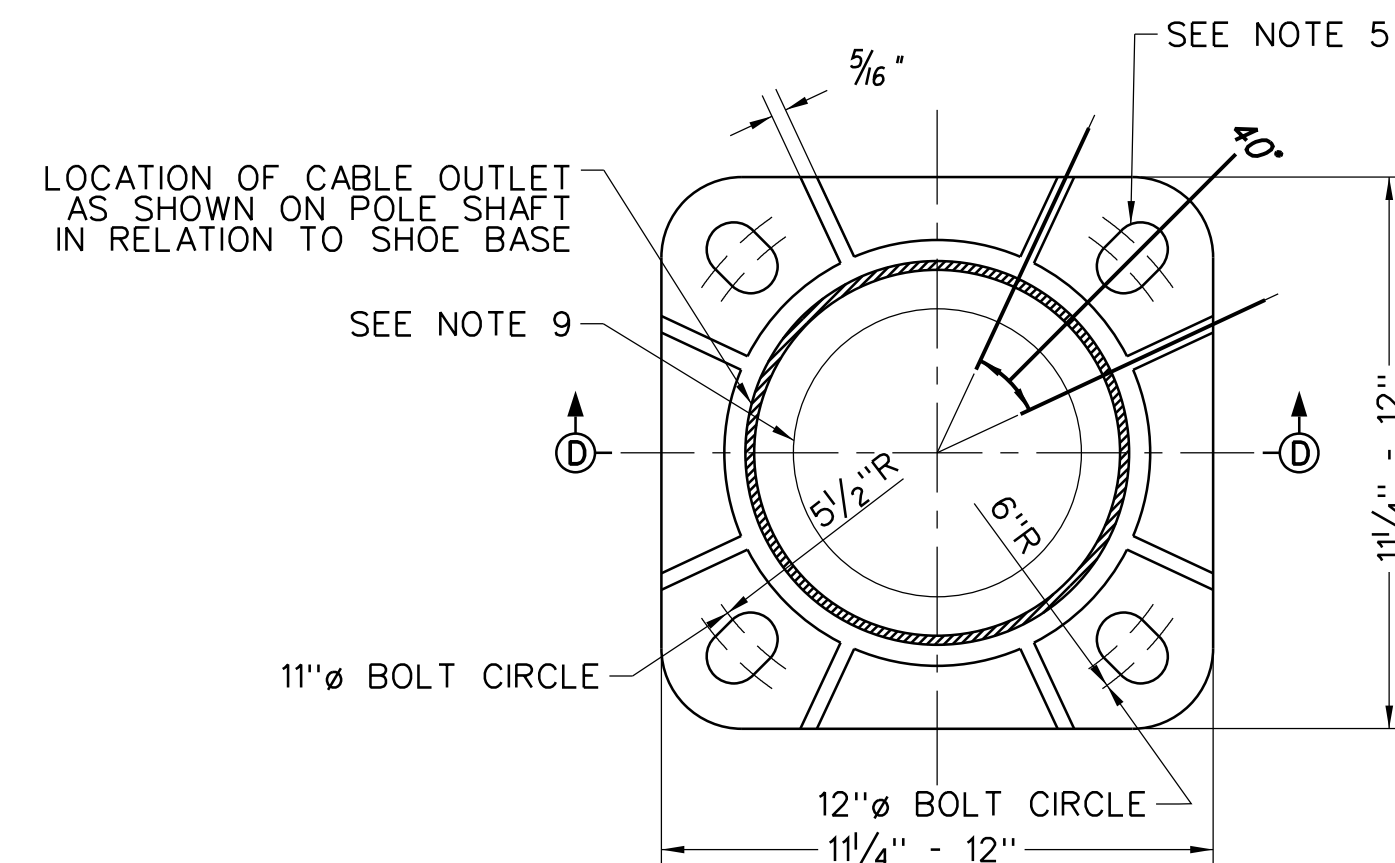
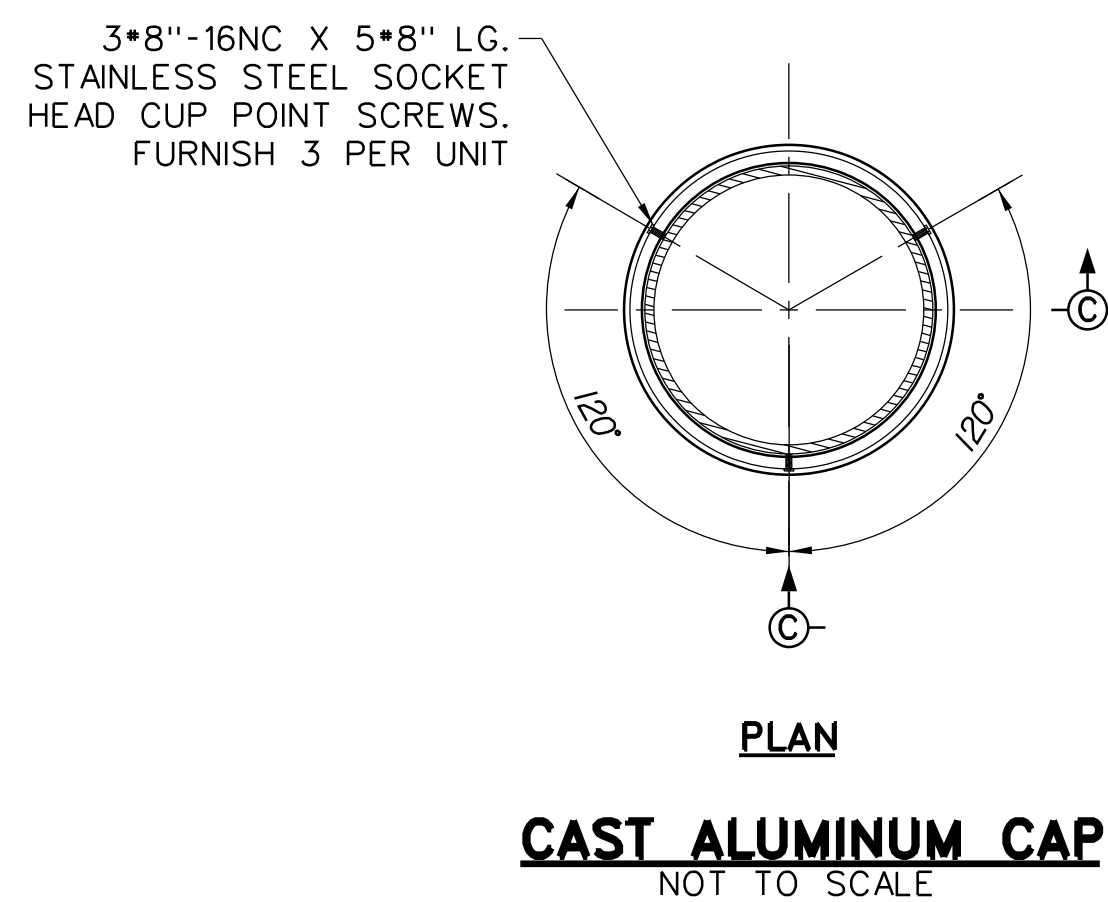
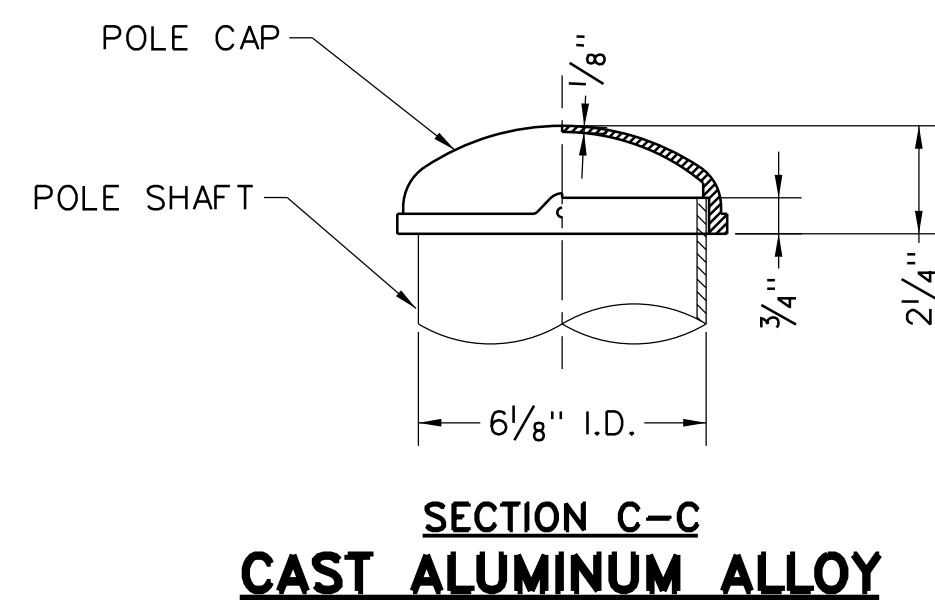
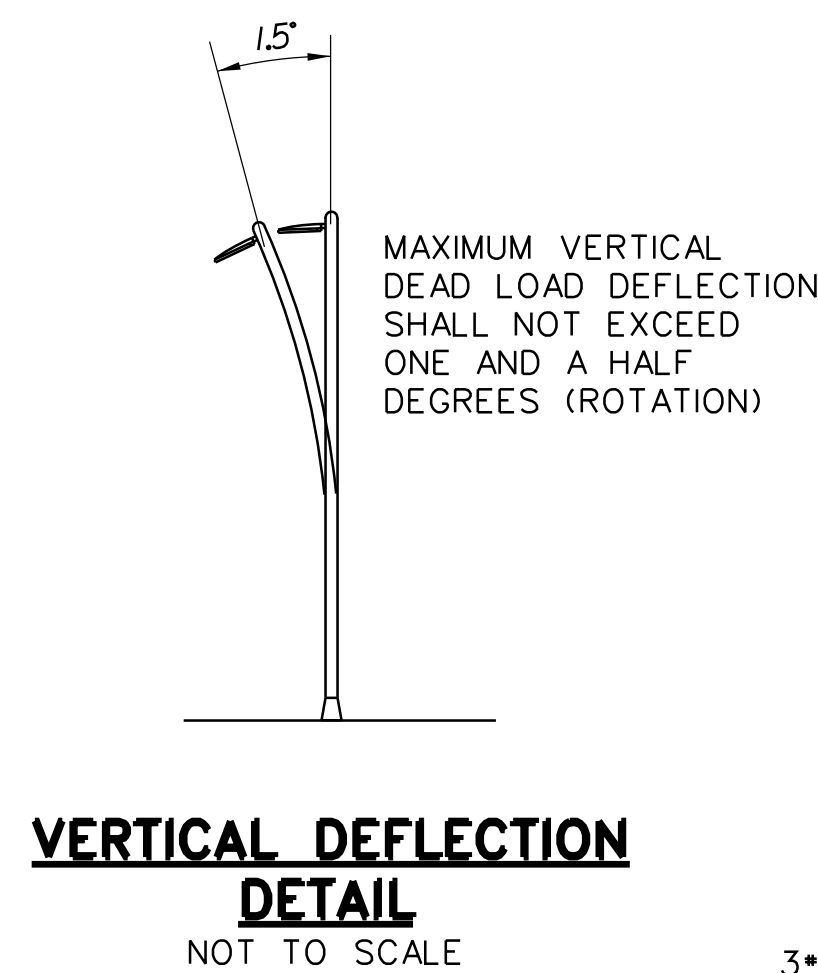
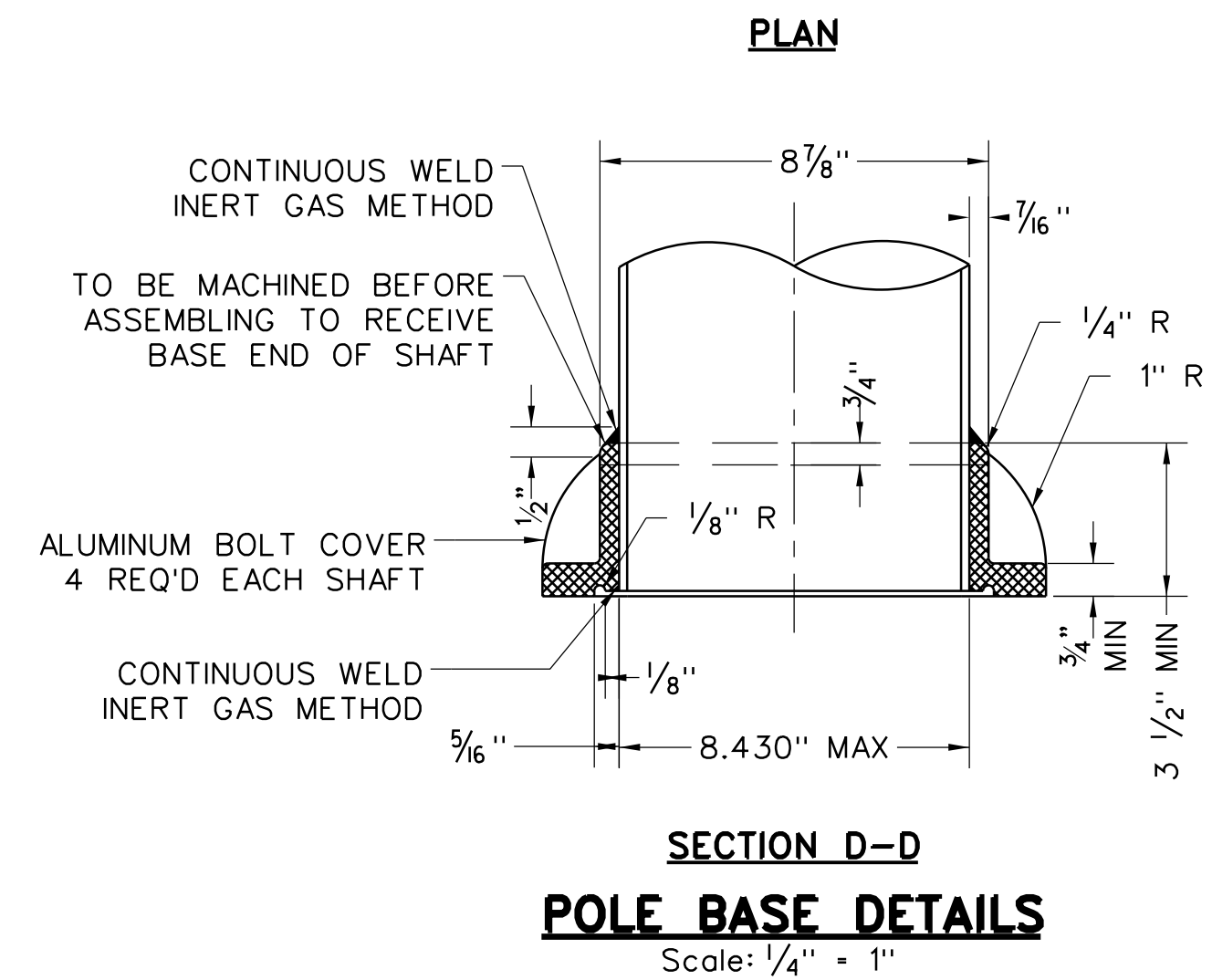


ALUMINUM LIGHTING STANDARD
SCALE: 3/4" = 1'

SCHEDULE 3.1						
TYPES	* OF LUMINAIRES	SHAFT DIMENSIONS			MAX. LUMINAIRE SIZE (INDIVIDUAL LUMINAIRE)	
		TAPER	MIN. WALL THICKNESS	LENGTH	WEIGHT	PROJ. AREA SQ. FT.
L-MG-26	1	8"x6"	.188"	22'	60*	2.5
L-MG2-26	2	8"x6"	.188"	22'	60*	2.5
L-MG3-26	3	8"x6"	.188"	22'	60*	2.5
L-MG-40	1	8"x6"	.250"	37'	60*	2.5
L-MG2-40	2	8"x6"	.250"	37'	60*	2.5
L-MG3-40	3	8"x6"	.250"	37'	60*	2.5

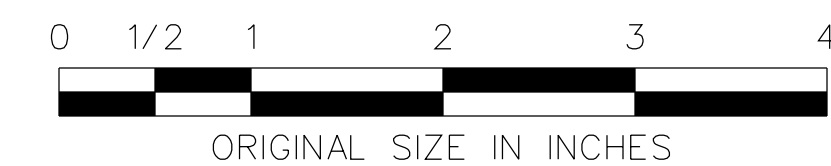


ALUMINUM ALLOY 356-T6 ASTM SPEC NO. SAND
CST'G B26 OR PERM. MOLD CST'G B108 ASTM
ALLOY DESIG. SG 70A



NOTES

- CERTIFICATIONS SHALL BE FURNISHED THAT ALUMINUM ALLOY AND TEMPER SHOWN MEET REQUIREMENTS AS SET FORTH BELOW OR AS OTHERWISE INDICATED ON DRAWING. ALUMINUM CASTINGS, PERMANENT OR SAND MOLD FOR POLE BASE, TRADE DESIGNATION 356-T6.
- FURNISH WITH EACH POLE:
 - FOR LUMINAIRE MOUNTING ASSEMBLY TO POLE: ALL HARDWARE LISTED ON STD. DWG. E-04 DETAILS.
 - FOR POLE CONNECTION TO TRANSFORMER BASE: ALL HARDWARE AS SHOWN ON STD. DWG. E-09
- ALUMINUM LIGHTING STANDARD ASSEMBLY AND ALL APPURTENANCES SHALL BE DESIGNED TO SUPPORT LUMINAIRE(S) OF THE WEIGHT AND PROJECTED AREA AS CALLED FOR IN SCHEDULE 3.1 ON THIS SHEET. SCHEDULE 2.1 MAY BE FOUND ON STANDARD DRAWING E-02.
- UNTAPERED 8" DIA. SECTION ON THE 37' SHAFT WILL BE PERMITTED, BUT UNTAPERED SECTION SHALL NOT EXCEED 25' MAXIMUM FROM BASE OF THE SHAFT.
- FOR BASE ATTACHMENT DETAILS, USE TB-A DETAIL AS SHOWN ON STANDARD DRAWING E-09.
- A GROUND STUD SHALL BE INSTALLED OPPOSITE THE TRANSFORMER BASE DOOR.
- GROUND-MOUNTED LIGHTING STANDARD ASSEMBLIES SHALL BE PROVIDED WITH TRANSFORMER BASES, AND SHALL BE CERTIFIED BY THE FHWA AS AN APPROVED BREAKAWAY ROADSIDE HARDWARE DEVICE TO THE MOST CURRENT AASHTO STANDARDS.
- LIGHTING STANDARDS SHALL BE DESIGNED AND MANUFACTURED IN ACCORDANCE WITH THE AASHTO STANDARD SPECIFICATIONS FOR STRUCTURAL SUPPORTS FOR HIGHWAY SIGNS, LUMINAIRES AND TRAFFIC SIGNALS (LATEST EDITION). FEATURES OF DESIGN NOT SHOWN BUT REQUIRED FOR FABRICATION SHALL BE DESIGNED IN ACCORDANCE WITH CODES SPECIFIED ON THIS SHEET.
- OPENING SHALL HAVE A MINIMUM DIAMETER OF 6". THE GEOMETRY SHALL BE DETERMINED BY THE MANUFACTURER.
- ALL DIMENSIONS OF CASTINGS SHALL BE +1/32" AND -0".
- THE MANUFACTURER SHALL SUPPLY ALL HARDWARE WHICH IS NECESSARY TO INSTALL THE POLE.
- ALL STAINLESS STEEL HARDWARE SHALL BE TYPE 304 IN ACCORDANCE WITH ASTM A193 GRADE B8.
- PROVIDE LUMINAIRE MOUNTING ASSEMBLIES AS REQUIRED BY THE CONTRACT PLANS.
- FOR POLES OTHER THAN 6" O.D., THE LUMINAIRE MOUNTING ASSEMBLY I.D. SHALL BE ADJUSTED ACCORDINGLY. CONFIRM AND COORDINATE PRIOR TO FABRICATION.
- SEE STANDARD DRAWING E-04 FOR POLE TOP LUMINAIRE MOUNTING ASSEMBLY DETAILS.



NEW JERSEY TURNPIKE AUTHORITY
NEW JERSEY TURNPIKE GARDEN STATE PARKWAY
STANDARD DRAWINGS

ALUMINUM LIGHTING STANDARD

OFFICE OF THE CHIEF ENGINEER
NEW JERSEY TURNPIKE AUTHORITY
WOODBRIIDGE, NEW JERSEY

STANDARD DRAWING

E-03

REV.	DESCRIPTION	DATE
0	REISSUED DRAWING	09/21