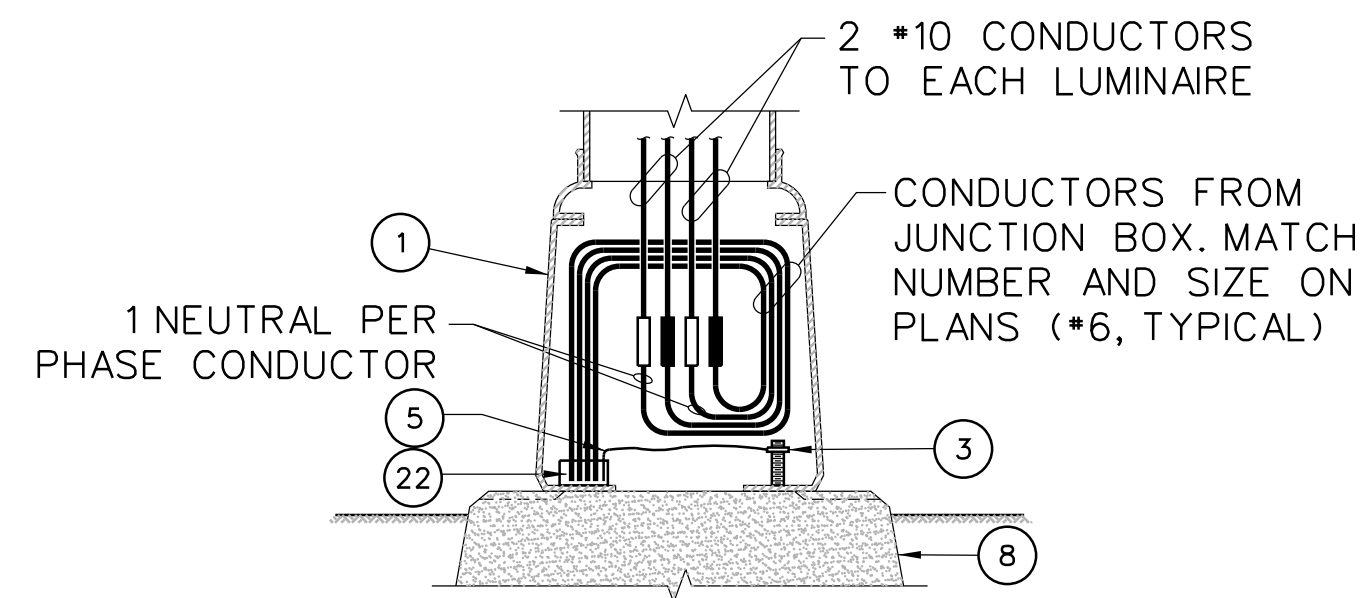


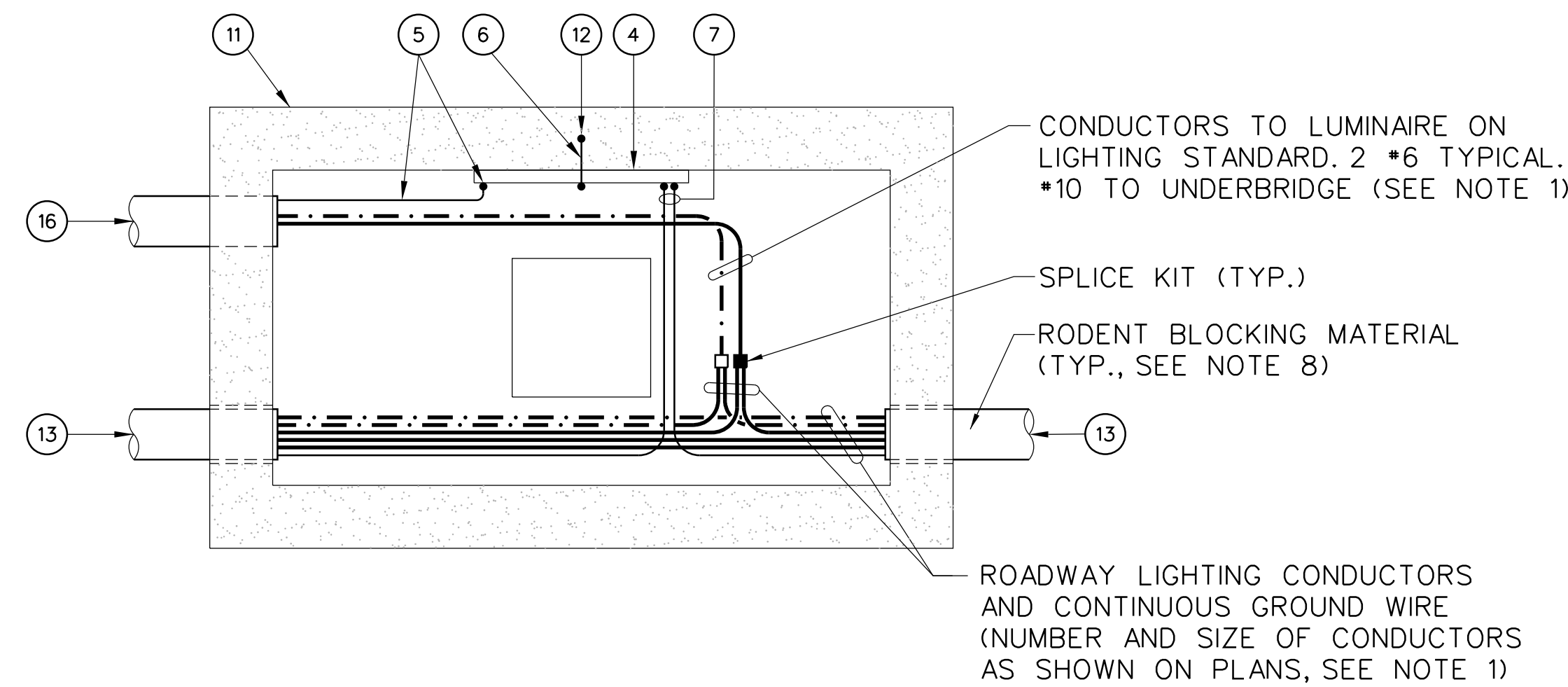
**SINGLE LUMINAIRE LTG. STANDARDS**



**LTG. STANDARDS WITH TWO OR MORE LUMINAIRES**

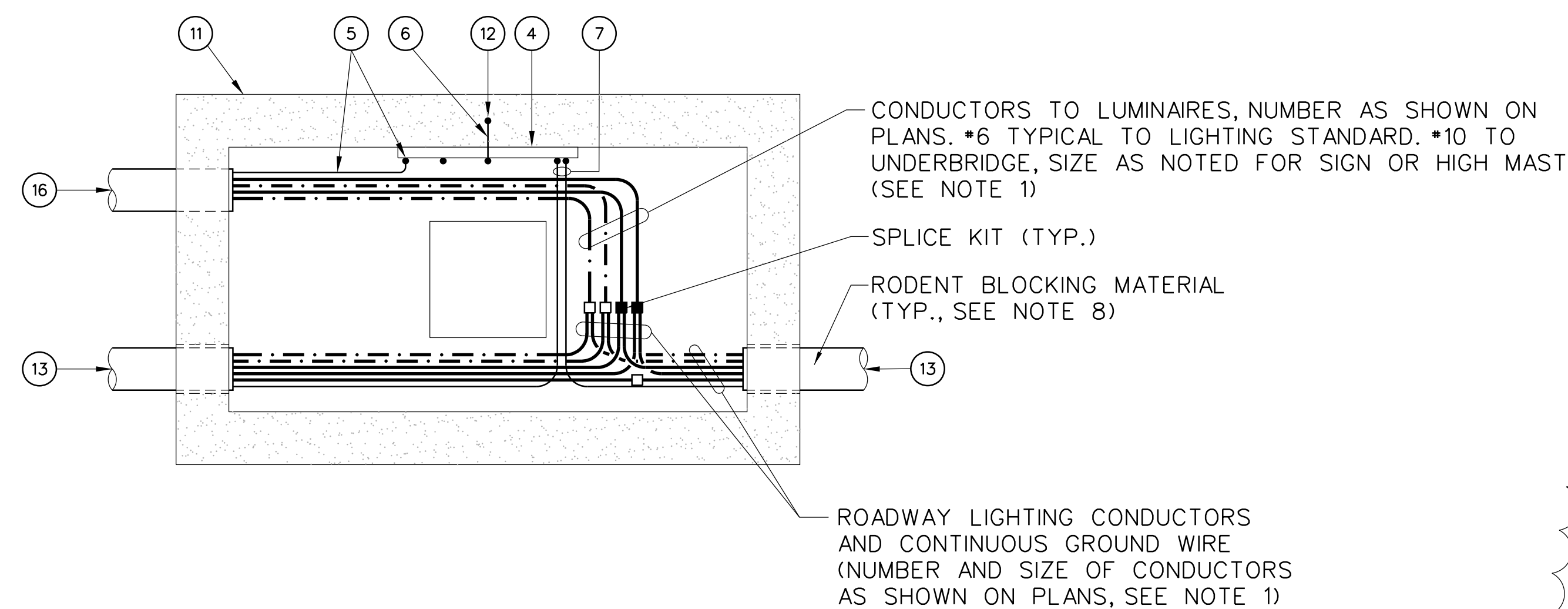
**TYPICAL WIRING IN TRANSFORMER BASES**

NOT TO SCALE



**FOR ONE LUMINAIRE**

(LIGHTING STANDARDS OR UNDERBRIDGE)

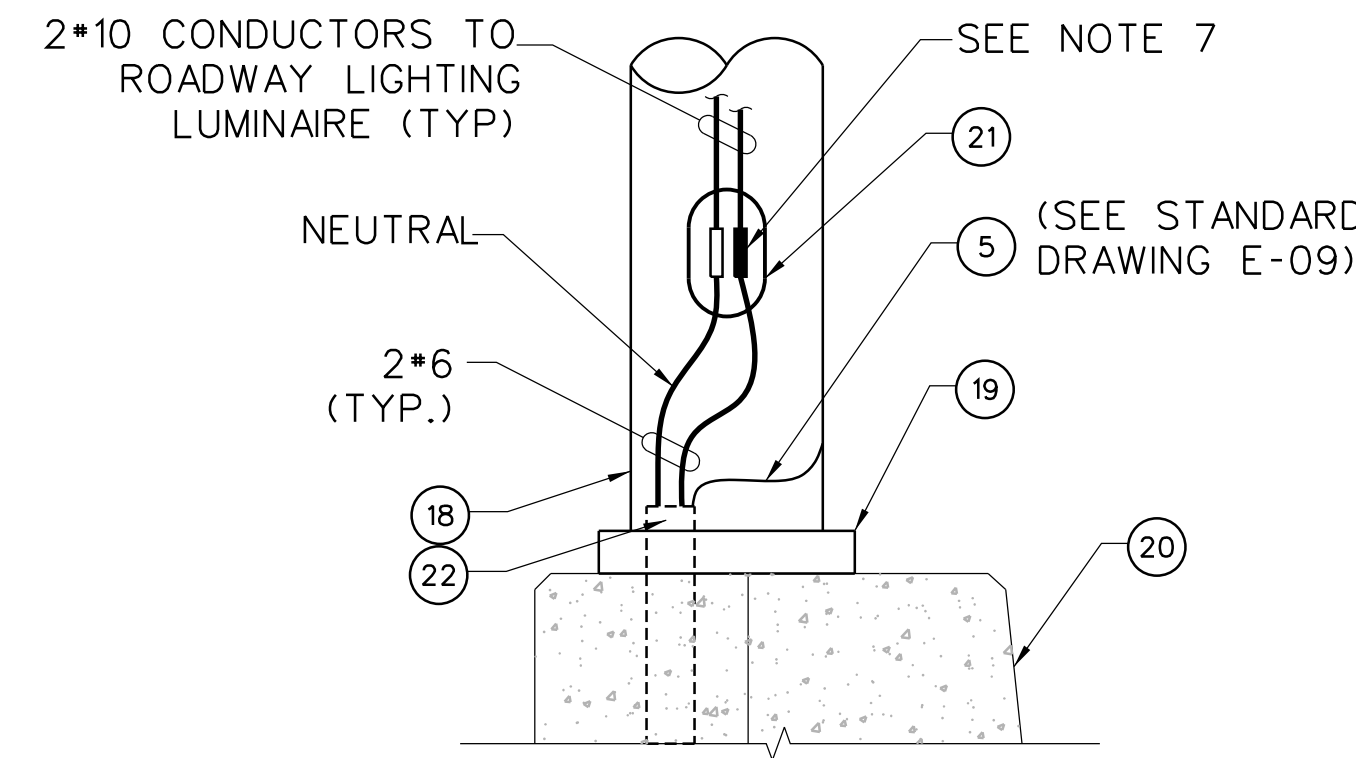


**FOR TWO OR MORE LUMINAIRES**

(LIGHTING STANDARDS, UNDERBRIDGE, SIGNS, OR HIGH MAST)

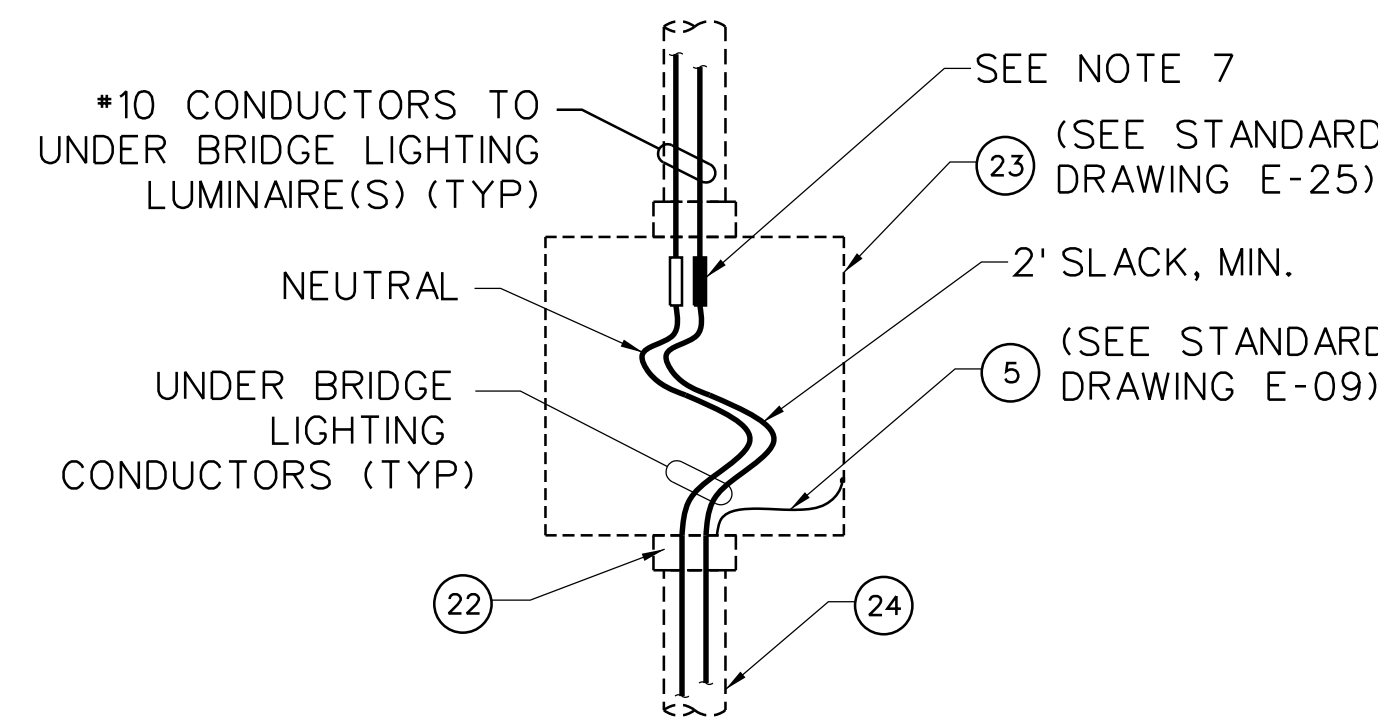
**TYPICAL WIRING IN JUNCTION BOXES AND JUNCTION BOX FOUNDATIONS**

NOT TO SCALE



**TYPICAL WIRING IN LIGHTING STANDARD WITHOUT TRANSFORMER BASE**

NOT TO SCALE



**TYPICAL WIRING IN UNDER BRIDGE LIGHTING PULL BOX**

NOT TO SCALE

**WIRE CONNECTOR NOTES:**

- ABBREVIATIONS: (F) - FUSED (NF) - NON-FUSED
- ALL FUSED AND NON-FUSED IN-LINE CONNECTOR KITS SHALL BE "BREAKAWAY" TYPE.
- ALL FUSES SHALL BE 6A, UNLESS OTHERWISE NOTED.
- CRIMP TYPE CONNECTOR KITS SHALL BE USED ONLY FOR LARGE SIZE CABLES WHERE SCREWTERMINAL TYPE CONNECTOR KITS ARE NOT AVAILABLE.

**SCHEDULE OF CABLE CONNECTORS**

(SEE SPECIFICATIONS FOR CONNECTOR KIT)

- IN-LINE CONNECTOR KIT (F)
- IN-LINE CONNECTOR KIT (NF)

**SCHEDULE OF WIRE SPLICE KITS**

(SEE SPECIFICATIONS FOR RESIN ENCAPSULATED SPLICE KIT)

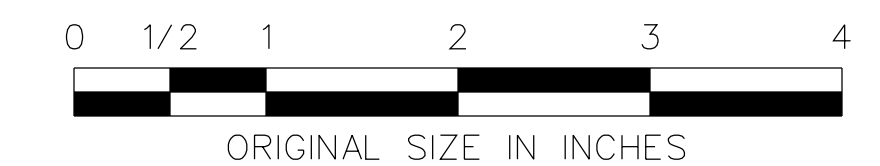
- WYE KIT (PHASE CONDUCTORS)
- WYE KIT (NEUTRAL CONDUCTORS)

**LEGEND:**

- NEUTRAL WIRE DESIGNATION (TYP.)
- LIGHTING STANDARD TRANSFORMER BASE
- GROUNDING (SEE STANDARD DWG. E-09)
- 12"x 1"x 3/8" GROUNDING BUS BAR
- NO.8 GROUND WIRE
- NO.10 GROUND WIRE
- COPPER GROUND WIRE (SIZE AS NOTED ON THE PLANS)
- LIGHTING STANDARD BASE, TYPE LP
- JUNCTION BOX/JUNCTION BOX FOUNDATION
- JUNCTION BOX FRAME GROUNDING
- 3" NONMETALLIC CONDUIT
- 3" NONMETALLIC CONDUIT TO LIGHTING STANDARD
- 3" NONMETALLIC CONDUIT TO MISCELLANEOUS FACILITIES
- STAINLESS STEEL LIGHTING STANDARD
- BASE PLATE
- PARAPET
- FLUSH HANDHOLE
- RODENT BLOCKING MATERIAL (SEE NOTE 8)
- 8"x8"x6" NEMA 4X S.S. PULL BOX
- PVC-COATED RMC (SIZE AS NOTED ON THE PLANS)

**NOTES**

- NUMBER AND SIZE OF CONDUCTORS ARE SHOWN ON PLANS. NOT ALL NEUTRAL CONDUCTORS AND SPLICE KITS SHOWN FOR CLARITY. ALL BRANCH CIRCUIT PHASE CONDUCTORS SHALL HAVE A DEDICATED NEUTRAL CONDUCTOR. ALL CONDUCTORS SHALL BE COLOR-CODED. SEE STANDARD AND SUPPLEMENTAL SPECIFICATIONS FOR APPROVED METHODS. USE OF HEAT SHRINK IS NOT APPROVED FOR PASS-THROUGH CONDUCTORS.
- ALL LIGHT POLES, JUNCTION BOXES, JUNCTION BOX FOUNDATIONS, CABINETS, AND DISCONNECTS SHALL BE CONNECTED TO THE EQUIPMENT GROUND CONDUCTOR (EGC).
- CONDUITS SHOWN REFER TO TYPICAL INSTALLATIONS. OTHER TYPES AND SIZES SHALL BE AS NOTED ON THE PLANS.
- WIRING IN ROADWAY LIGHTING MANHOLES SHALL BE SIMILAR TO TYPICAL WIRING SHOWN FOR JUNCTION BOXES.
- WIRING FOR LIGHTING STANDARDS INSTALLED ON JUNCTION BOX FOUNDATIONS AND BRIDGE PARAPETS SHALL BE IN ACCORDANCE WITH APPLICABLE DETAILS SHOWN ON THIS DRAWING.
- WIRING AS SHOWN IS DIAGRAMMATIC. SUFFICIENT SLACK OF CONDUCTORS SHALL BE PROVIDED BY LOOPING THE CONDUCTORS IN EACH TRANSFORMER BASE, JUNCTION BOX AND MANHOLE.
- FUSE SHALL BE ACCESSIBLE FROM THE HANDHOLE OR TRANSFORMER BASE. CONDUCTORS SHALL HAVE A MINIMUM OF THREE (3) FEET OF SLACK FOR MAINTENANCE PURPOSE.
- ALL OPEN CONDUIT TERMINATIONS SHALL HAVE RODENT BLOCKING MATERIAL. SEE STANDARD DRAWING E-16.
- ALL SPLICE CONNECTIONS IN UNDERGROUND JUNCTION BOXES, MANHOLES, AND JUNCTION BOX FOUNDATIONS SHALL BE RESIN ENCAPSULATED SPLICE KITS. SEE SPECIFICATIONS AND QUALIFIED PRODUCTS LIST FOR DETAILS.
- ALL MULTIPLE LIGHTING AND POWER CABLES SHALL COMPLY WITH THE SPECIFICATIONS AND QUALIFIED PRODUCTS LIST. NO EXCEPTIONS.



NEW JERSEY TURNPIKE AUTHORITY  
**NEW JERSEY TURNPIKE  
GARDEN STATE PARKWAY**

STANDARD DRAWINGS

**ROADWAY LIGHTING  
INSTALLATION DETAILS - 3**

OFFICE OF THE CHIEF ENGINEER  
NEW JERSEY TURNPIKE AUTHORITY  
WOODBURGE, NEW JERSEY

STANDARD DRAWING

**E-20**

REV.	DESCRIPTION	DATE
1	REVISED TYPICAL WIRING DETAILS	01/24
0	REISSUED DRAWING	09/21