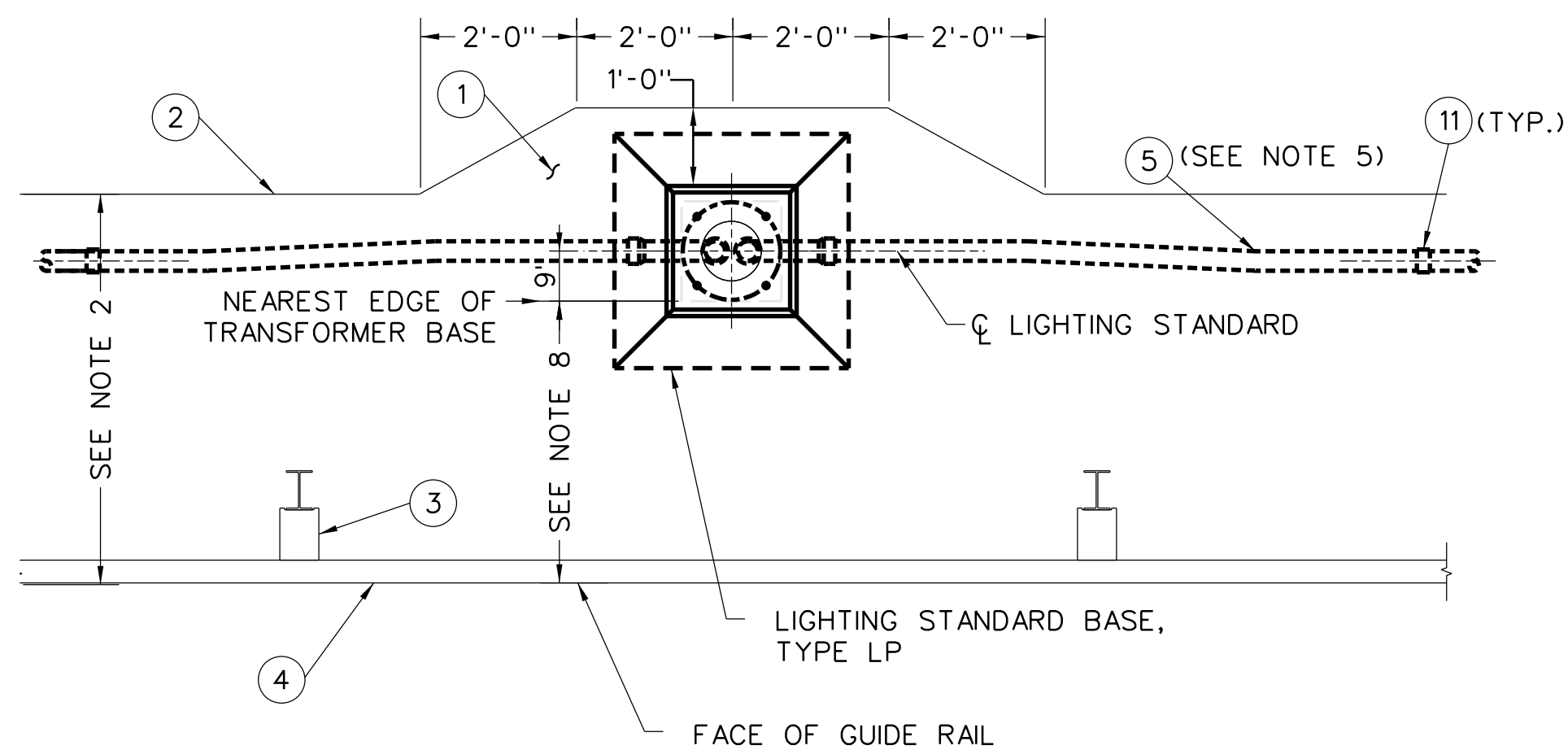


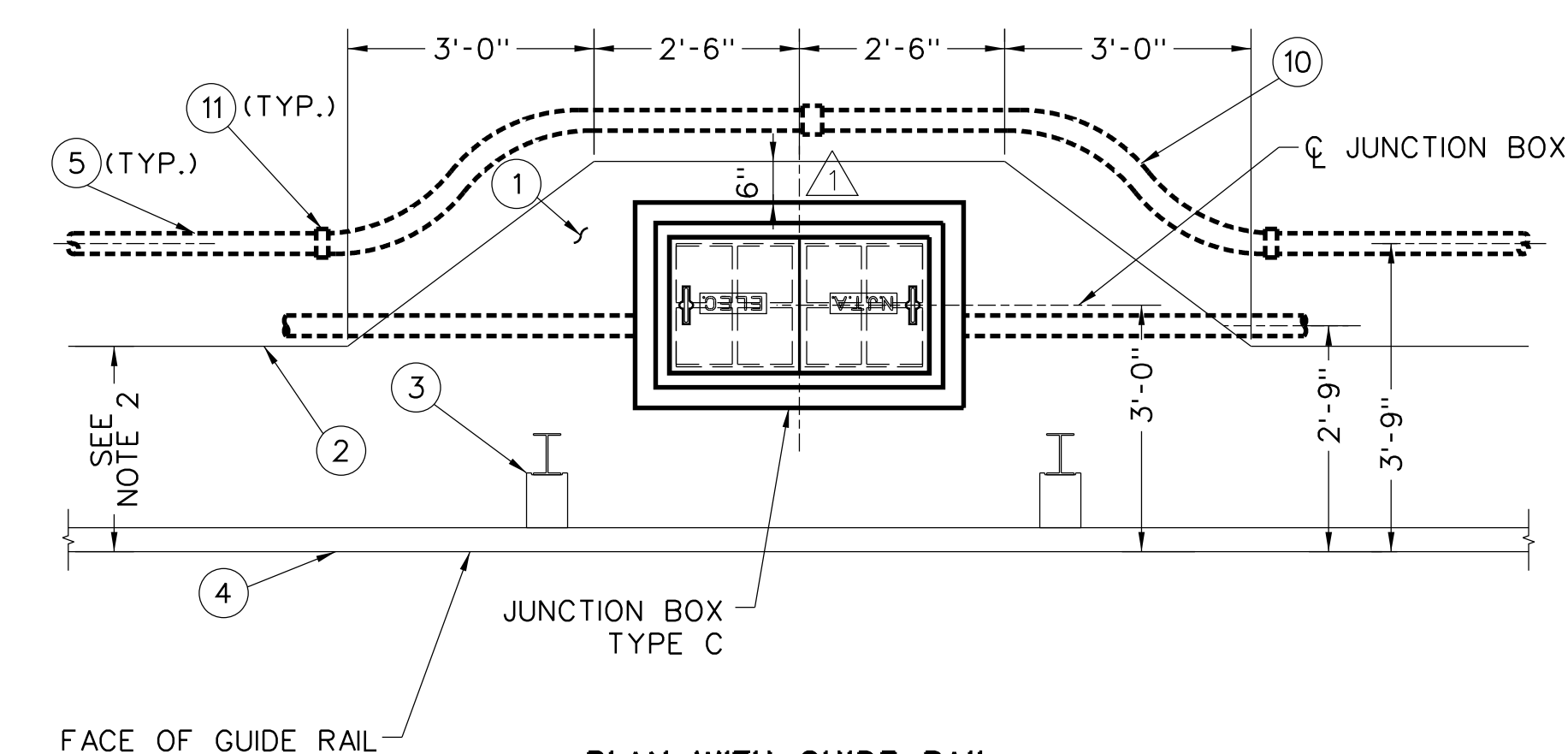
**PLAN WITHOUT GUIDE RAIL
(THROUGH CONDUIT INSTALLATION)**



**PLAN WITH GUIDE RAIL
(THROUGH CONDUIT INSTALLATION)**

**TYPICAL PASS THROUGH CONDUIT
INSTALLATION DETAILS**

SCALE: 1/2" = 1'-0"



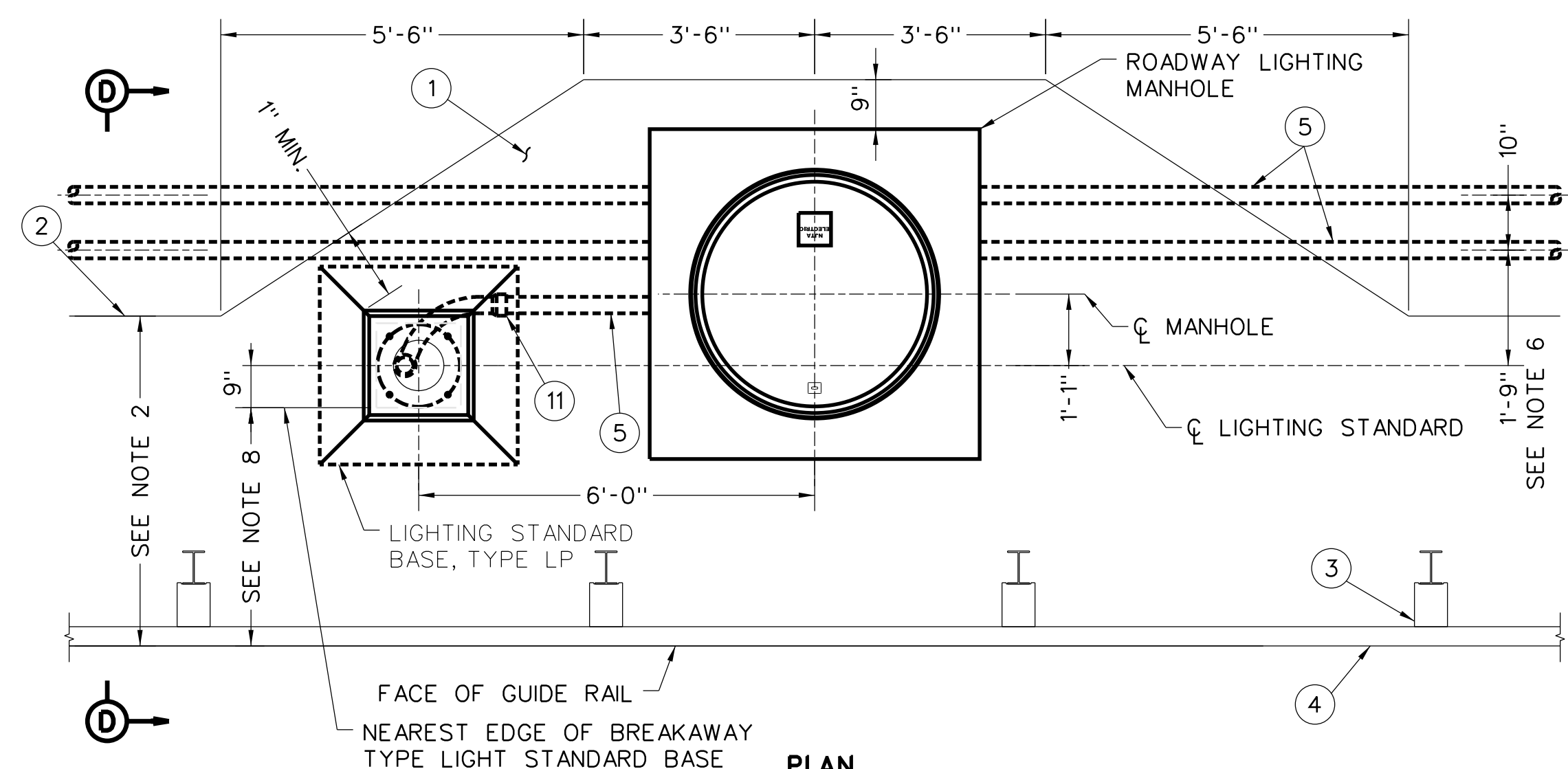
**PLAN WITH GUIDE RAIL
(JUNCTION BOX AND THROUGH CONDUIT INSTALLATION)**

NOTES

- TYPICAL INSTALLATIONS SHOWN ON THIS DRAWING REFER TO AREAS WITH GUIDE RAIL AND BERM SURFACING. INSTALLATIONS IN OTHER AREAS SHALL BE SIMILAR, UNLESS OTHERWISE NOTED ON THE CONTRACT PLANS AND/OR DIRECTED BY THE ENGINEER.
- UNLESS OTHERWISE NOTED ON THE CONTRACT PLANS, ADDITIONAL BERM SURFACING SHALL BE PLACED AS SHOWN AROUND LIGHTING STANDARD BASES, JUNCTION BOXES, AND MANHOLES WHERE GUIDE RAIL IS PRESENT. MODIFIED GRADING AND EROSION CONTROL MEASURES AROUND LIGHTING INSTALLATIONS PLACED ON SLOPES GREATER THAN 4H:1V MAY BE NECESSARY TO ENSURE BELOW GRADE FEATURES ARE NOT EXPOSED.
- WHERE GUIDE RAIL IS PRESENT, ALL SETBACK DIMENSIONS SHALL REFERENCE FROM FACE OF GUIDE RAIL. WHERE CURB IS PRESENT, ALL SETBACK DIMENSIONS SHALL REFERENCE FROM FACE OF CURB. IN THE ABSENCE OF CURB OR GUIDE RAIL, ALL SETBACK DIMENSIONS SHALL REFERENCE FROM EDGE OF PAVEMENT.
- MANHOLE CENTERLINE SETBACK FROM CENTERLINE OF LIGHTING STANDARD SHOWN FOR ONE (1) TO FOUR (4) CONDUITS. WHERE MORE CONDUITS ARE REQUIRED, THE MANHOLE SETBACK SHALL INCREASE IN 6" INCREMENTS AS REQUIRED TO ACCOMMODATE THE NUMBER OF CONDUITS.
- CONDUIT OFFSET BEND SHALL BE RIGID NONMETALLIC WHERE THE DISTANCE BETWEEN GUIDE RAIL POST AND LIGHTING STANDARD BASE IS LESS THAN 5'-0".
- CONDUIT SETBACK FROM CENTERLINE OF LIGHTING STANDARD SHOWN FOR ONE (1) TO FOUR (4) CONDUITS. WHERE MORE CONDUITS ARE REQUIRED, THE CONDUIT SETBACK NEAREST THE ROADWAY SHALL REMAIN CONSTANT. ADDITIONAL CONDUITS SHALL BE INSTALLED AWAY FROM THE ROADWAY, SPACED AS SHOWN.
- PLACEMENT OF CONCRETE JUNCTION BOXES AND ROADWAY LIGHTING MANHOLES WHICH ARE NOT ADJACENT TO A LIGHTING STANDARD SHALL CONFORM TO THE APPLICABLE DETAILS SHOWN.
- REFER TO THE GR STANDARD DRAWINGS FOR SETBACK REQUIREMENTS TO NEAREST EDGE OF BREAKAWAY TYPE TRANSFORMER BASE IN RELATION TO GUIDE RAIL. LIGHTING STANDARD BASES SHALL BE PLACED AT MIDPOINT BETWEEN GUIDE RAIL POSTS, WHEREVER FEASIBLE.
- ASPHALT LIP CURBS ARE NOT SHOWN.
- ALL OPEN CONDUIT TERMINATIONS SHALL HAVE RODENT BLOCKING MATERIAL. SEE STANDARD DRAWING E-16.
- UNLESS OTHERWISE NOTED ON THE CONTRACT PLANS, BERM SURFACING IS NOT REQUIRED BEHIND THE EDGE OF PAVEMENT OR CURB IF GUIDE RAIL IS NOT PRESENT.
- UNLESS OTHERWISE NOTED ON THE PLANS, ALL JUNCTION BOX TYPE C, JUNCTION BOX FOUNDATIONS, AND MANHOLES SHALL BE INSTALLED FLUSH WITH FINAL GRADE WITH A MAXIMUM ALLOWANCE OF 2 INCHES ABOVE ADJACENT GROUND.

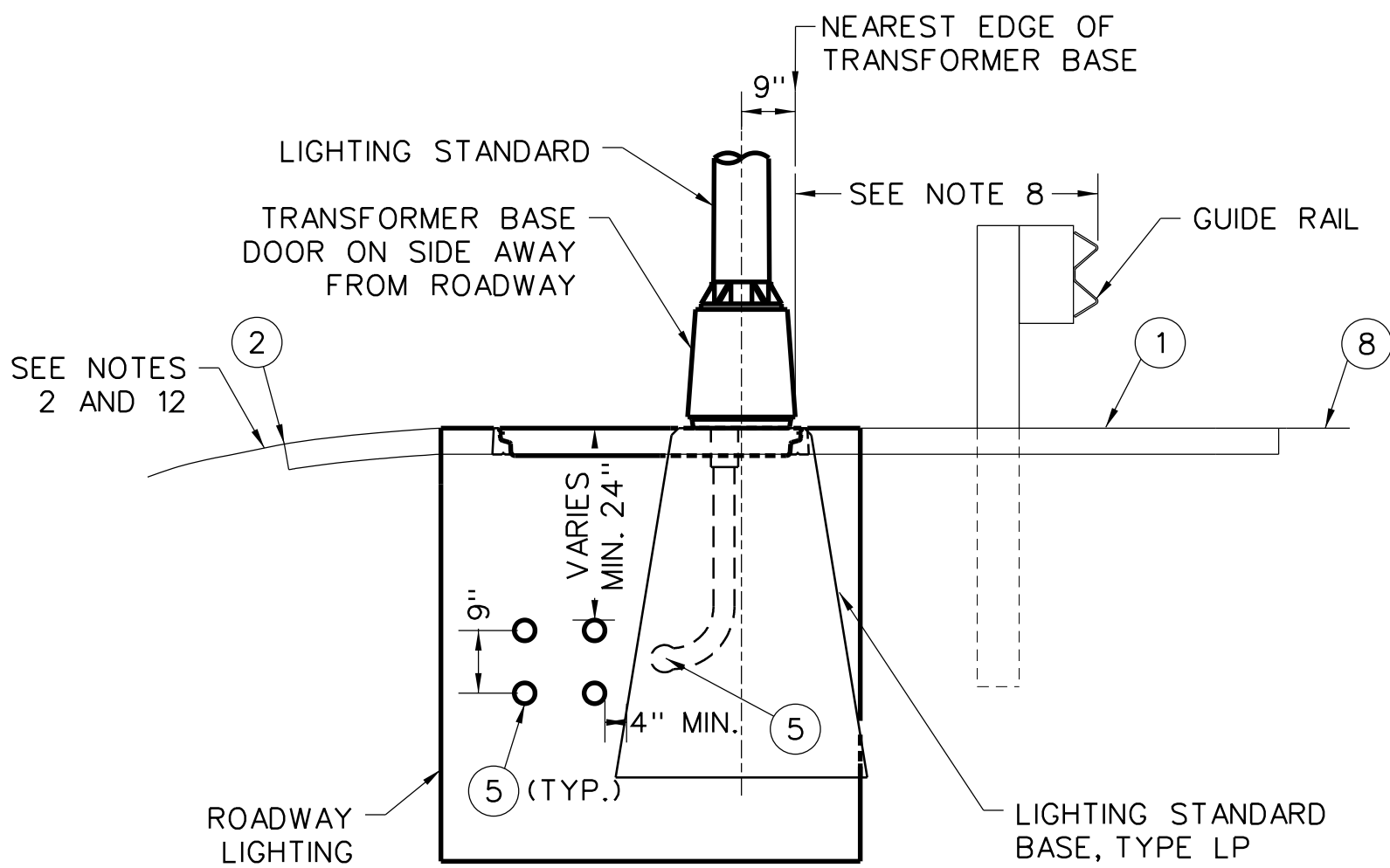
LEGEND

- BERM SURFACING (SEE NOTES 1 & 2)
- EDGE OF BERM SURFACING (SEE NOTE 2)
- GUIDE RAIL POST AND BRACKET(S)
- GUIDE RAIL ELEMENT(S)
- 3" RIGID NONMETALLIC CONDUIT(S) (TYP.), SIZE AND TYPE AS SHOWN ON THE PLANS
- 3" RIGID NONMETALLIC CONDUIT BEND WITH 12" MIN. RADIUS
- TOP OF PAVEMENT ON ROADWAYS WITHOUT CURB
- TOP OF PAVEMENT ON ROADWAYS WITH CURB
- CONDUIT OFFSET BEND WITH 36" RAD, 20" 1/4" OFFSET AND 6'-6" MIN LENGTH. 3" SIZE (TYP) OR 2" SIZE (WHERE REQ'D), NONMETALLIC OR RIGID METALLIC, AS SHOWN ON THE PLANS
- CONDUIT COUPLING

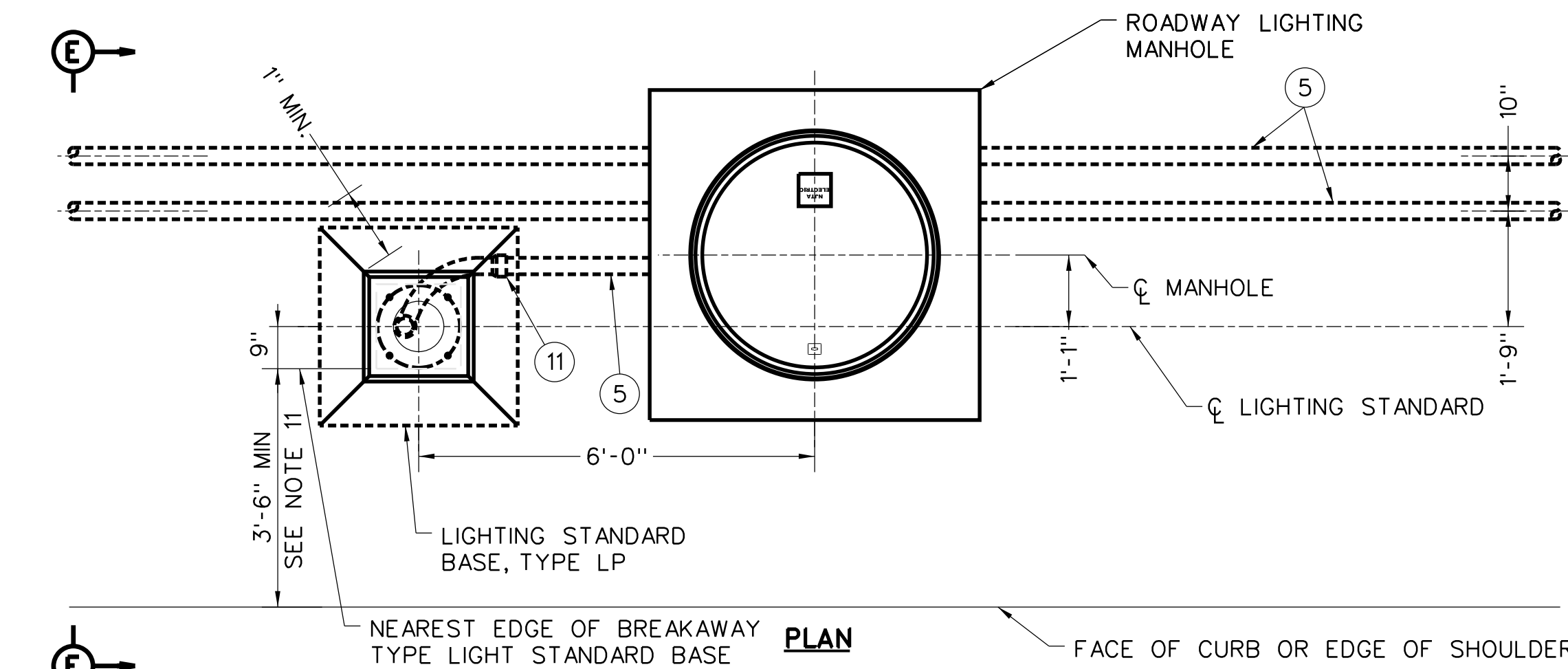


PLAN

LIGHTING STANDARD INSTALLATION ADJACENT TO MANHOLE (WITH GUIDE RAIL)



SECTION D-D

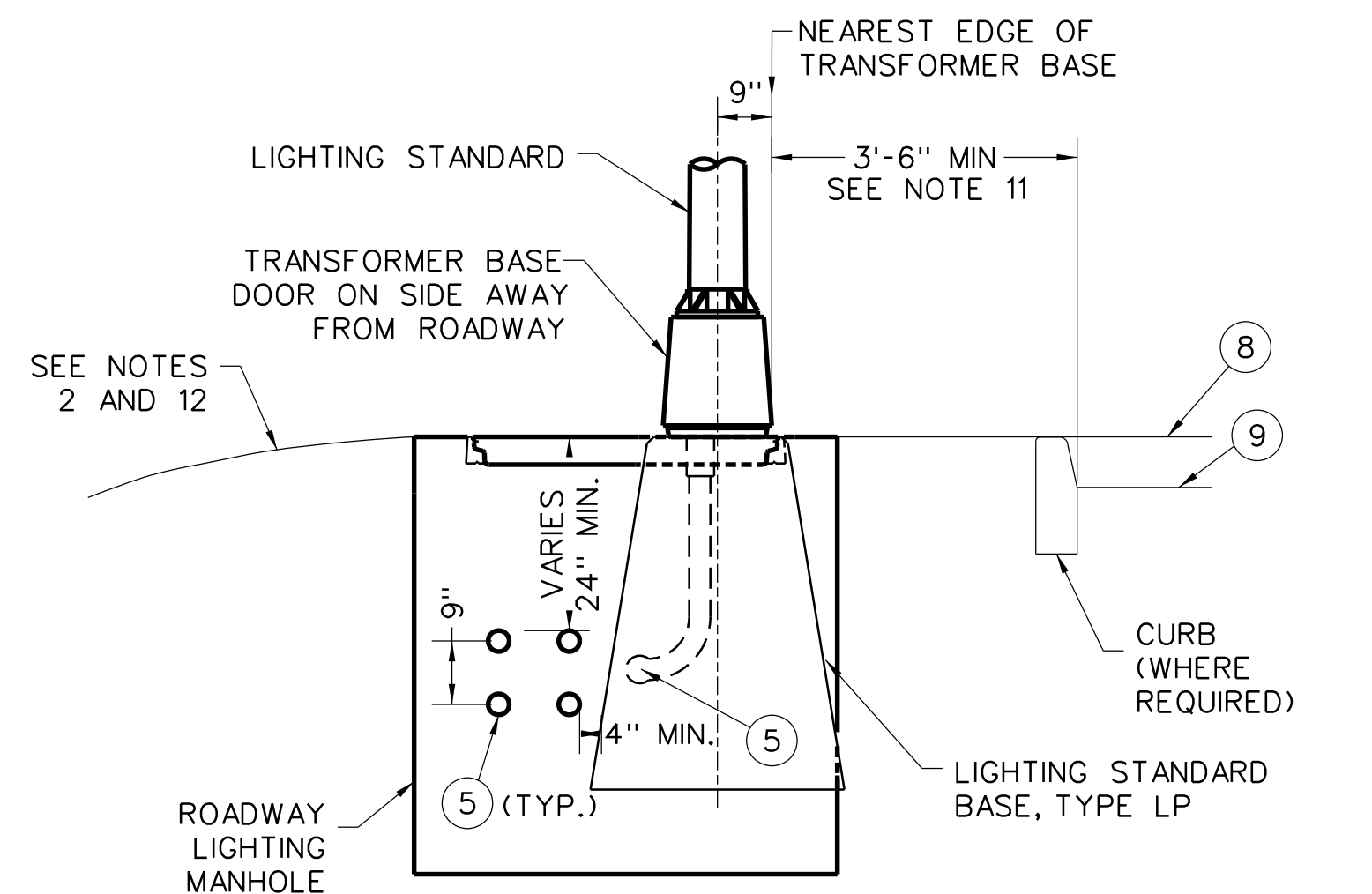


PLAN

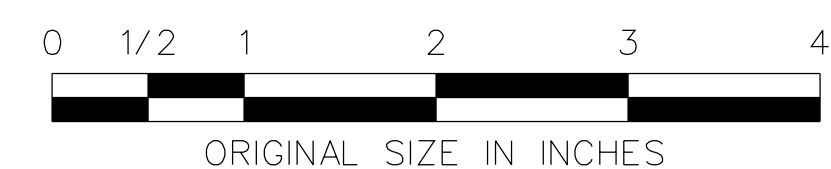
LIGHTING STANDARD INSTALLATION ADJACENT TO MANHOLE (WITHOUT GUIDE RAIL)

**TYPICAL LIGHTING STANDARD AND MANHOLE
INSTALLATION DETAILS**

SCALE: 1/2" = 1'-0"



SECTION E-E



REV.	DESCRIPTION	DATE
0	REISSUED DRAWING	01/24

NEW JERSEY TURNPIKE AUTHORITY
**NEW JERSEY TURNPIKE
 GARDEN STATE PARKWAY**
 STANDARD DRAWINGS

**ROADWAY LIGHTING
 INSTALLATION DETAILS - 2**

OFFICE OF THE CHIEF ENGINEER
 NEW JERSEY TURNPIKE AUTHORITY
 WOODBRIDGE, NEW JERSEY

STANDARD DRAWING
E-19