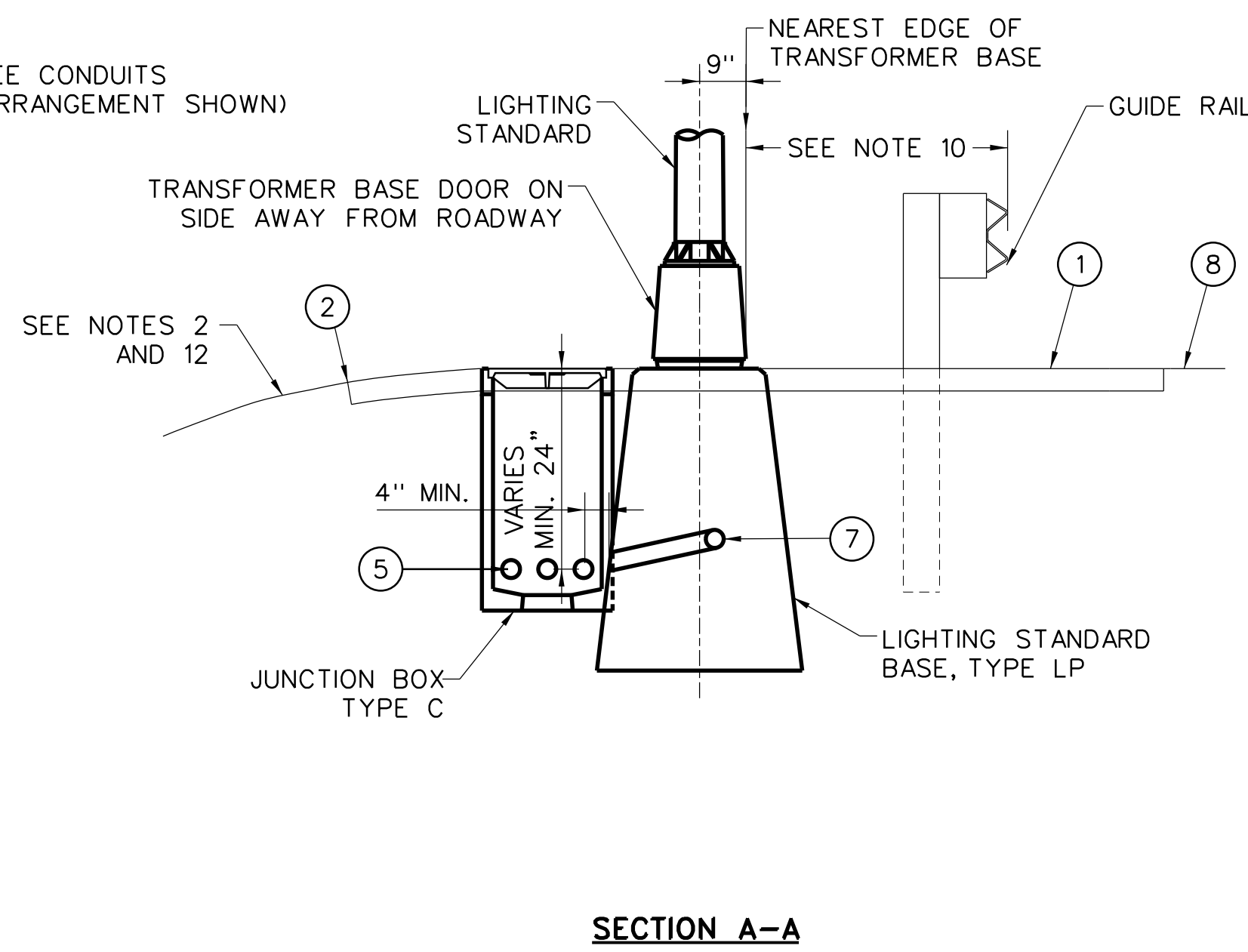
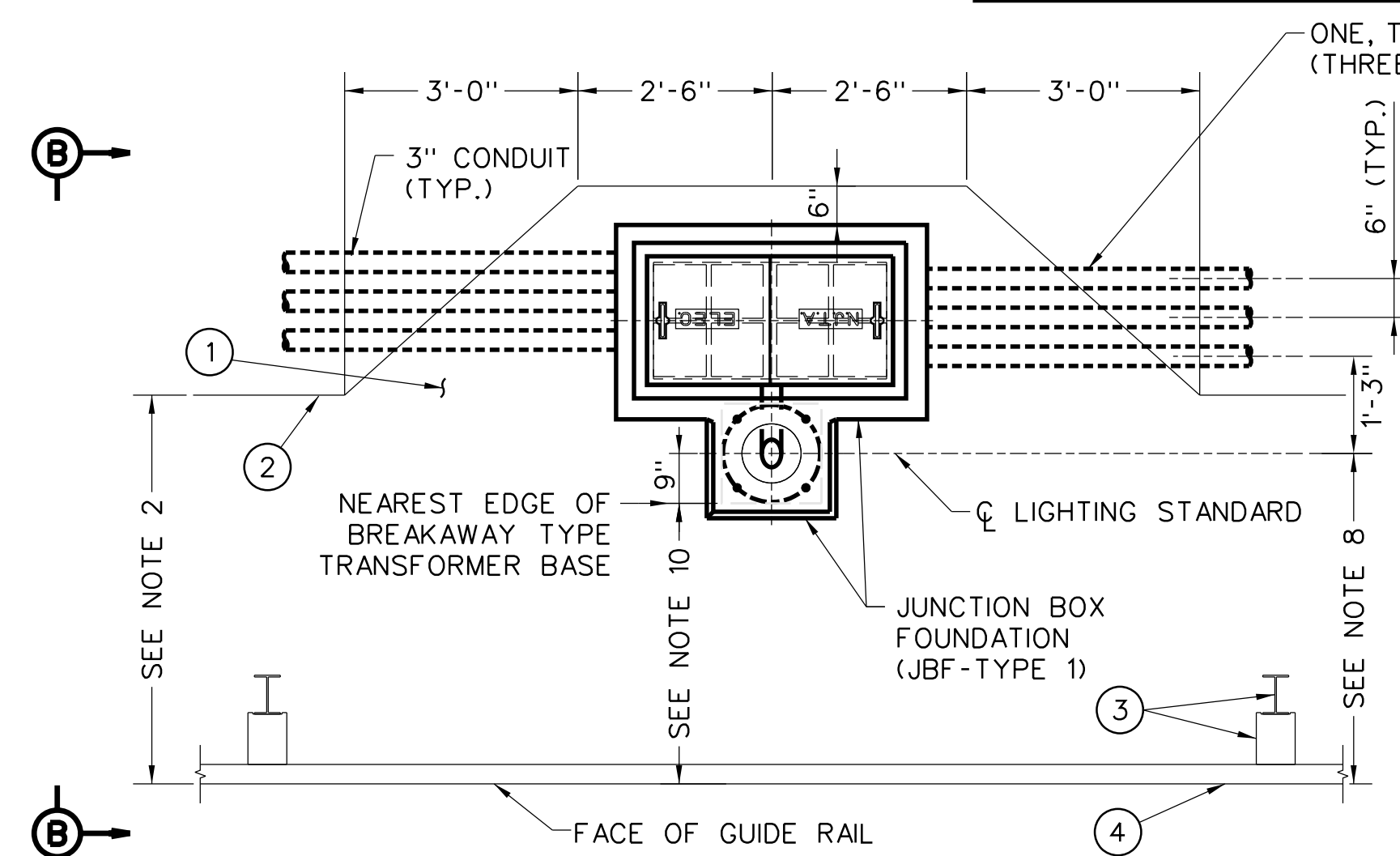


PLAN

**INSTALLATION FOR ONE, TWO, OR THREE CONDUIT RACEWAYS (WITH GUIDE RAIL)**

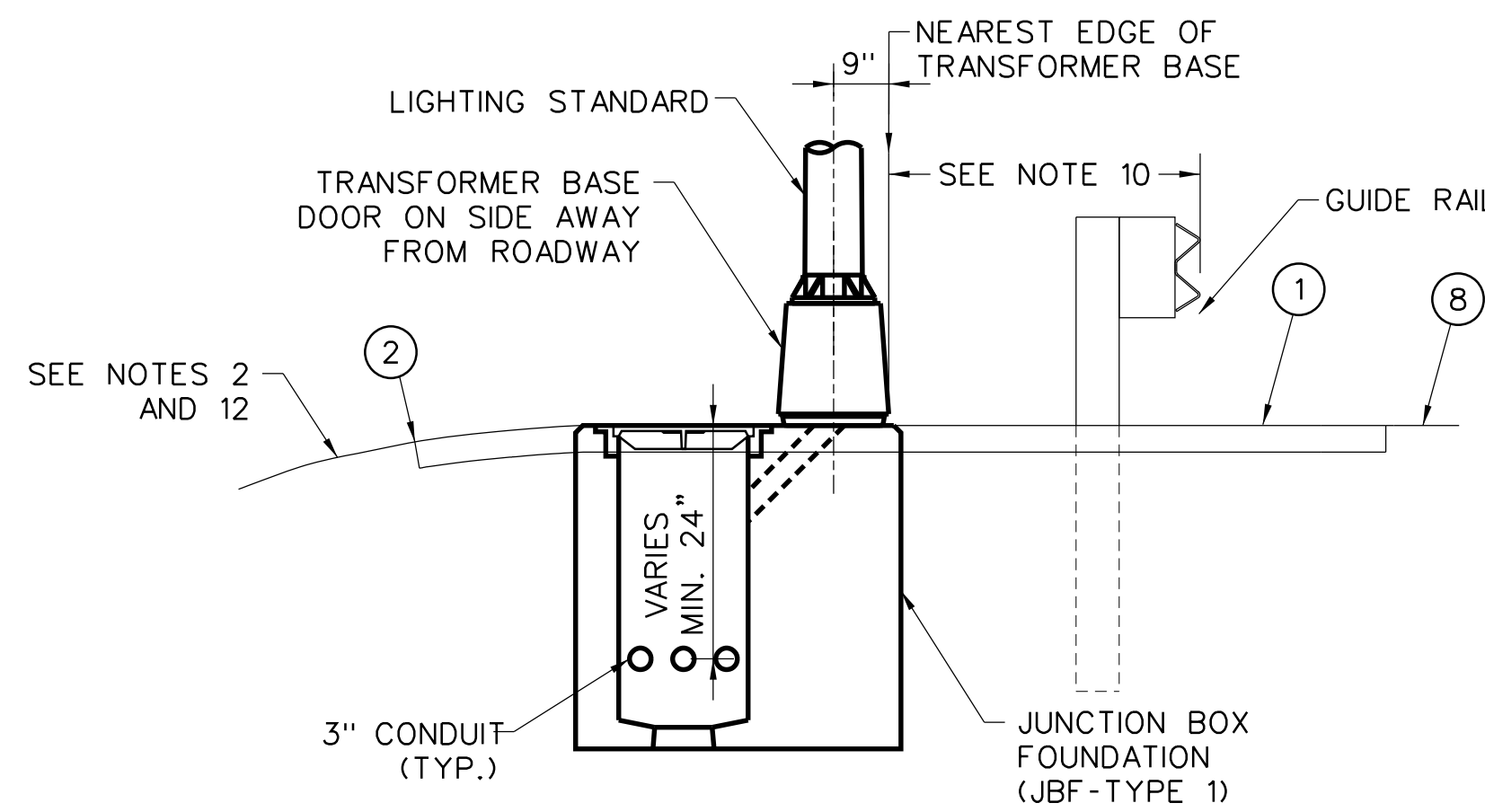


SECTION A-A

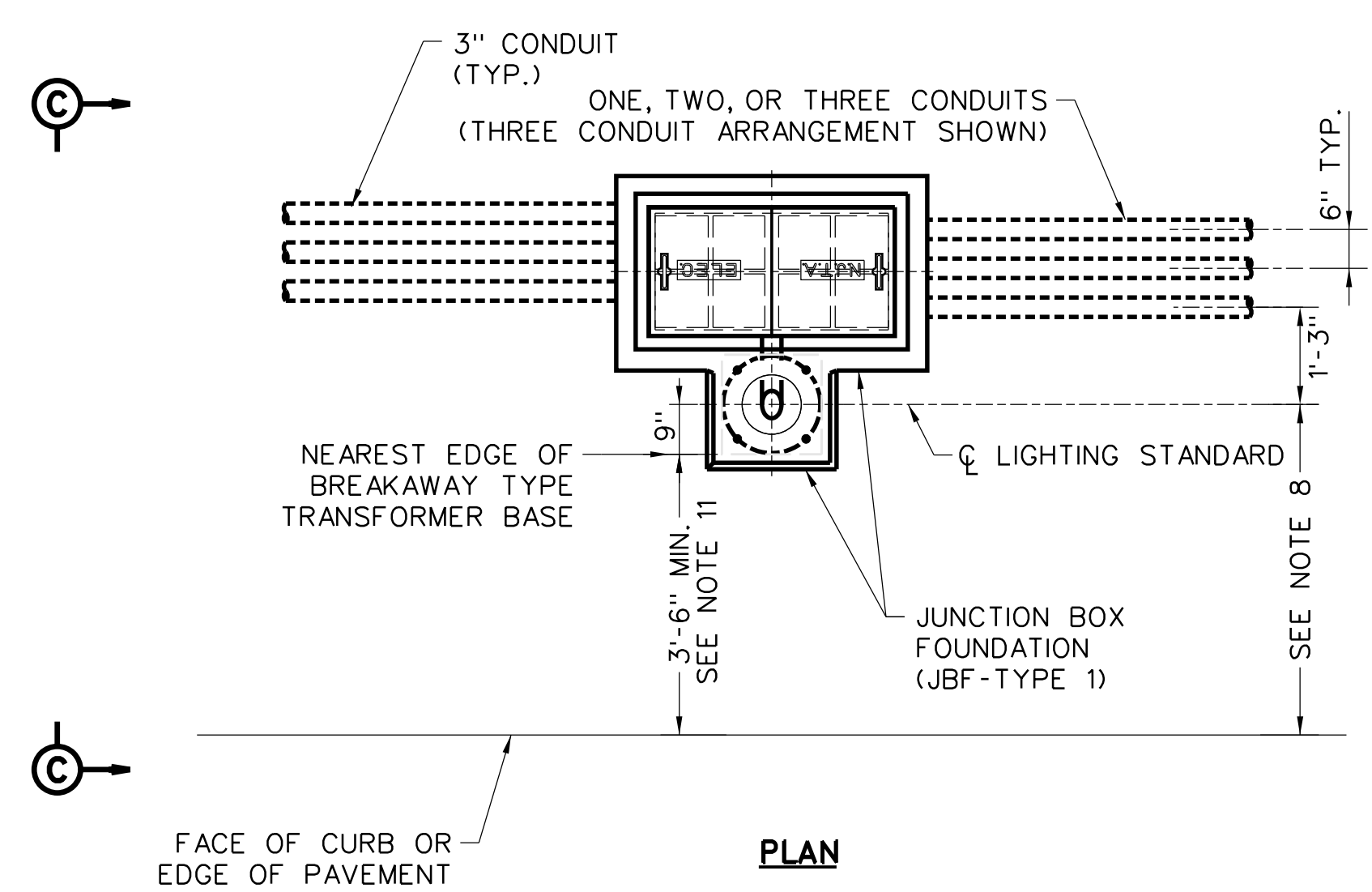


PLAN

**INSTALLATION OF J.B.F. WITH ONE, TWO OR THREE CONDUIT RACEWAY(S) (WITH GUIDERAIL)**

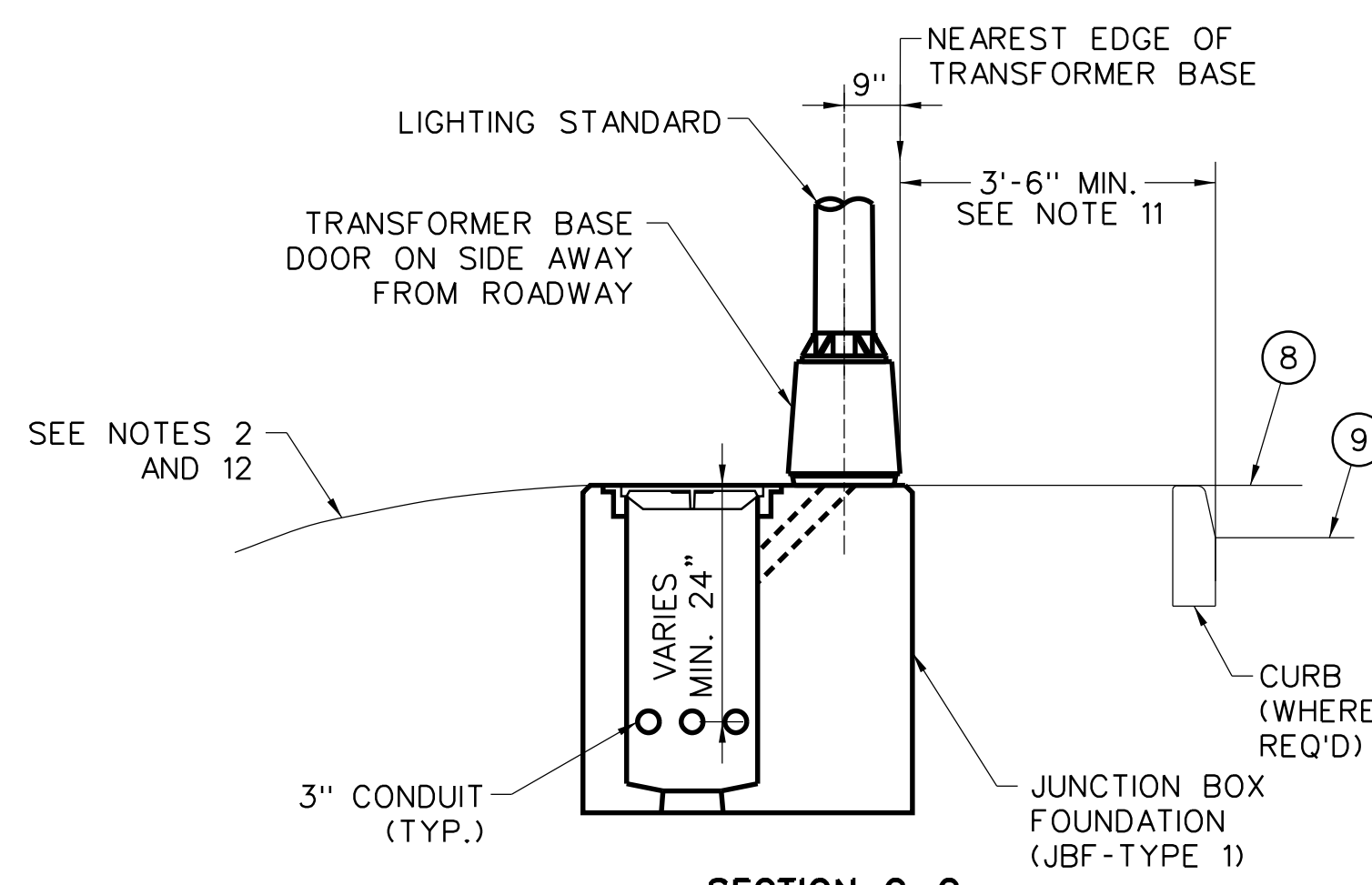


SECTION B-B



PLAN

**INSTALLATION OF J.B.F. WITH ONE, TWO OR THREE CONDUIT RACEWAY(S) (NO GUIDE RAIL)**



SECTION C-C

**TYPICAL LIGHTING STANDARD AND CONCRETE JUNCTION BOX INSTALLATION DETAILS**

Scale: 1/2" = 1'-0"

**NOTES**

1. TYPICAL INSTALLATIONS SHOWN ON THIS DRAWING REFER TO AREAS WITH GUIDE RAIL AND BERM SURFACING. INSTALLATIONS IN OTHER AREAS SHALL BE SIMILAR, UNLESS OTHERWISE NOTED ON THE CONTRACT PLANS AND/OR DIRECTED BY THE ENGINEER.
2. UNLESS OTHERWISE NOTED ON THE CONTRACT PLANS, ADDITIONAL BERM SURFACING SHALL BE PLACED AS SHOWN AROUND LIGHTING STANDARD BASES, JUNCTION BOXES, AND MANHOLES WHERE GUIDE RAIL IS PRESENT. MODIFIED GRADING AND EROSION CONTROL MEASURES AROUND LIGHTING INSTALLATIONS PLACED ON SLOPES GREATER THAN 4H:1V MAY BE NECESSARY TO ENSURE BELOW GRADE FEATURES ARE NOT EXPOSED.
3. PLACEMENT OF CONCRETE JUNCTION BOXES AND ROADWAY LIGHTING MANHOLES WHICH ARE NOT ADJACENT TO A LIGHTING STANDARD SHALL CONFORM TO THE APPLICABLE DETAILS SHOWN ON STANDARD DRAWING E-19.
4. LIGHTING STANDARD BASES SHALL BE PLACED AT MIDPOINT BETWEEN GUIDE RAIL POSTS, WHEREVER FEASIBLE.
5. ASPHALT LIP CURBS ARE NOT SHOWN.
6. ALL OPEN CONDUIT TERMINATIONS SHALL HAVE RODENT BLOCKING MATERIAL. SEE STANDARD DRAWING E-16.
7. WHERE GUIDE RAIL IS PRESENT, ALL SETBACK DIMENSIONS SHALL REFERENCE FROM FACE OF GUIDE RAIL. WHERE CURB IS PRESENT, ALL SETBACK DIMENSIONS SHALL REFERENCE FROM FACE OF CURB. IN THE ABSENCE OF CURB OR GUIDE RAIL, ALL SETBACK DIMENSIONS SHALL REFERENCE FROM EDGE OF PAVEMENT.
8. MINIMUM SETBACK FROM CENTERLINE OF LIGHTING STANDARD SHOWN FOR ONE (1) TO THREE (3) CONDUITS. WHERE MORE CONDUITS ARE REQUIRED, THE CONDUIT SETBACK NEAREST THE ROADWAY SHALL REMAIN CONSTANT. ADDITIONAL CONDUITS SHALL BE INSTALLED AWAY FROM THE ROADWAY, SPACED AS SHOWN.
9. PLACEMENT OF CONCRETE JUNCTION BOXES AND ROADWAY LIGHTING MANHOLES WHICH ARE NOT ADJACENT TO A LIGHTING STANDARD SHALL CONFORM TO THE APPLICABLE DETAILS SHOWN.
10. REFER TO THE GR STANDARD DRAWINGS FOR SETBACK REQUIREMENTS TO NEAREST EDGE OF BREAKAWAY TYPE TRANSFORMER BASE IN RELATION TO GUIDE RAIL. LIGHTING STANDARD BASES SHALL BE PLACED AT MIDPOINT BETWEEN GUIDE RAIL POSTS, WHEREVER FEASIBLE.
11. UNLESS OTHERWISE NOTED ON THE CONTRACT PLANS, BERM SURFACING IS NOT REQUIRED BEHIND THE EDGE OF PAVEMENT OR CURB IF GUIDE RAIL IS NOT PRESENT.
12. UNLESS OTHERWISE NOTED ON THE PLANS, ALL JUNCTION BOX TYPE C, JUNCTION BOX FOUNDATIONS, AND MANHOLES SHALL BE INSTALLED FLUSH WITH FINAL GRADE WITH A MAXIMUM ALLOWANCE OF 2 INCHES ABOVE ADJACENT GROUND.

**LEGEND**

- ① BERM SURFACING (SEE NOTES 1 & 2)
- ② EDGE OF BERM SURFACING (SEE NOTE 2)
- ③ GUIDE RAIL POST AND BRACKET(S)
- ④ GUIDE RAIL ELEMENT(S)
- ⑤ 3" RIGID NONMETALLIC CONDUIT(S) (TYP.) SIZE AND TYPE AS SHOWN ON THE PLANS
- ⑦ 3" RIGID NONMETALLIC CONDUIT BEND WITH 12" MIN. RADIUS
- ⑧ TOP OF PAVEMENT ON ROADWAYS WITHOUT CURB
- ⑨ TOP OF PAVEMENT ON ROADWAYS WITH CURB

NEW JERSEY TURNPIKE AUTHORITY  
**NEW JERSEY TURNPIKE  
 GARDEN STATE PARKWAY**

STANDARD DRAWINGS

**ROADWAY LIGHTING  
 INSTALLATION DETAILS - 1**

OFFICE OF THE CHIEF ENGINEER  
 NEW JERSEY TURNPIKE AUTHORITY  
 WOODBRIDGE, NEW JERSEY

STANDARD DRAWING

0	REISSUED DRAWING	01/24
REV.	DESCRIPTION	DATE

E-18