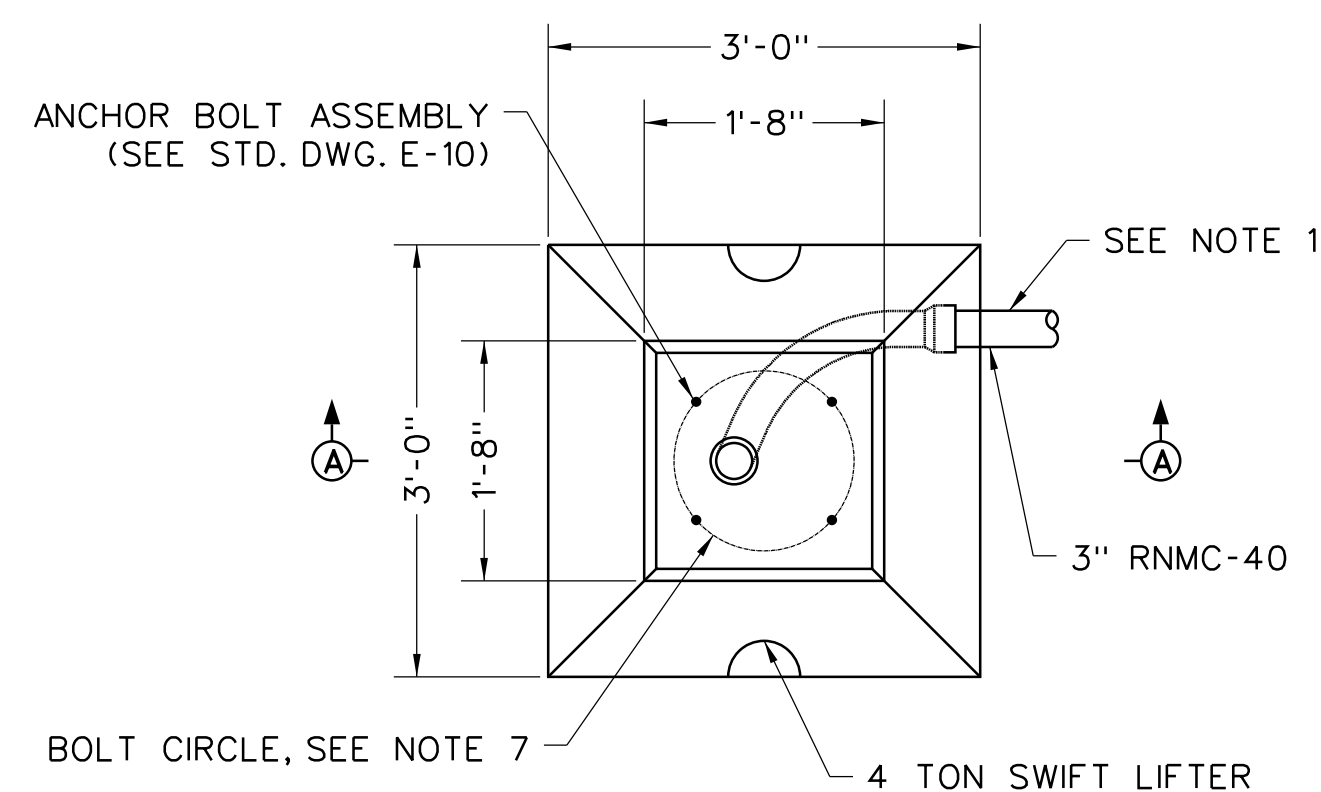
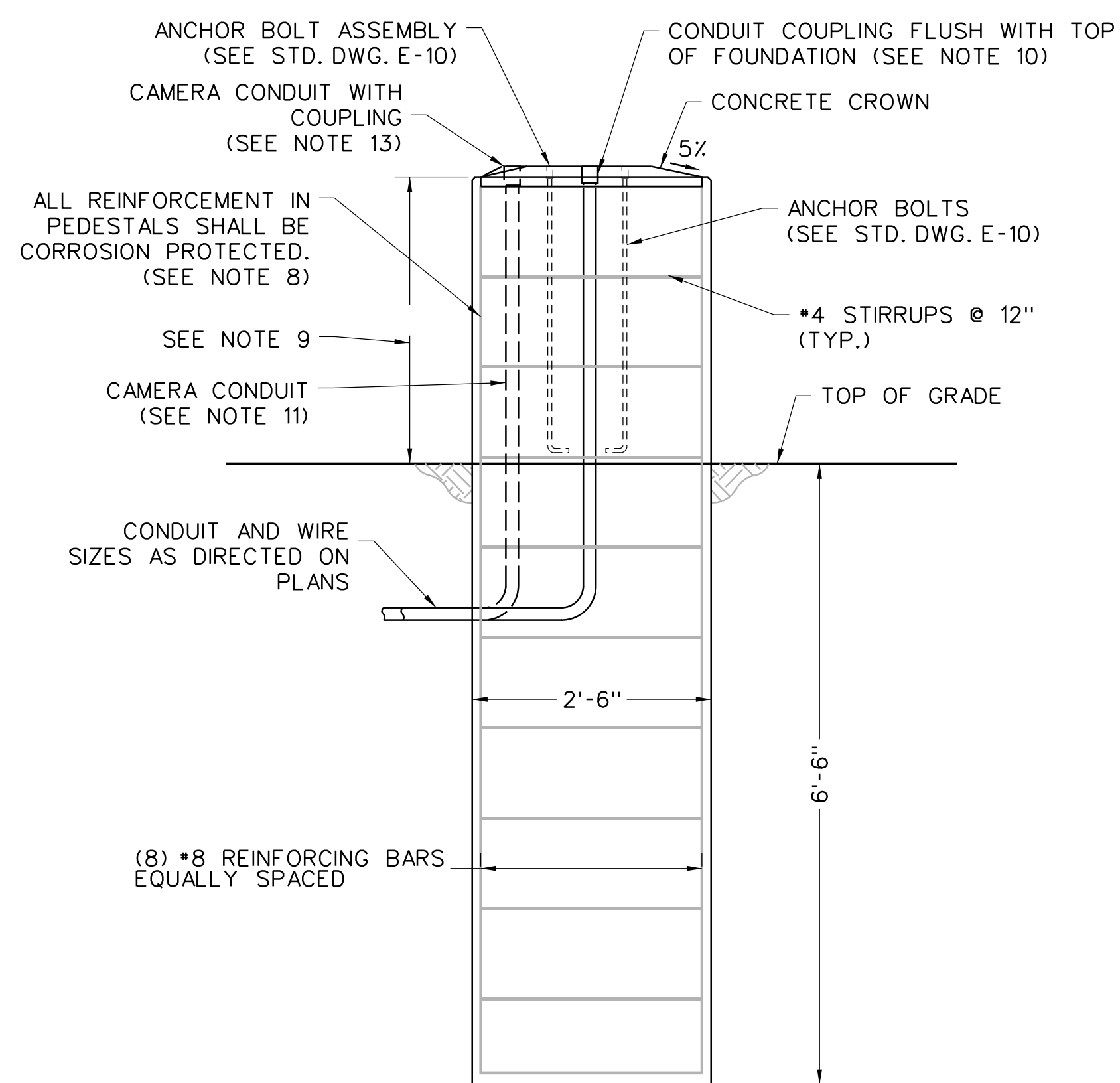


PLAN



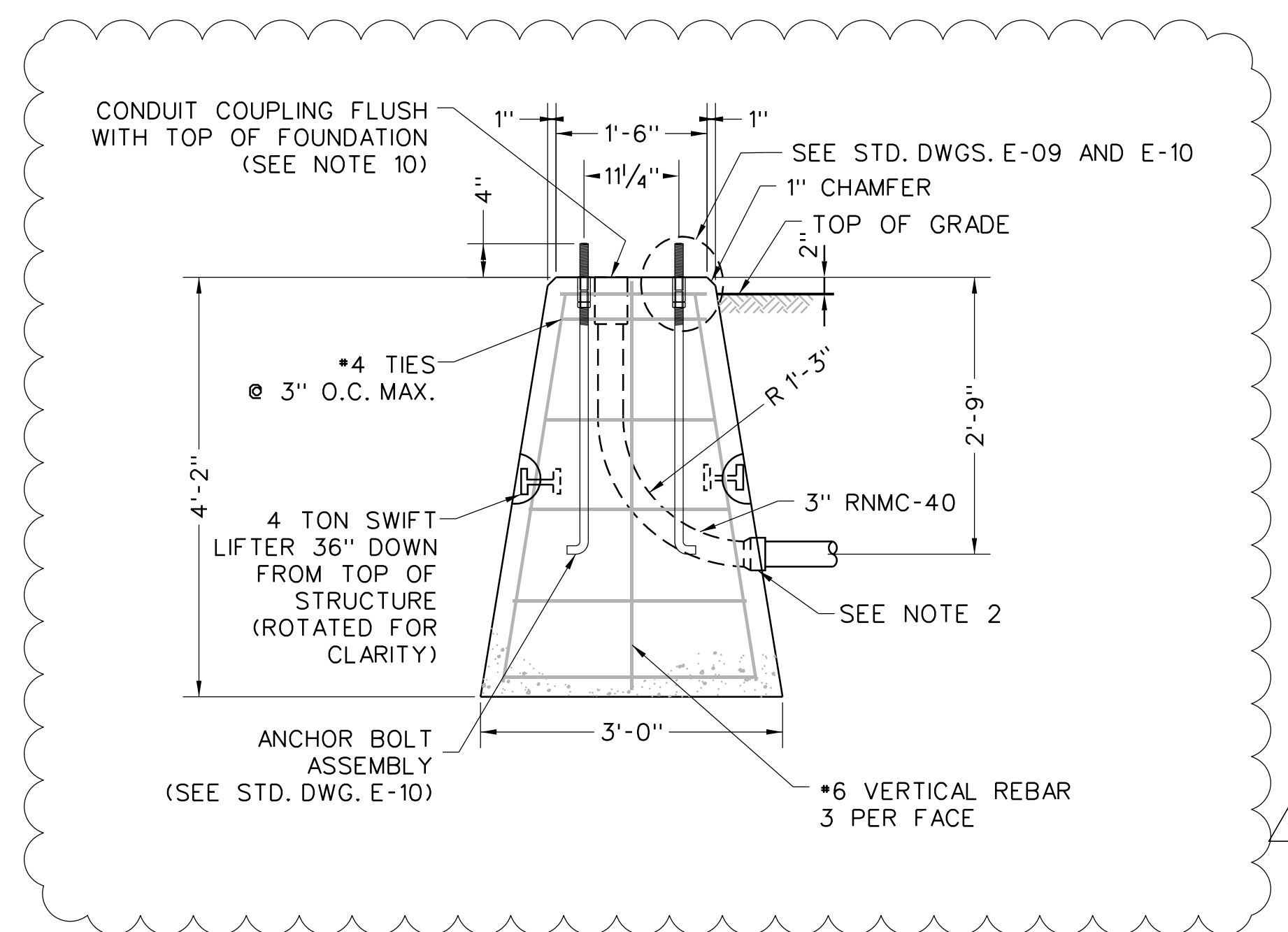
PLAN



ELEVATION

CONCRETE BASE, TYPE M

SCALE: 3/4" = 1'-0"



SECTION A-A

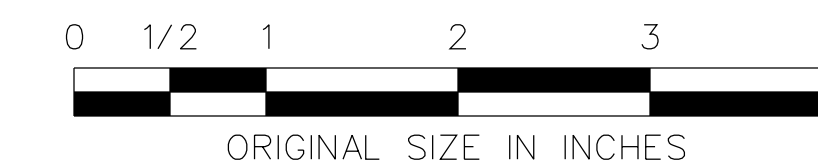
CONCRETE BASE, TYPE LP

SCALE: 3/4" = 1'-0"

NOTES

1. NUMBER OF CONDUITS AND CONDUIT ARRANGEMENTS SHALL BE AS SHOWN ON CONTRACT PLANS.
2. THE RIGID NONMETALLIC CONDUIT SHALL END WITH A FEMALE THREAD COUPLING WITH ITS BOTTOM EDGE FLUSH WITH THE FACE OF THE FOUNDATION. THE CONTRACTOR SHALL GLUE A MALE THREAD FITTING TO THE CONDUIT COUPLING TO EXTEND THE CONDUIT UNDERGROUND WHERE DIRECTED IN THE CONTRACT PLANS.
3. FOR DIMENSIONS OF LIGHTING HARDWARE NOT SHOWN ON THIS SHEET, SEE STANDARD DRAWING E-09 AND E-10.
4. JUNCTION BOX FOUNDATIONS AS SHOWN ON STANDARD DRAWING E-12 ARE PREFERRED OVER CONCRETE BASE SHOWN ON THIS SHEET. CONCRETE BASES SHALL BE USED WHERE JUNCTION BOX FOUNDATIONS WOULD OTHERWISE NOT FIT DUE TO SPACE RESTRICTIONS. CONFIRM THE USE OF CONCRETE BASE WITH THE AUTHORITY PRIOR TO INCLUDING IN DESIGN.
5. CONCRETE BASES SHALL BE CONSTRUCTED WITH CLASS C CONCRETE.
6. REFER TO STANDARD DRAWINGS E-09 AND E-10 FOR ANCHOR BOLT ASSEMBLY DETAILS AND SCHEDULES.
7. MATCH ANCHOR BOLT LOCATIONS WITH THE BASE PLATE BOLT PATTERN.
8. ALL REINFORCEMENT IN PEDESTALS SHALL BE GALVANIZED AS PER ASTM A153.
9. TYPE M CONCRETE BASE SHALL BE UTILIZED IN PARKING AREAS AND OTHER LOCATIONS FOR LIGHT OR CAMERA POLES TO MITIGATE DAMAGE FROM VEHICLES. PORTION OF CONCRETE BASE ABOVE GRADE SHALL BE 36" IN CAR PARKING AREAS AND 72" IN TRUCK PARKING AREAS.
10. ALL OPEN CONDUIT TERMINATIONS SHALL HAVE RODENT BLOCKING MATERIAL. SEE DETAIL ON STANDARD DRAWING E-16.
11. CAMERA CONDUIT TO BE INSTALLED WHERE DIRECTED ON THE PLAN. CONCRETE POLE BASE SHALL BE FINISHED TO ALLOW CAMERA CONDUIT COUPLING TO BE FLUSH WITH THE TOP OF THE FOUNDATION.

12. FOUNDATIONS SHALL BE SIZED BASED ON DESIGN REQUIREMENTS WHERE LIGHT POLES DIFFER FROM STANDARD SIZES. REPLACEMENT FOUNDATIONS SHALL BE SIZED IN-KIND FOR THE FOUNDATION THEY REPLACE.



NEW JERSEY TURNPIKE AUTHORITY
**NEW JERSEY TURNPIKE
 GARDEN STATE PARKWAY**
 STANDARD DRAWINGS

LIGHTING STANDARD CONCRETE BASE

OFFICE OF THE CHIEF ENGINEER
 NEW JERSEY TURNPIKE AUTHORITY
 WOODBRIDGE, NEW JERSEY

STANDARD DRAWING

REV.	DESCRIPTION	DATE
1	UPDATED LIGHT POLE BASE LP	01/24
0	REISSUED DRAWING	09/21

E-11