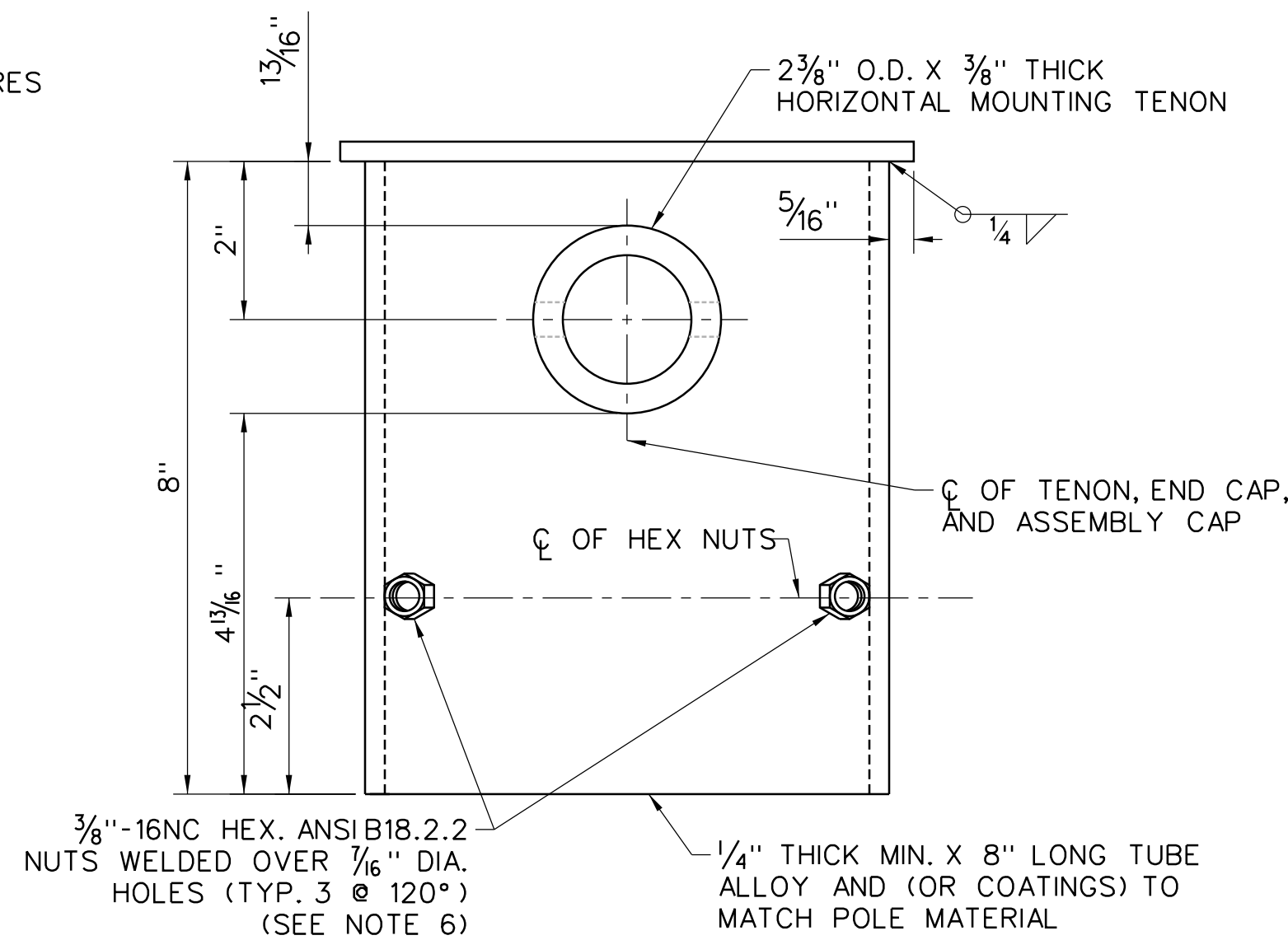
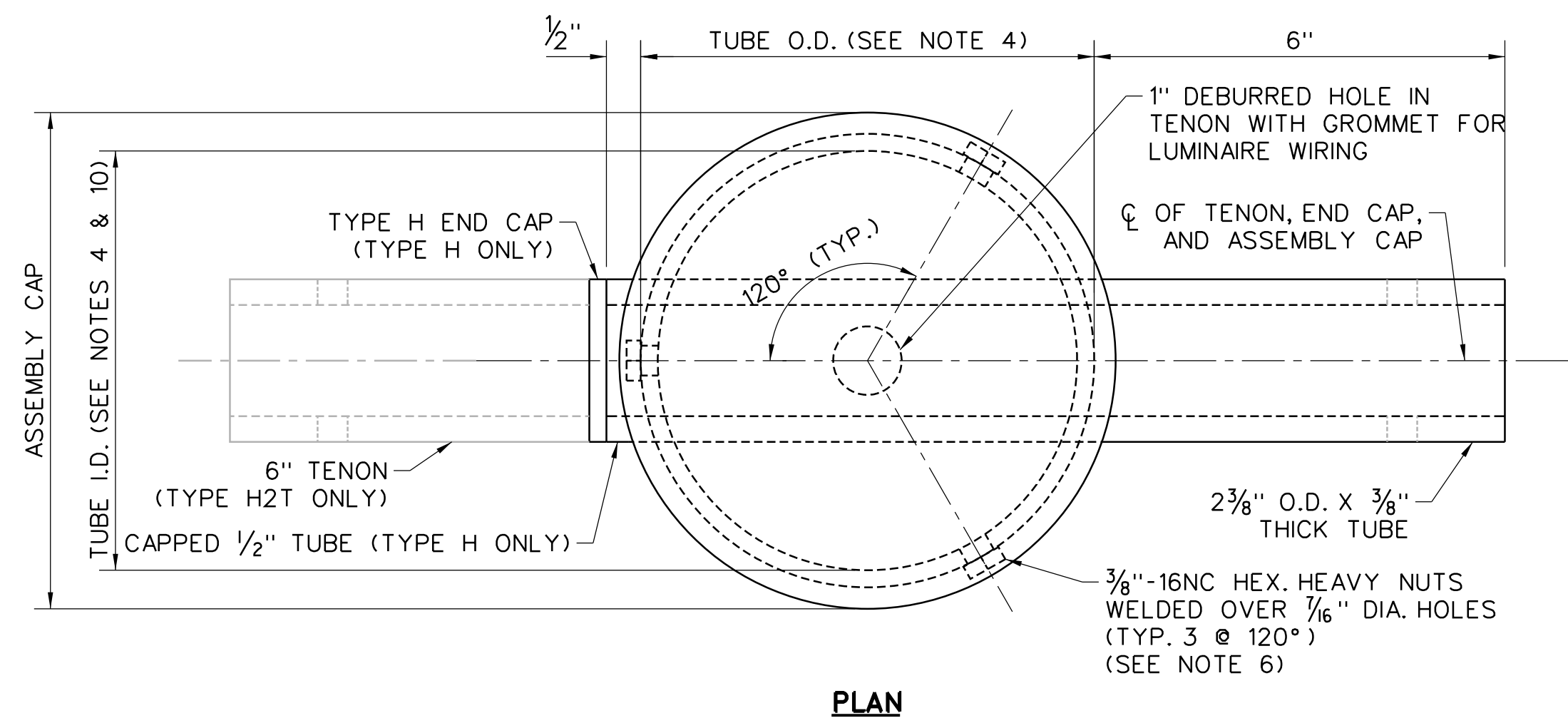


**RIGHT PARTIAL SECTION**



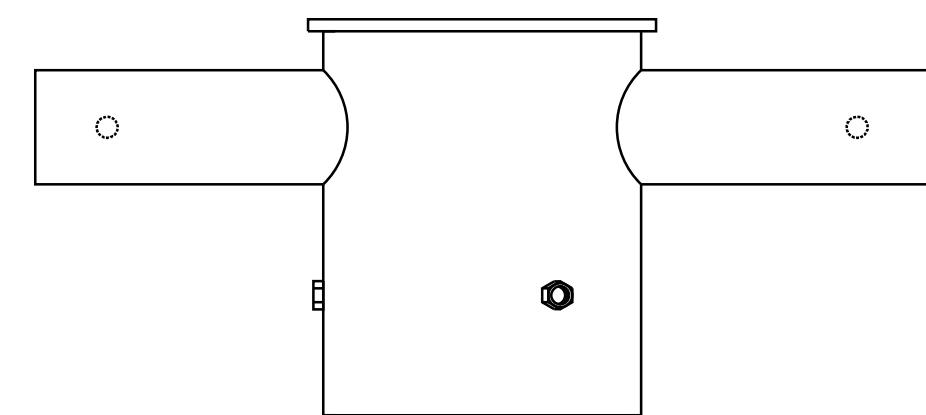
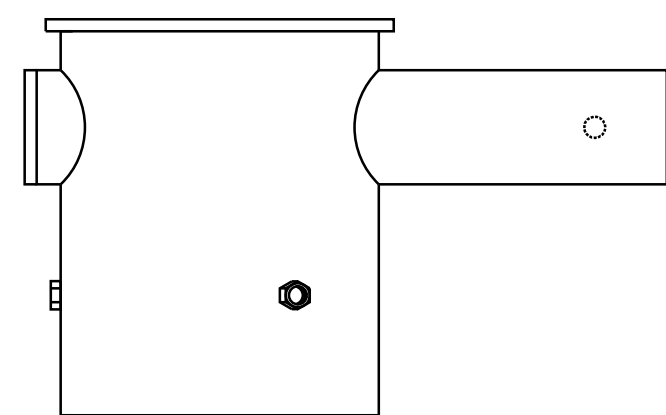
**FRONT ELEVATION**



**PLAN**

**LUMINAIRE MOUNTING ASSEMBLY  
TYPE H AND H2T**

(TYPE H SINGLE TENON, TYPE H2T TWIN TENON AT 180°)  
SCALE: 6" = 1'-0"

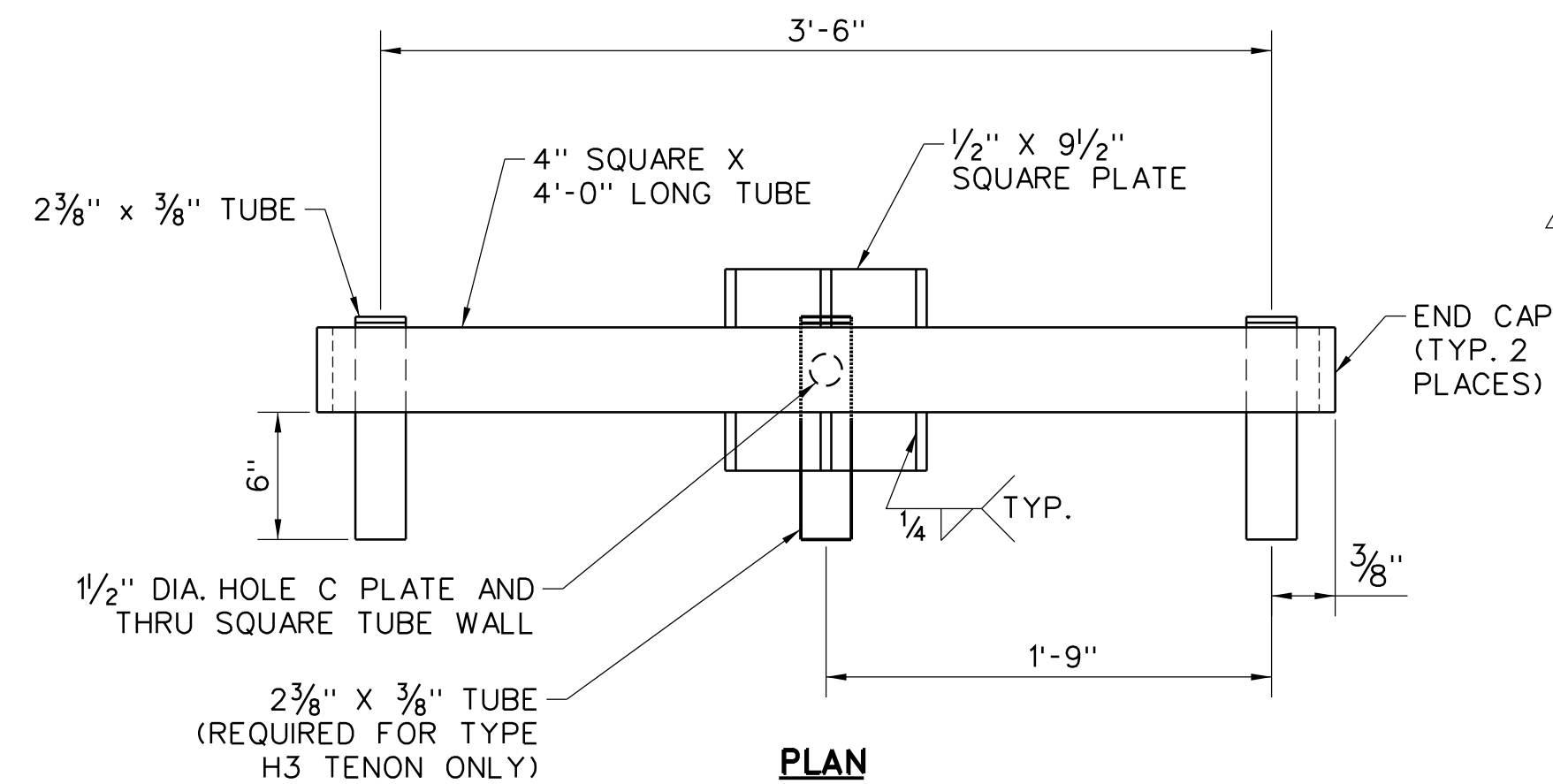


**TYPE H - SINGLE TENON**

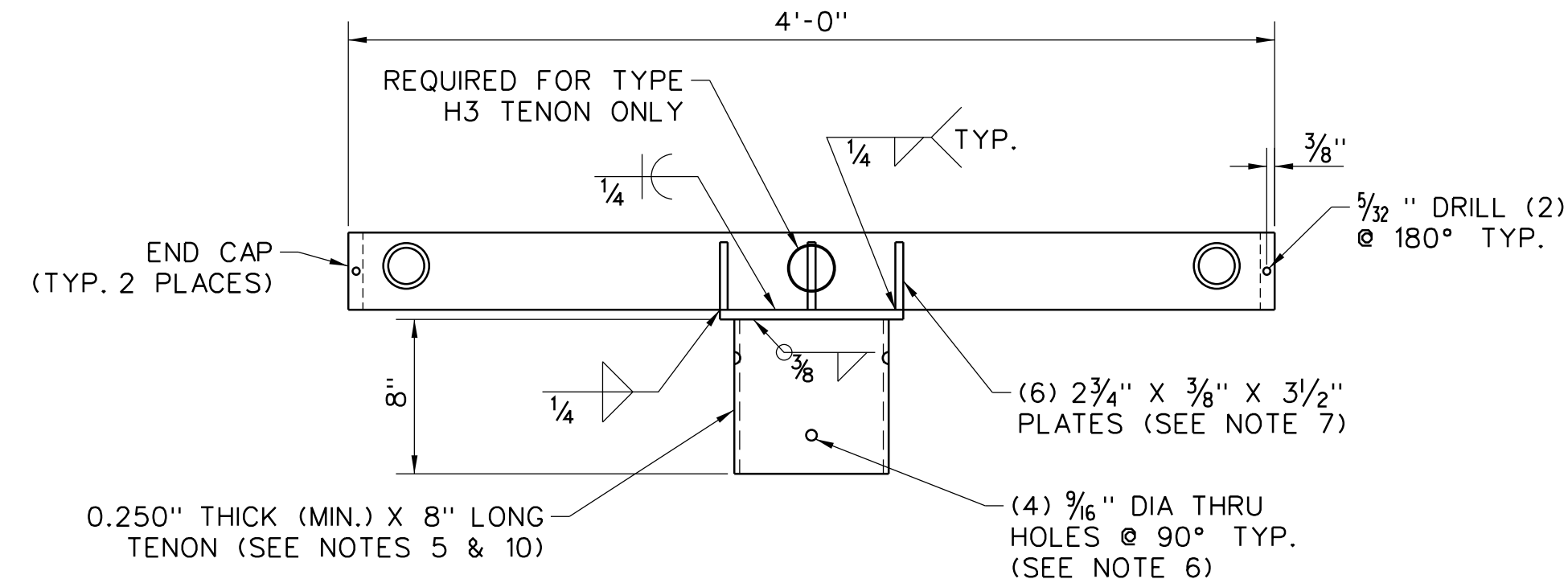
**TYPE H2T - TWIN TENON**

**TYPE H AND H2T ELEVATION VIEW**

SCALE: 3" = 1'-0"



**PLAN**



**ELEVATION**

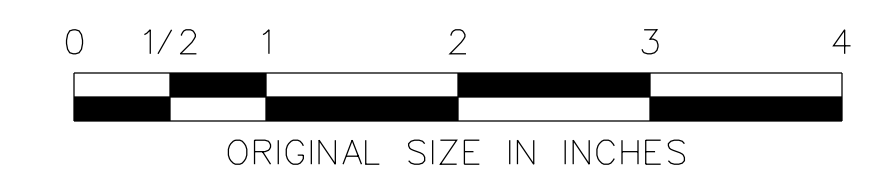
**LUMINAIRE MOUNTING ASSEMBLY  
TYPE H2 AND H3**

SCALE: 1/2" = 1'-0"

**NOTES:**

- LUMINAIRE MOUNTING ASSEMBLY DETAILS SHOWN SHALL BE USED FOR STEEL AND ALUMINUM LIGHTING STANDARDS.
- LUMINAIRE MOUNTING ASSEMBLY FOR ALUMINUM LIGHTING STANDARD SHALL BE MADE OUT OF ALLOY 6061-T6 MATERIAL TO MATCH LIGHTING STANDARD MATERIAL.
- LUMINAIRE MOUNTING ASSEMBLY FOR STEEL LIGHTING STANDARD SHALL BE MADE OUT OF ASTM A572, GR. 55 OR 65 MATERIAL TO MATCH LIGHTING STANDARD MATERIAL.
- LUMINAIRE MOUNTING ASSEMBLY INNER AND OUTER DIAMETER SHALL BE SIZED BASED ON THE LIGHTING STANDARD POLE OUTER DIAMETER.
- H2T TWIN LUMINAIRES SHALL BE 180° AWAY FROM EACH OTHER.
- LUMINAIRE MOUNTING ASSEMBLIES SHALL BE FASTENED TO POLE SHAFT WITH HARDWARE AS SHOWN BELOW:  
TYPE H AND H2T  
- (3) 3/8" - 16NC X 1" LONG SQ. HEAD CAP POINT, SET SCREWS  
- (3) 3/8" - 16NC JAM NUTS  
TYPE H2 AND H3  
- (2) 1/2" - 13NC X 8" LONG STUDBOLT  
- (4) 1/2" - 13NC JAM NUTS  
- (4) 1/2" LOCKWASHER, FLATWASHER, AND SCREWS
- MOUNTING ASSEMBLY SHALL BE MODIFIED FOR TYPE H3 TO HAVE ONLY FOUR (4) PLATES.
- ALL HARDWARE SHALL BE STAINLESS STEEL GRADE 304 OR BETTER, UNLESS OTHERWISE NOTED.
- WHEN HORIZONTAL MOUNTING ADAPTERS ARE USED TO INSTALL THE GALLEON FIXTURE, A THROUGH BOLT SHALL BE INSTALLED TO SECURE MAST ARM ADAPTER AND TENON. TENON REQUIRES A HOLE FOR A 3/8"-16 STAINLESS STEEL HEX HEAD BOLT WITH LOCK WASHER AND DOUBLE NUT, LENGTH AS REQUIRED. THE TENON ADAPTER MAY BE MANUFACTURED WITH THIS HOLE OR THE HOLE MAY BE FIELD-DRILLED.

10. THE CONTRACTOR SHALL BE RESPONSIBLE FOR FIELD INSPECTION OF ALL POLES TO ENSURE EACH MOUNTING ADAPTER IS THE CORRECT TYPE AND SIZE, AND IS MOUNTED IN THE APPROPRIATE METHOD FOR EACH LIGHT POLE.



NEW JERSEY TURNPIKE AUTHORITY  
**NEW JERSEY TURNPIKE  
GARDEN STATE PARKWAY**  
STANDARD DRAWINGS

**TYPE H POLE-TOP LUMINAIRE  
MOUNTING ASSEMBLIES**

OFFICE OF THE CHIEF ENGINEER  
NEW JERSEY TURNPIKE AUTHORITY  
WOODBRIIDGE, NEW JERSEY

STANDARD DRAWING

1    ADDED NOTE    01/24  
0    REISSUED DRAWING    09/21  
REV.    DESCRIPTION    DATE

E-04