

## Attachment 2024-2.0: Update to Additional Guidance when Reporting Category A Conditions

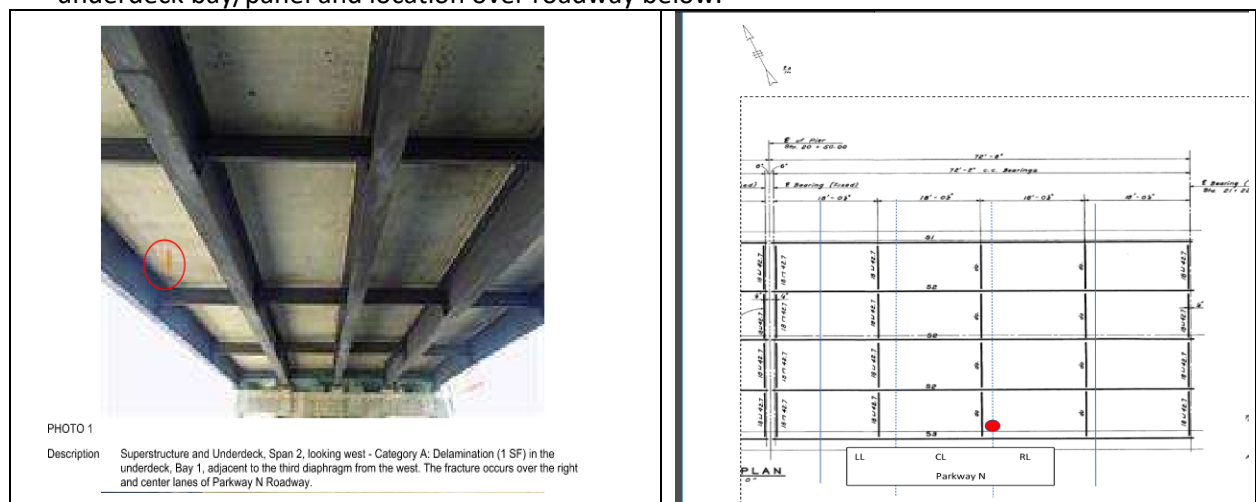
This directive has been posted to clarify requirements for defect sketches which are included as attachments to Category A Reports. See **bold** text below.

The initial notification (BI Note 2022-1.0 dated 1/14/22) was created in response to requests from the Authority's Maintenance Department and outside utility companies for additional information to be included in the report prior to submitting to Maintenance or Engineering.

1. For Category A reports related to areas of underdeck / soffit / fascia / haunch deterioration including delaminated / loose / hollow sounding reinforced concrete and delaminated / hollow sounding concrete on Prestressed I-beams and box girders, the Authority's Maintenance Department has requested that all photos of defects include a shape / outline / arrow to show where the defect is in relation to the beams / deck bays.

In addition, a framing plan, aerial, or sketch showing the location of the delaminated concrete recommended for removal shall be included. **No other defects should be included in the sketch other than the areas that require concrete removal.**

- If using a framing plan: include defect location(s), roadway name, and traffic lanes
- If using an aerial or underclearance plan: include defect locations, roadway name and traffic lanes, and fascia beam numbers for orientation
- Category A Report description shall refer to the sketch and photos instead of describing all locations through text. Photos shall continue to clearly describe location and quantity of the defect including underdeck bay/panel and location over roadway below.



2. Lighting standard deficiencies, such as missing access covers with exposed wires, which are Submitted to Engineering and the responsibility of an outside agency are to include the ID # in the description and a photograph of the identification plate / sticker on the lighting standard. This was requested by PSE&G to better identify maintenance responsibility and location of lighting standards called out for priority repair.

