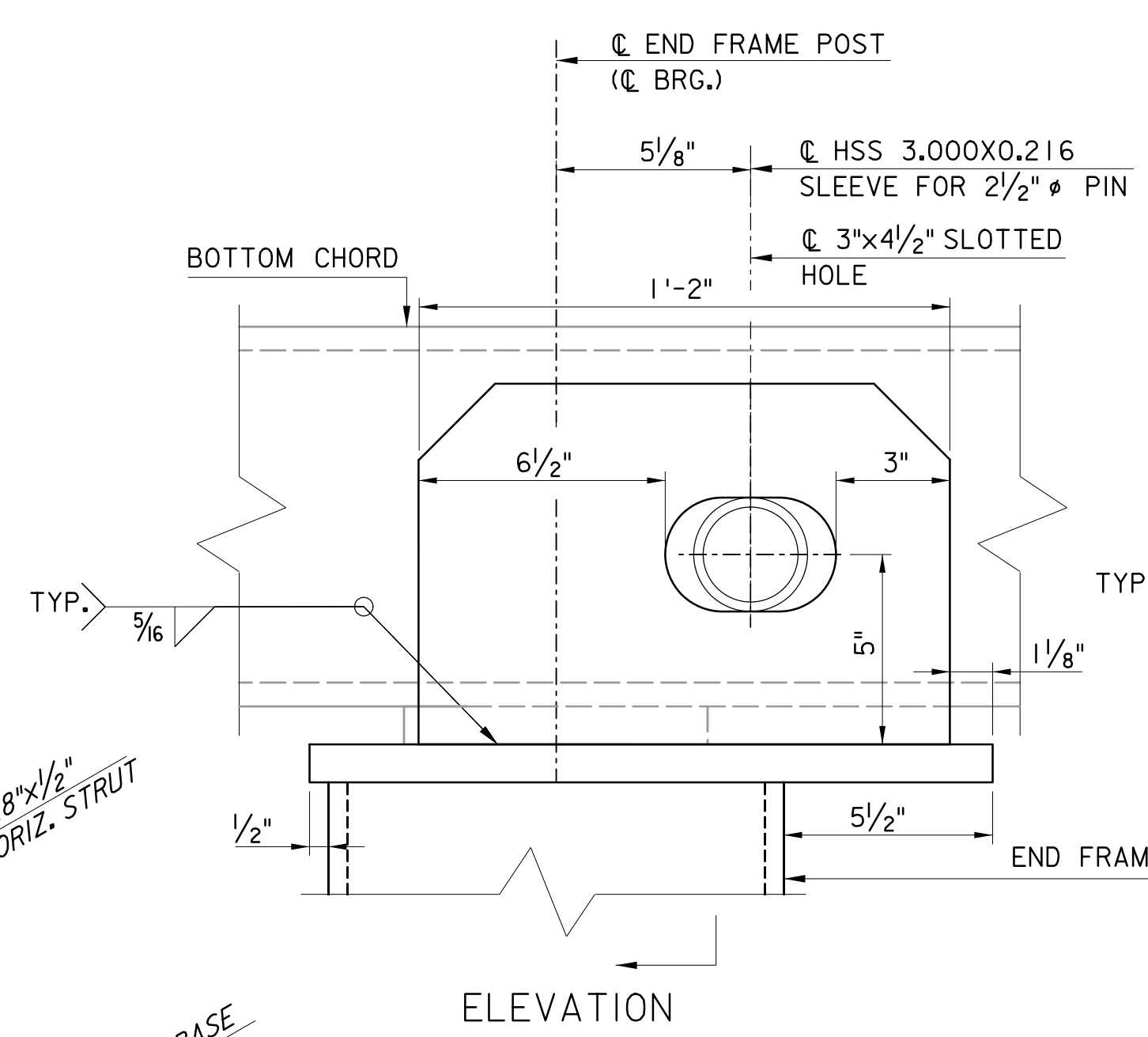
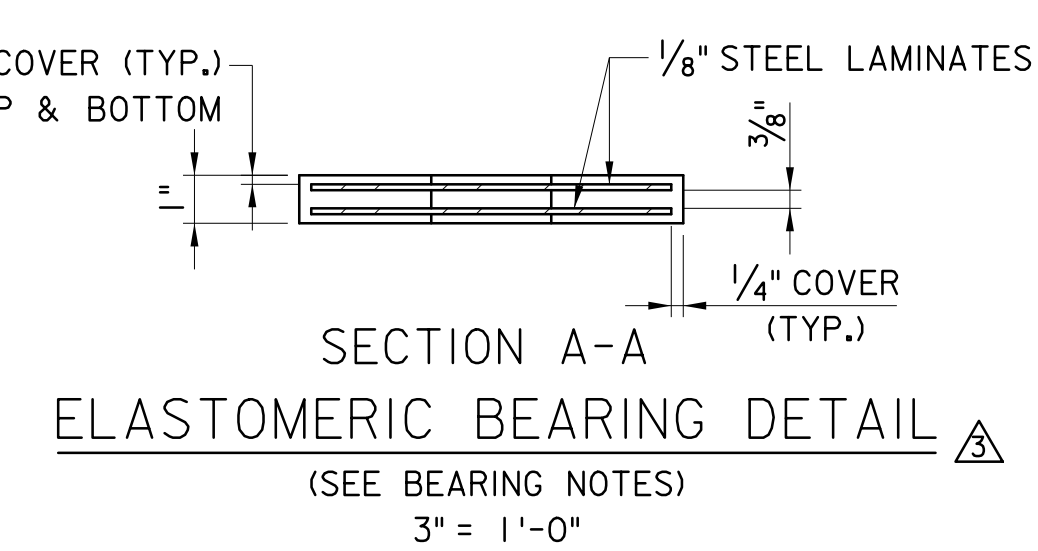
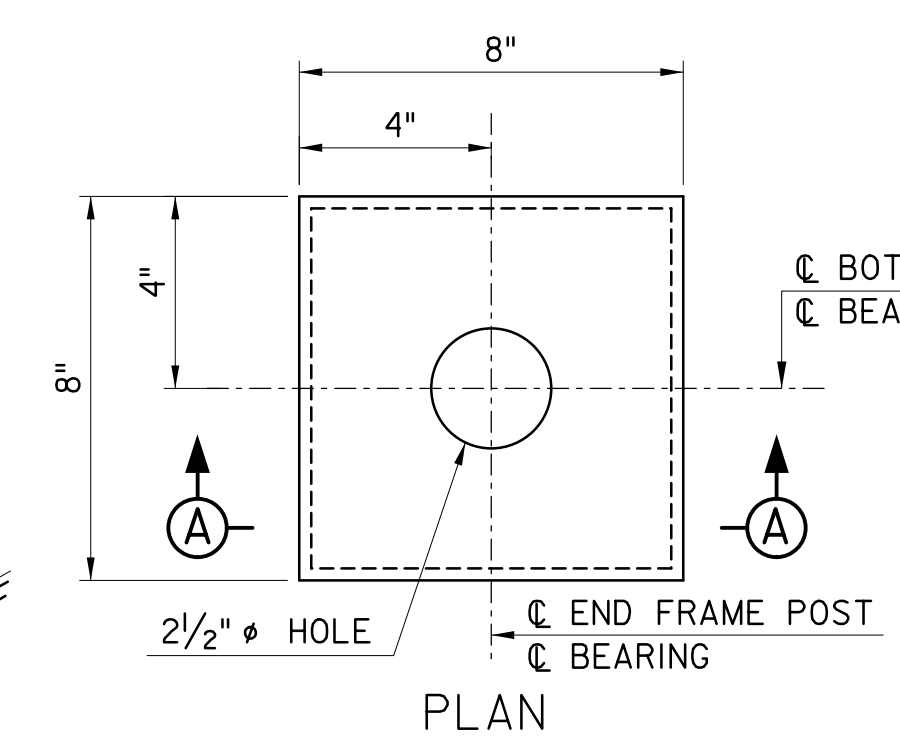


EXPLODED DETAIL OF END FRAME ASSEMBLY
 N.T.S.

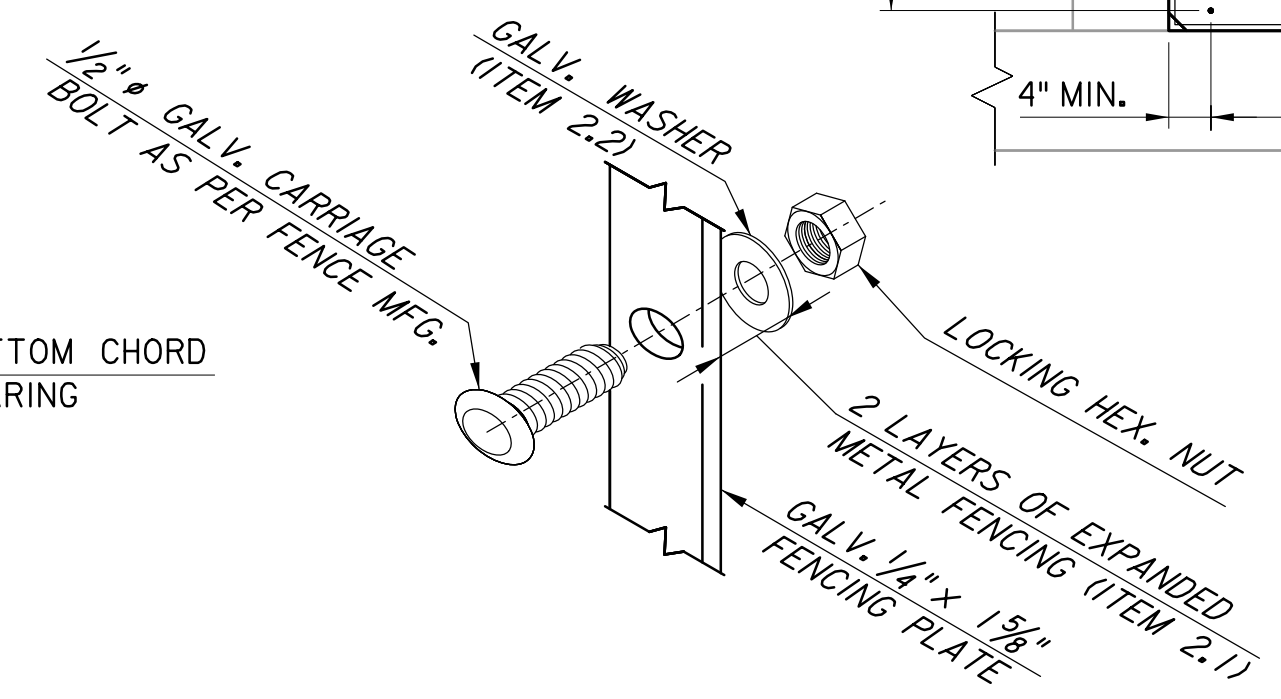


LOCK PIN BRACKET
 DETAIL
 3" = 1'-0"

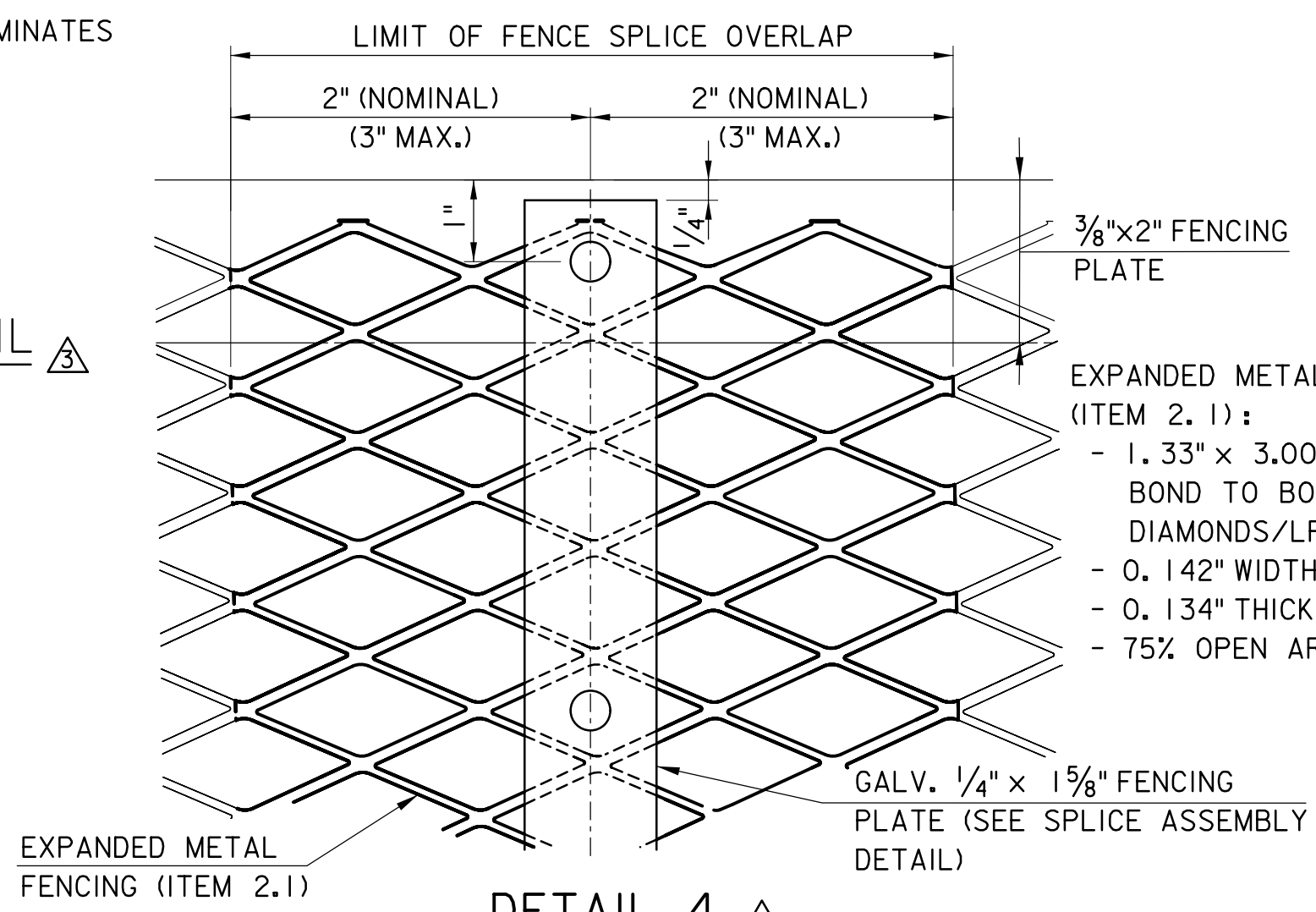


BEARING NOTES:

- ELASTOMERIC BEARINGS SHALL CONFORM TO SECTION 408 OF THE NJTA STANDARD SPECIFICATIONS.
- STEEL LAMINATES SHALL BE ASTM A709, A36 OR A1011 GRADE 36. SMOOTH AND DEBURR CUT STEEL PLATES BY GRINDING, GRIT BLAST AND DECREASE ALL STEEL PLATES. DO NOT GALVANIZE OR METALIZE STEEL LAMINATES.
- OVERALL FABRICATION METHODS AND QUALITY INSPECTION PROCEDURE SHALL BE INCLUDED AS WRITTEN PROCEDURE WITH SHOP DRAWING SUBMISSION.
- ALL BEARING PADS ARE TO BE MOLDED TO DESIGN DIMENSIONS. CUTTING TO SIZE AFTER FABRICATION IS PROHIBITED.
- SHEAR MODULUS, G = 130 PSI. HARDNESS = 60 OR 70 DUROMETER.
- COST OF ELASTOMERIC BEARING PADS SHALL BE INCLUDED IN THE ASSOCIATED SIGN STRUCTURE PAY ITEM.

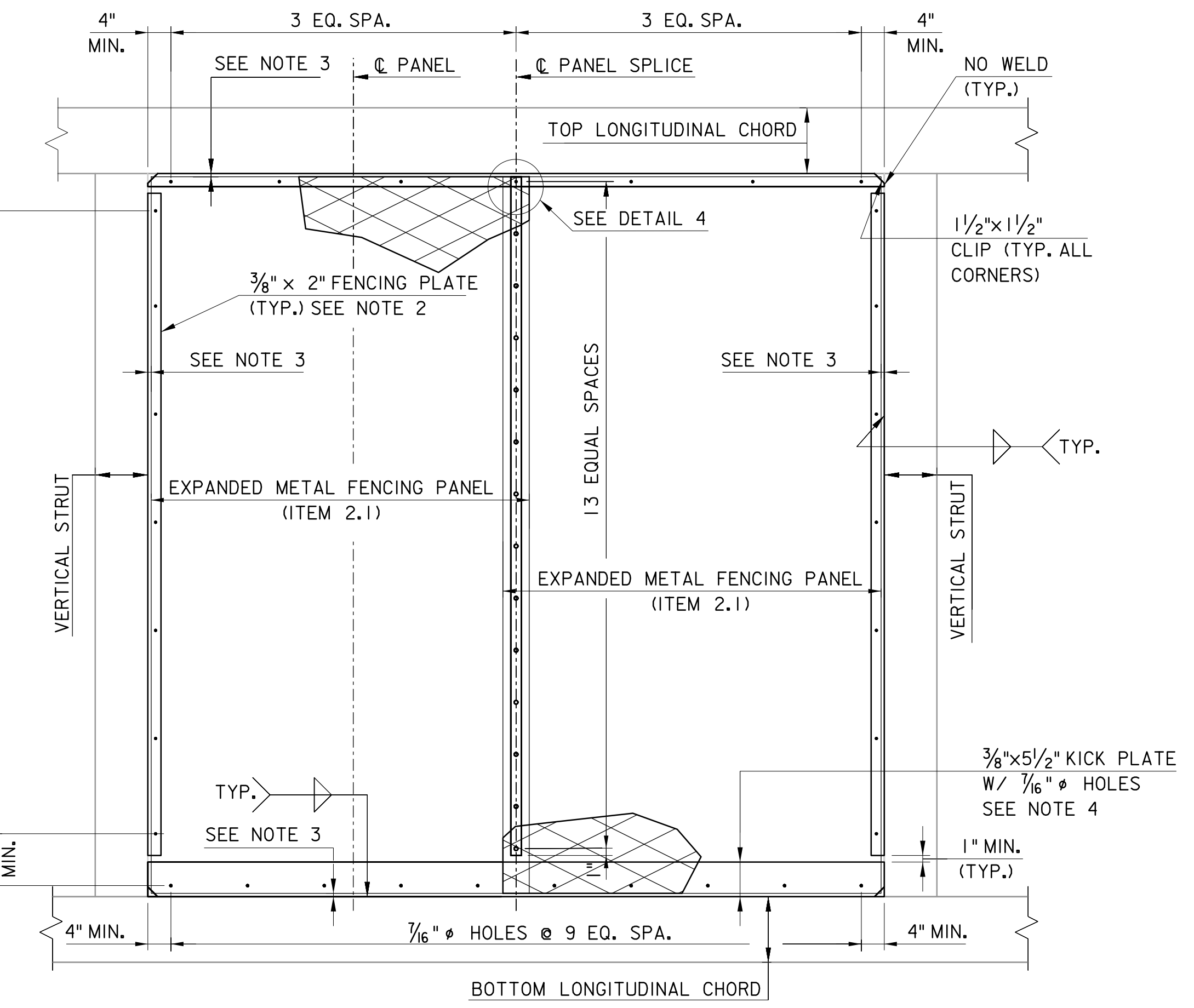


ISOMETRIC OF SPLICE ASSEMBLY
 N.T.S.



DETAIL 4
 EXPANDED METAL FENCE SPLICE DETAIL
 N.T.S.

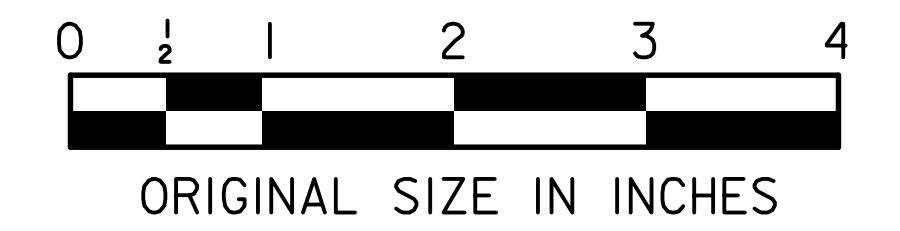
APP. NO.	DATE	REVISION
3	10/23	ADDED BEARING DETAIL, ADDED BEARING NOTES AND CALLED OUT HOLE DIAMETER
2	4/16	REVISED LOCK PIN BRACKET DETAIL
1	3/11	REVISED DETAILS AND NOTES
0	8/08	ORIGINAL DRAWING



10'-0" TRUSS PANEL
 EXPANDED METAL FENCING DETAIL
 3/4" = 1'-0"

NOTES:

- THE UNTHREADED GRIP LENGTH OF THE LOCK PIN SHALL BE 13 3/4". PLACE A RECESS NUT AT EACH END OF THE PIN.
- DRILL 1/16" DIA. HOLES FOR 3/8" BOLTS IN FENCING PLATES.
- EXPANDED METAL FENCING SHALL BE A MINIMUM OF 1/2" CLEAR TO ALL CHORD AND STRUT MEMBERS.
- KICK PLATE SHALL ONLY BE FURNISHED AT BOTTOM LONG. CHORDS.
- FOR ITEMS LIST, SEE SHEET VM-10



NEW JERSEY TURNPIKE AUTHORITY
NEW JERSEY TURNPIKE
 OVERHEAD SPAN VMS/VSLs SUPPORT STRUCTURES
TRUSS AND FENCE DETAILS
 OFFICE OF THE CHIEF ENGINEER
 NEW JERSEY TURNPIKE AUTHORITY
 WOODBRIDGE NEW JERSEY
 2008 STANDARD DRAWING VM-3
 SHEET NO. OF