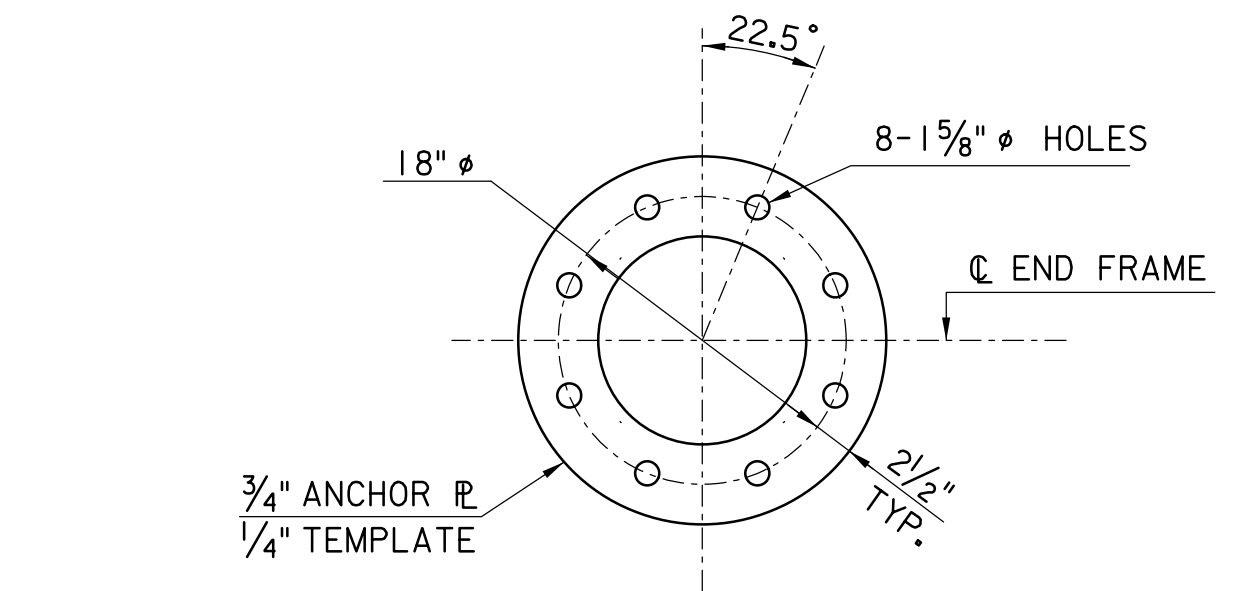
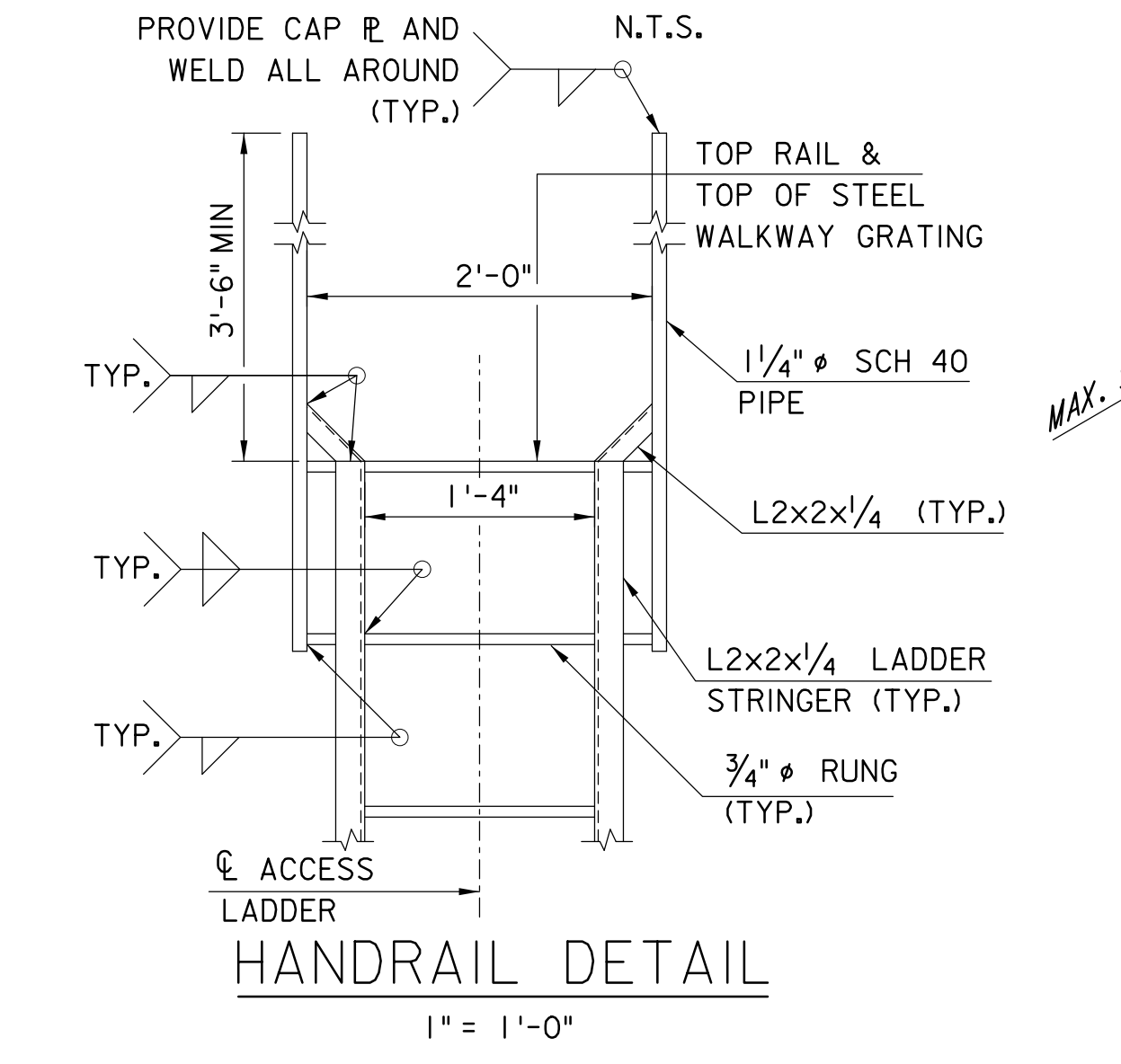


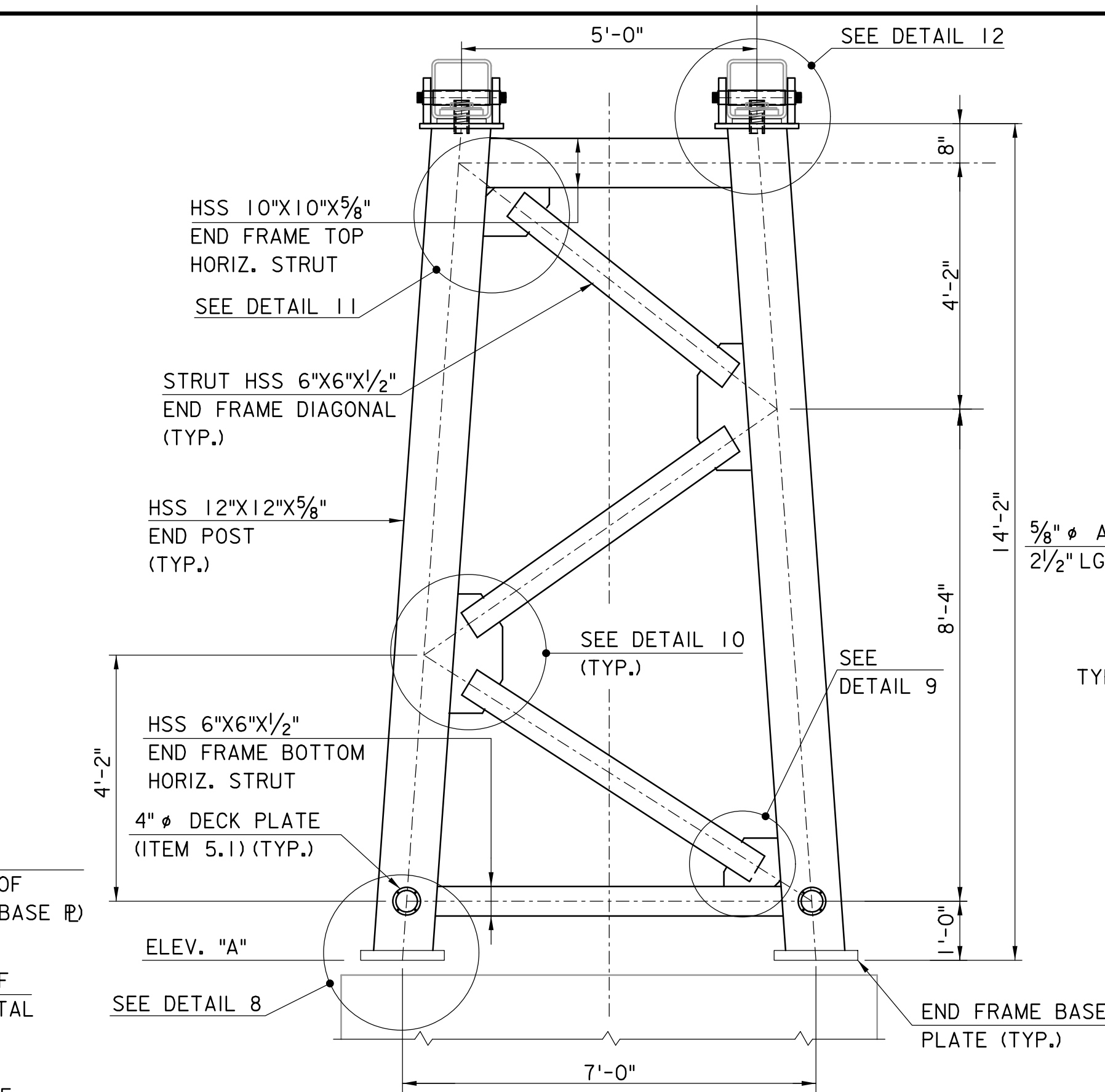
DETAIL 8
N.T.S.



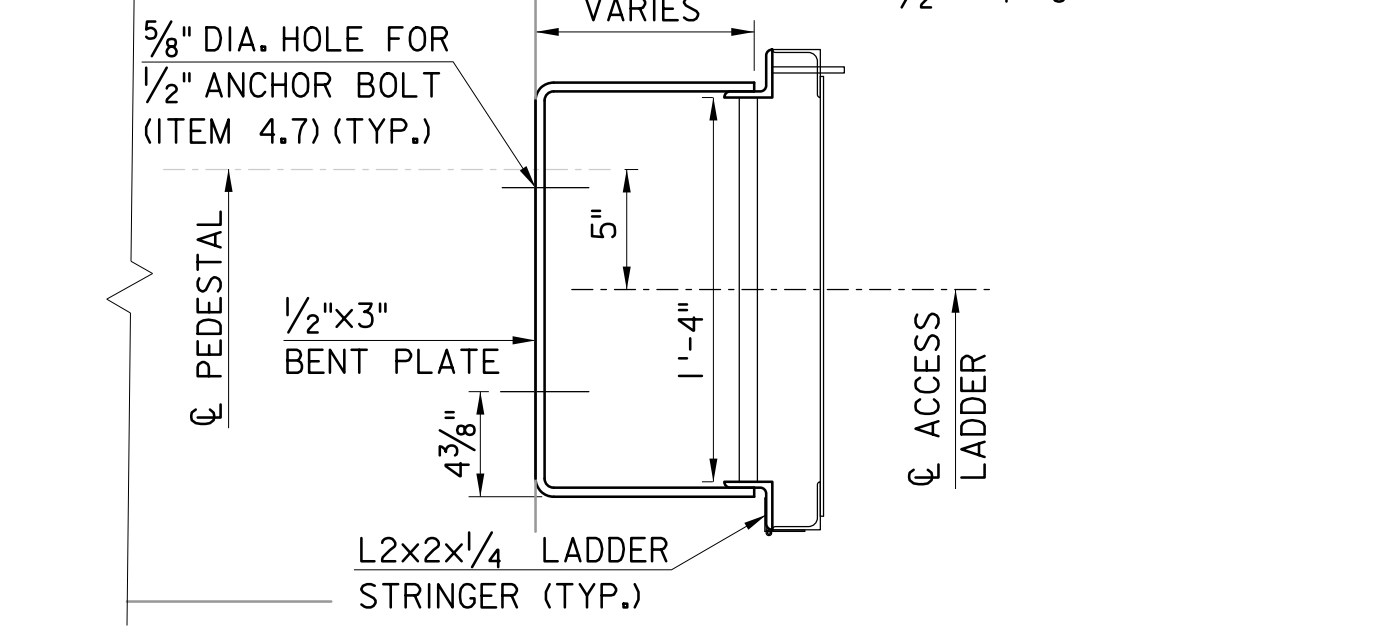
ANCHOR PLATE & TEMPLATE DETAIL
(SEE ANCHOR BOLT DETAIL ON SHEET VM-8 FOR PLACEMENT)
N.T.S.



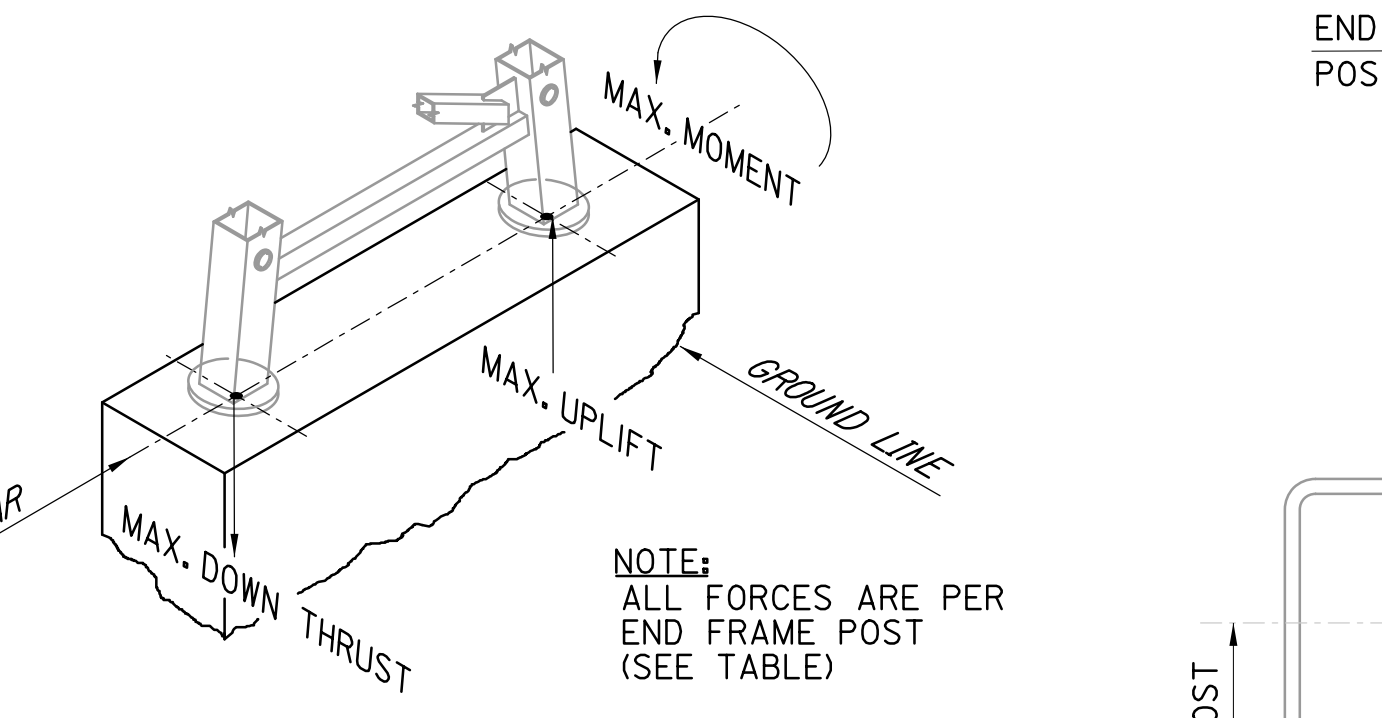
HANDRAIL DETAIL
1" = 1'-0"



END FRAME ELEVATION
1/2" = 1'-0"

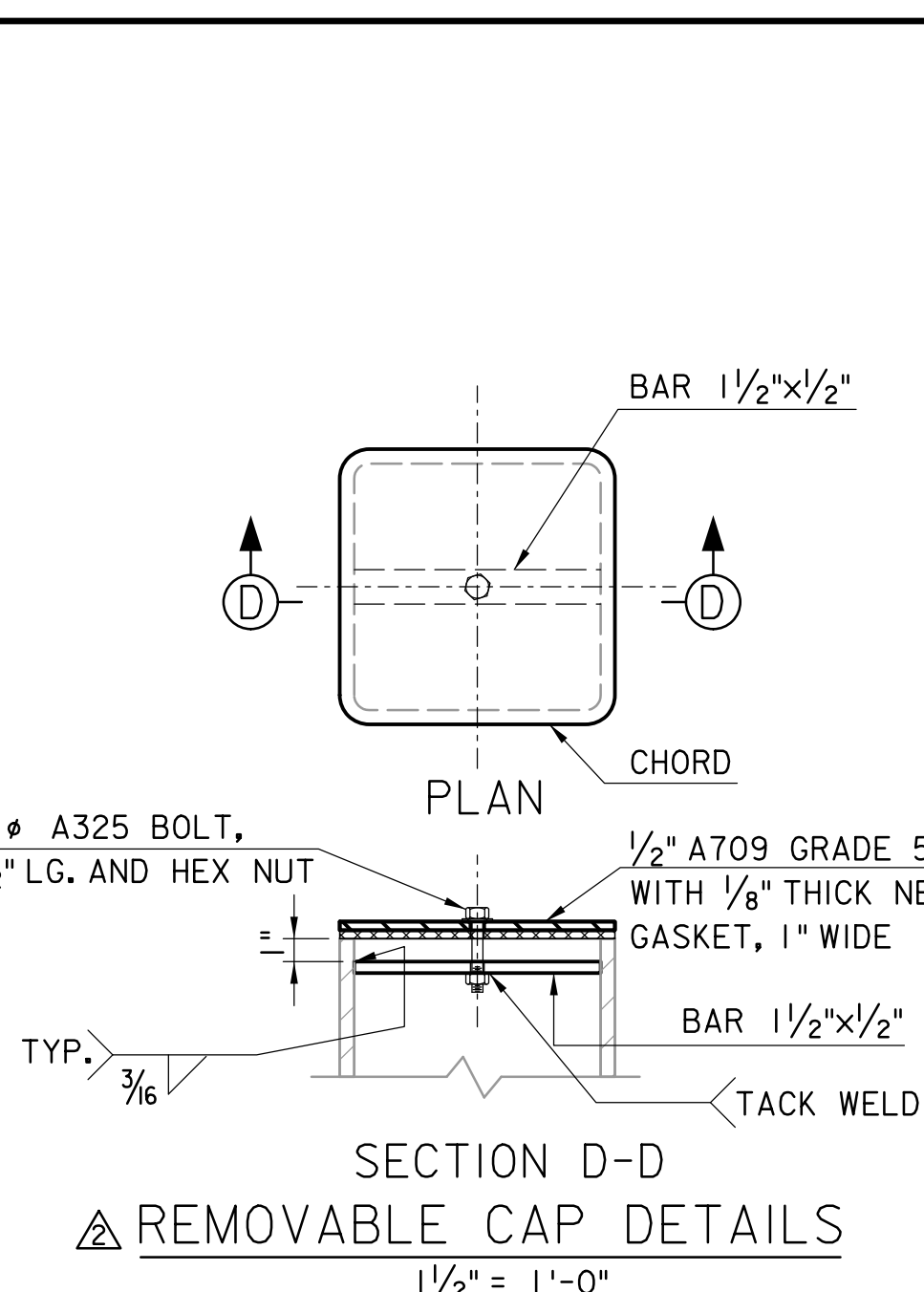


LADDER ATTACHMENT TO PEDESTAL
(FOR ADDITIONAL DETAILS NOT SHOWN, SEE DETAIL 13)
1/2" = 1'-0"

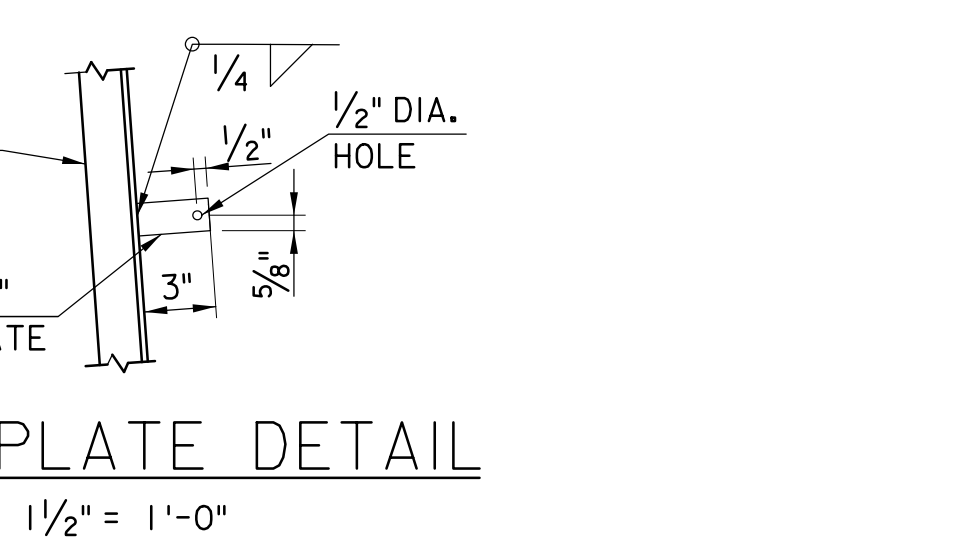


FOUNDATION LOADING DIAGRAM
N.T.S.

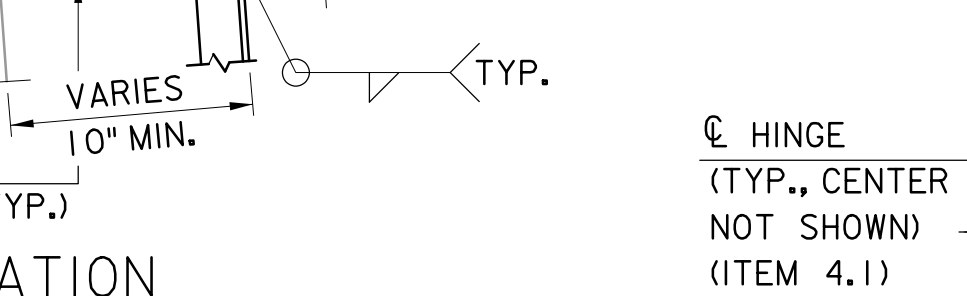
FOUNDATION DESIGN LOADS (PER POST)				
STRUCTURE TYPE	DOWN THRUST (KIP)	UPLIFT (KIP)	SHEAR (KIP)	MOMENT (KIP-FT)
MAINLINE SPANS ≤ 105'	-117.5	75.2	23.2	29.7
MAINLINE 105' < SPANS ≤ 120'	-135.0	89.2	26.2	36.0
RAMP SPANS ≤ 120'	-97.9	57.8	19.9	30.1



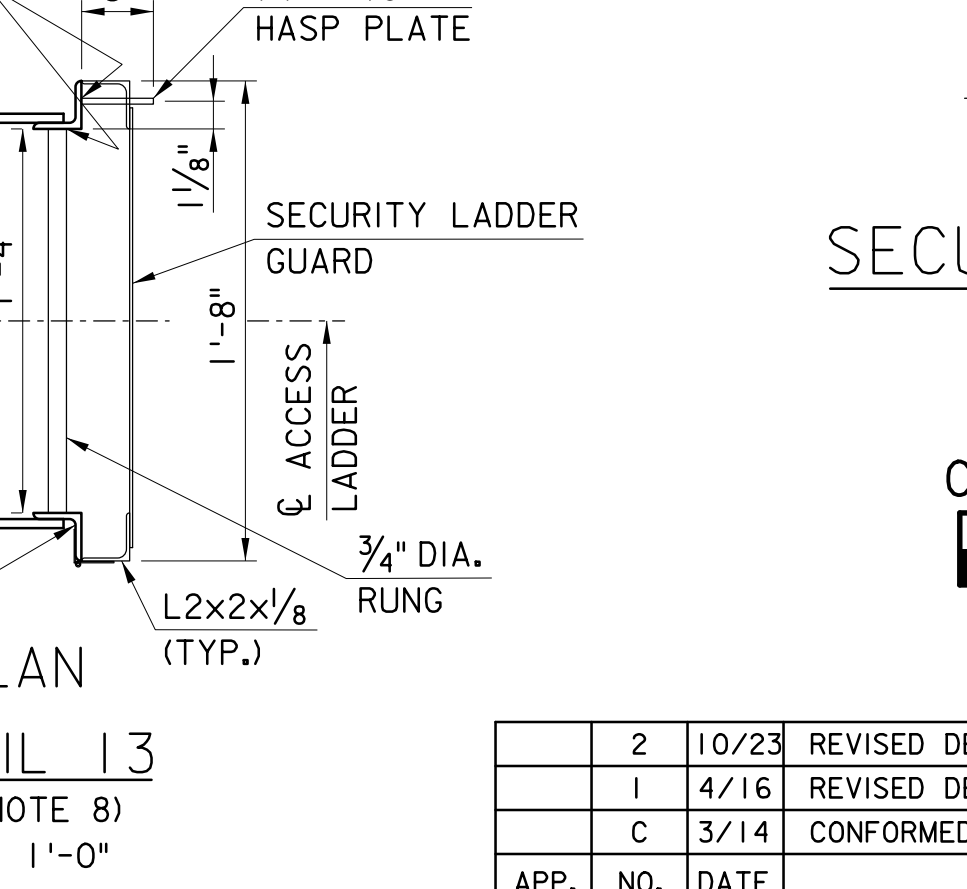
SECTION D-D
REMOVABLE CAP DETAILS
1/2" = 1'-0"



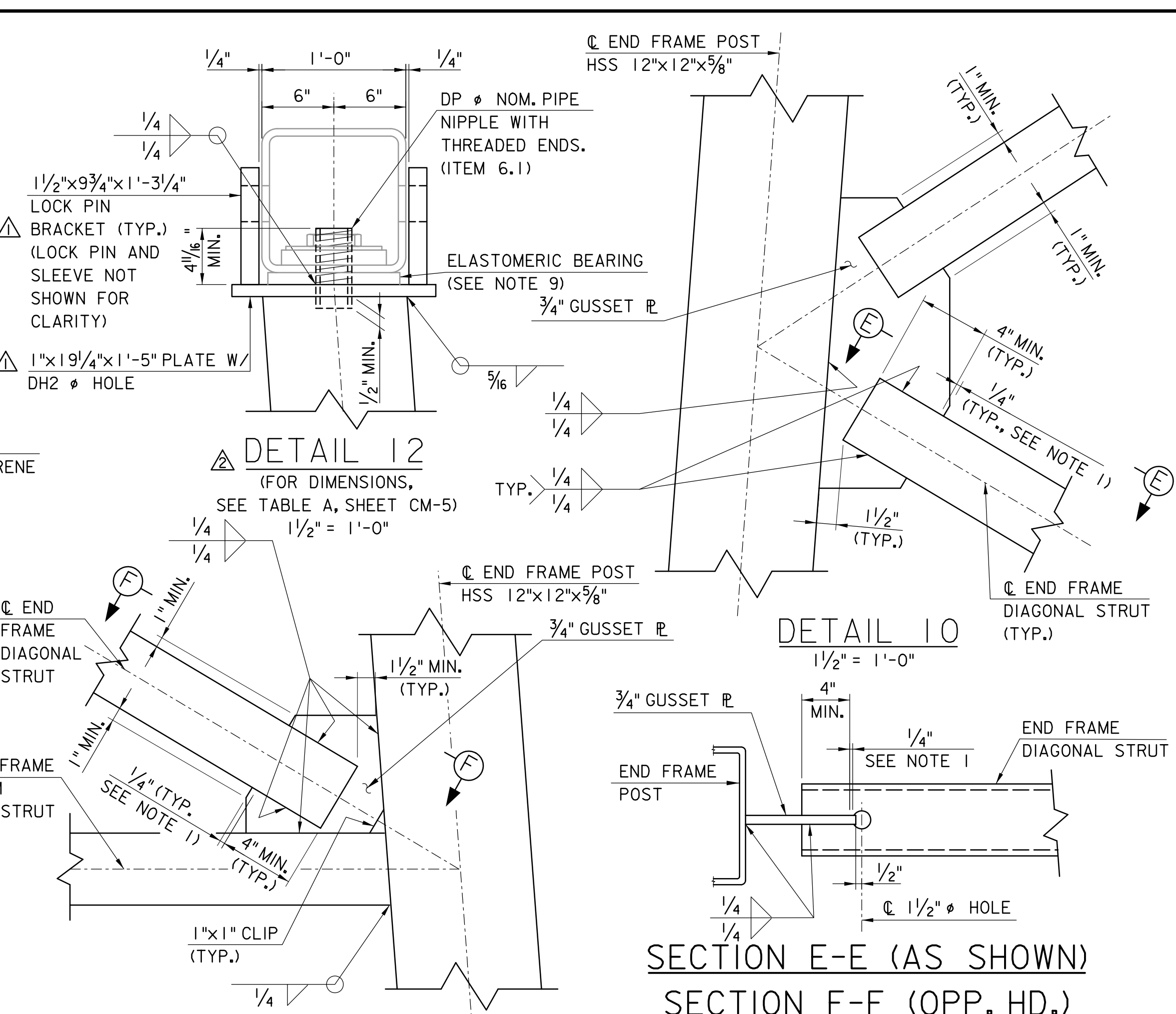
HASP PLATE DETAIL
1/2" = 1'-0"



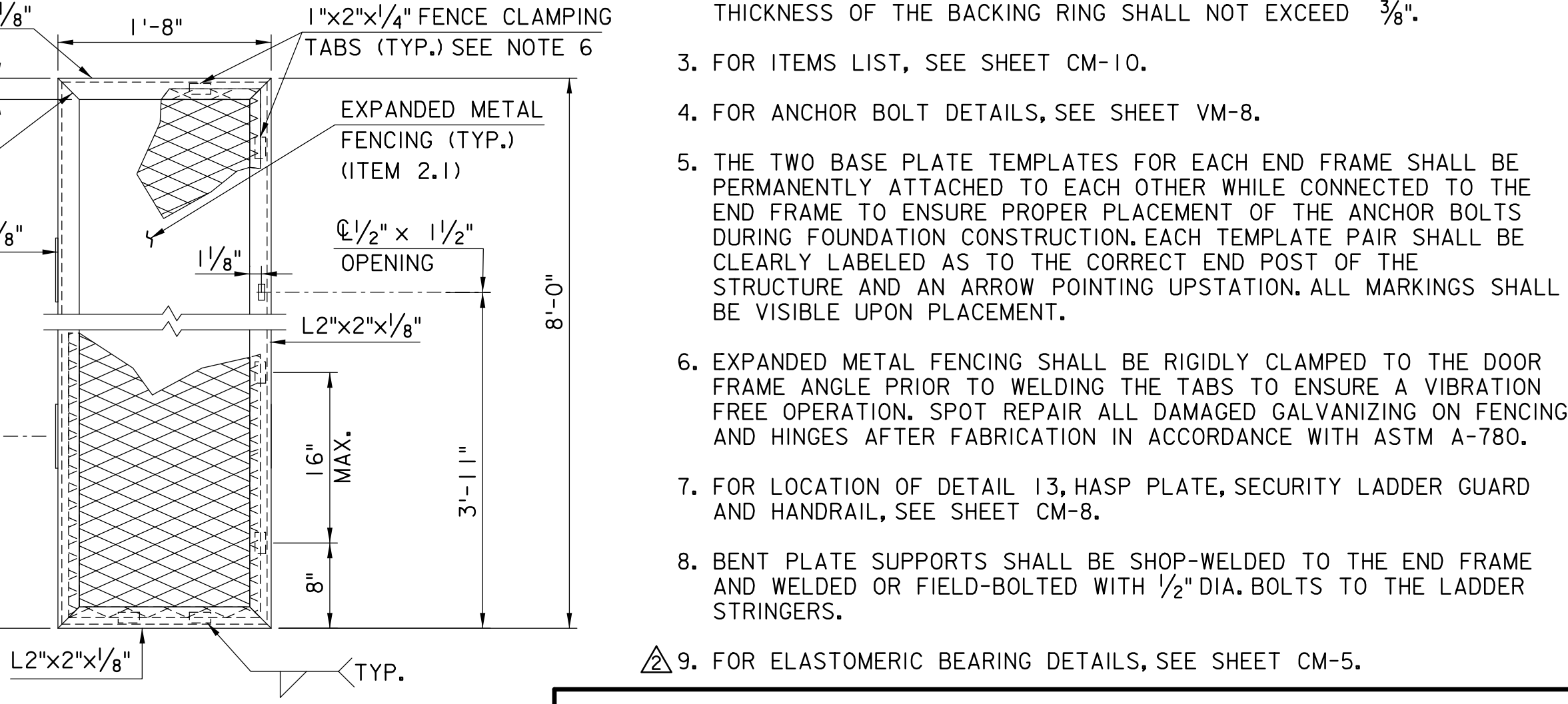
ELEVATION



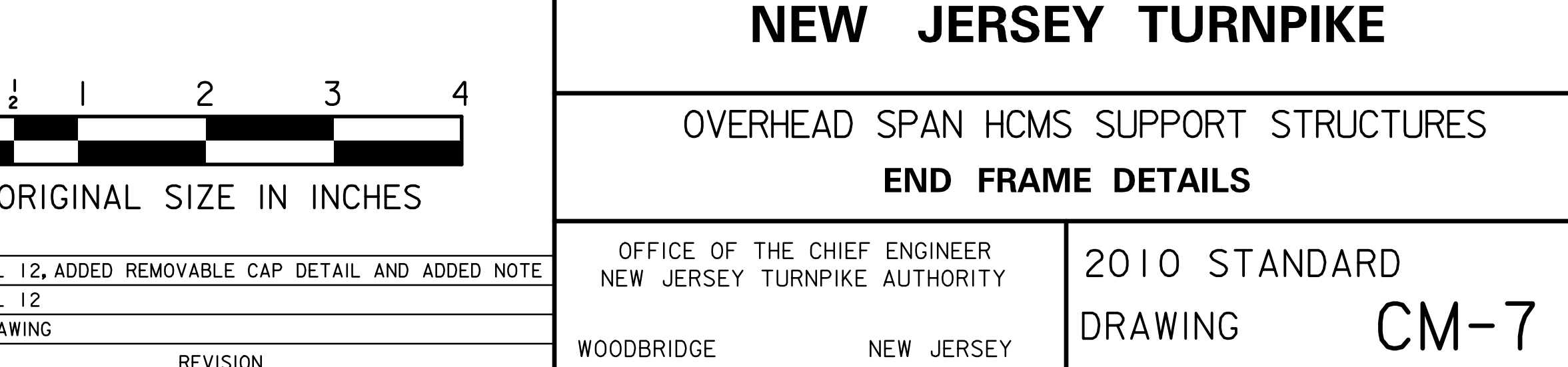
DETAIL 13
(SEE NOTE 8)
1/2" = 1'-0"



DETAIL 12
(FOR DIMENSIONS, SEE TABLE A, SHEET CM-5)
1/2" = 1'-0"

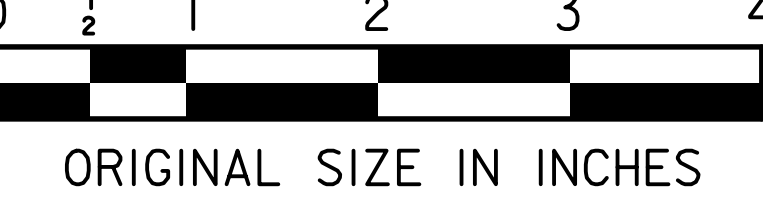


DETAIL 9 (AS SHOWN)
DETAIL 11 (SIMILAR)
1/2" = 1'-0"



SECURITY LADDER GUARD
1" = 1'-0"

- NOTES:**
1. WELDS FOR HSS TO GUSSET PLATE CONNECTIONS SHALL BE TERMINATED 1/4" FROM THE EDGE OF THE GUSSET PLATE.
 2. FULL PENETRATION WELDED END POST TO BASE PLATE CONNECTION WITH THE BACKING RING ATTACHED TO THE PLATE WITH A CONTINUOUS FILLET WELD AROUND THE INTERIOR FACE OF THE BACKING RING. THE THICKNESS OF THE BACKING RING SHALL NOT EXCEED 3/8".
 3. FOR ITEMS LIST, SEE SHEET CM-10.
 4. FOR ANCHOR BOLT DETAILS, SEE SHEET VM-8.
 5. THE TWO BASE PLATE TEMPLATES FOR EACH END FRAME SHALL BE PERMANENTLY ATTACHED TO EACH OTHER WHILE CONNECTED TO THE END FRAME TO ENSURE PROPER PLACEMENT OF THE ANCHOR BOLTS DURING FOUNDATION CONSTRUCTION. EACH TEMPLATE PAIR SHALL BE CLEARLY LABELED AS TO THE CORRECT END POST OF THE STRUCTURE AND AN ARROW POINTING UPSTATION. ALL MARKINGS SHALL BE VISIBLE UPON PLACEMENT.
 6. EXPANDED METAL FENCING SHALL BE RIGIDLY CLAMPED TO THE DOOR FRAME ANGLE PRIOR TO WELDING THE TABS TO ENSURE A VIBRATION FREE OPERATION. SPOT REPAIR ALL DAMAGED GALVANIZING ON FENCING AND HINGES AFTER FABRICATION IN ACCORDANCE WITH ASTM A-780.
 7. FOR LOCATION OF DETAIL 13, HASP PLATE, SECURITY LADDER GUARD AND HANDRAIL, SEE SHEET CM-8.
 8. BENT PLATE SUPPORTS SHALL BE SHOP-WELDED TO THE END FRAME AND WELDED OR FIELD-BOLTED WITH 1/2" DIA. BOLTS TO THE LADDER STRINGERS.
 9. FOR ELASTOMERIC BEARING DETAILS, SEE SHEET CM-5.



ORIGINAL SIZE IN INCHES

APP.	NO.	DATE	REVISION
	2	10/23	REVISED DETAIL 12, ADDED REMOVABLE CAP DETAIL AND ADDED NOTE
	1	4/16	REVISED DETAIL 12
	C	3/14	CONFORMED DRAWING

NEW JERSEY TURNPIKE AUTHORITY
NEW JERSEY TURNPIKE

OVERHEAD SPAN HCMS SUPPORT STRUCTURES
END FRAME DETAILS

OFFICE OF THE CHIEF ENGINEER
NEW JERSEY TURNPIKE AUTHORITY

2010 STANDARD
DRAWING **CM-7**

WOODBRIDGE NEW JERSEY