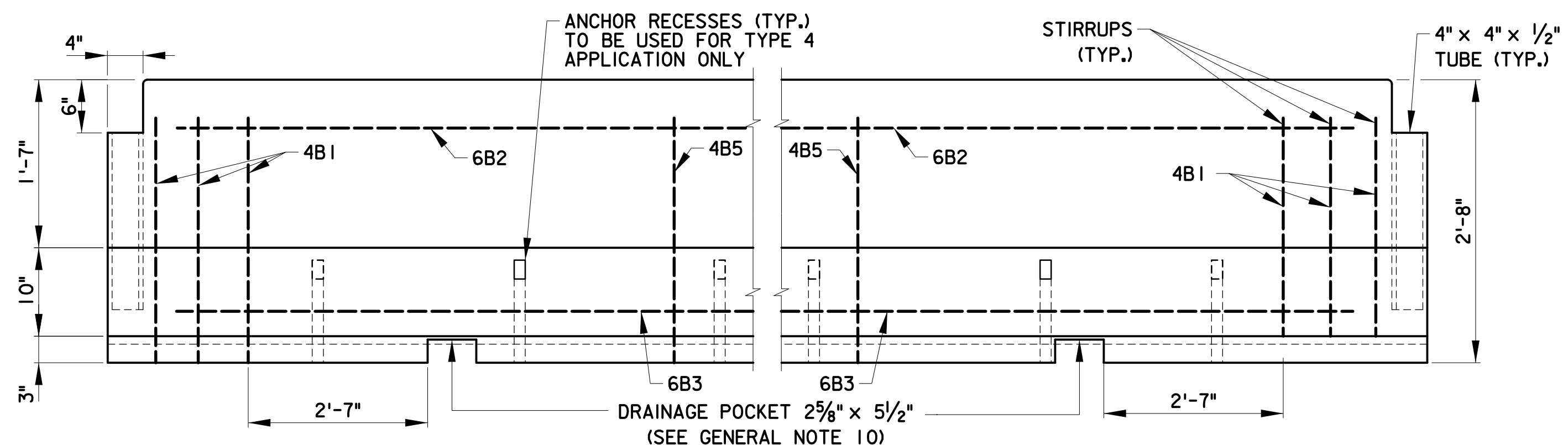
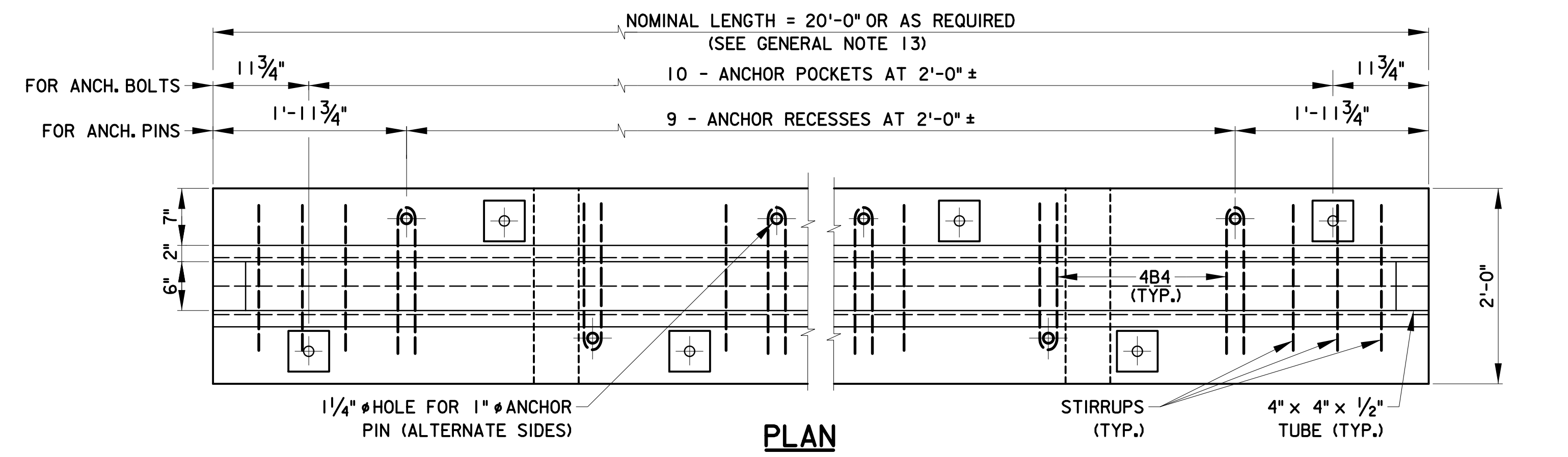


PLAN

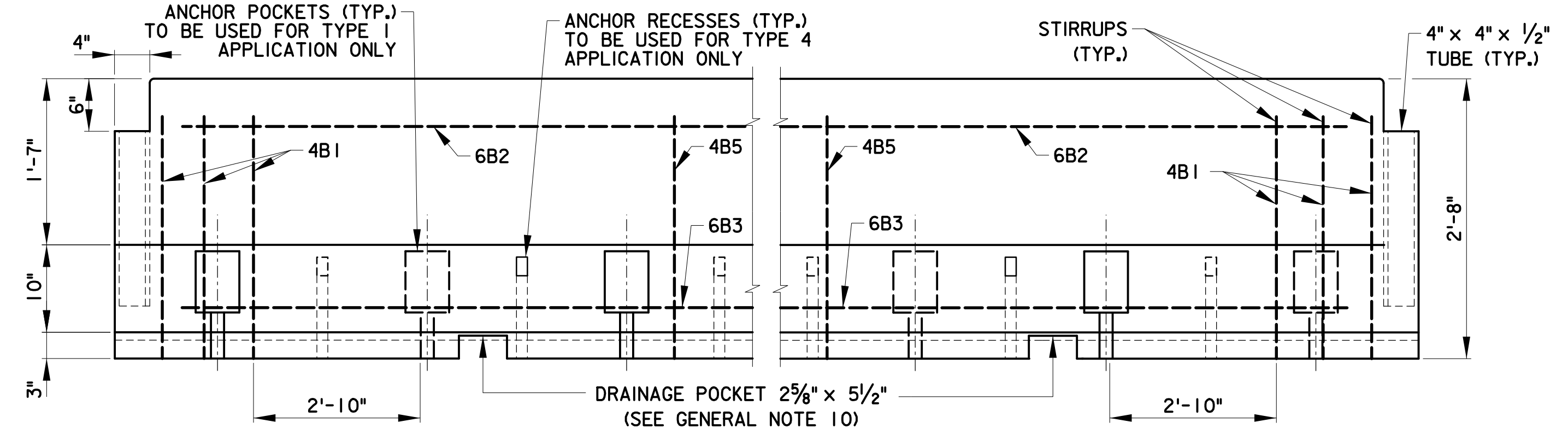


ELEVATION

PRECAST CONCRETE CONSTRUCTION BARRIER - ALTERNATE A
N.T.S.

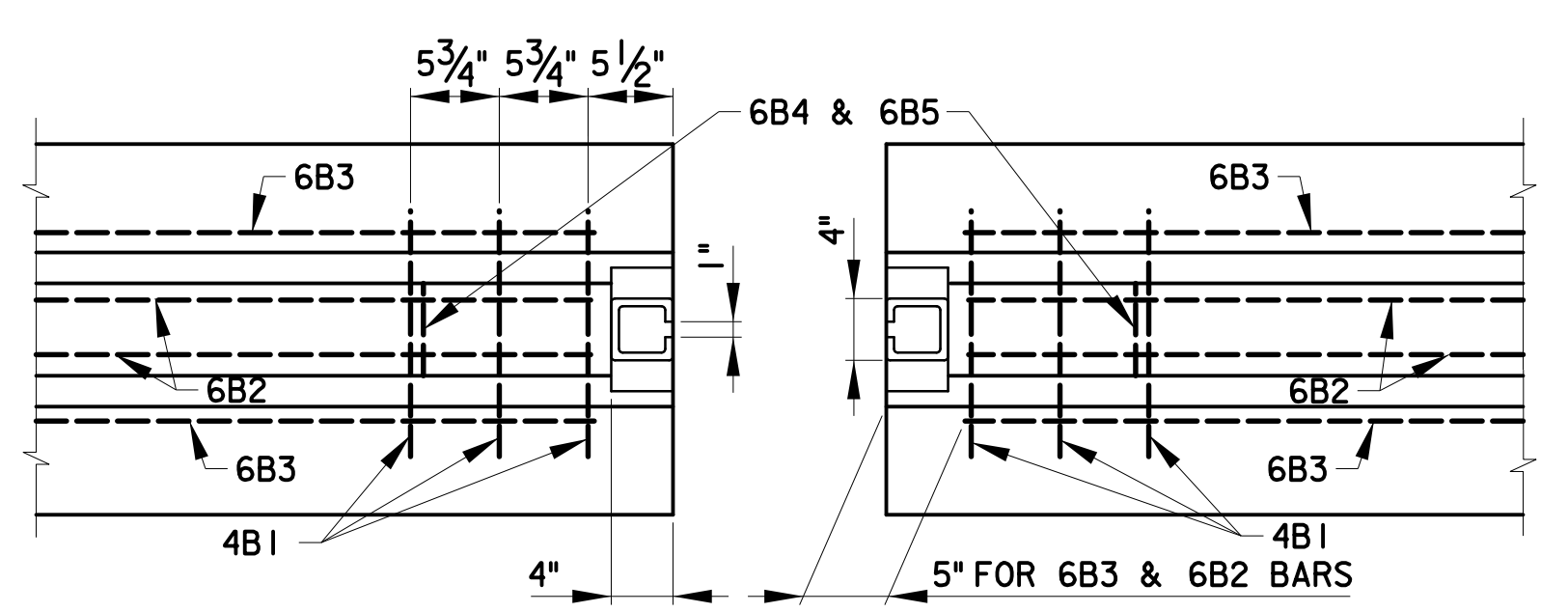


PLAN



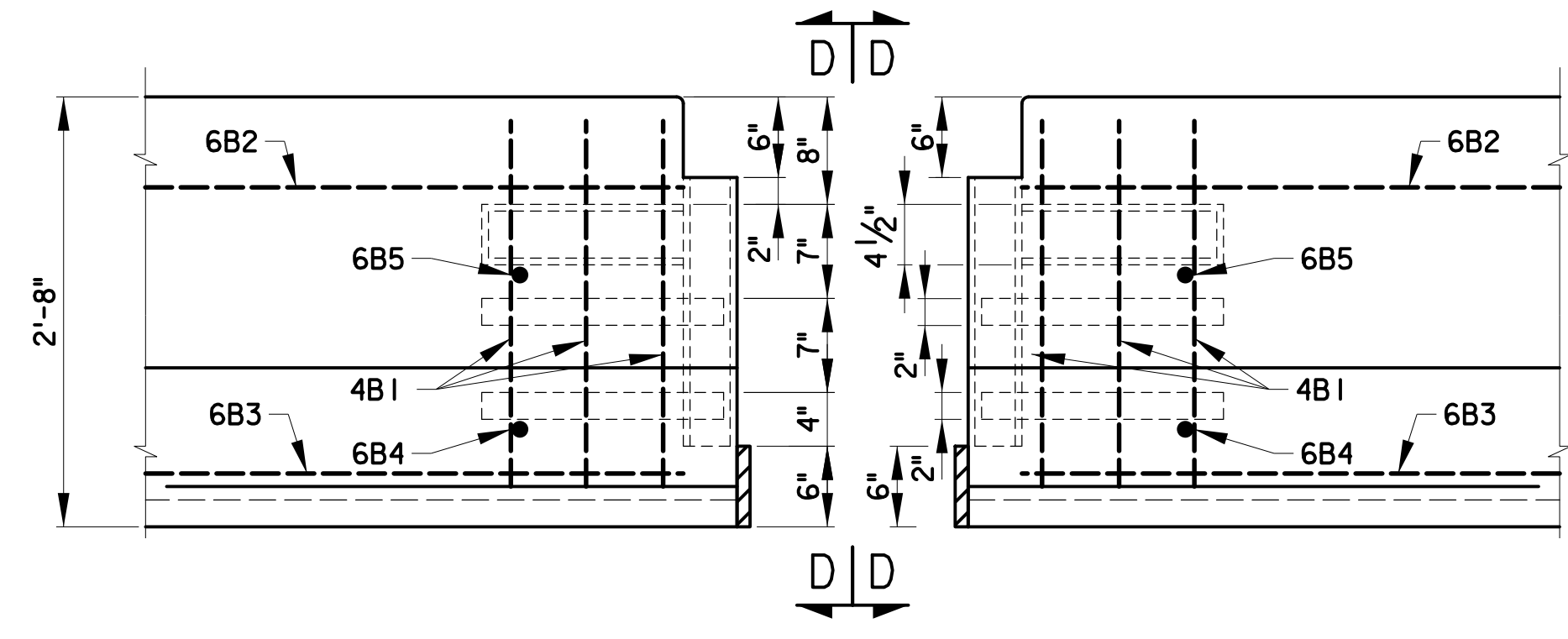
ELEVATION

PRECAST CONCRETE CONSTRUCTION BARRIER - ALTERNATE B
N.T.S.



PLAN

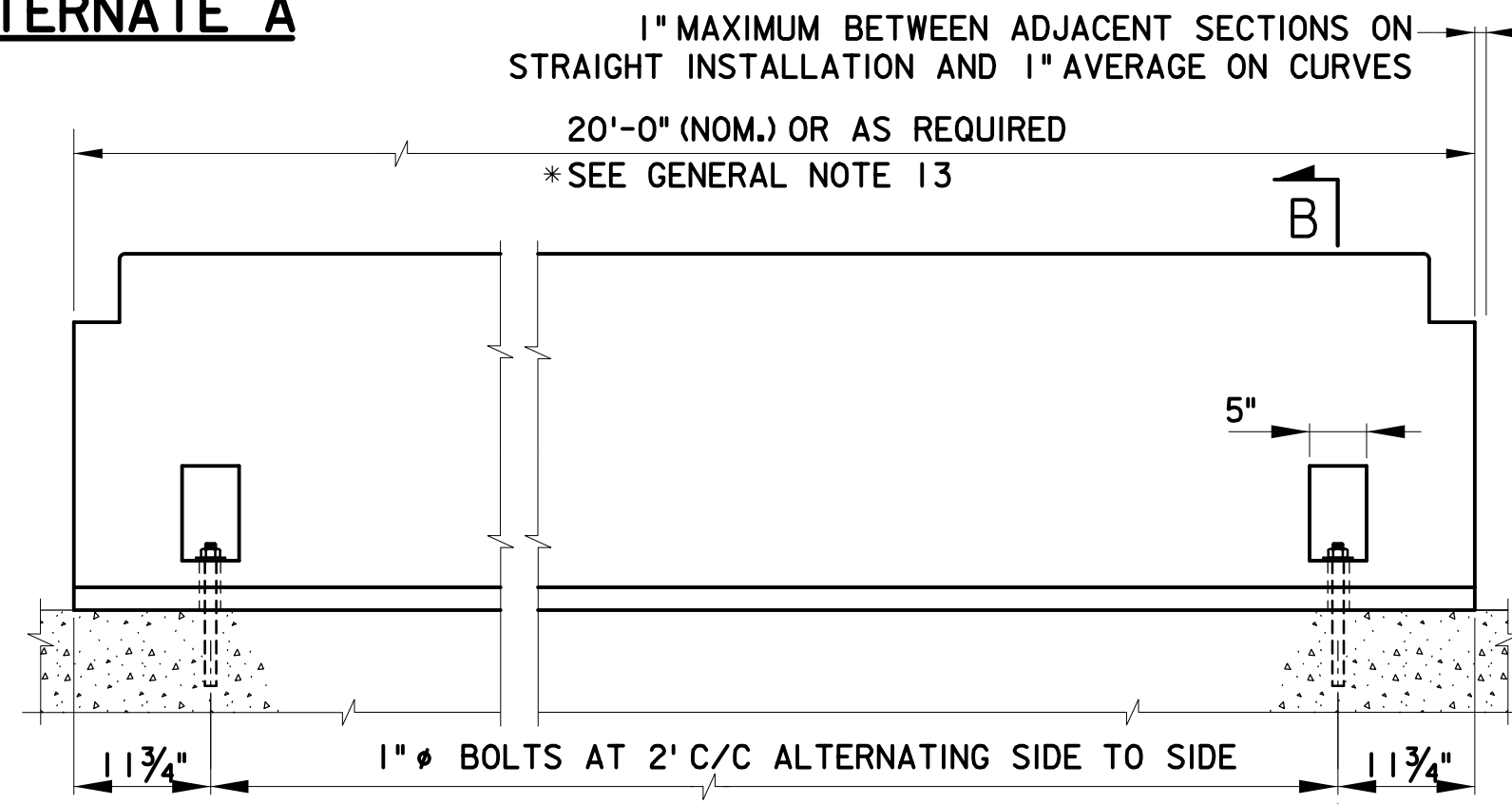
NOTE: ANCHOR RECESS/POCKET NOT SHOWN FOR CLARITY.



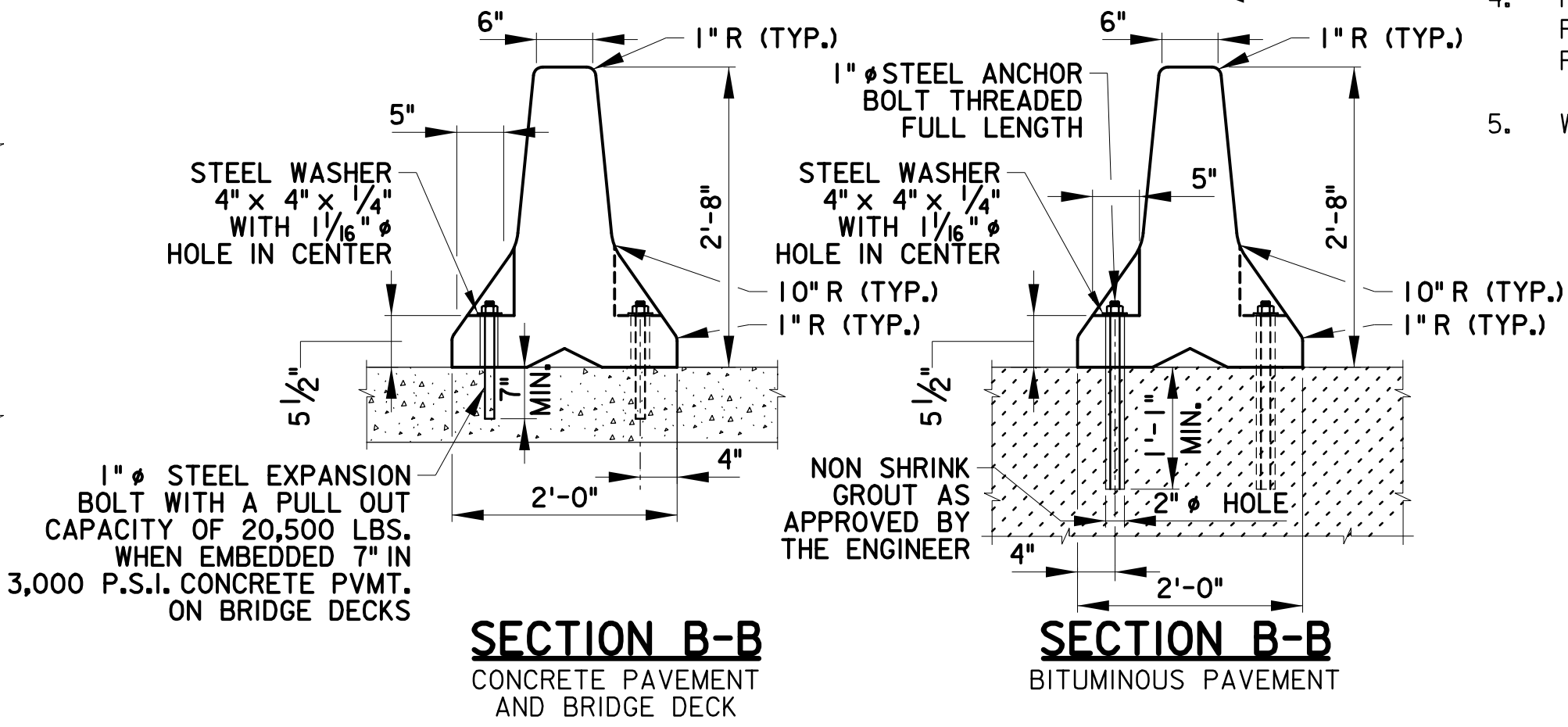
ELEVATION

NOTE: FOR SECTION D-D, SEE STANDARD DRAWING TP-22.

PRECAST CONCRETE CONSTRUCTION BARRIER AT JOINT
N.T.S.



ELEVATION



SECTION B-B
CONCRETE PAVEMENT
AND BRIDGE DECK

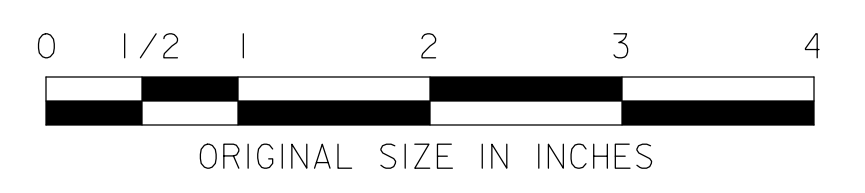
SECTION B-B
BITUMINOUS PAVEMENT

**ANCHORAGE DETAILS FOR
ALTERNATE DESIGN B BARRIER (JOINT CLASS D)**
N.T.S.

GENERAL NOTES:

1. FOR PRECAST CONCRETE CONSTRUCTION BARRIER (PCCB) ALTERNATE DESIGN B, JOINT CLASS D, BOLTS SHALL BE REQUIRED IN EVERY ANCHOR POCKET HOLE.
2. NUTS SHALL CONFORM TO ASTM A563 AND WASHERS SHALL CONFORM TO ASTM F436.
3. HOLES SHALL BE BLOWN CLEAN OF DEBRIS PRIOR TO THE PLACEMENT OF BOLTS.
4. REMOVABLE ADHESIVE ANCHORS SHALL MEET THE REQUIREMENTS OF PARAGRAPH 909.02 (F). HOLE DIAMETER PER MANUFACTURER'S RECOMMENDATION.
5. WORK THIS DRAWING WITH STANDARD DRAWINGS TP-22 AND TP-23A.

MASH TL-3



NEW JERSEY TURNPIKE AUTHORITY
**NEW JERSEY TURNPIKE
 GARDEN STATE PARKWAY**
 STANDARD DRAWINGS

PRECAST CONCRETE
 CONSTRUCTION BARRIER - 2

OFFICE OF THE CHIEF ENGINEER
 NEW JERSEY TURNPIKE AUTHORITY
 WOODBRIDGE, NEW JERSEY

STANDARD DRAWING
TP-23

REV.	DESCRIPTION	DATE
0	REISSUED DRAWING	09/23