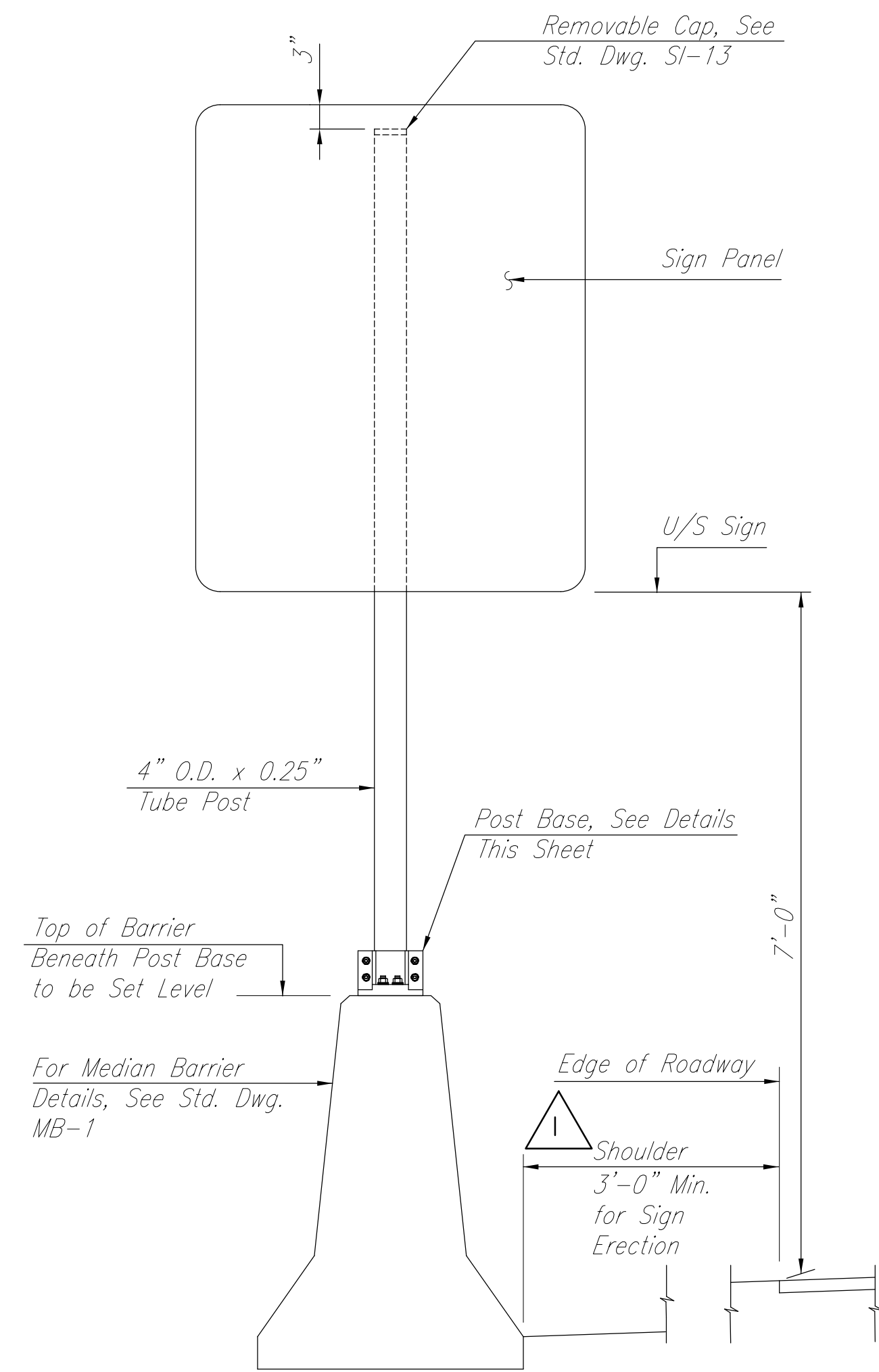
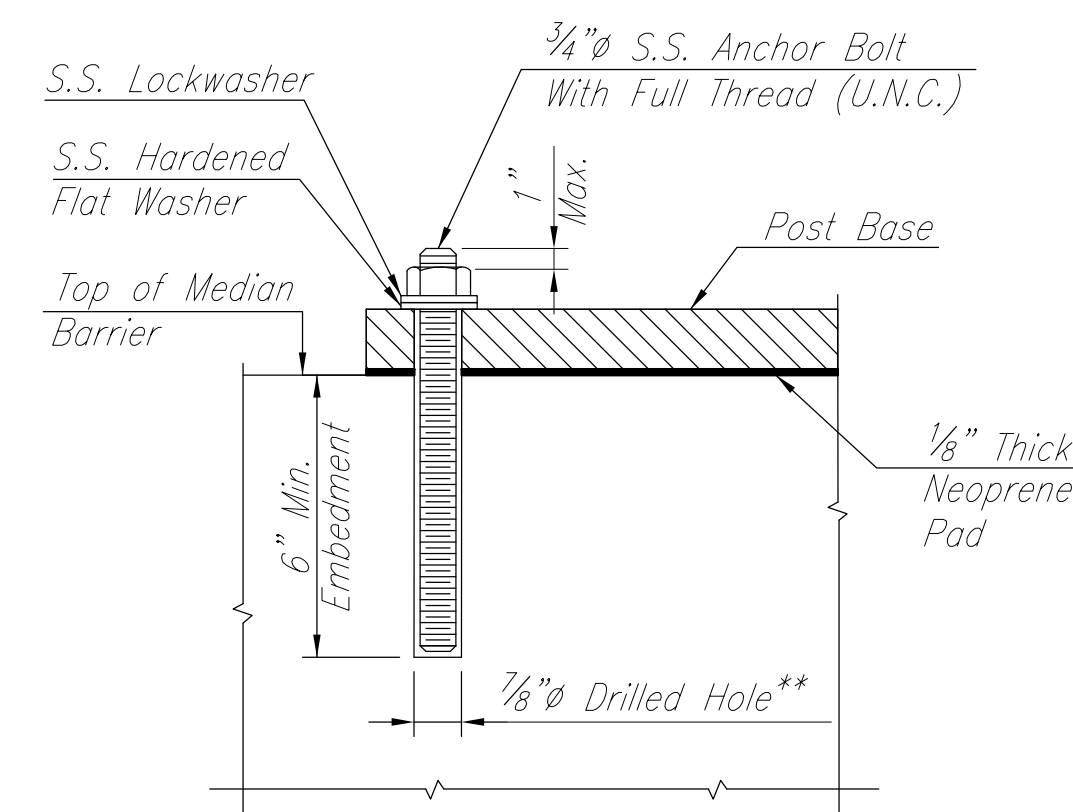


DUAL SIGN ERECTION



SINGLE SIGN ERECTION

ELEVATIONS
3/4" = 1'-0"



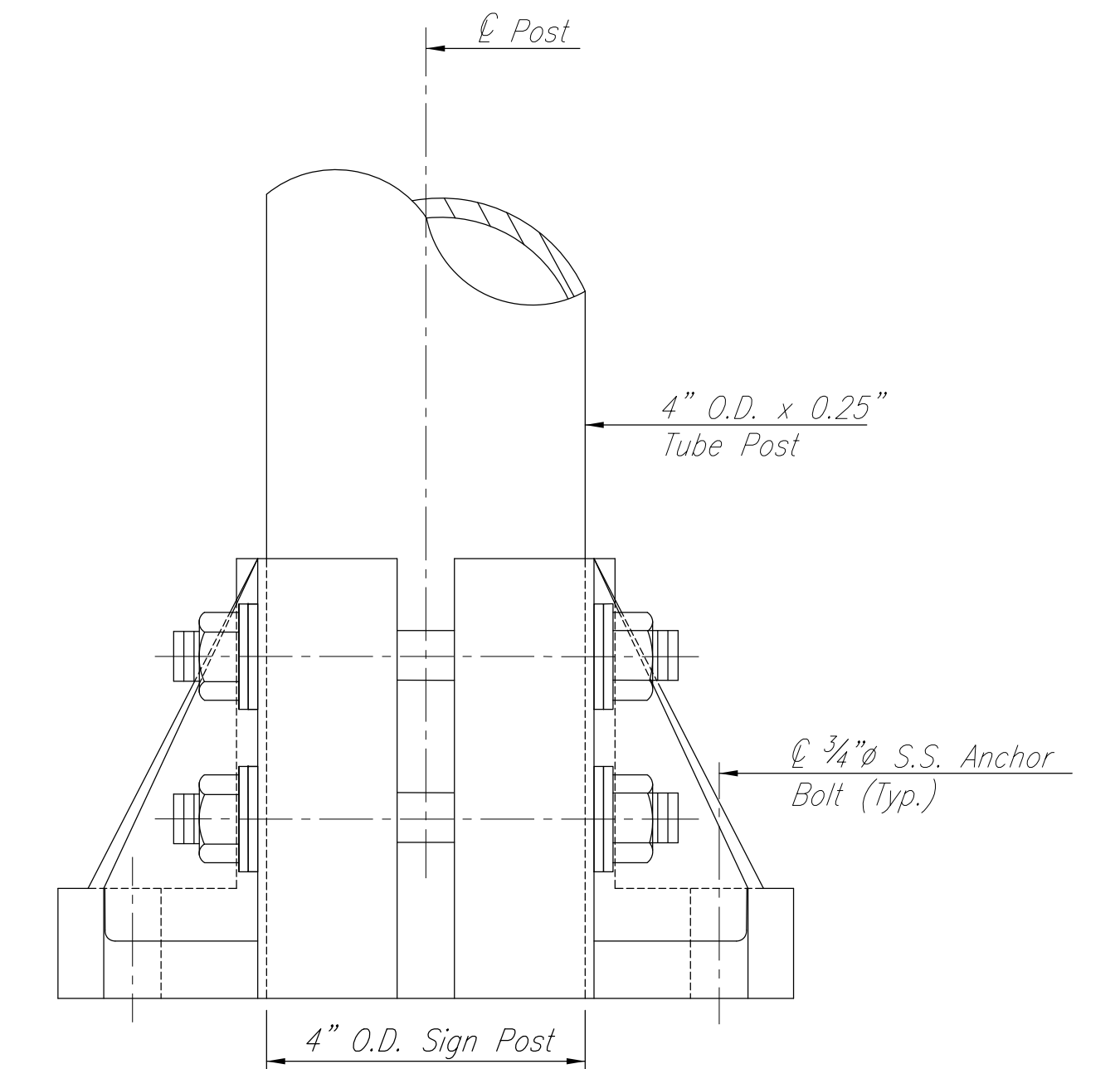
ANCHOR BOLT DETAIL
3" = 1'-0"

** 3/4" anchor bolts shall be secured in place using an approved high strength polyester resin anchor system, installed in accordance with manufacturer recommendations. The manufacturer shall provide independently verified data proving that the system is capable of developing yield strength of the anchor bolt.

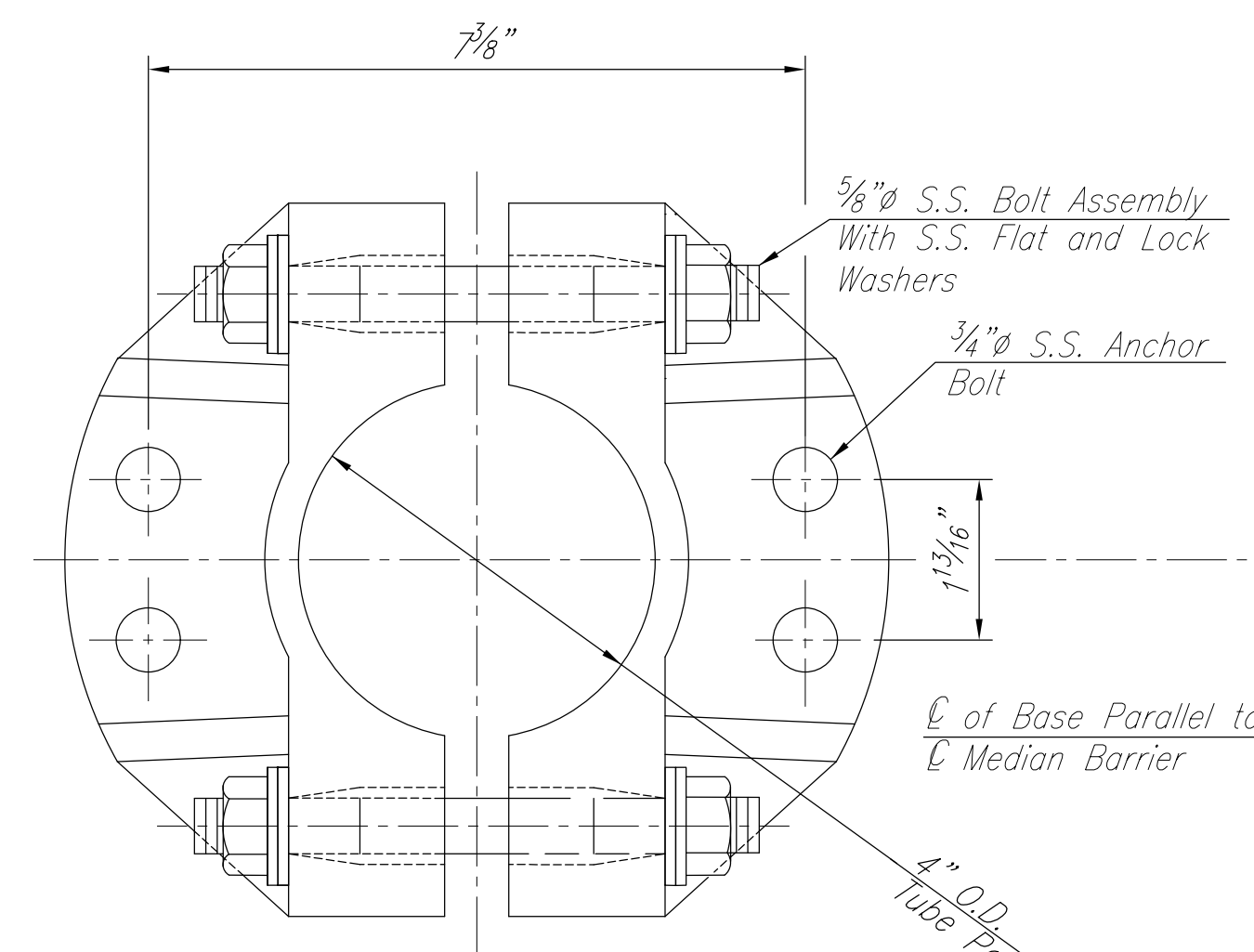
10% of the anchors installed (a minimum of 1 anchor per Contract), as selected by the Engineer shall be proof-loaded to 11,000 Lbs.. Measurement shall be provided by either of the following:

- 1.) Torque testing on calibrated wrenches or,
- 2.) Using load indicator washer

Failure of the test anchors to achieve proofload shall be cause to require the Contractor to install an alternate system, acceptable to the Engineer.

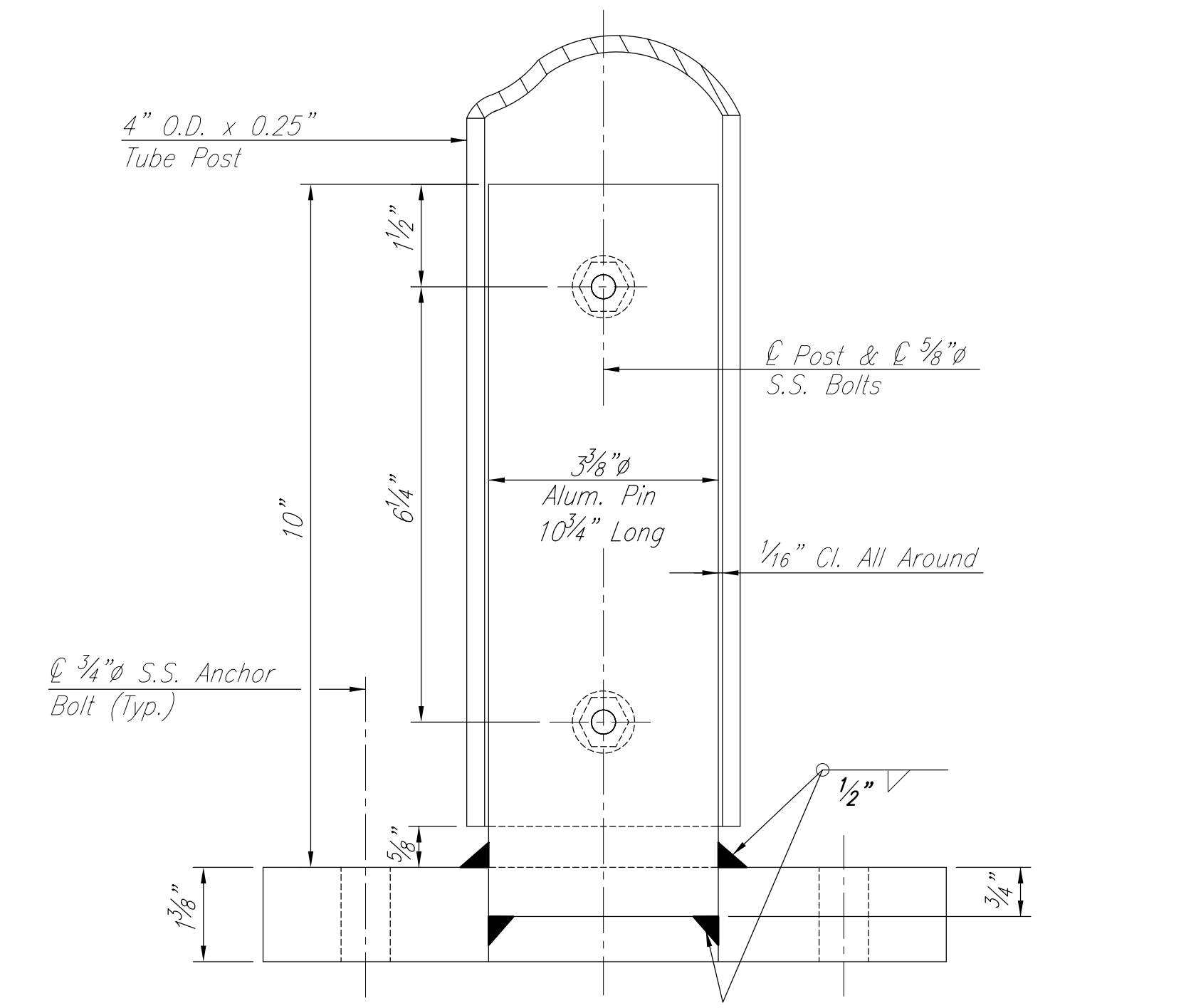


ELEVATION

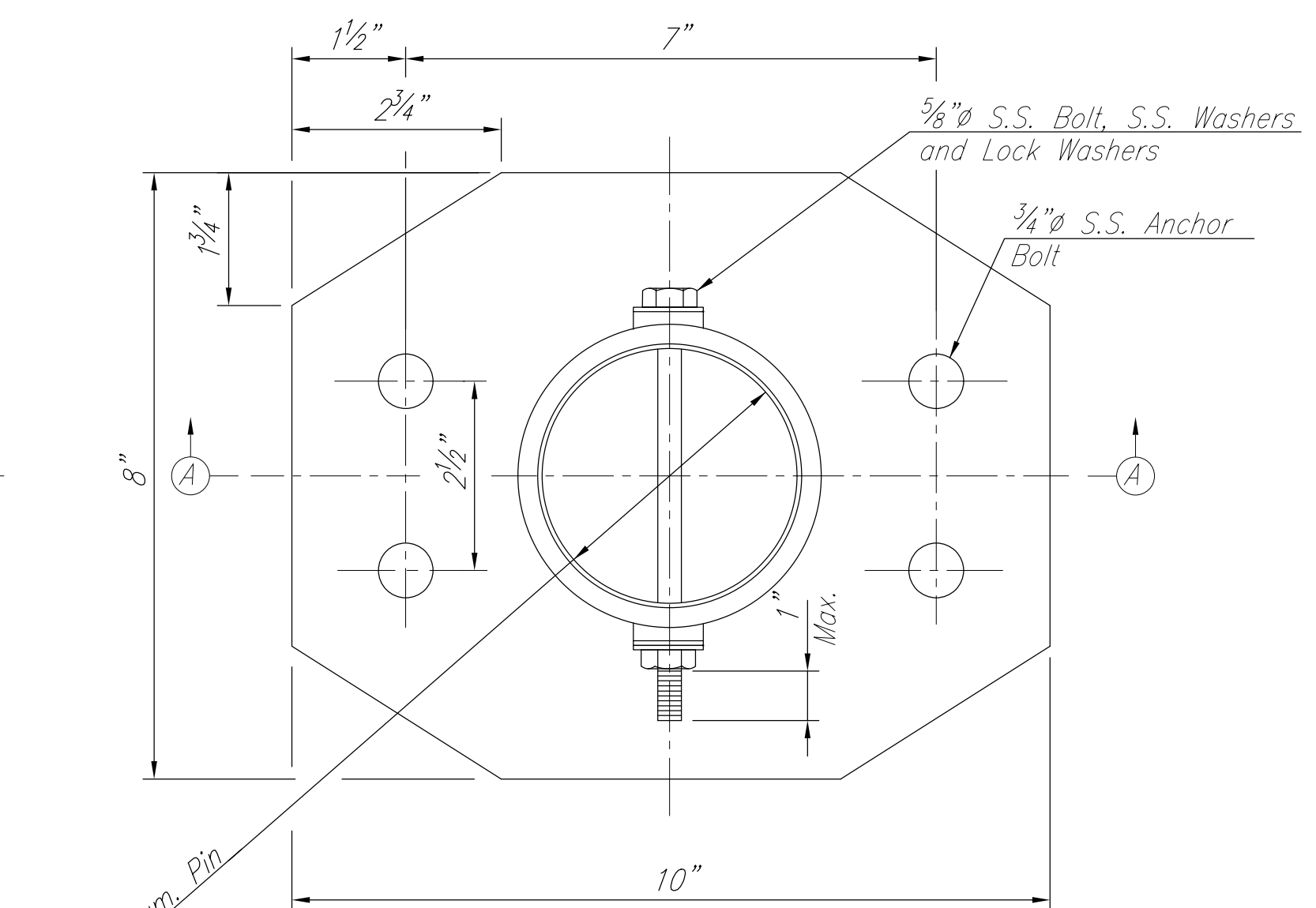


PLAN

CAST BASE
Cast Alum. Alloy to be 356-T6



SECTION A-A



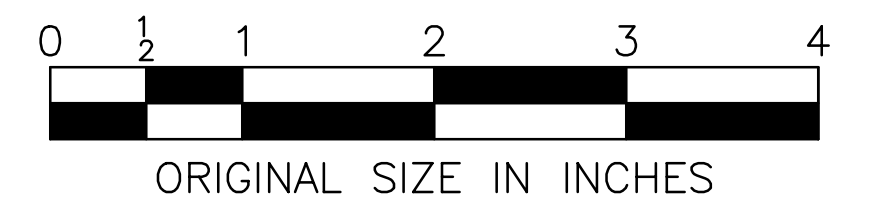
PLAN

FABRICATED BASE

POST AND BASE DETAILS
Half Scale

NOTES:

1. Sign support structures shall conform to Section 406.
2. Contractor may elect to furnish either cast or fabricated bases, however, within a Contract only one type shall be used.
3. All material to be Aluminum Alloy 6061-T6 unless otherwise noted.
4. S.S. denotes Stainless Steel.
5. For Sign Panel to Post Attachment Details, see Standard Drawing SI-13.
6. Max. total sign area shall be 24 sq. ft. per location.
7. Max. sign panel width shall be 36 inches, centered on the tube post.



**NEW JERSEY TURNPIKE AUTHORITY
NEW JERSEY TURNPIKE**

**CONCRETE MEDIAN BARRIER
MOUNTED SIGN DETAILS**

OFFICE OF THE CHIEF ENGINEER
WOODBRIIDGE, NEW JERSEY

**2004 STANDARD
DRAWING SI-27**

APP. NO.	DATE	REVISION
1	08/23	ADDED NOTE NO. 7 AND MIN. SHOULDER DIMENSION
0	04/05	REISSUED; CONFORMS TO 2004 SPECIFICATIONS

CONTRACT NO.

SHEET NO.

OF