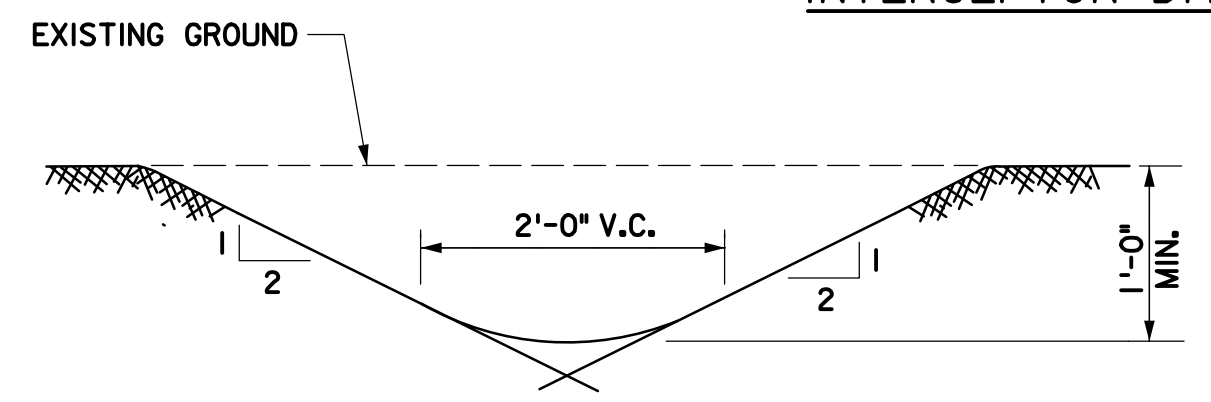
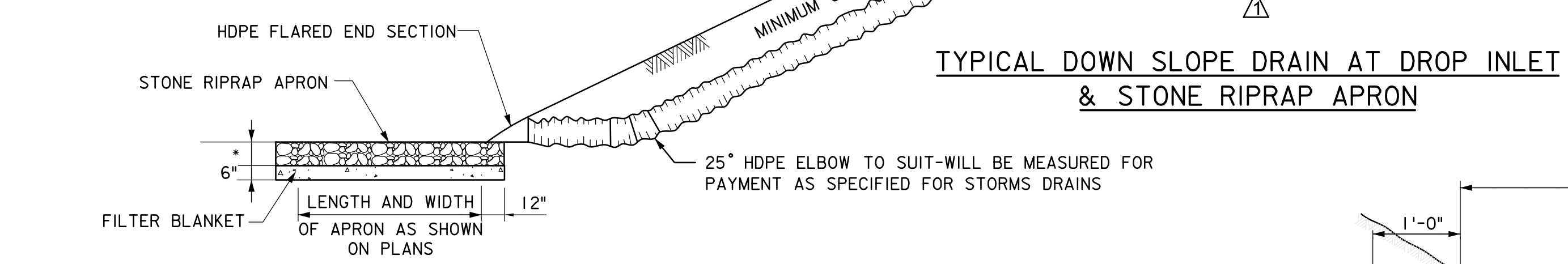


**TYPICAL DOWN SLOPE DRAIN AT INTERCEPTOR DITCH & STONE RIPRAP APRON**

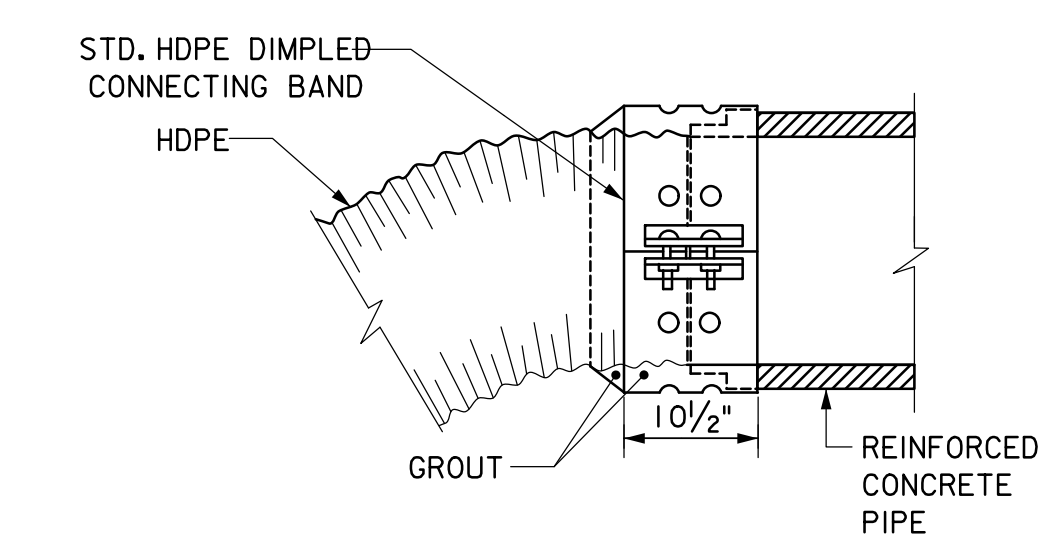


**TYPICAL SECTION - INTERCEPTOR DITCH**

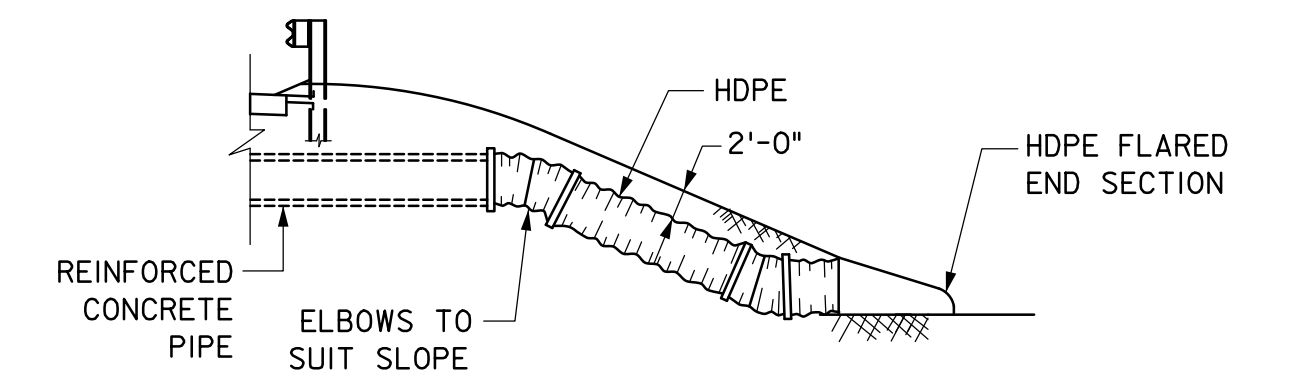


**TYPICAL DOWN SLOPE DRAIN AT DROP INLET & STONE RIPRAP APRON**

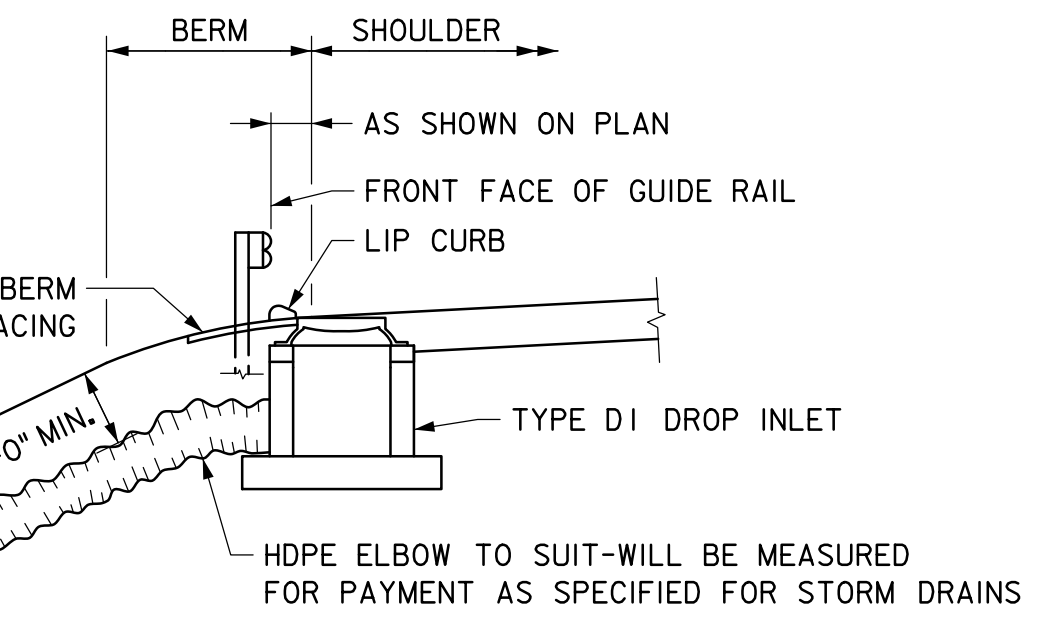
**NOTE:**  
IF CALLED FOR IN THE SUPPLEMENTAL SPECIFICATIONS, FILTER FABRIC IS TO BE USED IN LIEU OF FILTER BLANKET. FOR THICKNESS, GRADATION AND PAYMENT OF STONE RIPRAP APRON, SEE STD. DWG. DR-8.



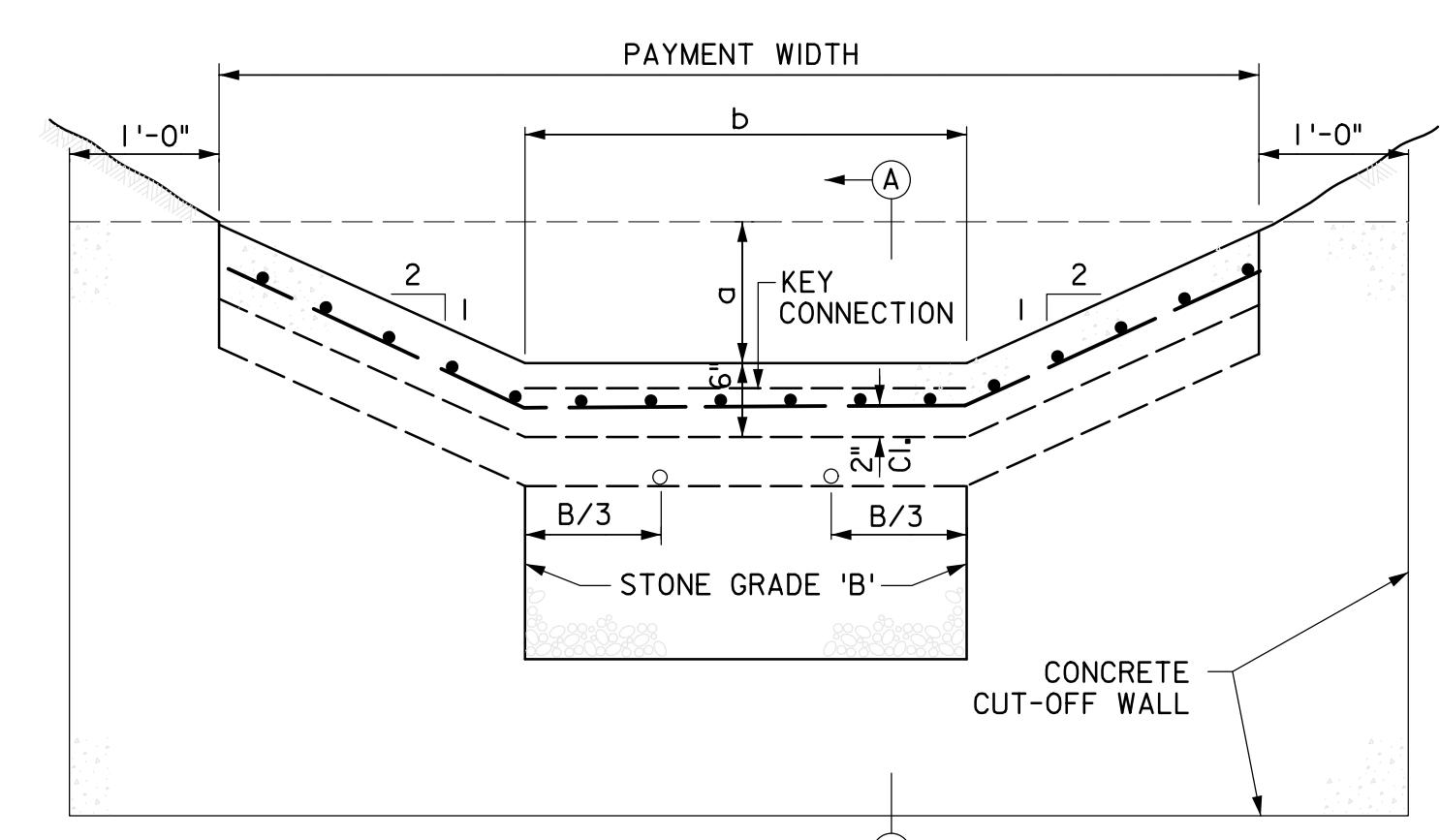
**TYPICAL CONNECTION OF HDPE OUTLET IN SLOPES**  
(FOR HDPE OUTLET DRAIN IN SLOPE, AND FOR SPLICING NEW PIPE ONTO EXISTING DRAINS)



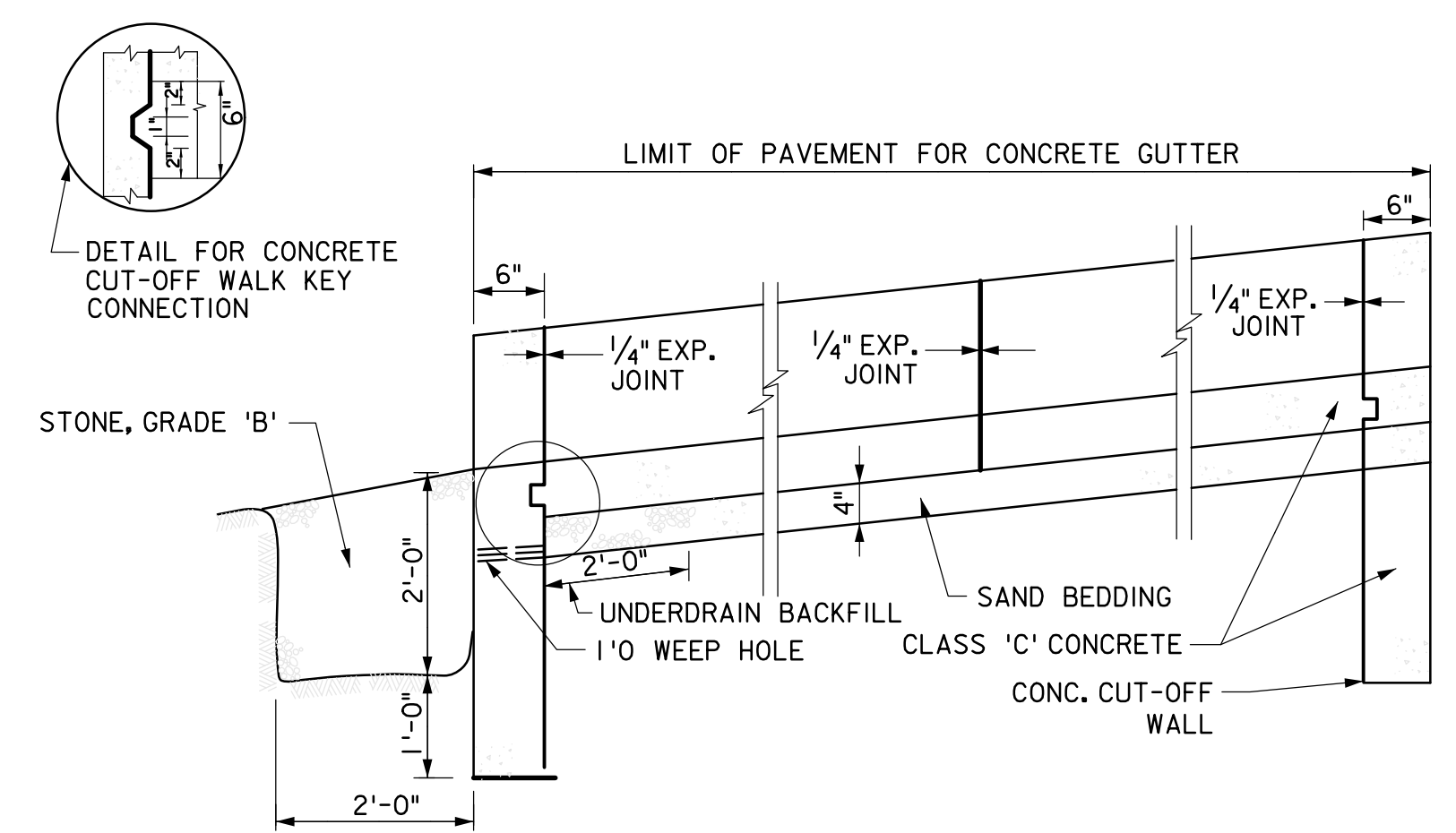
**TYPICAL HDPE OUTLET IN SLOPES**  
**NOTE:**  
SEE DETAIL FOR CONNECTION OF HDPE TO REINFORCED CONCRETE PIPE.



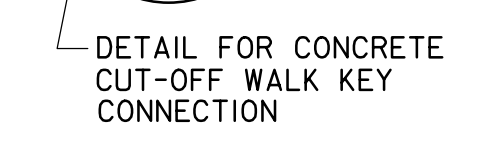
- NOTES:**
1. ALL REINFORCING TO BE WIRE MESH 6"x6", #10 X #10.
  2. FOR DETAILS OF HDPE FLARED END SECTION, SEE STD. DWG. DR-4.
  3. STONE RIPRAP APRONS TO BE FURNISHED ONLY WHERE INDICATED ON THE PLAN SHEETS.
  4. SEE STD. DWG. DR-1 FOR TYPE D1 DROP INLET DETAILS.
  5. SEE STD. DWG. CU-3 AND GR-9 FOR LIP CURB DETAILS AND BERM SURFACING LIMITS.



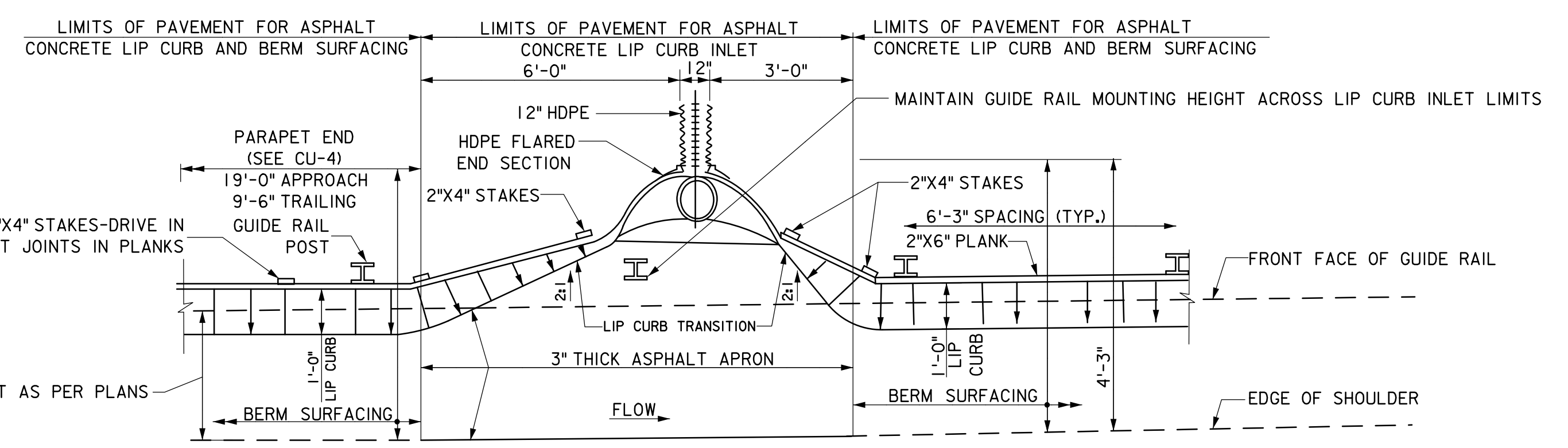
**ELEVATION**



**SECTION A-A**



**DETAIL FOR CONCRETE CUT-OFF WALK KEY CONNECTION**



**ASPHALT CONCRETE LIP CURB INLET**  
\*\*THIS DETAIL FOR REFERENCE ONLY\*\*

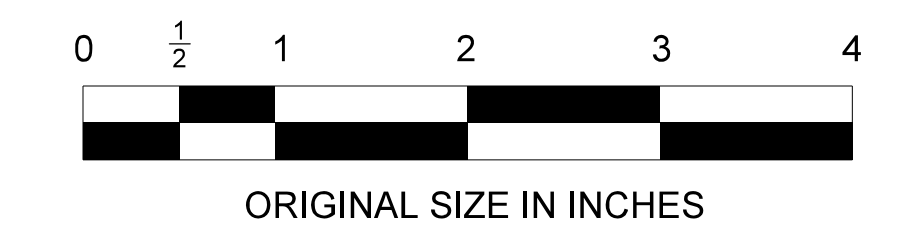
**THIS DETAIL MAY ONLY BE USED FOR REPAIR OF EXISTING AUTHORITY LIP CURB INLETS. NEW INSTALLATION OR COMPLETE REPLACEMENT SHALL BE PROHIBITED.**

- NOTES:**
1. FOR LIP CURB DETAIL, SEE STD. DWG. CU-3.
  2. FOR LIMIT OF BERM SURFACING, SEE STD. DWG. GR-9.

**CONCRETE GUTTER**

• FOR DIMENSIONS SEE CONSTRUCTION DETAILS

TYPE	DIMENSIONS	
	a	b
A	6"	1'-10"
B	1'-0"	2'-0"
C	1'-0"	2'-6"
D	1'-0"	3'-0"
E	1'-0"	3'-6"
F	1'-0"	4'-0"
G, etc.	•	•



**ORIGINAL SIZE IN INCHES**

NEW JERSEY TURNPIKE AUTHORITY

**CONCRETE GUTTER AND SLOPE DRAIN DETAILS**

OFFICE OF THE CHIEF ENGINEER

2009 STANDARD DRAWING

DR-5

App.	No.	DATE	REVISION
	1	01/23	REPLACED LIP CURB INLET WITH TYPE D1 DROP INLET
	0	04/09	ORIGINAL DRAWING

CONTRACT NO.

SHEET NO.

OF