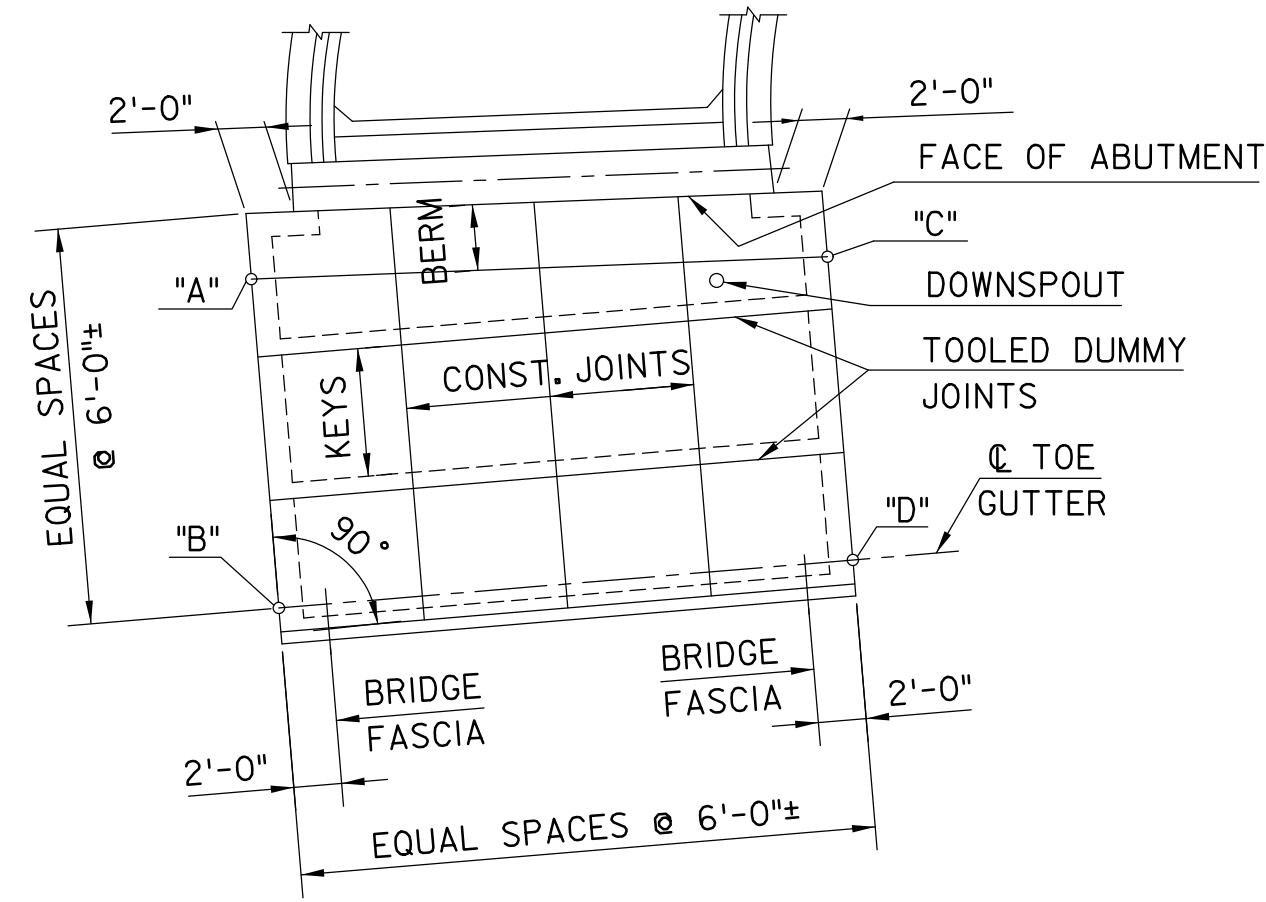
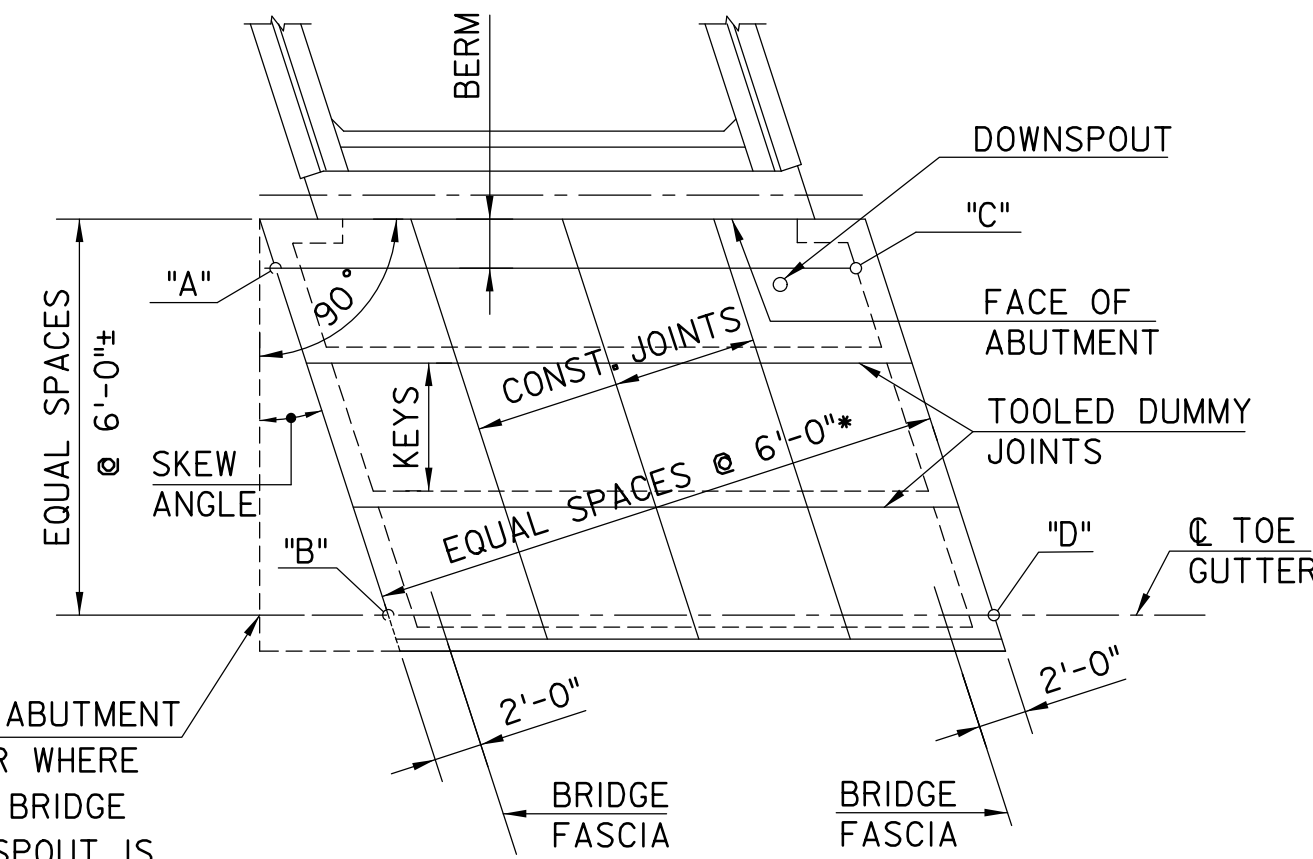


NO SKEW



RADIAL

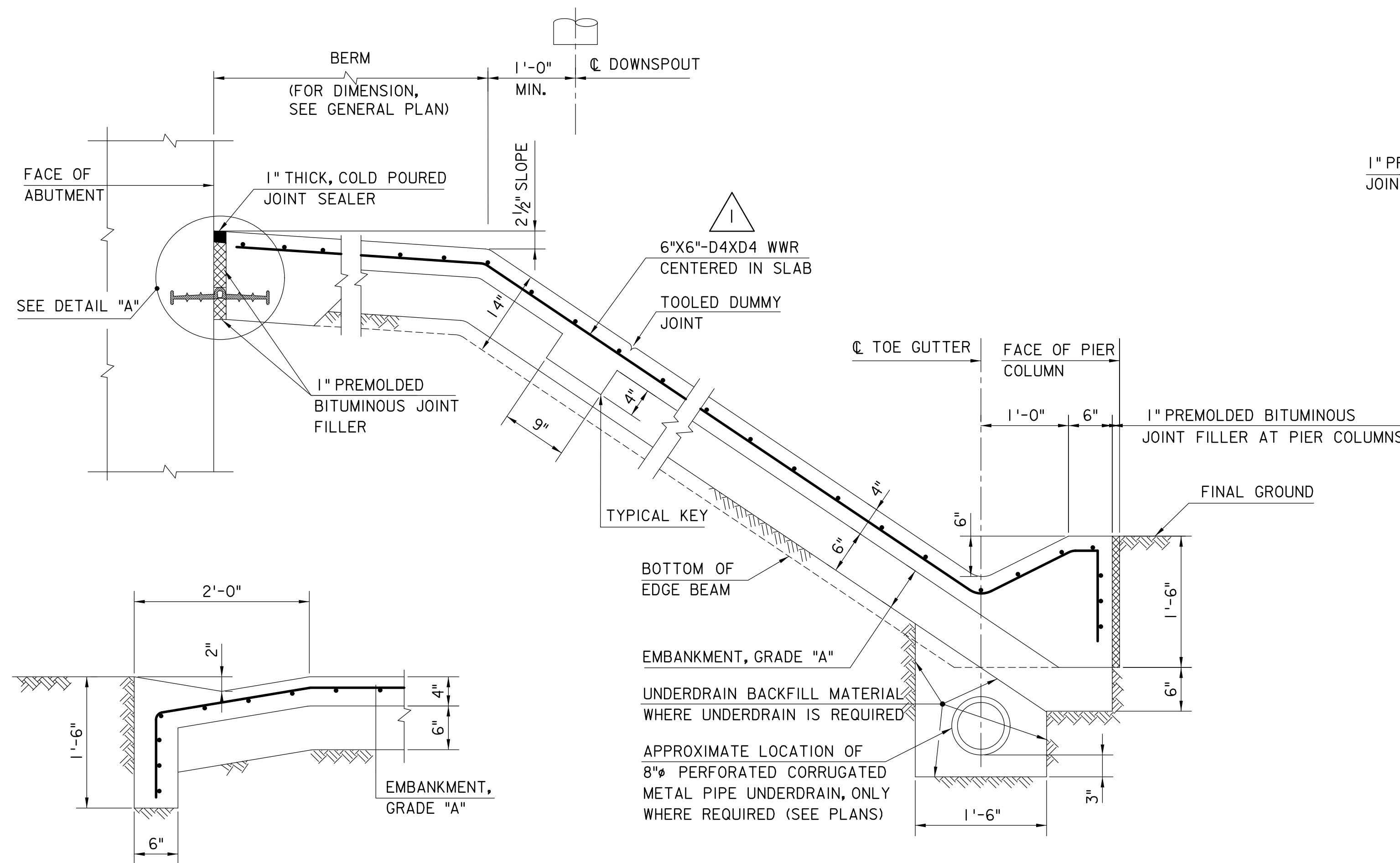


SKEWED

WHEN SKEW AT ABUTMENT EXCEEDS 20° OR WHERE REQUIRED WHEN BRIDGE DRAINAGE DOWNSPOUT IS LOCATED ON THIS SIDE OF STRUCTURE, SLOPE PROTECTION SHALL EXTEND TO THIS LINE. GUTTERS AND CONSTRUCTION JOINTS SHALL BE PARALLEL TO THIS EDGE.

TYPICAL SLOPE PLANS

1/8" = 1'-0"

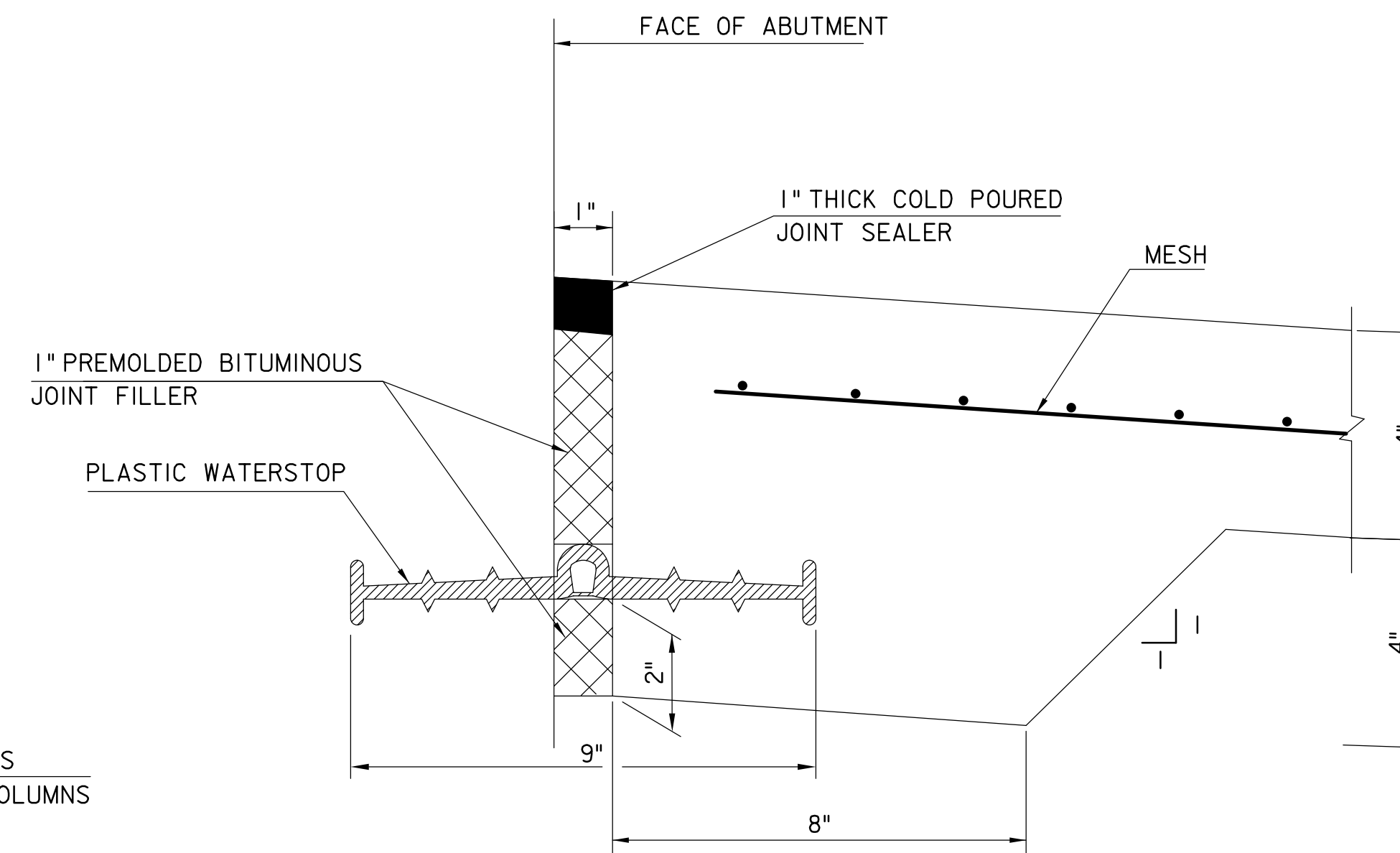


TYPICAL EDGE SECTION BENEATH FASCIAS

1" = 1'-0"

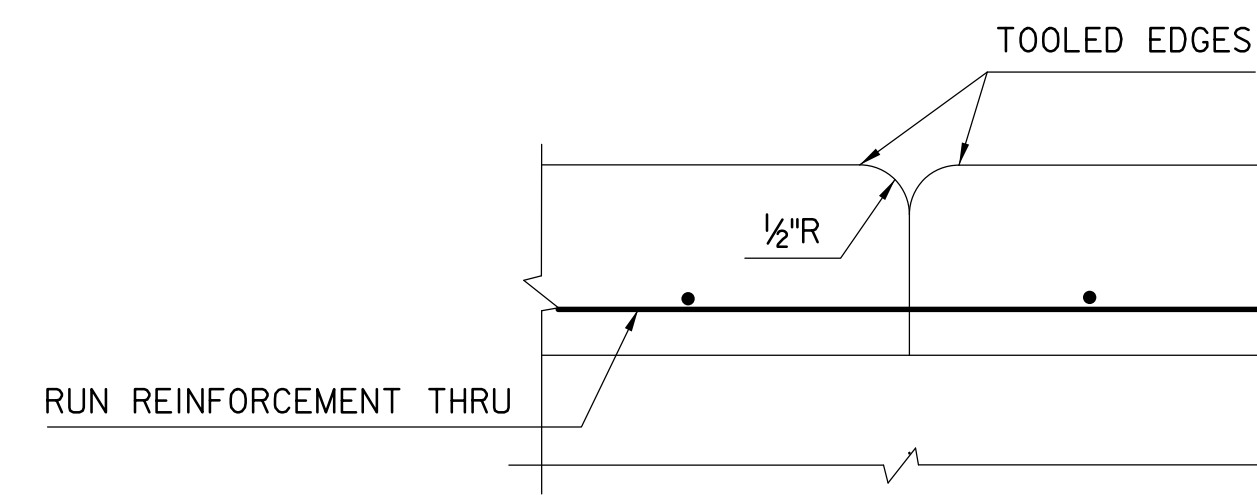
TYPICAL SECTION

1" = 1'-0"



DETAIL A

3" = 1'-0"

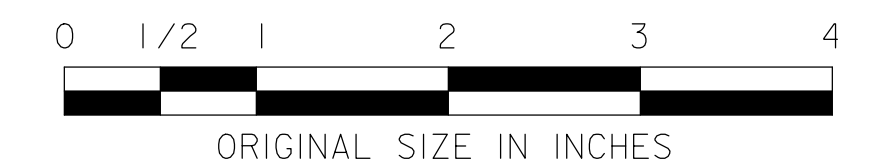


CONSTRUCTION JOINT DETAIL

3" = 1'-0"

NOTES:

1. CONCRETE SLOPE PROTECTION SHALL CONFORM TO SECTION 413.
2. ALL CONCRETE SHALL BE PLACED IN ALTERNATE STRIPS FROM BOTTOM OF SLOPE TOWARDS ABUTMENT.
3. ALL REINFORCEMENT SHALL BE CONTINUOUS THRU ALL JOINTS. LAPS OF 12" SHALL BE USED WHEN REQUIRED FOR CONTINUITY.
4. FOR ELEVATIONS AT POINTS "A", "B", "C" AND "D", SEE GENERAL PLAN AND ELEVATION SHEET.
5. WHERE BRIDGE DRAINAGE IS CARRIED BY DOWNSPOUTS AT PIERS, NO SLOPE GUTTERS ARE REQUIRED.
6. CONCRETE TO BE CLASS C, AIR ENTRAINED.



NEW JERSEY TURNPIKE AUTHORITY
**NEW JERSEY TURNPIKE
GARDEN STATE PARKWAY**

STANDARD DRAWINGS

CONCRETE SLOPE PROTECTION

OFFICE OF THE CHIEF ENGINEER
NEW JERSEY TURNPIKE AUTHORITY
WOODBIDGE, NEW JERSEY

STANDARD DRAWING

BR-5

REV.	DESCRIPTION	DATE
1	REVISED; CONFORMS TO 2019 DESIGN MANUAL AND MINOR REVISIONS	10/22
0	REISSUED DRAWING	09/10