

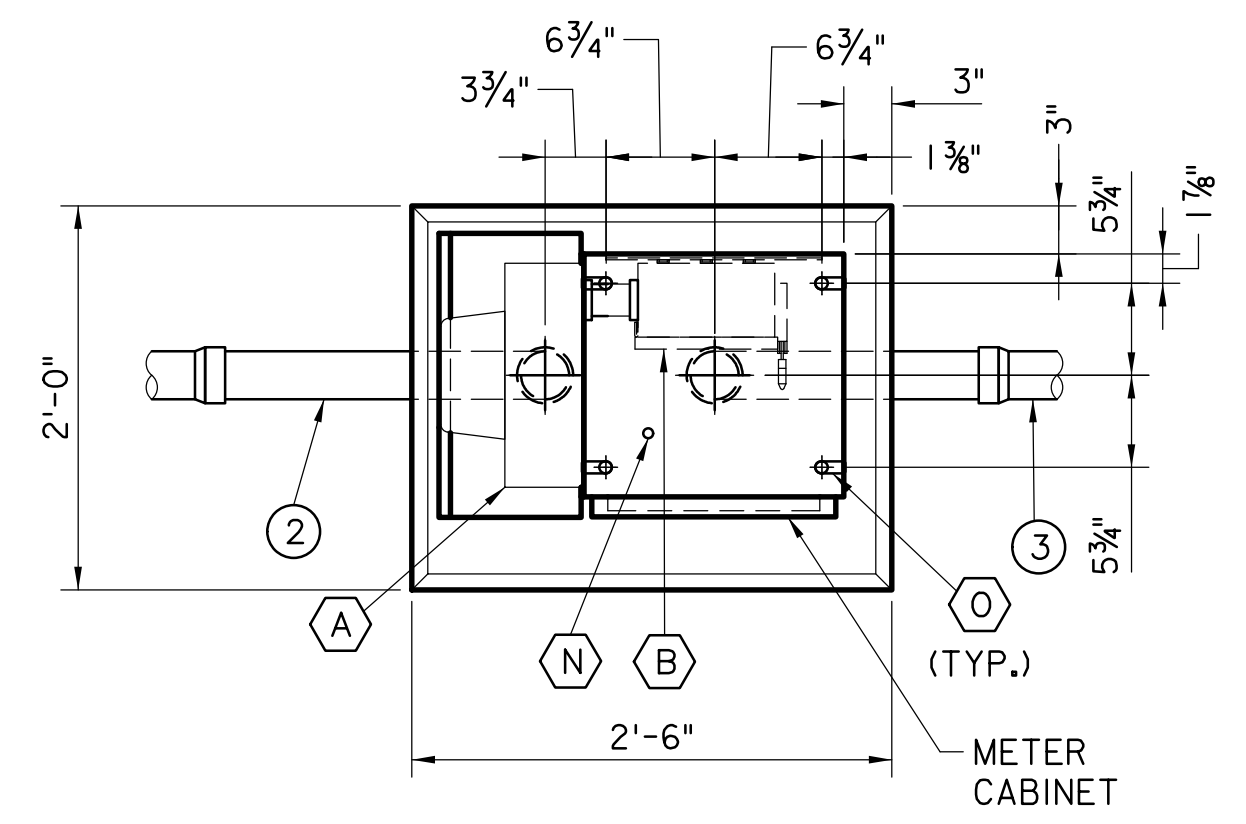
ELEVATION
SCALE: 1"=1'-0"

METER DISCONNECT. DIMENSIONS ARE FOR 200A SWITCH ONLY (SEE NOTE 16 ON E-32)

RODENT BLOCKING MATERIAL (TYP.)

FOUNDATION, TYPE MC (CLASS B CONCRETE)
CONDUIT COUPLING FLUSH WITH TOP OF FOUNDATION

NOTE:
SEE STD. DWG. E-16 FOR NAMEPLATE DETAILS. NAMEPLATE MOUNTED ON THE CABINET DOOR SHALL HAVE INFORMATION AS SHOWN BELOW:
METER CABINET
480/240/208V, (1-PHASE OR 3-PHASE)
NJ TURNPIKE/GSP
EMERGENCY CONTACT: TP OPERATIONS 800-352-4848
METER CABINET NAME: UTILITY BUILDING DESIGNATION (E.G. SAI1N) OR MILEPOST (E.G. MP112.3)



PLAN
SCALE: 1"=1'-0"

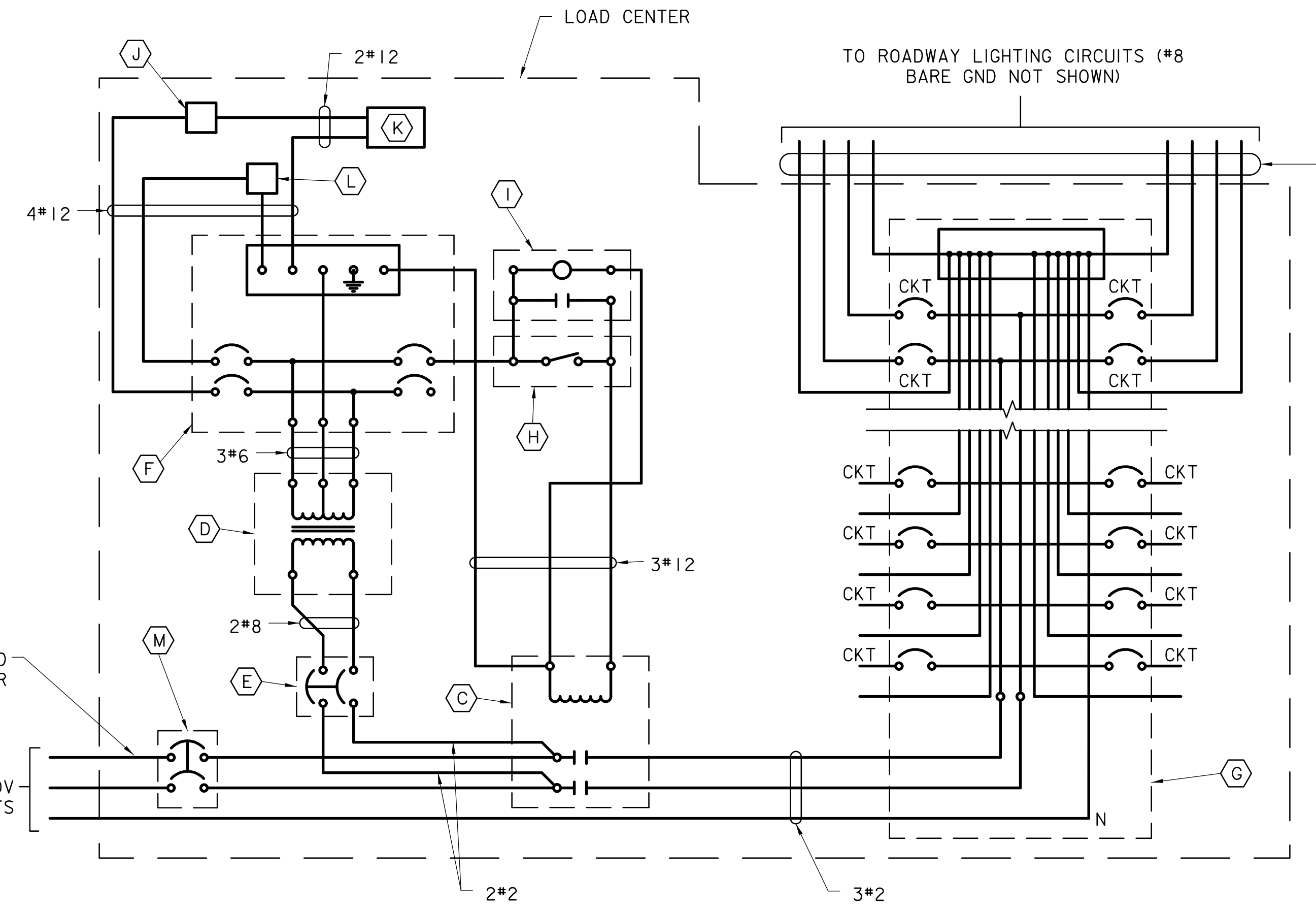
NJTA METER CABINET TYPE G AND FOUNDATION

NOTES

- SEE E-34 FOR LEGEND AND NOTES.
- REFER TO TYPE F LOAD CENTER WIRING DIAGRAM FOR 3-PHASE, 4-WIRE, 120/208V SYSTEM. DESIGNER TO MODIFY THE WIRING DIAGRAM AS REQUIRED.

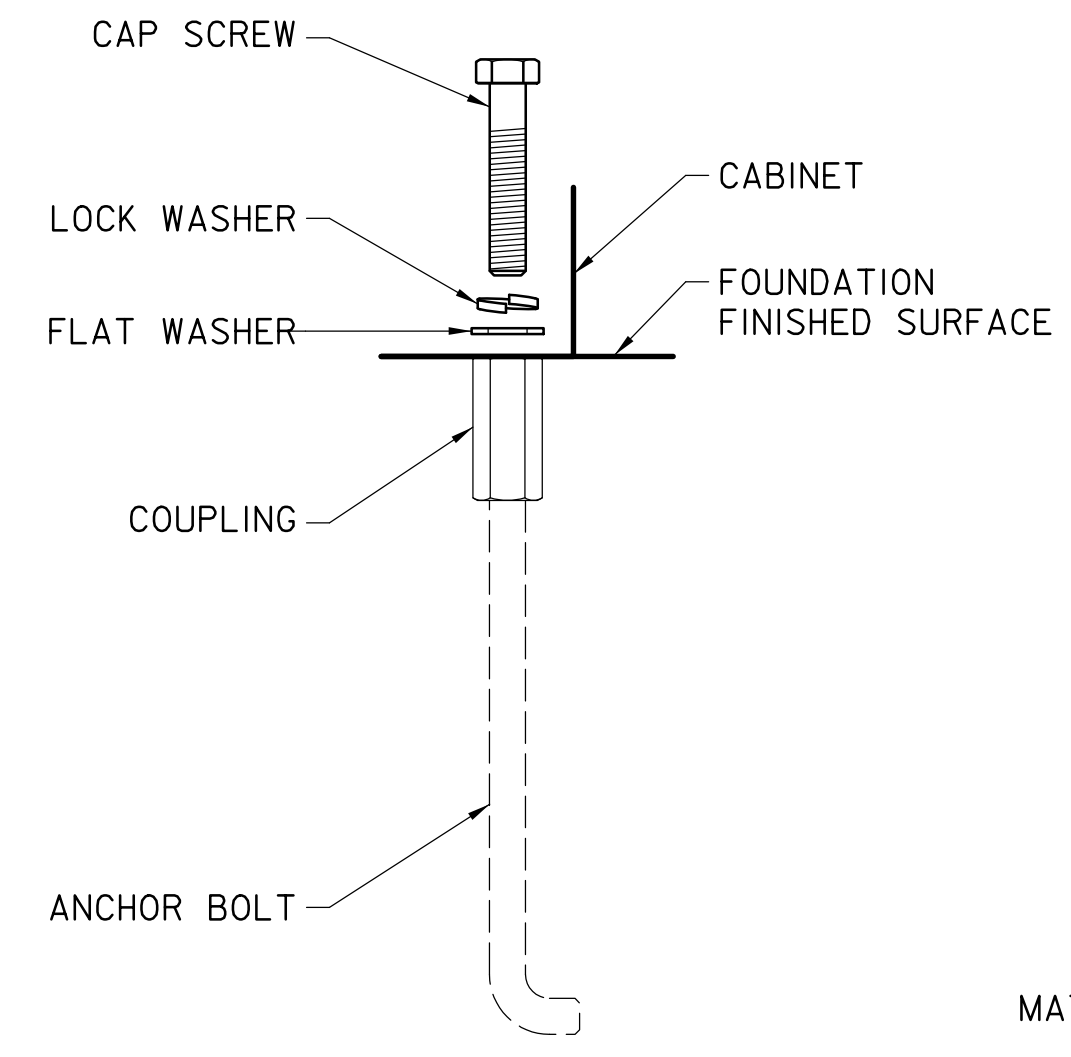
SURGE PROTECTION SHALL BE PROVIDED AHEAD OF THE MAIN BREAKER

1-PHASE, 3-WIRE 120/240V FROM MTS

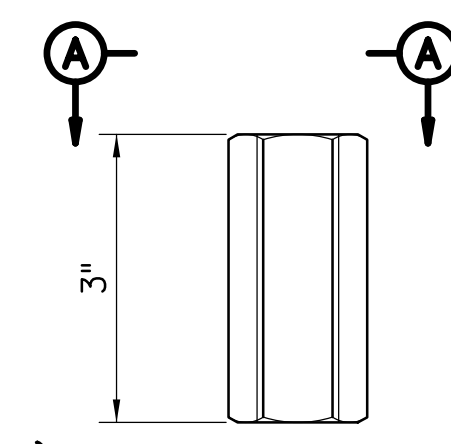


WIRING DIAGRAM
(N.T.S.)

WIRE SIZE AS PER THE PLANS. ONE NEUTRAL CONDUCTOR FOR EACH PHASE CONDUCTOR. (TYP.)



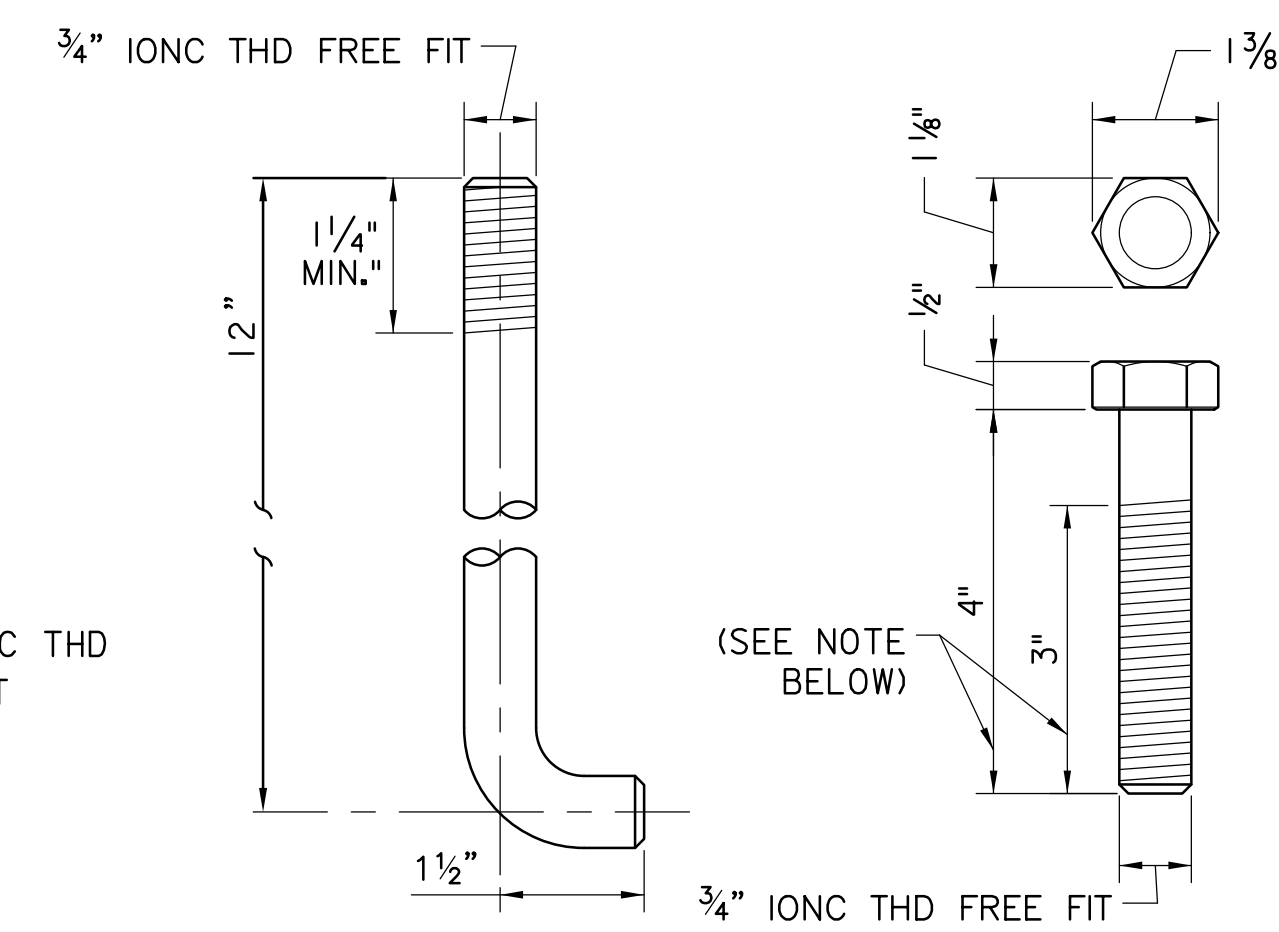
ANCHOR BOLT ASSEMBLY
SCALE: 3"= 1'-0"



SECTION A-A

COUPLING

MATERIAL - STEEL, GALVANIZED PER ASTM A-153

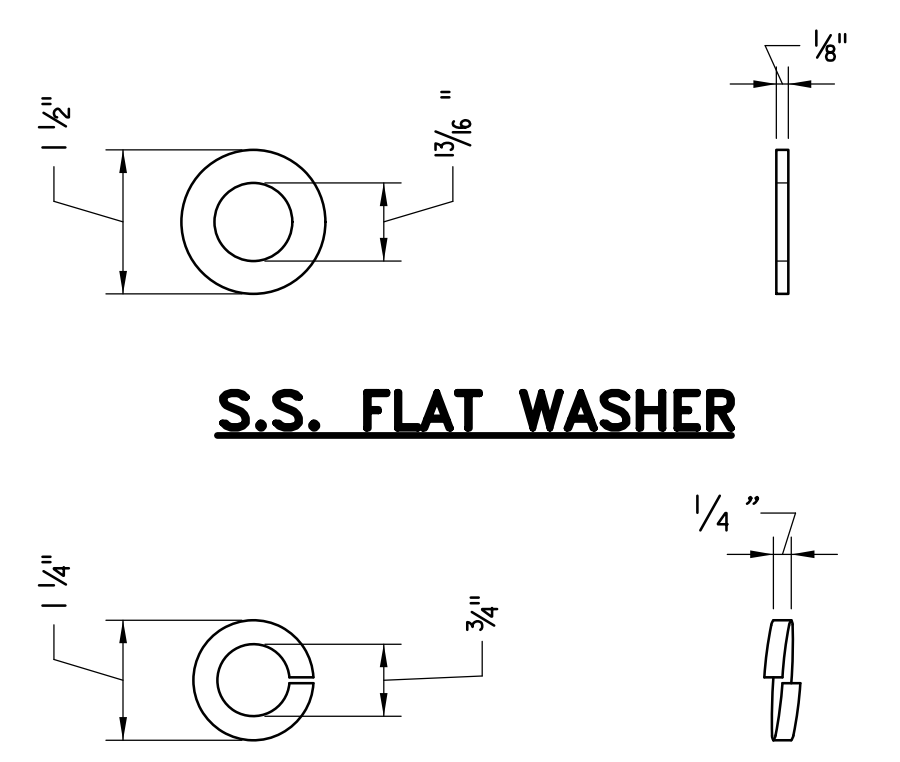


ANCHOR BOLT

MATERIAL: ASTM A-307 STEEL WITH ASTM 563 NUTS AND ASTM F436 WASHERS, GALVANIZED PER ASTM A153.

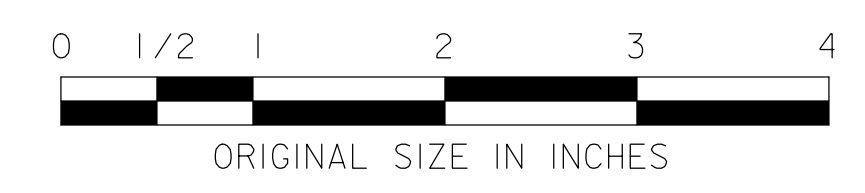
CAP SCREW

MATERIAL: STAINLESS STEEL, TYPE 304 PER ASTM A-193 GRADE B-8



S.S. FLAT WASHER

S.S. LOCK WASHER



ORIGINAL SIZE IN INCHES

NOTE:
DIMENSIONS MAY VARY TO ACCOMMODATE THE METER CABINET SUPPLIED.

NEW JERSEY TURNPIKE AUTHORITY
NEW JERSEY TURNPIKE GARDEN STATE PARKWAY
STANDARD DRAWINGS

TYPE G LOAD CENTER DETAILS - 2

OFFICE OF THE CHIEF ENGINEER
NEW JERSEY TURNPIKE AUTHORITY
WOODBIDGE, NEW JERSEY

STANDARD DRAWING
E-35

| REV. | DESCRIPTION | DATE |
|------|------------------|-------|
| 0 | REISSUED DRAWING | 09/21 |