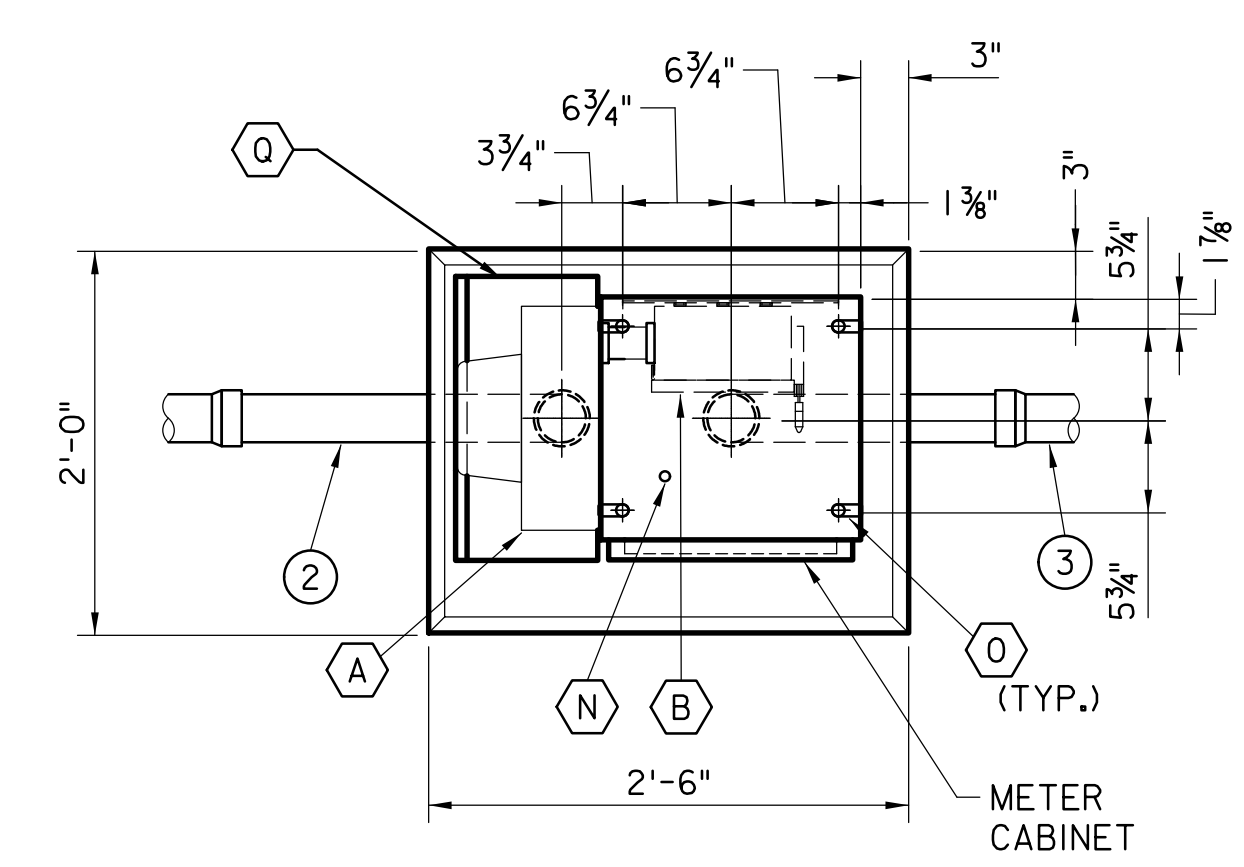


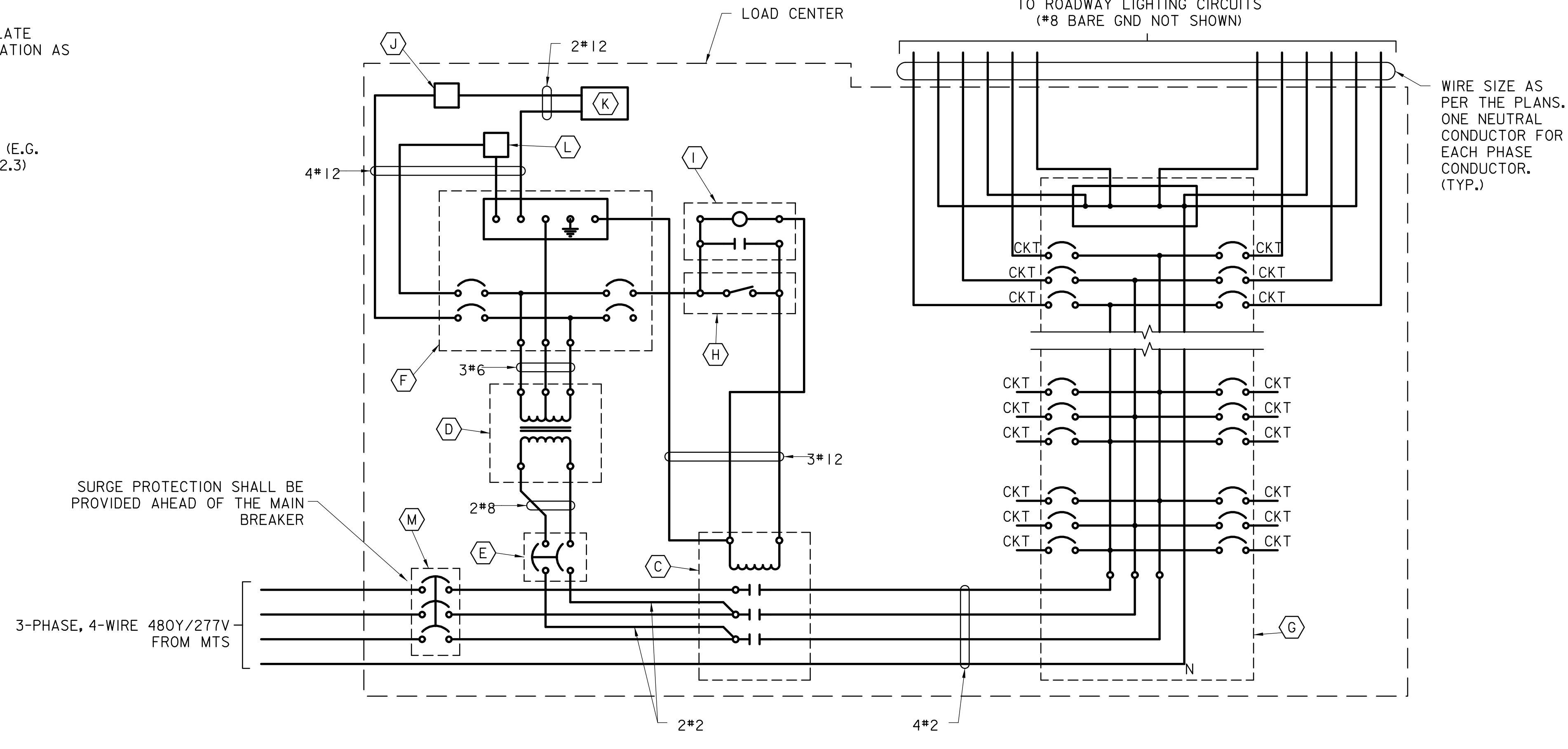
ELEVATION
SCALE: 1" = 1'-0"



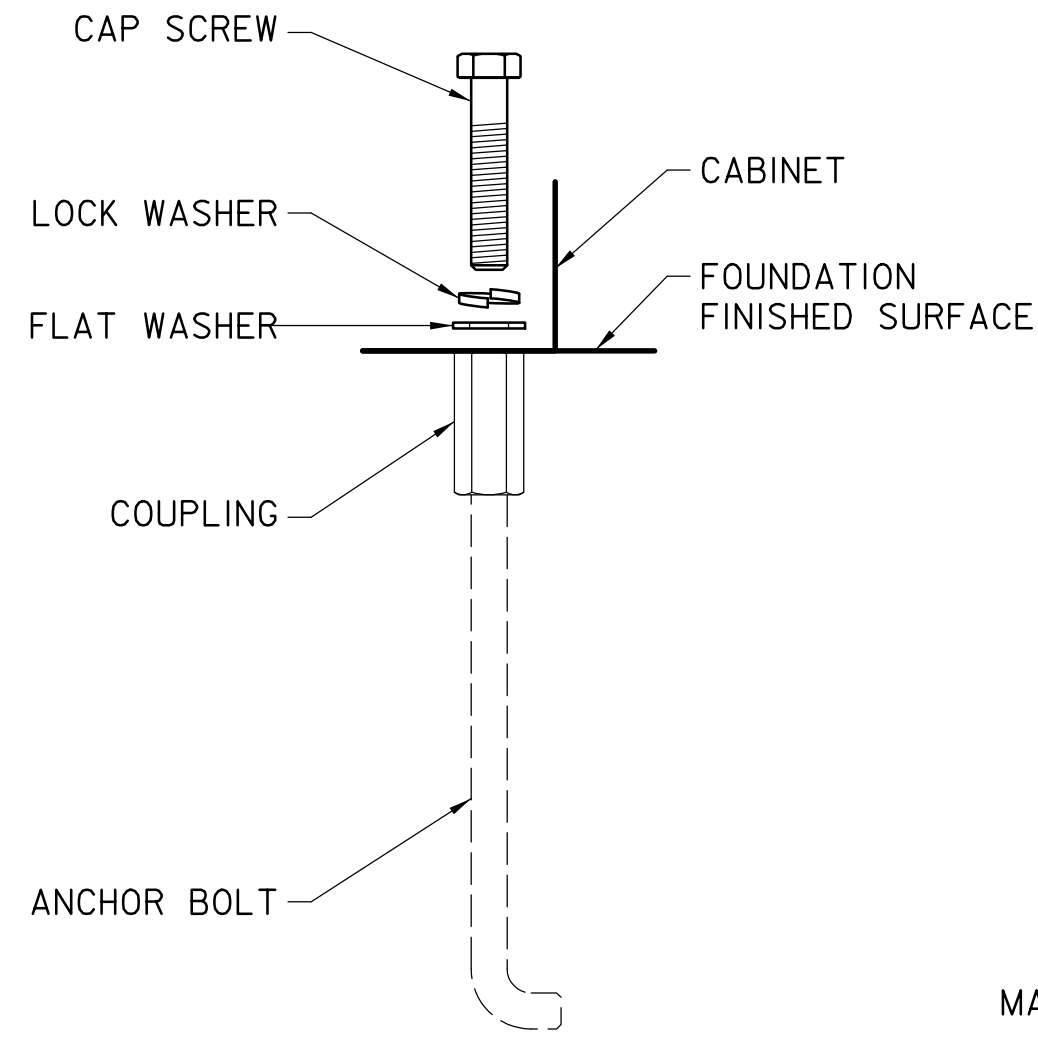
PLAN
SCALE: 1" = 1'-0"

NJTA METER CABINET TYPE F AND FOUNDATION

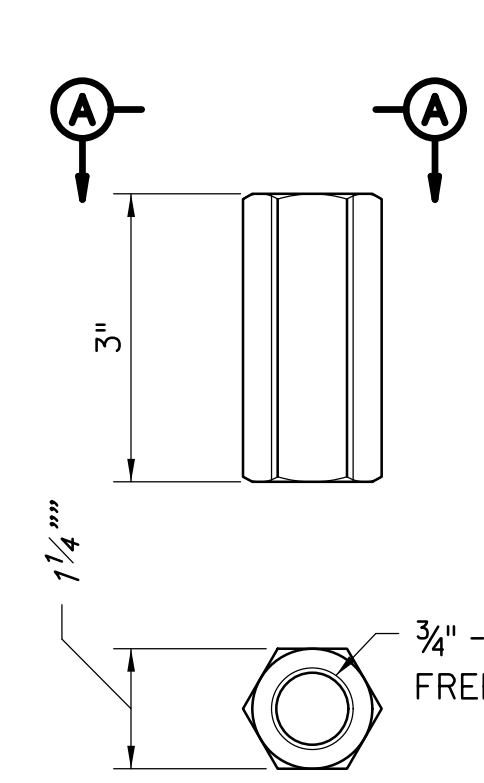
NOTE:
SEE STD. DWG. E-16 FOR NAMEPLATE DETAILS. NAMEPLATE MOUNTED ON THE CABINET DOOR SHALL HAVE INFORMATION AS SHOWN BELOW:
METER CABINET
480/240/208V, (1-PHASE OR 3-PHASE)
NJ TURNPIKE/GSP
EMERGENCY CONTACT: TP OPERATIONS 800-352-4848
METER CABINET NAME: UTILITY BUILDING DESIGNATION (E.G. SA11N) OR MILEPOST (E.G. MP112.3)



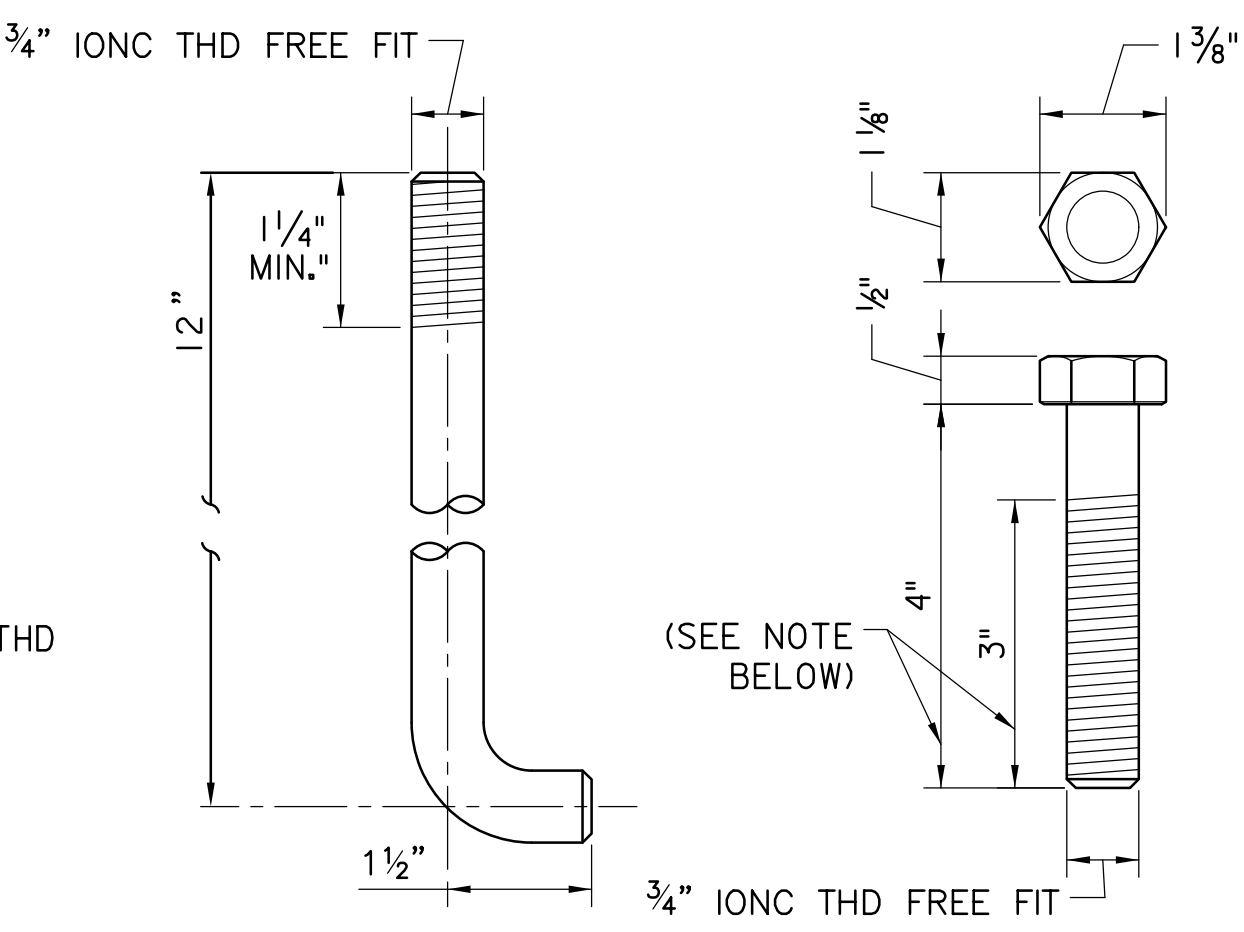
WIRING DIAGRAM
(N.T.S.)



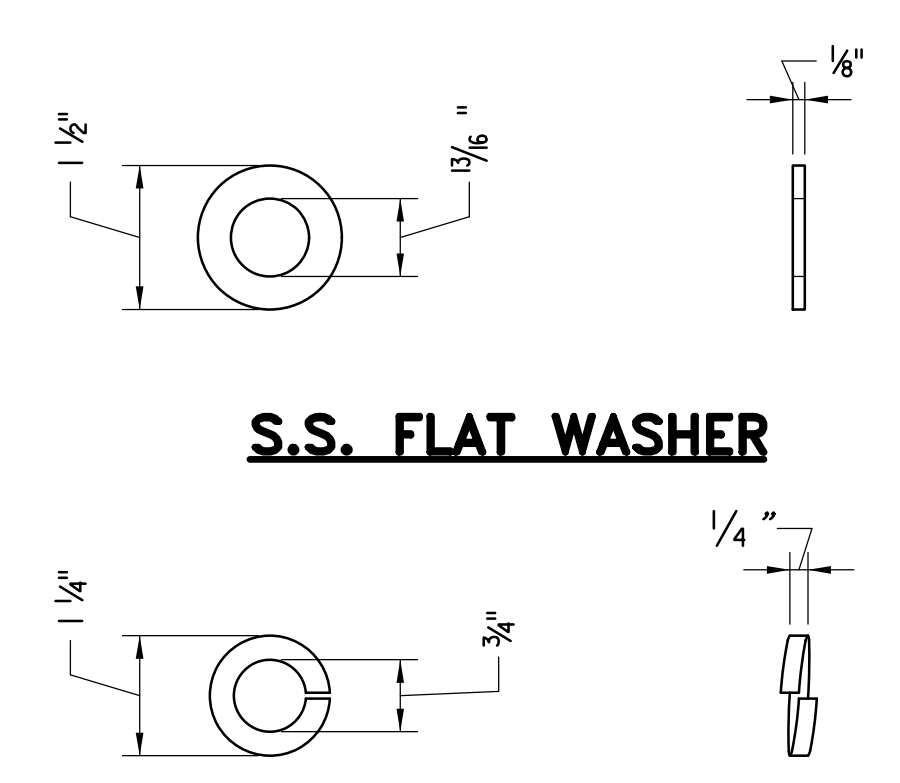
ANCHOR BOLT ASSEMBLY
SCALE: 3" = 1'-0"



SECTION A-A
COUPLING
MATERIAL: STEEL, GALVANIZED PER ASTM A-153

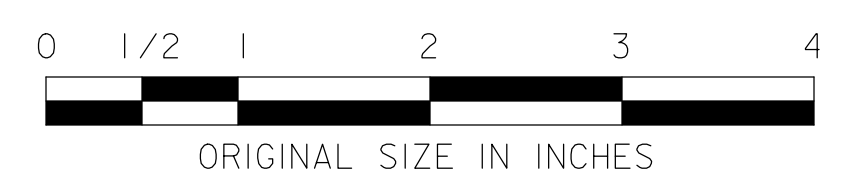


ANCHOR BOLT
MATERIAL: ASTM A-307 STEEL WITH ASTM 563 NUTS AND ASTM F436 WASHERS, GALVANIZED PER ASTM A153.



S.S. FLAT WASHER

S.S. LOCK WASHER



NOTE:
DIMENSIONS MAY VARY TO ACCOMMODATE THE METER CABINET SUPPLIED.

NOTE
1. SEE E-32 FOR LEGEND AND NOTES.

NEW JERSEY TURNPIKE AUTHORITY
NEW JERSEY TURNPIKE GARDEN STATE PARKWAY
STANDARD DRAWINGS

TYPE F LOAD CENTER DETAILS - 2

OFFICE OF THE CHIEF ENGINEER
NEW JERSEY TURNPIKE AUTHORITY
WOODBRIIDGE, NEW JERSEY

STANDARD DRAWING
E-33

REV.	DESCRIPTION	DATE
0	REISSUED DRAWING	09/21