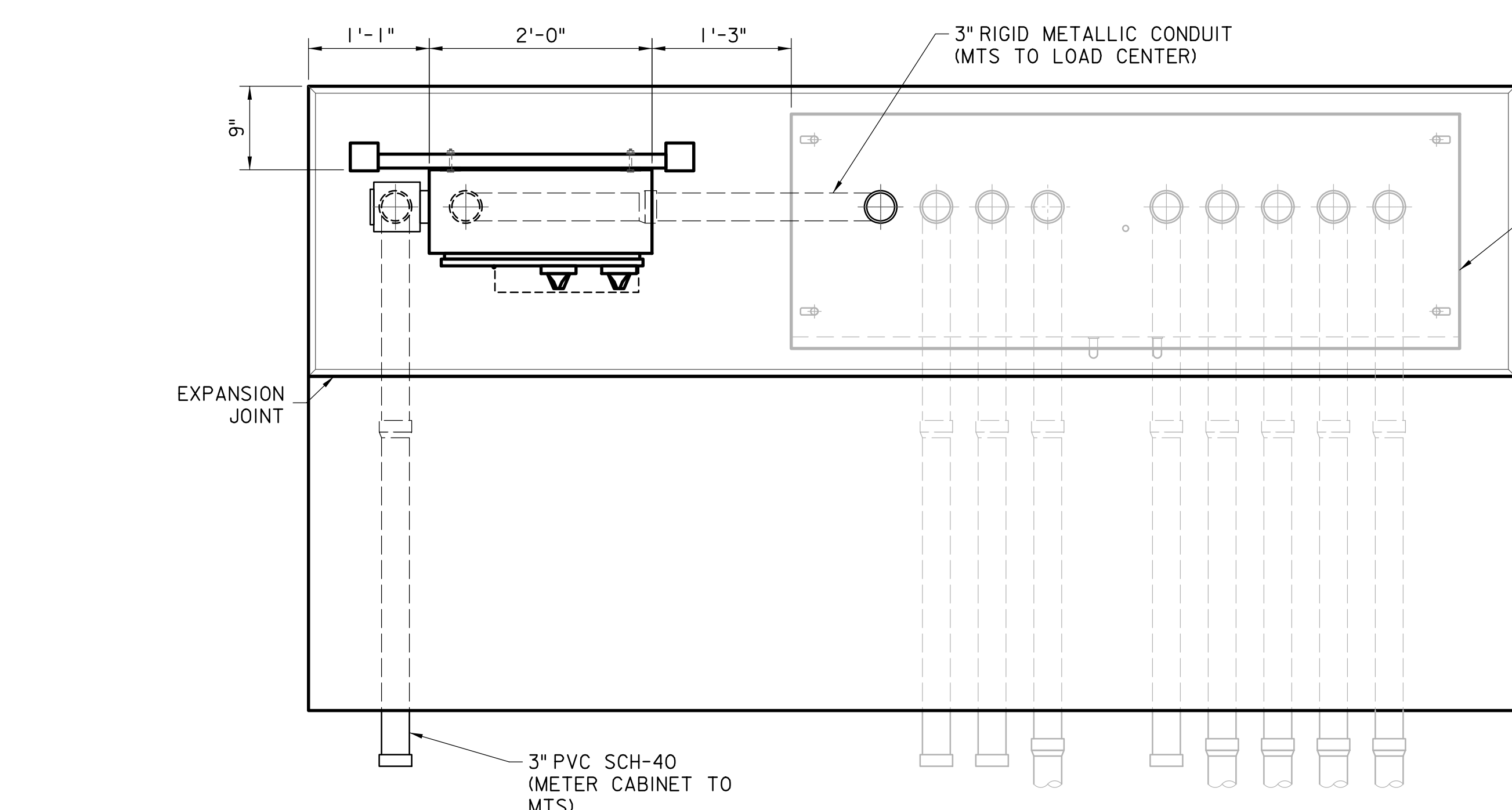


**ELEVATION**

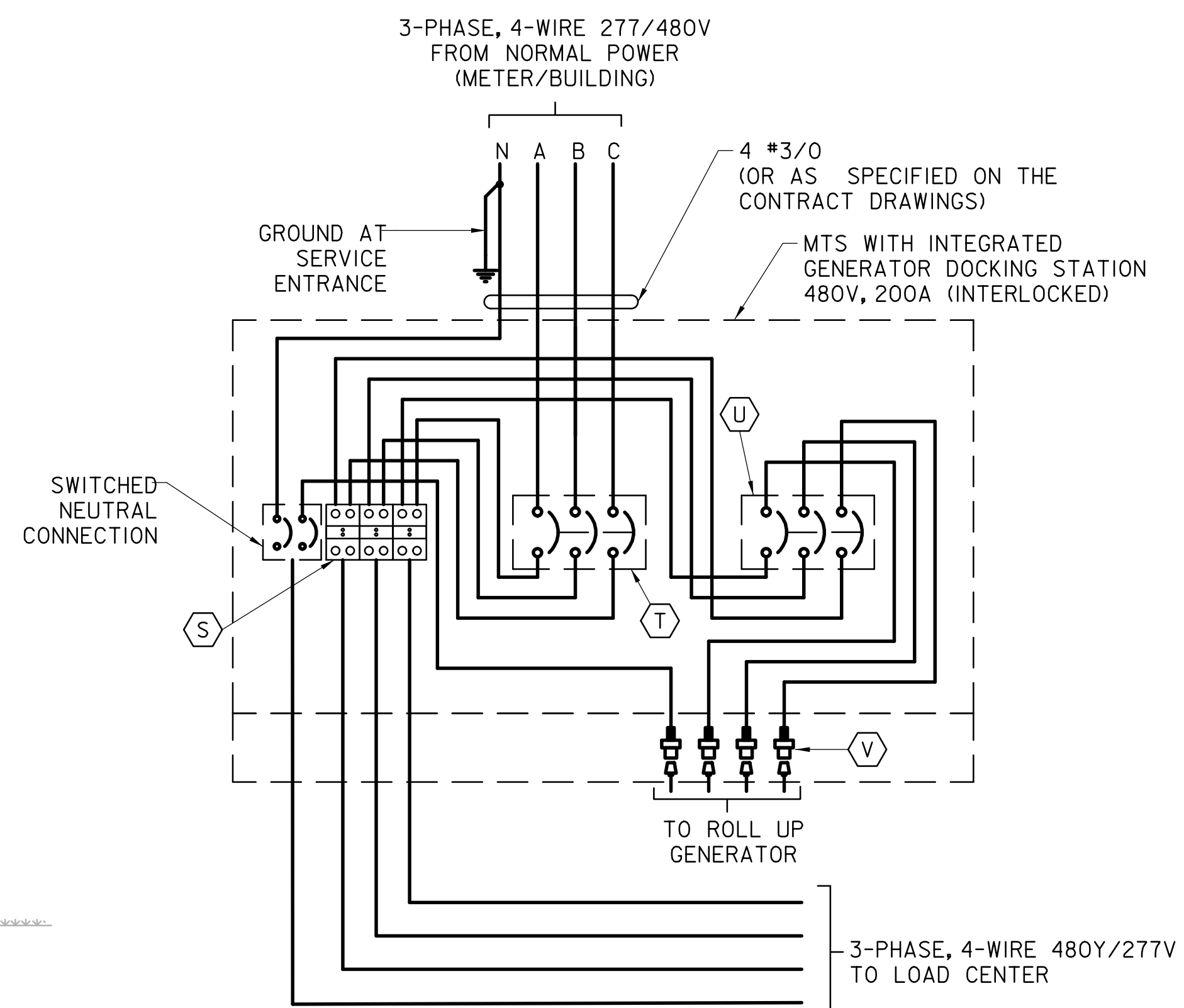


**PLAN**

**TYPICAL MANUAL TRANSFER SWITCH (MTS) INSTALLATION**

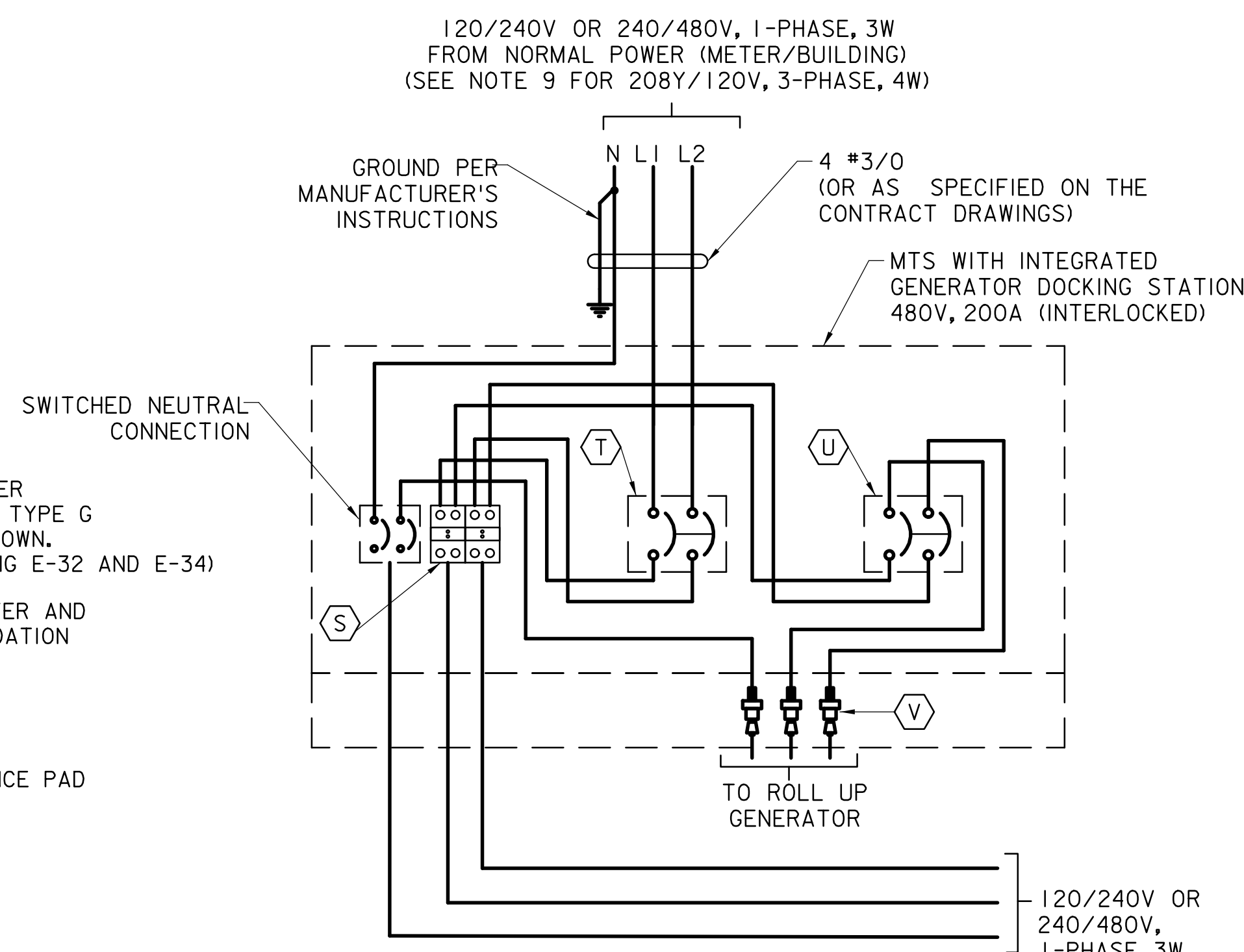
(TYPE F LOAD CENTER SHOWN, TYPE G SIMILAR)

SCALE: 1" = 1'-0"



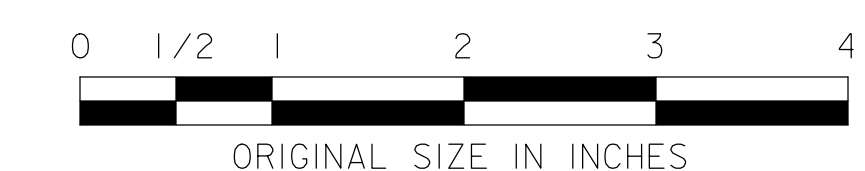
**TYPICAL MANUAL TRANSFER SWITCH (MTS) WIRING DIAGRAM FOR 480Y/277V INSTALLATION**

(SEE NOTE 8)



**TYPICAL MANUAL TRANSFER SWITCH (MTS) WIRING DIAGRAM FOR 120/240V OR 240/480V**

(SEE NOTE 9 FOR 120/208V, 3-PHASE, 4W)



**NOTES**

1. TYPICAL INSTALLATION SHOWN. LOCATION AND ARRANGEMENT FOR THE AREA WHERE REQUIRED SHALL BE TAKEN FROM THE CONTRACT PLANS AND SUBJECT TO THE APPROVAL OF THE ENGINEER.
2. TYPE F LOAD CENTER SHOWN. SEE LOAD CENTER, METER CABINET, AND FOUNDATION DETAILS ON DRAWINGS E-32 THROUGH E-35.
3. INSTALLATIONS MAY VARY FOR EACH INDIVIDUAL SITE. SEE CONTRACT PLANS FOR ALL CONDUIT AND WIRE SIZES AND CONDUIT ARRANGEMENTS.
4. MTS CABINET SHALL HAVE A 0.025 GAUGE ALUMINUM NAMEPLATE WITH DIE STAMPED BLACK LETTERS AND NUMBERS AND SHALL BE INSTALLED ON MTS CABINET DOOR. NAMEPLATE SHALL HAVE STAINLESS STEEL RIVET TYPE SCREW TO MOUNT IT ON THE CABINET. INSTALL NAMEPLATE 3" BELOW TOP OF CABINET.
5. SEE CONTRACT PLANS FOR MTS AND LOAD CENTER WIRING DIAGRAM.
6. THE CONTRACTOR SHALL LABEL ALL EQUIPMENTS WITH VOLTAGE AND THEIR USE. (EX.: 480Y/277V, 3-PHASE, LP ETC.)
7. ALL OPEN CONDUIT TERMINATIONS SHALL HAVE RODENT BLOCKING MATERIAL INSTALLED. SEE DETAILS ON STANDARD DRAWING E-16.
8. SEE DRAWING E-32 FOR 480Y/277V LEGEND AND OTHER NOTES.
9. REFER TO TYPE F LOAD CENTER WIRING DIAGRAM FOR 3-PHASE, 4-WIRE, 208Y/120V SYSTEM. DESIGNER TO MODIFY THE WIRING DIAGRAM AS REQUIRED. SEE DRAWING E-34 FOR 480Y/277V LEGEND AND OTHER NOTES.
10. ALL HARDWARE AND FASTENERS SHALL BE STAINLESS STEEL.

NEW JERSEY TURNPIKE AUTHORITY  
**NEW JERSEY TURNPIKE  
 GARDEN STATE PARKWAY**

STANDARD DRAWINGS

**MANUAL TRANSFER SWITCH  
 DETAILS**

OFFICE OF THE CHIEF ENGINEER  
 NEW JERSEY TURNPIKE AUTHORITY  
 WOODBRIDGE, NEW JERSEY

STANDARD DRAWING

REV.	DESCRIPTION	DATE
0	REISSUED DRAWING	09/21

**E-30**