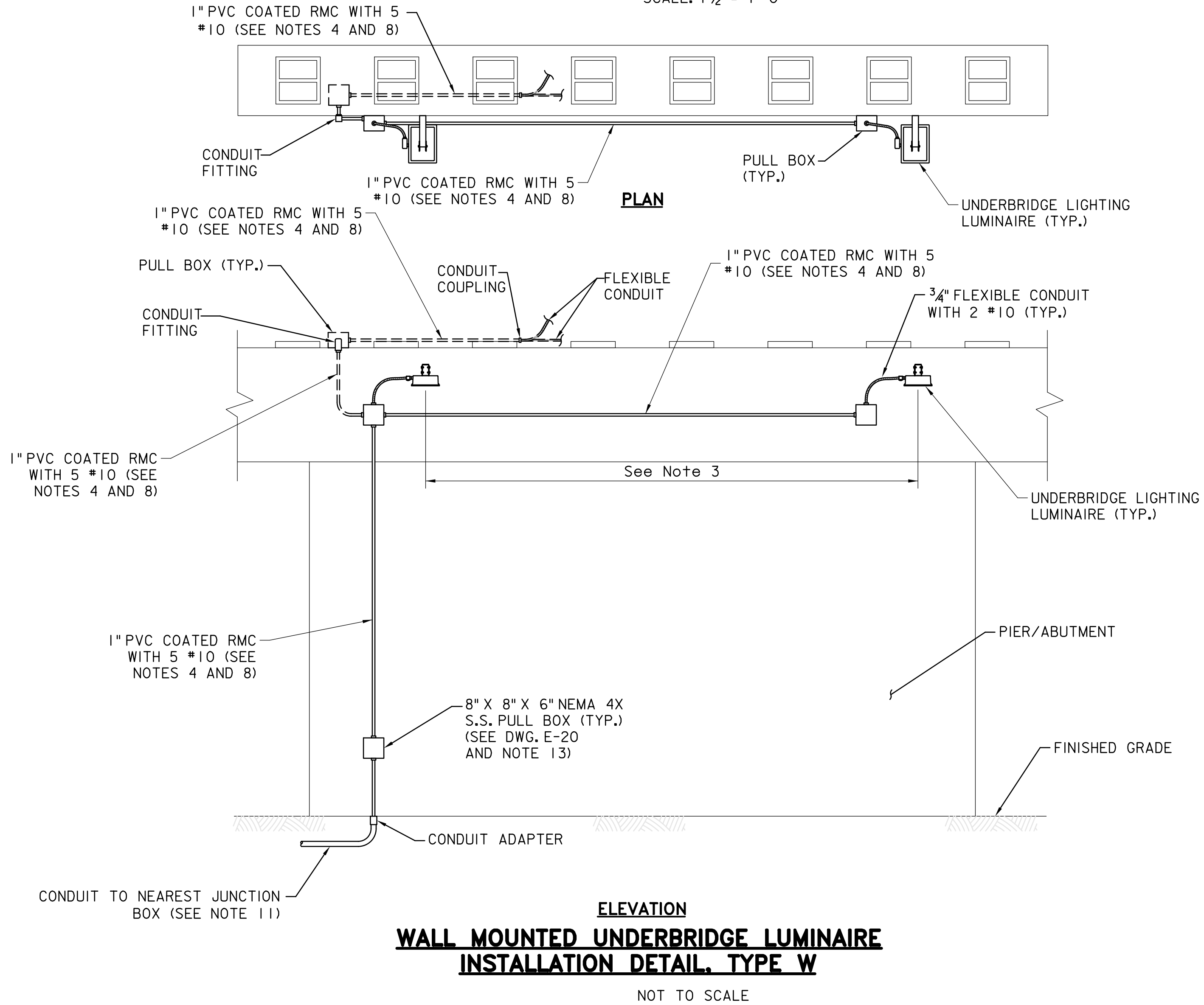


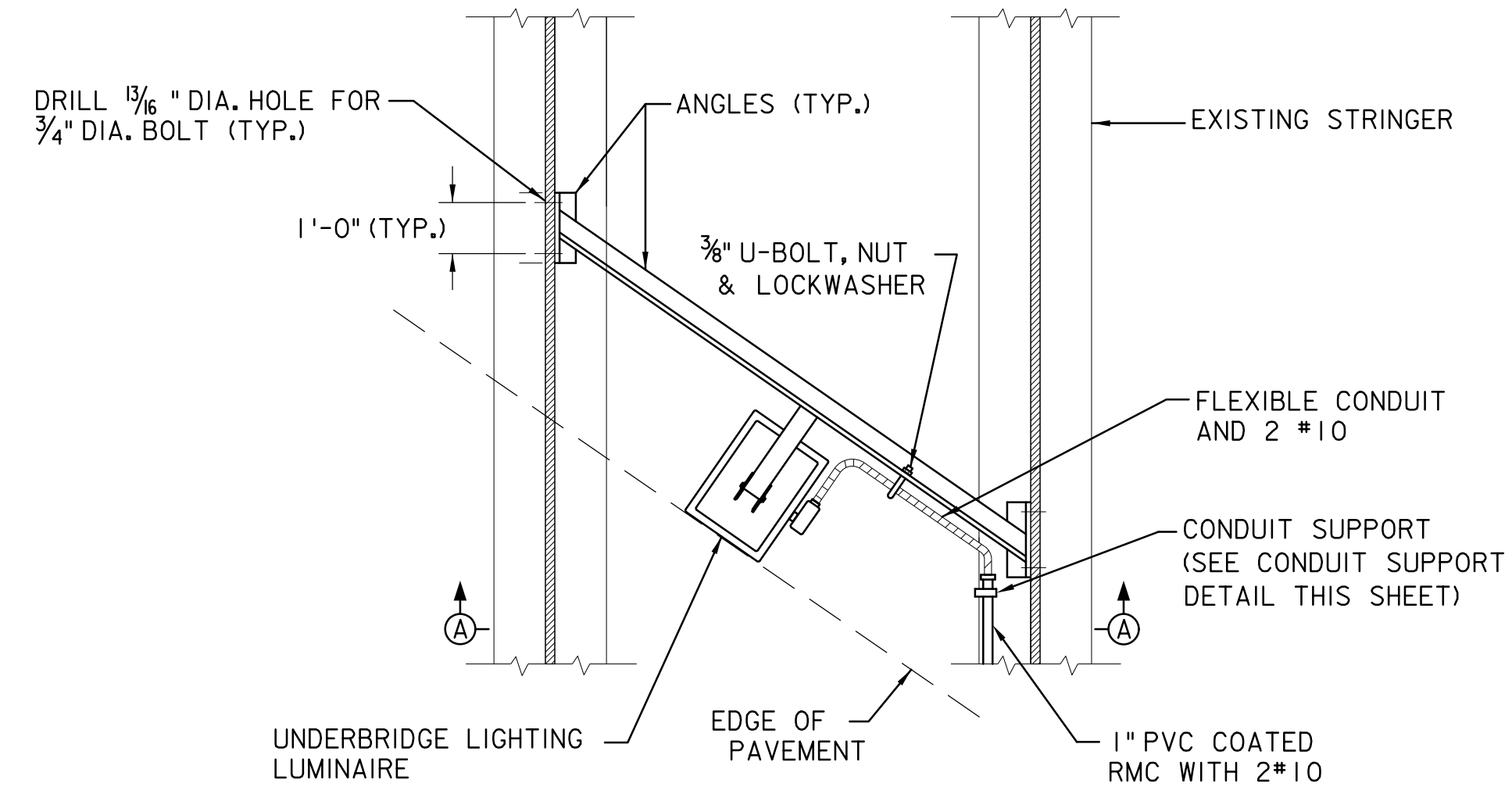
UNDERBRIDGE LIGHTING LUMINAIRE DETAIL

SCALE: 1 1/2" = 1'-0"

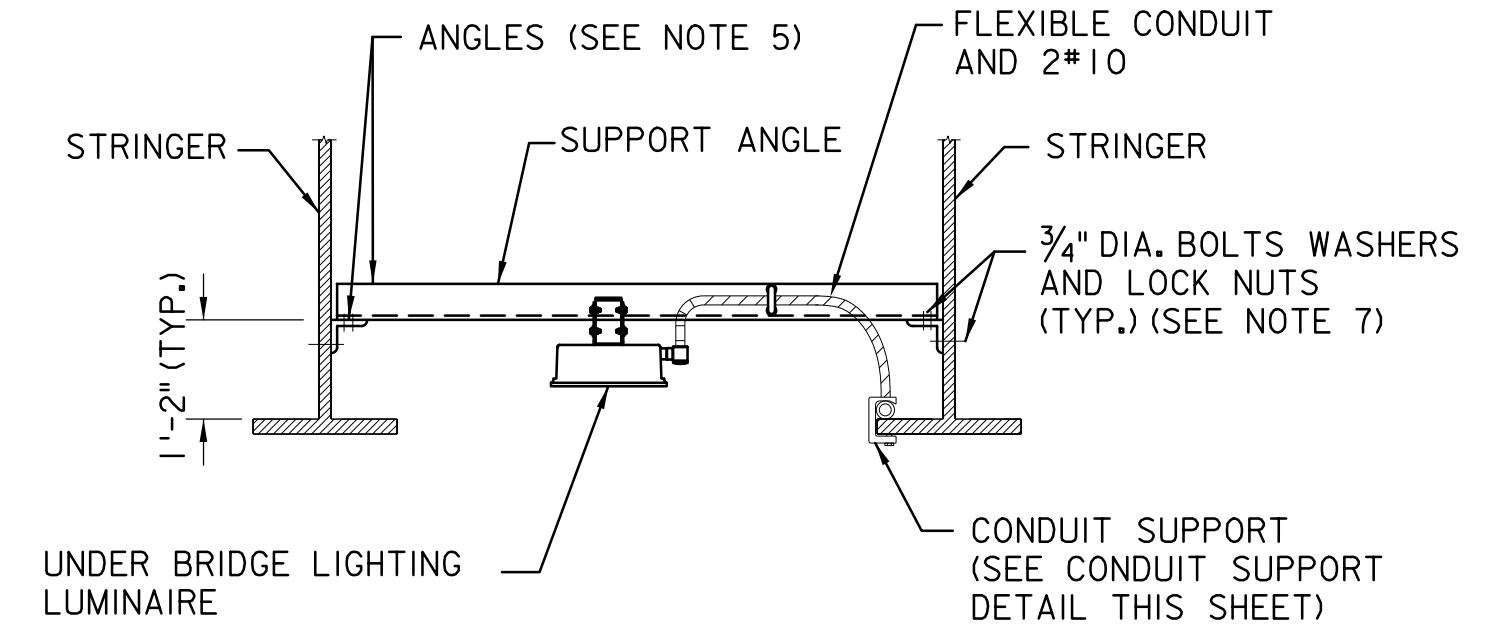


WALL MOUNTED UNDERBRIDGE LUMINAIRE INSTALLATION DETAIL, TYPE W

NOT TO SCALE



PLAN



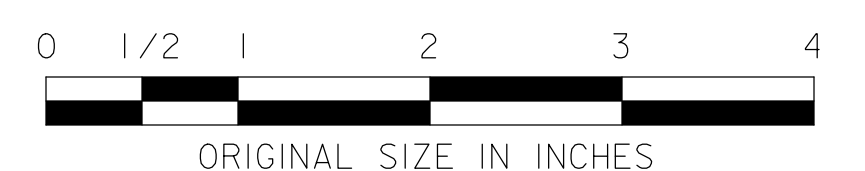
SECTION A-A

STRUCTURAL MOUNTED LUMINAIRE INSTALLATION DETAIL, TYPE S

NOT TO SCALE

NOTES

1. SHOWN DETAIL IS FOR A GENERIC LUMINAIRE. CONTRACTOR SHALL SUBMIT SHOP DRAWINGS FOR ALTERNATE UNDER BRIDGE LUMINAIRE INSTALLATION DETAILS.
2. UNDER BRIDGE LIGHTING FEEDER SHALL BE FUSED IN FIRST ABOVE GROUND JUNCTION BOX. SEE STANDARD DRAWING E-20 FOR DETAILS.
3. SPACING BETWEEN UNDER BRIDGE LUMINAIRES SHALL BE AS PER THE CONTRACT PLANS.
4. FOR STRUCTURAL MOUNTED LUMINAIRES, CONDUIT SHALL BE ROUTED THROUGH THE BRIDGE STRUCTURE.
5. ALL STRUCTURAL STEEL MEMBERS SHALL CONFORM TO ASTM DESIGNATION A709.
6. ALL STRUCTURAL STEEL PARTS OF THE CONDUIT SUPPORT ASSEMBLY SHALL CONFORM TO ASTM DESIGNATION A709.
7. ALL BOLTS, NUTS, AND WASHERS SHALL BE HIGH STRENGTH STEEL, CONFORMING TO SPECIFICATIONS SECTION 909.02 (A).
8. CONDUIT TO BE FASTENED ON TOP OF PIER WITH CLAMP AND CLAMPBACK BY MEANS OF 3/8" DIA. - 2 UNIT EXPANSION ANCHOR BOLTS, SPACED 5'-0" MAX. CONDUIT TO BE PLACED, AS DIRECTED BY THE ENGINEER.
9. PROVIDE WEEP HOLES IN LOW POINTS OF ALL CONDUIT RUNS, CONDUIT FITTINGS, AND NEMA 4X STAINLESS STEEL PULL BOX.
10. MAXIMUM LENGTH OF FLEXIBLE CONDUIT SHALL NOT EXCEED 3 FEET.
11. ROUTING OF INCOMING FEED MAY VARY BY LOCATION. SEE CONTRACT PLANS FOR PROPOSED ROUTE, CONDUIT AND WIRE INFORMATION.
12. SEE CONTRACT PLANS FOR STRUCTURAL STEEL PAINTING REQUIREMENTS, IF ANY.
13. IN LOCATIONS WHERE POWER IS FED TO UNDER BRIDGE LIGHTING FROM THE STRUCTURE ABOVE, THE FUSES SHALL BE LOCATED IN THE FIRST JUNCTION BOX.
14. ALL CONDUITS MOUNTED TO STRUCTURAL STEEL MEMBERS SHALL BE SECURED WITH NO-DRILL METHODS, AND WELDING OF CONDUIT SUPPORTS TO STRUCTURAL STEEL SHALL BE STRICTLY PROHIBITED. SEE STANDARD DRAWING E-26 FOR CONDUIT MOUNTING DETAILS.



NEW JERSEY TURNPIKE AUTHORITY
**NEW JERSEY TURNPIKE
 GARDEN STATE PARKWAY**
 STANDARD DRAWINGS

UNDER BRIDGE LIGHTING DETAILS

OFFICE OF THE CHIEF ENGINEER
 NEW JERSEY TURNPIKE AUTHORITY
 WOODBRIDGE, NEW JERSEY

STANDARD DRAWING
E-25

REV.	DESCRIPTION	DATE
0	REISSUED DRAWING	09/21