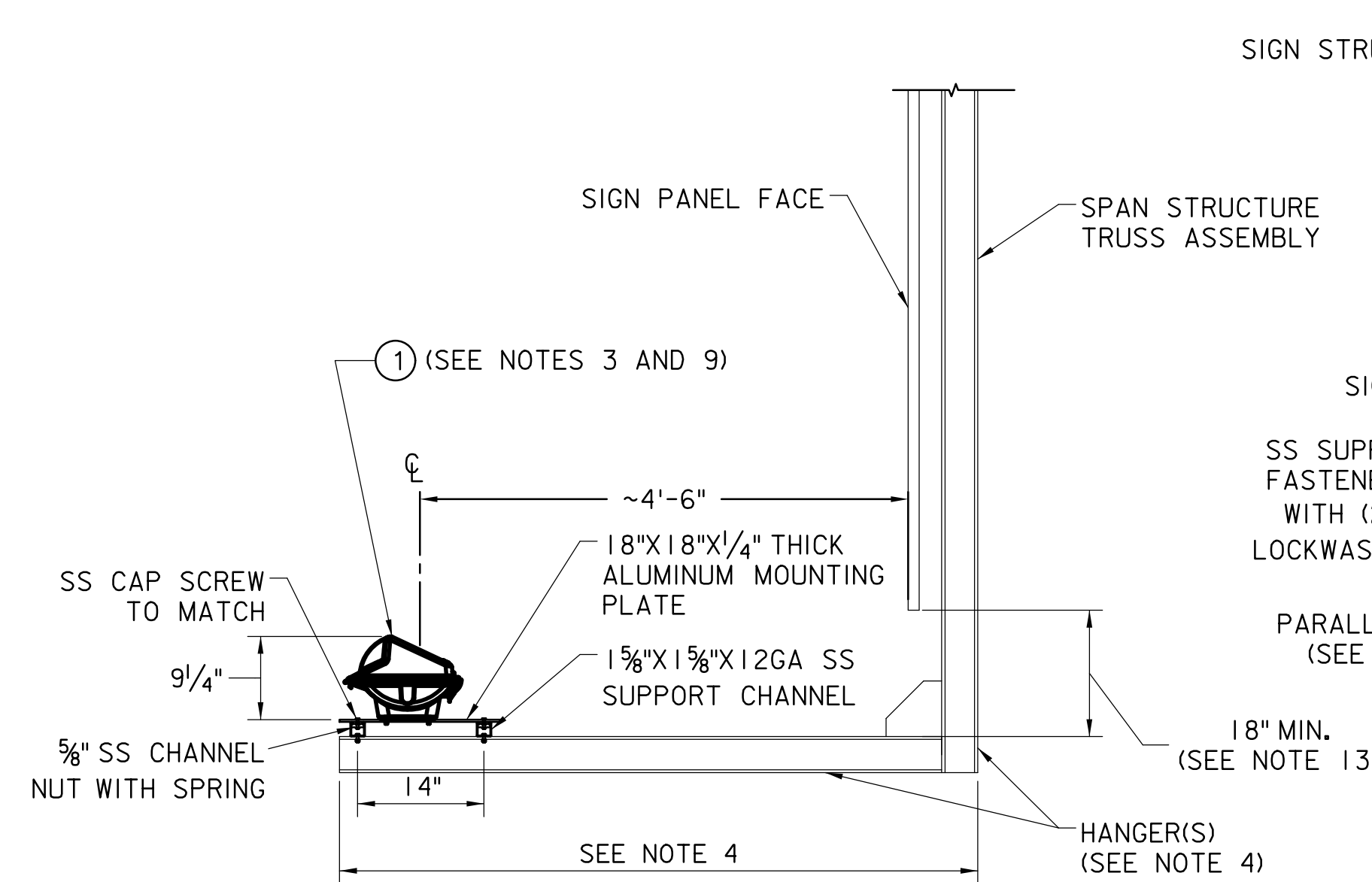


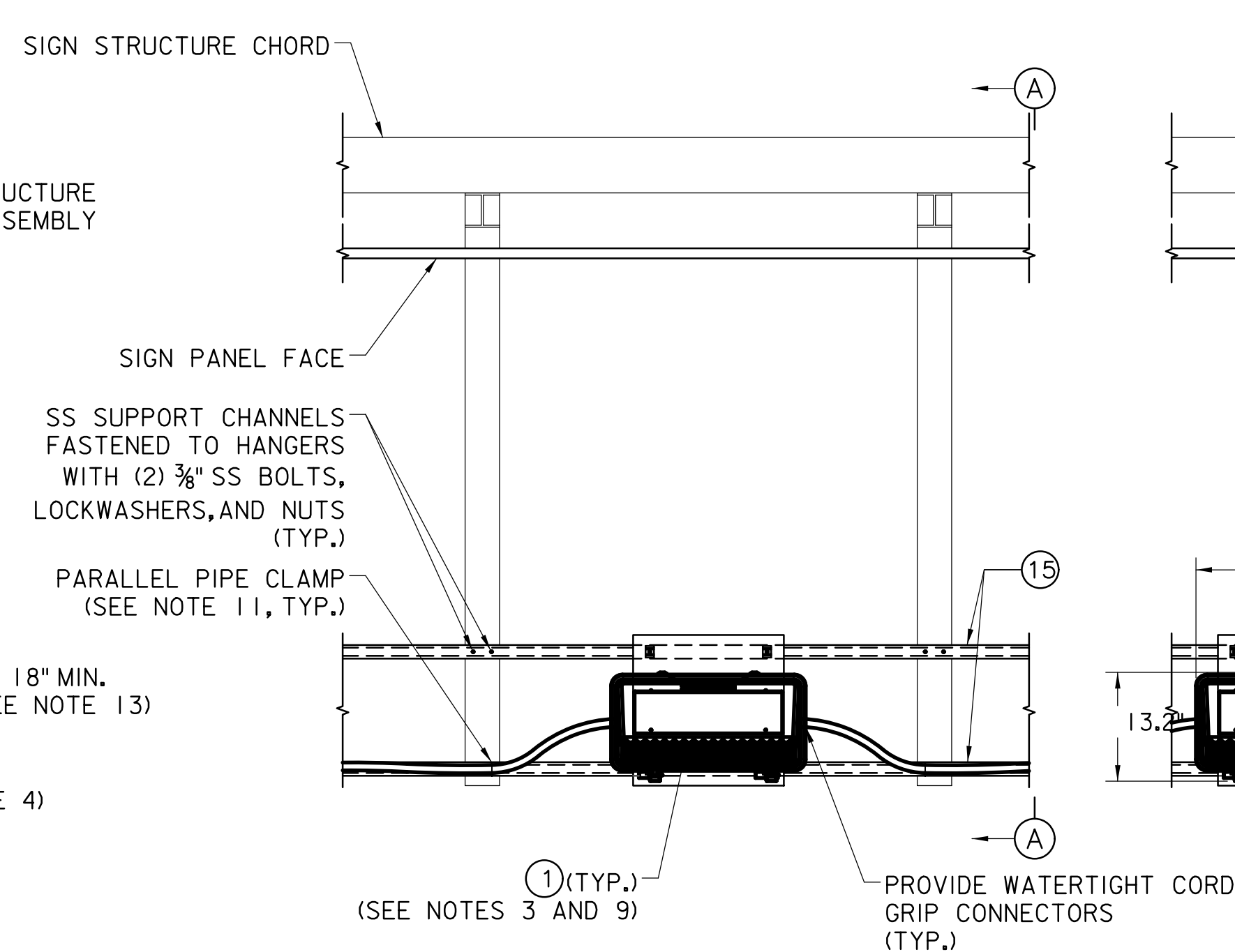
NOTES

- FOR LEGEND SEE STANDARD DRAWING E-21.
- STANDARD DRAWING E-21 AND E-22 SHALL BE USED JOINTLY FOR ALL DIRECTIONAL SIGN LIGHTING APPLICATIONS.
- LUMINAIRE SHALL BE CENTERED ON MOUNTING PLATE. THE MOUNTING PLATE SHALL BE ATTACHED TO THE SUPPORT CHANNEL AS SHOWN ON THE PLAN.
- FOR DETAILS AND MORE INFORMATION ON SIZE, MATERIAL, TYPE, AND ATTACHMENT OF SIGN HANGERS, SEE STANDARD DRAWING SI-19 OR AS SHOWN ON CONTRACT DRAWINGS.
- ALL CONDUIT MOUNTING AND SUPPORT HARDWARE SHALL BE STAINLESS STEEL.
- ENCLOSED CIRCUIT BREAKER ARRANGEMENT SHALL BE UTILIZED WITH ALL GROUP CONTROLLED ROADWAY LIGHTING CIRCUITS. LOAD CENTER WITH PHOTOELECTRIC CONTROL ARRANGEMENT SHALL BE UTILIZED WITH ALL 24HR NON-GROUP CONTROLLED CIRCUITS. VOLTAGE CHARACTERISTICS AND/OR TYPE OF SERVICE SHALL BE COORDINATED WITH THE LOCAL AVAILABLE UTILITY OR CIRCUIT TO BE UTILIZED. THE ENCLOSED CIRCUIT BREAKER SHALL BE INSTALLED ON THE DOWNSTREAM SIDE OF TRAFFIC ON THE SIGN FOUNDATION.
- NEUTRAL SHALL BE GROUNDED ONLY WHEN USED IN A SERVICE ENTRANCE LOAD CENTER, PROVIDE 3/4"X10'-0" MIN. GROUND ROD. PROVIDE ROD(S) TO SATISFY UTILITY SERVICE ENTRANCE REQUIREMENTS.
- GROUNDING FOR ALL SIGN STRUCTURES SHALL BE ACCOMPLISHED BY EXTENDING A GROUND WIRE IN THE ELECTRICAL SERVICE CONDUIT FROM THE GROUND ROD IN THE ADJACENT JUNCTION BOX TO THE GROUNDING STUD WITHIN THE SIGN STRUCTURE END FRAME COLUMN HANDHOLE. THE LOCATION OF THE GROUNDING LUG SHALL BE OPPOSITE OF THE HANDHOLE. CONTRACTOR SHALL TAP AND DRILL SIGN STRUCTURE FOR 1/4" BOLT AND FURNISH COMPRESSION GROUND LUG WITH A LOCK WASHER AND A 1/4" X 1" S.S. CAP SCREW.
- DETAILS SHOWN ON THIS SHEET ARE BASED ON A GENERIC LUMINAIRE. FIELD INSTALLATION SHALL BE AS DIRECTED ON THE CONTRACT PLANS. DIMENSIONS AND DETAILS MAY DIFFER BASED ON THE LUMINAIRE INSTALLED.
- CONDUIT SHALL TRANSITION FROM THE FLEXIBLE METALLIC CONDUIT TO ALUMINUM CONDUIT ON SIGN HANGERS. CONDUITS SHALL BE SUPPORTED ALONG SIGN HANGERS USING AN ATTACHMENT METHODS AS SHOWN ON THIS DRAWING.
- SOOW CABLE SHALL BE ATTACHED TO THE STAINLESS STEEL SUPPORT CHANNEL USING PARALLEL PIPE CLAMP. THE CABLE SHALL BE SUPPORTED AT EVERY 5FT.
- SIGN LIGHTING LUMINAIRES SHALL BE TILTED NO MORE THAN 10 DEGREES FROM HORIZONTAL. THE CONTRACTOR SHALL PROVIDE EXTERNAL BRACKET TO SUPPORT LUMINAIRE TILT. SUBMIT THE BRACKET SHOP DRAWING TO THE ENGINEER FOR APPROVAL.
- FOR MULTIPLE (SIDE-BY-SIDE) SIGN PANEL CONFIGURATION, 18" MIN SPACING SHALL BE MAINTAINED FROM THE BOTTOM OF THE LOWER SIGN PANEL.



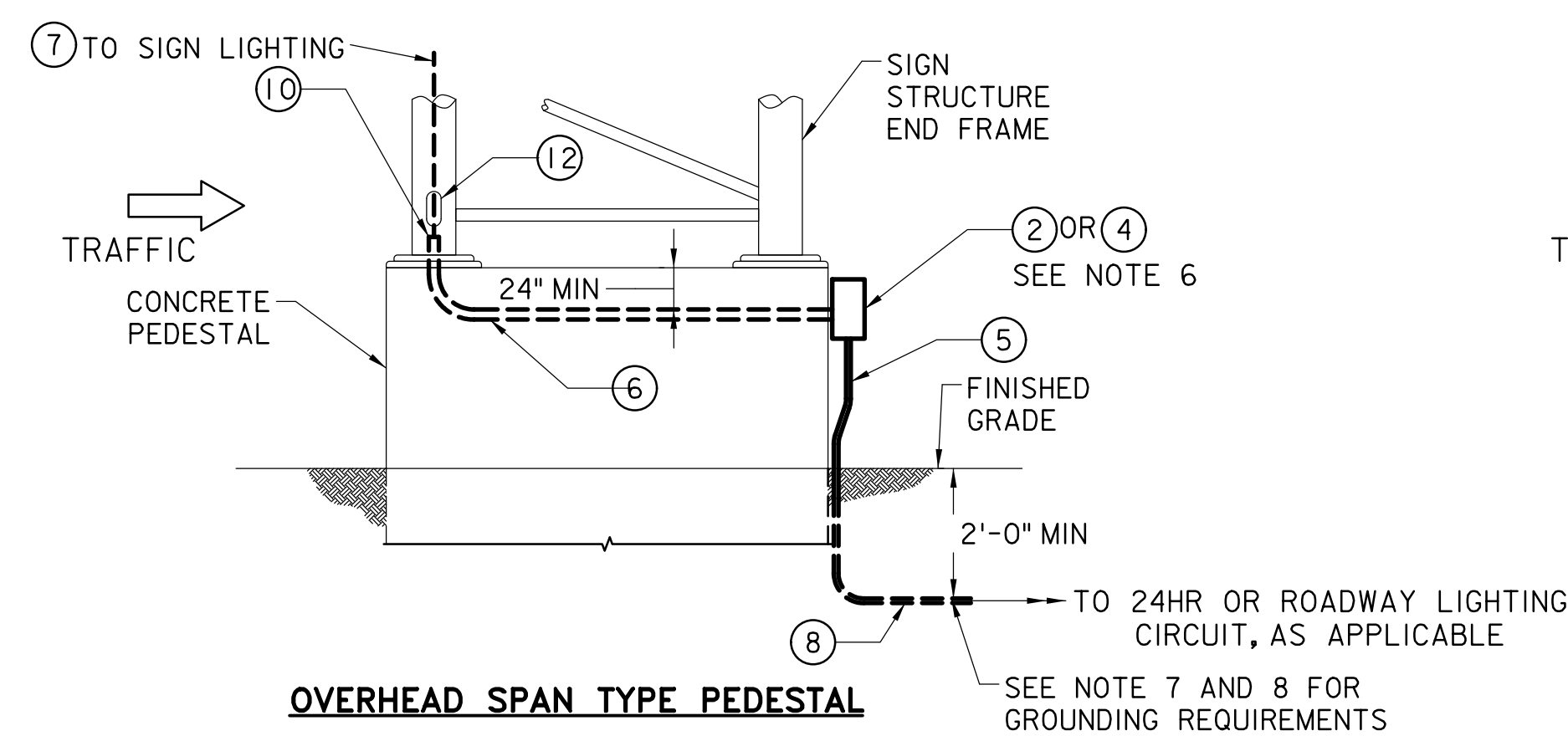
SIGN LIGHTING INSTALLATION - SECTION A-A

SCALE: 3/4" = 1'-0"
(WIRING AND CONDUIT NOT SHOWN, ONLY SIGN LIGHTING SUPPORTS SHOWN FOR CLARITY)

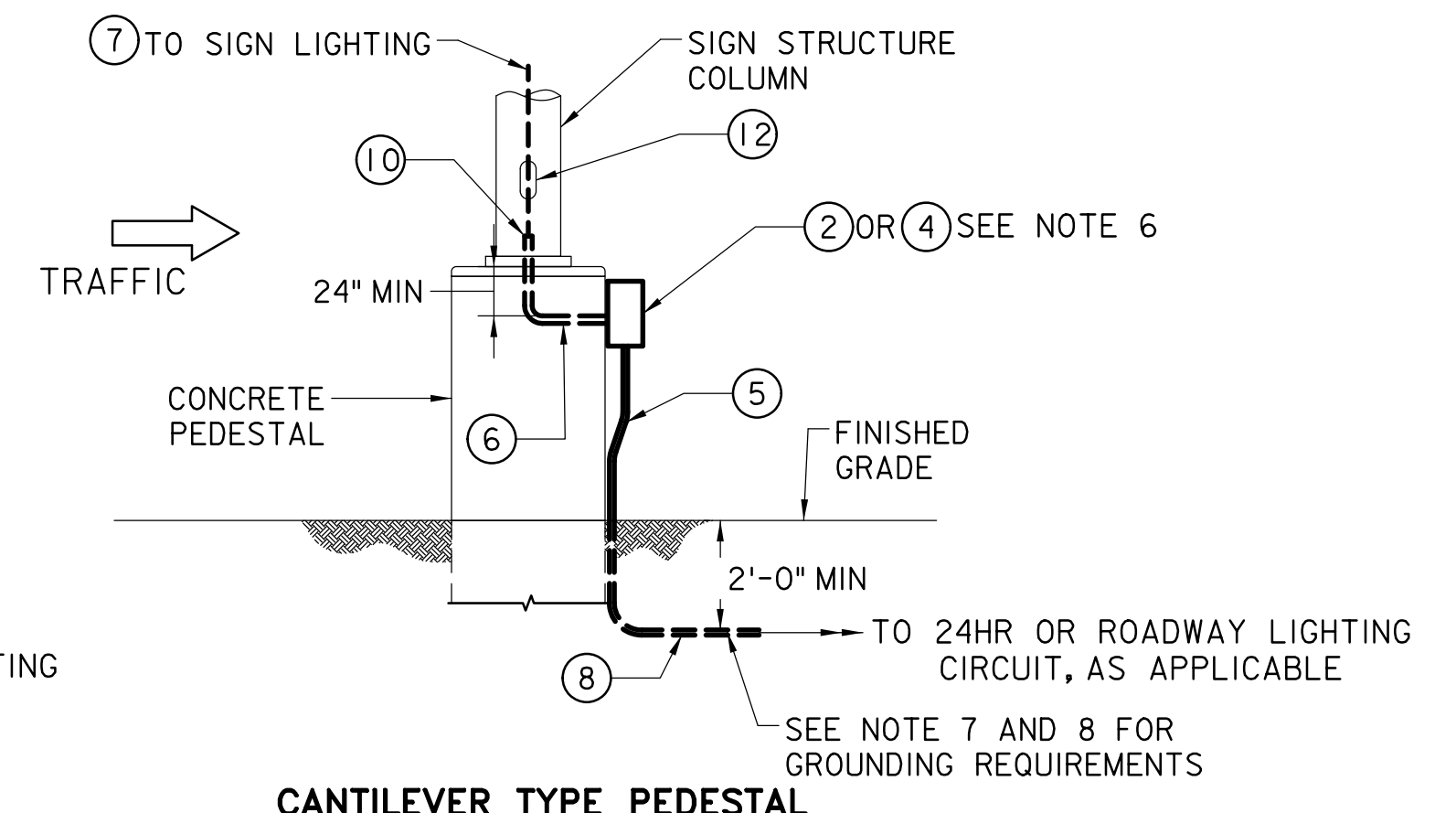


SIGN LIGHTING INSTALLATION - PLAN

SCALE: 3/4" = 1'-0"
(ONLY SIGN LIGHTING SUPPORTS SHOWN FOR CLARITY)



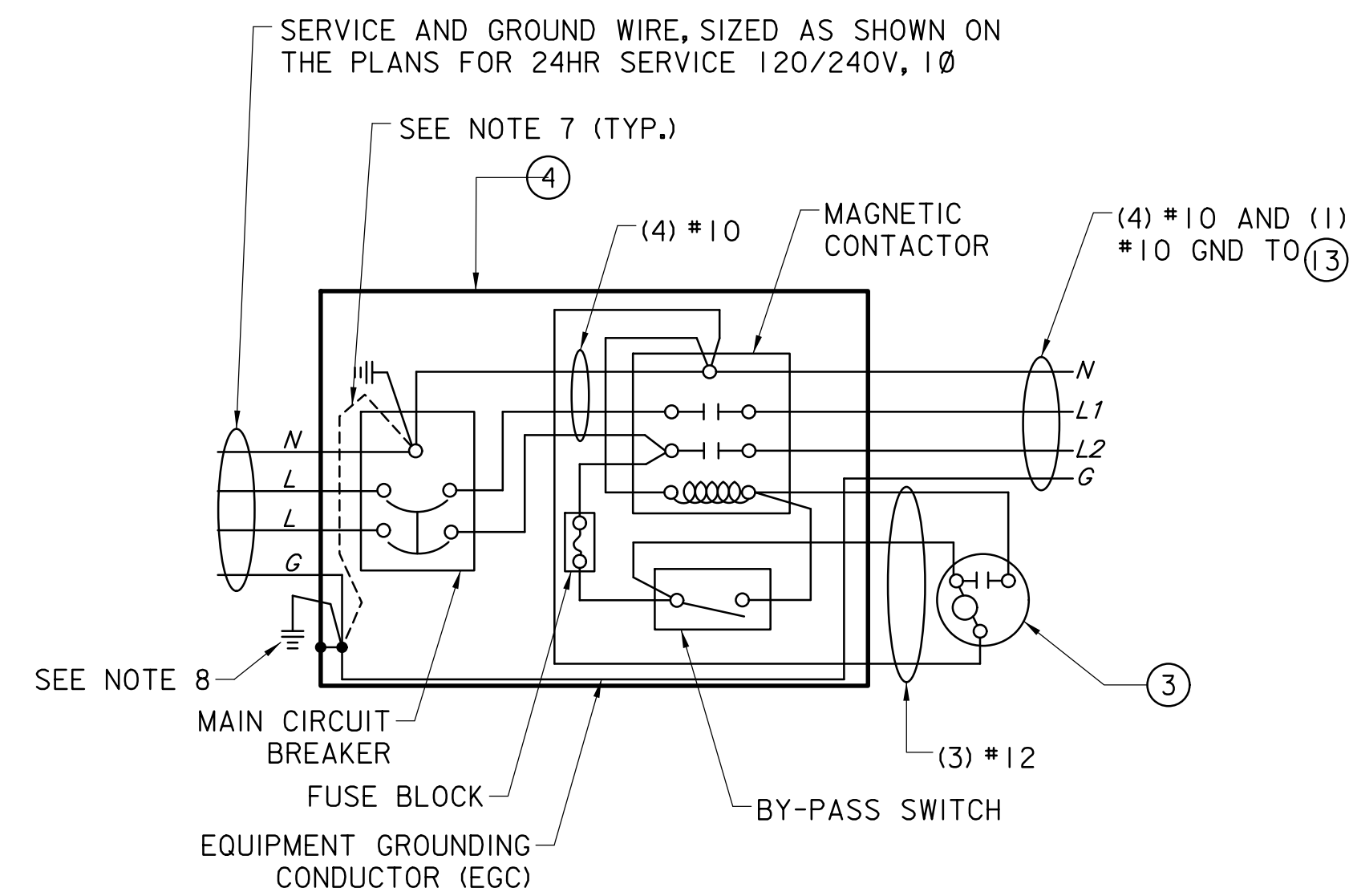
OVERHEAD SPAN TYPE PEDESTAL



CANTILEVER TYPE PEDESTAL

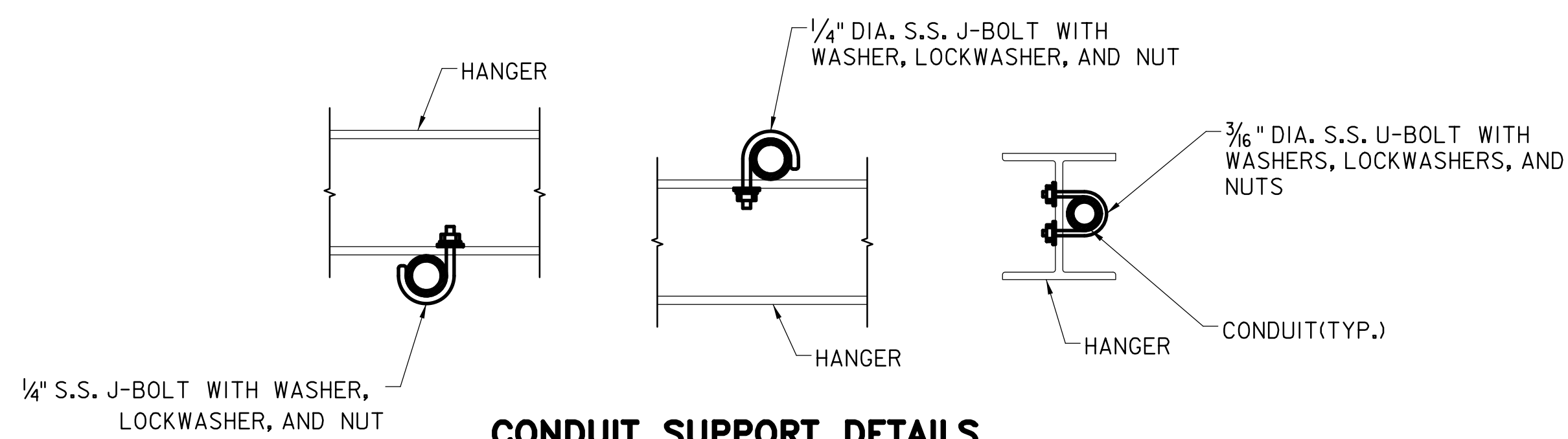
SERVICE EQUIPMENT INSTALLATION DETAILS AT SIGN STRUCTURE FOUNDATIONS

SCALE: " = 1'-0"



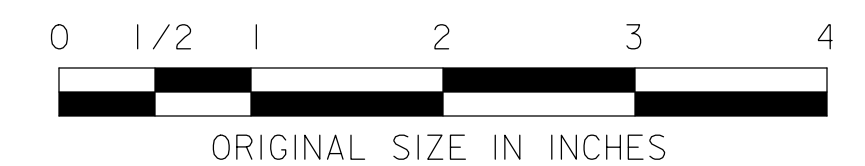
LOAD CENTER DIAGRAM FOR 24HR CIRCUITS

NOT TO SCALE
(SEE NOTE 6)
SINGLE-PHASE, 3-WIRE DISTRIBUTION IS SHOWN.
REVISE CIRCUIT DIAGRAM FOR 3-PHASE, 4-WIRE SYSTEM.



CONDUIT SUPPORT DETAILS

NOT TO SCALE



NEW JERSEY TURNPIKE AUTHORITY
NEW JERSEY TURNPIKE
GARDEN STATE PARKWAY
STANDARD DRAWINGS

SIGN LIGHTING DETAILS - 2

OFFICE OF THE CHIEF ENGINEER
NEW JERSEY TURNPIKE AUTHORITY
WOODBIDGE, NEW JERSEY

STANDARD DRAWING
E-22

0	REISSUED DRAWING	09/21
REV.	DESCRIPTION	DATE