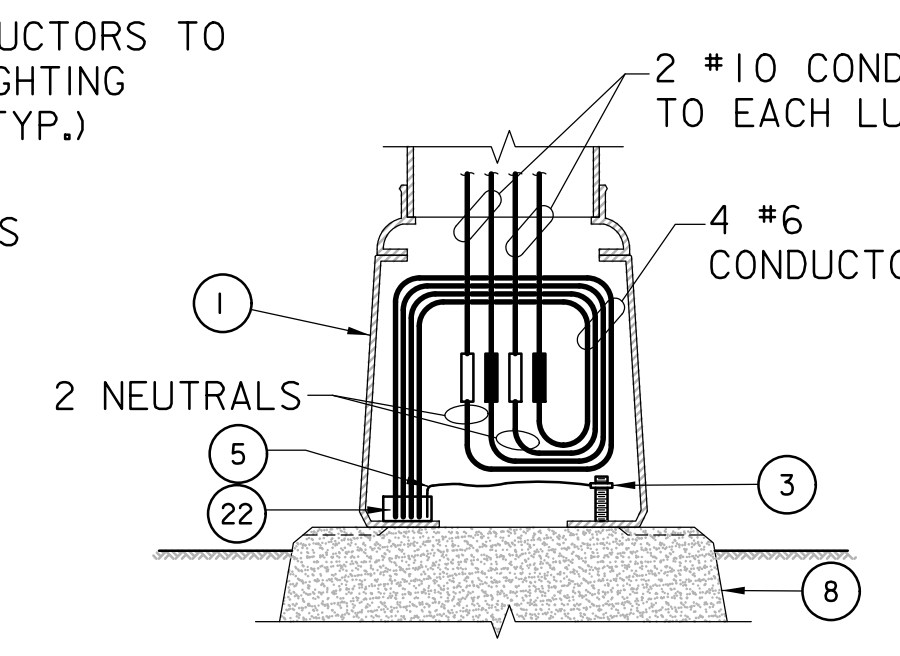
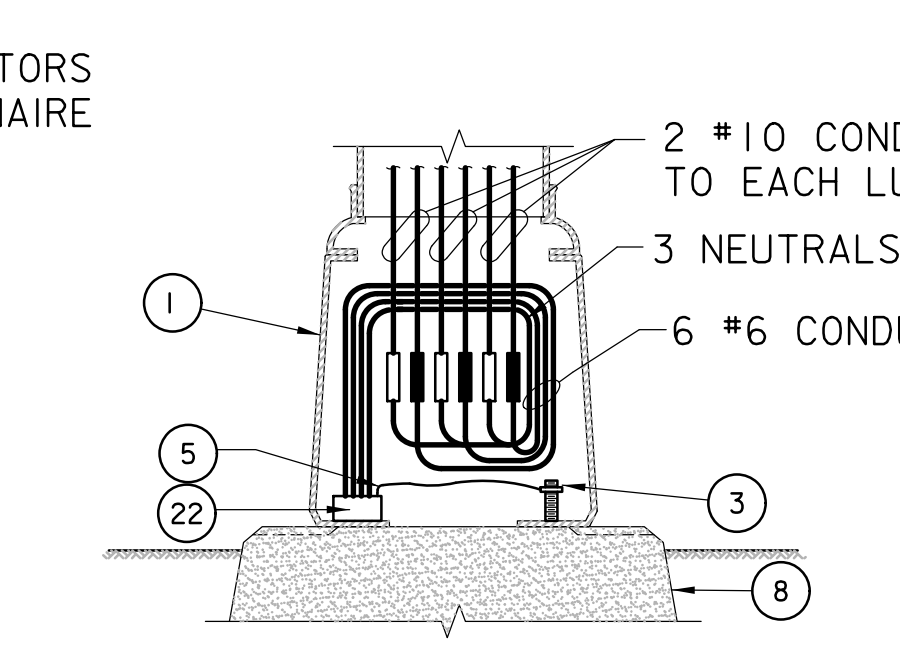


SINGLE LUMINAIRE LTG. STANDARDS



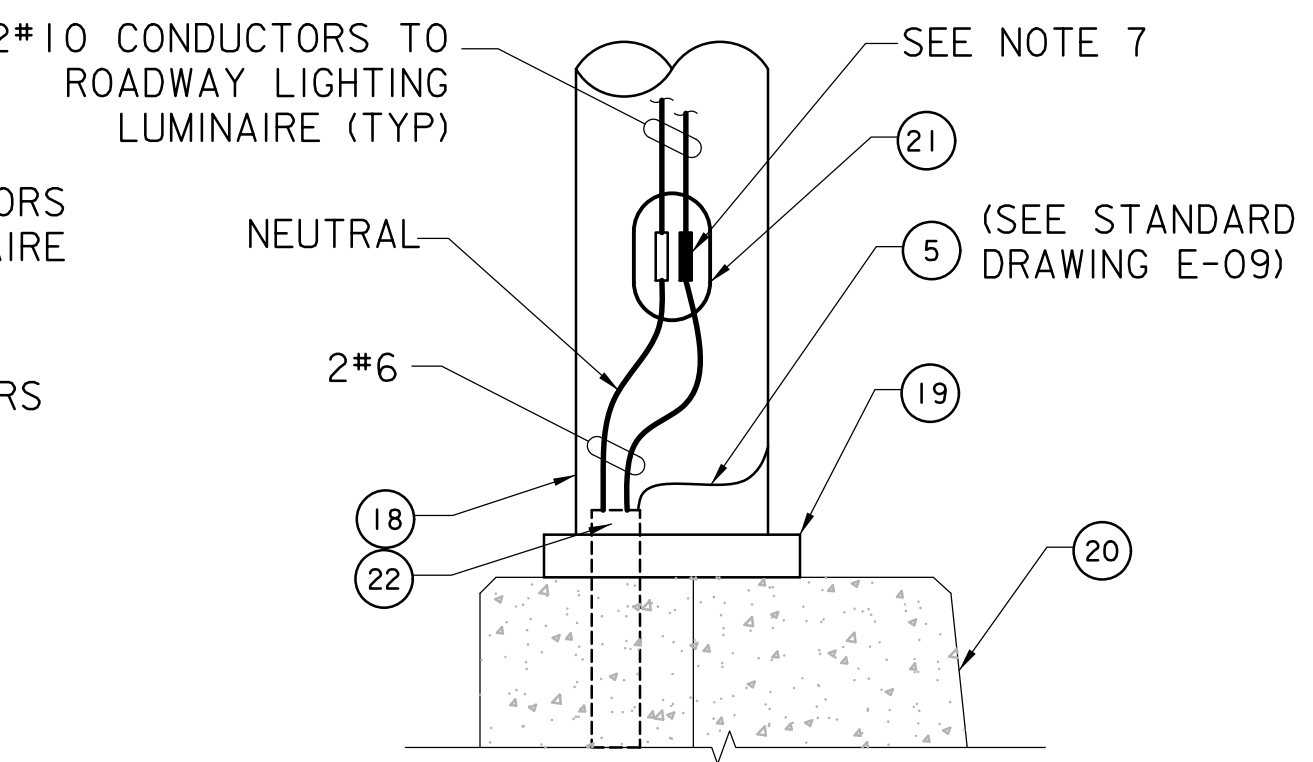
TWIN LUMINAIRES LTG. STANDARDS



TRIPLE LUMINAIRES LTG. STANDARDS

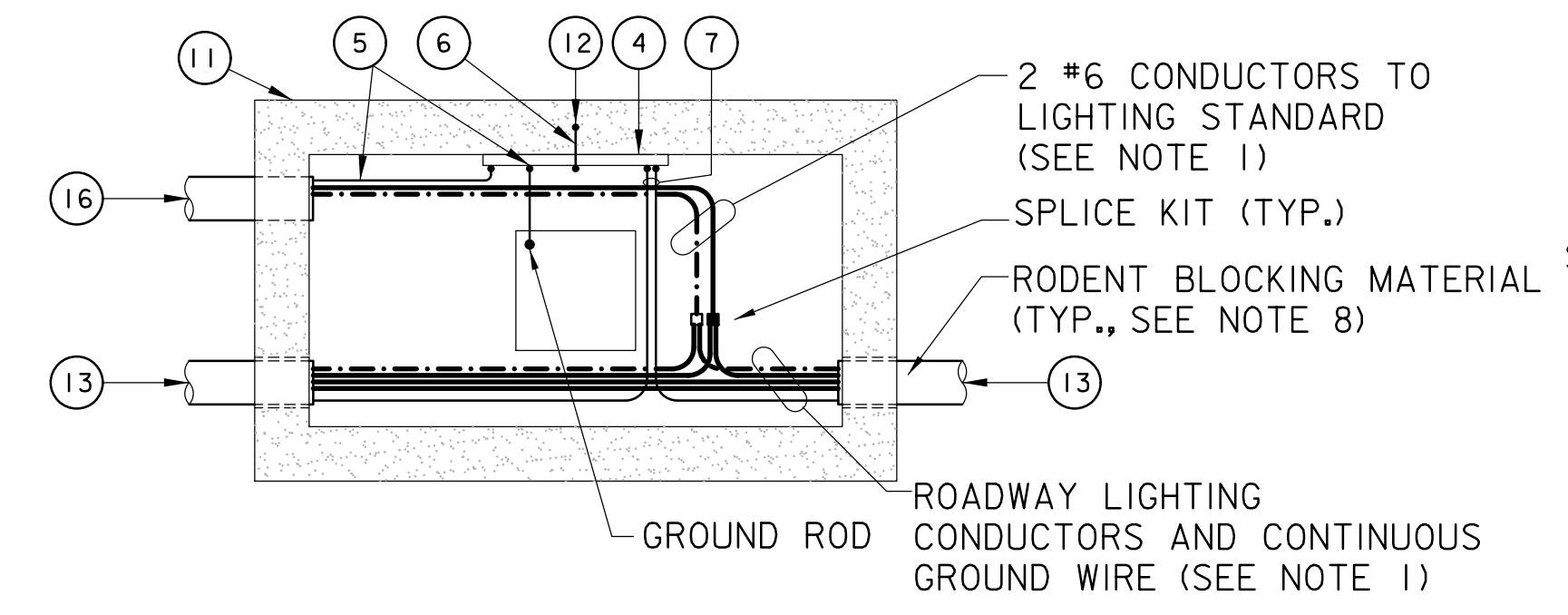
TYPICAL WIRING IN TRANSFORMER BASES

NOT TO SCALE

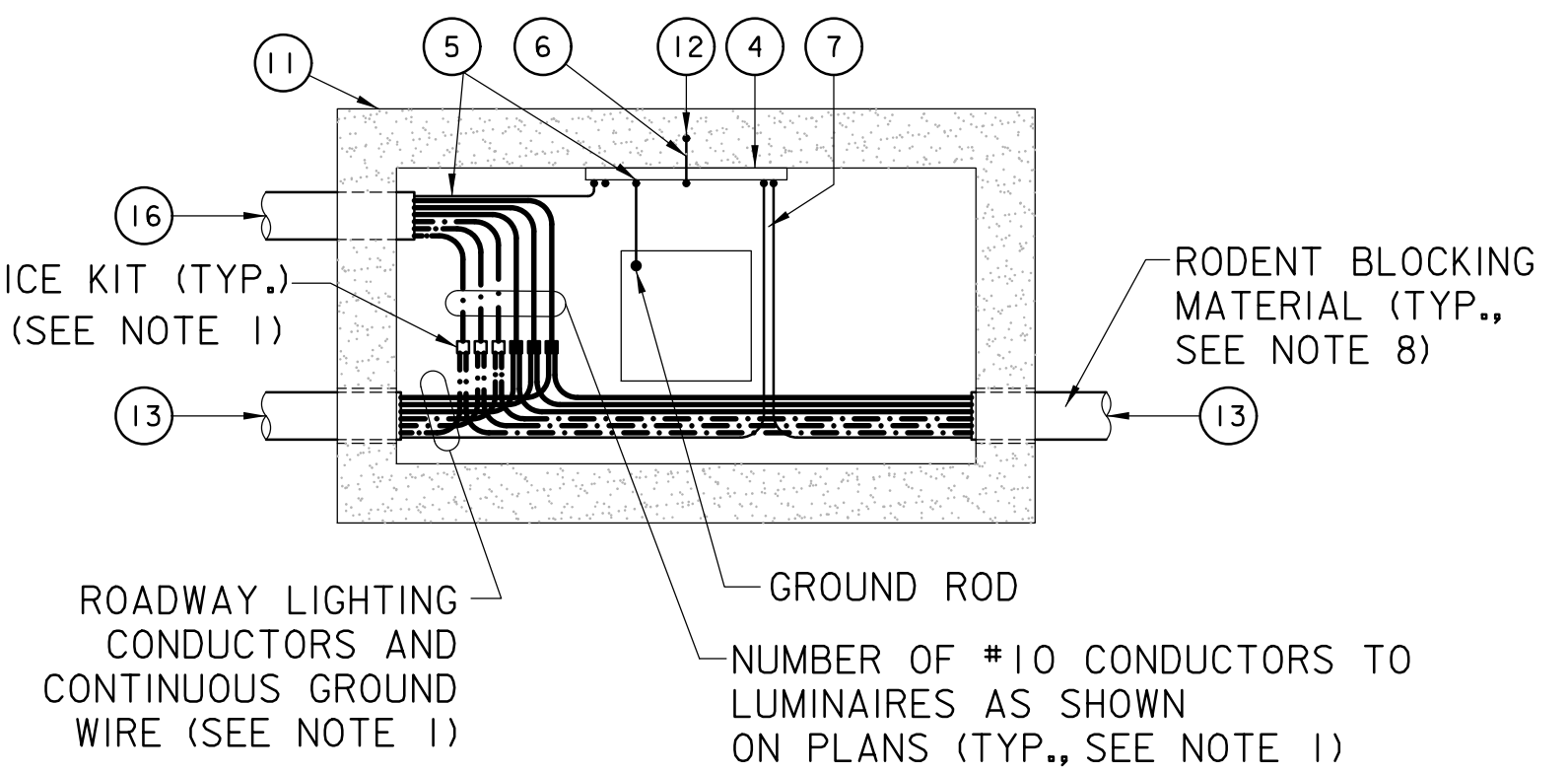


TYPICAL WIRING IN LIGHTING STANDARD WITHOUT TRANSFORMER BASE

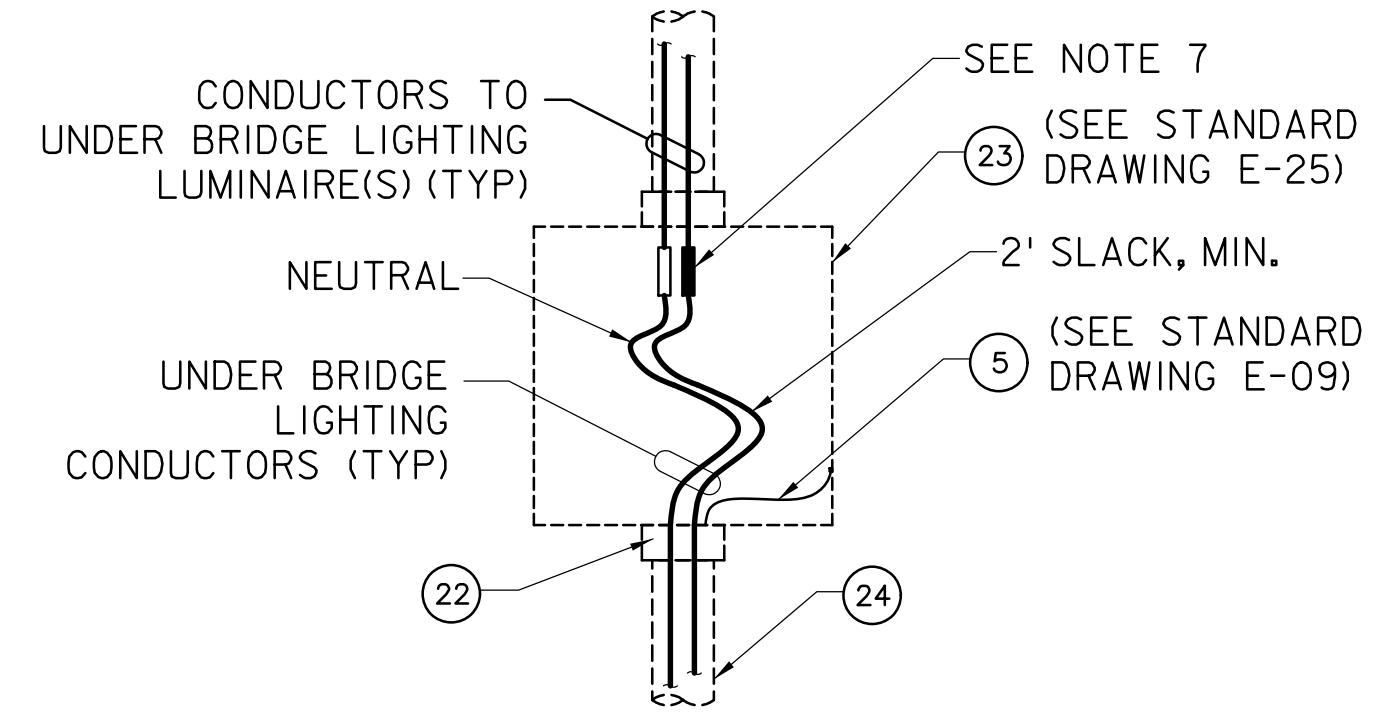
NOT TO SCALE



FOR SINGLE LUMINAIRE LIGHTING STANDARDS

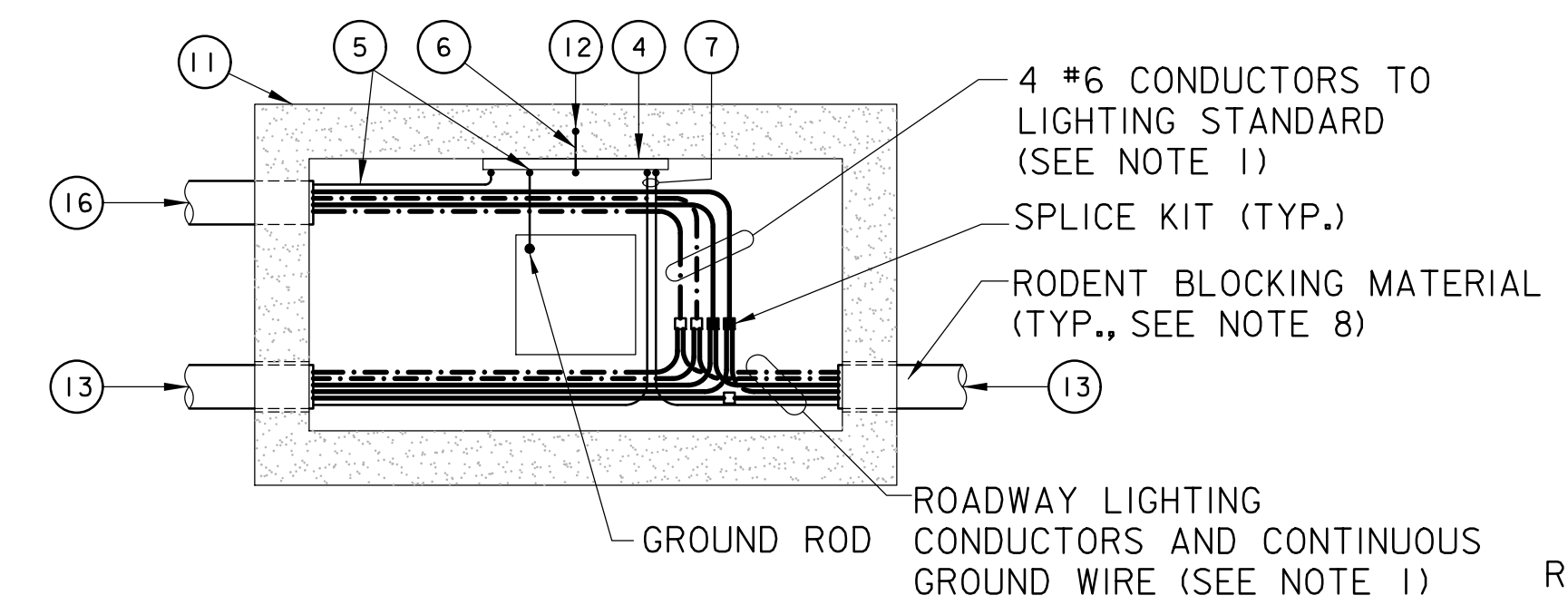


FOR UNDERBRIDGE LIGHTING CIRCUITS

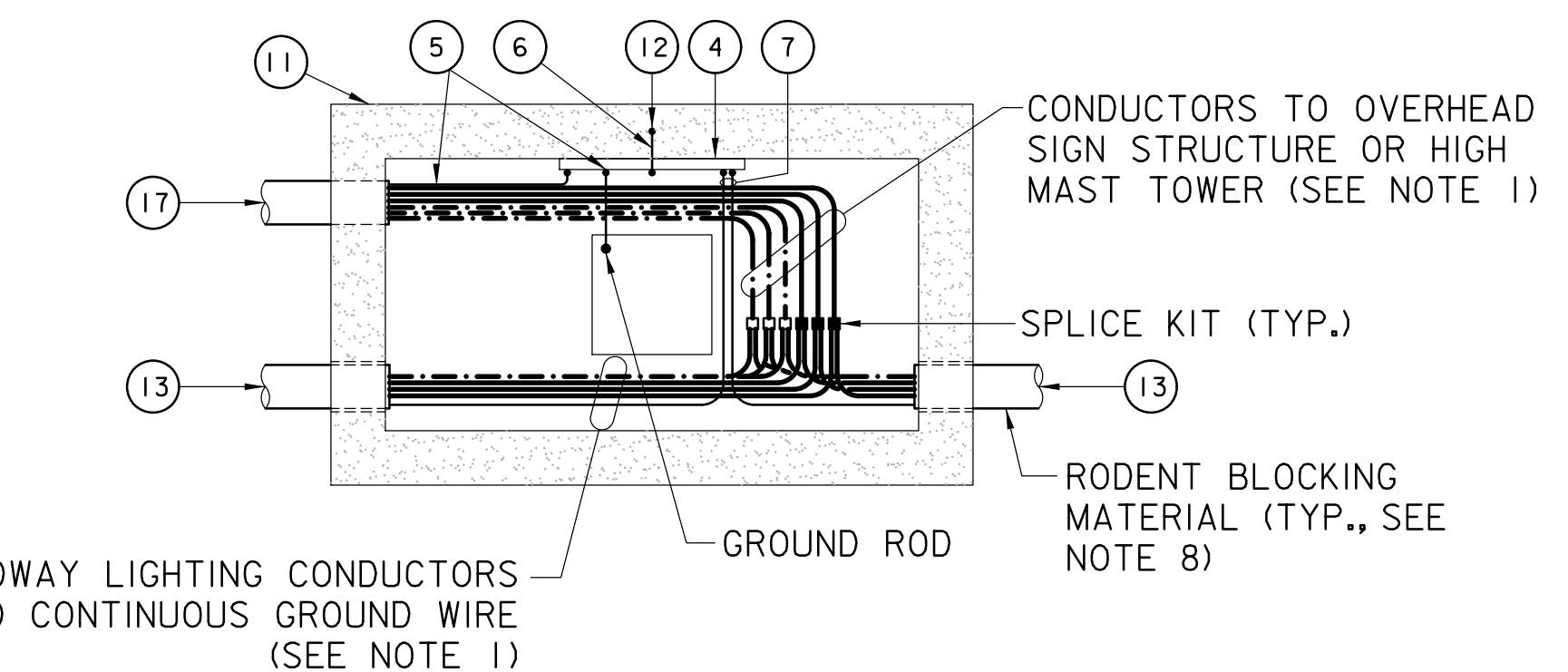


TYPICAL WIRING IN UNDER BRIDGE LIGHTING PULL BOX

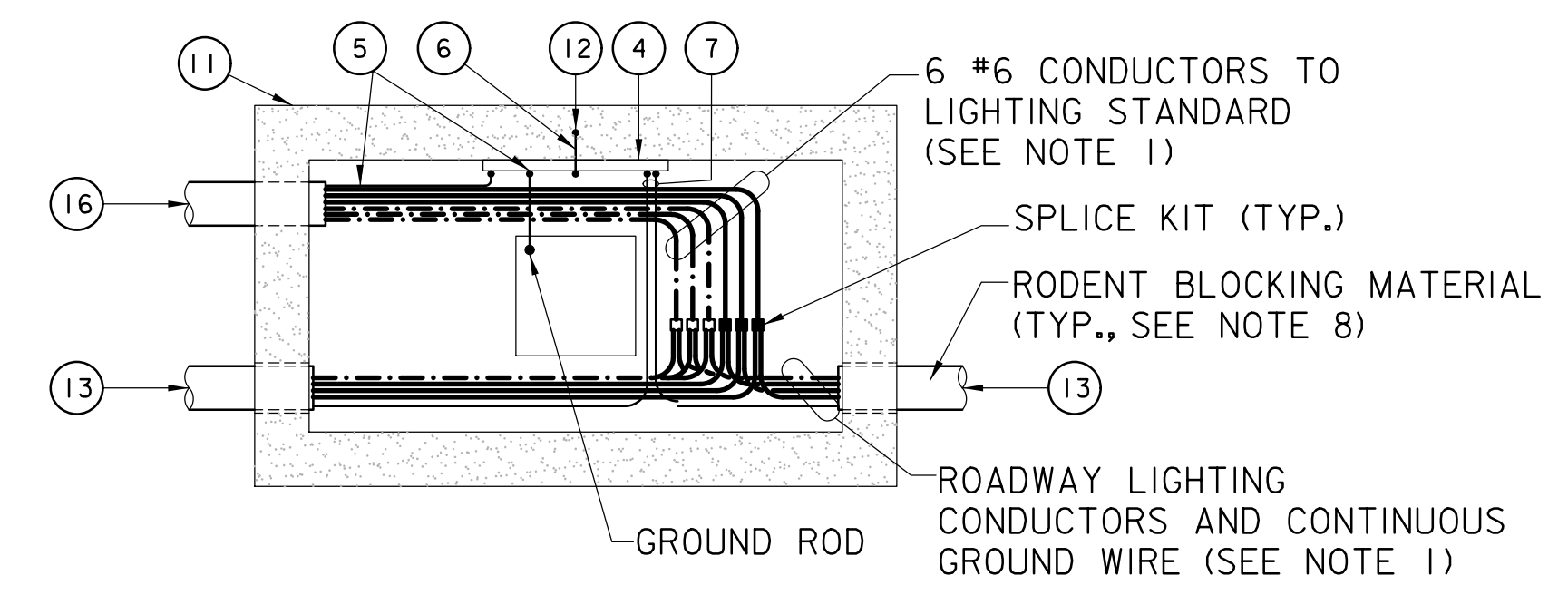
NOT TO SCALE



FOR TWIN LUMINAIRES LIGHTING STANDARDS



FOR FLOOD HIGH MAST AND SIGN LIGHTING CIRCUITS



FOR TRIPLE LUMINAIRES LIGHTING STANDARDS

TYPICAL WIRING IN JUNCTION BOXES AND JUNCTION BOX FOUNDATIONS

NOT TO SCALE

WIRE CONNECTOR NOTES:

- ABBREVIATIONS: (F) - FUSED (NF) - NON-FUSED
- ALL FUSED AND NON-FUSED IN-LINE CONNECTOR KITS SHALL BE "BREAKAWAY" TYPE.
- ALL FUSES SHALL BE 6A, UNLESS OTHERWISE NOTED.
- CRIMP TYPE CONNECTOR KITS SHALL BE USED ONLY FOR LARGE SIZE CABLES WHERE SCREW TERMINAL TYPE CONNECTOR KITS ARE NOT AVAILABLE.

SCHEDULE OF CABLE CONNECTORS

- (SEE SPECIFICATIONS FOR CONNECTOR KIT)
- IN-LINE CONNECTOR KIT (F)
 - IN-LINE CONNECTOR KIT (NF)

SCHEDULE OF WIRE SPLICE KITS

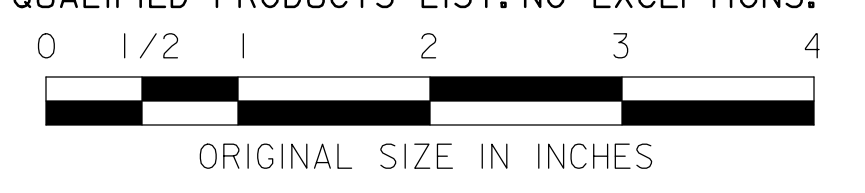
- (SEE SPECIFICATIONS FOR RESIN ENCAPSULATED SPLICE KIT)
- WYE KIT (PHASE CONDUCTORS)
 - WYE KIT (NEUTRAL CONDUCTORS)

LEGEND:

- NEUTRAL WIRE DESIGNATION (TYP.)
- LIGHTING STANDARD TRANSFORMER BASE
- GROUNDING (SEE STANDARD DWG. E-09)
- 12"x 1"x 3/8" GROUNDING BUS BAR
- NO.8 GROUND WIRE
- NO.10 GROUND WIRE
- COPPER GROUND WIRE (SIZE AS NOTED ON THE PLANS)
- LIGHTING STANDARD BASE, TYPE LP
- JUNCTION BOX/JUNCTION BOX FOUNDATION
- JUNCTION BOX FRAME GROUNDING
- 3" NONMETALLIC CONDUIT
- 3" NONMETALLIC CONDUIT TO LIGHTING STANDARD
- 3" NONMETALLIC CONDUIT TO MISCELLANEOUS FACILITIES
- STAINLESS STEEL LIGHTING STANDARD
- BASE PLATE
- PARAPET
- FLUSH HANDHOLE
- RODENT BLOCKING MATERIAL (SEE NOTE 8)
- 8"x8"x6" NEMA 4X S.S. PULL BOX
- PVC-COATED RMC (SIZE AS NOTED ON THE PLANS)

NOTES

- NUMBER AND SIZE OF CONDUCTORS ARE SHOWN ON PLANS. NOT ALL NEUTRAL CONDUCTORS AND SPLICE KITS SHOWN FOR CLARITY. ALL BRANCH CIRCUIT PHASE CONDUCTORS SHALL HAVE A DEDICATED NEUTRAL CONDUCTOR.
- SIMILAR GROUNDING SHALL BE INSTALLED AT ALL LIGHTING STANDARDS WHICH ARE NOT ADJACENT TO A JUNCTION BOX OR MANHOLE.
- CONDUITS SHOWN REFER TO TYPICAL INSTALLATIONS. OTHER TYPES AND SIZES SHALL BE AS NOTED ON THE PLANS.
- WIRING IN ROADWAY LIGHTING MANHOLES SHALL BE SIMILAR TO TYPICAL WIRING SHOWN FOR JUNCTION BOXES.
- WIRING FOR LIGHTING STANDARDS INSTALLED ON JUNCTION BOX FOUNDATIONS AND BRIDGE PARAPETS SHALL BE IN ACCORDANCE WITH APPLICABLE DETAILS SHOWN ON THIS DRAWING.
- WIRING AS SHOWN IS DIAGRAMMATIC. SUFFICIENT SLACK OF CONDUCTORS SHALL BE PROVIDED BY LOOPING THE CONDUCTORS IN EACH TRANSFORMER BASE, JUNCTION BOX AND MANHOLE.
- FUSE SHALL BE ACCESSIBLE FROM THE HANDHOLE OR TRANSFORMER BASE. CONDUCTORS SHALL HAVE A MINIMUM OF TREE (3) FEET OF SLACK FOR MAINTENANCE PURPOSE.
- ALL OPEN CONDUIT TERMINATIONS SHALL HAVE RODENT BLOCKING MATERIAL. SEE STANDARD DRAWING E-16.
- ALL SPLICE CONNECTIONS IN UNDERGROUND JUNCTION BOXES, MANHOLES, AND JUNCTION BOX FOUNDATIONS SHALL BE RESIN ENCAPSULATED SPLICE KITS. SEE SPECIFICATIONS AND QUALIFIED PRODUCTS LIST FOR DETAILS.
- ALL MULTIPLE LIGHTING AND POWER CABLES SHALL COMPLY WITH THE SPECIFICATIONS AND QUALIFIED PRODUCTS LIST. NO EXCEPTIONS.



NEW JERSEY TURNPIKE AUTHORITY
NEW JERSEY TURNPIKE GARDEN STATE PARKWAY
 STANDARD DRAWINGS

ROADWAY LIGHTING INSTALLATION DETAILS - 3

OFFICE OF THE CHIEF ENGINEER
 NEW JERSEY TURNPIKE AUTHORITY
 WOODBRIDGE, NEW JERSEY

STANDARD DRAWING
E-20

REV.	DESCRIPTION	DATE
0	REISSUED DRAWING	09/21