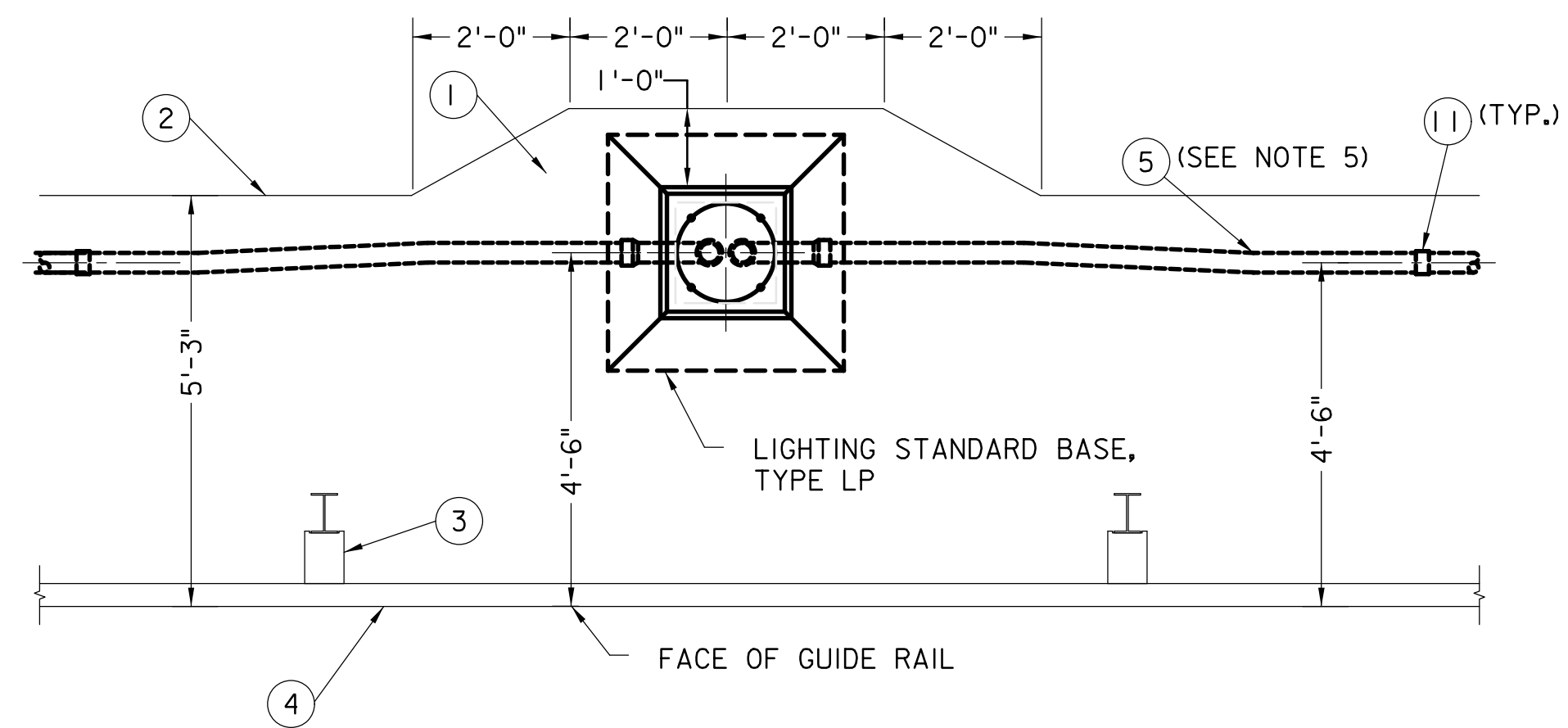
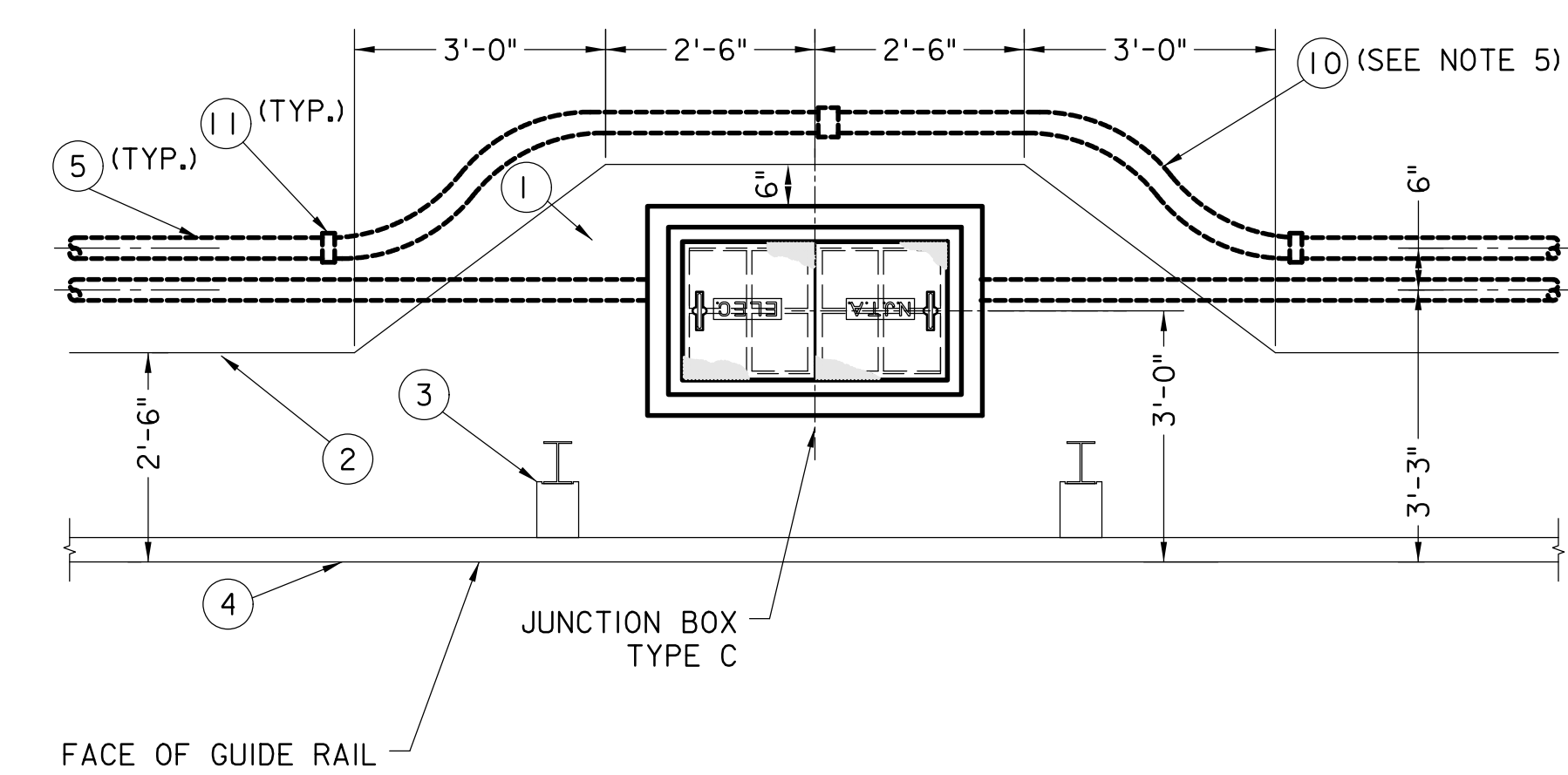


**PLAN WITHOUT GUIDE RAIL
(THROUGH CONDUIT INSTALLATION)**



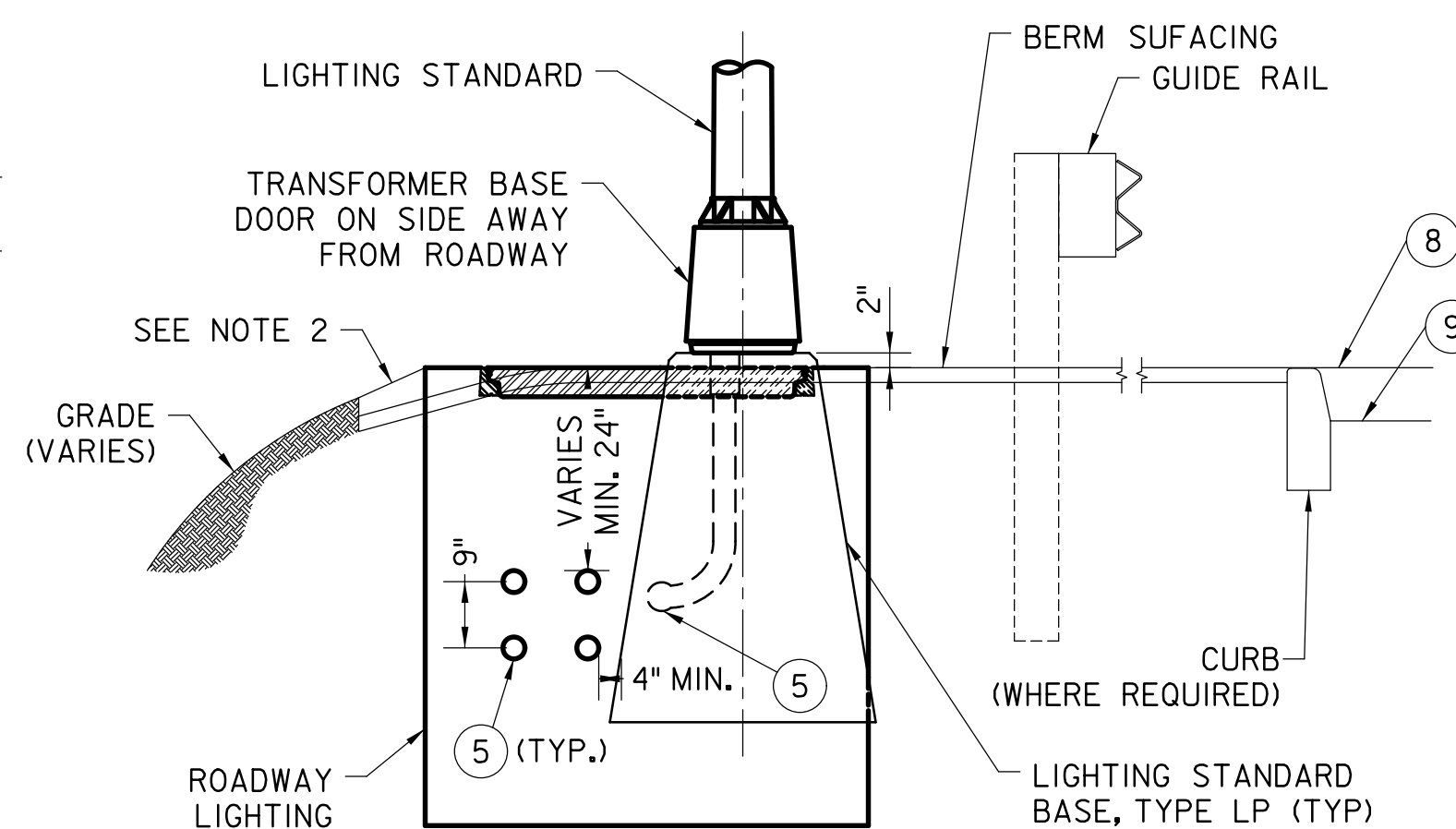
**PLAN WITH GUIDE RAIL
(THROUGH CONDUIT INSTALLATION)**



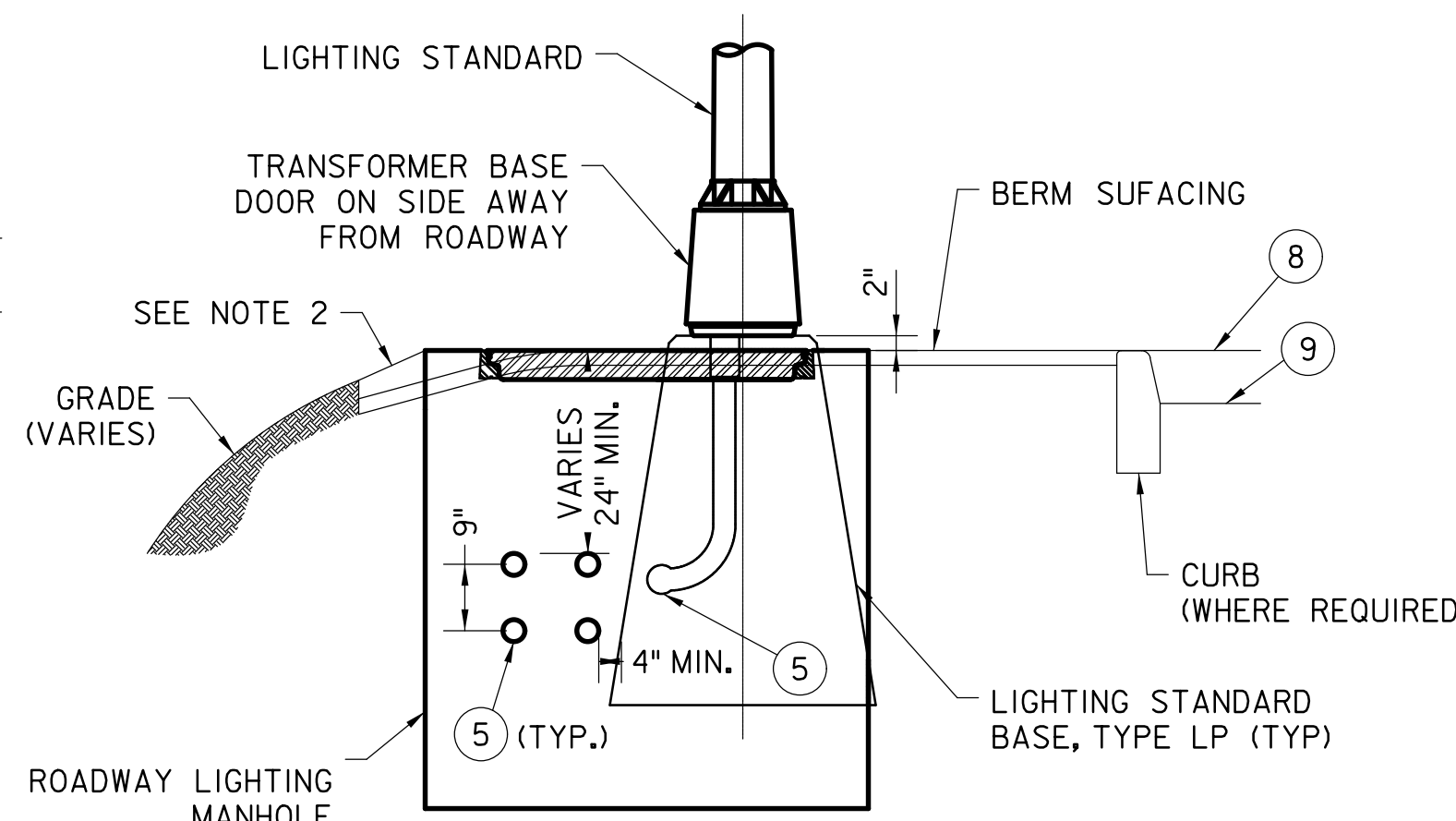
**PLAN WITH GUIDE RAIL
(JUNCTION BOX AND THROUGH CONDUIT INSTALLATION)**

**TYPICAL PASS THROUGH CONDUIT
INSTALLATION DETAILS**

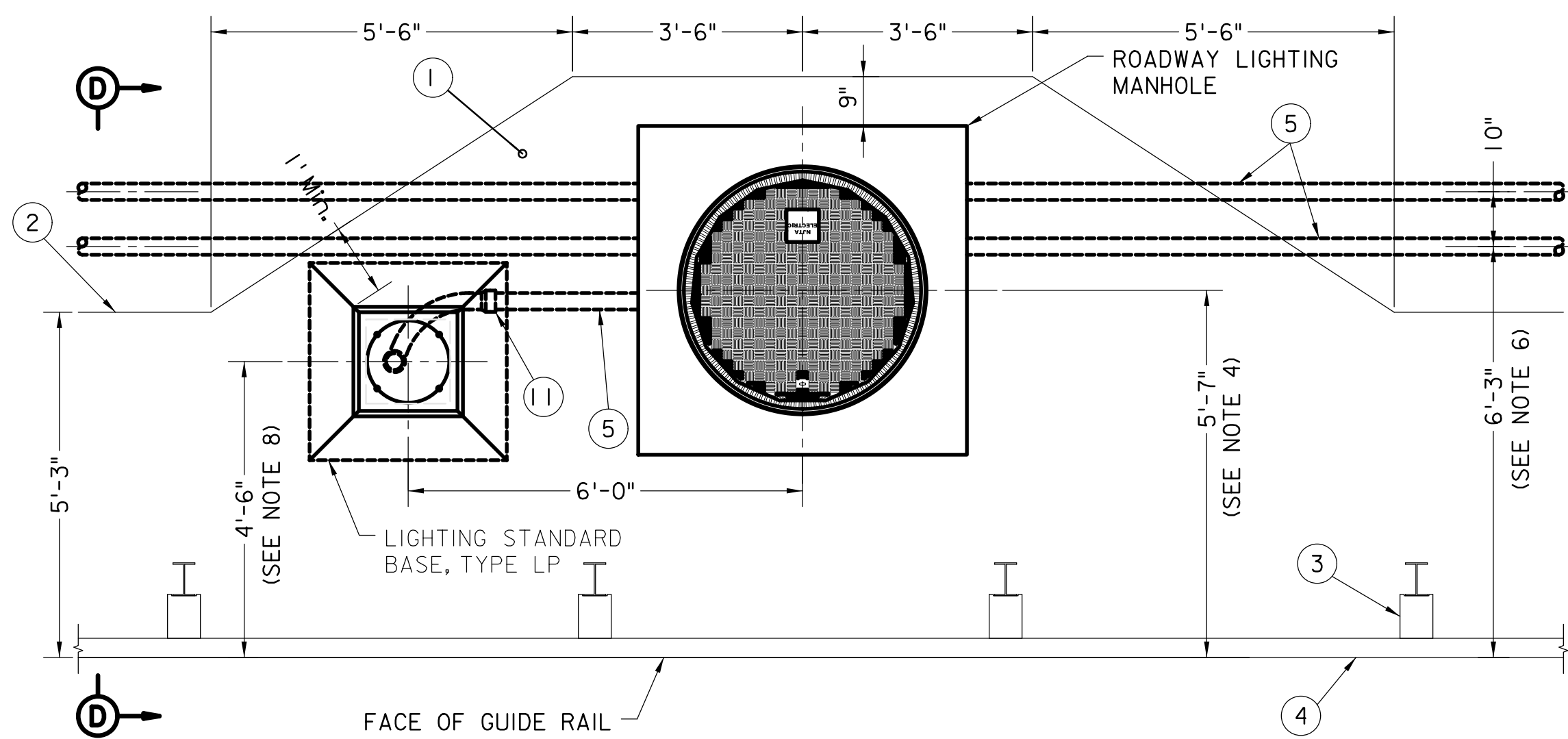
SCALE: 1/2" = 1'-0"



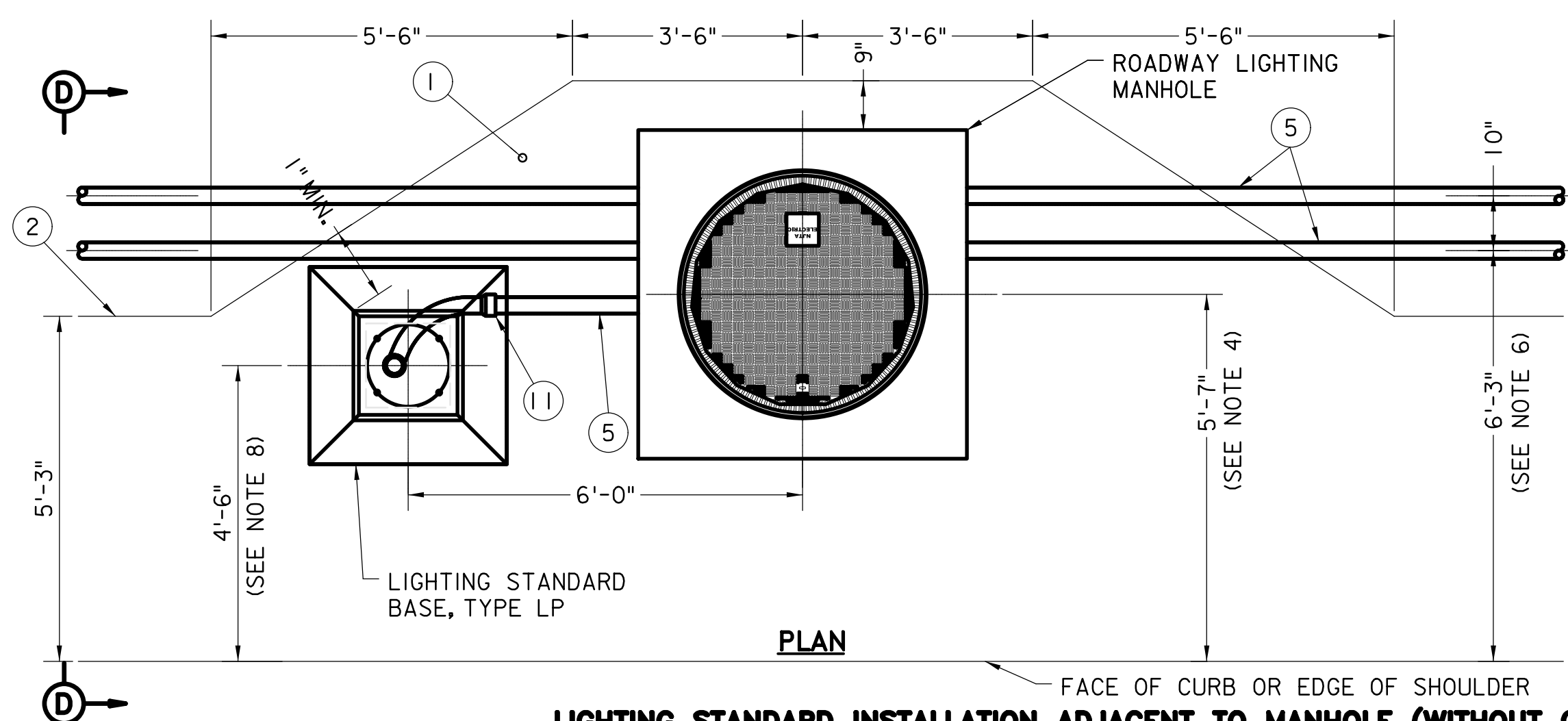
SECTION D-D



SECTION E-E



**PLAN
LIGHTING STANDARD INSTALLATION ADJACENT TO MANHOLE (WITH GUIDE RAIL)**



**PLAN
LIGHTING STANDARD INSTALLATION ADJACENT TO MANHOLE (WITHOUT GUIDE RAIL)**

**TYPICAL LIGHTING STANDARD AND MANHOLE
INSTALLATION DETAILS**

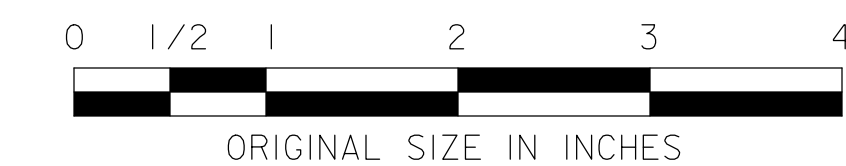
SCALE: 1/2" = 1'-0"

NOTES

- TYPICAL INSTALLATIONS SHOWN ON THIS DRAWING REFER TO AREAS WITH GUIDE RAIL AND BERM SURFACING. INSTALLATIONS IN OTHER AREAS SHALL BE SIMILAR, UNLESS OTHERWISE NOTED ON THE CONTRACT PLANS AND/OR DIRECTED BY THE ENGINEER.
- UNLESS OTHERWISE NOTED ON THE CONTRACT PLANS & SPECIFICATIONS THE AREA AROUND LIGHTING STANDARD BASES, CONCRETE JUNCTION BOXES AND MANHOLES SHALL BE GRADED AND ADDITIONAL BERM SURFACING PROVIDED BY THE CONTRACTOR. THE DESIGNER SHALL REVIEW THE EXISTING AND PROPOSED GRADING AND SPECIFY EROSION CONTROL FOR ANY JUNCTION BOX OR FOUNDATION TO BE INSTALLED ON A SLOPE GREATER THAN 4:1.
- WHERE GUIDE RAIL IS PRESENT, ALL SETBACK DIMENSIONS SHALL REFERENCE FROM FACE OF GUIDE RAIL. WHERE CURB IS PRESENT, ALL SETBACK DIMENSIONS SHALL REFERENCE FROM FACE OF CURB. IN THE ABSENCE OF CURB OR GUIDE RAIL, ALL SETBACK DIMENSIONS SHALL REFERENCE FROM EDGE OF PAVED SHOULDER.
- MANHOLE CENTERLINE SETBACK SHOWN FOR ONE (1) TO FOUR (4) CONDUITS. WHERE MORE CONDUITS ARE REQUIRED, THE MANHOLE SETBACK SHALL INCREASE IN 6" INCREMENTS AS REQUIRED TO ACCOMMODATE THE NUMBER OF CONDUITS.
- CONDUIT OFFSET BEND SHALL BE RIGID NONMETALLIC WHERE THE DISTANCE BETWEEN GUIDE RAIL POST AND LIGHTING STANDARD BASE IS LESS THAN 5'-0".
- CONDUIT SETBACK SHOWN FOR ONE (1) TO FOUR (4) CONDUITS. WHERE MORE CONDUITS ARE REQUIRED, THE CONDUIT SETBACK NEAREST THE ROADWAY SHALL REMAIN CONSTANT. ADDITIONAL CONDUITS SHALL BE INSTALLED AWAY FROM THE ROADWAY, SPACED AS SHOWN.
- PLACEMENT OF CONCRETE JUNCTION BOXES AND ROADWAY LIGHTING MANHOLES WHICH ARE NOT ADJACENT TO A LIGHTING STANDARD SHALL CONFORM TO THE APPLICABLE DETAILS SHOWN.
- LIGHTING STANDARD BASE SETBACK SHALL BE AS SHOWN IN THIS DETAIL, UNLESS OTHERWISE NOTED ON THE PLANS. LIGHTING STANDARD BASES SHALL BE PLACED AT MIDPOINT BETWEEN GUIDE RAIL POSTS, WHEREVER FEASIBLE.
- ASPHALT LIP CURBS ARE NOT SHOWN.
- ALL OPEN CONDUIT TERMINATIONS SHALL HAVE RODENT BLOCKING MATERIAL. SEE STANDARD DRAWING E-16.

LEGEND

- ① ADDITIONAL BERM SURFACING (SEE NOTES 1 & 2)
- ② EDGE OF BERM SURFACING
- ③ GUIDE RAIL POST AND BRACKET(S)
- ④ GUIDE RAIL ELEMENT(S)
- ⑤ 3" RIGID NONMETALLIC CONDUIT(S) (TYP), SIZE AND TYPE AS SHOWN ON THE PLANS
- ⑦ 3" RIGID NONMETALLIC CONDUIT BEND WITH 12" MIN. RADIUS
- ⑧ TOP OF SHOULDER ON ROADWAYS WITHOUT CURB
- ⑨ TOP OF SHOULDER ON ROADWAYS WITH CURB
- ⑩ CONDUIT OFFSET BEND WITH 36" RAD, 20" MIN. OFFSET AND 6'-6" MIN LENGTH. 3" SIZE (TYP) OR 2" SIZE (WHERE REQ'D), NONMETALLIC OR RIGID METALLIC, AS SHOWN ON THE PLANS
- ⑪ CONDUIT COUPLING



**NEW JERSEY TURNPIKE AUTHORITY
NEW JERSEY TURNPIKE
GARDEN STATE PARKWAY**

STANDARD DRAWINGS

**ROADWAY LIGHTING
INSTALLATION DETAILS - 2**

OFFICE OF THE CHIEF ENGINEER
NEW JERSEY TURNPIKE AUTHORITY
WOODBURGE, NEW JERSEY

STANDARD DRAWING

REV.	DESCRIPTION	DATE
0	REISSUED DRAWING	09/21

E-19