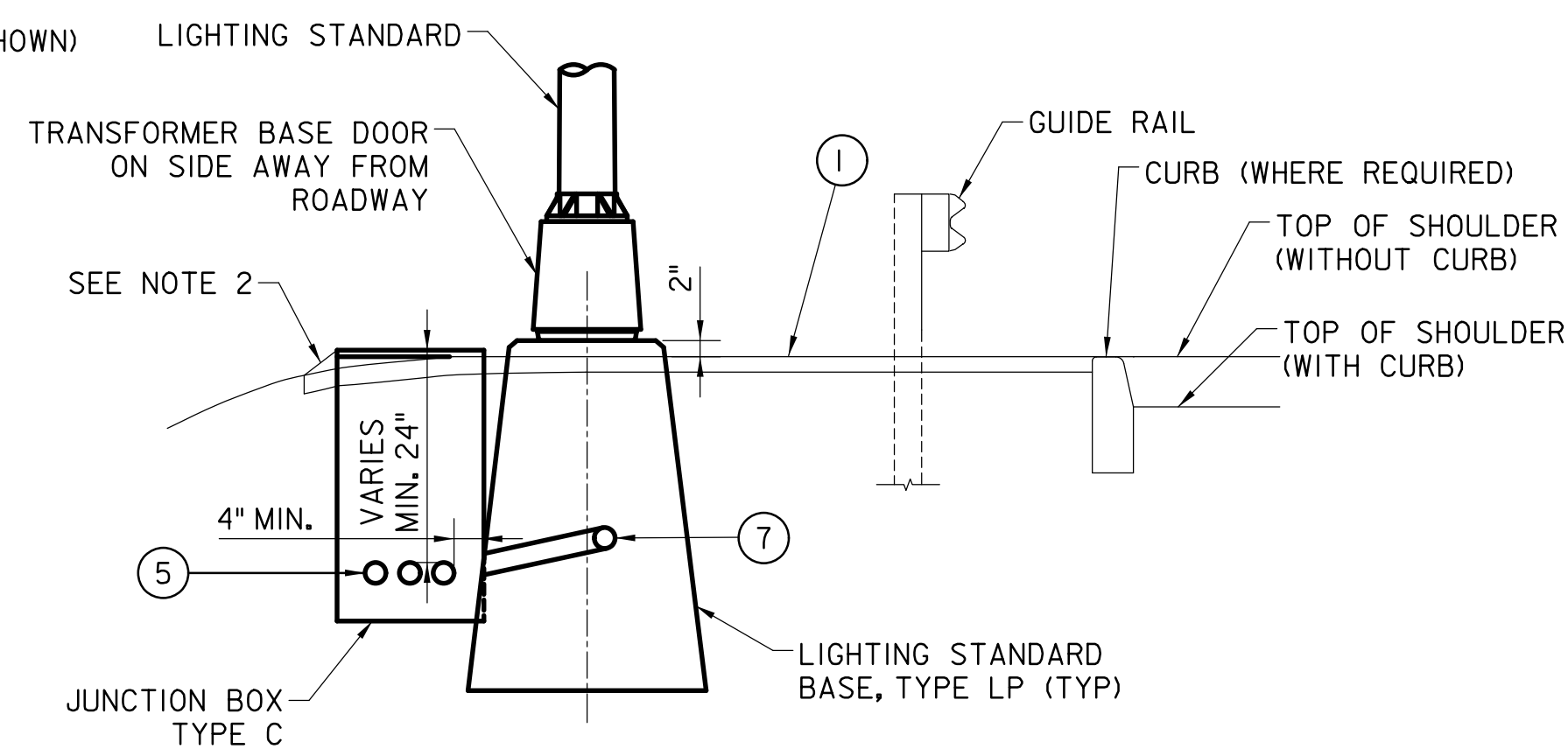
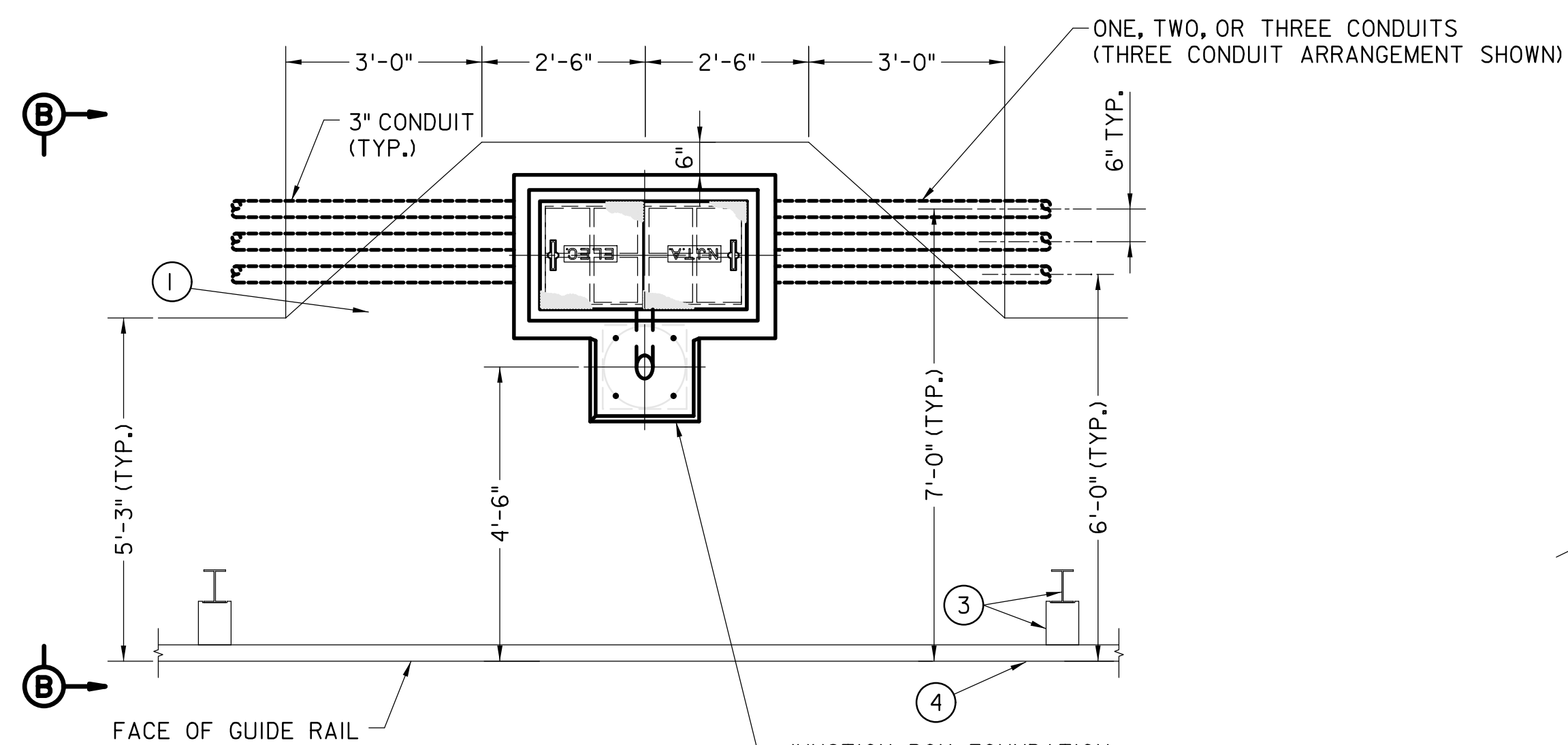


PLAN

INSTALLATION FOR ONE, TWO, OR THREE CONDUIT RACEWAYS (WITH GUIDE RAIL)

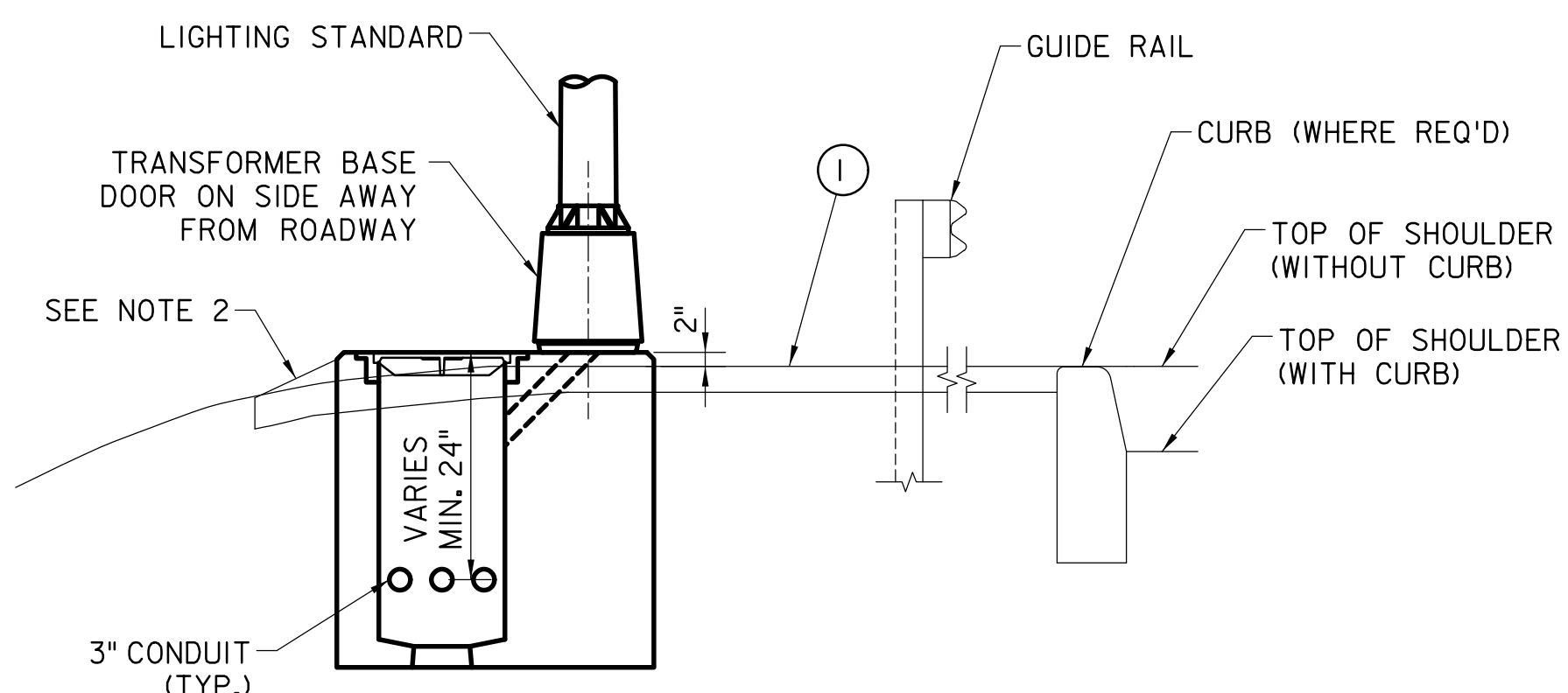


SECTION A-A

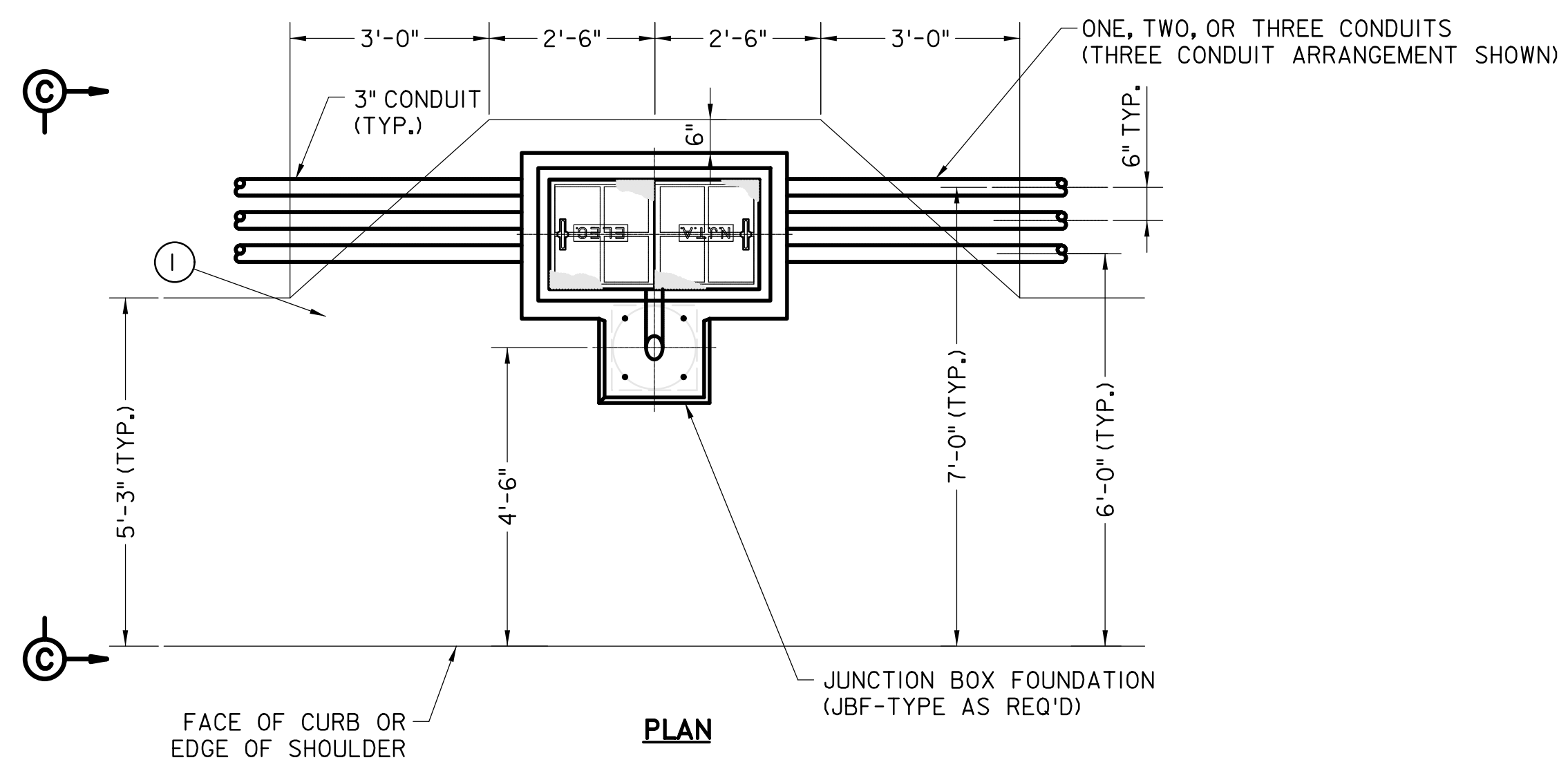


PLAN

INSTALLATION OF J.B.F. WITH ONE, TWO OR THREE CONDUIT RACEWAY(S) (WITH GUIDERAIL)

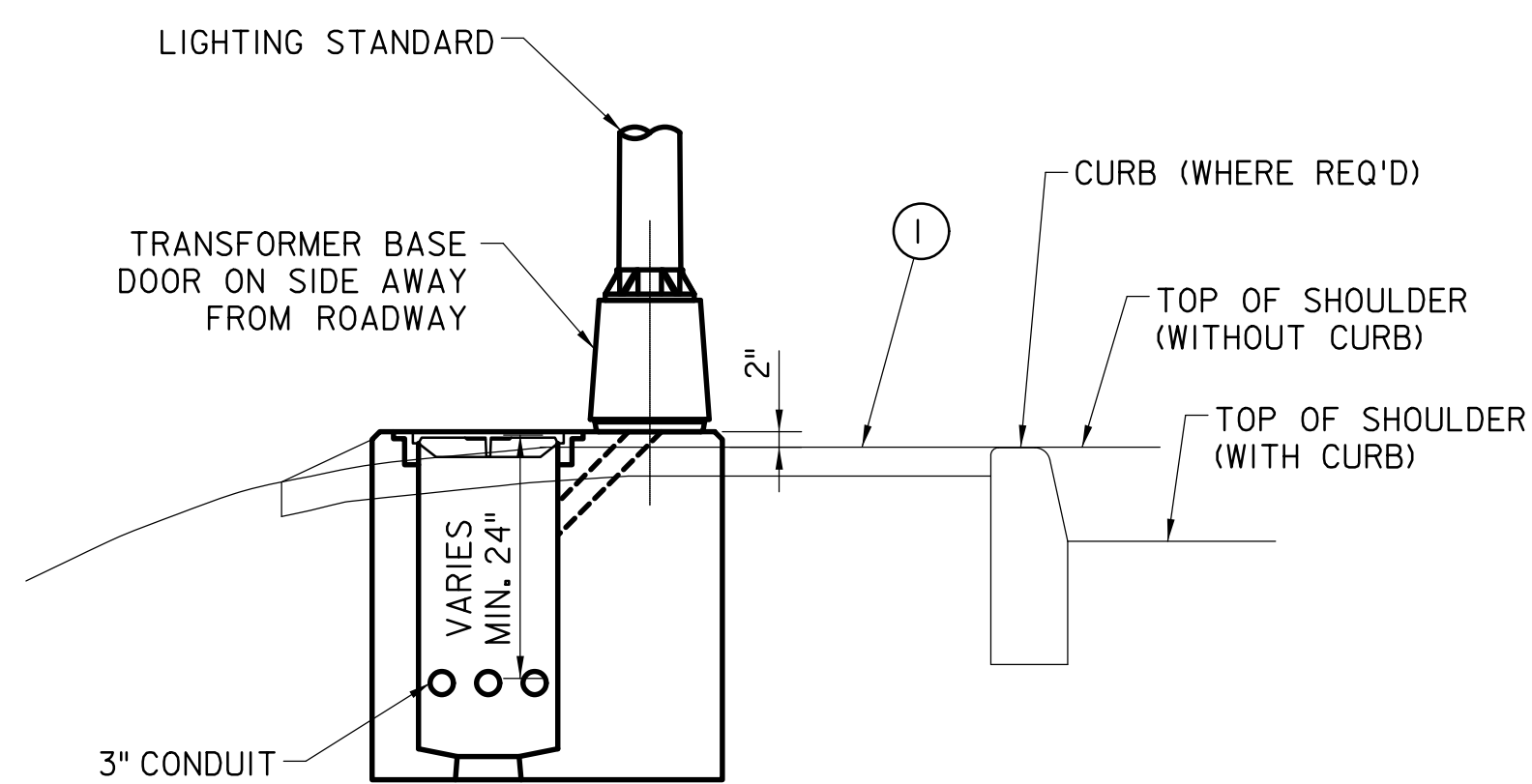


SECTION B-B



PLAN

INSTALLATION OF J.B.F. WITH ONE, TWO OR THREE CONDUIT RACEWAY(S) (NO GUIDE RAIL)



SECTION C-C

TYPICAL LIGHTING STANDARD AND CONCRETE JUNCTION BOX INSTALLATION DETAILS

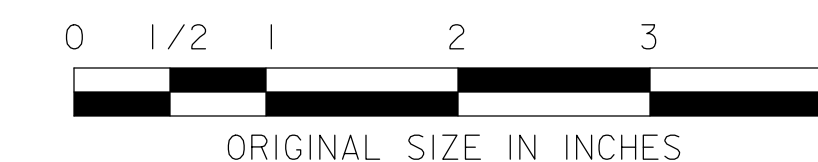
Scale: 1/2" = 1'-0"

NOTES

1. TYPICAL INSTALLATIONS SHOWN ON THIS DRAWING REFER TO AREAS WITH GUIDE RAIL AND BERM SURFACING. INSTALLATIONS IN OTHER AREAS SHALL BE SIMILAR, UNLESS OTHERWISE NOTED ON THE CONTRACT PLANS AND/OR DIRECTED BY THE ENGINEER.
2. UNLESS OTHERWISE NOTED ON THE CONTRACT PLANS & SPECIFICATIONS THE AREA AROUND LIGHTING STANDARD BASES, CONCRETE JUNCTION BOXES AND MANHOLES SHALL BE GRADED AND ADDITIONAL BERM SURFACING PROVIDED BY THE CONTRACTOR. THE DESIGNER SHALL REVIEW THE EXISTING AND PROPOSED GRADING AND SPECIFY EROSION CONTROL FOR ANY JUNCTION BOX OR FOUNDATION TO BE INSTALLED ON A SLOPE GREATER THAN 4:1.
3. PLACEMENT OF CONCRETE JUNCTION BOXES AND ROADWAY LIGHTING MANHOLES WHICH ARE NOT ADJACENT TO A LIGHTING STANDARD SHALL CONFORM TO THE APPLICABLE DETAILS SHOWN.
4. LIGHTING STANDARD BASES SHALL BE PLACED AT MIDPOINT BETWEEN GUIDE RAIL POSTS, WHEREVER FEASIBLE.
5. ASPHALT LIP CURBS ARE NOT SHOWN.
6. ALL OPEN CONDUIT TERMINATIONS SHALL HAVE RODENT BLOCKING MATERIAL. SEE STANDARD DRAWING E-16.
7. WHERE GUIDE RAIL IS PRESENT, ALL SETBACK DIMENSIONS SHALL REFERENCE FROM FACE OF GUIDE RAIL. WHERE CURB IS PRESENT, ALL SETBACK DIMENSIONS SHALL REFERENCE FROM FACE OF CURB. IN THE ABSENCE OF CURB OR GUIDE RAIL, ALL SETBACK DIMENSIONS SHALL REFERENCE FROM EDGE OF PAVED SHOULDER.
8. SETBACK FROM FACE OF GUIDE RAIL SHOWN FOR ONE (1) TO FOUR (4) CONDUITS. WHERE MORE CONDUITS ARE REQUIRED, THE CONDUIT SETBACK NEAREST THE ROADWAY SHALL REMAIN CONSTANT. ADDITIONAL CONDUITS SHALL BE INSTALLED AWAY FROM THE ROADWAY, SPACED AS SHOWN.
9. PLACEMENT OF CONCRETE JUNCTION BOXES AND ROADWAY LIGHTING MANHOLES WHICH ARE NOT ADJACENT TO A LIGHTING STANDARD SHALL CONFORM TO THE APPLICABLE DETAILS SHOWN.
10. LIGHTING STANDARD BASE SETBACK SHALL BE AS SHOWN IN THIS DETAIL, UNLESS OTHERWISE NOTED ON THE PLANS. LIGHTING STANDARD BASES SHALL BE PLACED AT MIDPOINT BETWEEN GUIDE RAIL POSTS, WHEREVER FEASIBLE.

LEGEND

- ① ADDITIONAL BERM SURFACING (SEE NOTES 1 & 2)
- ② EDGE OF BERM SURFACING
- ③ GUIDE RAIL POST AND BRACKET(S)
- ④ GUIDE RAIL ELEMENT(S)
- ⑤ 3" RIGID NONMETALLIC CONDUIT(S) (TYP.), SIZE AND TYPE AS SHOWN ON THE PLANS
- ⑦ 3" RIGID NONMETALLIC CONDUIT BEND WITH 12" MIN. RADIUS



NEW JERSEY TURNPIKE AUTHORITY
**NEW JERSEY TURNPIKE
 GARDEN STATE PARKWAY**

STANDARD DRAWINGS

ROADWAY LIGHTING
 INSTALLATION DETAILS - 1

OFFICE OF THE CHIEF ENGINEER
 NEW JERSEY TURNPIKE AUTHORITY
 WOODBRIDGE, NEW JERSEY

STANDARD DRAWING

| REV. | DESCRIPTION | DATE |
|------|------------------|-------|
| 0 | REISSUED DRAWING | 09/21 |

E-18