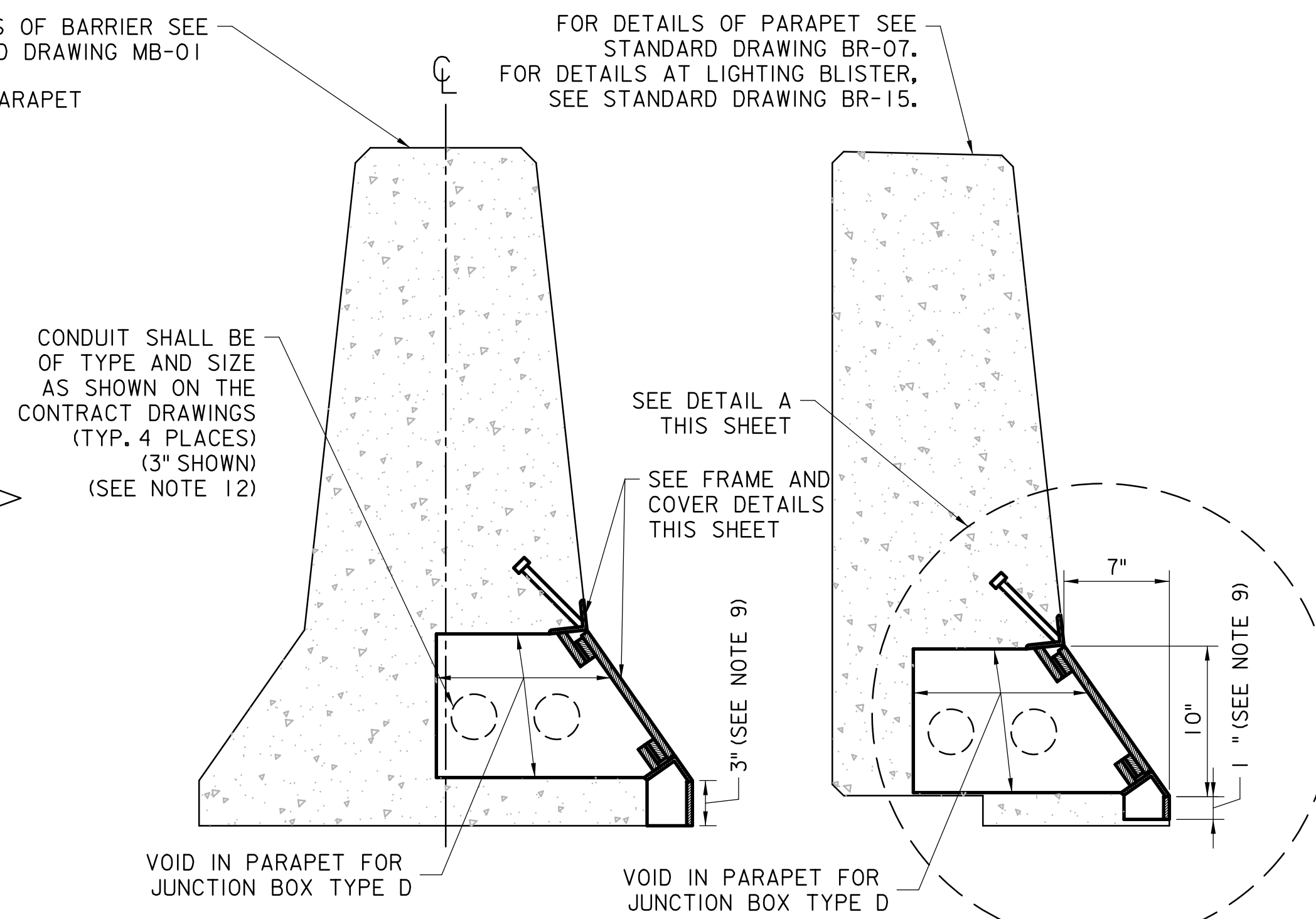
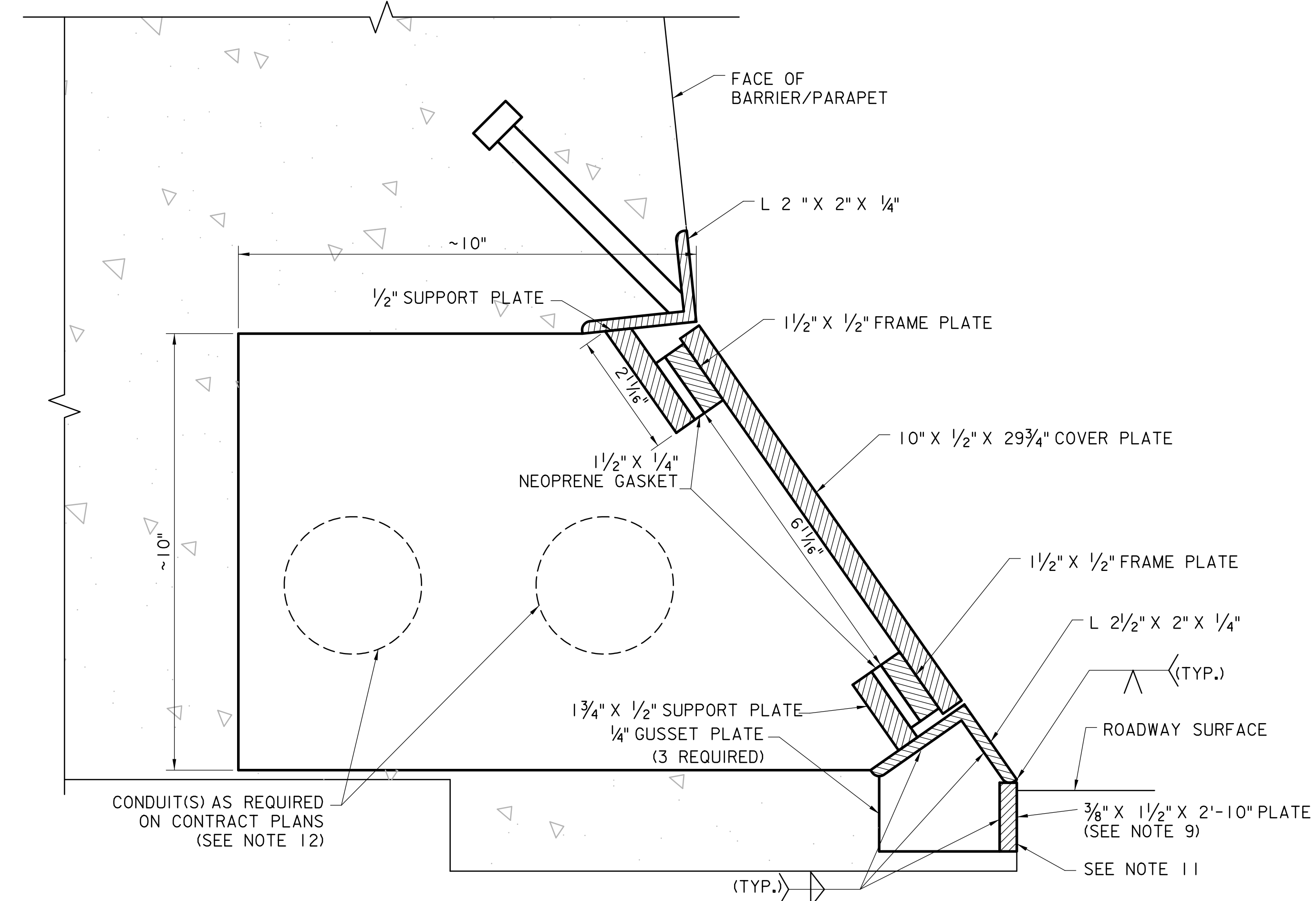


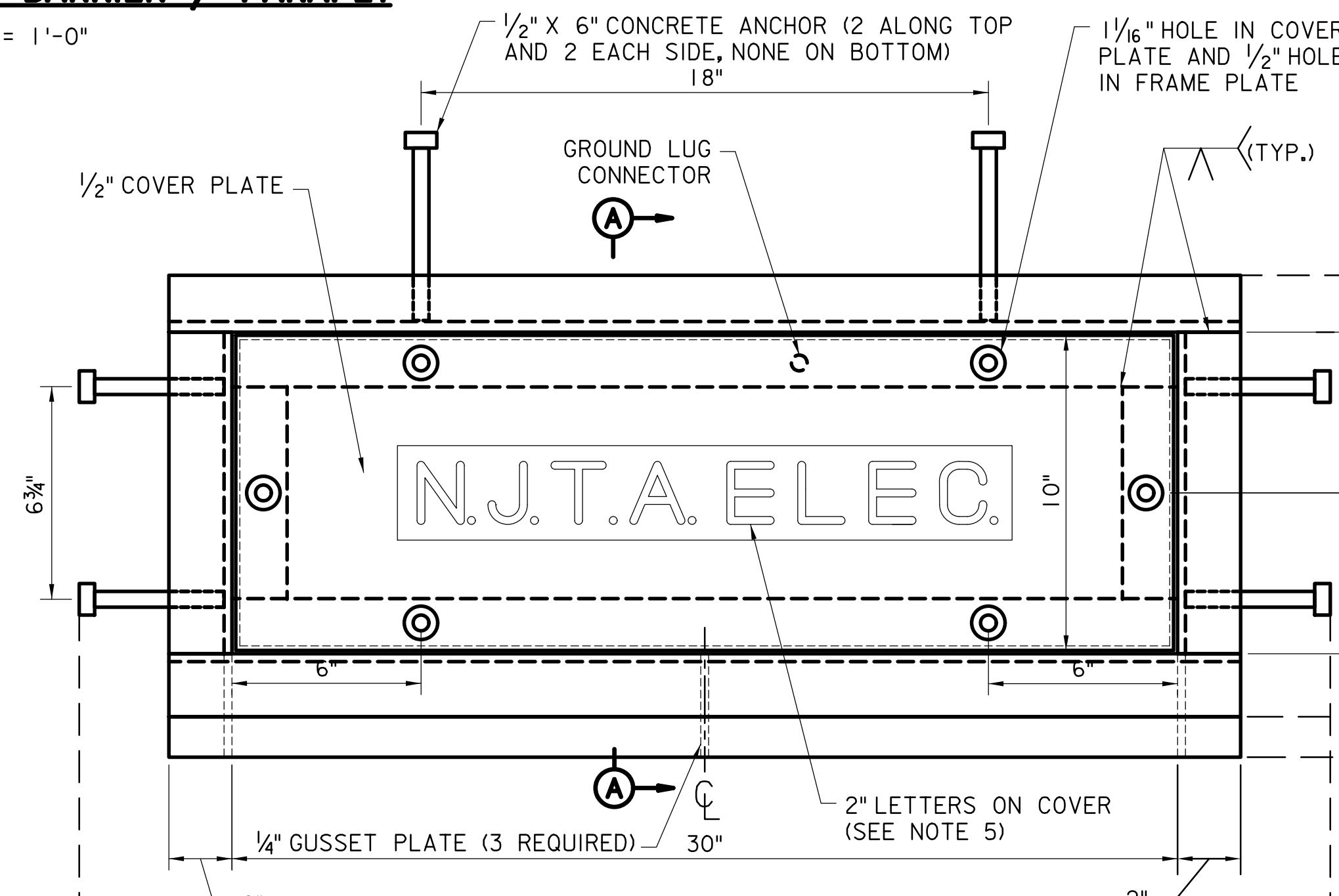
**ELEVATION - MEDIAN BARRIER**  
SCALE: 1 1/2" = 1'-0"



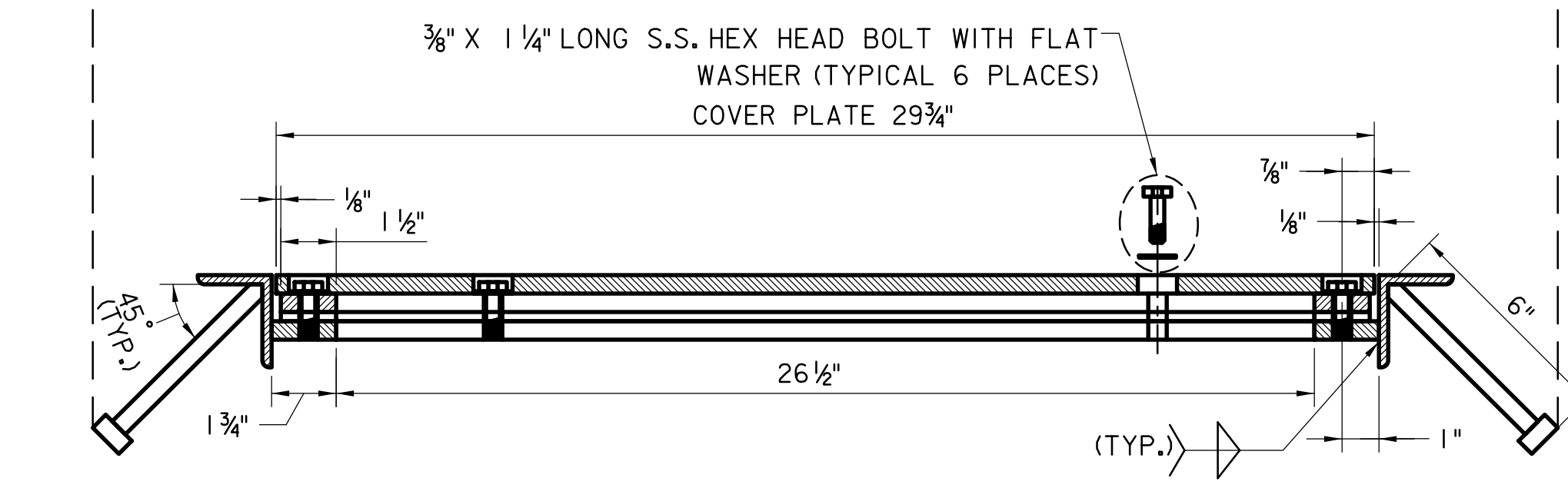
**SECTION B-B - MEDIAN BARRIER / PARAPET**  
SCALE: 1 1/2" = 1'-0"



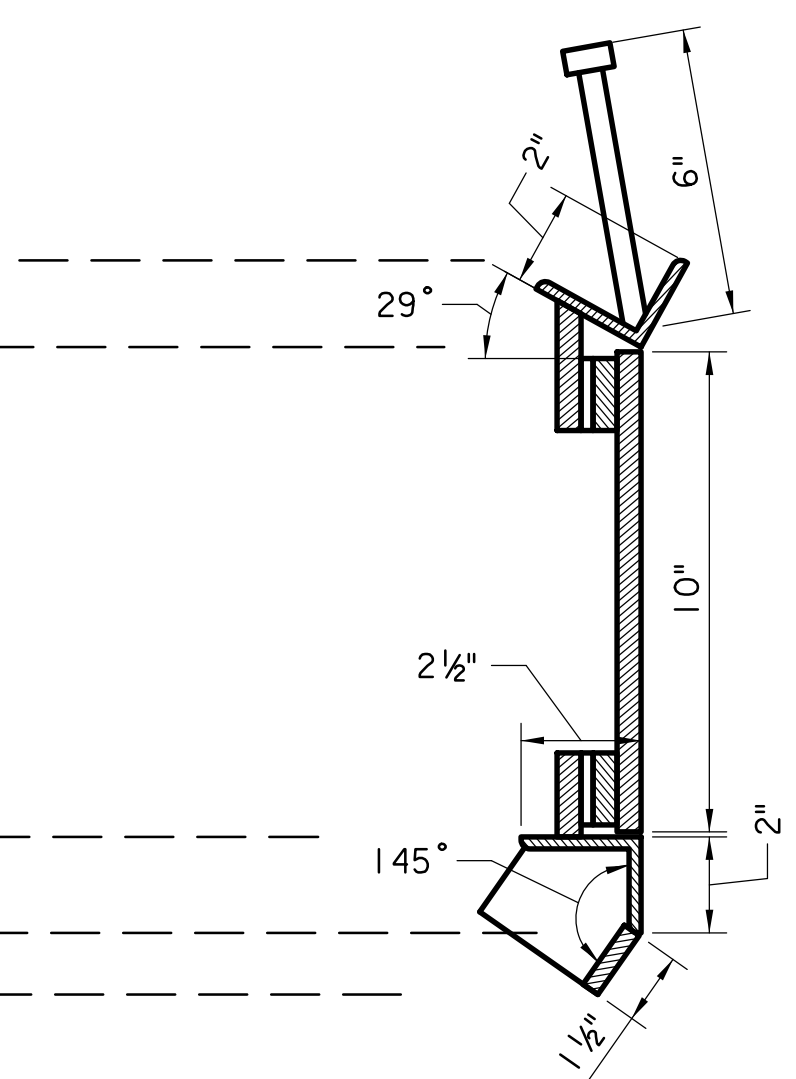
**PARAPET - DETAIL A**  
SCALE: 6" = 1'-0"  
(SEE NOTES 9 AND 10)



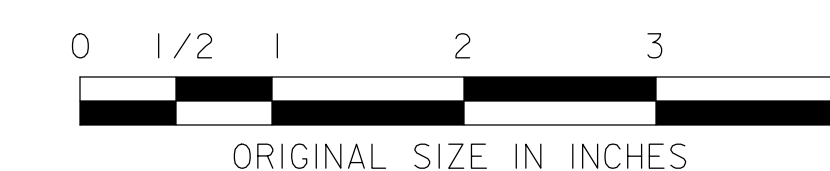
**PLAN - FRAME AND COVER**  
SCALE: 3" = 1'-0"



**ELEVATION - FRAME AND COVER**  
SCALE: 3" = 1'-0"



**SECTION A-A - FRAME AND COVER**  
SCALE: 3" = 1'-0"



**NOTES**

- BOLT LOCATIONS SHALL BE SYMMETRICAL ABOUT CENTER LINES (6 BOLTS REQUIRED PER COVER).
- NEOPRENE GASKET SHALL BE A CLOSED CELL, EPDM/SBR/NEOPRENE SPONGE RUBBER MATERIAL WITH A FIRMNESS RATING OF 3. GASKET SHALL BE ATTACHED TO THE FRAME PLATE WITH AN APPROVED ADHESIVE. NEOPRENE GASKET SHALL BE CONTINUOUS AND SINGLE PIECE.
- ALL WELDS SHALL BE 3/16" CONTINUOUS WELDS.
- FRAME AND COVER STRUCTURAL STEEL SHALL BE ASTM A709, GRADE 36 AND SHALL BE HOT DIP GALVANIZED AFTER FABRICATION IN ACCORDANCE WITH ASTM A123.
- THE LETTERS "NJTA" SHALL BE WELDED ON TO THE COVER.
- FRAME AND COVER SHALL BE AS LISTED IN THE QUALIFIED PRODUCTS LIST, OR APPROVED EQUAL.
- UNLESS NOTED OTHERWISE ALL HARDWARE SHALL BE STAINLESS STEEL TYPE 304 IN ACCORDANCE WITH ASTM A193 GRADE B8.
- THE CONTRACTOR SHALL COORDINATE THE INSTALLATION OF THE FRAME AND COVER WITH THE CONSTRUCTION OF PARAPET OR BARRIER. STEEL REINFORCEMENT NOT SHOWN FOR CLARITY.
- THE HEIGHT OF THE BARRIER AND PARAPET FACE DIFFER SLIGHTLY. A 1" RELIEF SHALL BE USED IN PARAPETS AND A 3" RELIEF SHALL BE USED IN ROADWAY MEDIAN BARRIER.
- DETAIL SIMILAR FOR ROADWAY MEDIAN BARRIER INSTALLATION. (SEE NOTE 9)
- HEIGHT OF REVEAL WILL VARY BY ROADWAY.
- ALL OPEN CONDUIT TERMINATIONS SHALL HAVE RODENT BLOCKING MATERIAL. SEE STANDARD DRAWING E-16. CONDUITS ENDING IN TYPE D JUNCTION BOXES SHALL BE INSTALLED WITH CONDUIT END BUSHINGS, BELL ENDS, OR SIMILAR DEVICES TO PREVENT DAMAGE TO CABLES WHEN PULLING.
- JUNCTION BOX COVER SHALL BE BONDED TO FRAME VIA A GROUND WHIP CORD. GROUND WHIP CORD SHALL BE BONDED TO COVER AND REINFORCEMENT AND SHALL BE NO LESS THAN 48" IN LENGTH.

NEW JERSEY TURNPIKE AUTHORITY  
**NEW JERSEY TURNPIKE**  
**GARDEN STATE PARKWAY**  
STANDARD DRAWINGS

JUNCTION BOX TYPE D

OFFICE OF THE CHIEF ENGINEER  
NEW JERSEY TURNPIKE AUTHORITY  
WOODBRIIDGE, NEW JERSEY

STANDARD DRAWING  
**E-14**

0	REISSUED DRAWING	09/21
REV.	DESCRIPTION	DATE