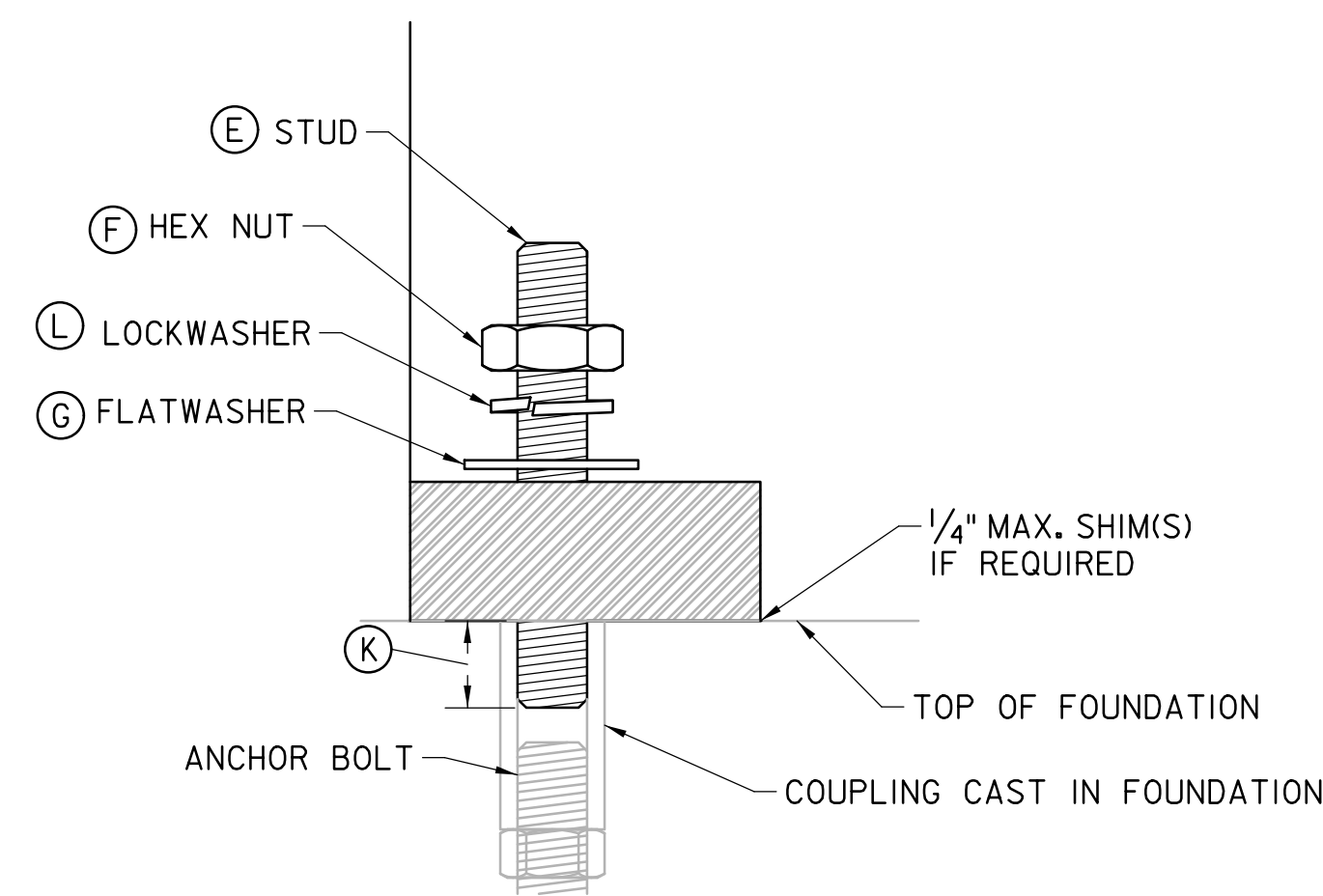
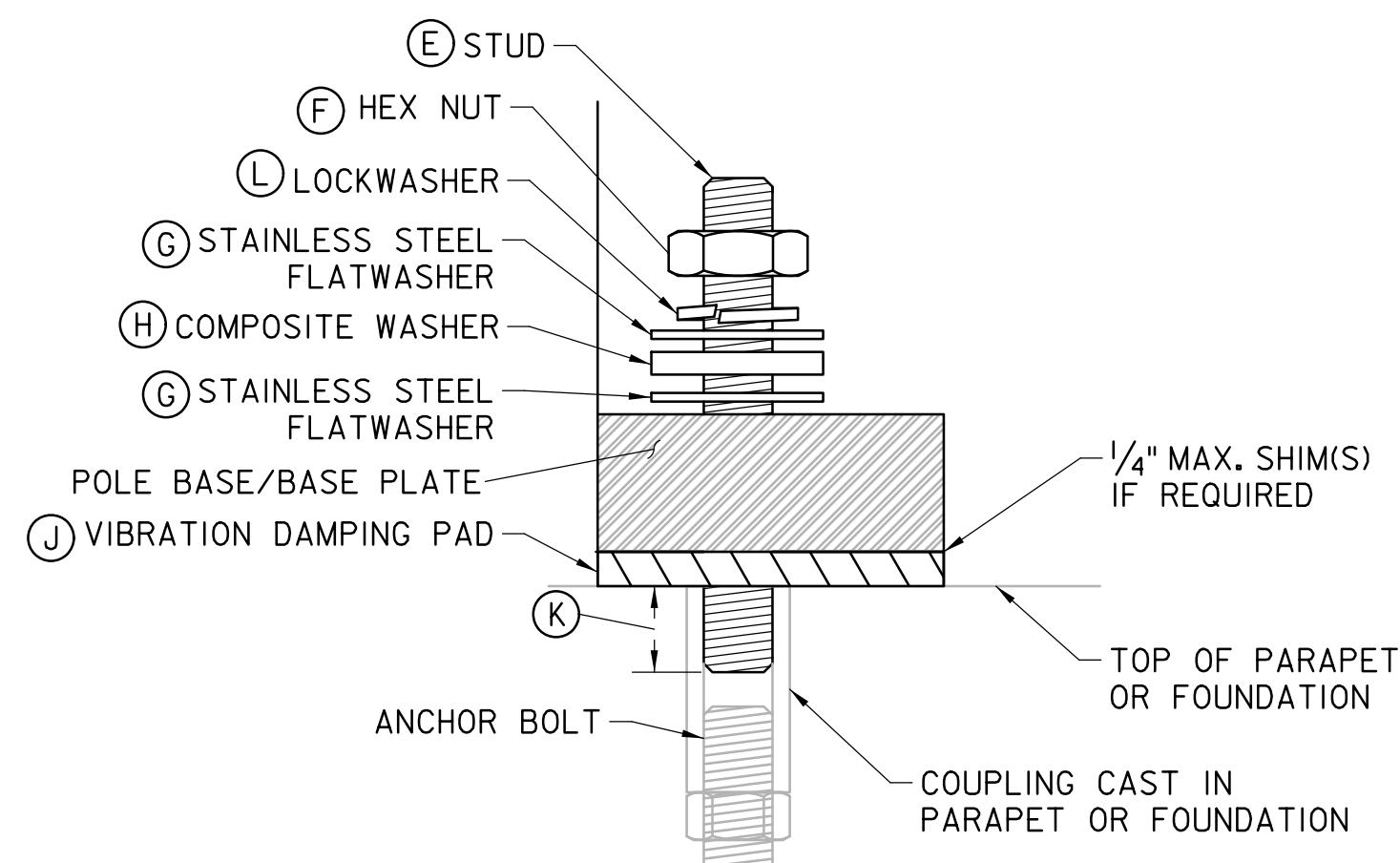


TYPICAL ALUMINUM AND STEEL POLE BOLT CIRCLE
SCALE: 3/4" = 1'-0"

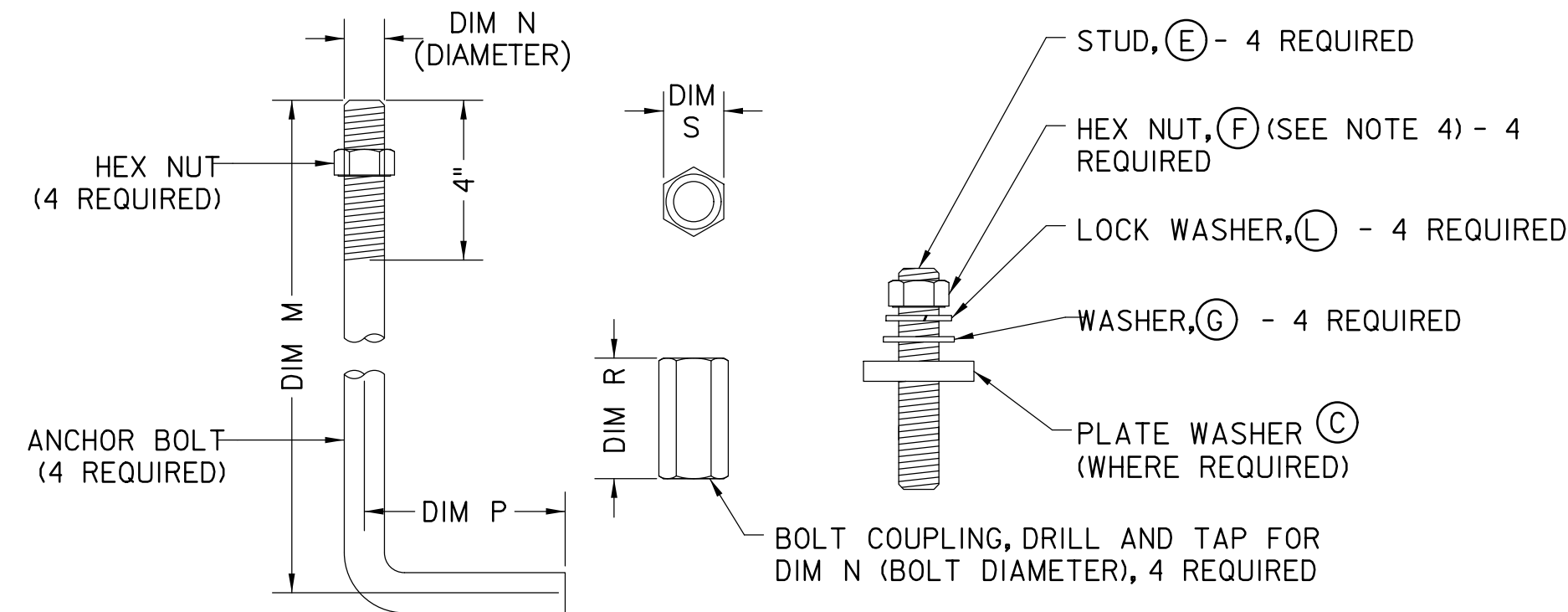


STEEL POLE TO FOUNDATION
(SEE NOTE 7)

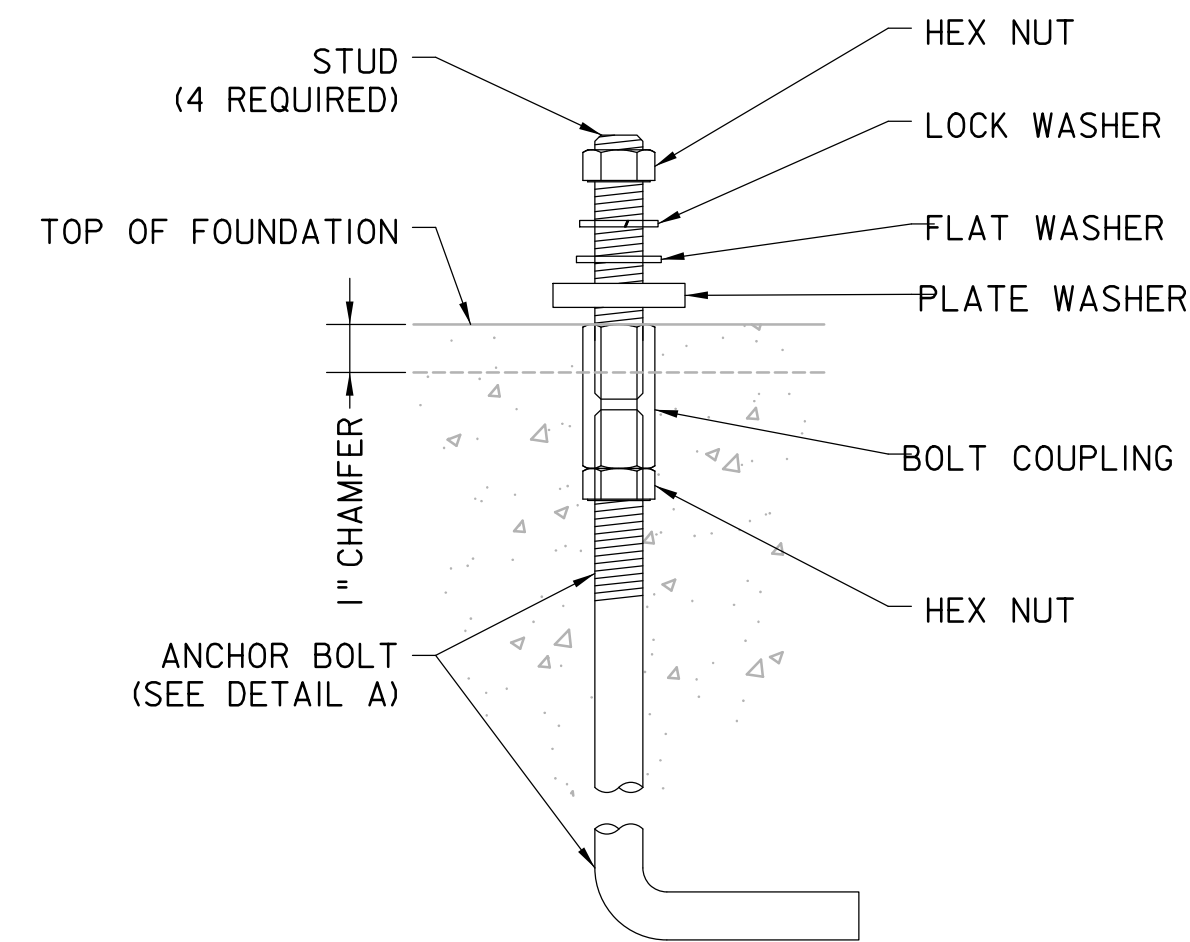


STEEL POLE TO PARAPET / FOUNDATION ON ELEVATED STRUCTURE
(SEE NOTE 7)

TYPICAL STEEL POLE BOLTING DETAILS
SCALE: 3/8" = 1"
(SEE SCHEDULE 10.1 FOR DIMENSIONS)



DETAIL A ANCHOR BOLT ASSEMBLY
NO SCALE
(SEE NOTE 2 AND SCHEDULE 10.1 THIS SHEET)



DETAIL B ANCHOR BOLT ASSEMBLY
NO SCALE
(SEE NOTE 2 AND SCHEDULE 10.1 THIS SHEET)

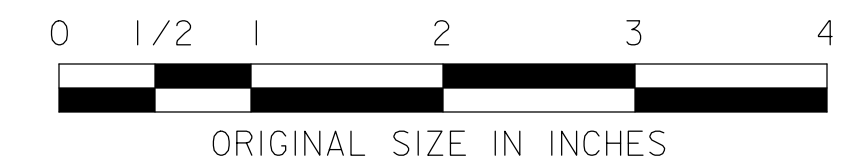
ITEM	DIMENSION WHEN USING ALUMINUM POLE WITH 11"-12" BOLT CIRCLE	DIMENSION WHEN USING STEEL POLE WITH 12" BOLT CIRCLE
A		1 1/4"-7NC x 4" long
B		1 5/16" I.D. FOR 1 1/4" BOLT
C		2 3/4" O.D. x 1/2" thk
D		1 1/4"-7NC
E	SEE DETAILS AND SCHEDULE 9.1 ON DRAWING E-09	1 1/4"-7NC x 5 1/2" LONG*
F		1 1/4"-7NC
G		1 5/16" I.D. FOR 1 1/4" BOLT
H		1 5/16" I.D. FOR 1 1/4" BOLT
J		VIBRATION DAMPING PAD
K		1 1/2" EMBEDMENT (MIN)
L		1 5/16" I.D. x 5/16" THK.
M	3'-0"	3'-6"
N	1"	1 1/4"
P	2"	5"
R	3"	3 3/4"
S	1 1/2"	1 3/16"

* ADD 1/2" TO LENGTH FOR A TOTAL OF 6" TO ACCOMMODATE VIBRATION DAMPING PAD

SCHEDULE 10.1 - DIMENSION SCHEDULE FOR ANCHOR BOLT ASSEMBLIES
(SEE NOTE 5)

NOTES

- NUMBER OF CONDUITS AND CONDUIT ARRANGEMENTS SHALL BE AS SHOWN ON CONTRACT PLANS.
- ALL STAINLESS STEEL (S.S.) HARDWARE SHALL BE TYPE 304 IN ACCORDANCE WITH ASTM A193 GRADE B8. ALL OTHER HARDWARE SHALL BE STEEL AND MEET THE FOLLOWING STANDARDS WHERE APPLICABLE:
 - GALVANIZING, HOT DIPPED PER ASTM A153
 - HEX NUTS PER ASTM A563 GRADE DH
 - WASHERS PER ASTM F436
 - ALL ANCHOR BOLTS SHALL BE ASTM F-1554, GR. 105
- ANCHOR BOLT NUT SHALL BE INSTALLED TO PREVENT THE COUPLING FROM TURNING DURING INSTALLATION.
- THE RIGID NONMETALLIC CONDUIT SHALL END WITH A FEMALE THREAD COUPLING WITH ITS BOTTOM EDGE FLUSH WITH THE FACE OF THE FOUNDATION. THE CONTRACTOR SHALL GLUE A MALE THREAD FITTING TO THE CONDUIT COUPLING TO EXTEND THE CONDUIT UNDERGROUND WHERE DIRECTED IN THE CONTRACT PLANS.
- FOR DIMENSIONS OF LIGHTING HARDWARE NOT SHOWN ON THIS SHEET, SEE STANDARD DRAWING E-09.
- JUNCTION BOX FOUNDATIONS AS SHOWN ON STANDARD DRAWING E-12 ARE PREFERRED OVER CONCRETE BASE SHOWN ON THIS SHEET. CONCRETE BASES SHALL BE USED WHERE JUNCTION BOX FOUNDATIONS WOULD OTHERWISE NOT FIT DUE TO SPACE RESTRICTIONS. CONFIRM THE USE OF CONCRETE BASE WITH THE AUTHORITY PRIOR TO INCLUDING IN DESIGN.
- CONCRETE BASES SHALL BE CONSTRUCTED WITH CLASS C CONCRETE.
- MATCH ANCHOR BOLT LOCATIONS WITH THE BASE PLATE BOLT PATTERN.
- ALL REINFORCEMENT IN PEDESTALS SHALL BE GALVANIZED AS PER ASTM A153.



NEW JERSEY TURNPIKE AUTHORITY
NEW JERSEY TURNPIKE GARDEN STATE PARKWAY
STANDARD DRAWINGS

LIGHTING STANDARD ANCHOR BOLT DETAILS

OFFICE OF THE CHIEF ENGINEER
NEW JERSEY TURNPIKE AUTHORITY
WOODBRIIDGE, NEW JERSEY

STANDARD DRAWING

E-10

REV.	DESCRIPTION	DATE
0	REISSUED DRAWING	09/21