

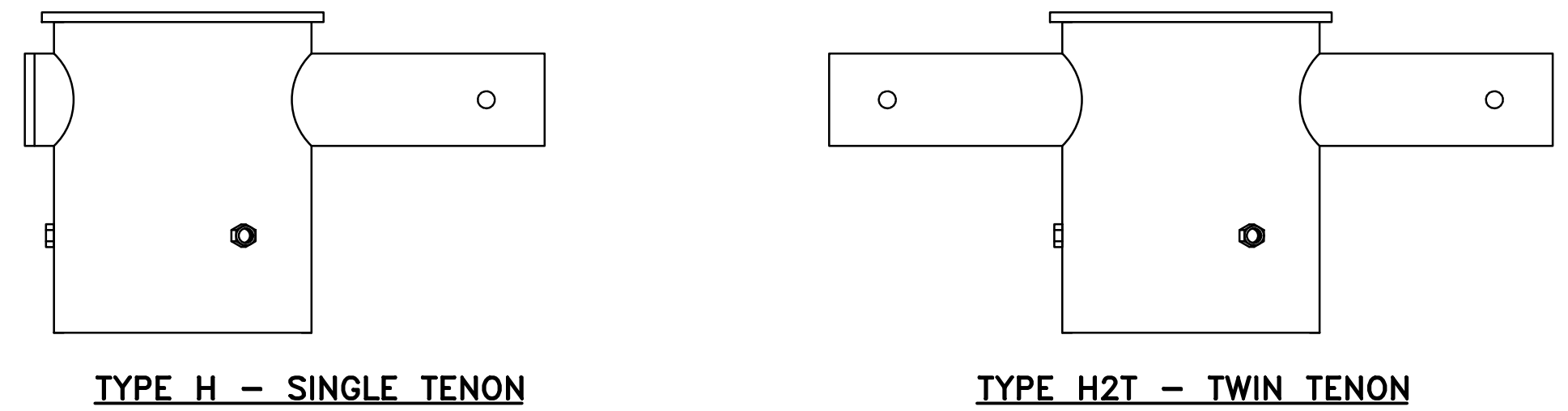
- NOTES:**
- LUMINAIRE MOUNTING ASSEMBLY DETAILS SHOWN SHALL BE USED FOR STEEL AND ALUMINUM LIGHTING STANDARDS.
 - LUMINAIRE MOUNTING ASSEMBLY FOR ALUMINUM LIGHTING STANDARD SHALL BE MADE OUT OF ALLOY 6061-T6 MATERIAL TO MATCH LIGHTING STANDARD MATERIAL.
 - LUMINAIRE MOUNTING ASSEMBLY FOR STEEL LIGHTING STANDARD SHALL BE MADE OUT OF ASTM A572, GR. 55 OR 65 MATERIAL TO MATCH LIGHTING STANDARD MATERIAL.
 - LUMINAIRE MOUNTING ASSEMBLY INNER AND OUTER DIAMETER SHALL BE SIZED BASED ON THE LIGHTING STANDARD POLE OUTER DIAMETER.
 - H2T TWIN LUMINAIRES SHALL BE 180° AWAY FROM EACH OTHER.
 - LUMINAIRE MOUNTING ASSEMBLIES SHALL BE FASTENED TO POLE SHAFT WITH HARDWARE AS SHOWN BELOW:
 TYPE H AND H2T
 - (3) 3/8" - 16NC X 1" LONG SQ. HEAD CAP POINT, SET SCREWS
 - (3) 3/8" - 16NC JAM NUTS
 TYPE H2 AND H3
 - (2) 1/2" - 13NC X 8" LONG STUDBOLT
 - (4) 1/2" - 13NC JAM NUTS
 - (4) 1/2" LOCKWASHER, FLATWASHER, AND SCREWS
 - MOUNTING ASSEMBLY SHALL BE MODIFIED FOR TYPE H3 TO HAVE ONLY FOUR (4) PLATES.
 - ALL HARDWARE SHALL BE STAINLESS STEEL GRADE 304 OR BETTER, UNLESS OTHERWISE NOTED.
 - WHEN HORIZONTAL MOUNTING ADAPTERS ARE USED TO INSTALL THE GALLEON FIXTURE, A THROUGH BOLT SHALL BE INSTALLED TO SECURE MAST ARM ADAPTER AND TENON. TENON REQUIRES A HOLE FOR A 3/8"-16 STAINLESS STEEL HEX HEAD BOLT WITH LOCK WASHER AND DOUBLE NUT, LENGTH AS REQUIRED. THE TENON ADAPTER MAY BE MANUFACTURED WITH THIS HOLE OR THE HOLE MAY BE FIELD-DRILLED.

**LUMINAIRE MOUNTING ASSEMBLY
TYPE H AND H2T**

(TYPE H SINGLE TENON, TYPE H2T TWIN TENON AT 180°)
SCALE: 6" = 1'-0"

**LUMINAIRE MOUNTING ASSEMBLY
TYPE H2 AND H3**

SCALE: 1 1/2" = 1'-0"



TYPE H AND H2T ELEVATION VIEW

SCALE: 3" = 1'-0"

REV.	DESCRIPTION	DATE
0	REISSUED DRAWING	09/21

NEW JERSEY TURNPIKE AUTHORITY
**NEW JERSEY TURNPIKE
 GARDEN STATE PARKWAY**
 STANDARD DRAWINGS

**TYPE H POLE-TOP LUMINAIRE
 MOUNTING ASSEMBLIES**

OFFICE OF THE CHIEF ENGINEER
 NEW JERSEY TURNPIKE AUTHORITY
 WOODBRIDGE, NEW JERSEY

STANDARD DRAWING
E-04