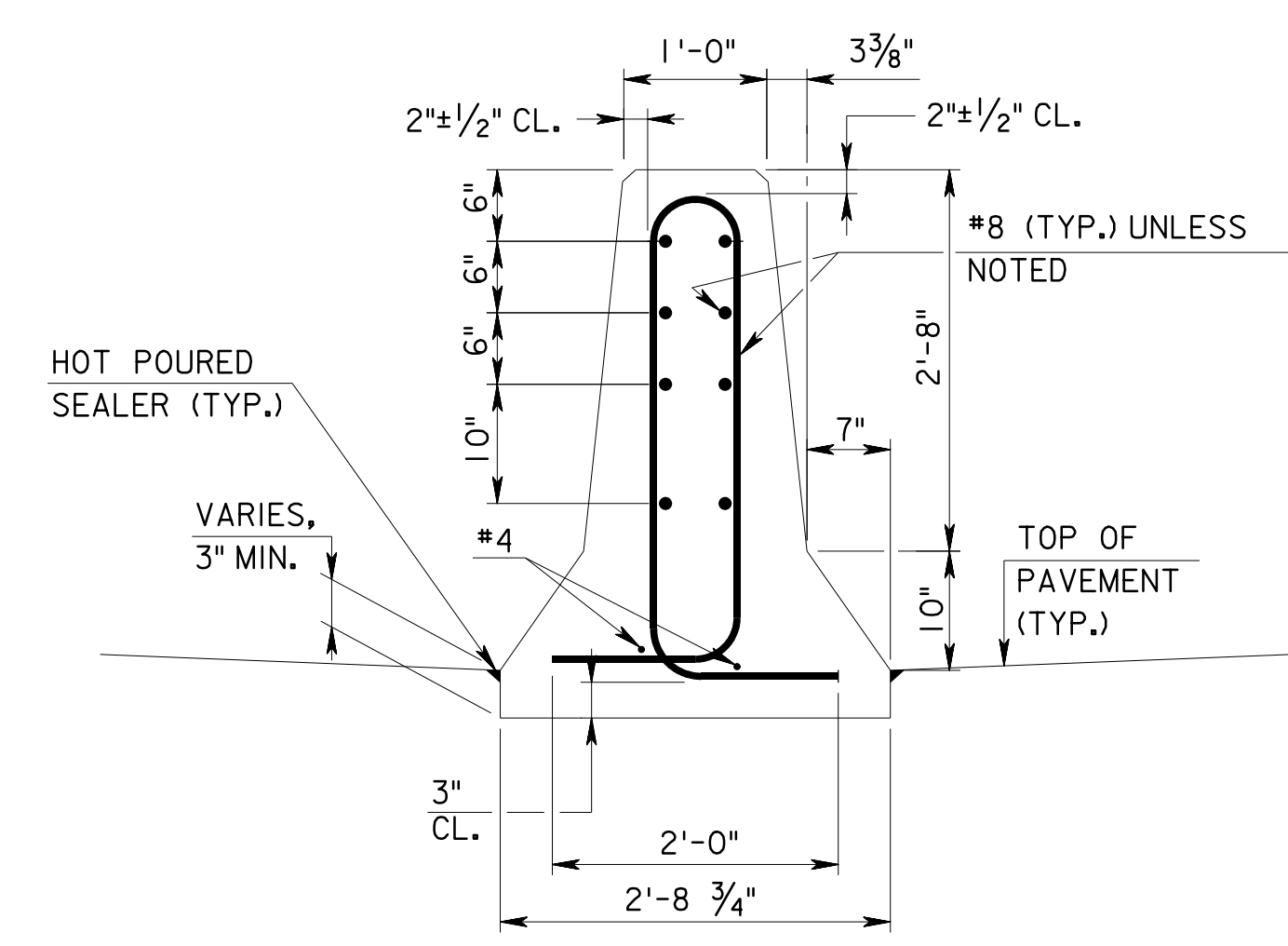
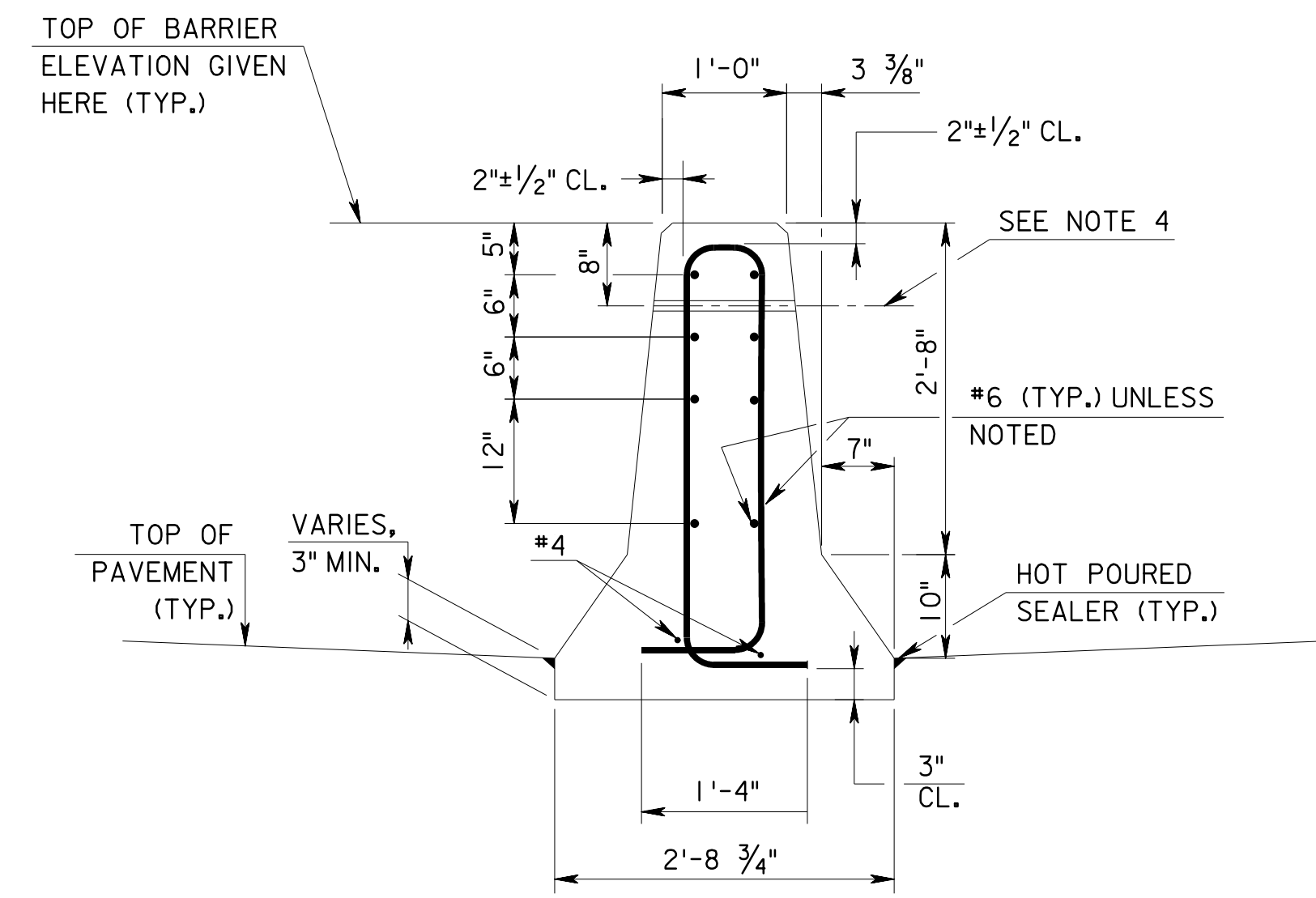


ELEVATION
N.T.S.

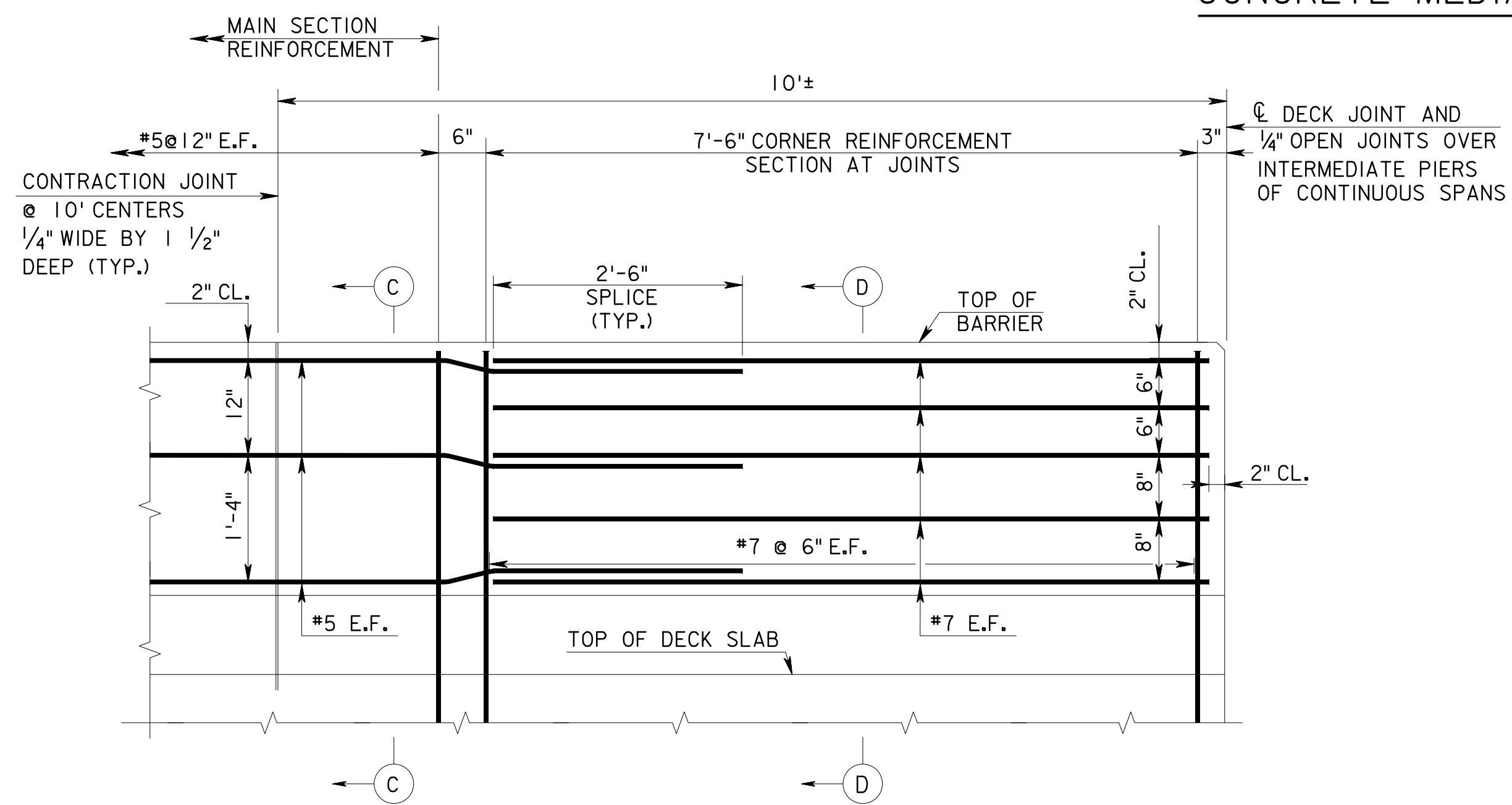


SECTION A-A
N.T.S.

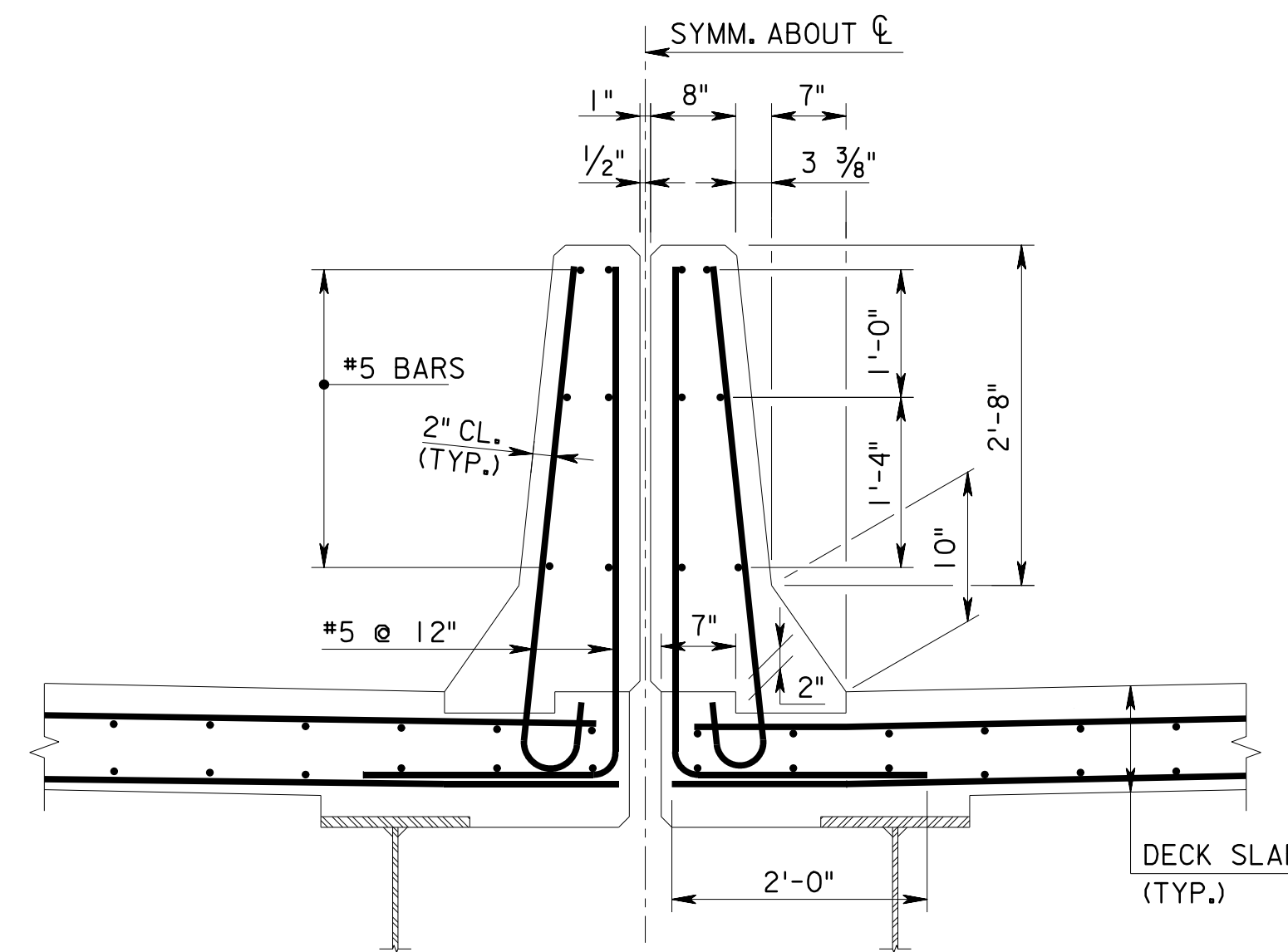


SECTION B-B
N.T.S.

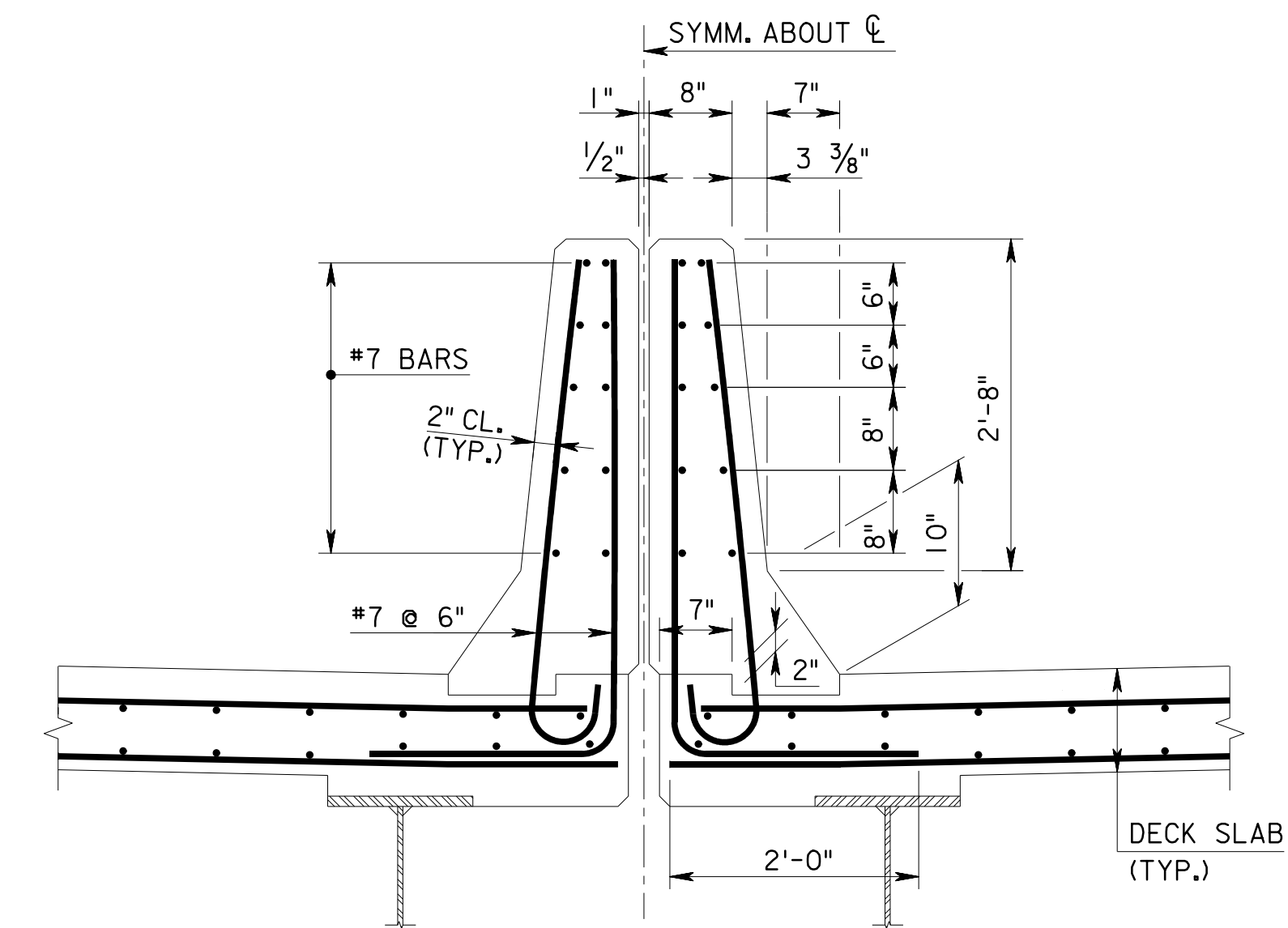
CONCRETE MEDIAN BARRIER, ROADWAY



ELEVATION
N.T.S.



SECTION C-C
N.T.S.



SECTION D-D
N.T.S.

CONCRETE MEDIAN BARRIER, BRIDGE

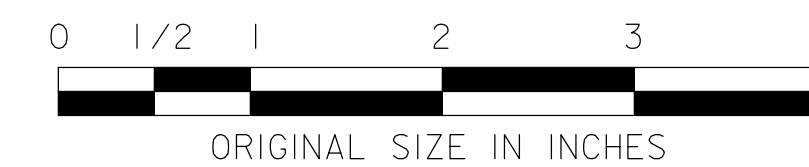
NOTES:

1. CONCRETE MEDIAN BARRIER SHALL CONFORM TO SECTION 508.
2. ALL CONCRETE MEDIAN BARRIER, ROADWAY REINFORCEMENT SHALL BE EPOXY COATED. ALL REINFORCEMENT STEEL IN CONCRETE MEDIAN BARRIER ON BRIDGES, WINGWALLS, AND RETAINING WALLS SHALL BE GALVANIZED UNLESS OTHERWISE NOTED ON THE CONTRACT PLANS.
3. FOR ROADWAY BARRIER ONLY, 1" EXPANSION JOINTS SHALL BE CONSTRUCTED AT ALL LOCATIONS SHOWN IN PLANS. CONTRACTION JOINTS SHALL BE CONSTRUCTED AT 250' INTERVALS. EXPANSION AND CONTRACTION JOINTS SHALL EXTEND THROUGH THE ENTIRE BARRIER SECTION.

NOTES (CONTINUED):

4. 1" Ø HOLE SPACED AT 300 FT INTERVAL IN LOCATIONS, 2 INCHES MIN. CLEAR OF VERTICAL REINFORCEMENT. WHEN 1" Ø HORIZONTAL HOLES FALL WITHIN 100' OF CONCRETE MEDIAN BARRIER PROTECTION SECTIONS, A SECOND HOLE IS REQUIRED ON THE OTHER SIDE OF THE PROTECTION SECTIONS. HOLES SHALL NOT BE PLACED IN HORIZONTAL TRANSITION, PROTECTION SECTION OR BRIDGE BARRIERS.

MASH TL-5



REV.	DESCRIPTION	DATE
0	ORIGINAL DRAWING	07/21

NEW JERSEY TURNPIKE AUTHORITY
**NEW JERSEY TURNPIKE
GARDEN STATE PARKWAY**

STANDARD DRAWINGS

CONCRETE MEDIAN BARRIER DETAILS

OFFICE OF THE CHIEF ENGINEER
NEW JERSEY TURNPIKE AUTHORITY
WOODBRIE, NEW JERSEY

STANDARD DRAWING

MB-1