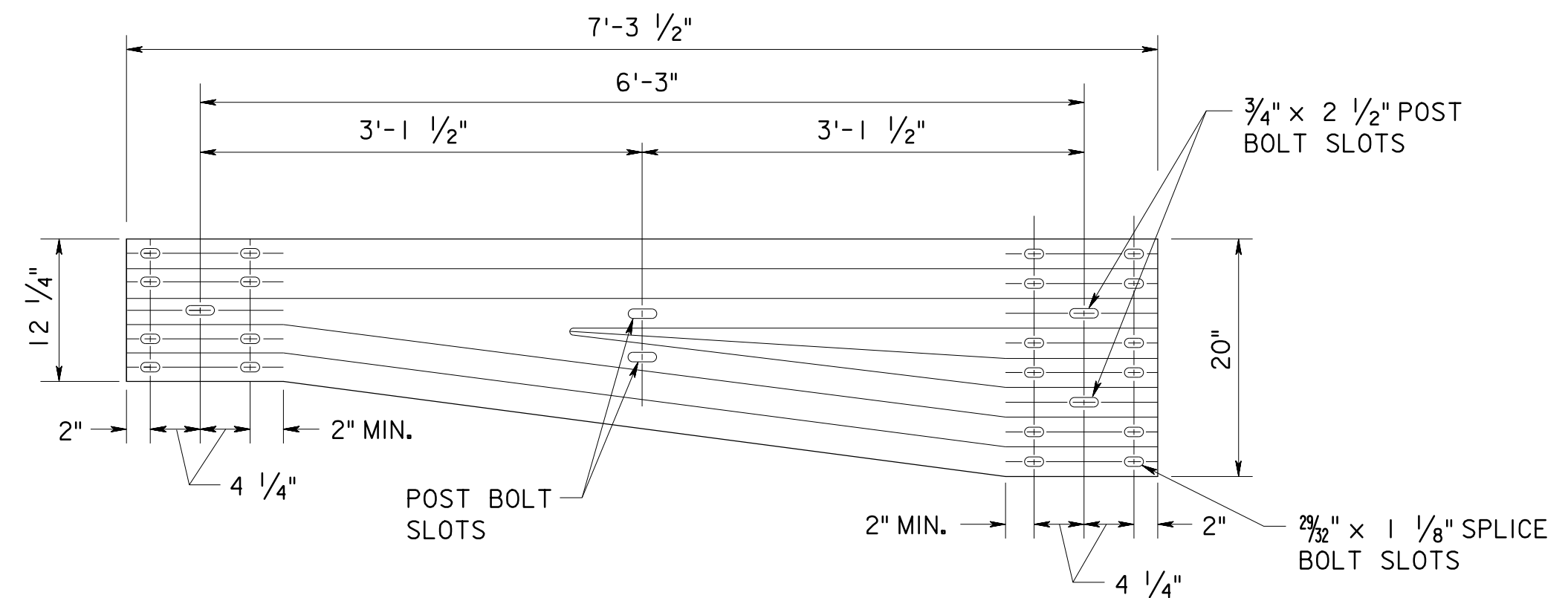
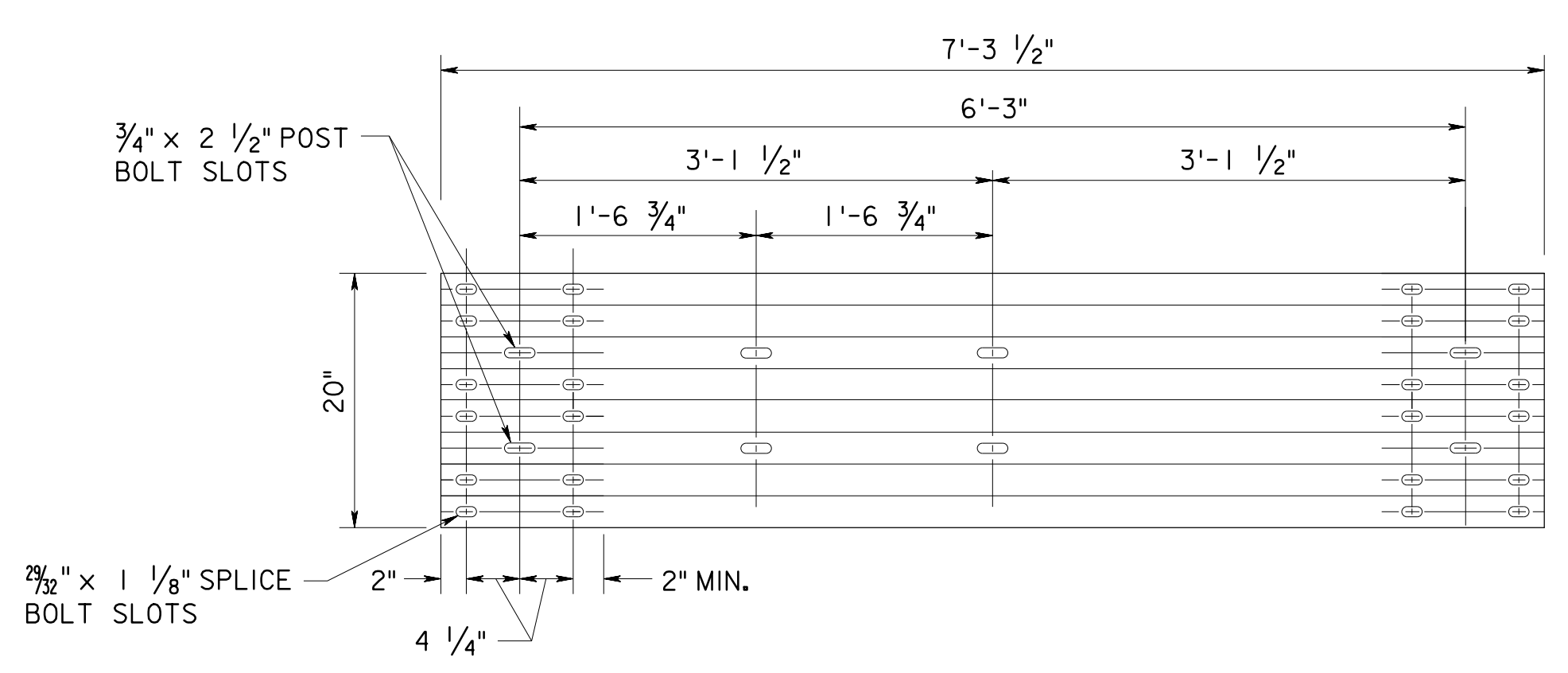


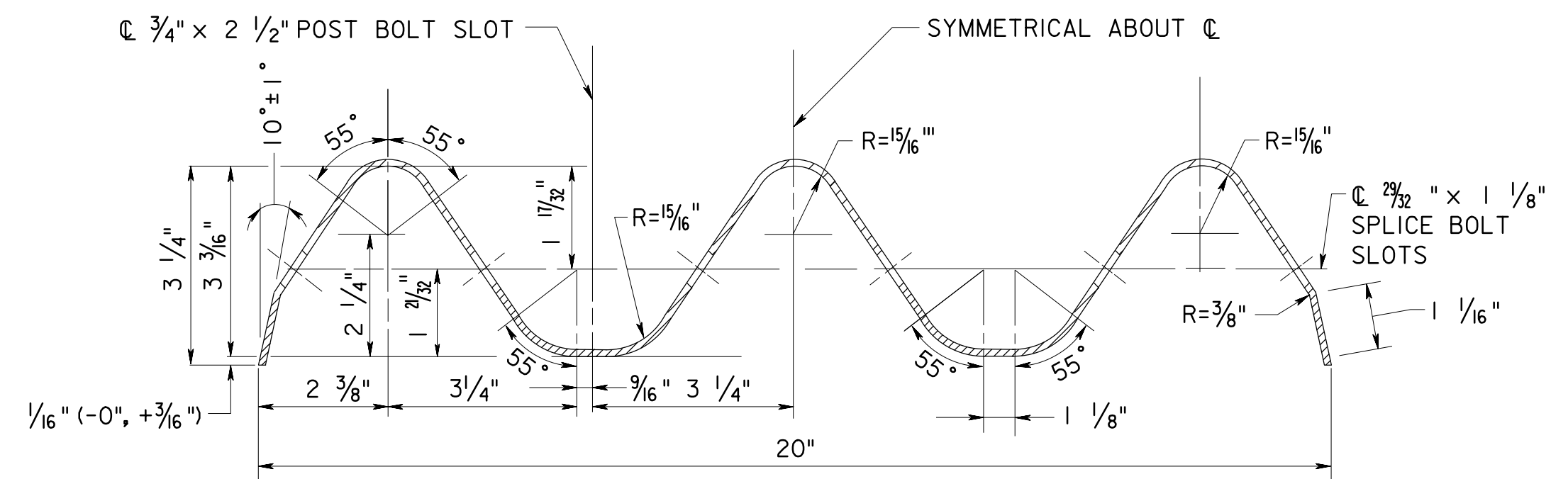
THRIE BEAM TO W-BEAM ASYMMETRICAL TRANSITION
SECTION - RIGHT SIDE APPROACH
(10 GAUGE)



THRIE BEAM TO W-BEAM ASYMMETRICAL TRANSITION
SECTION - LEFT SIDE APPROACH
(10 GAUGE)



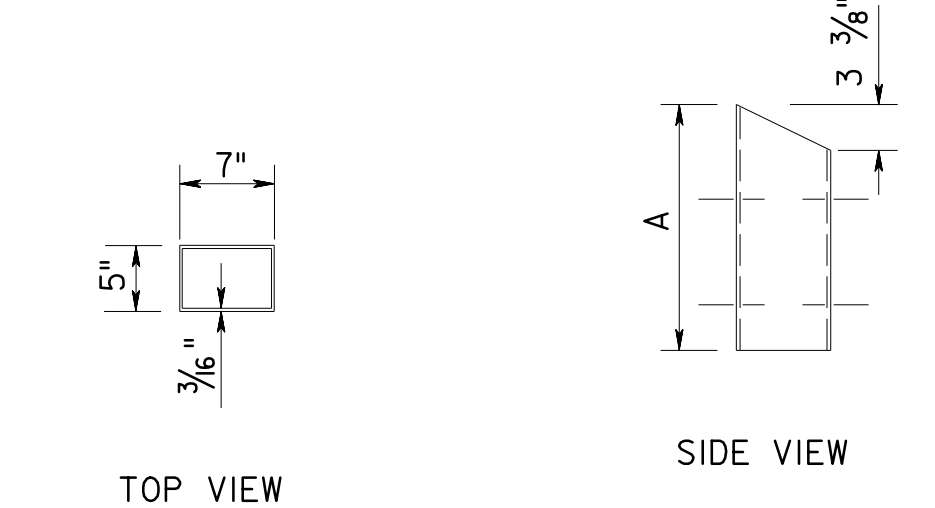
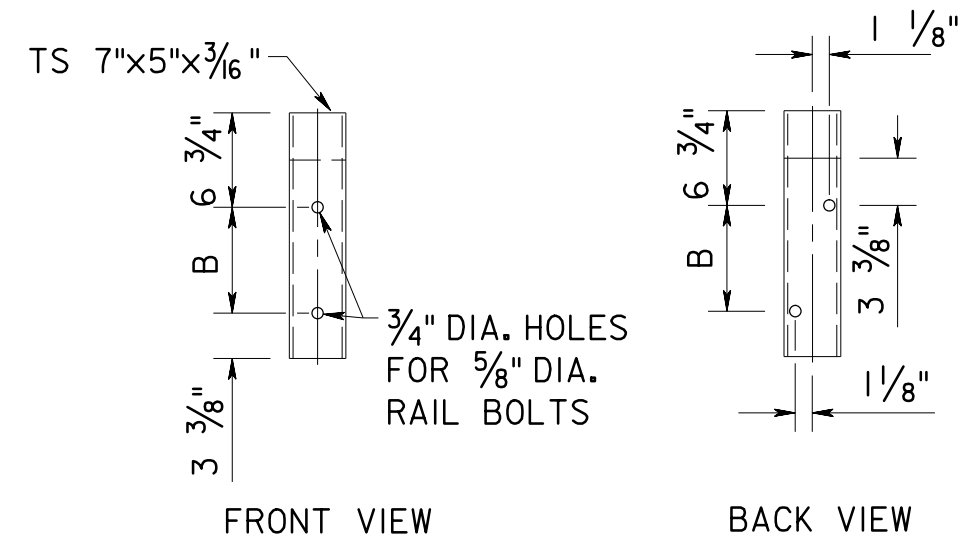
THRIE BEAM SECTION FOR PARAPET CONNECTIONS
(12 GAUGE)



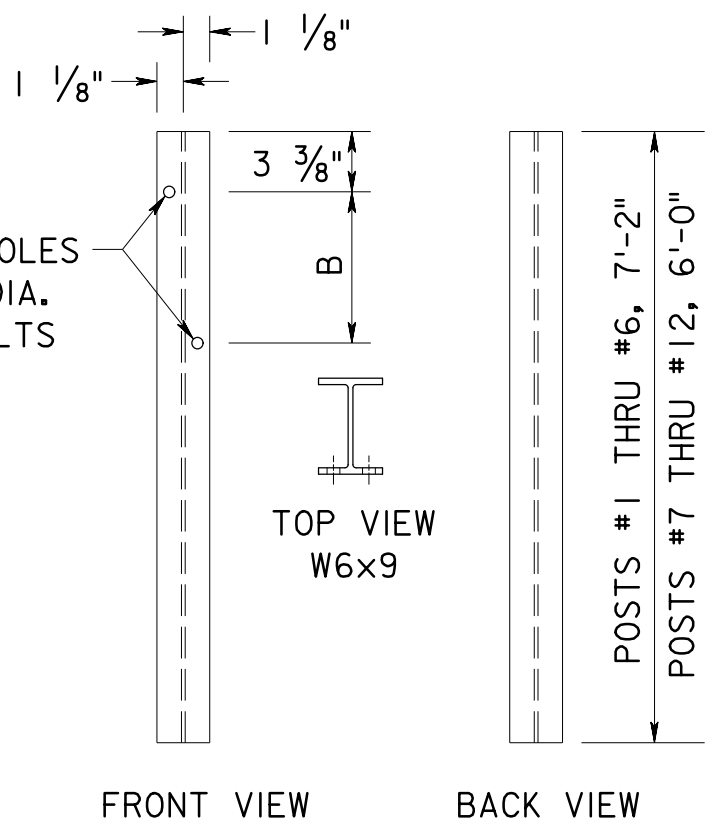
RAIL ELEMENT TO BE SUPPLIED IN LENGTHS OF 13'-6 1/2" EXCEPT AS NOTED
THRIE BEAM RAIL ELEMENT
(12 GAUGE)

DIM.	POSTS #1 - #11	POST #12
A	1'-5 3/4"	1'-1 7/8"
B	7 5/8"	3 3/4"

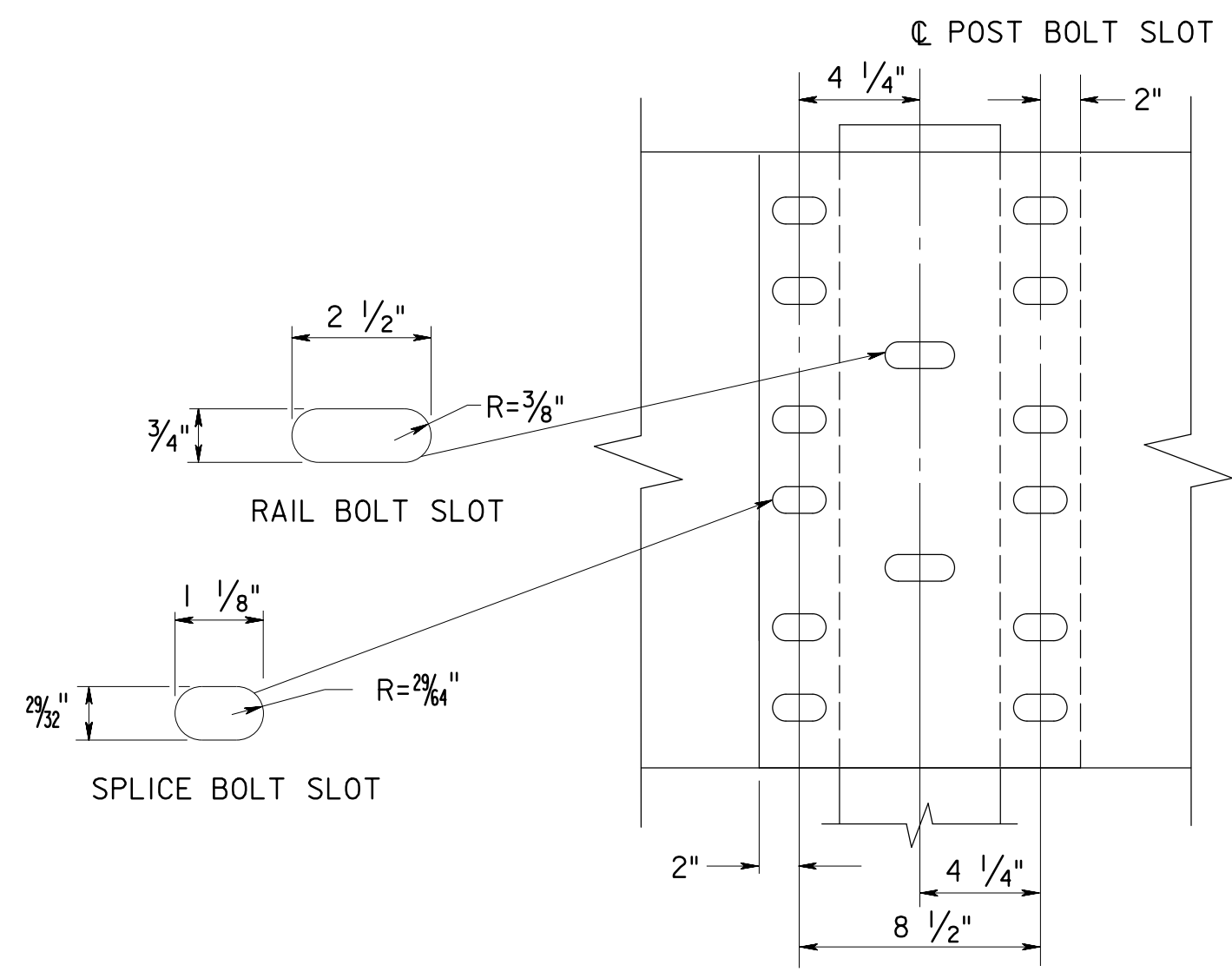
BLOCKOUT DIMENSIONS



STRUCTURAL TUBE BLOCKOUTS ATTACHMENTS
SEE NOTE 6

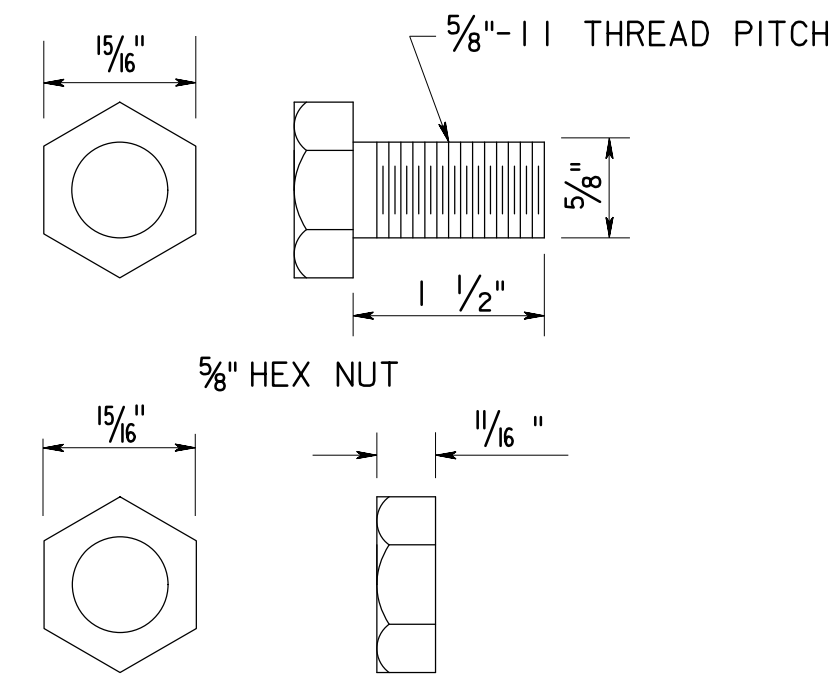
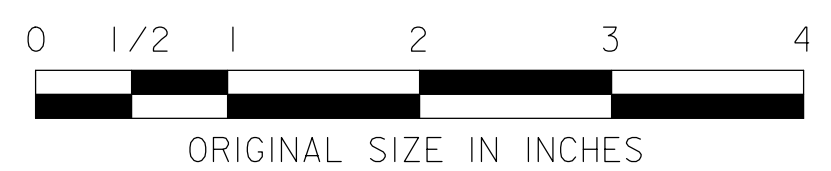


POSTS - ATTACHMENTS
SEE NOTE 5

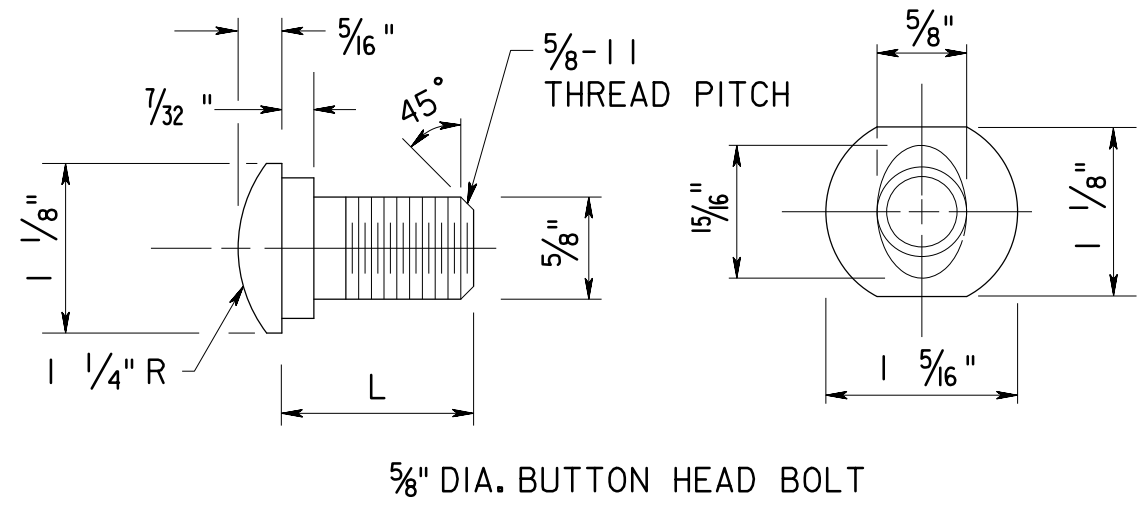


THRIE BEAM RAIL SPLICE

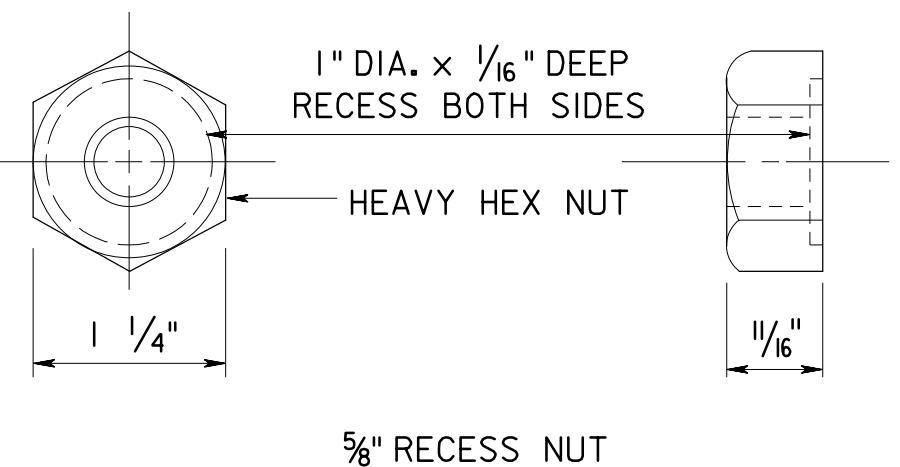
MASH TL-3



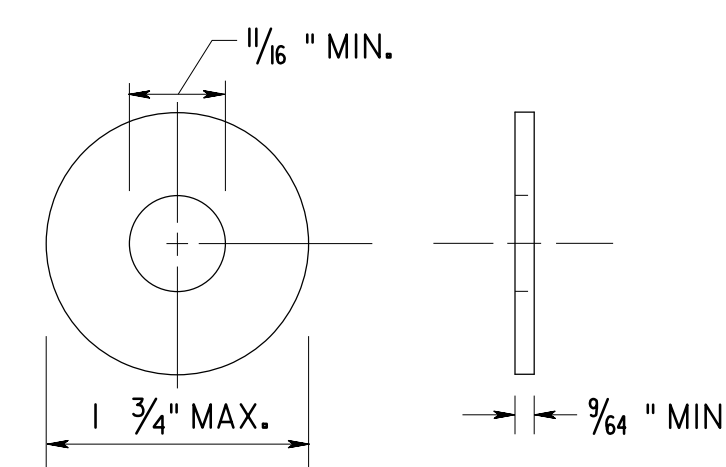
POST NUT & BOLT



TYPE	L	MIN. THREAD LENGTH
SPLICE	1 1/4"	FULL LENGTH THREAD
RAIL	2"	FULL LENGTH THREAD



SPLICE & RAIL NUT & BOLT



STEEL WASHER

NOTES:

- ALL DIMENSIONS ARE SUBJECT TO MANUFACTURING TOLERANCES.
- RAIL ELEMENTS TO BE FURNISHED SHOPCURVED, CONCAVE OR CONVEX, FOR RADII BETWEEN 20 FEET AND 150 FEET.
- STEEL FOR RAIL ELEMENTS, POSTS AND MISCELLANEOUS HARDWARE SHALL CONFORM TO THE SPECIFICATIONS AND ITS AMENDMENTS.
- A MINIMUM 12'-6" LENGTH OF STANDARD W-BEAM GUIDE RAIL IS REQUIRED BETWEEN THE TRANSITION SECTION AND A TANGENT GUIDE RAIL TERMINAL OR A STRAIGHT FLARE.
- POSTS 1 THRU 6 TO BE 7'-2" LONG WITH 4'-10" POST EMBEDMENT. POSTS 7 THRU 12 TO BE 6'-0" LONG WITH 3'-8" POST EMBEDMENT. SEE GR-13 AND GR-14 FOR ADDITIONAL DETAILS.
- STRUCTURAL TUBE BLOCKOUTS ARE TO BE USED FOR POSTS 1 THRU 12. SEE GR-13 AND GR-14 FOR ADDITIONAL DETAILS.
- SEE GR-17 FOR ADDITIONAL NOTES AND INFORMATION PERTAINING TO TRANSITIONS AND ATTACHMENTS.

NEW JERSEY TURNPIKE AUTHORITY
NEW JERSEY TURNPIKE GARDEN STATE PARKWAY
STANDARD DRAWINGS

THRIE BEAM TRANSITION SECTIONS AND ATTACHMENTS

OFFICE OF THE CHIEF ENGINEER
NEW JERSEY TURNPIKE AUTHORITY
WOODBIDGE, NEW JERSEY

STANDARD DRAWING
GR-18

REV.	DESCRIPTION	DATE
0	ORIGINAL DRAWING	07/21