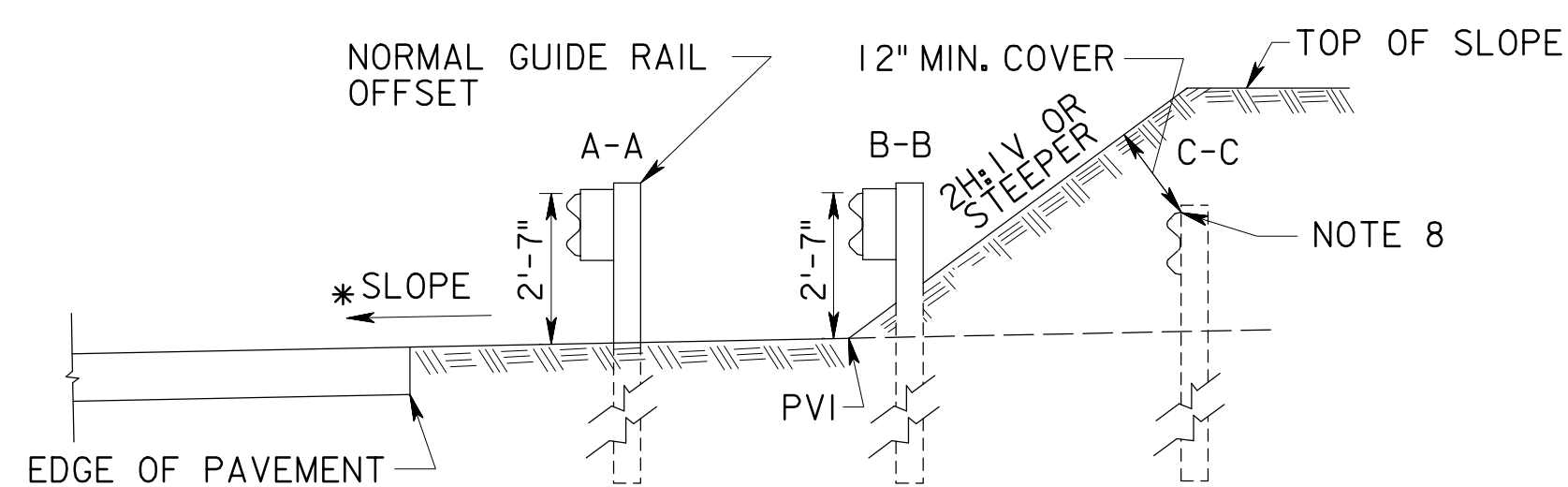
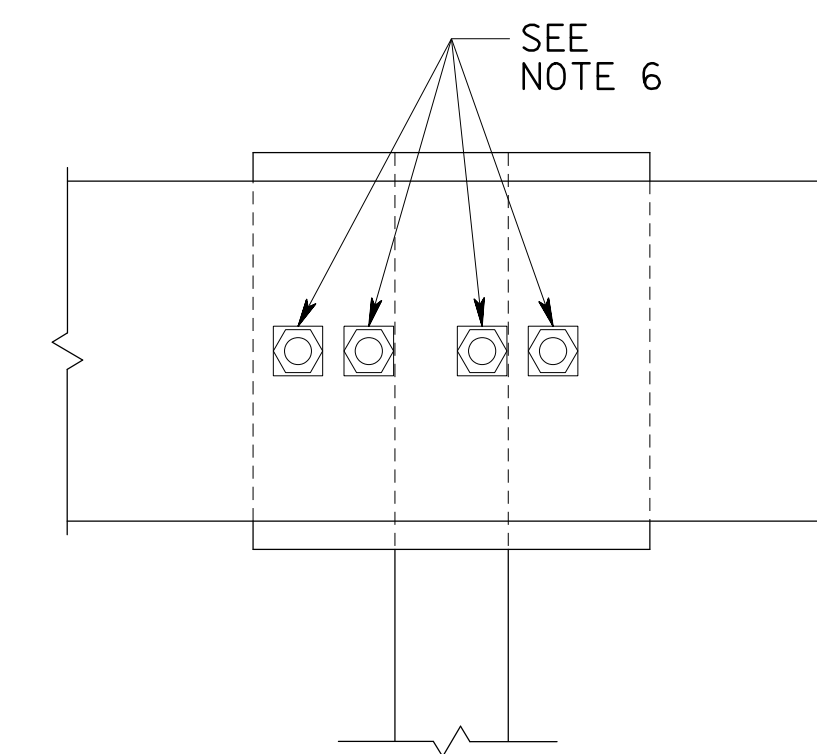


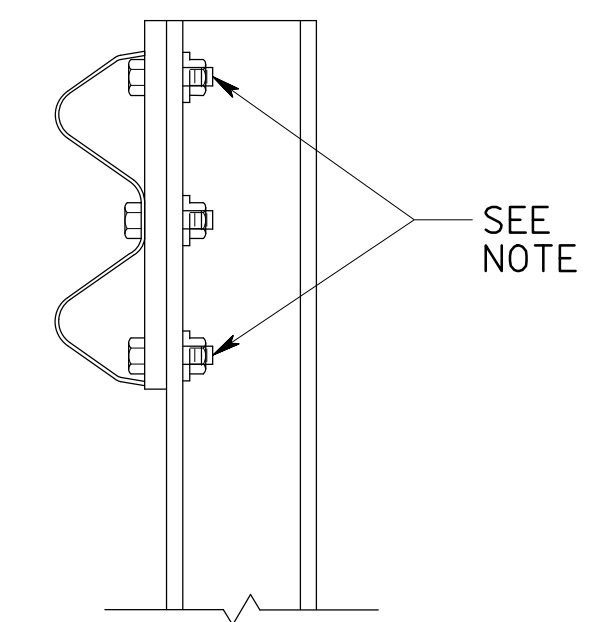
FORESLOPE GRADED AWAY FROM ROADWAY - SECTION VIEW



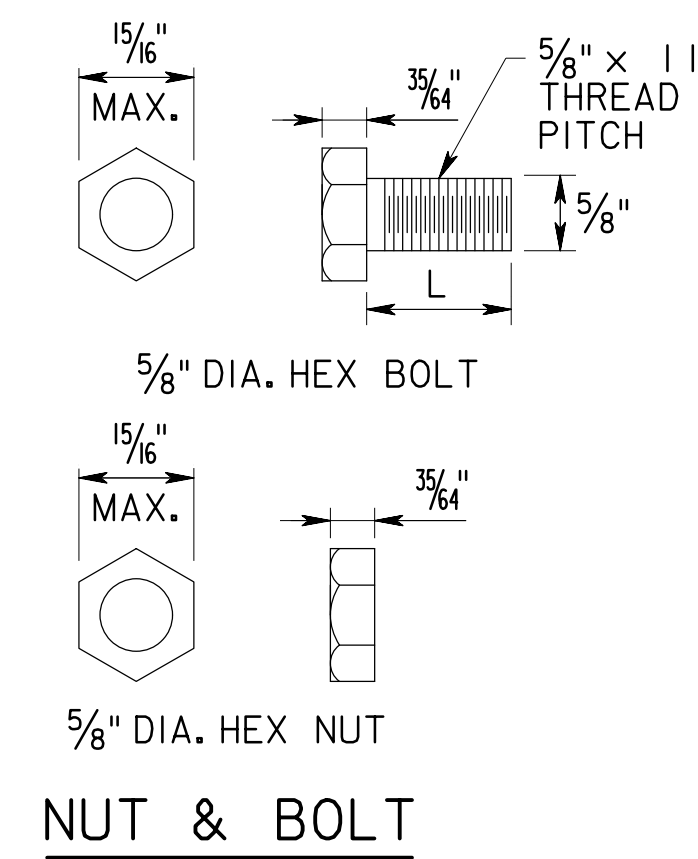
FORESLOPE GRADED TOWARD ROADWAY - SECTION VIEW



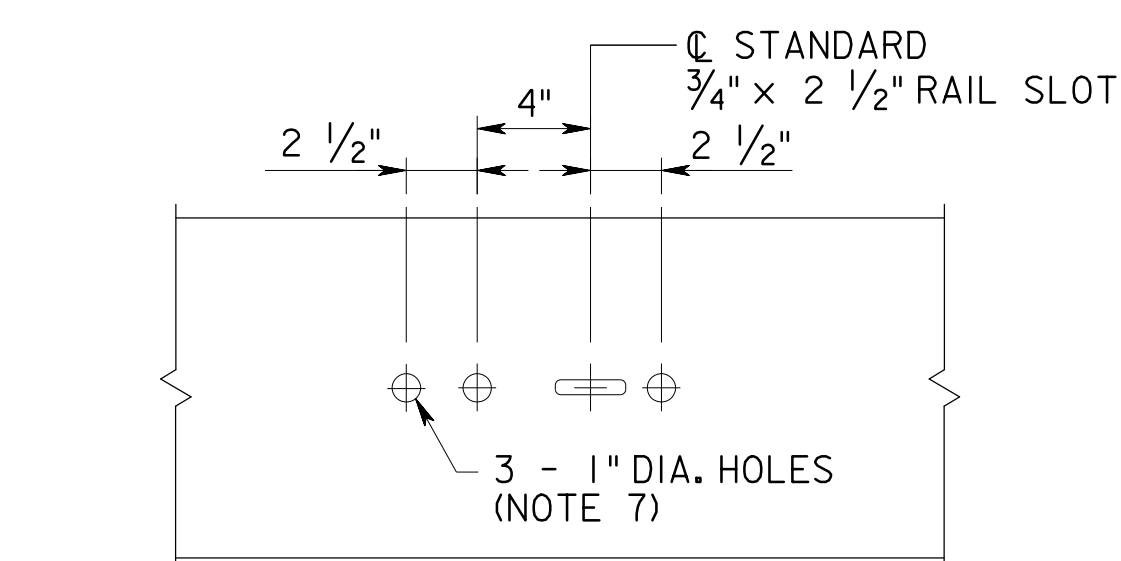
SECTION D-D



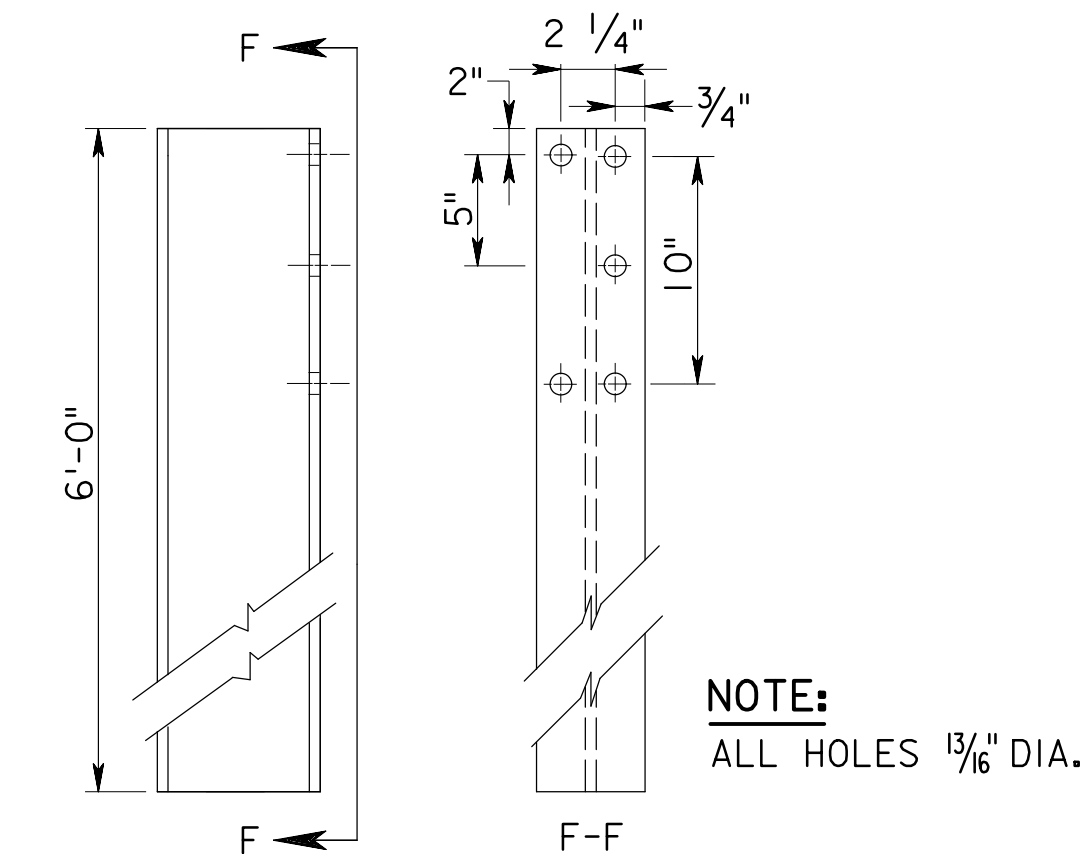
SECTION E-E



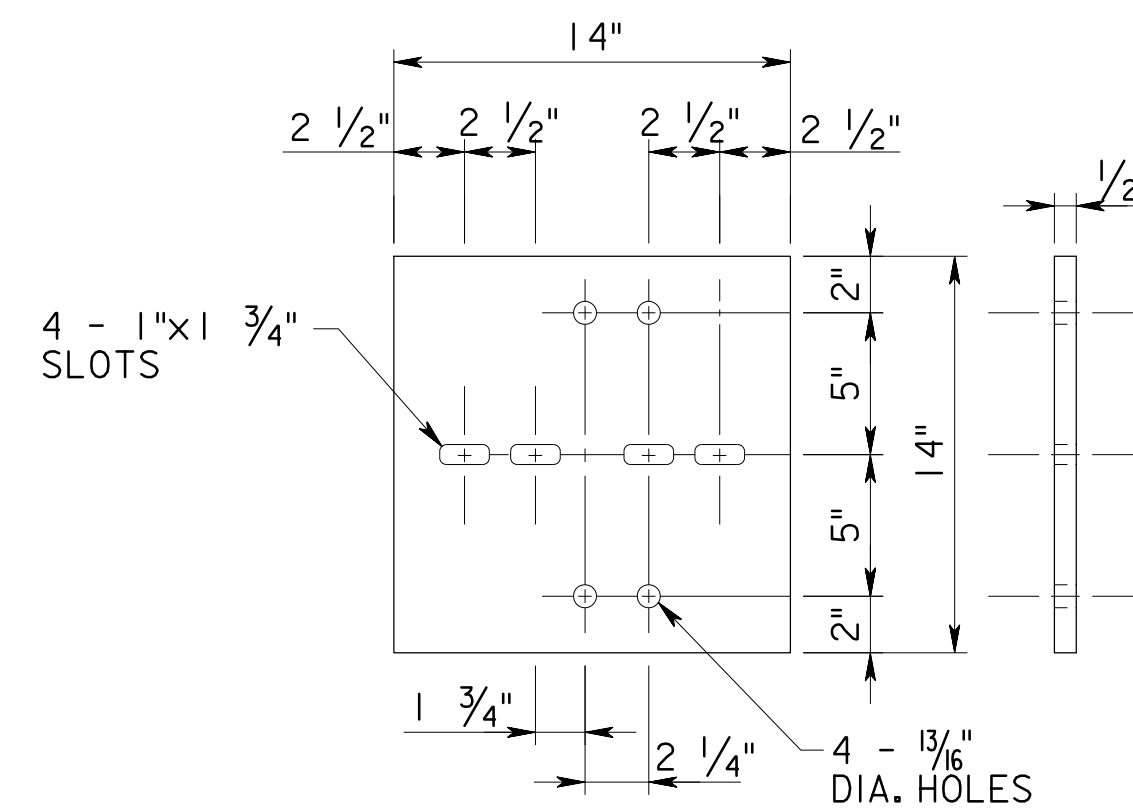
NUT & BOLT



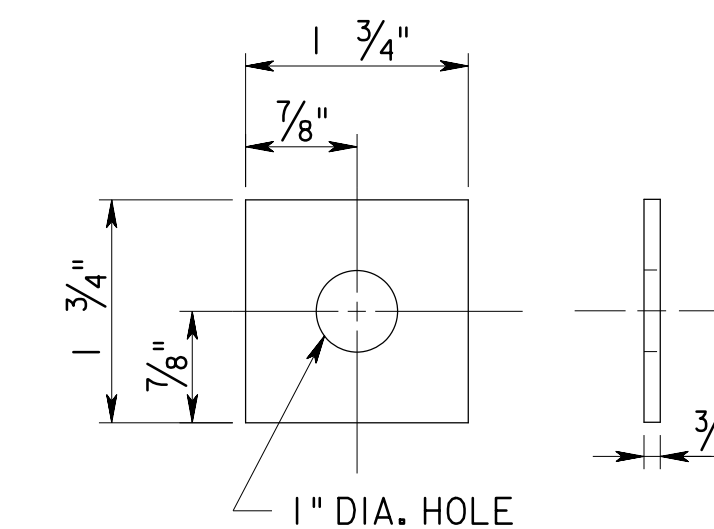
BEAM GUIDE RAIL TERMINAL HOLES



W6X8.5 OR W6X9 STEEL POST  
6' TERMINAL POST

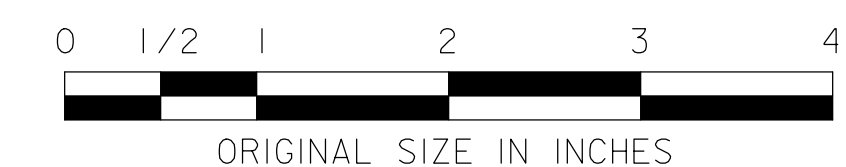


STEEL PLATE



SQUARE WASHER

MASH TL-3



**NOTES:**

1. TOP OF GUIDE RAIL TO BE PARALLEL TO ROADWAY GRADE WHERE FORESLOPE IS GRADED AWAY FROM SHOULDER.
2. INSTALL RUB RAIL AND 8' LONG POSTS WHERE CLEARANCE FROM BOTTOM OF RAIL TO GROUND EXCEEDS 21".
3. TAPER GUIDE RAIL HEIGHT TO PROVIDE 12" MINIMUM COVER AT LAST POST.
4. FLARE AS SHOWN ON PLANS.
5. ATTACH STEEL PLATE TO POST WITH FOUR - 5/8" x 1 1/2" LONG HEX HEAD BOLTS W/ HEX HEAD NUTS.
6. ATTACH RAIL TO STEEL PLATE WITH FOUR - 5/8" x 2" LONG HEX BOLTS W/SQUARE WASHER AND NUT.
7. DRILL 3 - 1" DIA. HOLES IN BEAM GUIDE RAIL.
8. THE TOP OF RAIL ELEVATION AT SECTION C-C SHOULD BE 2" TO 12" LOWER THAN THE TOP OF RAIL ELEVATION AT SECTION B-B.

REV.	DESCRIPTION	DATE
0	ORIGINAL DRAWING	07/21

NEW JERSEY TURNPIKE AUTHORITY  
**NEW JERSEY TURNPIKE  
GARDEN STATE PARKWAY**  
STANDARD DRAWINGS

**BURIED GUIDE RAIL TERMINAL**

OFFICE OF THE CHIEF ENGINEER  
NEW JERSEY TURNPIKE AUTHORITY  
WOODBRIIDGE, NEW JERSEY

STANDARD DRAWING

**GR-11**