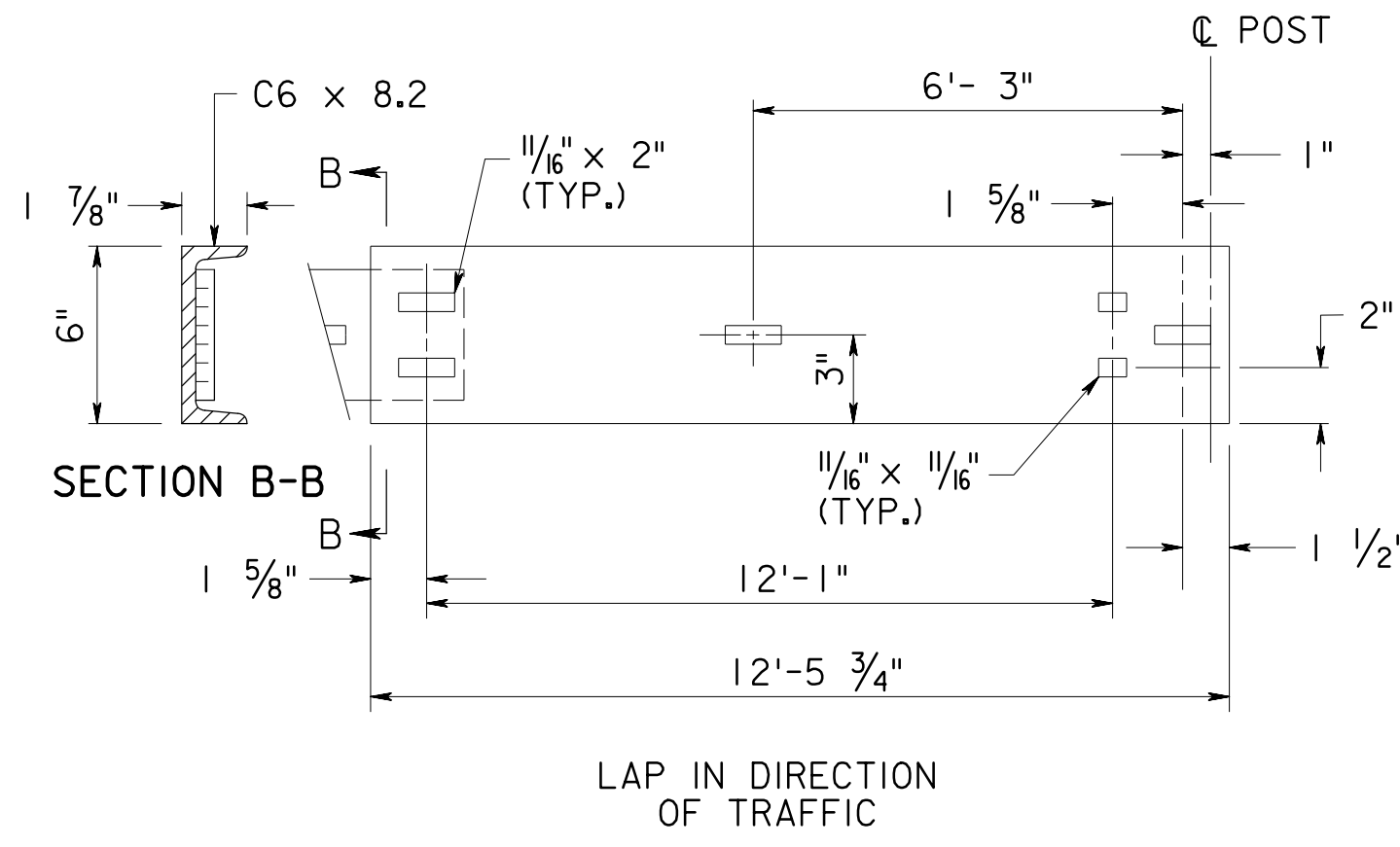


SECTION C-C

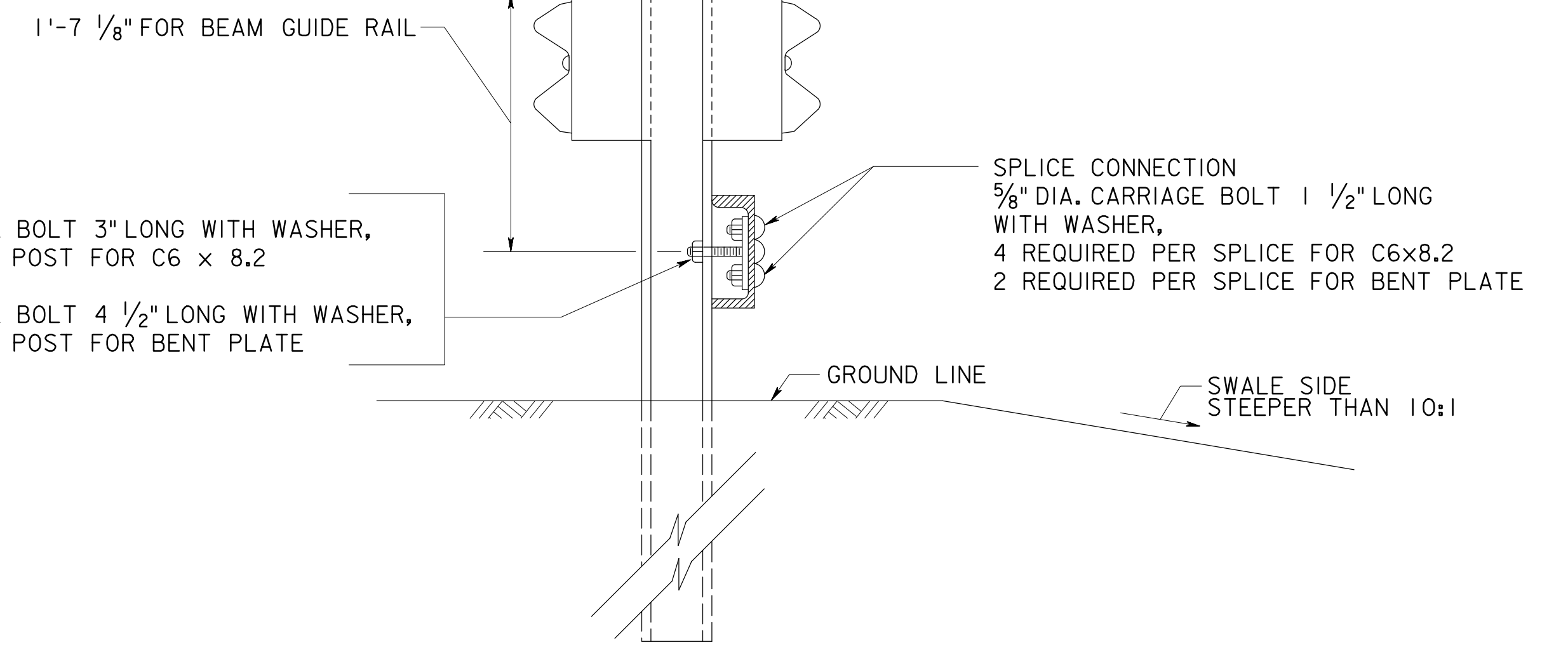
SPLICE PLATE



SECTION B-B

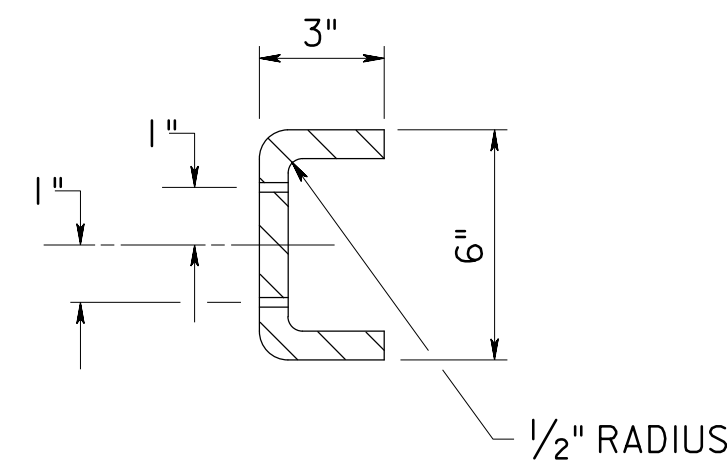
LAP IN DIRECTION OF TRAFFIC

C6 x 8.2

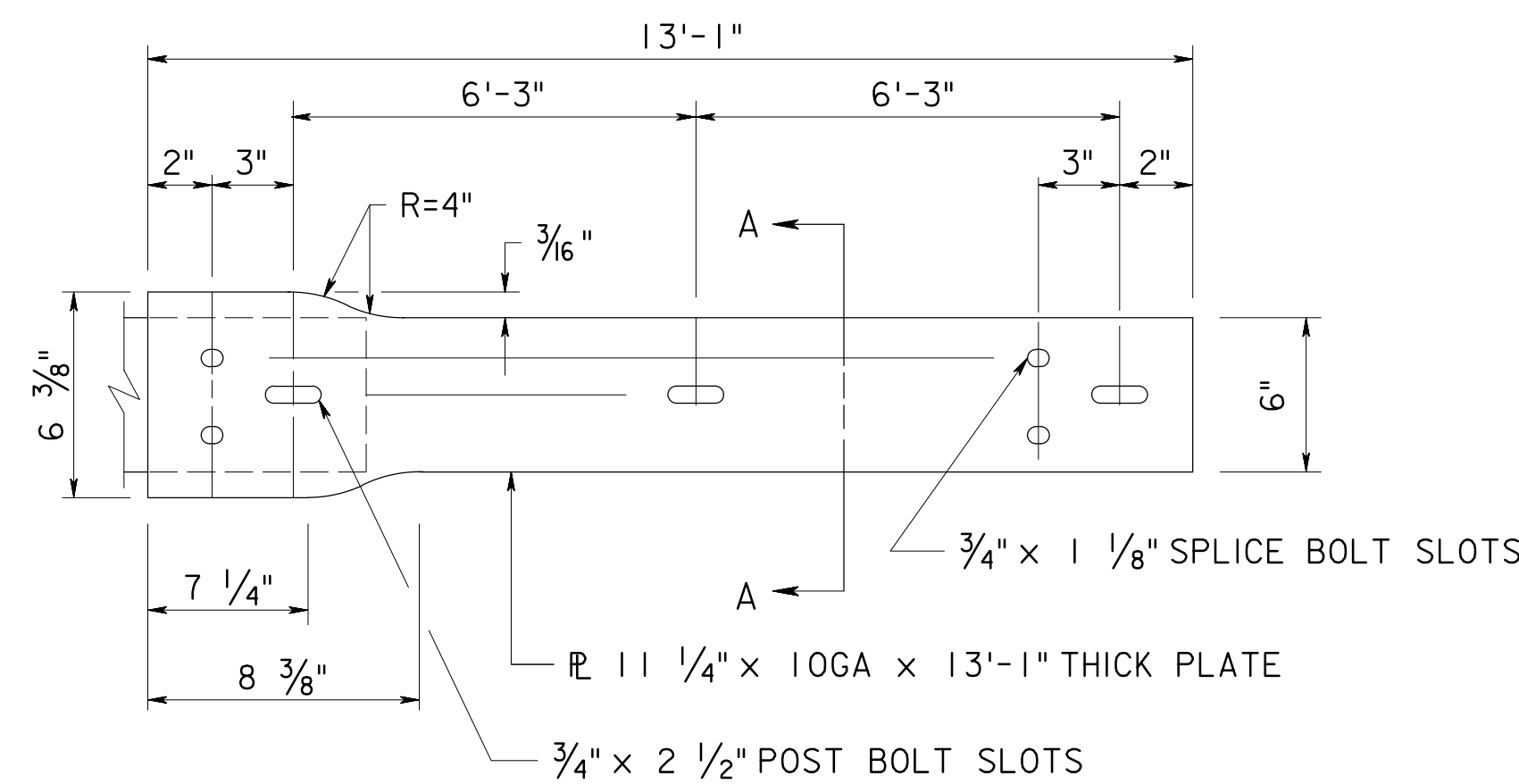


RUB RAIL SECTION IN MEDIAN

SEE NOTE 3



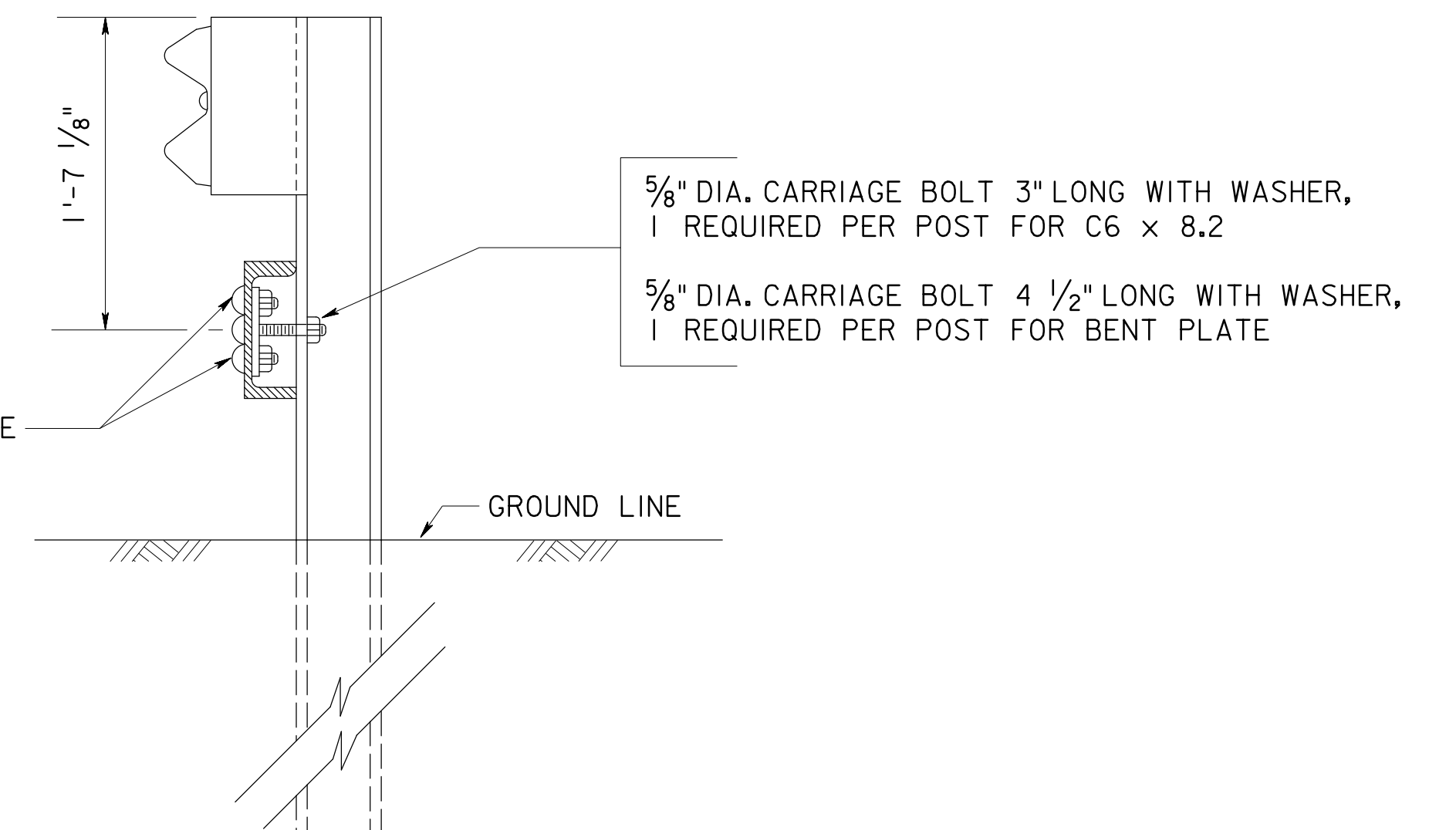
SECTION A-A



BENT PLATE

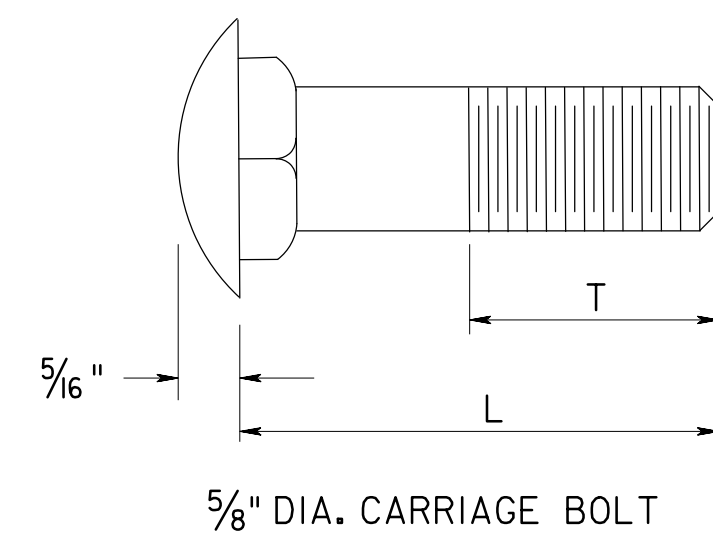
LAP IN DIRECTION OF TRAFFIC

SPLICE CONNECTION
5/8" DIA. CARRIAGE BOLT 1 1/2" LONG WITH WASHER,
4 REQUIRED PER SPLICE FOR C6x8.2
2 REQUIRED PER SPLICE FOR BENT PLATE

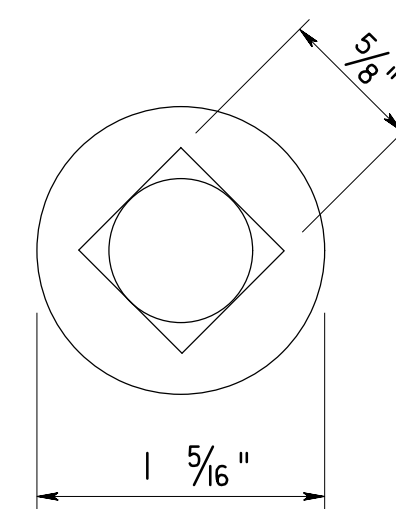


RUB RAIL SECTION AT BURIED GUIDE RAIL TERMINAL

SEE NOTE 3

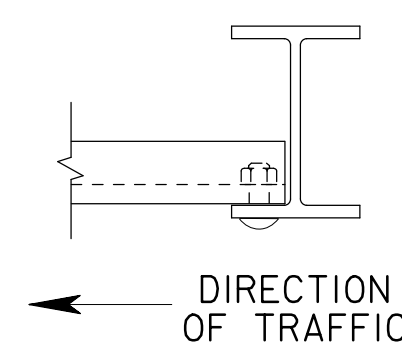


5/8" DIA. CARRIAGE BOLT



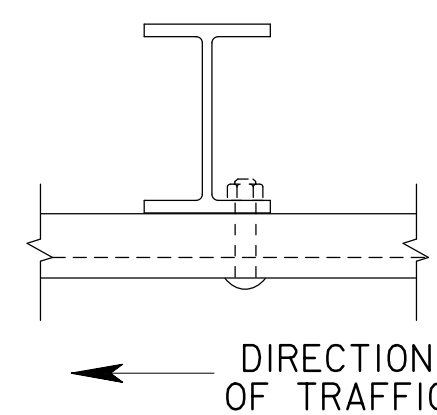
5/8" DIA. HEX NUT

CARRIAGE BOLT DETAIL



RUB RAIL APPROACH END ATTACHMENT DETAIL

SEE NOTE 3



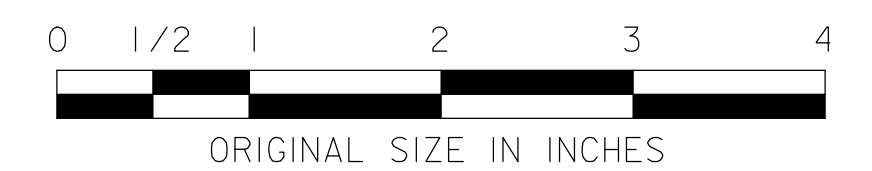
RUB RAIL INTERMEDIATE AND TRAILING END ATTACHMENT DETAIL

SEE NOTE 3

NOTES:

- USE EITHER C6 x 8.2 OR BENT PLATE FOR RUB RAIL.
- C6x8.2 RUB RAIL MAY BE SUPPLIED IN LENGTHS OF 12'-5 3/4" OR 24'-11 3/4".
- SECTION DEPICTS C6x8.2, BENT PLATE USES SIMILAR DETAIL.
- RUB RAIL INSTALLED TO LIMITS INDICATED ON PLANS. WHERE INSTALLED ON MEDIAN GUIDE RAIL, THE RUB RAIL IS TO BE INSTALLED ON THE SWALE SIDE.
- GARDEN STATE PARKWAY RUB RAIL TO BE PRE-STAINED PRIOR TO INSTALLATION TO CREATE A RUSTIC BROWN MATTE FINISH. REFER TO SPECIFICATIONS FOR STAIN TREATMENT.
- ALL RECTANGULAR SLOTS ARE 1/16" x 2". ALL SQUARE HOLES ARE 1/16".
- THE STEEL FOR RUB RAIL AND MISCELLANEOUS HARDWARE SHALL CONFORM TO THE STANDARD SPECIFICATIONS AND ITS AMENDMENTS.

MASH TL-3



ORIGINAL SIZE IN INCHES

NEW JERSEY TURNPIKE AUTHORITY
**NEW JERSEY TURNPIKE
 GARDEN STATE PARKWAY**
 STANDARD DRAWINGS

RUB RAIL

OFFICE OF THE CHIEF ENGINEER
 NEW JERSEY TURNPIKE AUTHORITY
 WOODBRIDGE, NEW JERSEY

STANDARD DRAWING
GR-3

0	ORIGINAL DRAWING	07/21
REV.	DESCRIPTION	DATE