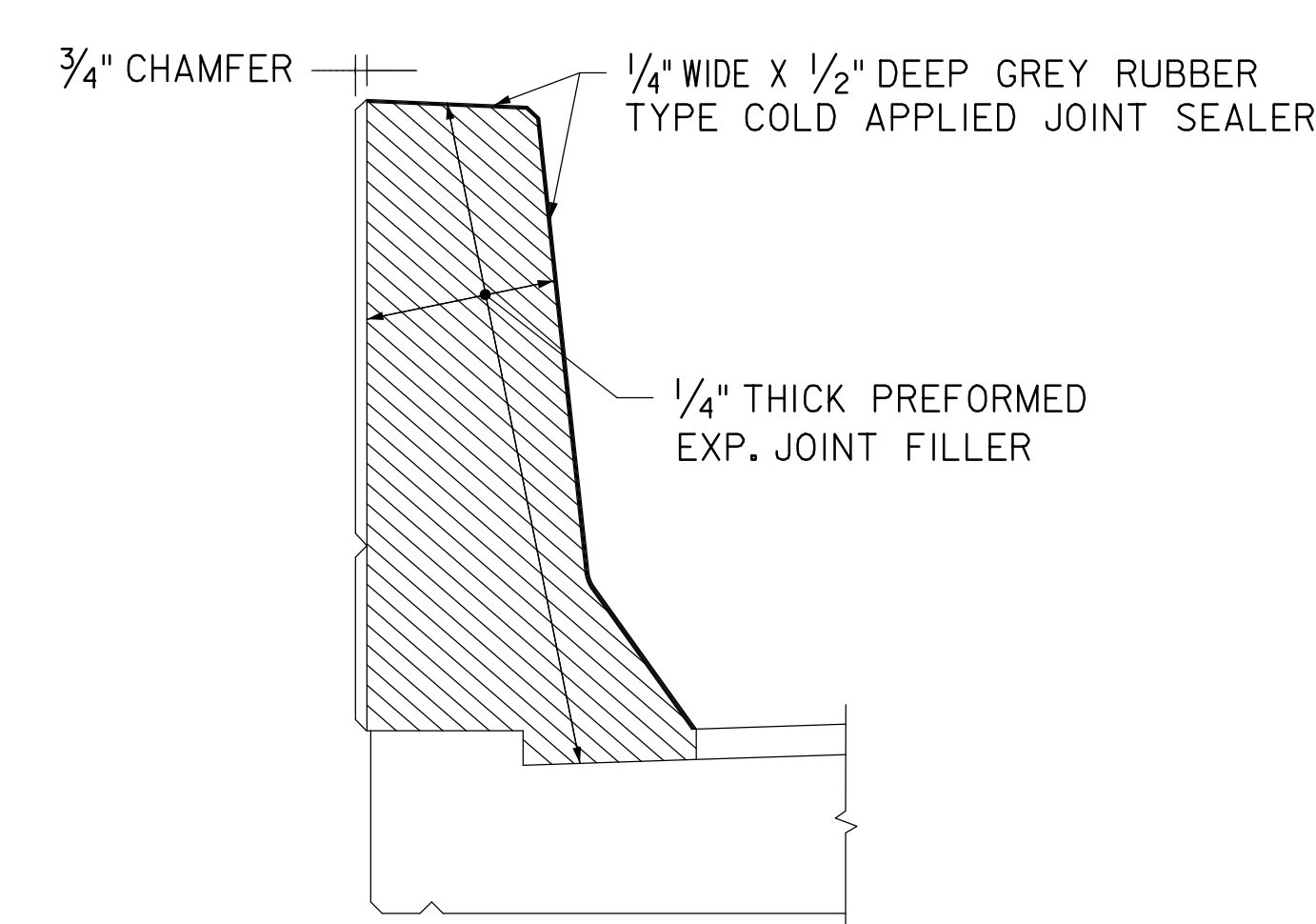
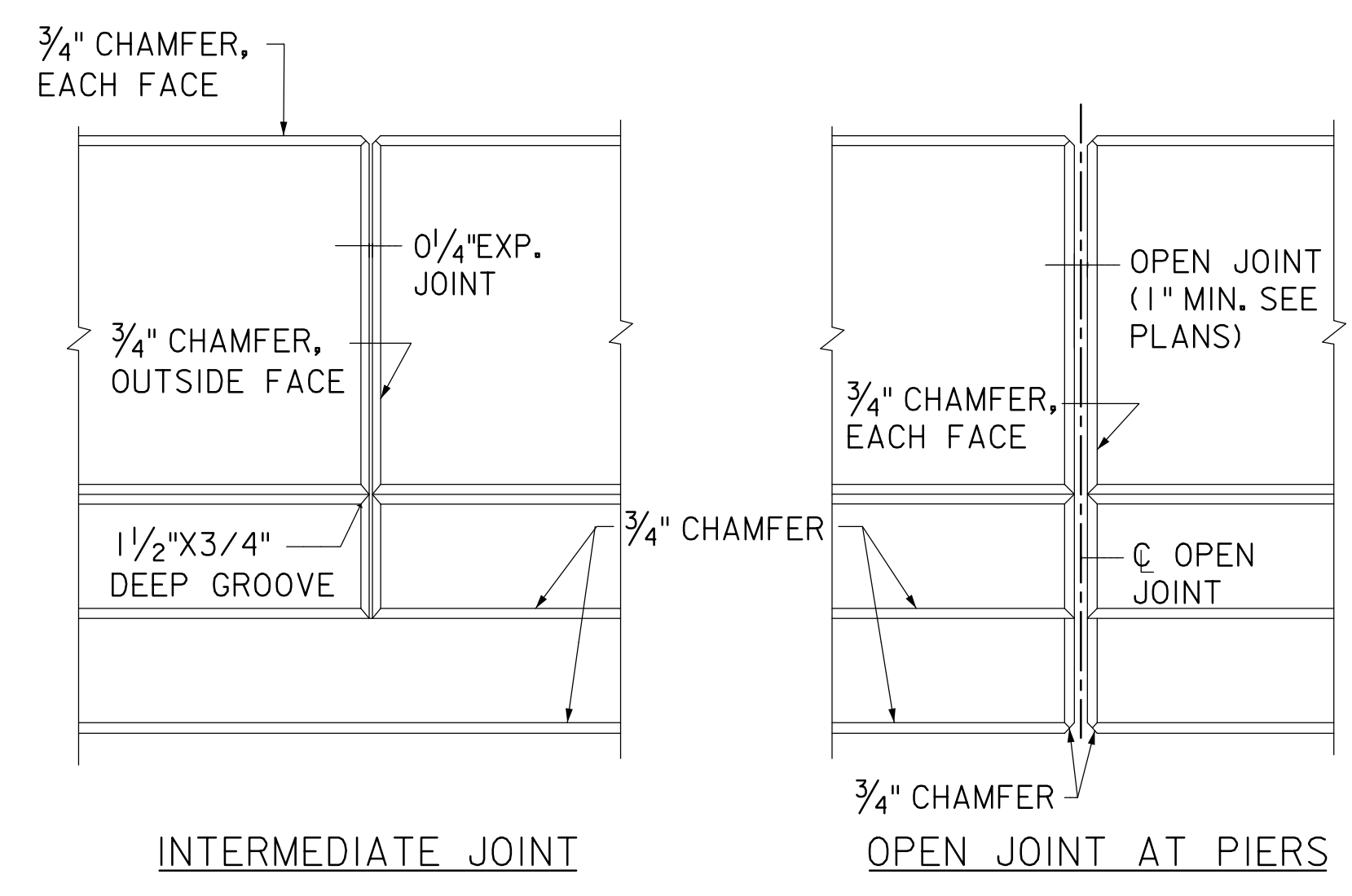


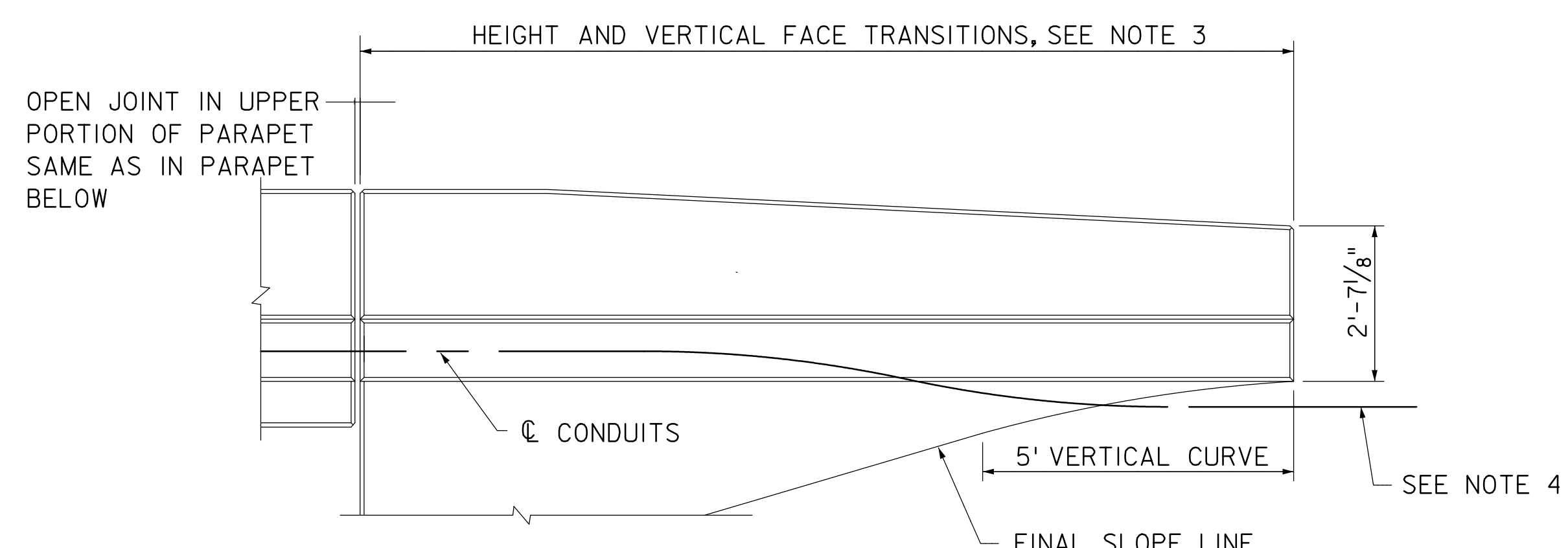
TYPICAL SECTION
1/2" = 1'-0"



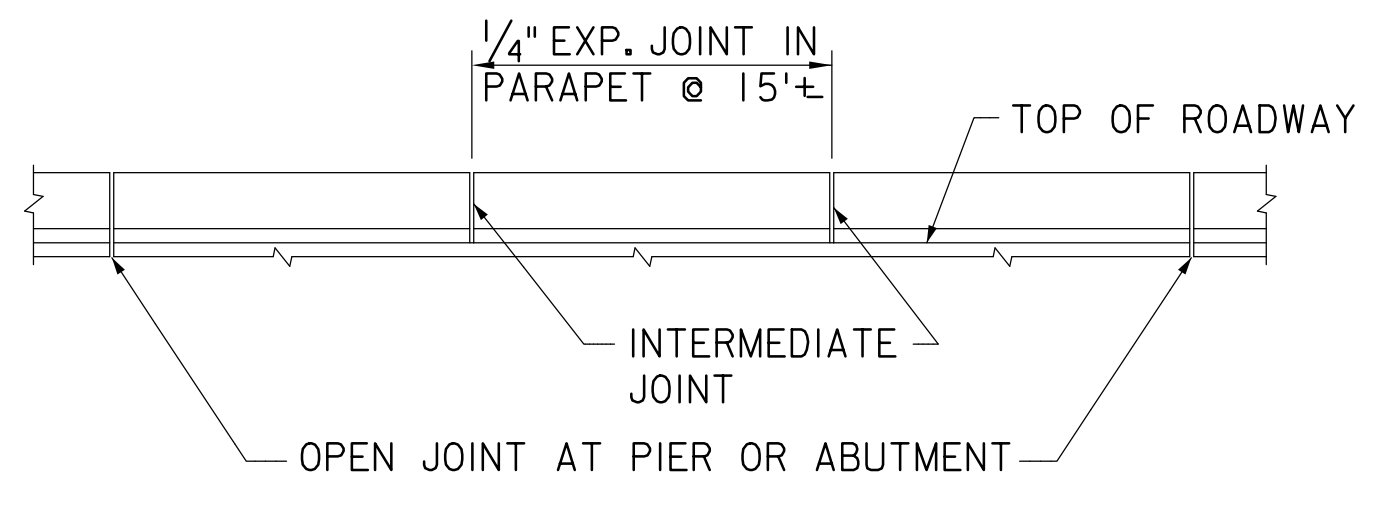
SECTION AT INTERMEDIATE JOINT
1" = 1'-0"



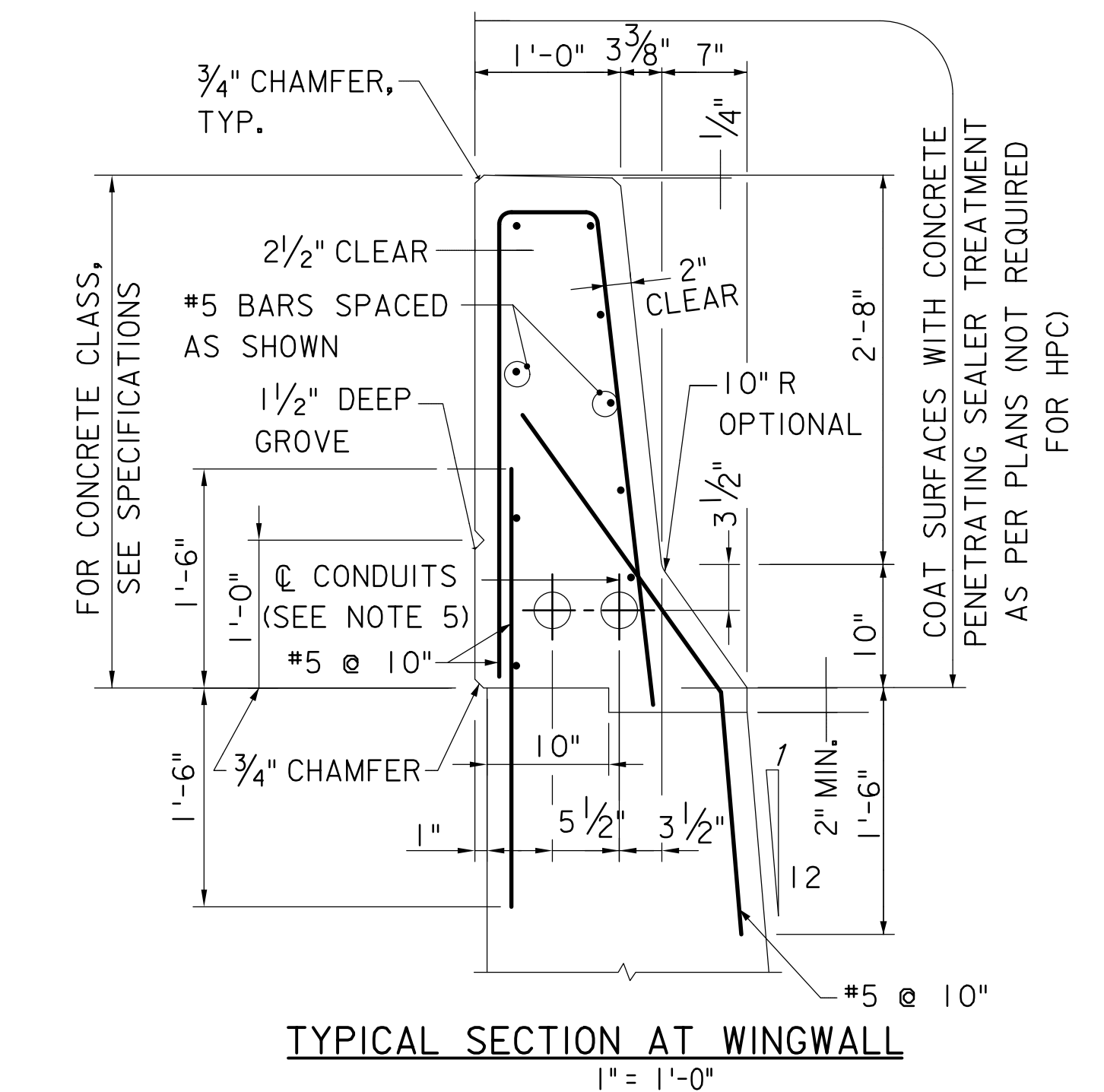
PARAPET DETAILS
1" = 1'-0"



ELEVATION - TYPICAL ABUTMENT WINGWALL
1/2" = 1'-0"



ELEVATION - JOINT LOCATIONS
N.T.S.

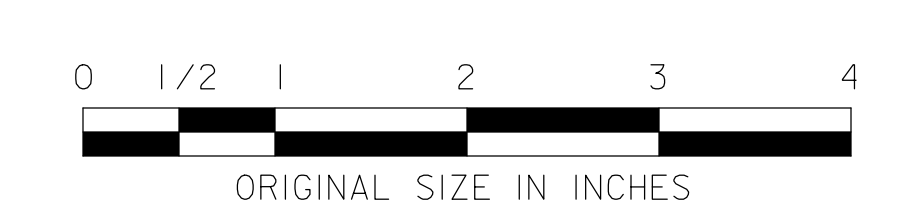


TYPICAL SECTION AT WINGWALL
1" = 1'-0"

NOTES:

1. ALL REINFORCEMENT STEEL IN BARRIER PARAPETS ON BRIDGES, WINGWALLS AND RETAINING WALLS SHALL BE GALVANIZED UNLESS OTHERWISE NOTED IN THE CONTRACT PLANS.
2. JOINTS SHALL BE NORMAL TO GRADE.
3. SEE STANDARD DRAWING GR-13 FOR DETAILS ON TYPE A AND B CONNECTION OF GUIDE RAIL TO PARAPET.
4. CONDUITS TO EXIT WINGWALL END BELOW GRADE. FOR MORE DETAILS, SEE STANDARD DRAWING E-23.
5. CONDUIT LOCATIONS IN PARAPET ARE SUGGESTED, ACTUAL LOCATIONS AS SHOWN ON THE CONTRACT PLANS.

MASH TL-5



NEW JERSEY TURNPIKE AUTHORITY
NEW JERSEY TURNPIKE GARDEN STATE PARKWAY
 STANDARD DRAWINGS

BARRIER PARAPET DETAILS

OFFICE OF THE CHIEF ENGINEER
 NEW JERSEY TURNPIKE AUTHORITY
 WOODBRIDGE, NEW JERSEY

STANDARD DRAWING
BR-7

REV.	DESCRIPTION	DATE
0	REISSUED DRAWING	07/21