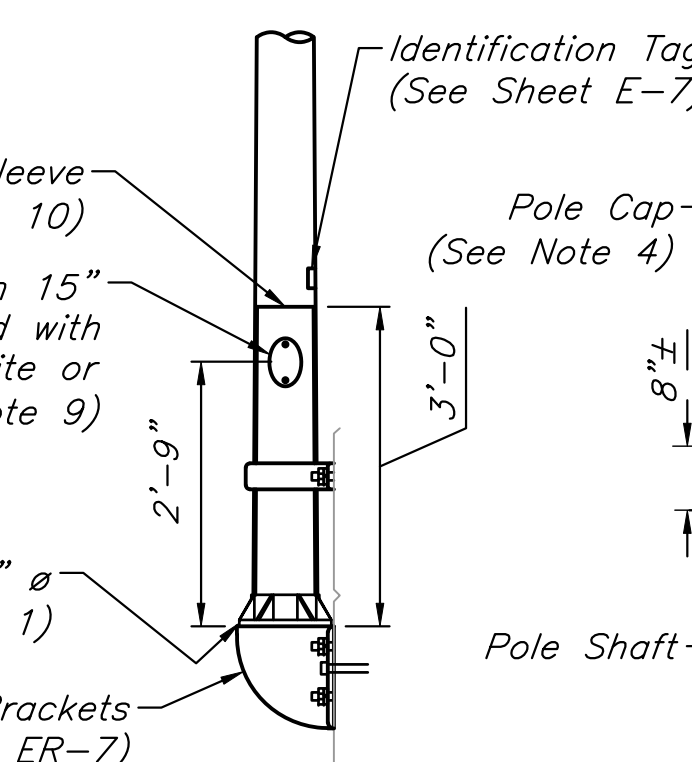


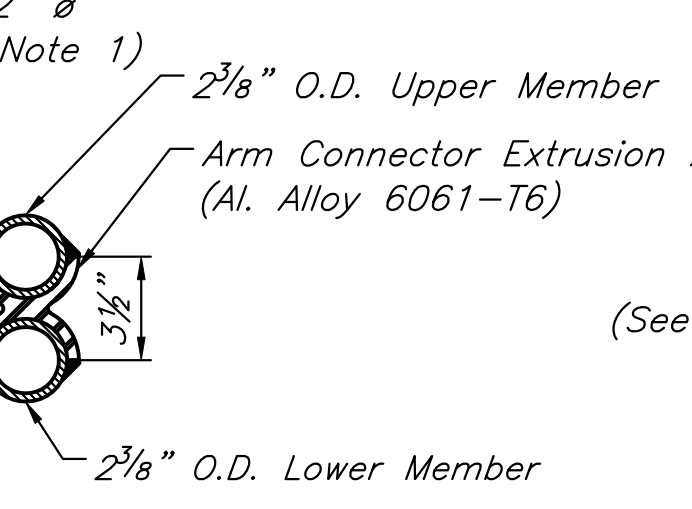
LIGHTING STANDARD SCHEDULE										
TYPES	MTG	LIGHTING STANDARDS				MAX. LUMINAIRE SIZE	WEIGHT	PROJ. AREA SQ. FT.	50#	1.2
		BRACKET ARM NO.	LENGTH	POLE SHAFT LENGTH	POLE SHAFT TAPER					
TYPE 1	TB-A	1	15'	26'-3"	8"x4"	.250"				
TYPE 2	TB-A	1	8'	26'-3"	8"x4"	.250"				
TYPE 3	MB	1	15'	27'	8"x4"	.250"				
TYPE 4	MB	1	8'	27'	8"x4"	.250"				
TYPE 5	TB-A	2	15'	26'-3"	8"x4"	.250"				
TYPE 6	TB-A	2	8'	26'-3"	8"x4"	.250"				

If you use this Standard Drawing:
 You also need _____
 You may need ER-01, ER-06

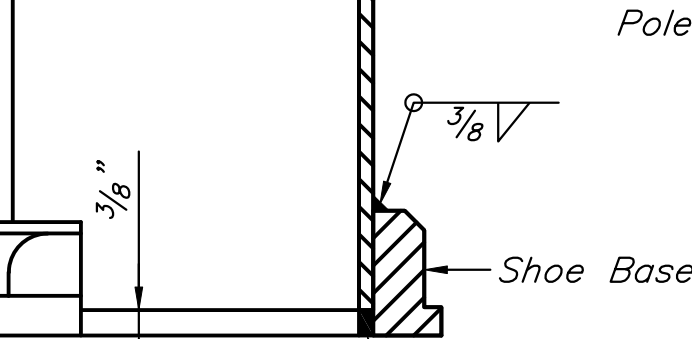
END CAP DETAIL - B



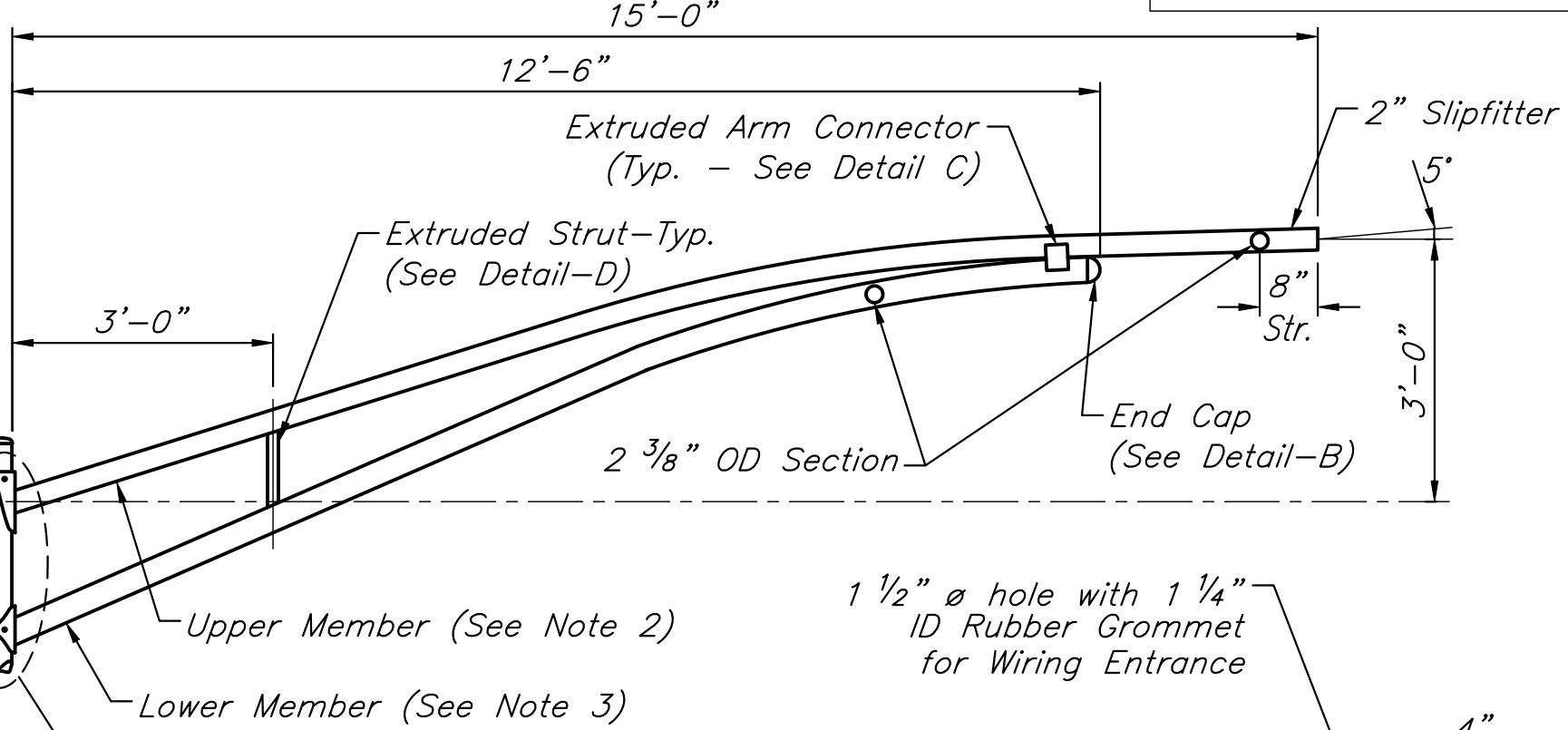
TYPES 3 & 4 LIGHTING STANDARDS NTS



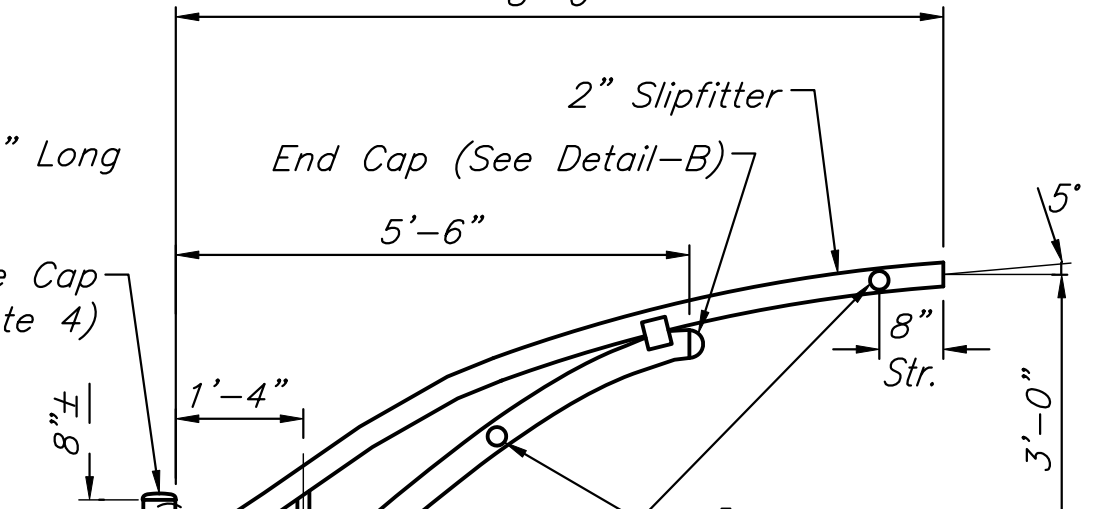
DETAIL - C NTS



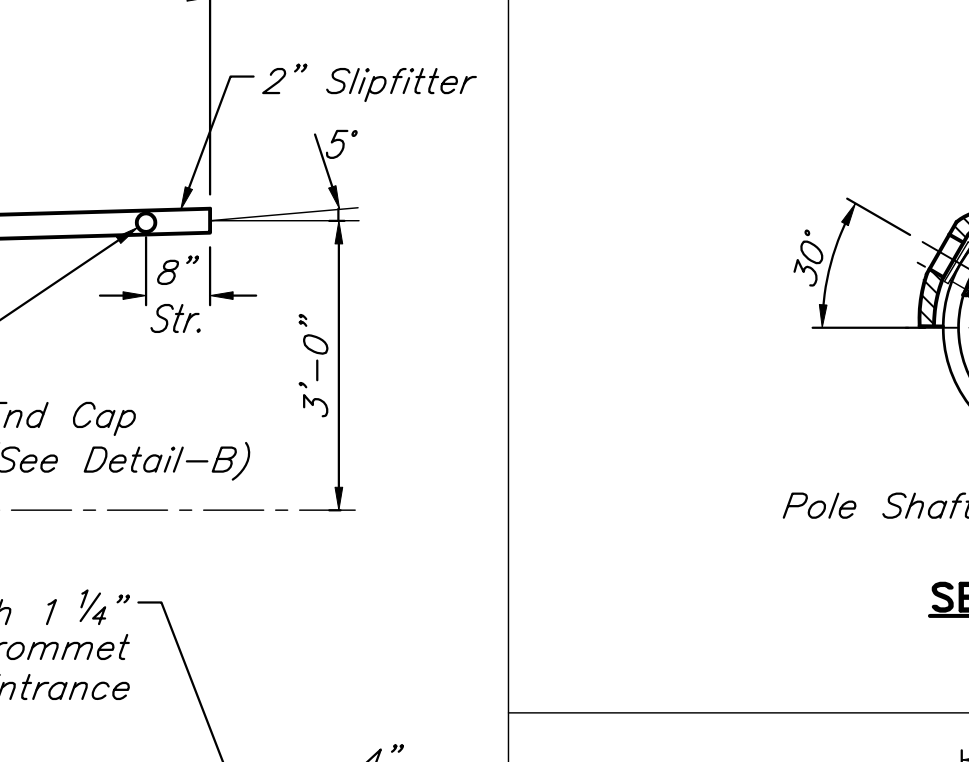
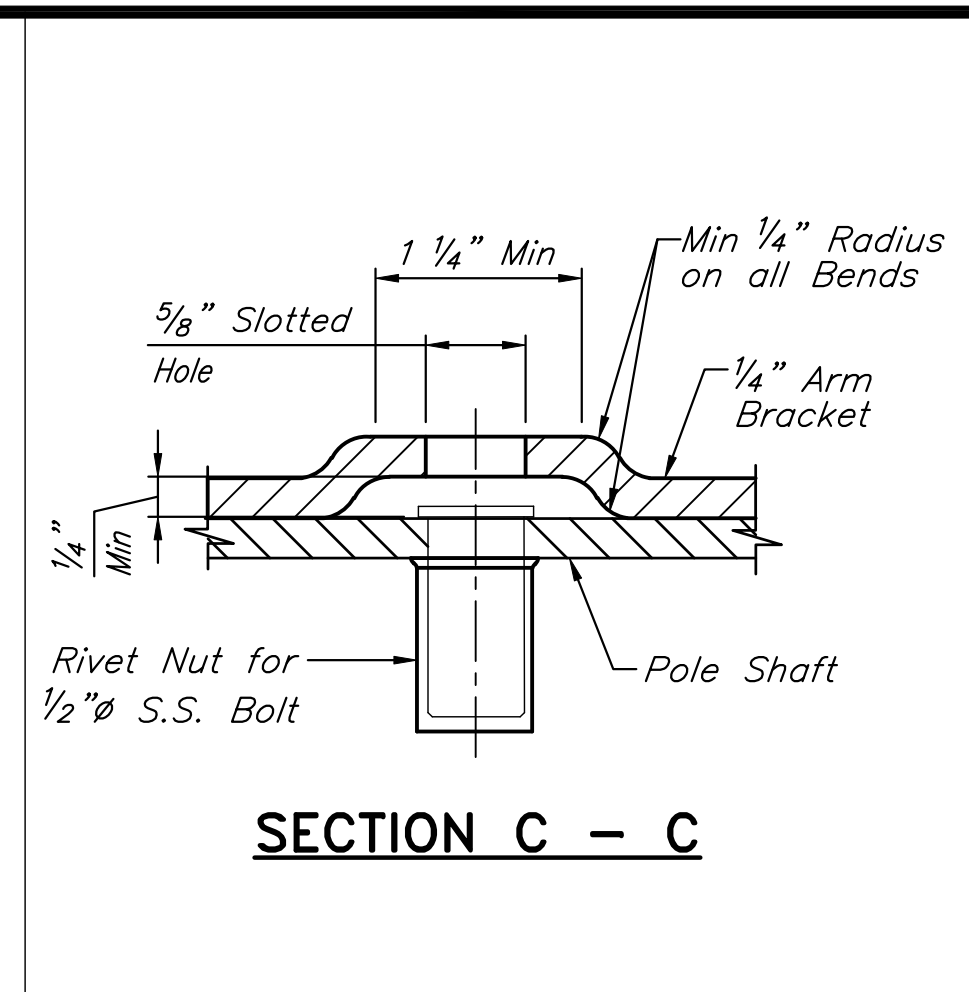
BASE WELDING DETAIL



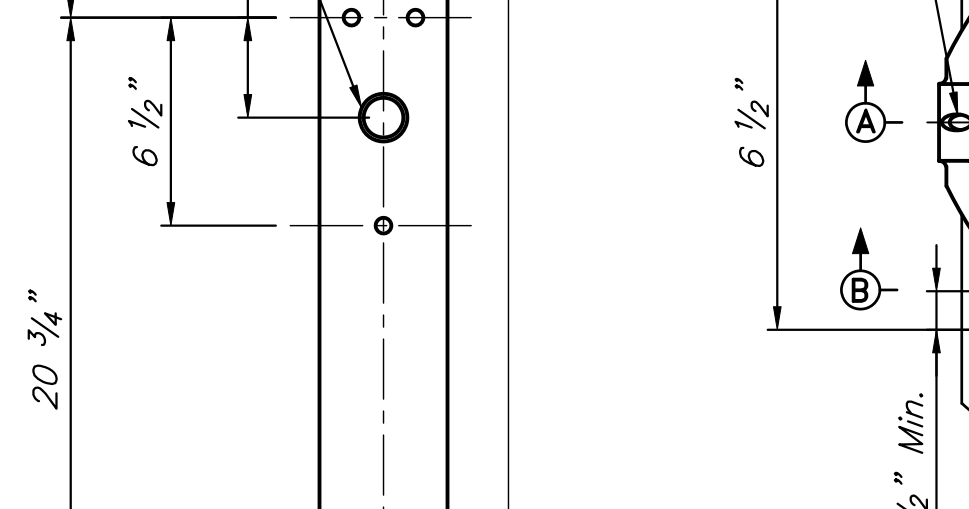
15 FT. BRACKET ARM DETAIL



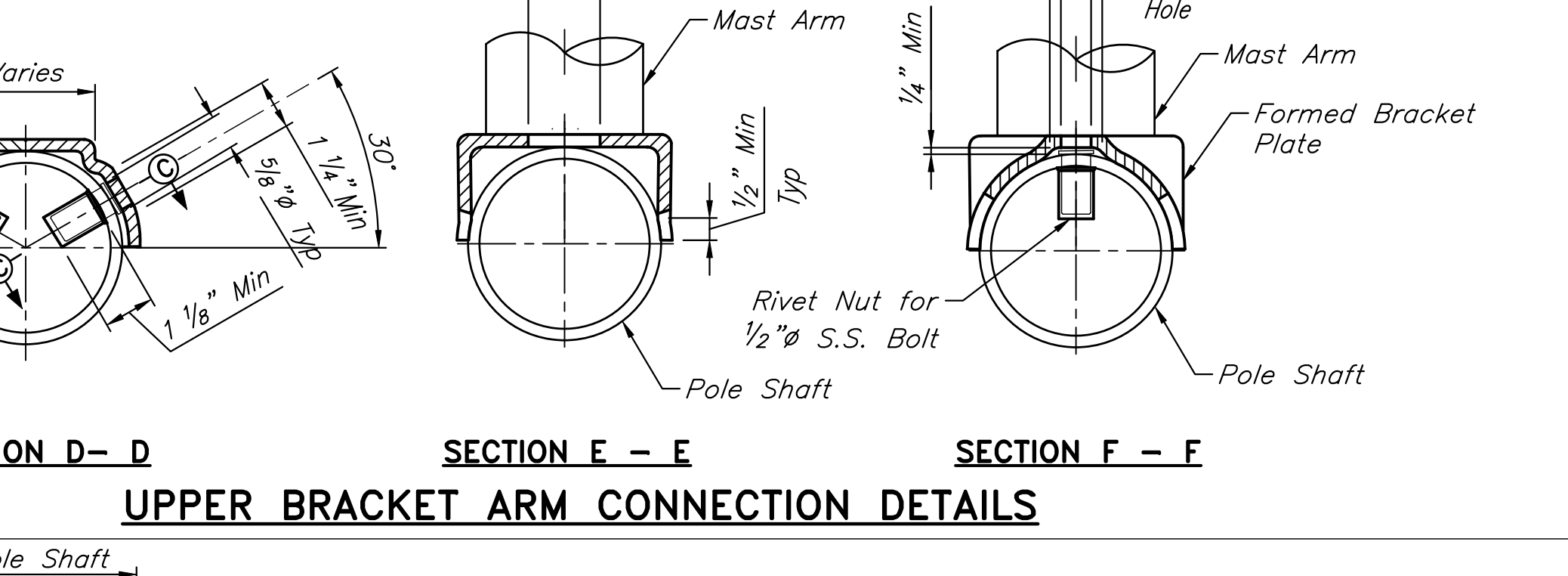
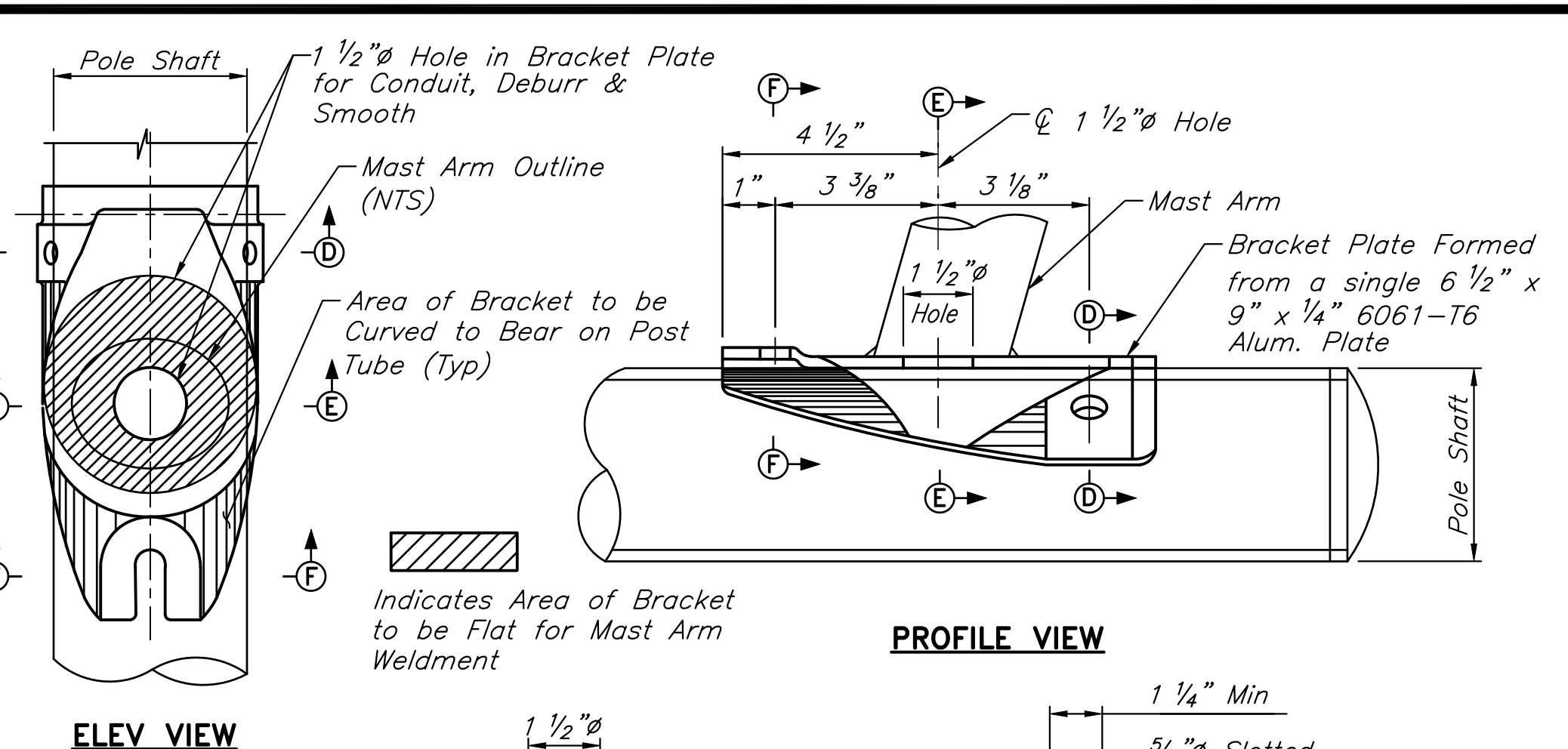
8 FT. BRACKET ARM DETAIL



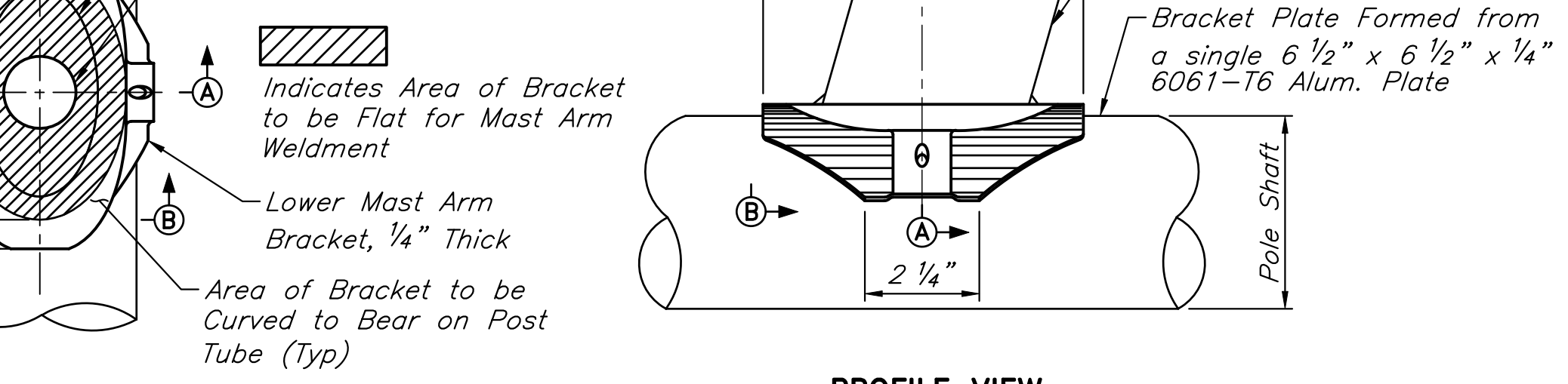
BRACKET ARM REMOVED



DETAIL - D



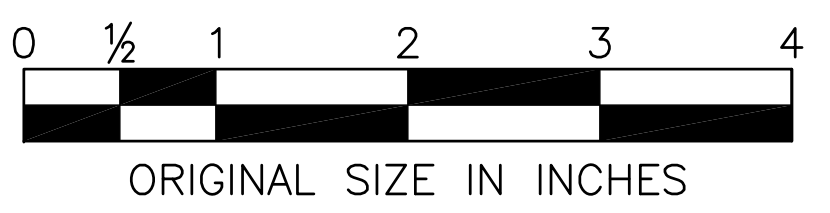
UPPER BRACKET ARM CONNECTION DETAILS



LOWER BRACKET ARM CONNECTION DETAILS

- NOTES**
- Connecting bolts shall be 1" hex head bolts with nuts, lockwashers and flat washers, all stainless steel (4 req'd).
 - Upper member-3" O.D. tube with .125" (Min.) wall thickness, tapered to 3 1/2" x 2 3/8" elliptical section (Al Alloy 6063-T6).
 - Lower member-3 1/2" O.D. tube with .125" (Min.) wall thickness, tapered to 4 1/4" x 2 1/8" elliptical section (Al Alloy 6063-T6).
 - Cast pole cap (Al Alloy 356) attached with #10-24NC2-1/2" hex head stainless steel screws with cup point.
 - The lighting standard assembly shall be certified to meet current AASHTO breakaway criteria for structural supports utilizing an approved transformer base.
 - Transformer base door (Al Alloy 356) shall be placed in the rear for single arm lighting standards and on the side for twin arm lighting standards.

- The details shown here are intended to define acceptable minimum criteria for the fabrication of Mast Arm Bracket Plates. The fabricator shall be responsible for the design and construction of the Mast Arm Brackets. All Mast Arm Bracket designs shall be submitted to the General Consultant as fully detailed Shop Drawings for review. If the design meets all required standards, it will be added to the Schedule of Approved Lighting Standards, on Drawing ER-11.
- All components submitted for use on NJTA projects must be fully interchangeable and similar in quality, in all respects with arms and bases shown herein. A comprehensive review and final determination for approval of all lighting standard equipment will be made by the Authority's Engineering Department prior to manufacture or use.
- A reinforced flush handhole is required on all bridge-mounted (MB) lighting standards and shall be located one foot from top of parapet. When located behind chain link fence, the hand hole shall be located one foot above the fence. A fiberglass handhole cover shall be used. It shall be modified for UV resistance.
- Tight-fitted 0.188" thick reinforcing sleeve (Alloy 6063-T6) welded to pole shaft.
- All stainless steel hardware shall be Type 304.



MADE	BY	DATE
EMG	EMG	05/2009
TRACED	BY	DATE
MDC	MDC	05/2009
CHECKED	BY	DATE
EMG	EMG	05/2009
SUPERVISED	BY	DATE
ALB	ALB	05/2009

APP. NO.	DATE	REVISION
0	05/2009	ORIGINAL DRAWING

NEW JERSEY TURNPIKE AUTHORITY
NEW JERSEY TURNPIKE
 LIGHTING STANDARD TYPE 1-6 DETAILS
HNTB 145 RT. 46 WEST, SUITE 400, WAYNE, NJ 07470 - CD# 2462800070
ANTHONY L. BARTELLO
 N.J.P.E. License No. GE 45842
STANDARD DRAWING ER-03