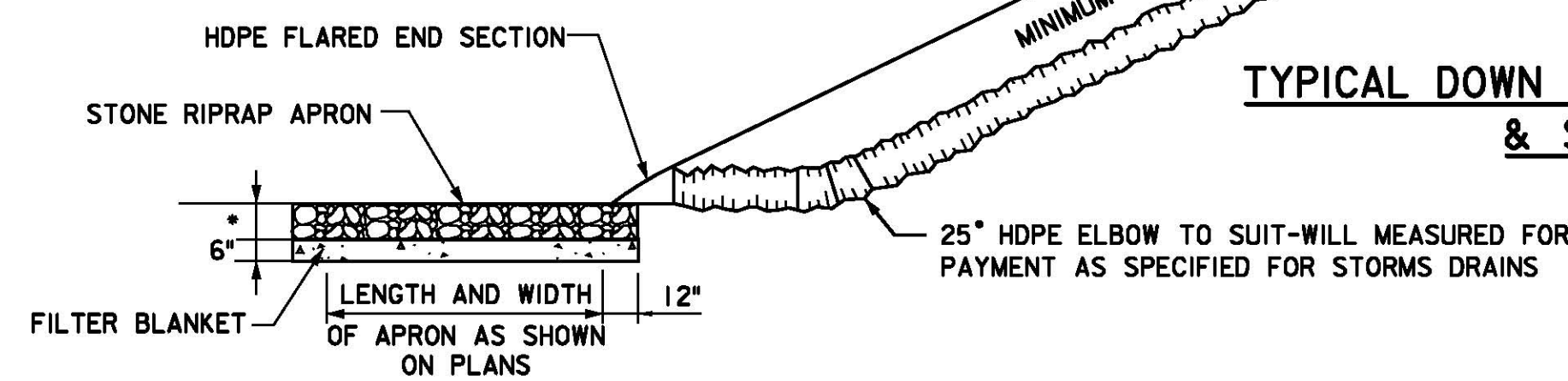


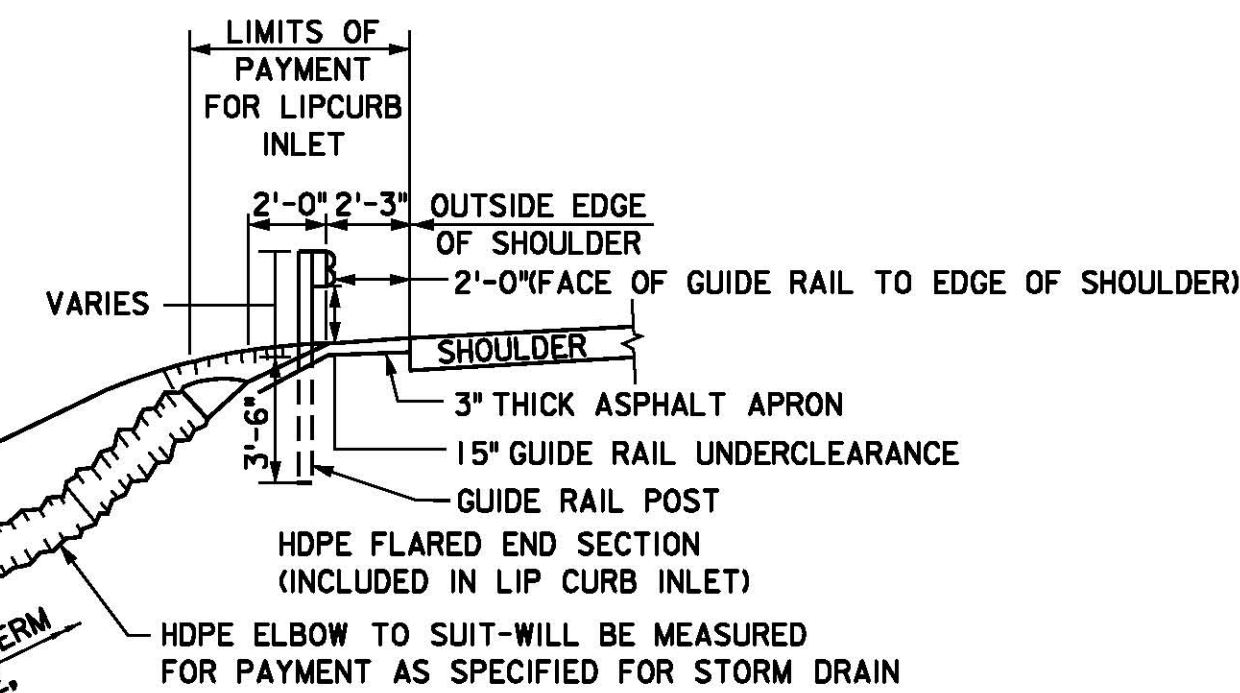
**TYPICAL DOWN SLOPE DRAIN AT
INTERCEPTOR DITCH & STONE RIPRAP APRON**

TYPICAL SECTION - INTERCEPTOR DITCH

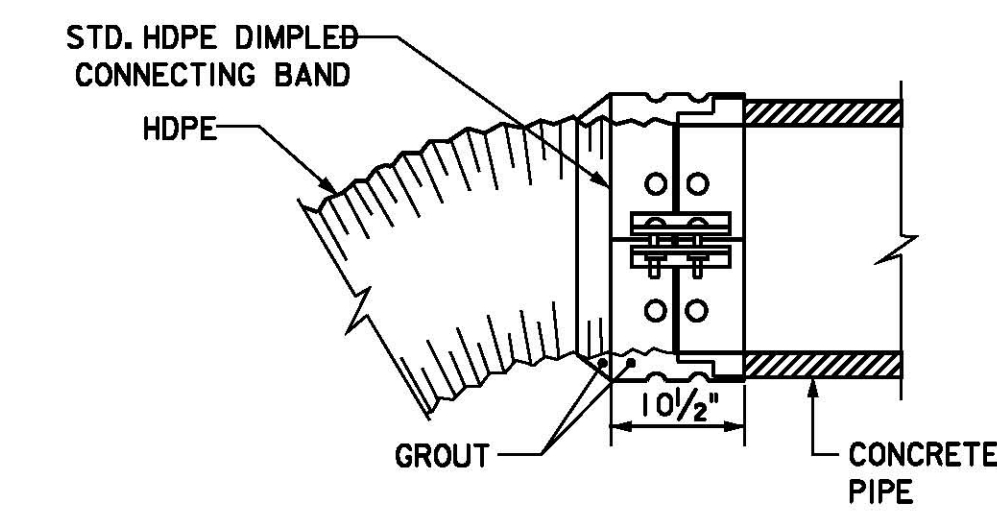


**TYPICAL DOWN SLOPE DRAIN AT LIP CURB INLET
& STONE RIPRAP APRON**

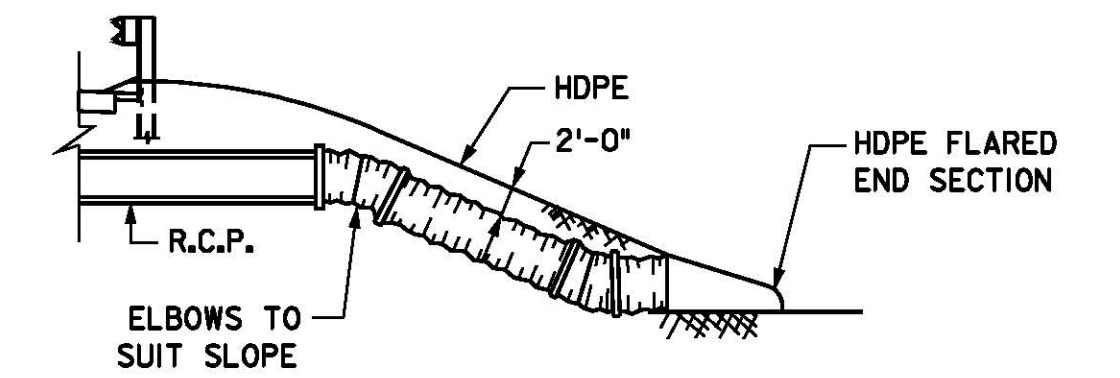
NOTES:
IF CALLED FOR SUPPLEMENTAL SPECIFICATIONS, FILTER FABRIC IS TO BE USED IN LIEU OF FILTER BLANKET, FOR THICKNESS, GRADATION AND PAYMENT OF STONE RIPRAP APRON, SEE STD. DWG. DR-8.



NOTES:
1. ALL REINFORCING TO BE WIRE MESH 6"x6", #10 X #10.
2. FOR DETAILS OF HDPE FLARED END SECTION, SEE STD. DWG. DR-4.
3. STONE RIPRAP APRONS TO BE FURNISHED ONLY WHERE INDICATED ON THE PLAN SHEETS.

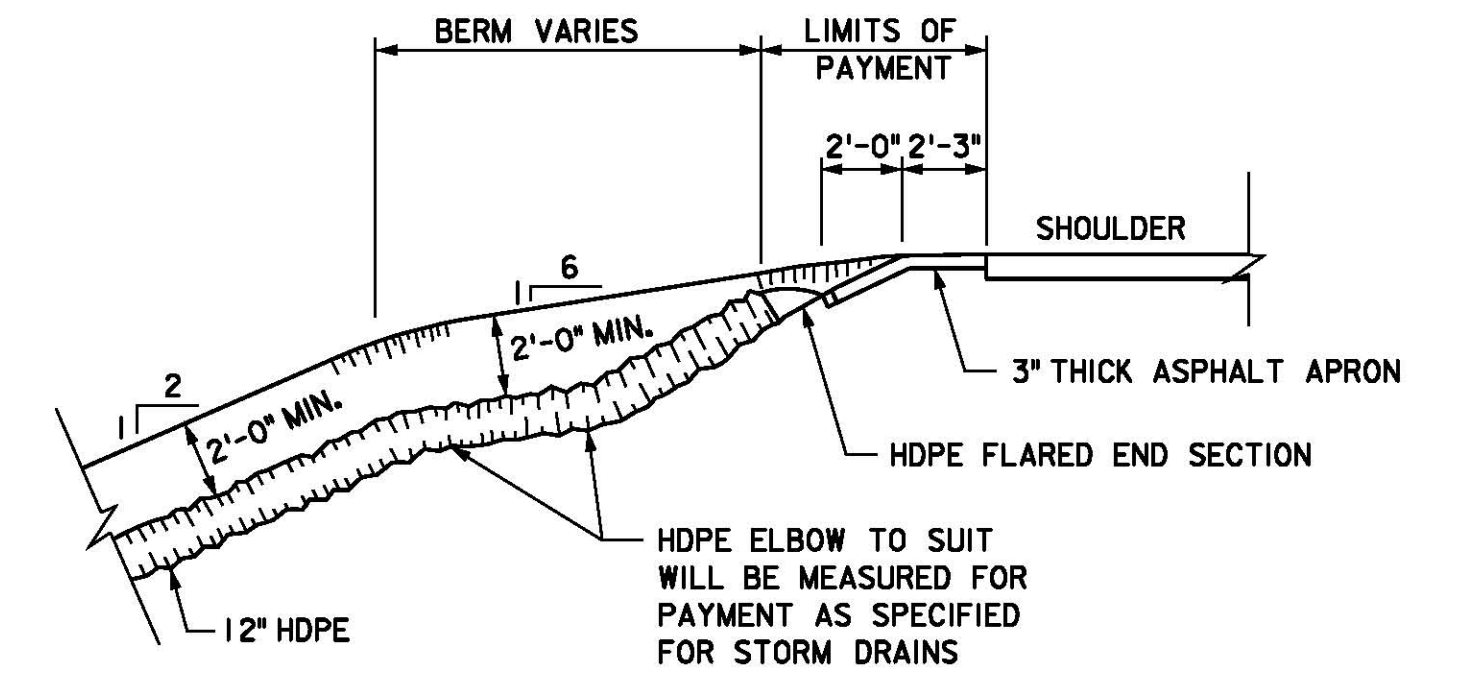


TYPICAL CONNECTION OF HDPE OUTLET IN SLOPES
(FOR HDPE OUTLET DRAIN IN SLOPE, AND FOR SPLICING NEW PIPE ONTO EXISTING DRAINS)

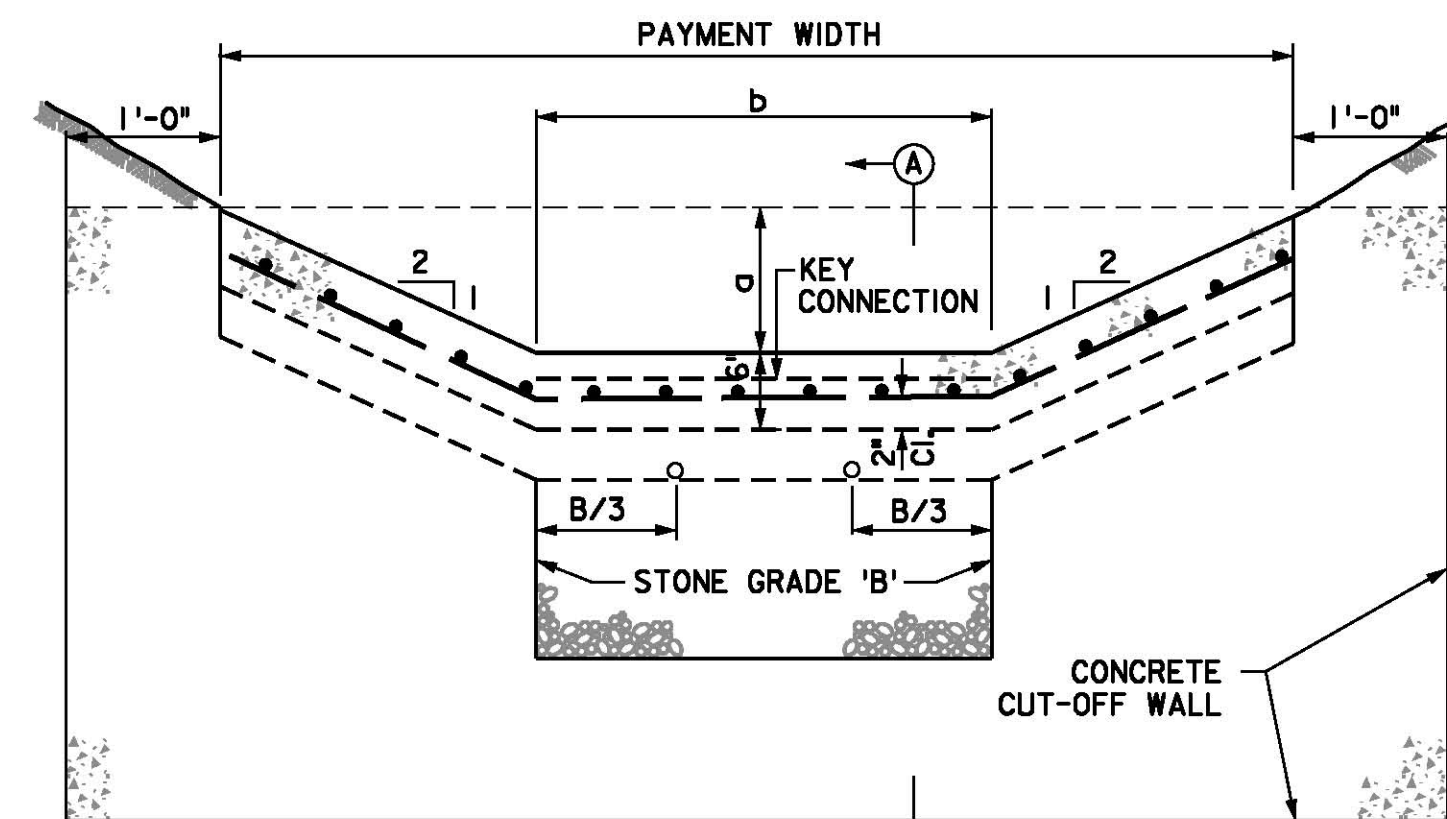


TYPICAL HDPE OUTLET IN SLOPES

NOTE:
SEE DETAIL FOR CONNECTION OF HDPE TO R.C.P.

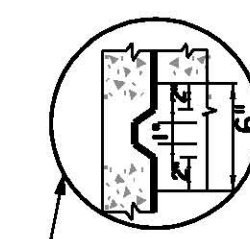


WIDE BERM ALTERNATE

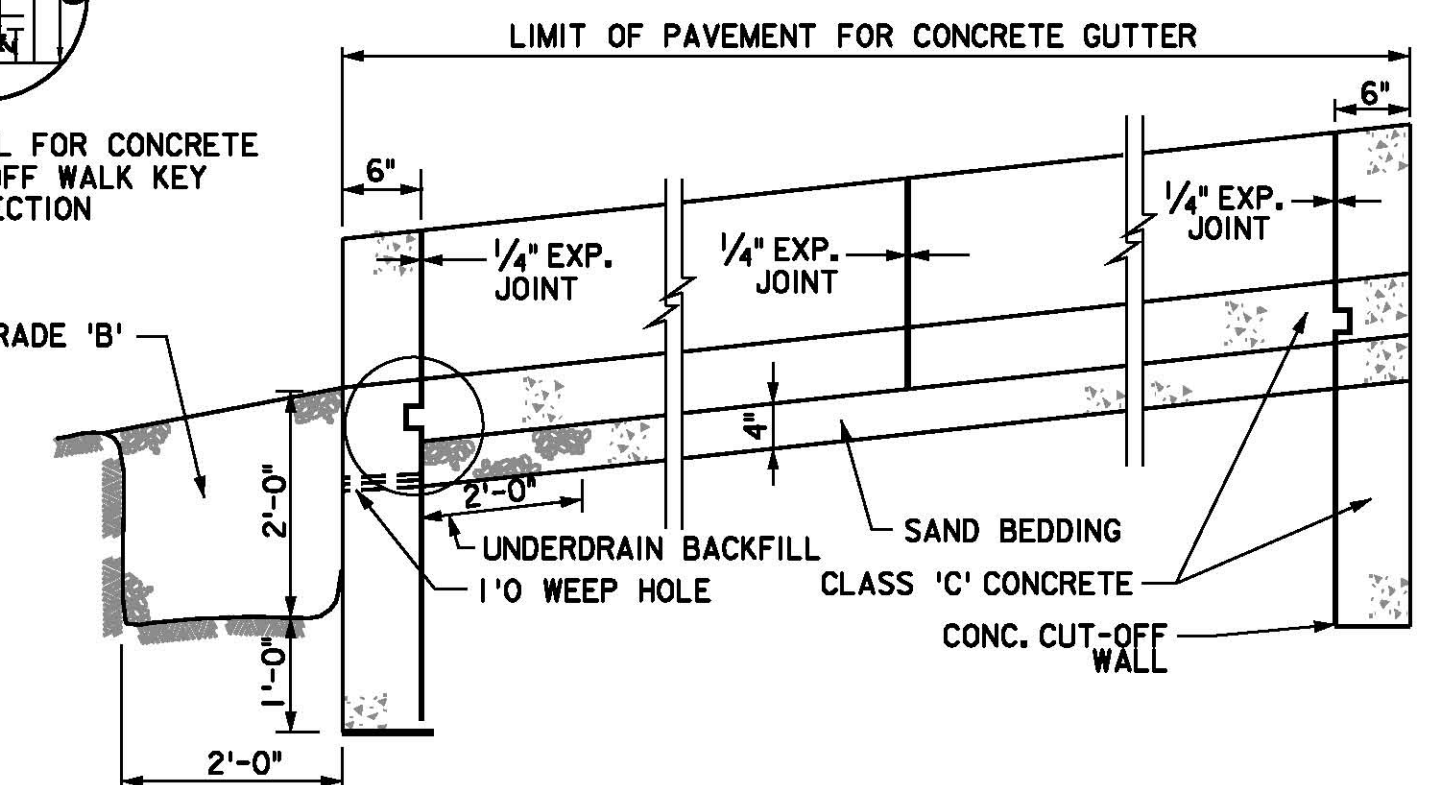


ELEVATION

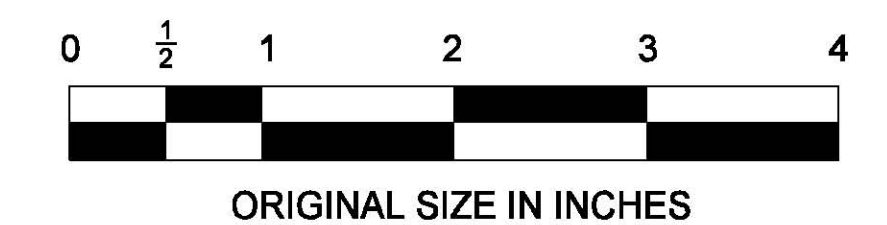
CONCRETE GUTTER



DETAIL FOR CONCRETE CUT-OFF WALK KEY CONNECTION

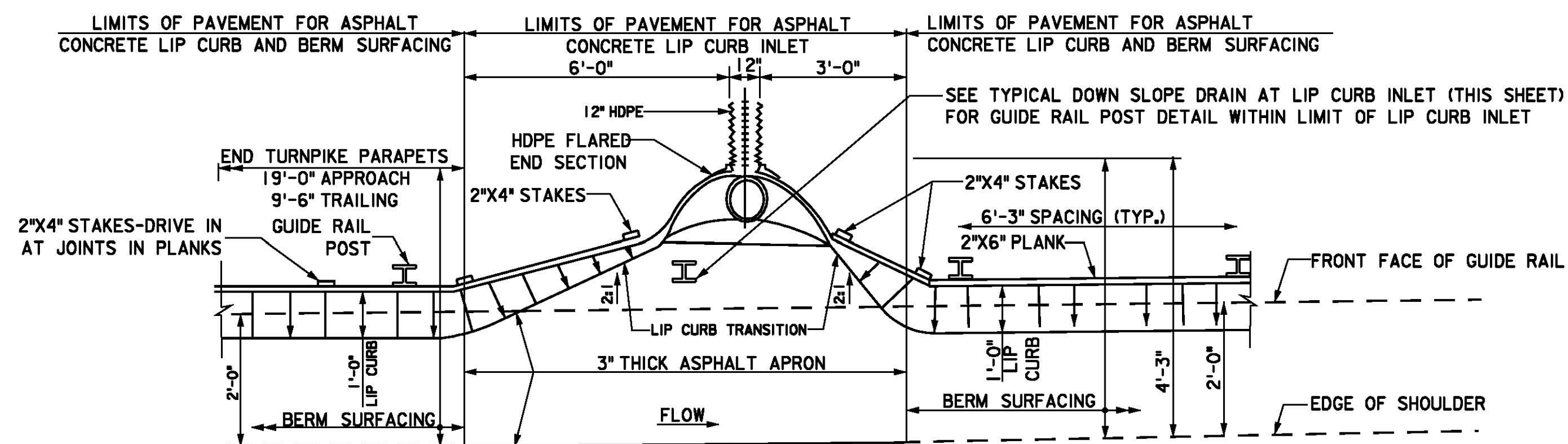


SECTION A-A



TYPE	DIMENSIONS	
	a	b
A	6"	1'-10"
B	1'-0"	2'-0"
C	1'-0"	2'-6"
D	1'-0"	3'-0"
E	1'-0"	3'-6"
F	1'-0"	4'-0"
G, etc.	.	.

• FOR DIMENSIONS SEE CONSTRUCTION DETAILS



ASPHALT CONCRETE LIP CURB INLET

NOTE:
1. FOR ASPHALT LIP CURB DETAIL, SEE STD. DWG. CU-2.
2. FOR LIMIT OF BERM SURFACING SEE PLANS.
3. HIGH DENSITY POLYETHYLENE (HDPE) PIPE AND FLARED END SECTIONS MAY BE PERMITTED IN LIEU OF HDPE.

App.	No.	DATE	REVISION
		04/09	ORIGINAL DRAWING

CONTRACT NO.

OFFICE OF THE CHIEF ENGINEER

2009 STANDARD
DRAWING

DR-5

SHEET NO.

OF