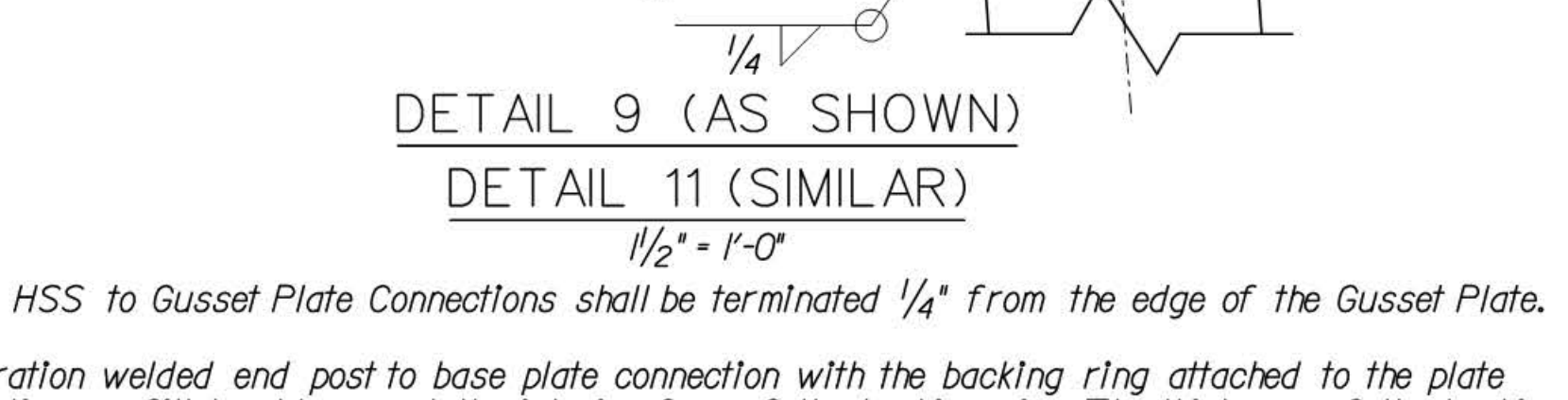
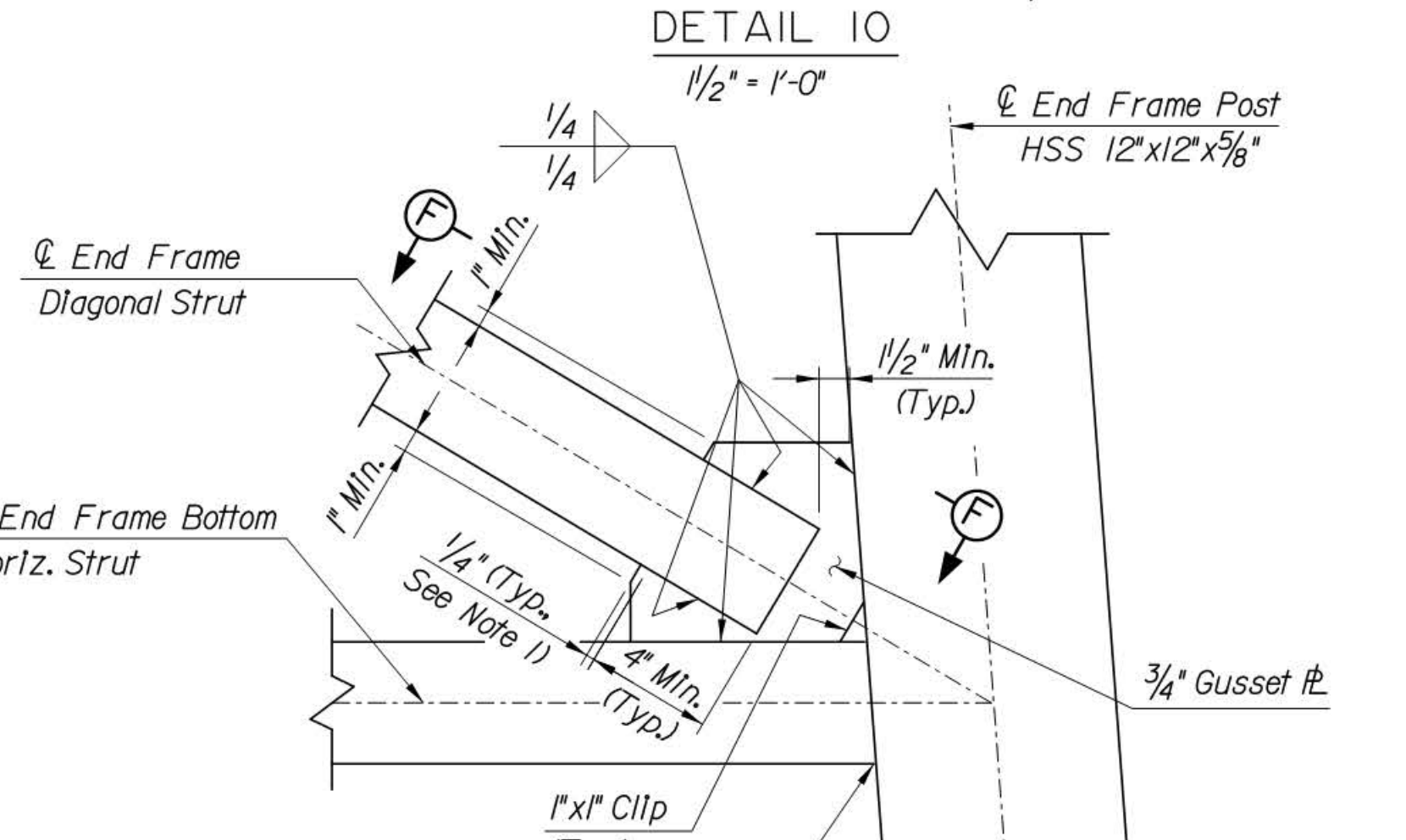
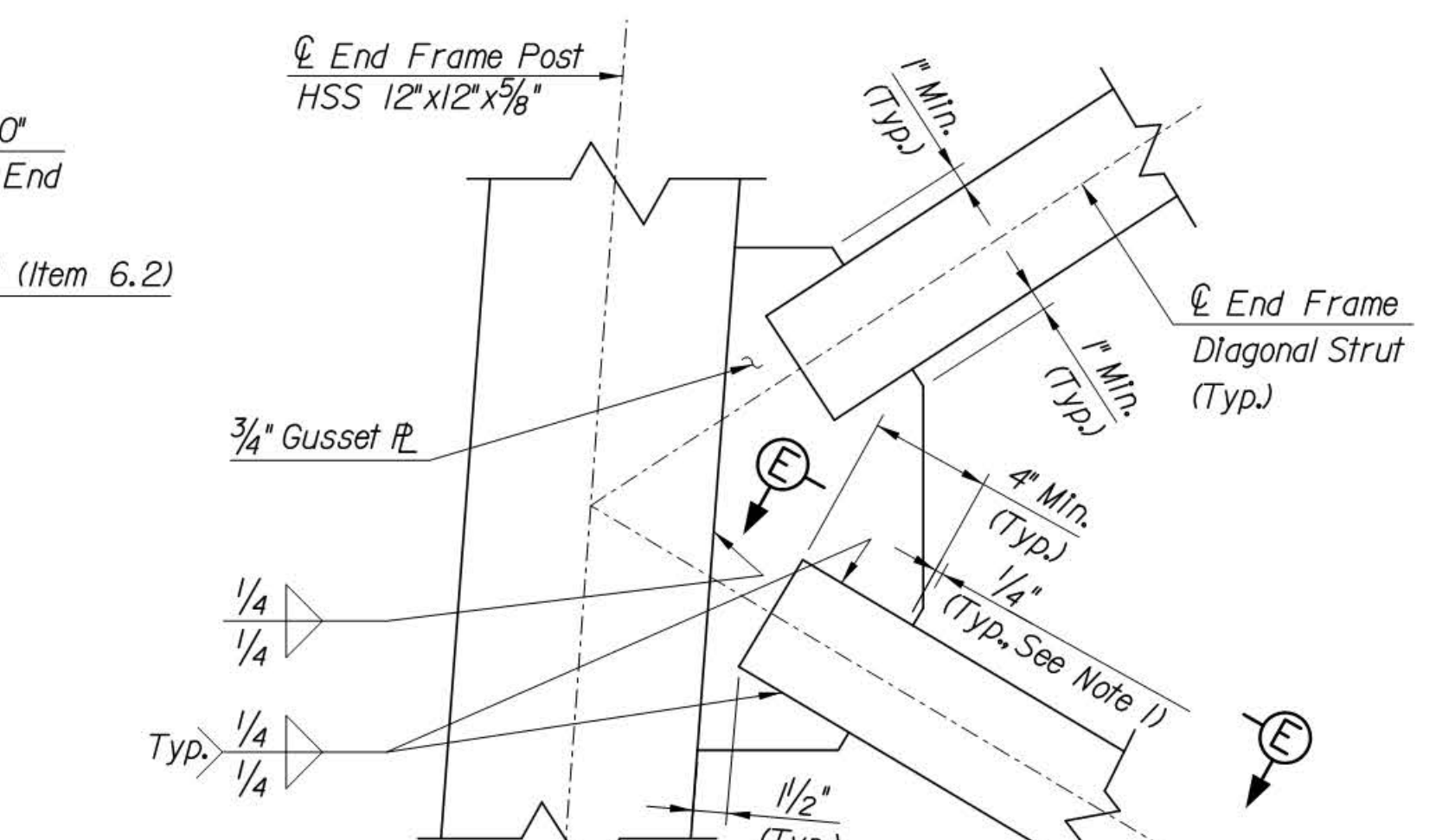
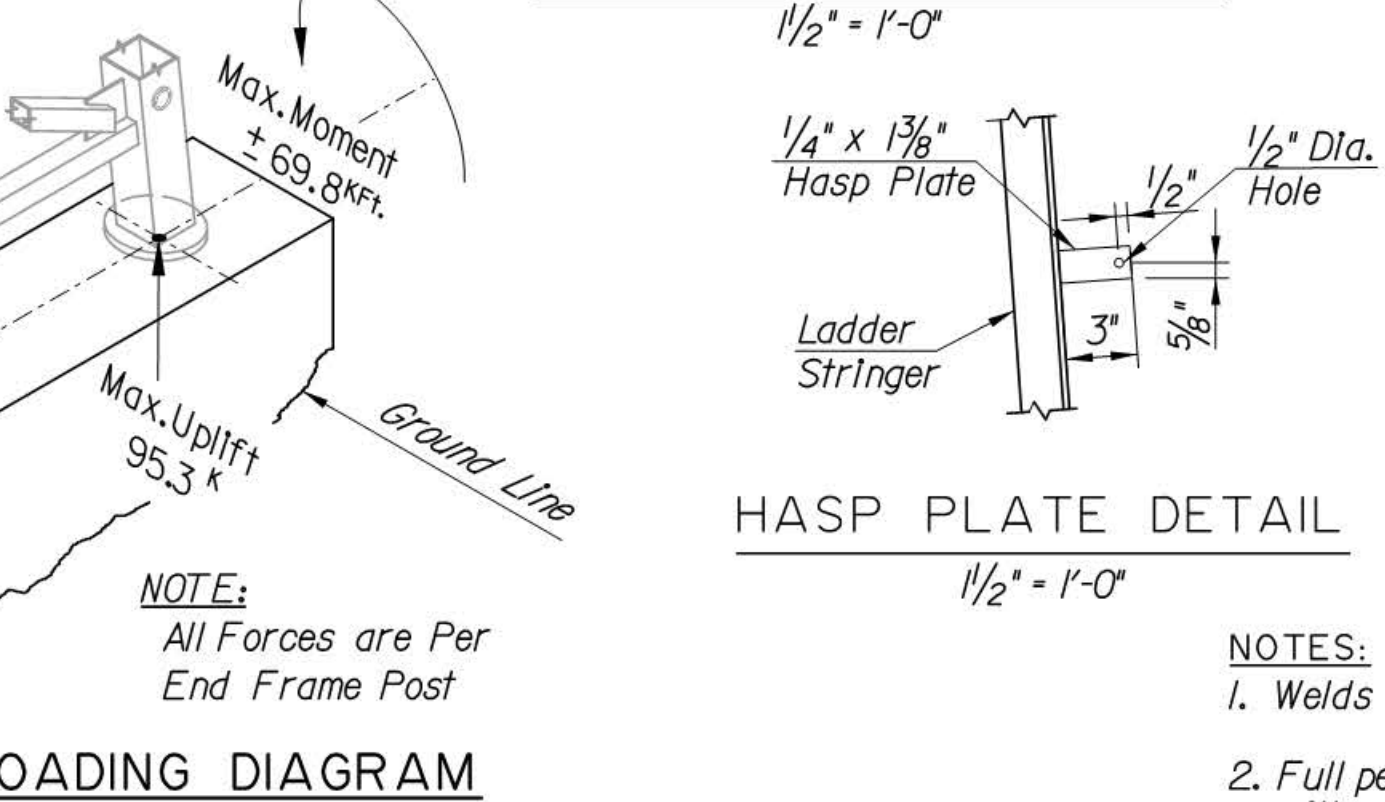
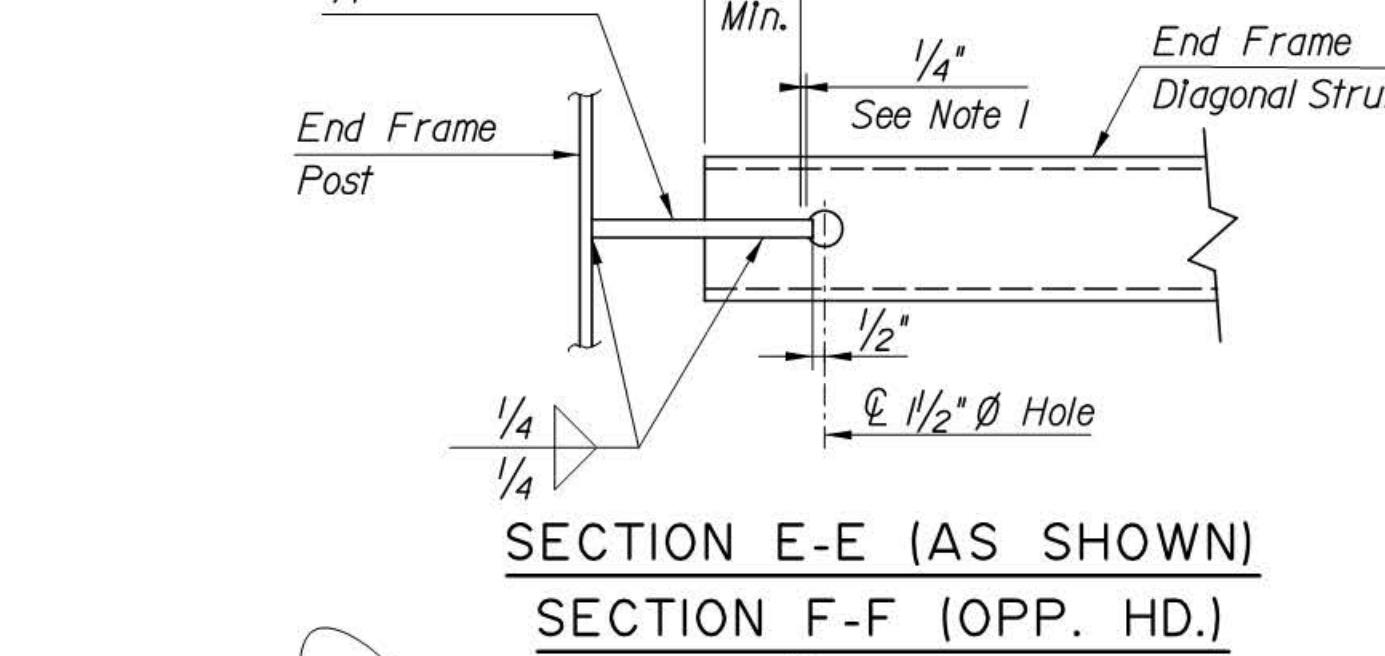
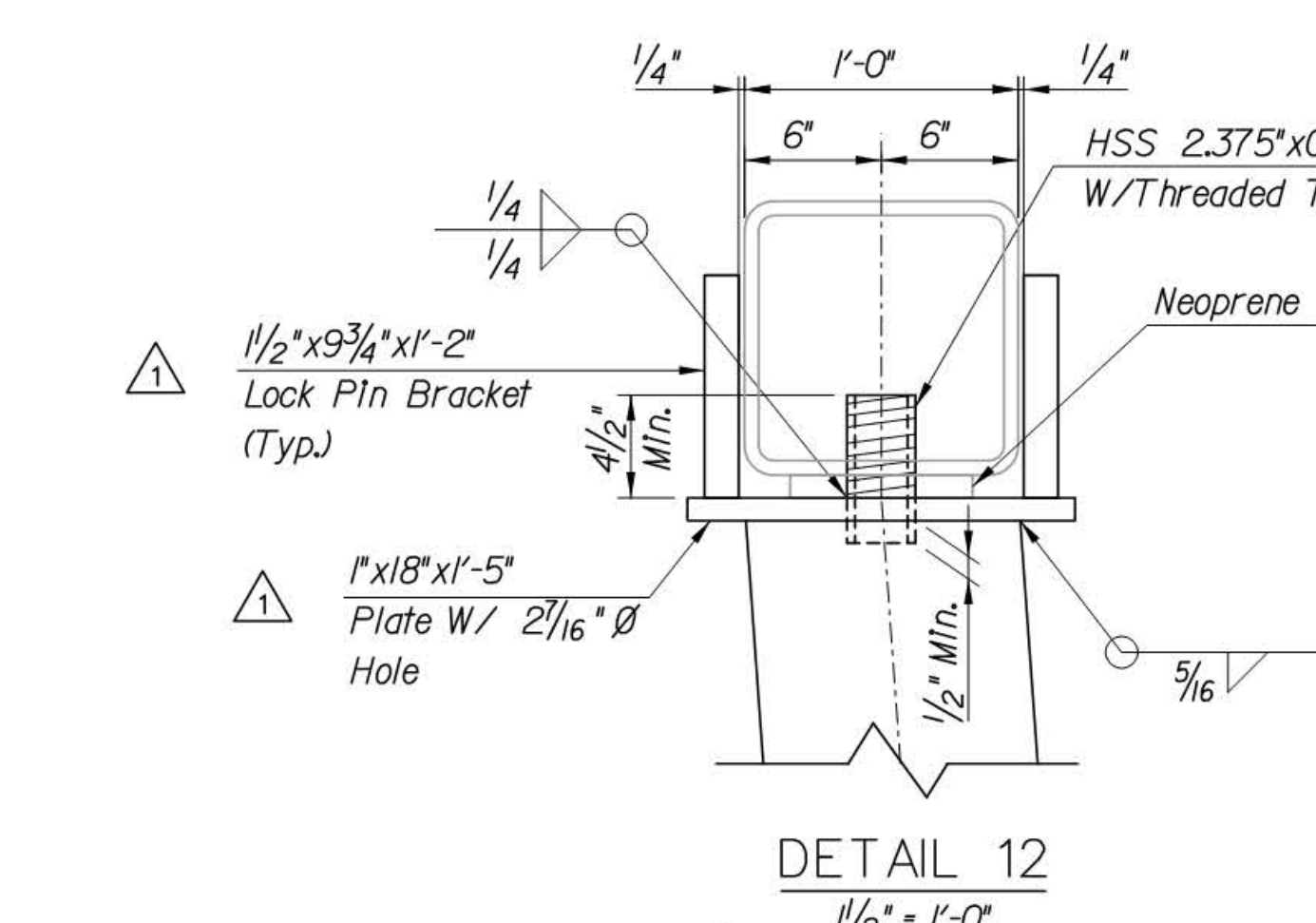
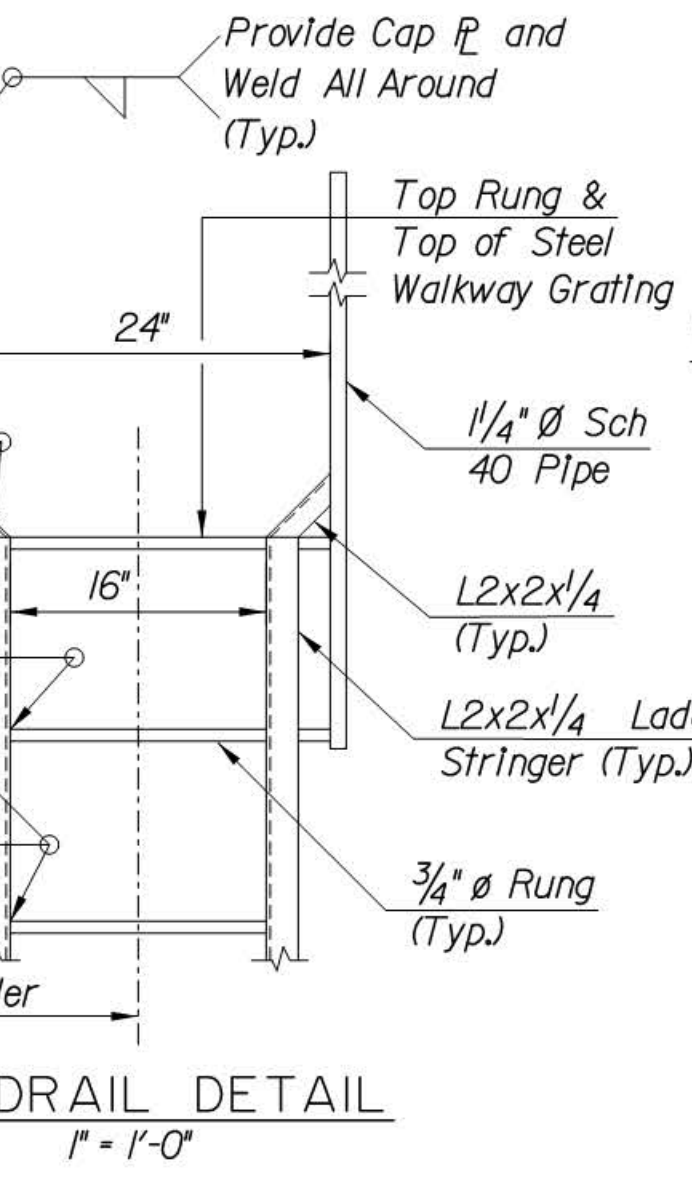
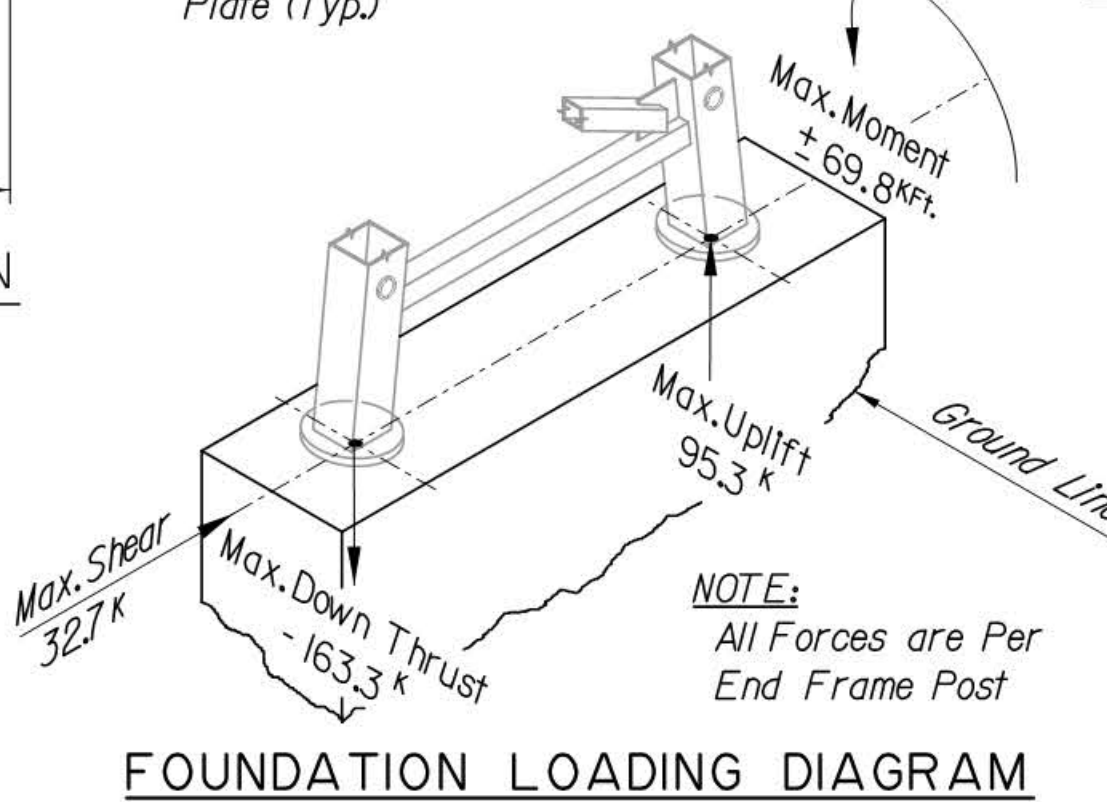
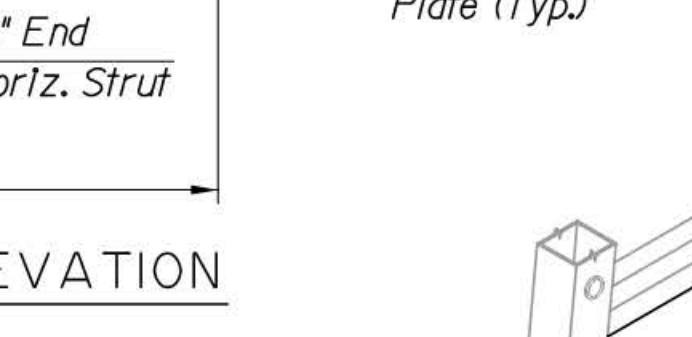
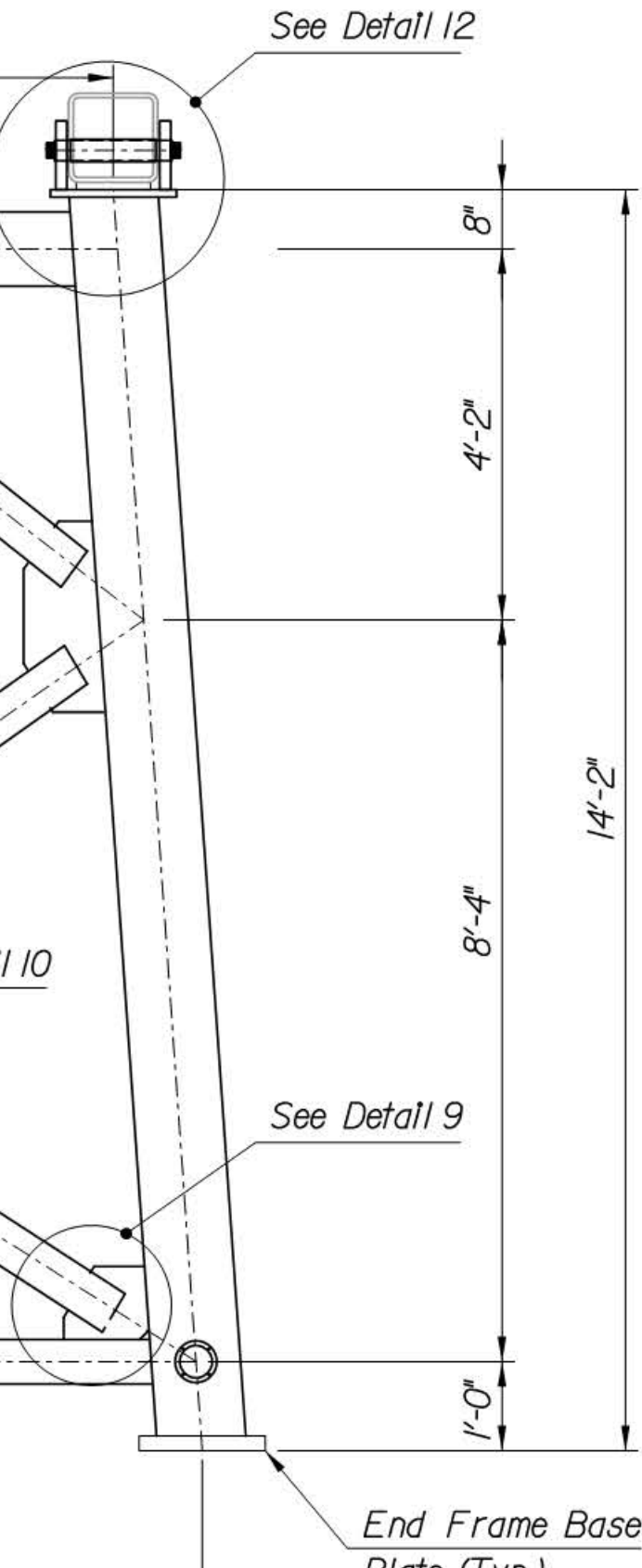
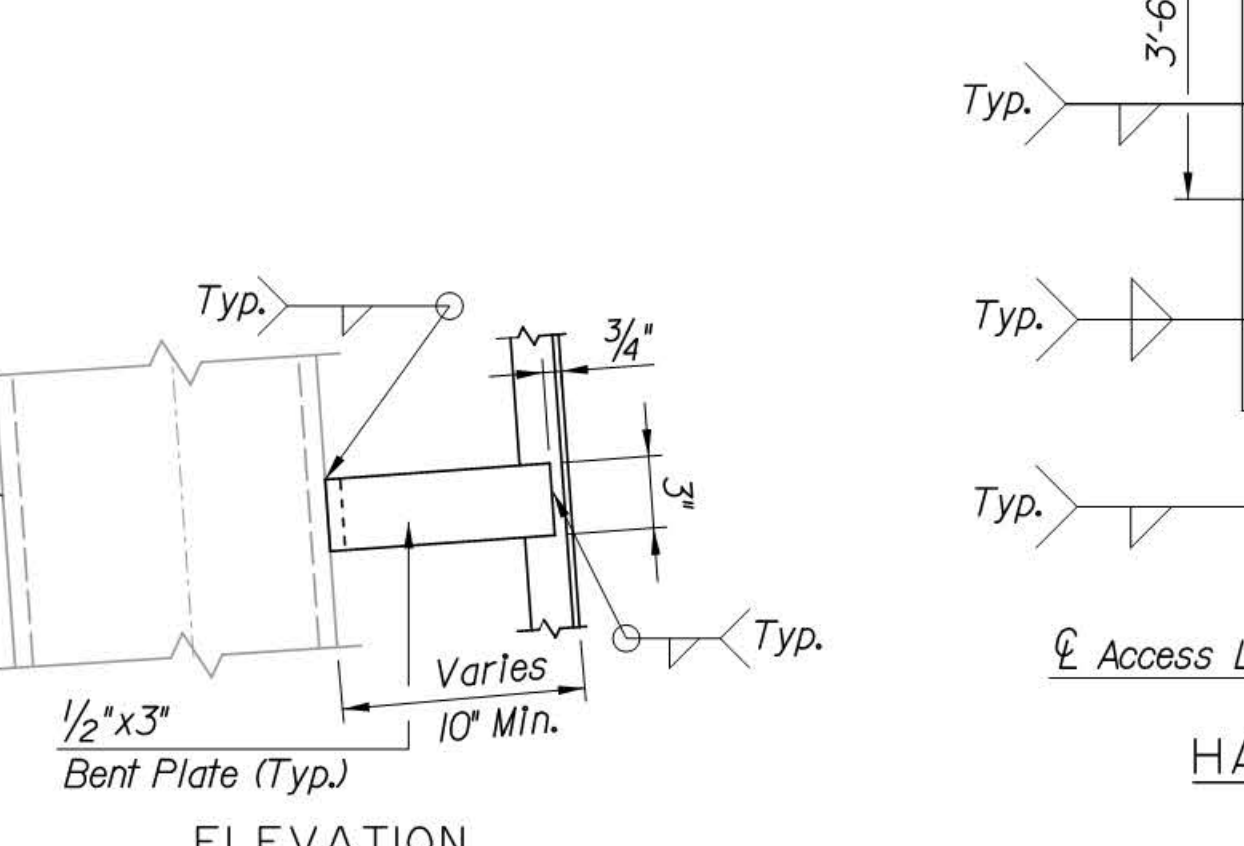
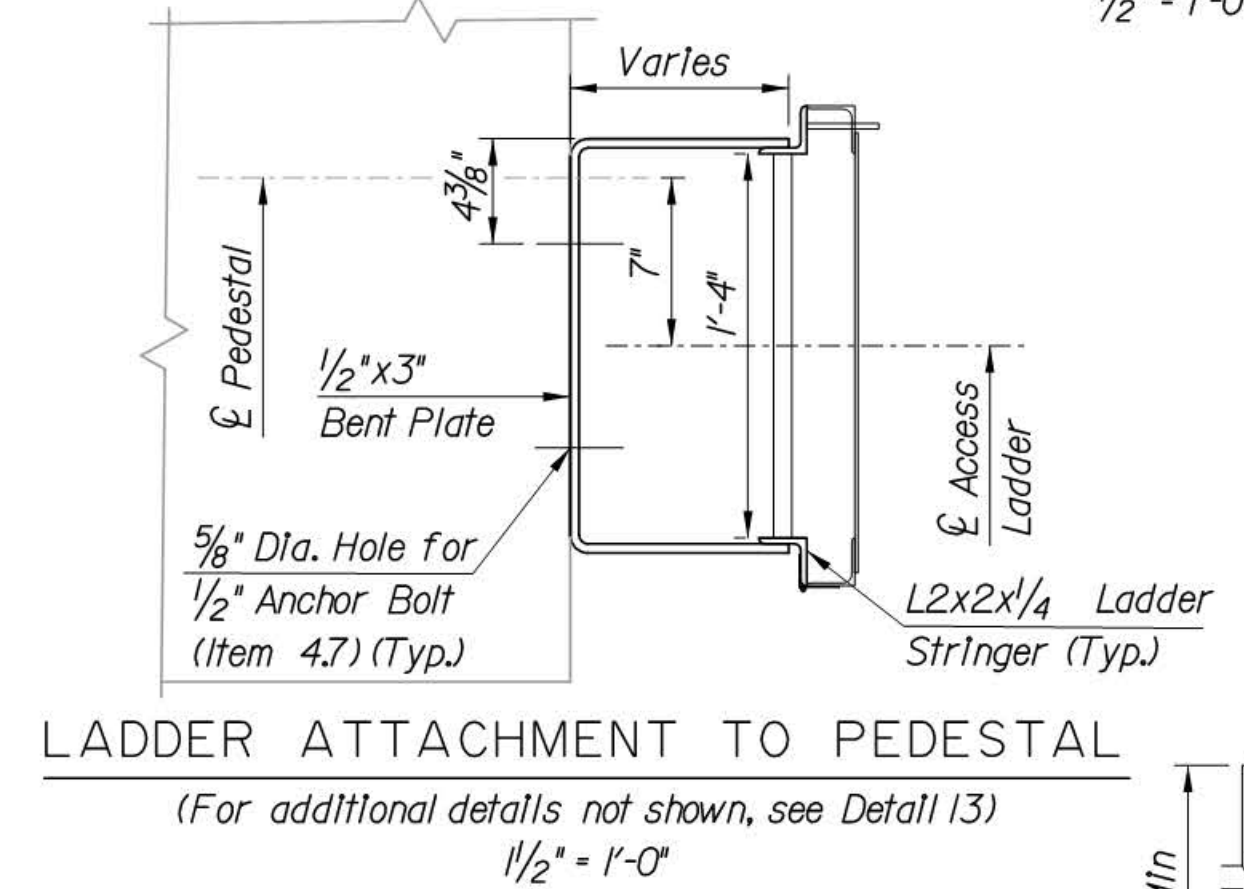
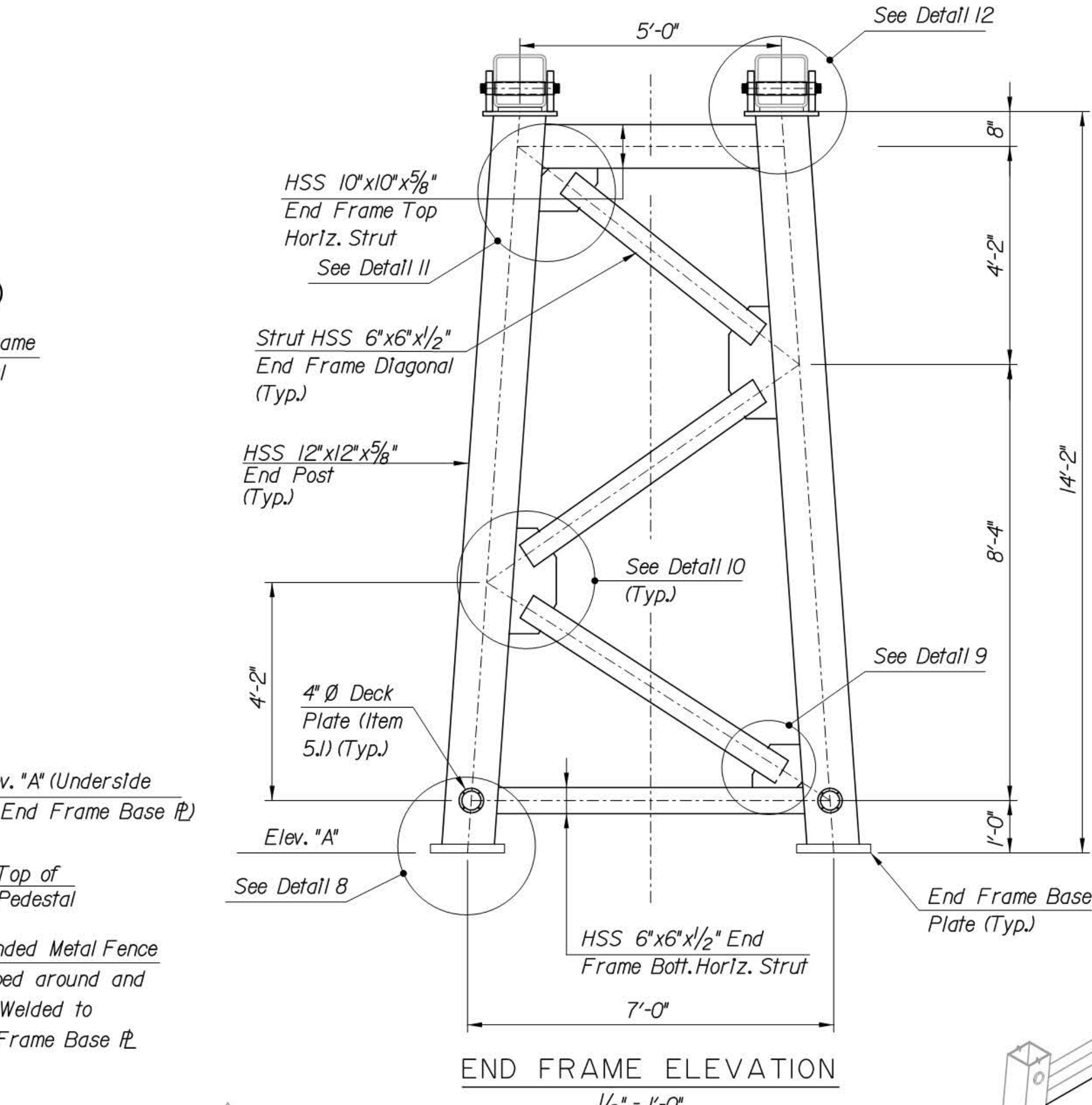
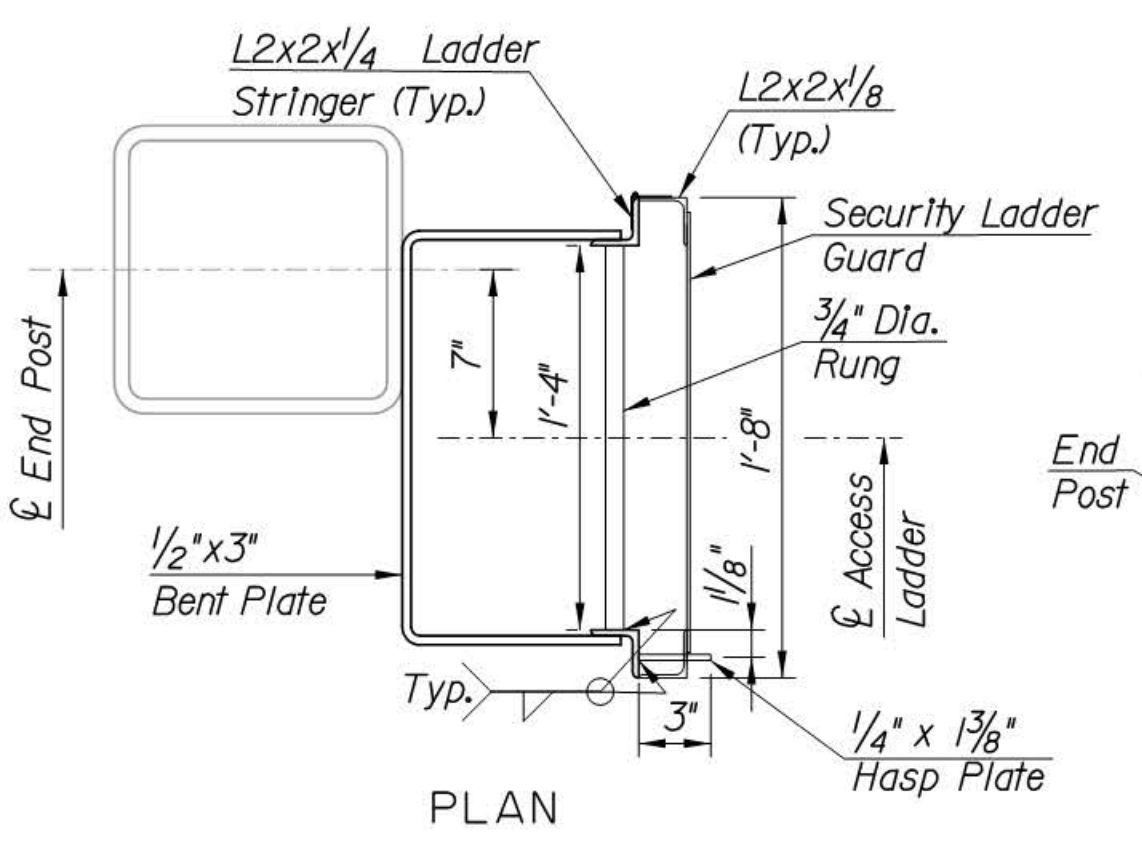
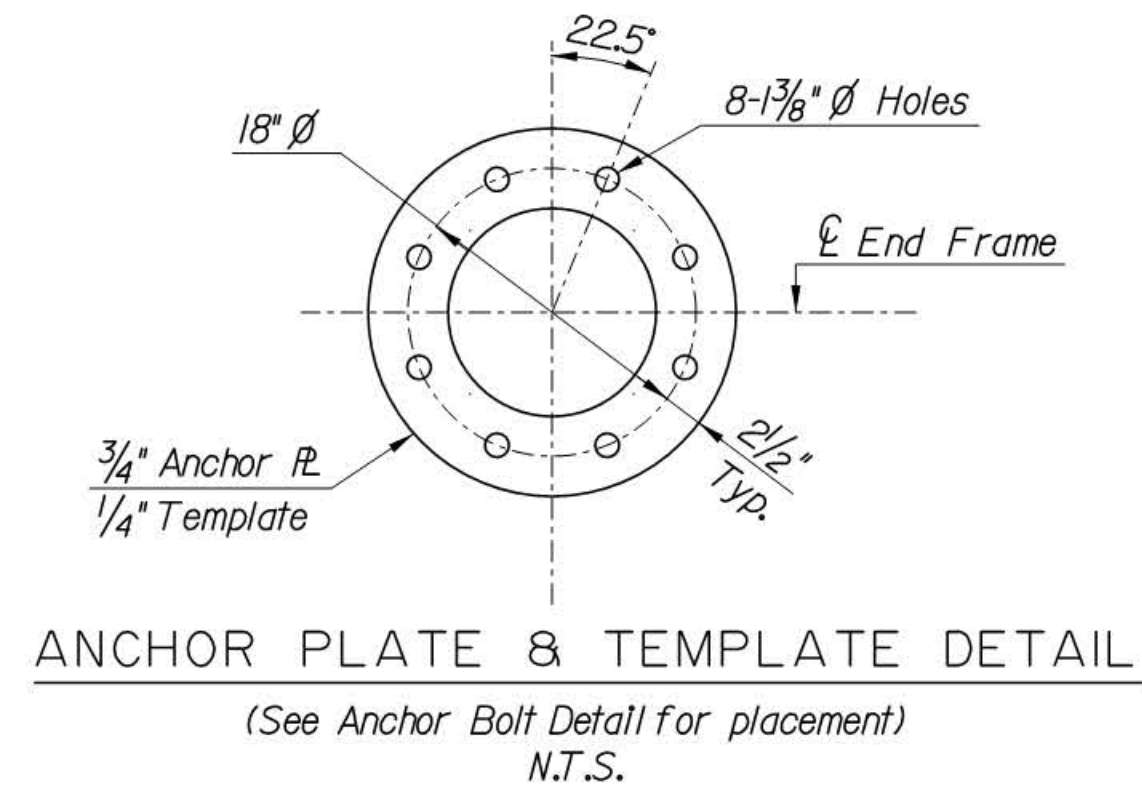
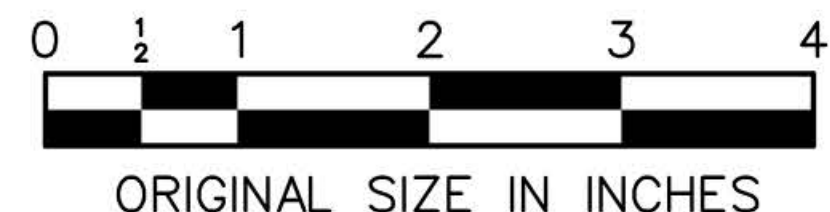


**DETAIL 8**  
N.T.S.



- NOTES:**
- Welds for HSS to Gusset Plate Connections shall be terminated 1/4" from the edge of the Gusset Plate.
  - Full penetration welded end post to base plate connection with the backing ring attached to the plate with a continuous fillet weld around the interior face of the backing ring. The thickness of the backing ring shall not exceed 3/8".
  - For Items List, see Sheet VM-10.
  - The two base plate templates for each end frame shall be permanently attached to each other while connected to the end frame to ensure proper placement of the anchor bolts during foundation construction. Each template pair shall be clearly labeled as to the correct end post of the structure and an arrow pointing upstation. All markings shall be visible upon placement.
  - For location of Detail 13, Hasp Plate, Security Ladder Guard and Handrail, see Sheet VM-21.
  - Expanded metal fencing shall be rigidly clamped to the door frame angle prior to welding the tabs to ensure a vibration free operation. Spot repair all damaged galvanizing on fencing and hinges after fabrication in accordance with ASTM A-780.
  - For Foundation and Anchor Bolt Details, see Sheet VM-8.
  - Bent Plate Supports shall be shop-welded to the end frame and welded or field-bolted with 1/2" dia. bolts to the ladder stringers.



| APP. | NO. | DATE | REVISION          |
|------|-----|------|-------------------|
|      | 1   | 4/16 | REVISED DETAIL 12 |
|      | C   | 3/14 | CONFORMED DRAWING |

CONTRACT NO.

NEW JERSEY TURNPIKE AUTHORITY  
**NEW JERSEY TURNPIKE**  
90'-150' OVERHEAD SPAN VMS/VLS SUPPORT STRUCTURE  
**END FRAME DETAILS**

|   |                                |
|---|--------------------------------|
| OFFICE OF THE CHIEF ENGINEER<br>NEW JERSEY TURNPIKE AUTHORITY | 2010 STANDARD<br>DRAWING VM-20 |
| WOODBRIDGE NEW JERSEY   | SHEET NO. OF                   |