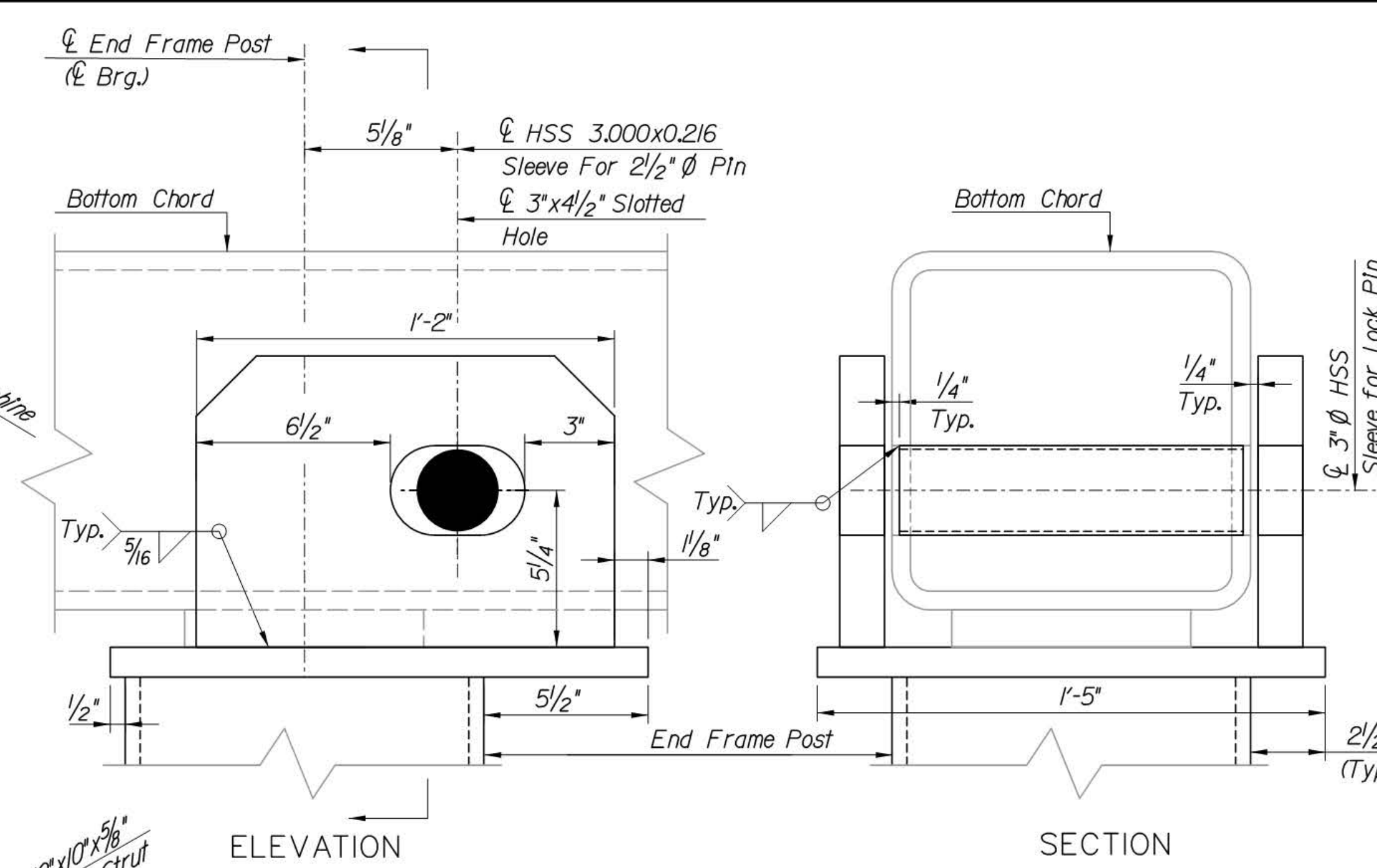
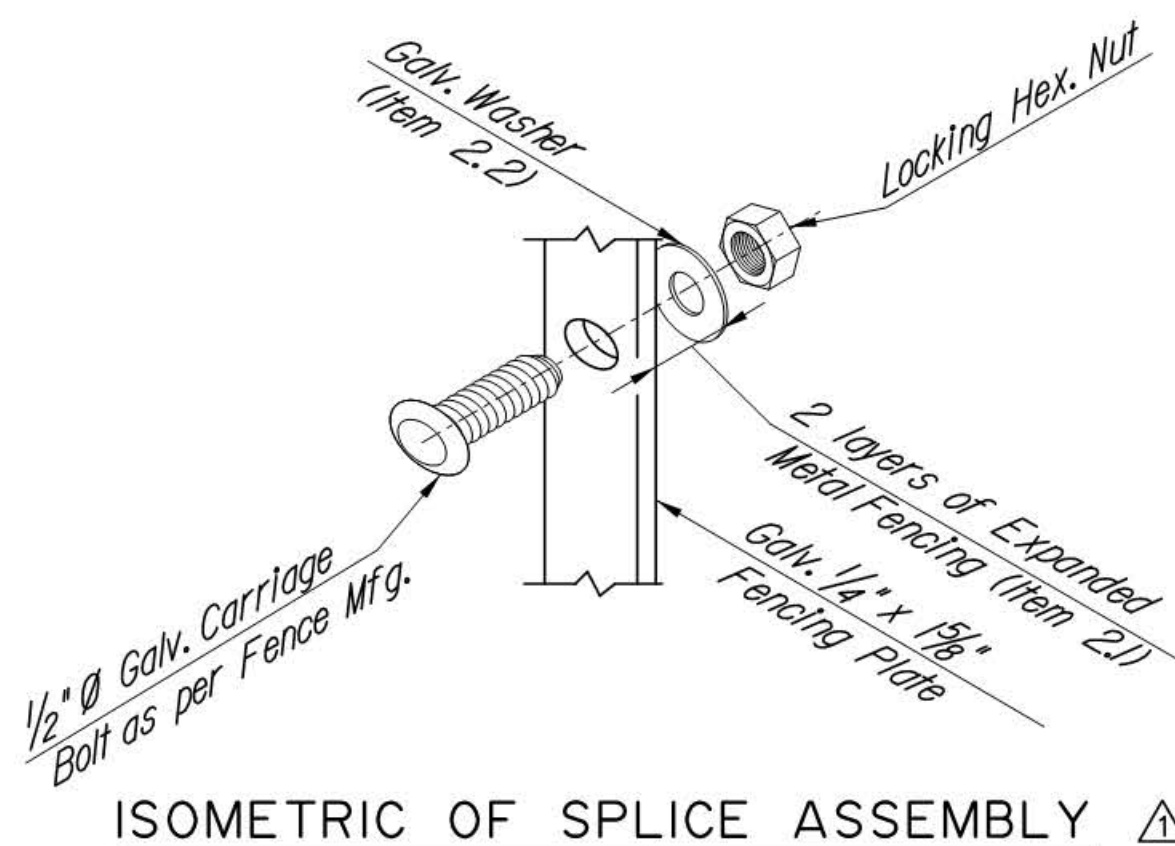


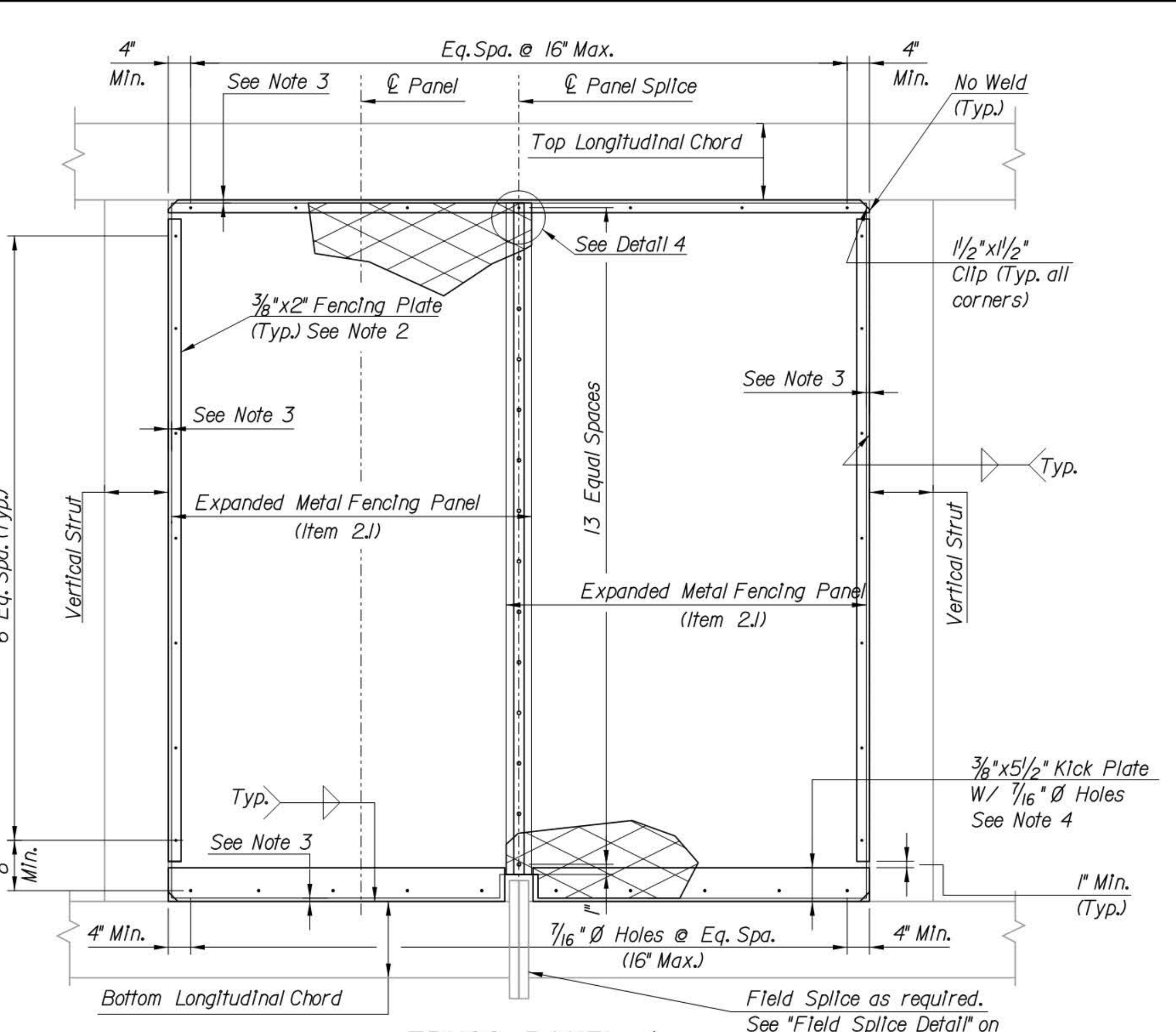
EXPLODED DETAIL OF END FRAME ASSEMBLY  
 N.T.S.



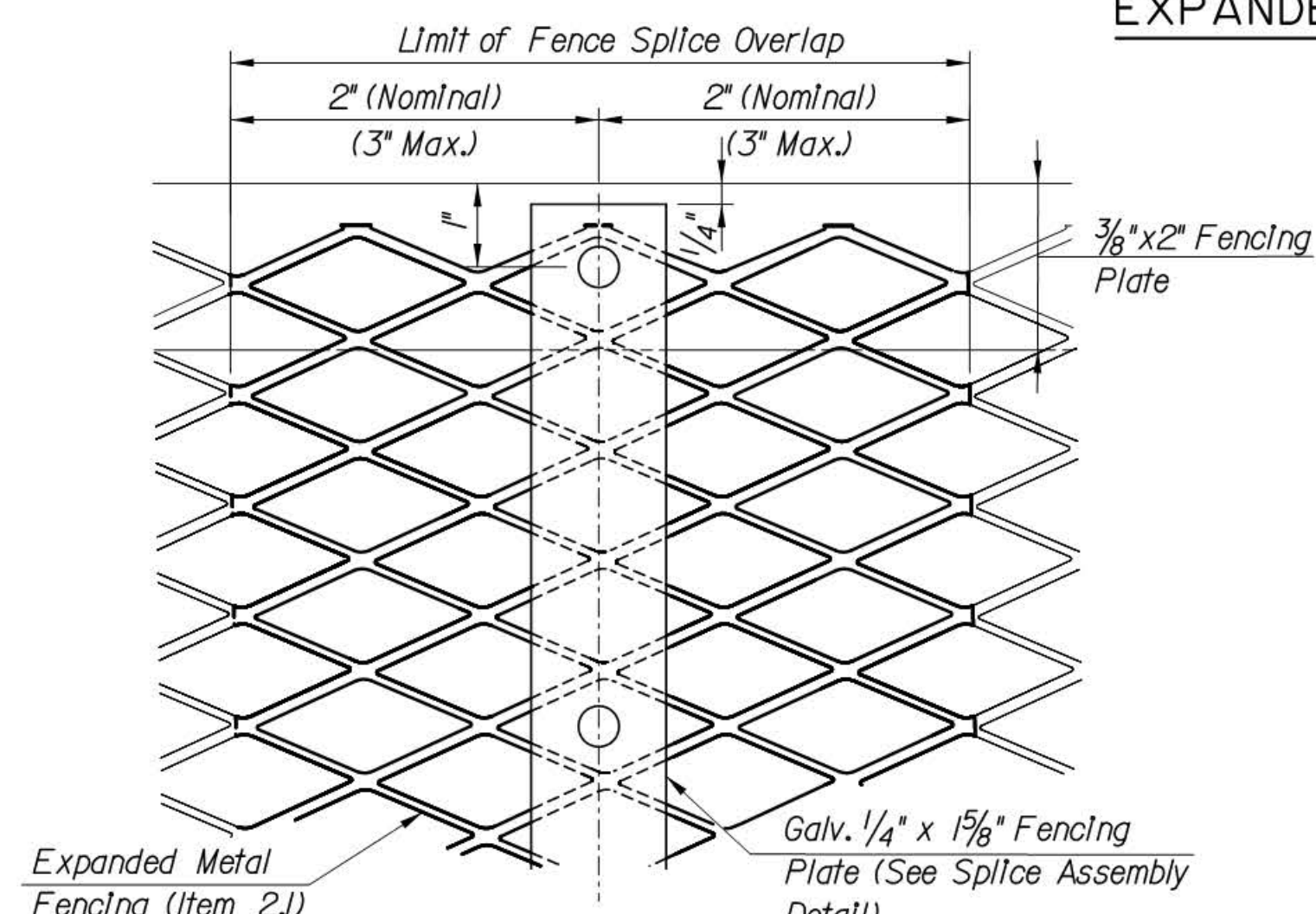
LOCK PIN BRACKET  
 DETAIL  
 3" - 1'-0"



ISOMETRIC OF SPLICE ASSEMBLY



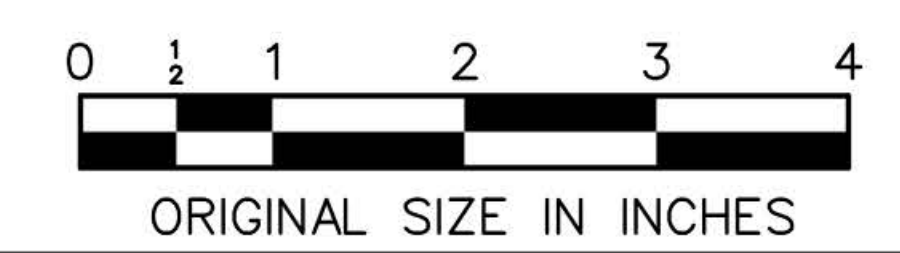
TRUSS PANEL  
 EXPANDED METAL FENCING DETAIL



DETAIL 4  
 EXPANDED METAL FENCE SPLICE DETAIL

EXPANDED METAL FENCING (Item 2.1):  
 - 1.33" x 3.00" Lg. bond to bond w/ 9 Diamonds/LF  
 - 0.142" Width  
 - 0.134" Thickness  
 - 75% Open Area

- NOTES:
1. The unthreaded grip length of the lock pin shall be 15 3/4". Place a recess nut at each end of the pin.
  2. Drill 7/16" Dia. holes for 3/8" bolts in fencing plate.
  3. Expanded metal fencing shall be a minimum of 1/2" clear to all chord and strut members.
  4. Kick plate shall only be furnished at Bottom Long. Chords.
  5. For Items List, see Sheet VM-10.  
 The following is modified from the Bill of Materials:  
 Delete Item 6J - Pipe Nipple
  6. Delete Item 6.2 and replace with Neoprene Bearing Material, McMaster-Carr - 8630K84
  7. Delete Item 6.5 and replace with Cast Stainless Steel Deck Plate, 6" Dia., Revo USA - Item 110317.
  8. Round HSS pin connections shall be threaded, 11/2 threads per inch, for a length of 1" on the top end, in accordance with ASTM A53.



APP.	NO.	DATE	REVISION
	2	4/16	REVISED LOCK PIN BRACKET DETAIL
	1	3/11	REVISED DETAILS AND NOTES
	0	8/10	REISSUED DRAWING

NEW JERSEY TURNPIKE AUTHORITY  
**NEW JERSEY TURNPIKE**  
 90'-150' OVERHEAD SPAN VMS/VSLs SUPPORT STRUCTURE  
**TRUSS AND FENCE DETAILS**  
 OFFICE OF THE CHIEF ENGINEER  
 NEW JERSEY TURNPIKE AUTHORITY  
 WOODBRIDGE NEW JERSEY  
 2010 STANDARD DRAWING  
**VM-19**  
 CONTRACT NO. SHEET NO. OF