

**NOTES:**

1. THIS DETAIL TO BE USED WHEN ACCESS FROM OFF-SITE CAN NOT BE ACCOMMODATED. DRAWING NOT APPLICABLE WHEN IN THE VICINITY OF A MAINTENANCE U TURN OR MEDIAN CROSSOVER.
2. A CONCURRENT LANE CLOSING, IF USED, SHALL BE APPROVED BY THE OPERATIONS DEPARTMENT.
3. ACCESS TO THE MEDIAN OR USING THE LEFT SHOULDER SIMILAR.
4. APPROPRIATE GUIDE RAIL TRANSITIONS SHALL BE PROVIDED WHERE REQUIRED WHEN THE EXISTING SHOULDER IS WIDENED.
5. SAND BARREL ARRAY ILLUSTRATED. TEMPORARY IMPACT ATTENUATOR IS AS PROVIDED IN THE PROJECT SPECIFICATIONS.
6. A TRUCK WITH MOUNTED ATTENUATOR (TMA) WITH ARROW BOARD IN CAUTION MODE SHALL BE PLACED WHERE SHOWN TO CLOSE OFF THE WORK AREA DURING NON WORKING HOURS.
7. A PORTABLE VARIABLE MESSAGE SIGN MAY BE INSTALLED IN THE ADVANCE SIGN SEQUENCE WITH LOCATION AND LEGEND TO BE DETERMINED BY THE OPERATIONS DEPARTMENT. A PORTABLE VARIABLE MESSAGE SIGN IS NOT NECESSARY FOR SHOULDER CLOSINGS.
8. SIGNS MAY BE INSTALLED ON A PORTABLE SIGN STAND TO THE TOP OF THE PRECAST CONCRETE CONSTRUCTION BARRIER.

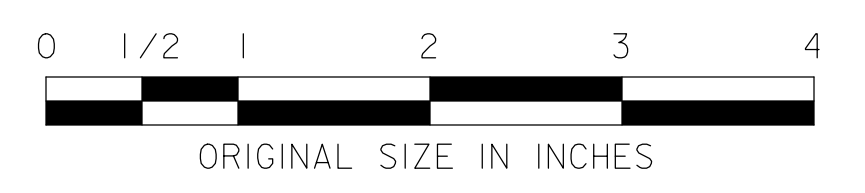
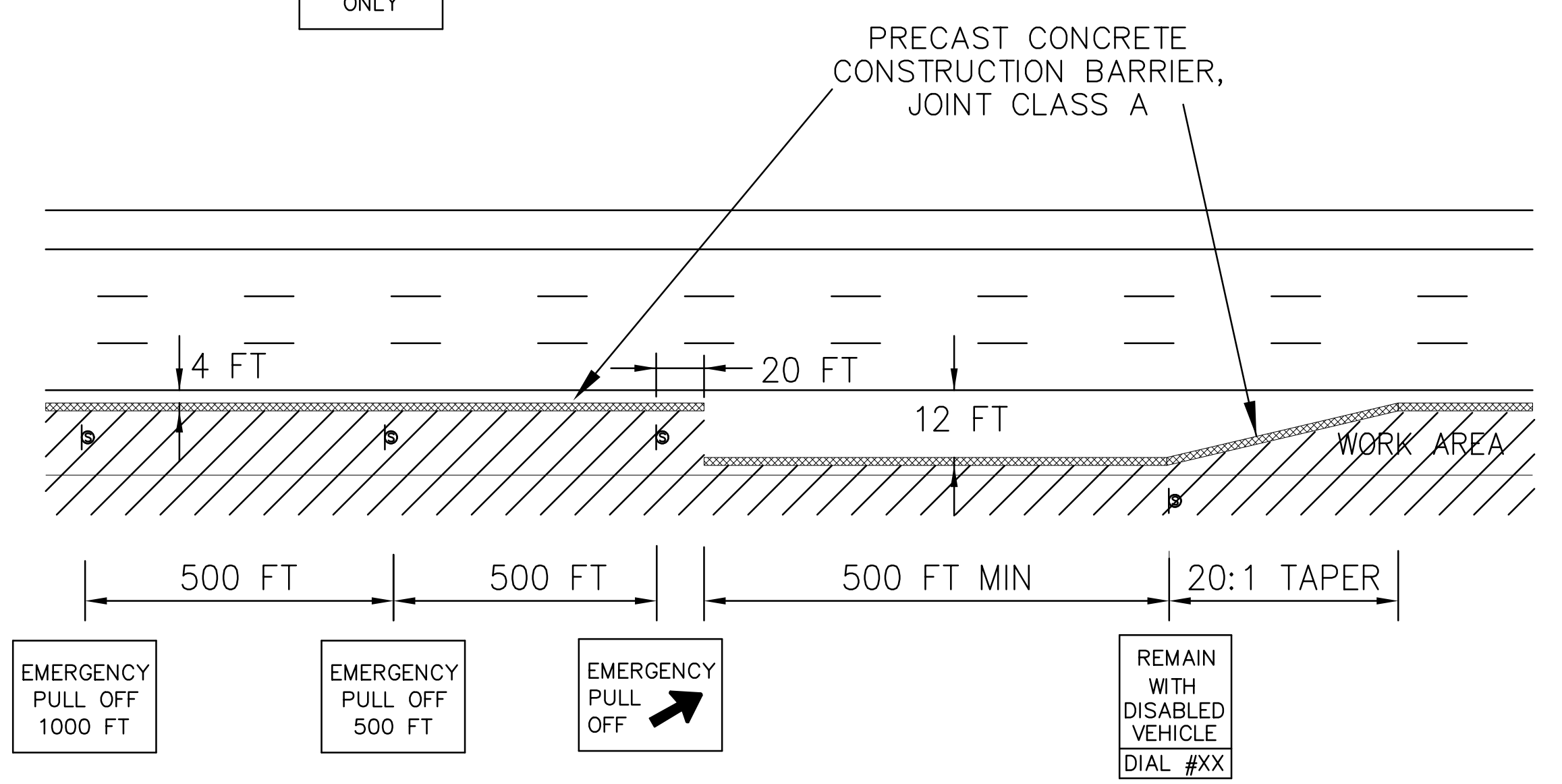
CONE SPACING, S (FT)

ROADWAY	S
PARKWAY	80
TURNPIKE	75

- LEGEND:**
- ⊙ TEMPORARY TRAFFIC CONTROL SIGN
  - ◇ CONE
  - ➔ DIRECTION OF TRAVEL
  - ▬ TEMPORARY IMPACT ATTENUATOR
  - 🚚 TRUCK WITH MOUNTED ATTENUATOR
  - ⋯ ARROW BOARD

**NOTE:** AN EMERGENCY PULL OFF SHALL BE PROVIDED EVERY 1/2 MILE FOR SHOULDER CLOSINGS THAT ARE 1 MILE IN LENGTH OR LONGER MEASURED FROM THE START OF THE PRECAST CONCRETE CONSTRUCTION BARRIER TO THE END OF THE BARRIER. EACH PULL OFF AREA SHALL NOT BE USED BY THE CONTRACTOR FOR WORK AREA ACCESS/EGRESS.

**EMERGENCY PULL OFF DETAIL**



NEW JERSEY TURNPIKE AUTHORITY  
**NEW JERSEY TURNPIKE  
 GARDEN STATE PARKWAY**  
 STANDARD DRAWINGS

---

CONSTRUCTION ACCESS

---

OFFICE OF THE CHIEF ENGINEER  
 NEW JERSEY TURNPIKE AUTHORITY  
 WOODBRIDGE, NEW JERSEY

STANDARD DRAWING  
**TP-25**

0	REISSUED DRAWING	12/16
REV.	DESCRIPTION	DATE