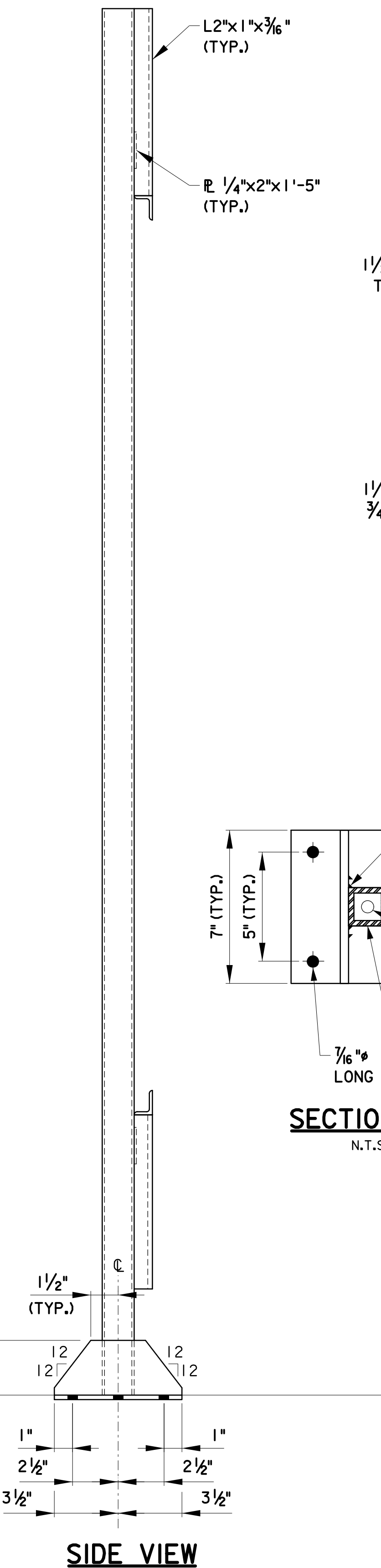
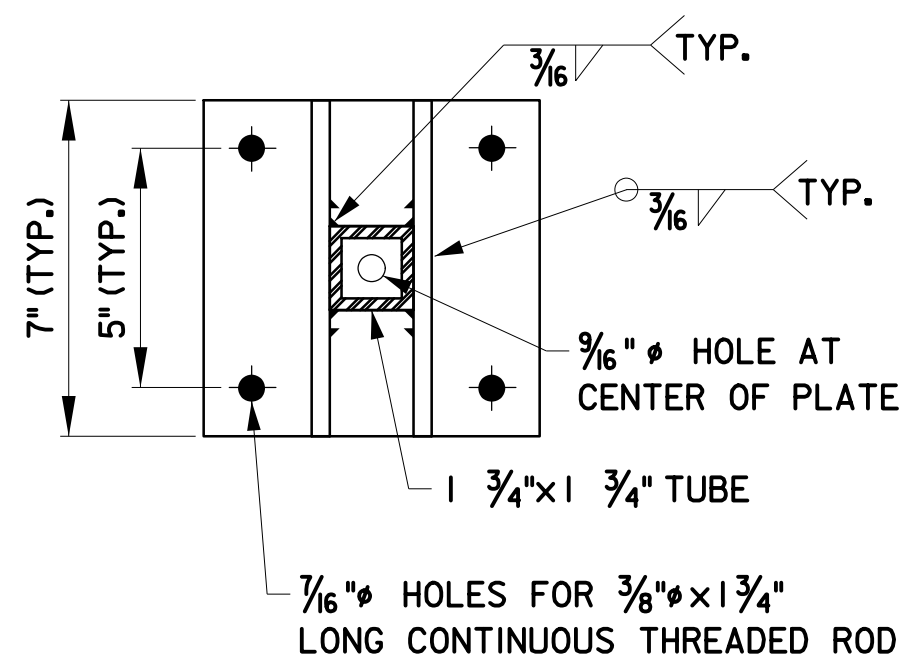


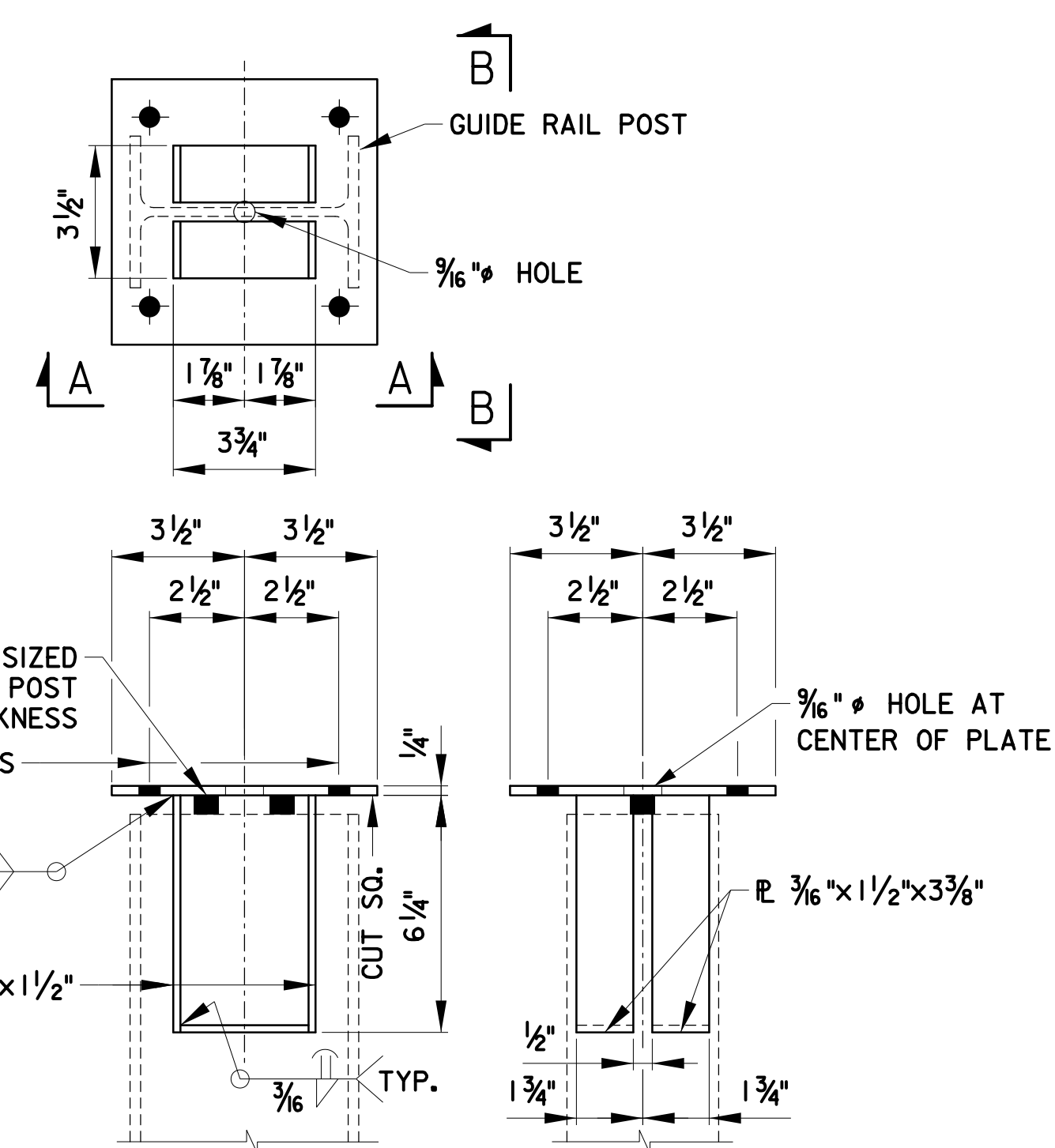
ALUMINUM SIGN STAND DETAIL
N.T.S.



SIDE VIEW

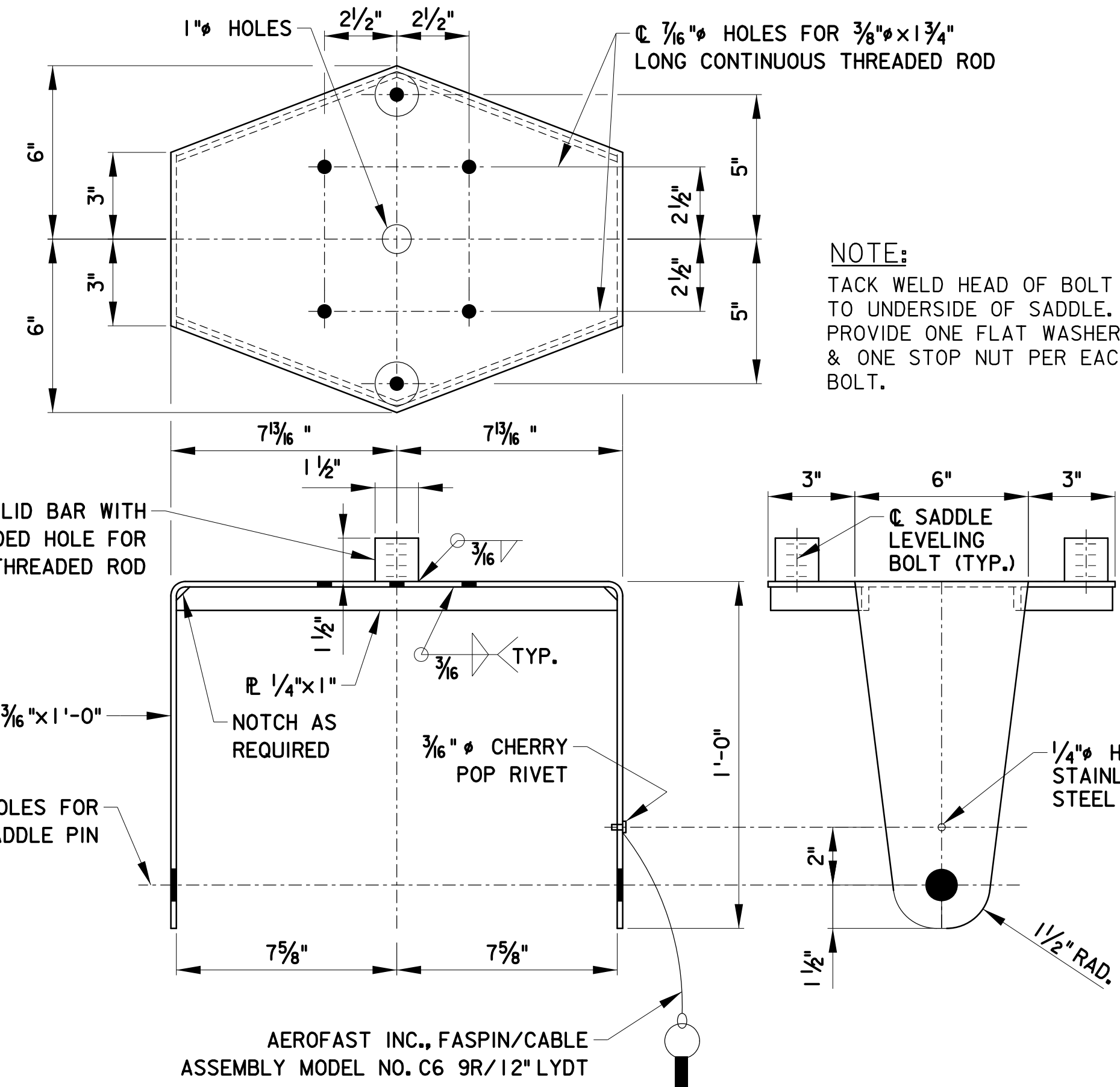


SECTION C-C
N.T.S.

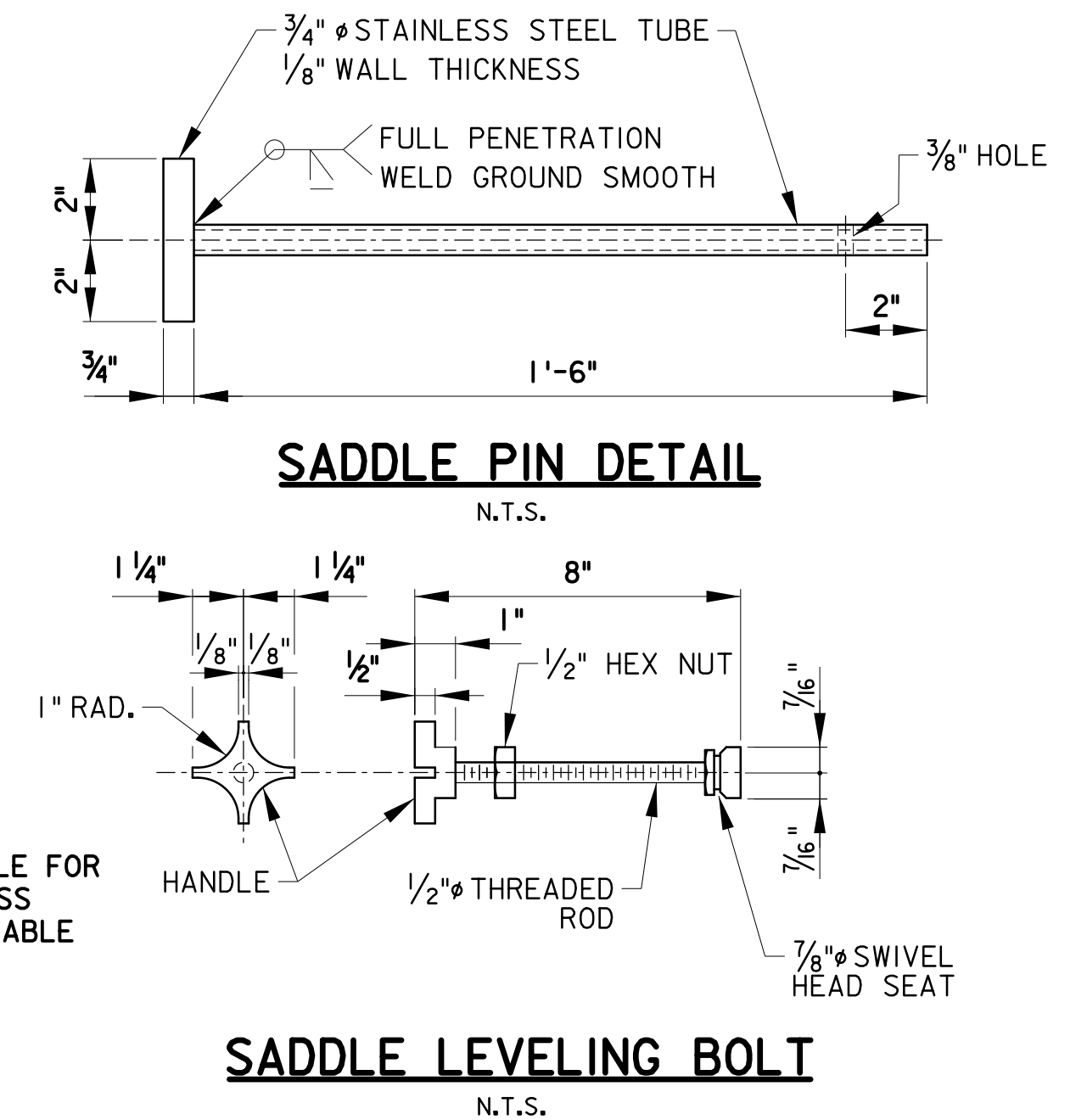


SECTION A-A SECTION B-B

GUIDE RAIL SUPPORT (SYNTHETIC BLOCKOUT)
SCALE: 3"=1'-0"



CONCRETE MEDIAN BARRIER SADDLE
SCALE: 3"=1'-0"

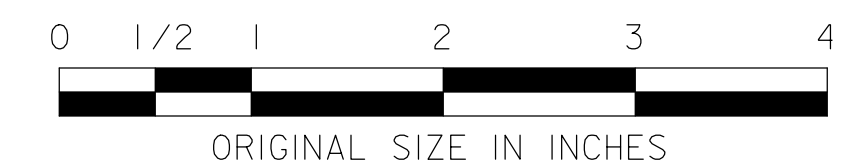


SADDLE PIN DETAIL
N.T.S.

SADDLE LEVELING BOLT
N.T.S.

GENERAL NOTES:

1. THE SIGN STAND AND CONCRETE MEDIAN BARRIER SADDLE SHALL BE ASTM ALUMINUM ALLOY 6061-T6 UNPAINTED.
2. GUIDE RAIL SUPPORT SHALL BE ASTM A709 GRADE 36 STEEL, HOT DIPPED GALVANIZED ASTM A123 AFTER FABRICATION.
3. SADDLE PIN SHALL BE STAINLESS STEEL.
4. THE SADDLE LEVELING BOLT SHALL BE FABRICATED FROM THE FOLLOWING MATERIALS:
HANDLE-CAST ALUMINUM
SWIVEL HEAD SEAT-STAINLESS STEEL
THREADED ROD AND HEX NUT-STAINLESS STEEL
5. ALL OTHER MATERIALS-BOLTS, NUTS, WASHERS SHALL BE FABRICATED FROM STAINLESS STEEL.
6. FASPIN/CABLE ASSY. SHALL BE MANUFACTURED BY THE AEROFAST, INC. 360 GUNDERSEN DRIVE, CAROL STREAM, IL 60188.
7. MINOR DEVIATIONS IN THE SHAPE AND/OR DIMENSIONS OF THE LEVELING BOLT HANDLE MAY BE ALLOWED UPON PRIOR APPROVAL BY THE AUTHORITY.
8. MEDIAN SIGNING MAY BE OMITTED WHERE MEDIAN SADDLE MOUNTS DO NOT FIT THE CONCRETE MEDIAN AND NO LEFT SHOULDER EXISTS.



NEW JERSEY TURNPIKE AUTHORITY
**NEW JERSEY TURNPIKE
GARDEN STATE PARKWAY**

STANDARD DRAWINGS

SIGN STAND TYPE III
FOR MOUNTING ON GUIDE RAIL
OR CONCRETE MEDIAN BARRIER

OFFICE OF THE CHIEF ENGINEER
NEW JERSEY TURNPIKE AUTHORITY
WOODBIDGE, NEW JERSEY

STANDARD DRAWING

TP-21

REV.	DESCRIPTION	DATE
0	REISSUED DRAWING	12/16