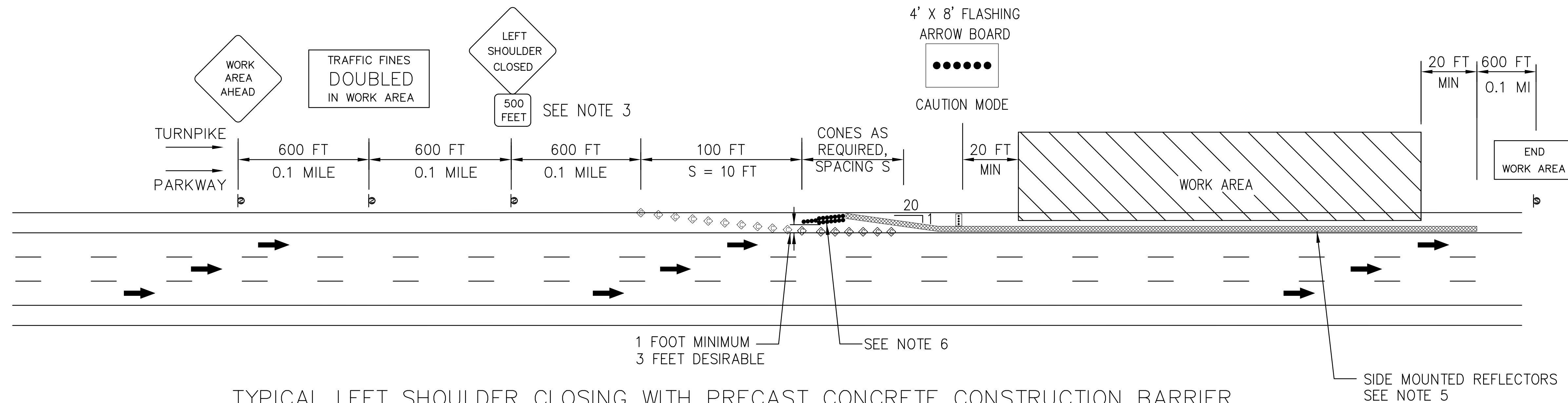


TYPICAL LEFT SHOULDER CLOSING



TYPICAL LEFT SHOULDER CLOSING WITH PRECAST CONCRETE CONSTRUCTION BARRIER

NOTES:

1. A LANE CLOSING WILL BE REQUIRED WHEN THE SHOULDER IS LESS THAN 10 FEET WIDE OR WHEN EQUIPMENT IS OPERATED LESS THAN 3 FEET FROM THE TRAVELED LANE. HOWEVER, STABILIZING ATTACHMENTS SUCH AS OUTRIGGERS MAY EXTEND TO THE SHOULDER LINE WITHOUT NECESSITATING THE CLOSING OF THE ADJACENT LANE.
2. SHOULDER CLOSINGS LESS THAN ONE-HALF MILE IN LENGTH MAY OMIT THE "PARK DISABLED VEHICLES BEHIND CONES" SIGN.
3. ONLY INSTALLATIONS ON PORTABLE SIGN STANDS MAY OMIT THE SUPPLEMENTAL SIGN "500 FEET".
4. MODULAR GLARE SCREEN LIMITS ON PRECAST CONCRETE CONSTRUCTION BARRIER ARE AS PROVIDED IN THE PROJECT SPECIFICATIONS.
5. HIGH INTENSITY FLASHING WARNING LIGHTS, SIDE MOUNTED REFLECTORS AND/OR DELINEATION FOR THE PRECAST CONCRETE CONSTRUCTION BARRIER SHALL BE PER THE PROJECT SPECIFICATIONS.
6. SAND BARREL ARRAY ILLUSTRATED. TEMPORARY IMPACT ATTENUATOR IS AS PROVIDED IN THE PROJECT SPECIFICATIONS.
7. SEE STANDARD DRAWING TP-25 FOR SHOULDER CLOSINGS WITH BARRIER GREATER THAN 1 MILE IN LENGTH.

CONE SPACING, S (FT)

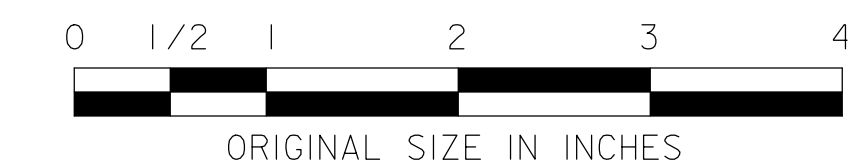
ROADWAY	S
PARKWAY	80
TURNPIKE	50

TMA SPACING, W (FT)

SPEED LIMIT	W
55+	150
45	100

LEGEND:

- TEMPORARY TRAFFIC CONTROL SIGN
- CONE
- DIRECTION OF TRAVEL
- ARROW BOARD
- TRUCK WITH MOUNTED ATTENUATOR
- TEMPORARY IMPACT ATTENUATOR



NEW JERSEY TURNPIKE AUTHORITY  
**NEW JERSEY TURNPIKE  
 GARDEN STATE PARKWAY**

STANDARD DRAWINGS

LEFT SHOULDER CLOSING

OFFICE OF THE CHIEF ENGINEER  
 NEW JERSEY TURNPIKE AUTHORITY  
 WOODBRIDGE, NEW JERSEY

STANDARD DRAWING

**TP-6**

REV.	DESCRIPTION	DATE
0	REISSUED DRAWING	12/16