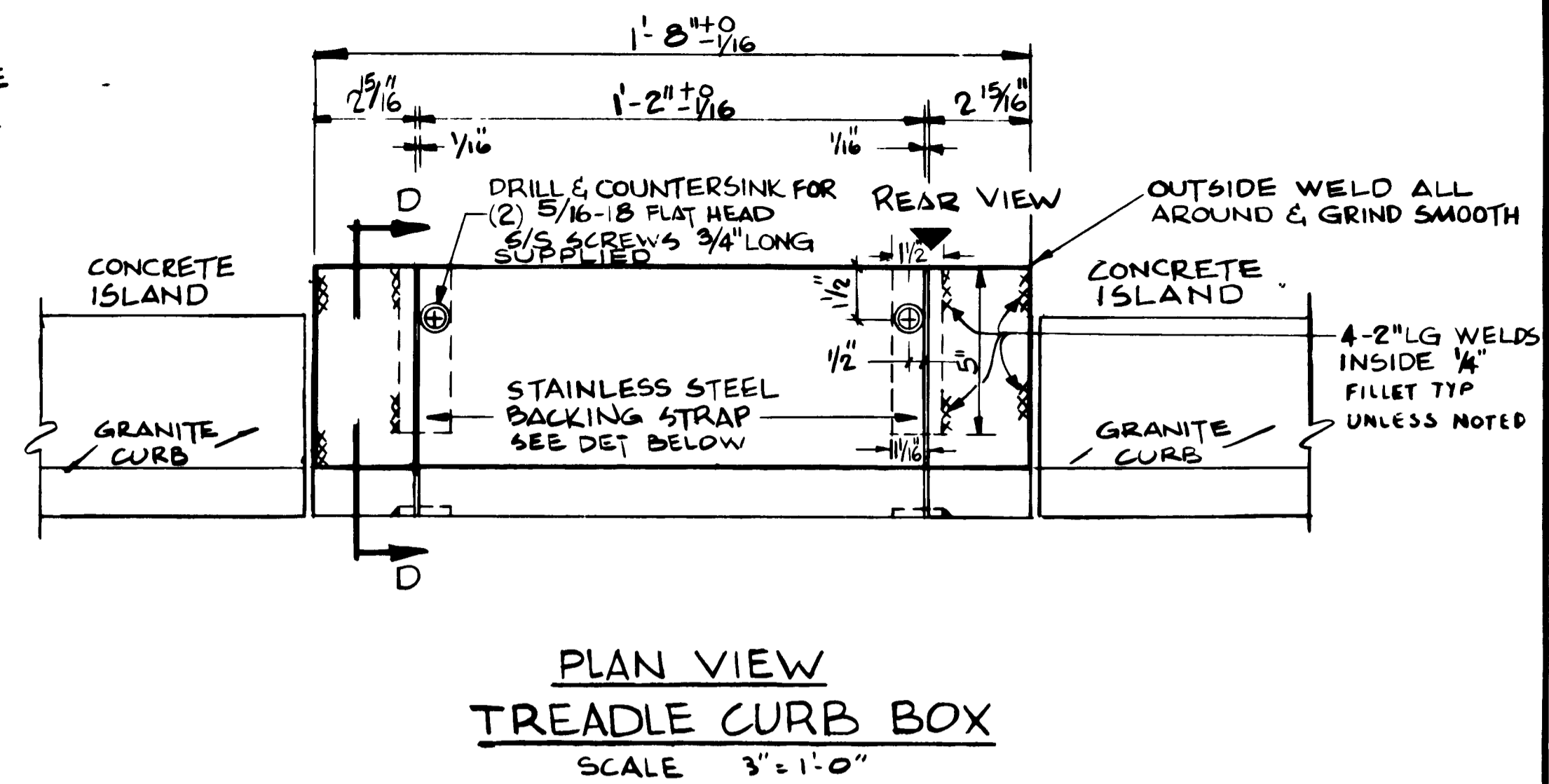
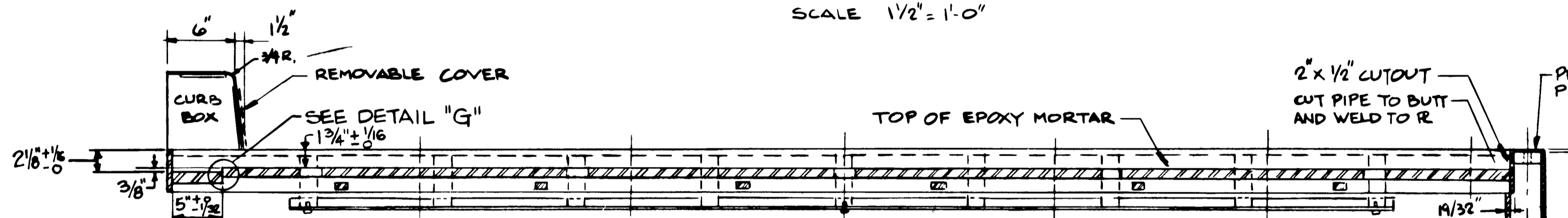


**NOTE**  
 \* 1/64" MAX. TOLERANCE  
 NON-ACCUMULATIVE FOR  
 HOLE LOCATIONS FROM THE  
 REFERENCE LINE

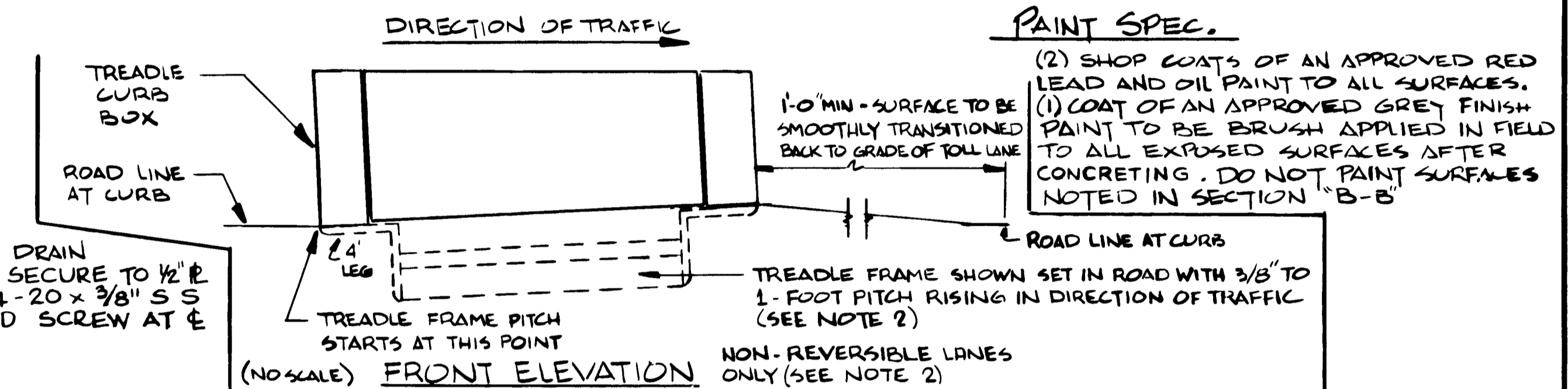


**PLAN VIEW**  
 SCALE 1/2" = 1'-0"

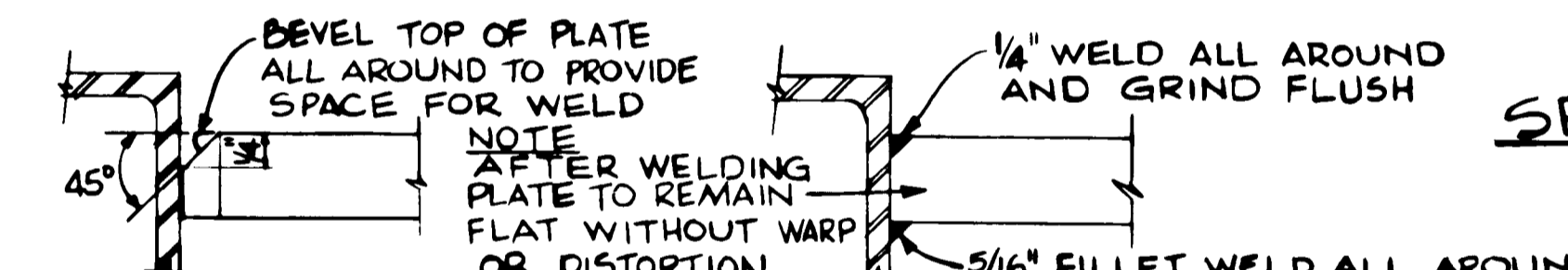
**PLAN VIEW**  
**TREADLE CURB BOX**  
 SCALE 3" = 1'-0"



**SECTION "A-A"**

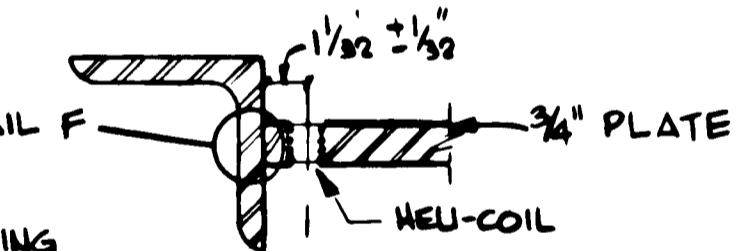


**FRONT ELEVATION**



**DETAIL OF 3/4" PLATE BEFORE WELDING**

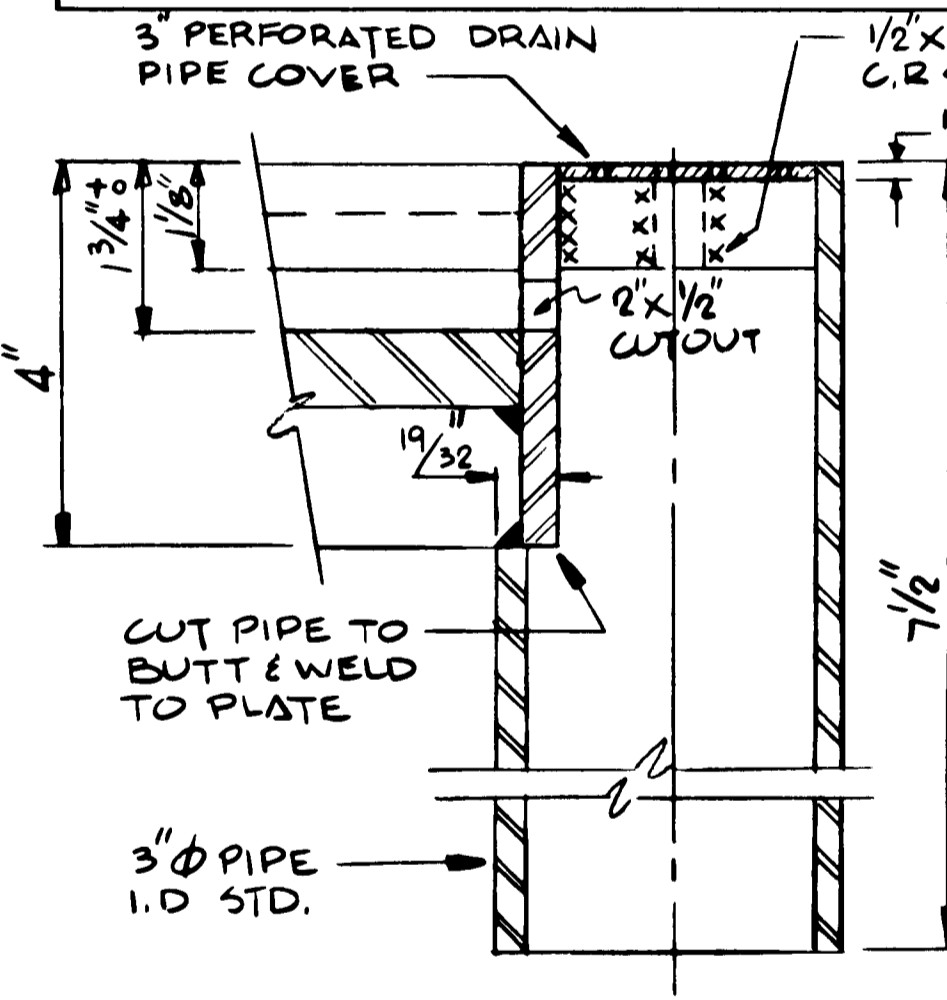
**DETAIL OF 3/4" PLATE AFTER WELDING**



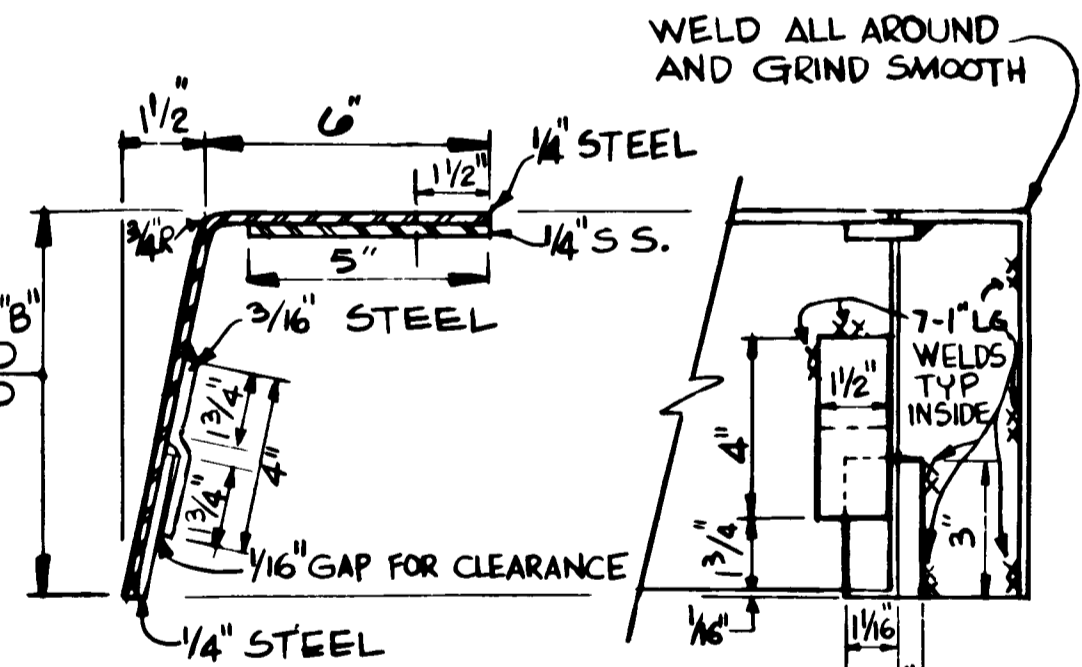
**DETAIL "E"**  
 (NON-CORROSIVE HELI-COIL)  
 SCALE 1/2" = 1'-0"

**INSTRUCTIONS FOR HELI-COIL INSTALLATION FOR 5/16" X 18 BOLT AFTER GALVANIZING**

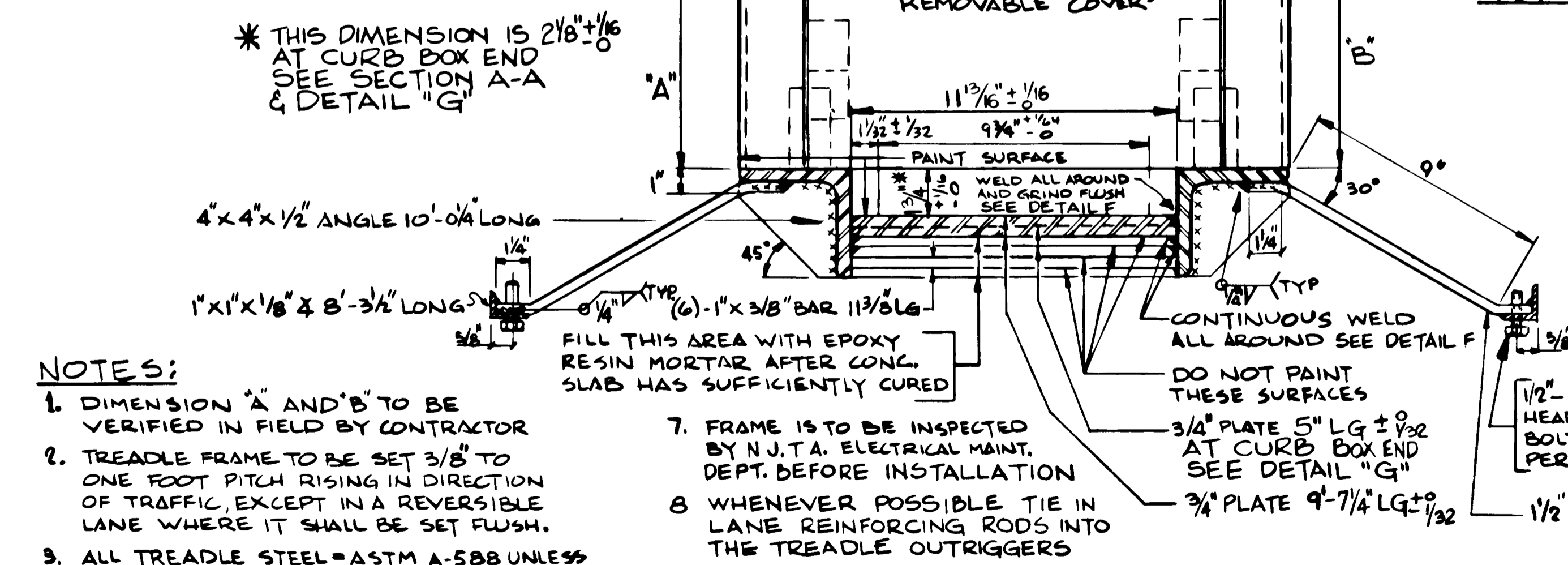
1. DRILL (A (.3320) THRU HOLE
2. COUNTER SINK 120° ± 5° TO .371/40 DIAMETER
3. TAP THRU WITH HELI-COIL STI TAP # 42187-5-H3 (CLASS 3B)
4. GAGE WITH HELI-COIL GAGE # 3688-5 P.D. 3486-.3515
5. INSTALL HELI-COIL SCREW LOCK INSERT 3585-5CNW X 0.625 WITH HELI-COIL INSERTING TOOL NR 7581-5 WITH TOP COIL LOCATION 3/4" TO 1/2" BELOW SURFACE.
6. BREAK OFF DRIVING TANG WITH HELI-COIL TANG BREAK OFF TOOL NR 3695-5.
7. INSERT 5/16"-18 X 1/2" S.S. BOLT INTO HOLE WITH ANTISEIZE COMPOUND (LEO PLATE, MOLYBDENUM DISULFIDE, ETC) BOLTS ARE TO REMAIN WHILE THE CONC IS POURED AND FOR FUTURE TREADLE PAD INSTALLATION, REFER TO SPECIFICATIONS.



**SECTION "C-C"**



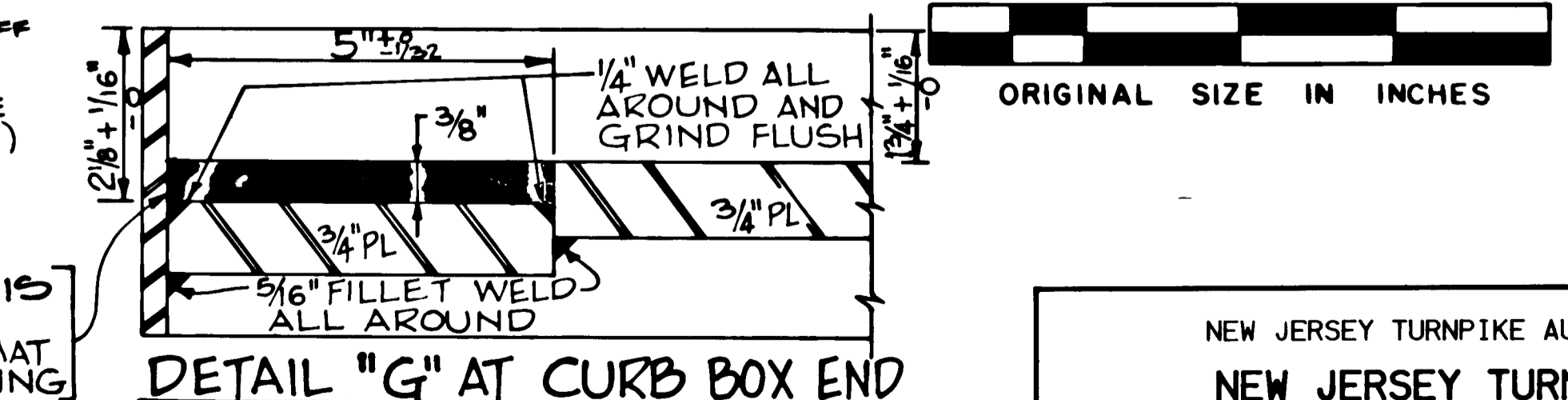
**SECTION "D-D" REAR VIEW**



**TREADLE FRAME**

**SECTION "B-B"**  
 SCALE 3" = 1'-0"

- NOTES:**
1. DIMENSION "A" AND "B" TO BE VERIFIED IN FIELD BY CONTRACTOR
  2. TREADLE FRAME TO BE SET 3/8" TO ONE FOOT PITCH RISING IN DIRECTION OF TRAFFIC, EXCEPT IN A REVERSIBLE LANE WHERE IT SHALL BE SET FLUSH.
  3. ALL TREADLE STEEL = ASTM A-588 UNLESS NOTED.
  4. ALL WELDS - E70XX ELECTRODES.
  5. LEVELING BOLTS SHALL BE APPLIED WHERE INDICATED ON PLAN OF TREADLE FRAME.
  6. LANE DRAIN TO BE PROVIDED AND TIED INTO END 3" PIPE AS INDICATED.
  7. FRAME IS TO BE INSPECTED BY N.J.T.A. ELECTRICAL MAINT. DEPT. BEFORE INSTALLATION
  8. WHENEVER POSSIBLE TIE IN LANE REINFORCING RODS INTO THE TREADLE OUTRIGGERS



**DETAIL "G" AT CURB BOX END**  
 N.T.S.

FOR FURTHER DETAILS, SEE DETAIL "F"

|     |      |                                  |
|-----|------|----------------------------------|
| 2   | 2/86 | NOTE 7 REVISED                   |
| 1   | 5/88 | Minor Revisions                  |
|     | 3/87 | Reissued, Conforms to 1987 Specs |
| APP | NO   | DATE                             |
|     |      | REVISION                         |

NEW JERSEY TURNPIKE AUTHORITY  
 NEW JERSEY TURNPIKE

4 CONTACT TREADLE FRAME LEADS UP

OFFICE OF THE CHIEF ENGINEER  
 NEW BRUNSWICK NEW JERSEY

1987 STANDARD  
 DRAWING TI-7