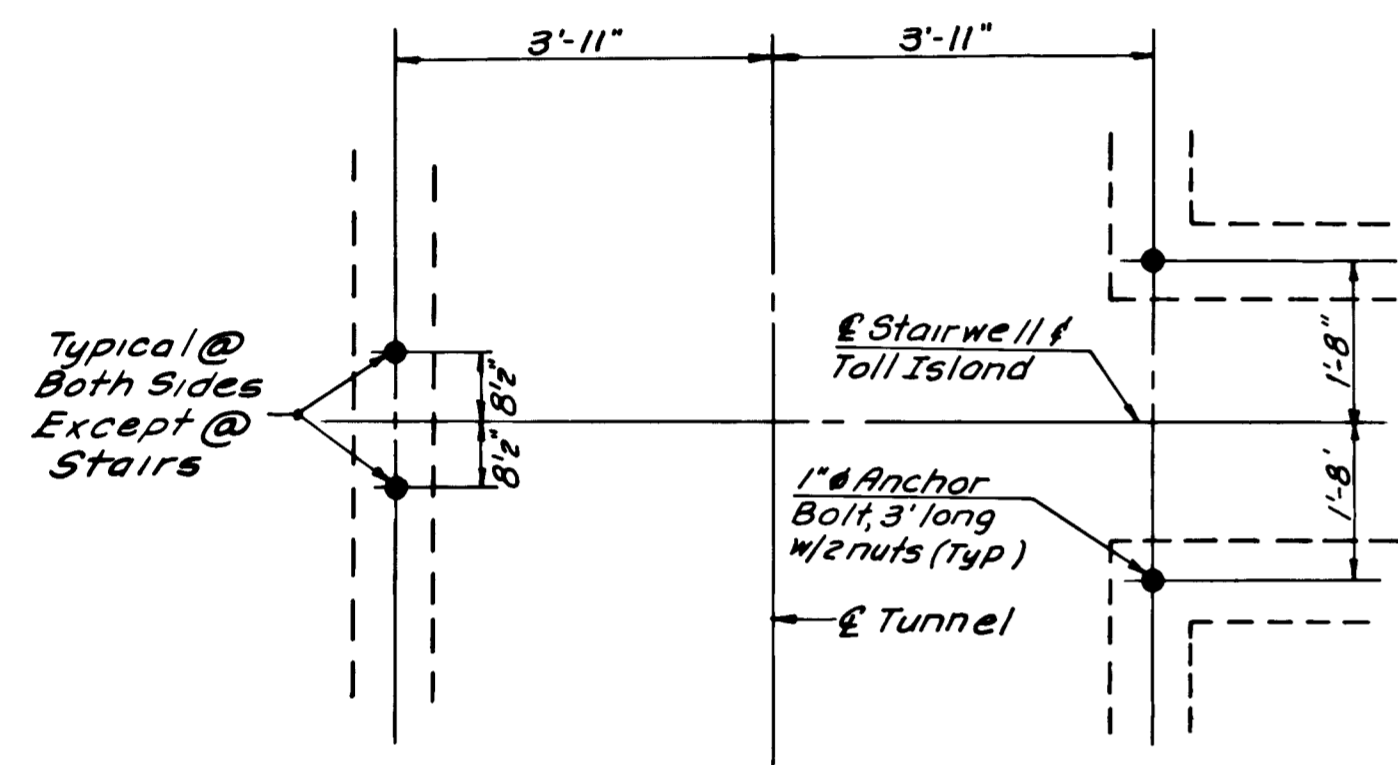
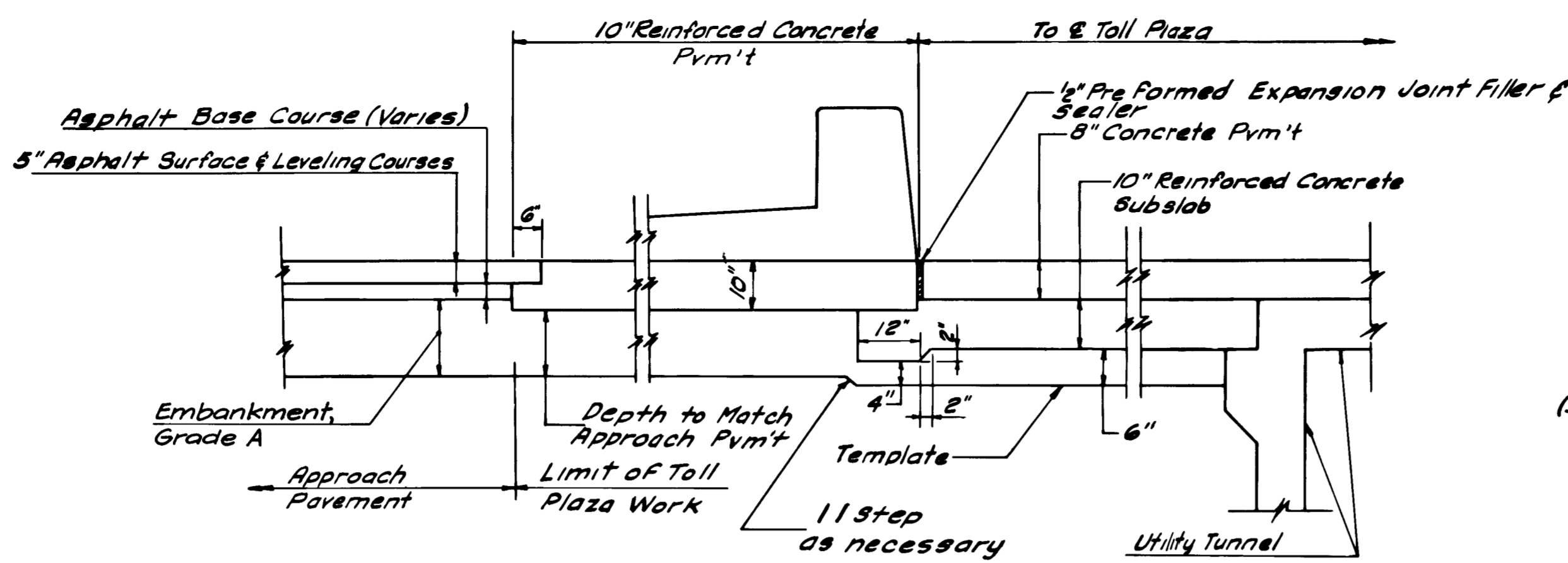


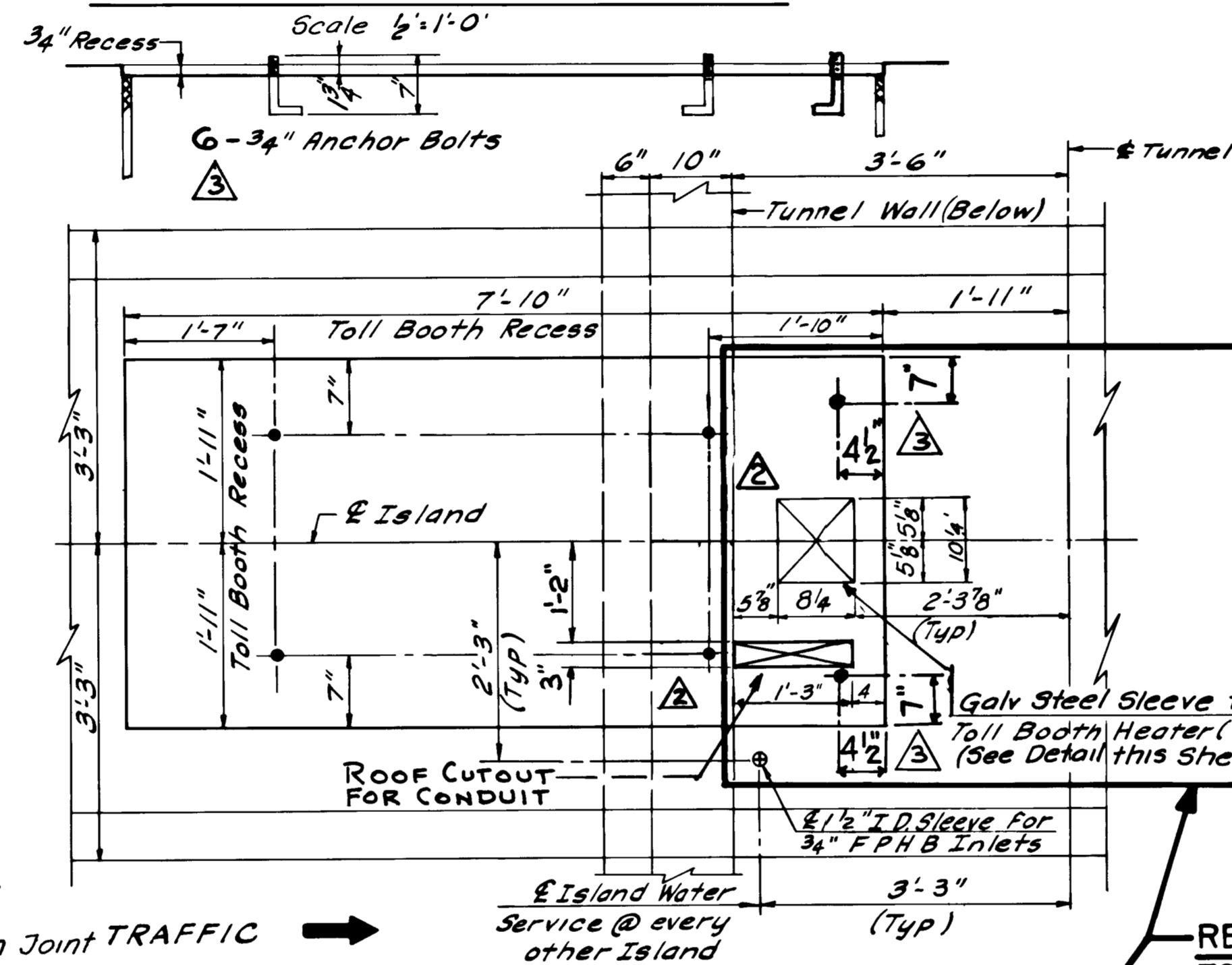
TYPICAL ANCHOR BOLT DETAIL
Scale 3/4"=1'-0"



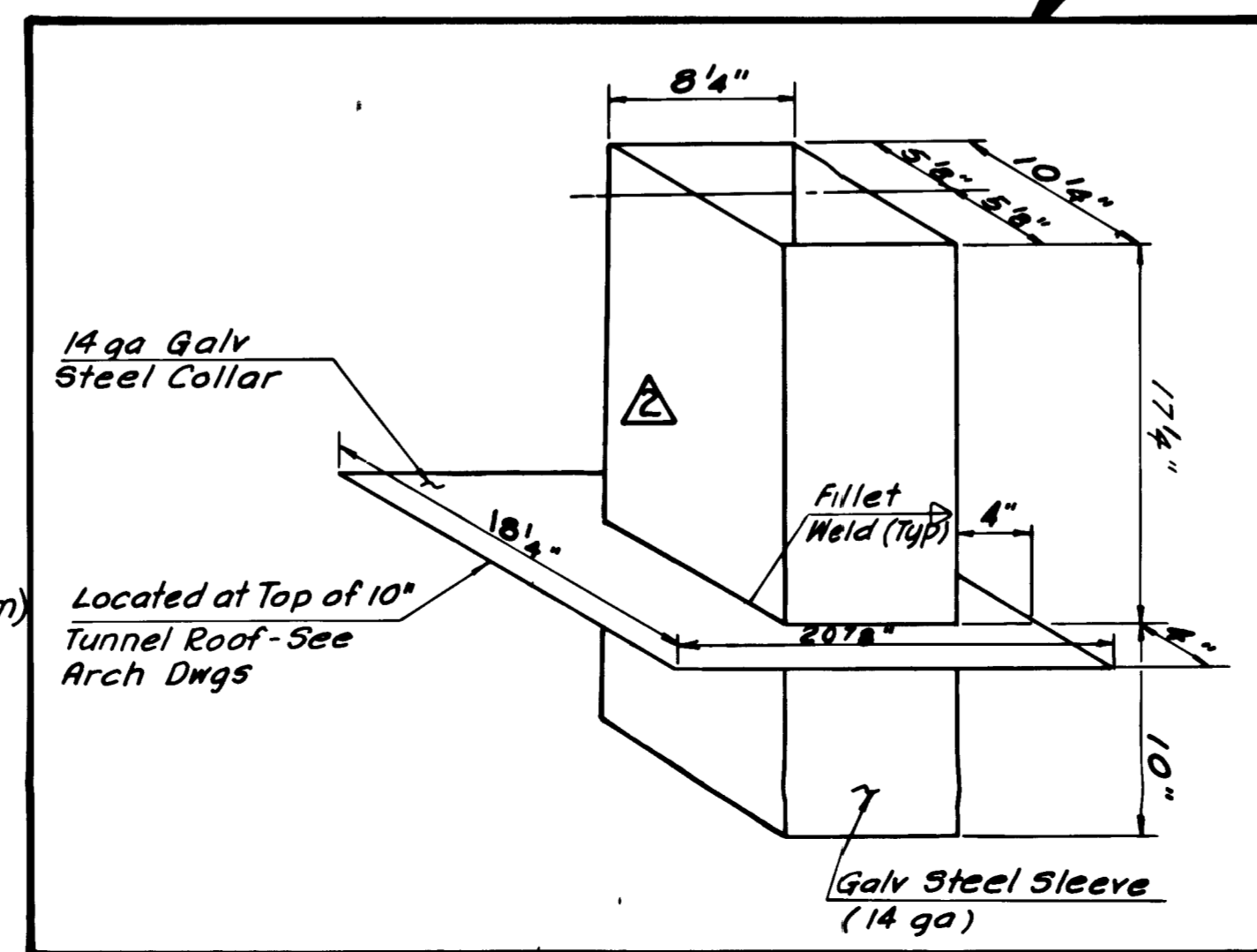
ANCHOR BOLT LAYOUT
Scale 1/2"=1'-0"



LONGITUDINAL SECTION TOLL PLAZA PAVEMENT
Scale 1/2"=1'-0"



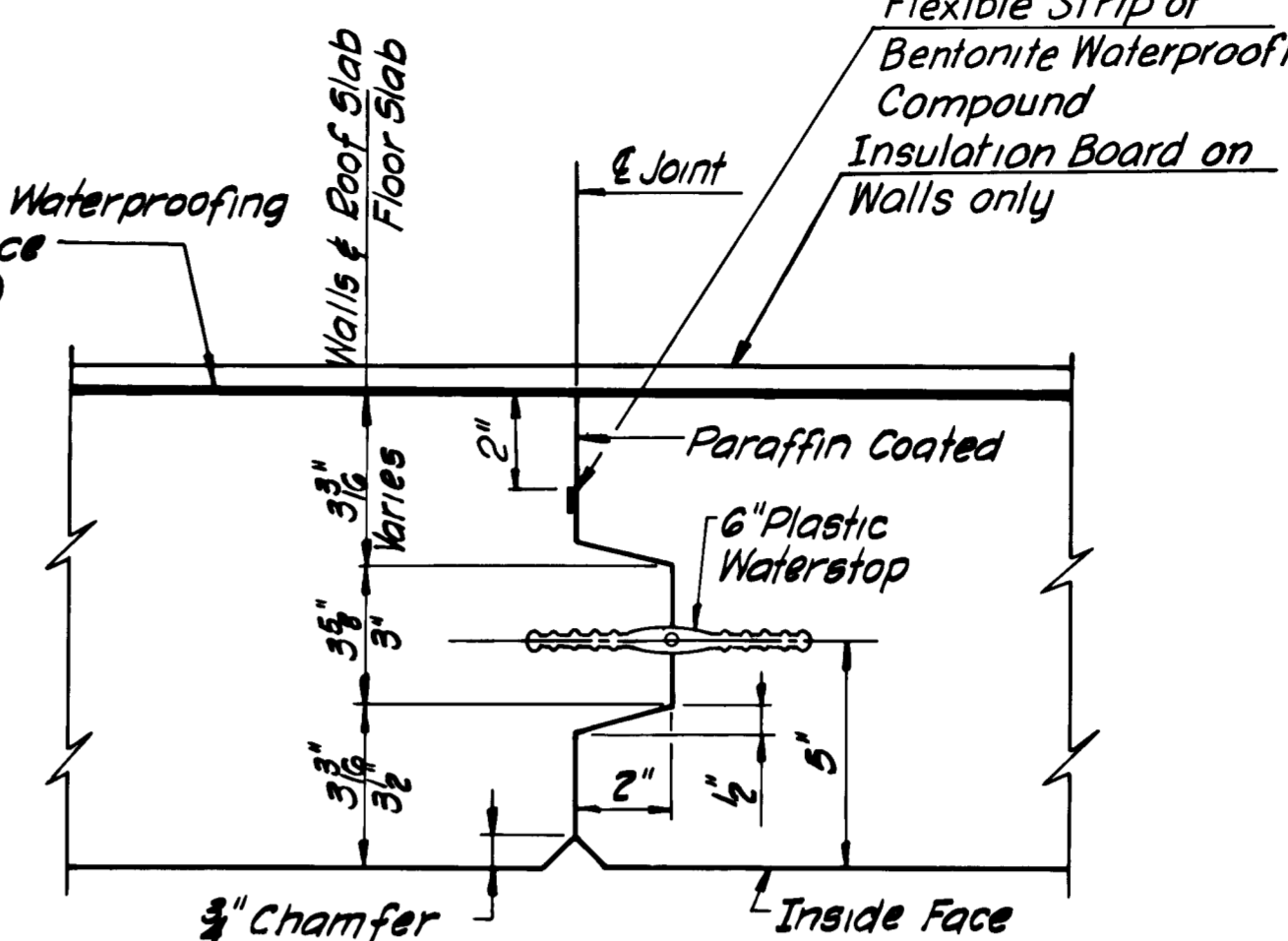
TUNNEL ROOF CUTOUT & SLEEVE LOCATION PLAN
Scale 3/4"=1'-0"



TUNNEL SLEEVE DETAIL
No Scale

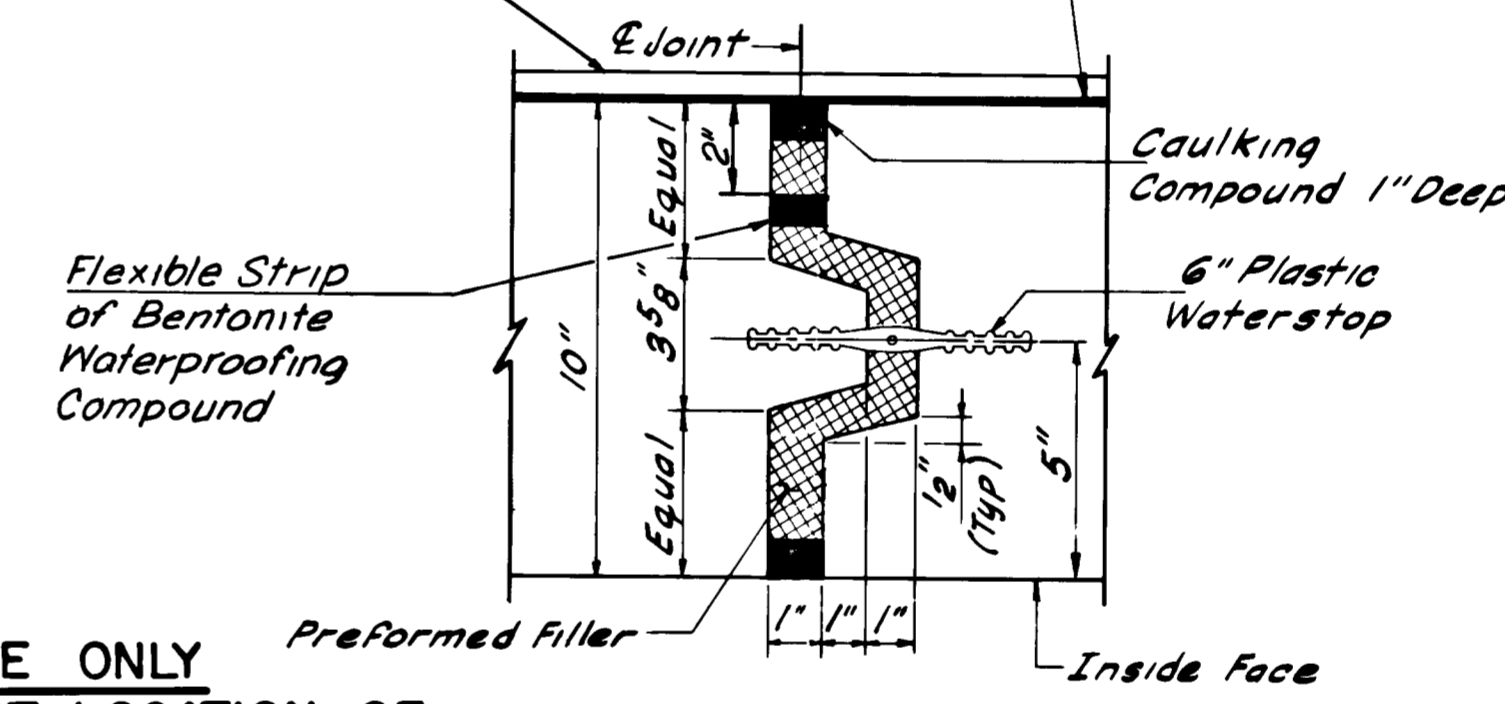
NOTE 1
Membrane Waterproofing shall conform to Sub Section 923.06 (B) or (C)

Membrane Waterproofing and Fill Face (See Note 1)



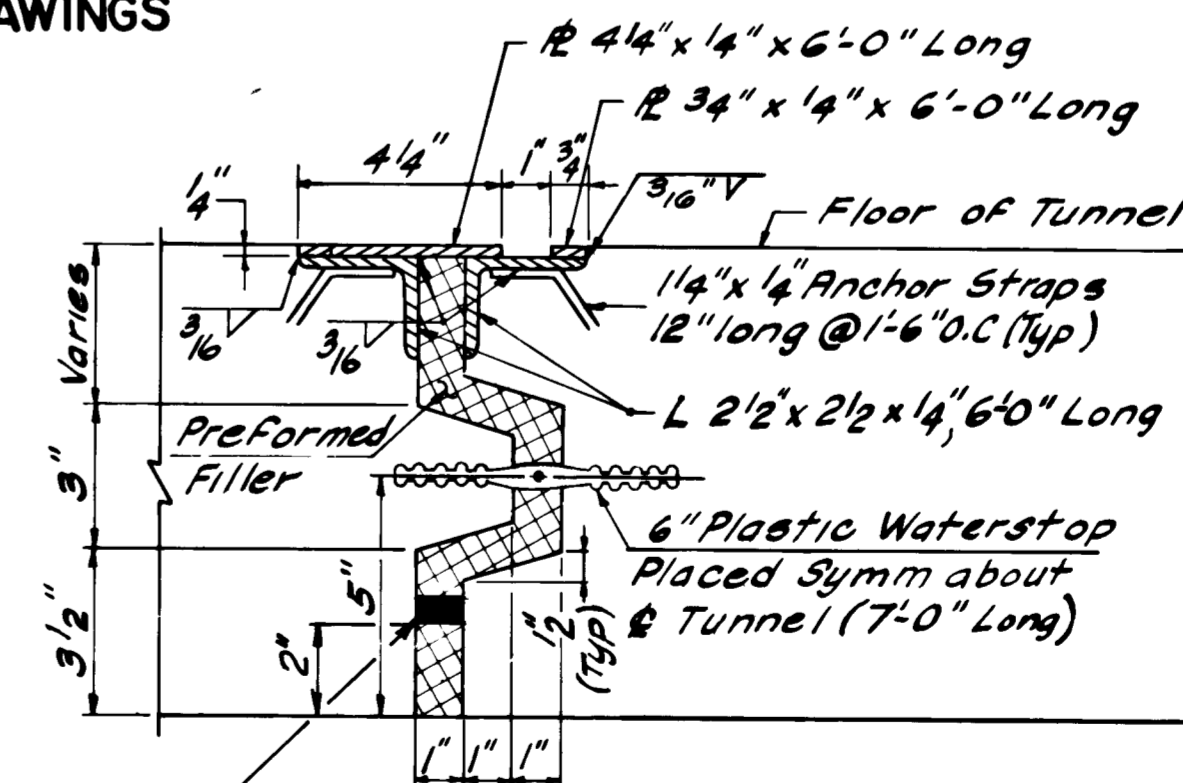
TUNNEL CONTRACTION JOINT DETAILS
Scale 1/4"=1"

Insulation Board on Walls only. Membrane Waterproofing and Fill Face (See Note 1)



WALL AND ROOF SLAB

REFERENCE ONLY
FOR EXACT LOCATION OF DUCT SLEEVES, NUMBER AND LOCATION OF ALL CONDUITS REFER TO CONTRACT DRAWINGS

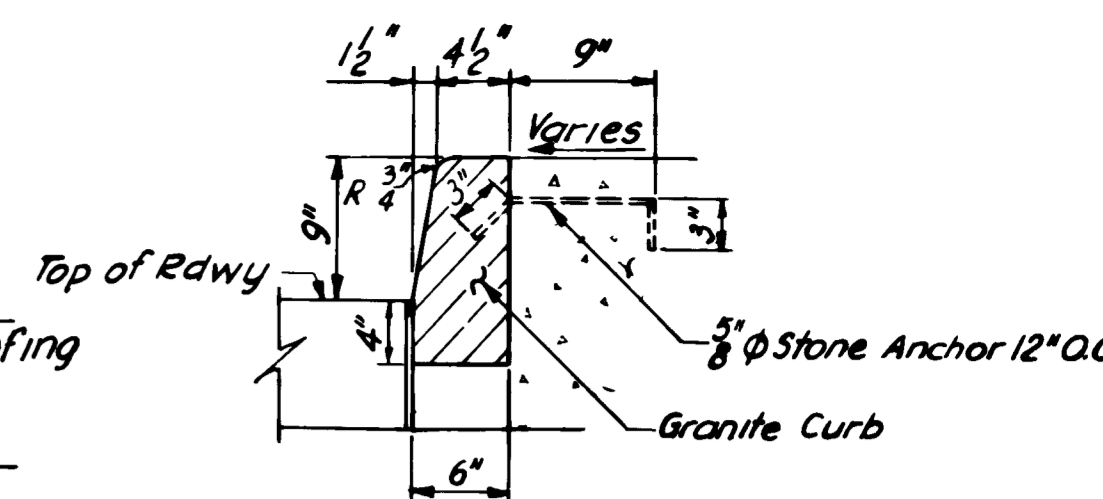


FLOOR SLAB
TUNNEL EXP JT DETAILS
Scale 1/4"=1"

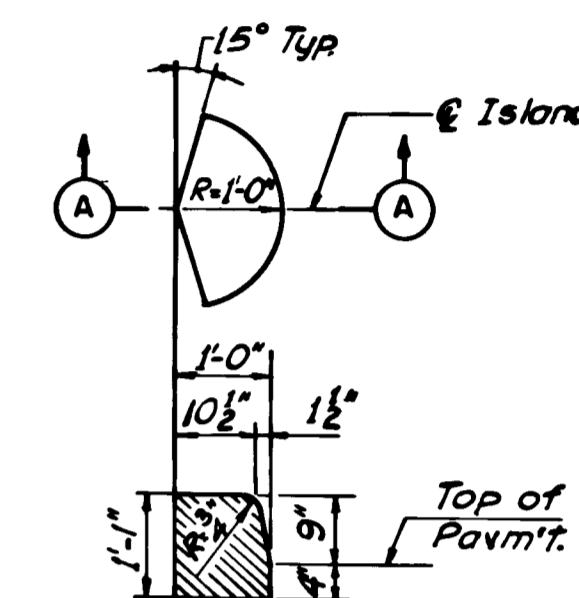
NOTE

Entire metal joint system to be H D galvanized after fabrication
Metal joint system terminates at tunnel gutter

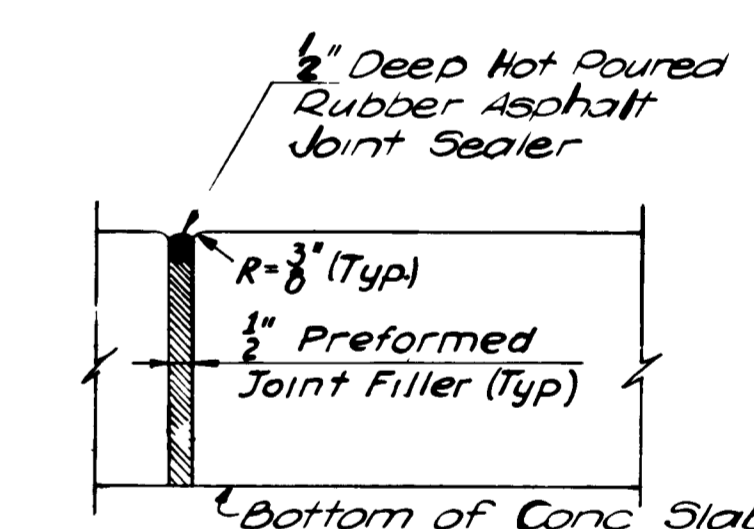
NO	DATE	REVISION	APP	NO	DATE	REVISION
2	8/88	REMOVED HEATING SLEEVE DETAILS				
1	5/88	Minor Revisions				
3	2/98	ADDED 2-3/4" ANCHOR BOLTS AT TOLL BOOTH RECESS				
	3/87	Reissued, Conforms to 1987 Specs				



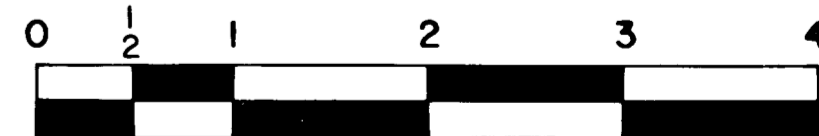
GRANITE CURB DETAIL
Scale 1"-1'-0"



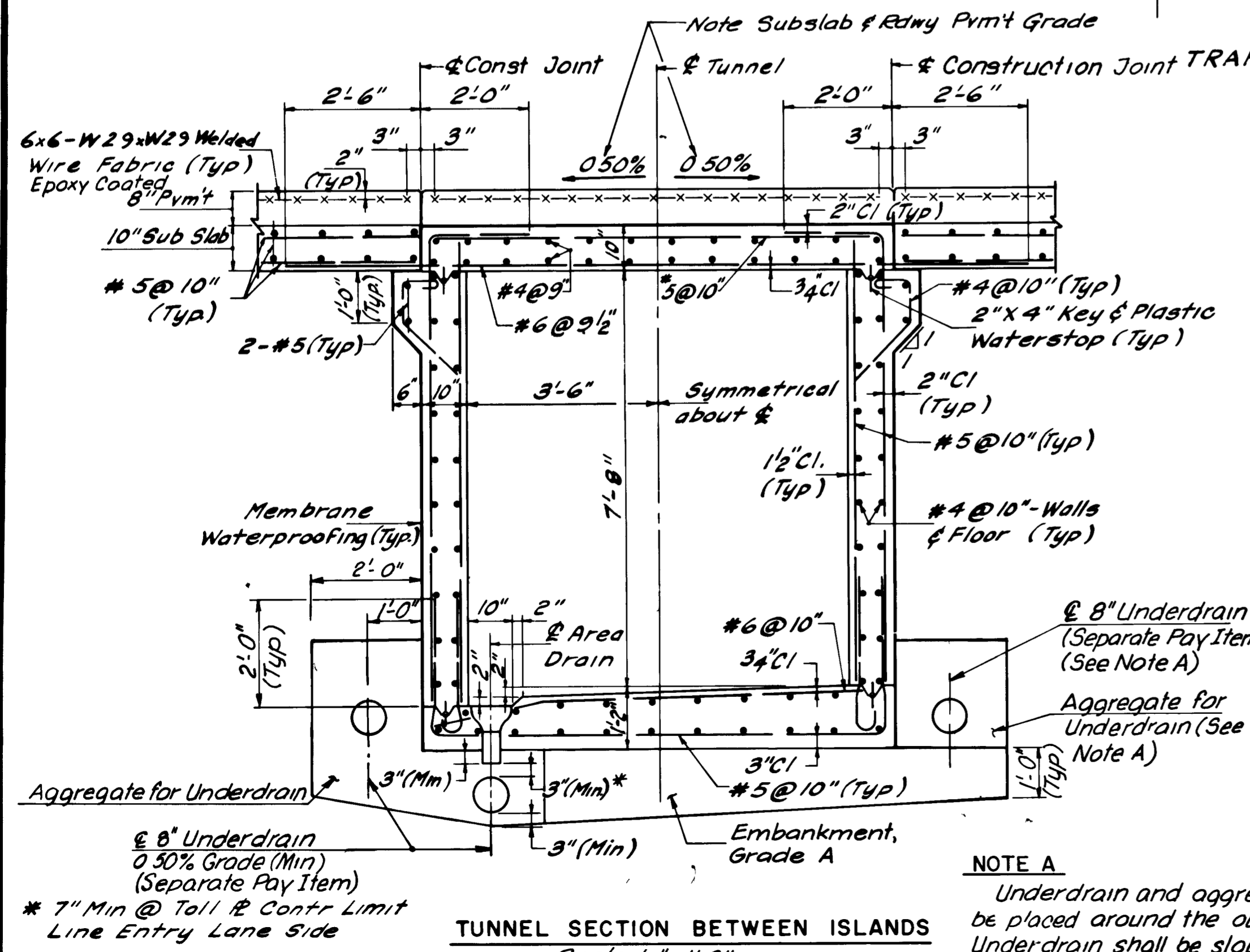
SECTION A-A
GRANITE NOSE DETAIL
Scale 1/2"=1'-0"



PREFORMED EXPANSION JOINT DETAIL
No Scale



ORIGINAL SIZE IN INCHES



TUNNEL SECTION BETWEEN ISLANDS
Scale 1/2"=1'-0"

NOTE A

Underdrain and aggregate for underdrain shall be placed around the outline of the stair walls
Underdrain shall be sloped to drain.

NEW JERSEY TURNPIKE AUTHORITY
NEW JERSEY TURNPIKE

TOLL ISLAND DETAILS - II

OFFICE OF THE CHIEF ENGINEER
NEW BRUNSWICK NEW JERSEY

1987 STANDARD
DRAWING TI-5