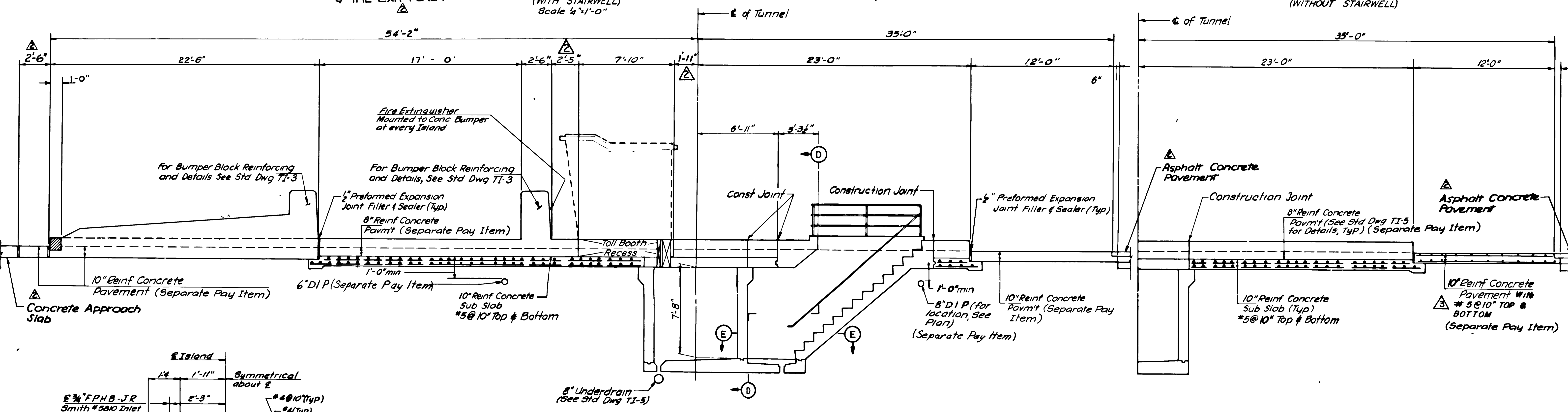


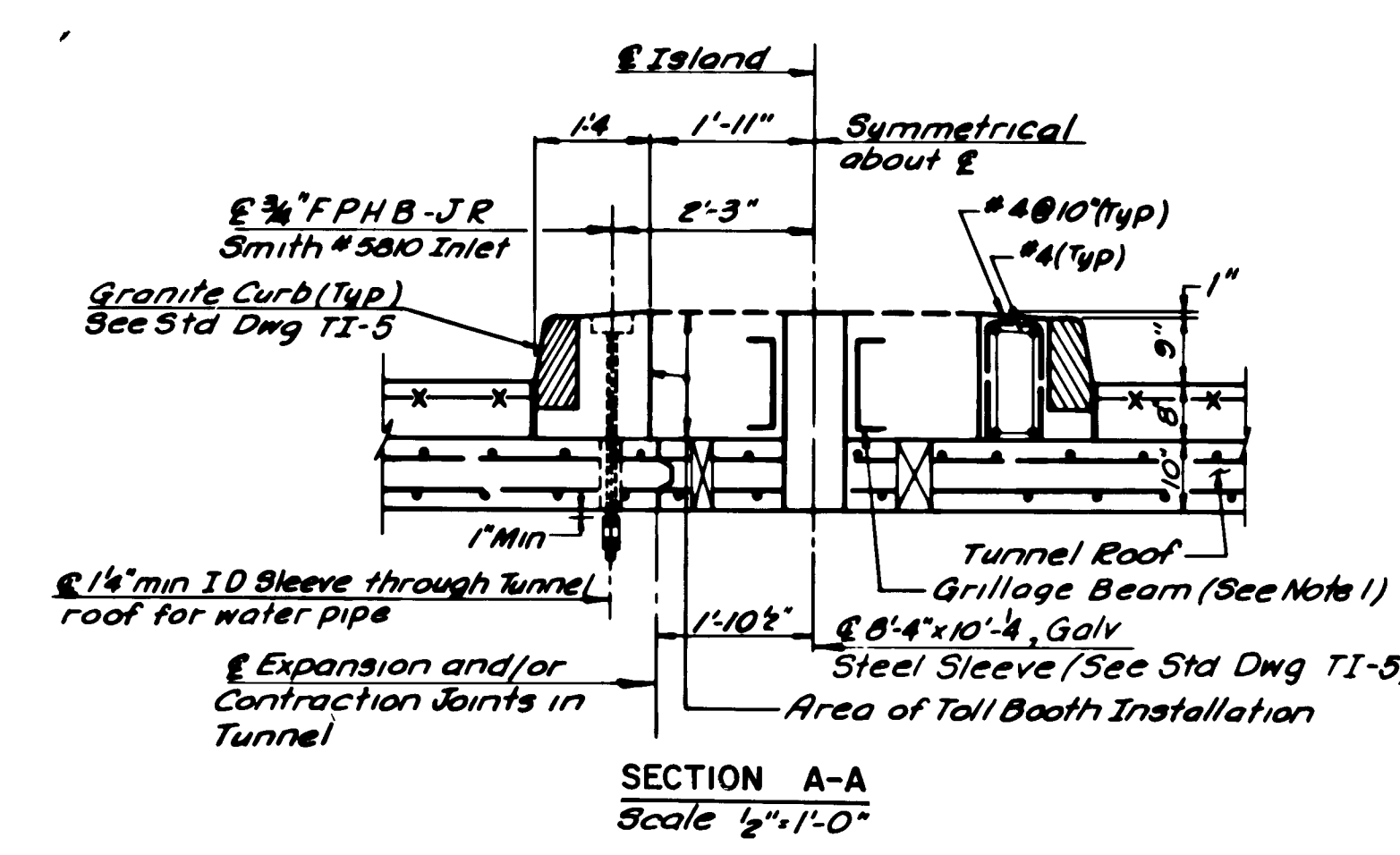
PLAN OF TOLL ISLAND
(WITH STAIRWELL)
Scale 1/4"=1'-0"

PART PLAN OF TOLL ISLAND
(WITHOUT STAIRWELL)

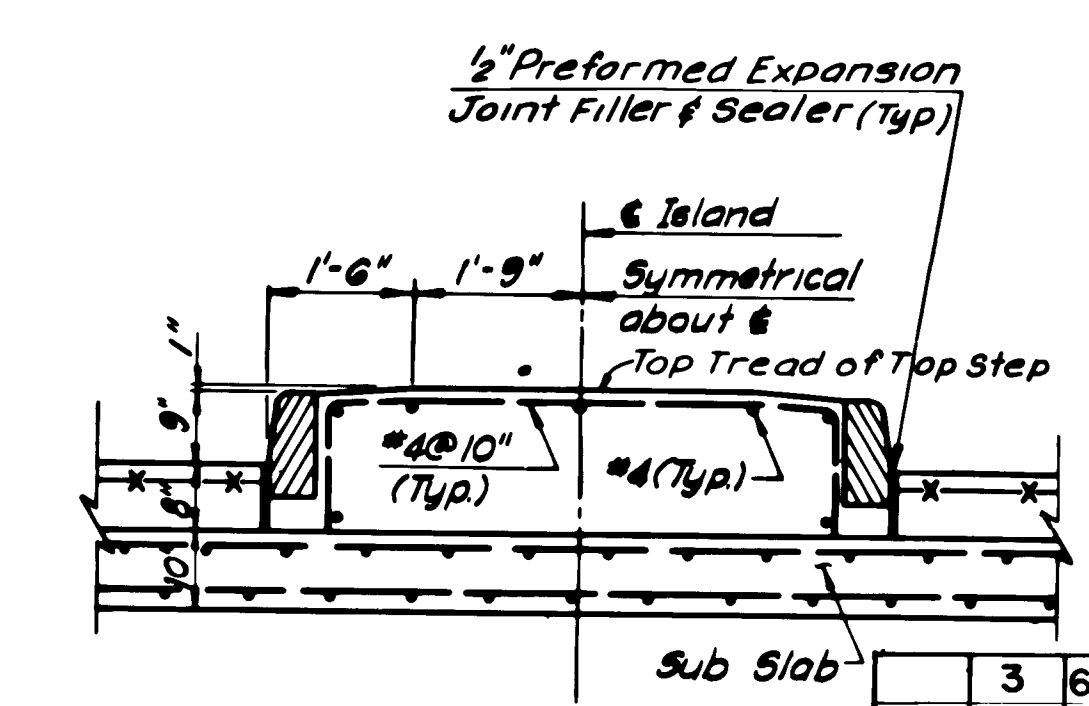


ELEVATION AT CL OF TOLL ISLAND
(WITH STAIRWELL)
Scale 1/4"=1'-0"

PART ELEVATION AT CL OF TOLL ISLAND
(WITHOUT STAIRWELL)



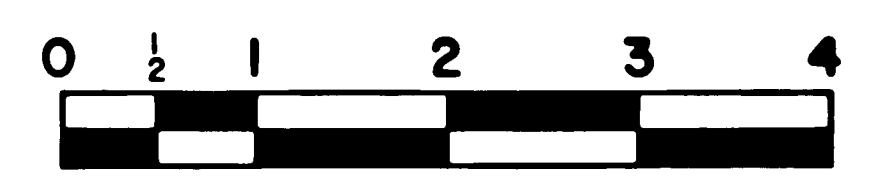
SECTION A-A
Scale 1/2"=1'-0"



SECTION B-B
Scale 1/2"=1'-0"

CONCRETE CLASSES:
 • Concrete in tunnel, stairwells, toll islands, bumper blocks and 10" subslab shall be Class B
 • Concrete in 8" and 10" pavement slabs shall be Class A.

- NOTES**
 1 For Grillage Beam Details See Plans
 2 For Sections C-C, D-D & E-E, see Std Dwg TI-4
 3 Reinforcement steel or mesh in Bumper Block, Island and Pavement Slab shall be epoxy coated.



ORIGINAL SIZE IN INCHES

3	6/93	Revised Reinf Conc Pavement Reinf
2	8/88	REVISED TOLL ISLAND DIMENSIONS & ADDED NOTES
1	5/88	Minor Revisions
	3/87	Reissued, Conforms to 1987 Specs.
APP	NO	DATE
		REVISION

NEW JERSEY TURNPIKE AUTHORITY
 NEW JERSEY TURNPIKE
 TYPICAL TOLL ISLAND
 - SPLIT PLAZA

OFFICE OF THE CHIEF ENGINEER
 NEW BRUNSWICK NEW JERSEY

1987 STANDARD
 DRAWING TI-1