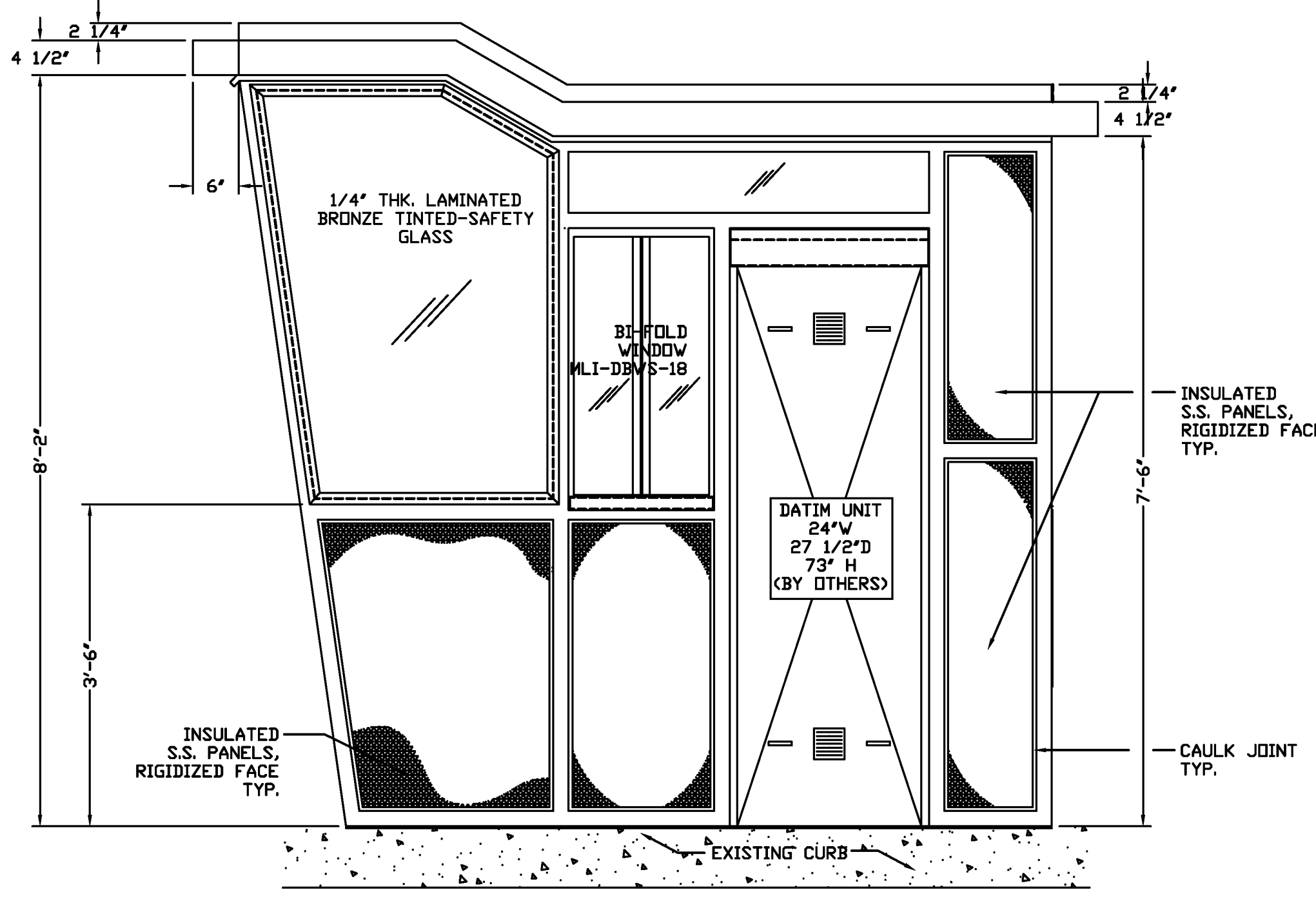


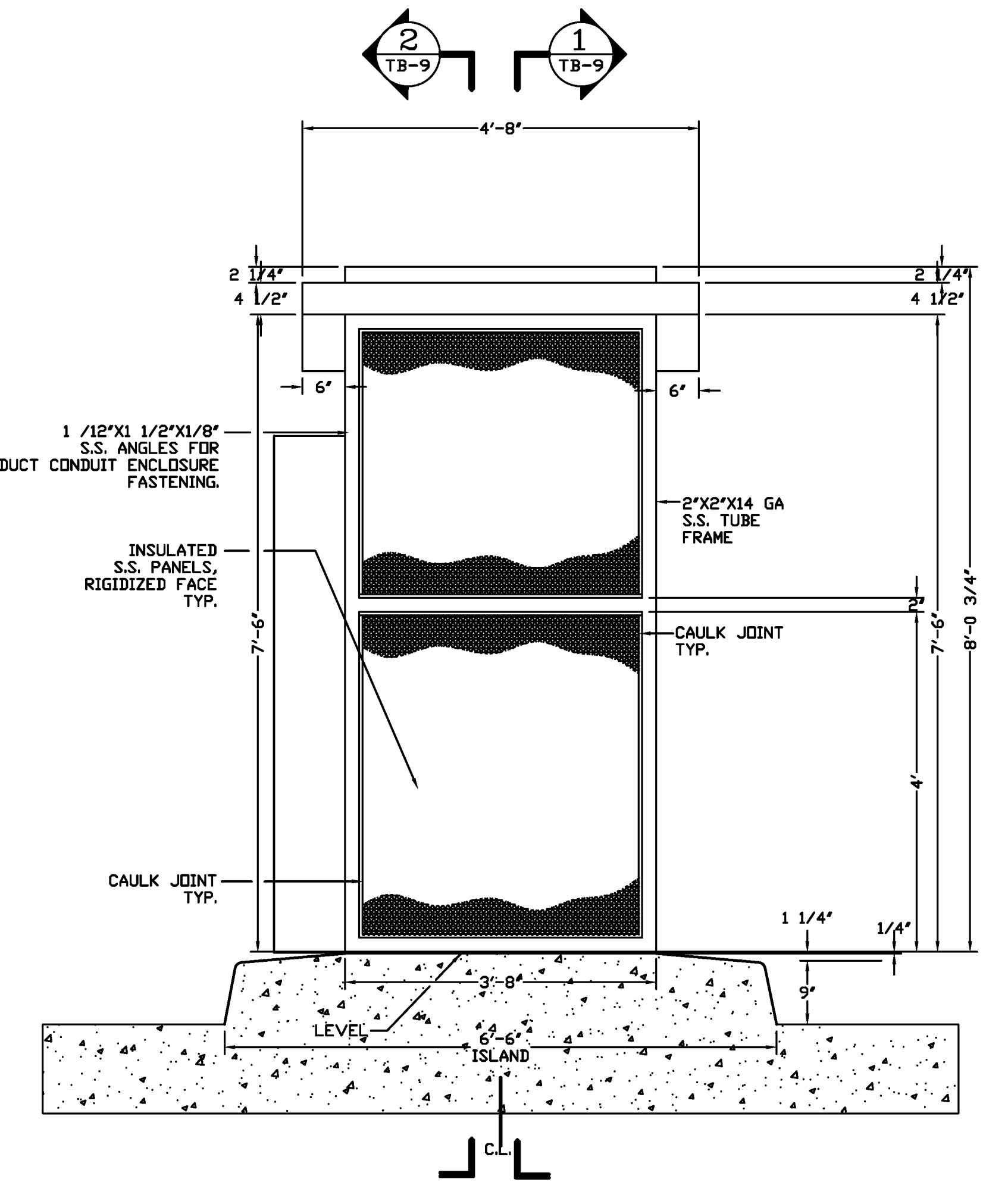
**ELEVATION - FRONT**

SCALE: 3/4" = 1'-0"



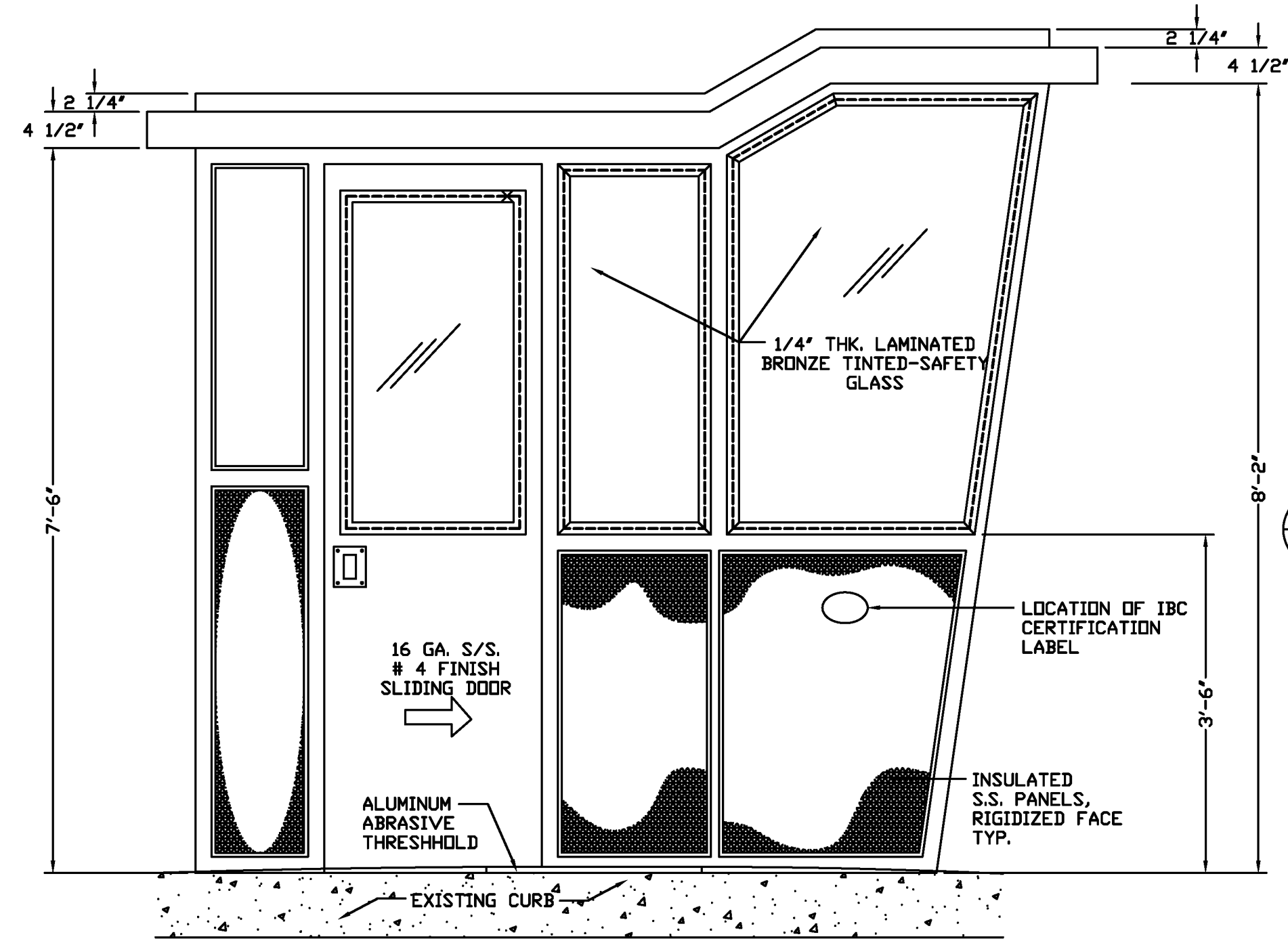
**ELEVATION - LEFT SIDE**

SCALE: 3/4" = 1'-0"



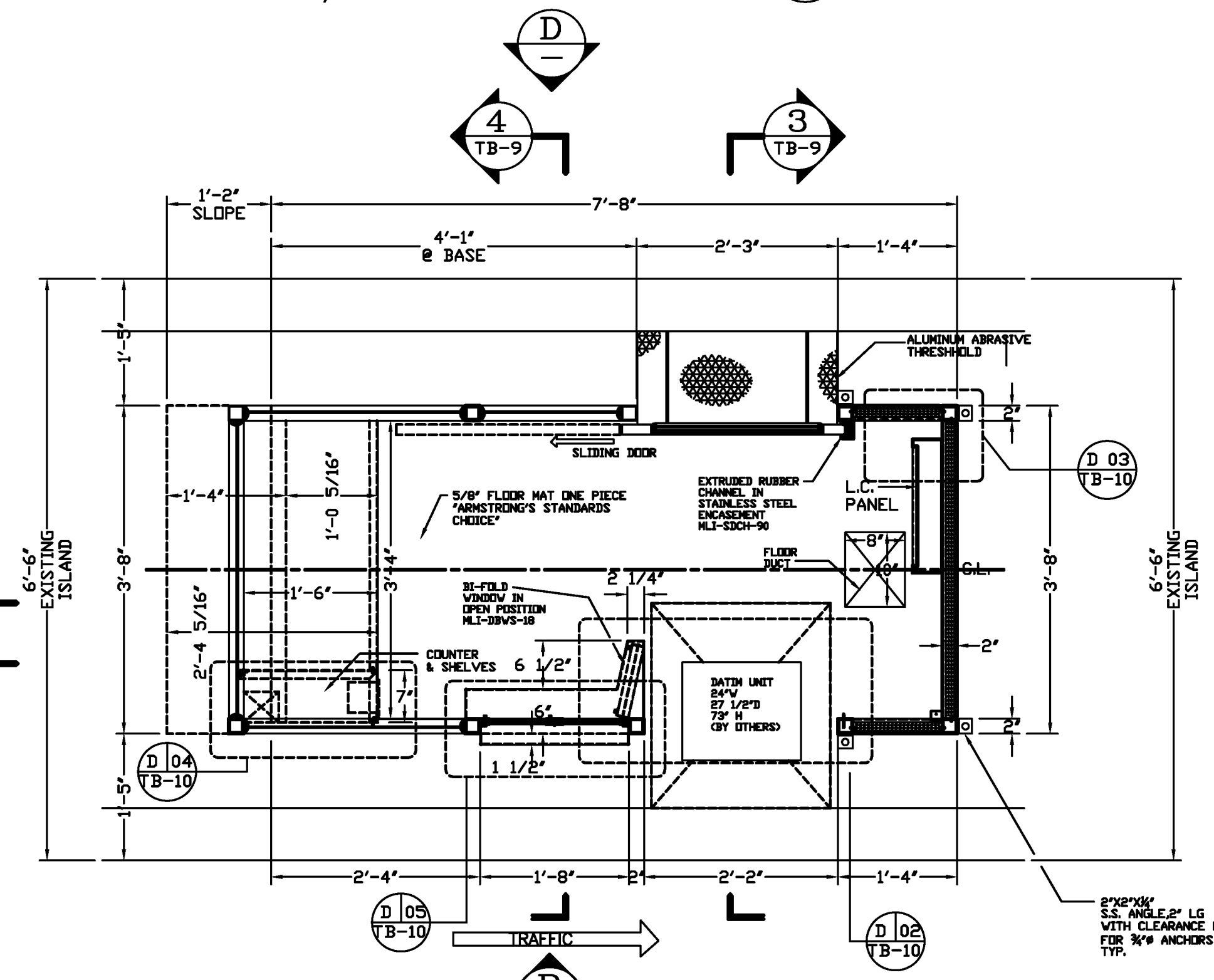
**ELEVATION - REAR**

SCALE: 3/4" = 1'-0"



**ELEVATION - RIGHT SIDE**

SCALE: 3/4" = 1'-0"

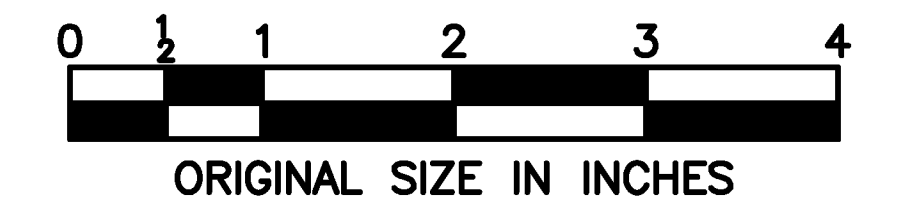


**PLAN OF DATIM UNIT ENCLOSURE**

SCALE: 3/4" = 1'-0"

**GENERAL NOTES - MATERIALS DESCRIPTION**

- GLAZING GASKET** - STANLOCK #SL-2005 - BLACK - WITH MOUNDED CORNERS
- FRAME** - FABRICATE OF 14 GA. 2" SQUARE STAINLESS STEEL TUBES - ALL JOINTS WELDED AND GROUND SMOOTH - #4 FINISH.
- PANELS** - EXTERIOR SURFACE - 20 GA. RIGIDIZED STAINLESS STEEL - PATTERN NO. SVL - UNPAINTED, BY RIGIDIZED METALS CORP. INTERIOR SURFACE - 20 GA. STAINLESS STEEL - #4 FINISH - LAMINATED TO PLYWOOD CORE MATERIAL - LAMINATED TO 1-1/2" +/- THICKNESS - ADHERE 2 LAYERS OF PLYWOOD TOGETHER - AND STAINLESS STEEL TO PLYWOOD CORE.
- GLAZING** - GLASS - 1/4" THICK LAMINATED BRONZE TINTED SAFETY GLASS (50-55% TRANSMITTANCE) MEETING ANST-2971-1975 & 16CFR 1201 CATEGORY II REQUIREMENTS.
- SLIDING DOOR** - FABRICATE OF 16 GA. STAINLESS STEEL - #4 FINISH - INSULATE WITH DOW STYROFOAM - REINFORCE FOR ALL HARDWARE - NYLON BRUSH SWEEPS - RUBBER OR NEOPRENE BUMPERS
- FLOORING** - ARMSTRONG 'STANDER'S CHOICE' HEALTH MAT - 5/8" DA THICK - WITH 0.060 VINYL CORLON WEAR SURFACE AND POLYURETHANE FOAM BACK - #84002 'ENGLISH ROAD' - FURNISH IN ONE PIECE - LOOSE LAID.
- CAULKING** - THICK POLYSULFIDE SEALANT
- THRESHOLDS** - ALUMINUM DIAMOND PLATE -
- BASE FLANGE ANGLE** - FABRICATE OF 11 GA. STAINLESS STEEL - FORMED 2" X 5/8" - ALL SIDES
- THE FLAME SPREAD FOR THE DOW STYROFOAM = 10
- THE SMOKE DEVELOPMENT OF THE DOW STYROFOAM = 45
- ADDITIONAL MATERIAL** - PROVIDE A REMOVABLE 16 GA. STAINLESS STEEL DATIM UNIT OPENING WEATHER TIGHT COVER PANEL WITH EACH DATIM ENCLOSURE. COVER TO BE ATTACHED TO INSIDE OF OPENING UNTIL DATIM UNIT IS INSTALLED. FOR DETAIL SEE SHEET TB-10.



APP. NO.	02/10	DATE	02/10	ORIGINAL DRAWING
				REVISION

CONTRACT NO.

**NEW JERSEY TURNPIKE AUTHORITY  
NEW JERSEY TURNPIKE**

**DATIM ENCLOSURE  
PLAN AND ELEVATIONS**

OFFICE OF THE CHIEF ENGINEER  
WOODBRIE, NEW JERSEY

2010 STANDARD  
DRAWING  
**TB-8**

SHEET NO. OF