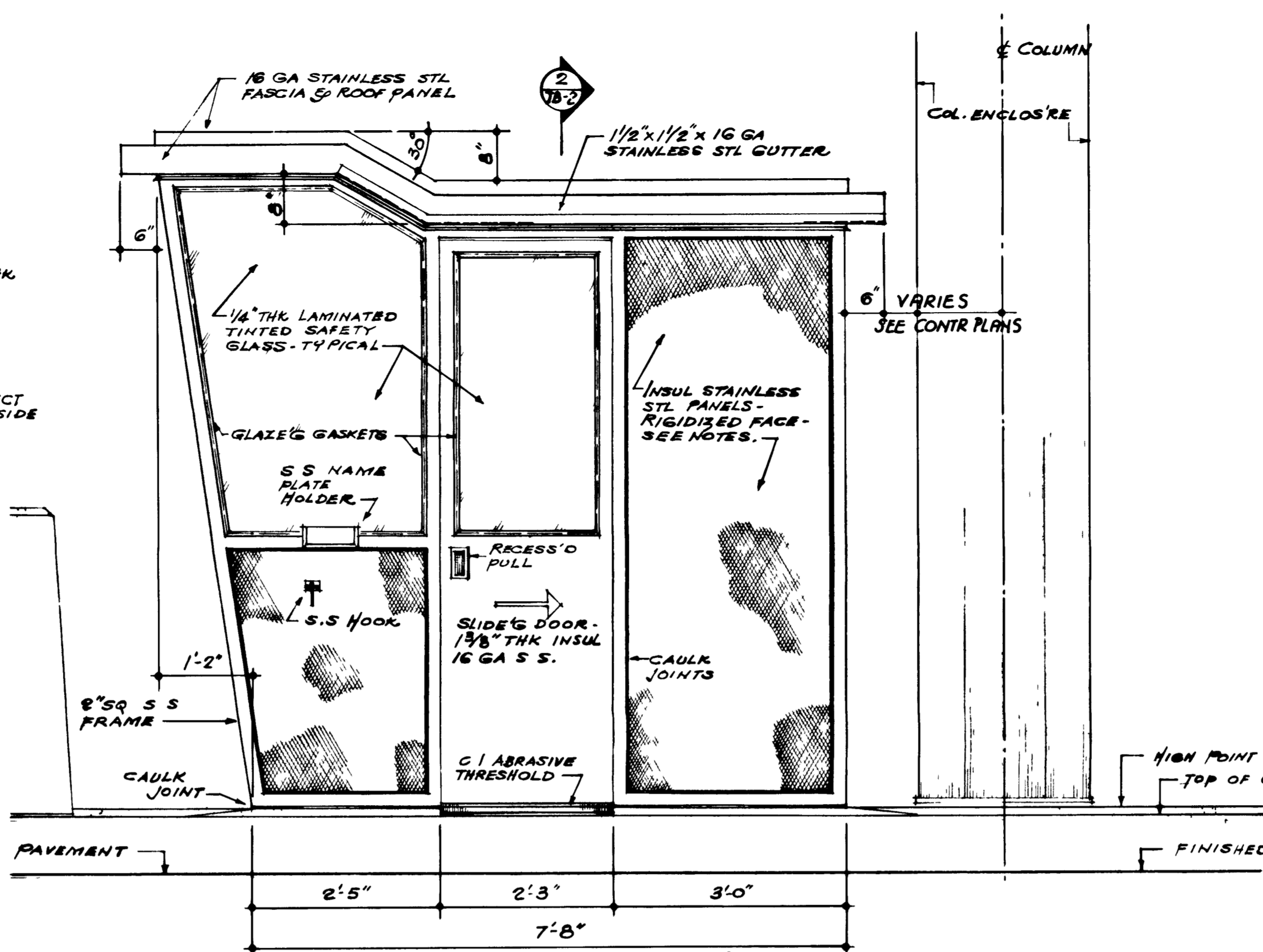
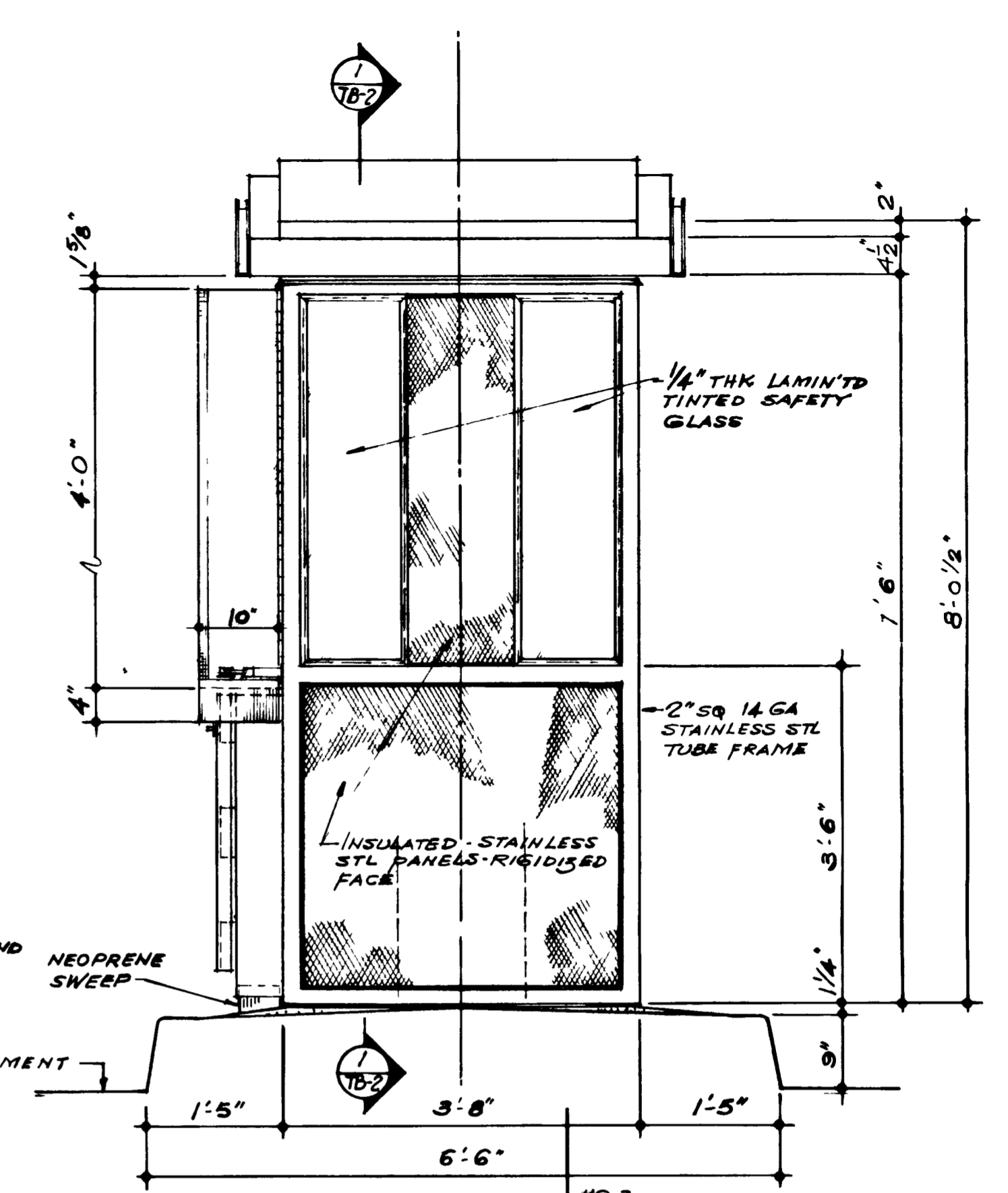


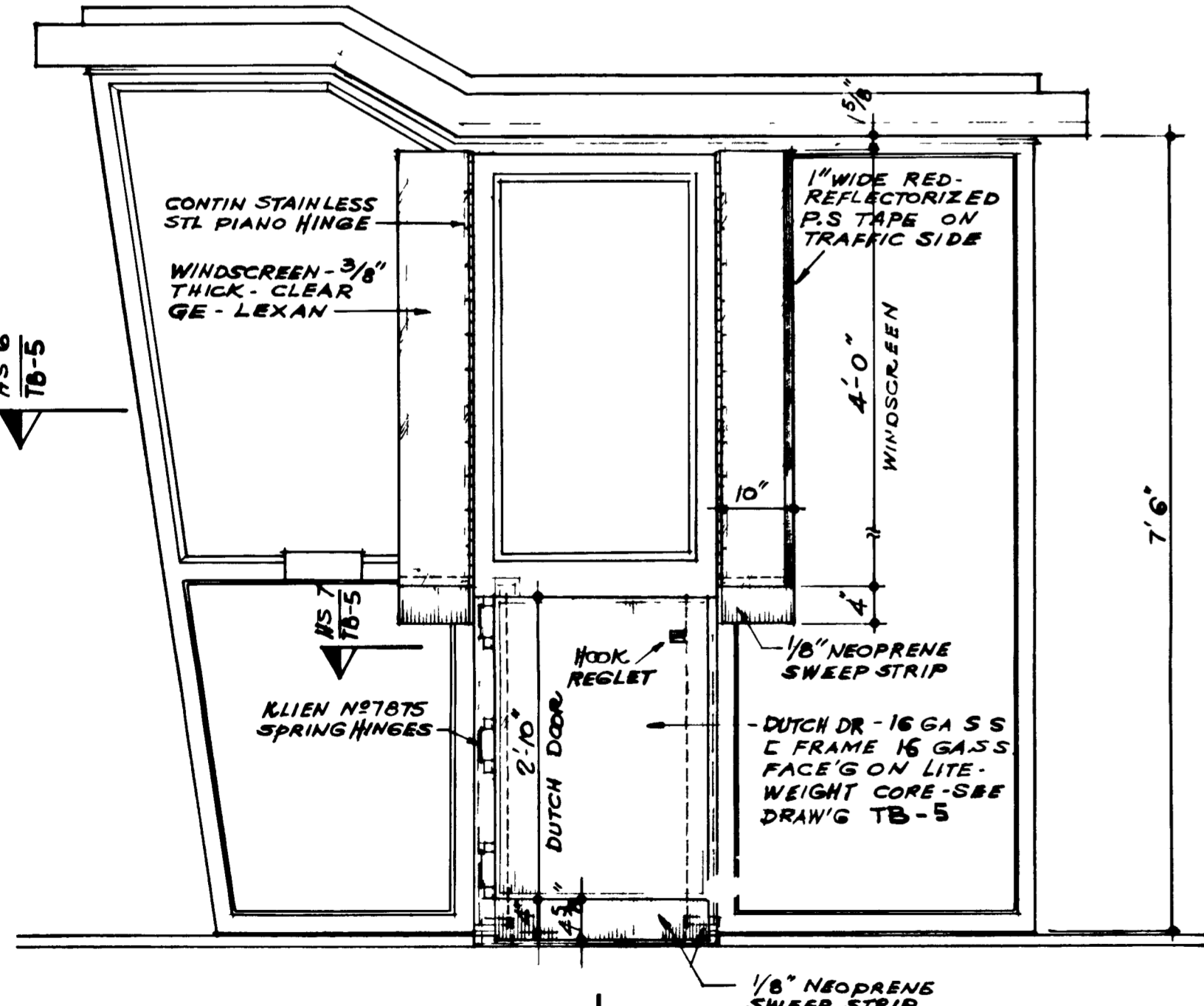
ELEVATION A



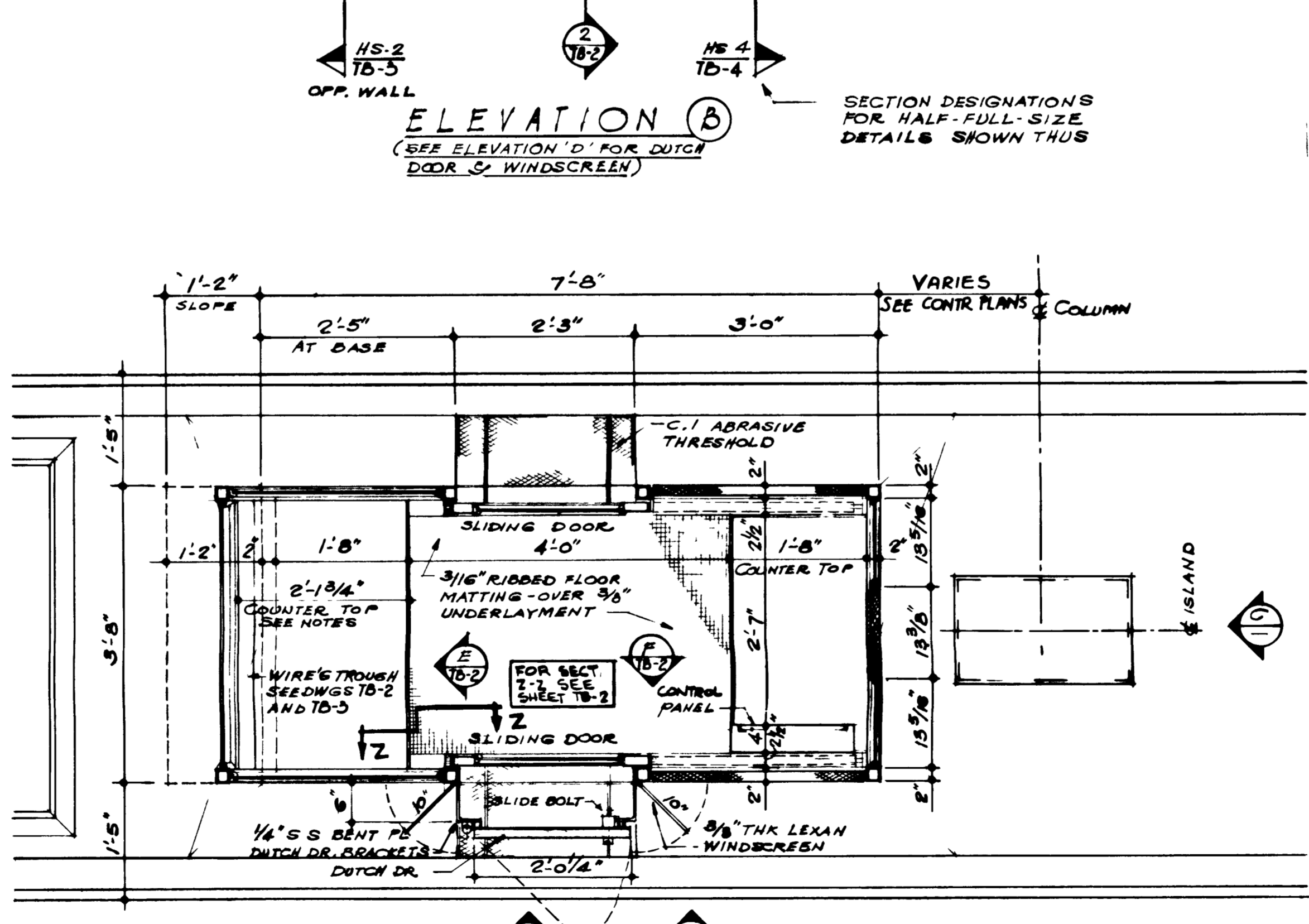
ELEVATION B



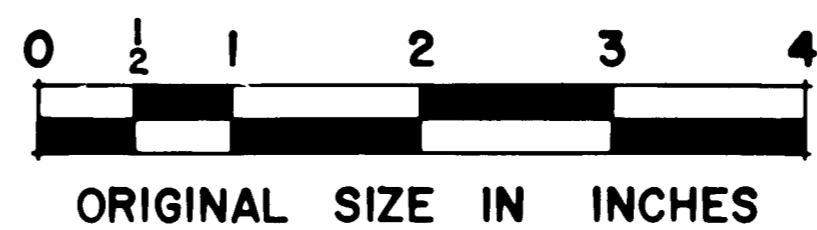
ELEVATION C



ELEVATION D



PLAN OF TOLL BOOTH
SCALE 3/4" = 1'-0"



GENERAL NOTES - MATERIALS DESCRIPTION

- GLAZE'G GASKET - STANLOCK NO SL 2005 - BLACK - WITH MOULDED CORNERS
- FRAME - FABRICATE OF 14 GA 2" SQUARE STAINLESS STEEL TUBES - ALL JOINTS WELDED AND GROUND SMOOTH - #4 FINISH
- PANELS - EXTERIOR SURFACE - 20 GA RIGIDIZED STAINLESS STEEL - PATTERN NR 5WL BY RIGIDIZED METALS CORP. INTERIOR SURFACE - 20 GA STAINLESS STEEL - #4 FINISH. CORE MATERIAL - 1/2" THICK DOW STYROFOAM - TYPE FR. LAMINATE TO EXTERIOR / INTERIOR PANELS WITH DOW NR 11 ADHESIVE
- GLAZING - 1/4" LAMINATED SAFETY GLASS - BRONZE TINTED (50-55% TRANSMITTANCE) MEETING ANSI Z97.1-1975 AND 16CFR1201 CATEGORY II REQUIREMENTS
- SLIDING DOOR - FABRICATE OF 16 GA STAINLESS STEEL - #4 FINISH - INSULATE WITH DOW STYROFOAM - REINFORCE FOR ALL HARDWARE - CLOSED CELL NEOPRENE SWEEPS AND BUMPERS
- DUTCH DOORS - FABRICATE OF 16 GA STAINLESS STEEL - #4 FINISH - LAMINATE TO 1/2" DOW STYROFOAM / TEMPERED MASONITE SANDWICH PANEL - 16 GA. S.S CHANNEL FRAME - 4 SIDED - REINFORCE FOR ALL HARDWARE - 1/8" NEOPRENE SWEEP STRIPS
- WIND SCREENS - OF 3/8" GENERAL ELECTRIC "LEXAN" CLEAR PLASTIC - HANG ON CONTINUOUS S.S PLANO HINGES - W/ WRIGHT #50 PLATED STAY BRACKETS - 1/8" NEOPRENE SWEEP STRIPS - 1" WIDE RED REFLECTIVE PRESSURE SENSITIVE TAPE ON OUTER TRAFFIC SIDE EDGES
- COUNTER TOPS - OF 3/4" THICK - JOHN'S MANVILLE - BLACK - COLORLITH
- FLOORING - TOP SURFACE OF 3/16" THK RIBBED DUAL-CORDED MATTING - BY AMERICAN MAT CO. UNDERLAYMENT - JOHN'S MANVILLE - 3/8" THK INDUSTRIAL FLOOR PLANK 'G. CEM TO CONC
- CAULKING - THICKOL POLYSULFIDE SEALANT
- THRESHOLDS - ABRASIVE CAST IRON "FERALUN" BY AMER. ABRASIVE METALS CO.
- BASE FLANGE ANGLE - FABRICATE OF 11 GA STAINLESS STEEL - FORMED 2" x 3/8" - ALL SIDES

NOTE:
STANDARD DRAWINGS TB-1 THROUGH TB-6 HAVE BEEN PREPARED TO BE PART OF A "TOLL BOOTH CONTRACT" WORK NOT TO BE DONE BY THE "TOLL BOOTH CONTRACTOR" IS IDENTIFIED THROUGH OUT THESE PLANS AS BEING DONE BY OTHERS. HOWEVER IF PART OF GENERAL CONTRACT THE GENERAL CONTRACTOR IS TO PERFORM ALL WORK IDENTIFIED AS BEING DONE "BY OTHERS"

NEW JERSEY TURNPIKE AUTHORITY
NEW JERSEY TURNPIKE
TOLL BOOTH PLAN and ELEVATIONS
ENGINEERING DEPARTMENT
NEW BRUNSWICK, NEW JERSEY
STANDARD DRAWING TB-1

3-87	REISSUED, CONFORMS TO 1987 SPECS		
No	DATE	REVISION	