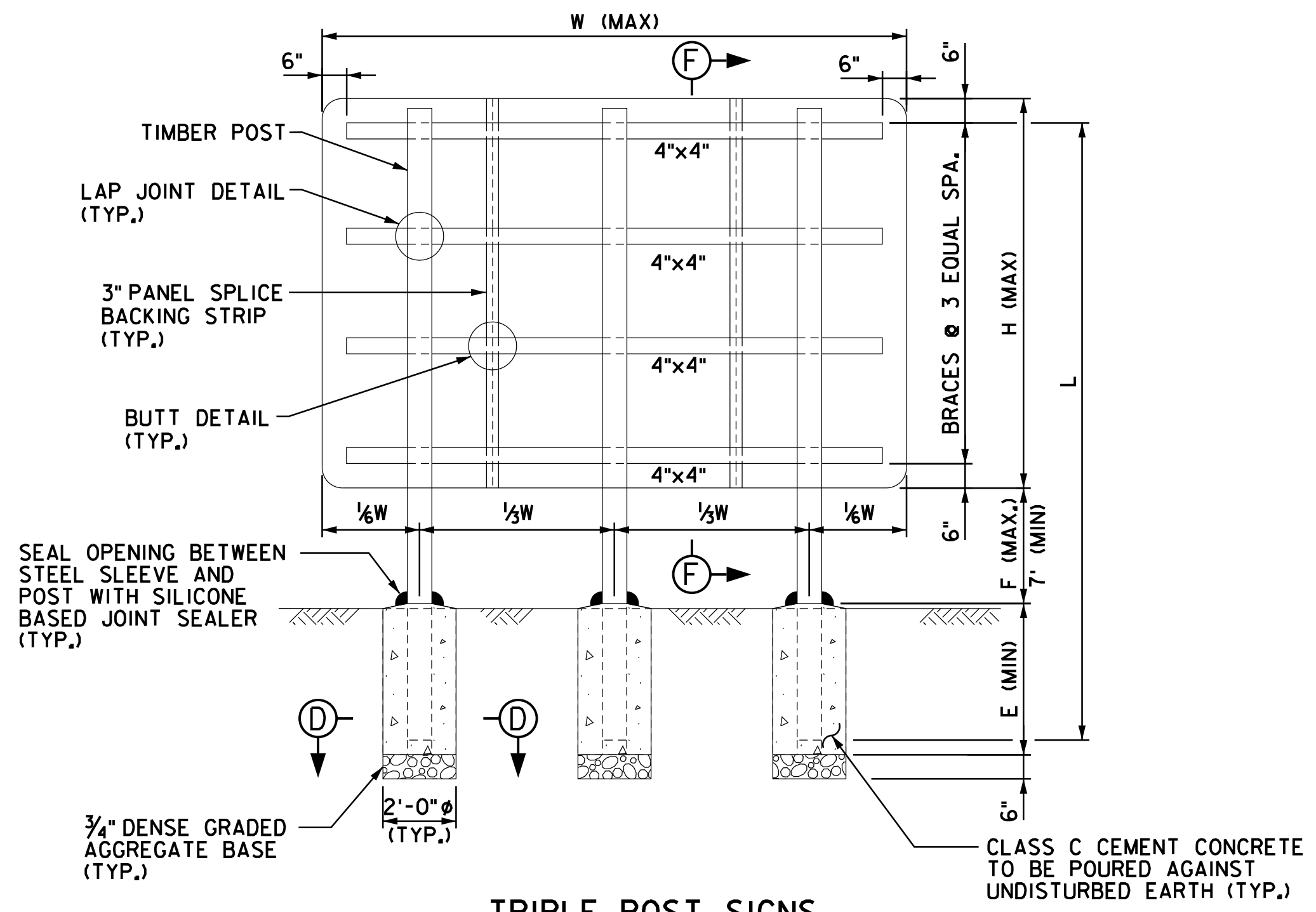
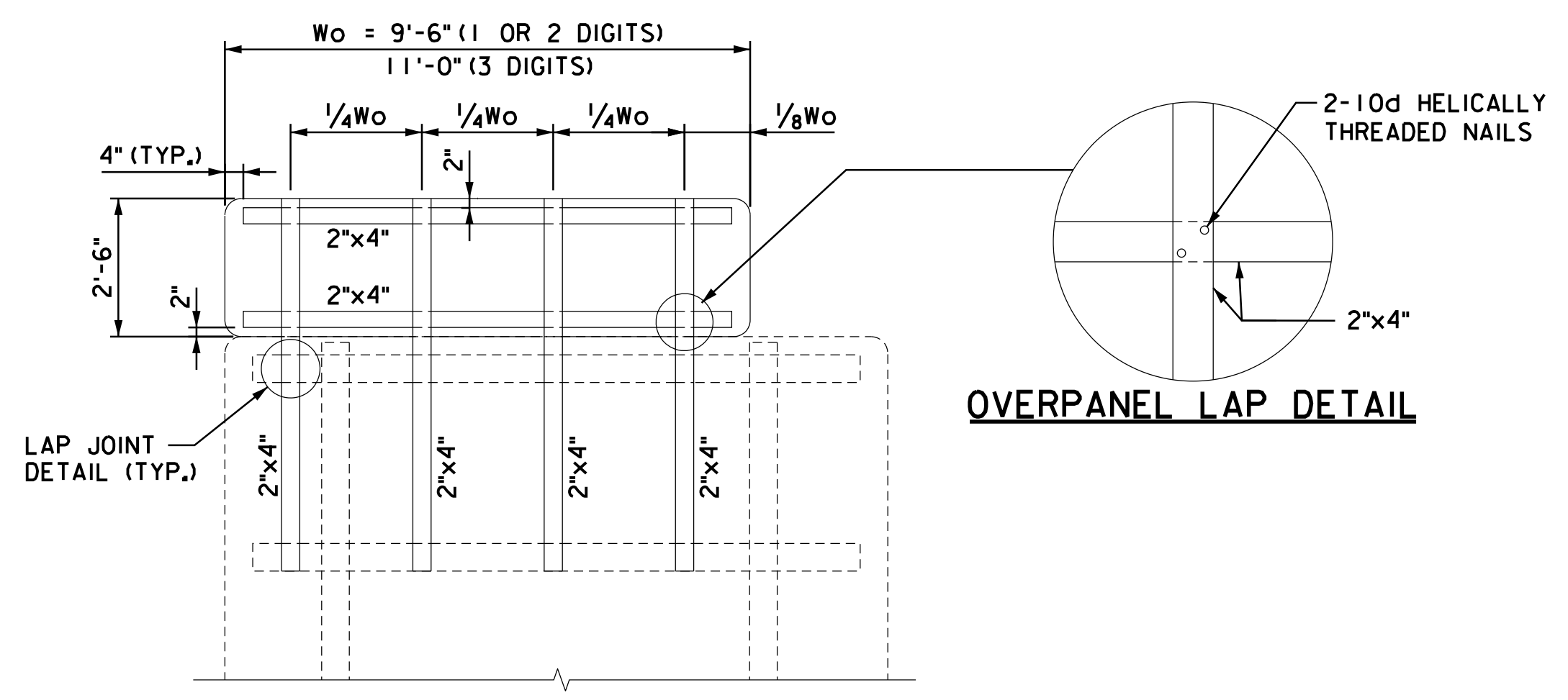


**DOUBLE POST SIGNS**  
N.T.S.



**TRIPLE POST SIGNS**  
N.T.S.

**GROUND MOUNTED SIGN STRUCTURES FOR DOUBLE AND TRIPLE POST SIGNS**  
**(REAR VIEW)**  
N.T.S.



**EXIT OVERPANEL SIGN**  
N.T.S.

**TABLE D - NON-BREAKAWAY DOUBLE POST SIGN STRUCTURES**

| H (FT) | W (FT) | POST SIZE | F (FT)    | L (FT)       | E (FT) |
|--------|--------|-----------|-----------|--------------|--------|
| 5      | 8      | 6" x 8"   | 7 TO 12   | 15.5 TO 20.5 | 4.5    |
| 5      | 10     | 6" x 8"   | 7 TO 12   | 16.0 TO 21.0 | 4.5    |
| 5      | 12     | 6" x 8"   | 7 TO 12   | 16.5 TO 21.5 | 5.0    |
| 6      | 6      | 6" x 6"   | 7 TO 9    | 16.5 TO 18.5 | 4.0    |
| 6      | 6      | 6" x 8"   | 9 TO 12   | 18.5 TO 21.5 | 4.0    |
| 6      | 8      | 6" x 8"   | 7 TO 12   | 17.0 TO 22.0 | 4.5    |
| 6      | 10     | 6" x 8"   | 7 TO 12   | 17.5 TO 22.5 | 5.0    |
| 7      | 7      | 6" x 8"   | 7 TO 12   | 18.0 TO 23.0 | 4.5    |
| 7      | 8      | 6" x 8"   | 7 TO 12   | 18.0 TO 23.0 | 4.5    |
| 7      | 10     | 6" x 8"   | 7 TO 10.5 | 18.5 TO 22.0 | 5.0    |
| 8      | 6      | 6" x 8"   | 7 TO 12   | 19.0 TO 24.0 | 4.5    |
| 8      | 8      | 6" x 8"   | 7 TO 11   | 19.0 TO 23.0 | 5.0    |
| 9      | 6      | 6" x 8"   | 7 TO 12   | 20.5 TO 25.5 | 5.0    |
| 9      | 8      | 6" x 8"   | 7 TO 9.5  | 20.5 TO 23.0 | 5.0    |

DO NOT USE THE BREAKAWAY HOLE DETAIL ON POSTS IN THIS TABLE

**TABLE F - NON-BREAKAWAY TRIPLE POST SIGN STRUCTURES**

| H (FT) | W (FT) | POST SIZE | F (FT)     | L (FT)       | E (FT) |
|--------|--------|-----------|------------|--------------|--------|
| 6      | 12     | 6" x 8"   | 7 TO 12    | 17.0 TO 22.0 | 4.5    |
| 7      | 10     | 6" x 8"   | 10.5 TO 12 | 22.0 TO 23.5 | 5.0    |
| 7      | 12     | 6" x 8"   | 7 TO 12    | 18.5 TO 23.5 | 5.0    |
| 8      | 10     | 6" x 8"   | 7 TO 12    | 19.0 TO 24.0 | 4.5    |
| 8      | 12     | 6" x 8"   | 7 TO 11    | 19.5 TO 23.5 | 5.0    |
| 9      | 10     | 6" x 8"   | 7 TO 11.5  | 20.5 TO 25.0 | 5.0    |

DO NOT USE THE BREAKAWAY HOLE DETAIL ON POSTS IN THIS TABLE

**TABLE E - NON-BREAKAWAY DOUBLE POST SIGN STRUCTURES WITH EXIT OVERPANEL**

| H (FT) | W (FT) | POST SIZE | F (FT)    | L (FT)       | E (FT) |
|--------|--------|-----------|-----------|--------------|--------|
| 4      | 10     | 6" x 8"   | 7 TO 10.5 | 15.5 TO 19.0 | 5.0    |
| 5      | 10     | 6" x 8"   | 7 TO 8.5  | 16.5 TO 18.0 | 5.0    |
| 5      | 12     | 6" x 8"   | 7 ONLY    | 16.5 ONLY    | 5.0    |
| 6      | 10     | 6" x 8"   | 7 TO 7.5  | 17.5 TO 18.0 | 5.0    |

DO NOT USE THE BREAKAWAY HOLE DETAIL ON POSTS IN THIS TABLE

**TABLE G - NON-BREAKAWAY TRIPLE POST SIGN STRUCTURES WITH EXIT OVERPANEL**

| H (FT) | W (FT) | POST SIZE | F (FT)      | L (FT)       | E (FT) |
|--------|--------|-----------|-------------|--------------|--------|
| 4      | 10     | 6" x 8"   | 10.5 TO 12  | 19.0 TO 20.5 | 5.0    |
| 5      | 10     | 6" x 8"   | 8.5 TO 12   | 18.0 TO 21.5 | 5.0    |
| 5      | 12     | 6" x 8"   | 7 TO 11     | 16.5 TO 20.5 | 5.0    |
| 6      | 10     | 6" x 8"   | 7.5 TO 11.5 | 18.0 TO 22.0 | 5.0    |
| 6      | 12     | 6" x 8"   | 7 TO 10     | 17.5 TO 20.5 | 5.0    |
| 7      | 10     | 6" x 8"   | 7 TO 10     | 18.5 TO 21.5 | 5.0    |
| 7      | 12     | 6" x 8"   | 7 TO 8.5    | 18.5 TO 20.0 | 5.0    |
| 8      | 10     | 6" x 8"   | 7 TO 9      | 19.5 TO 21.5 | 5.0    |
| 8      | 12     | 6" x 8"   | 7 ONLY      | 19.5 ONLY    | 5.0    |
| 9      | 10     | 6" x 8"   | 7 TO 7.5    | 20.5 TO 21.0 | 5.0    |

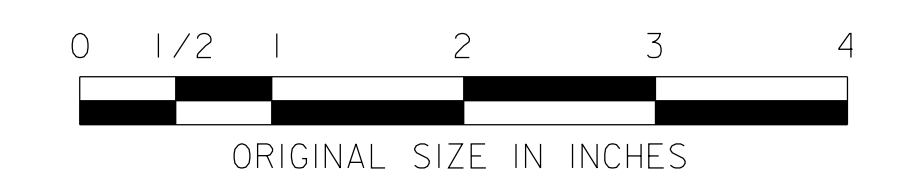
DO NOT USE THE BREAKAWAY HOLE DETAIL ON POSTS IN THIS TABLE

**NOTES:**

- SIGN STRUCTURES IN TABLES D, E, F, AND G SHALL REQUIRE ROADSIDE PROTECTION OR BE LOCATED OUTSIDE OF THE CLEAR ZONE.
- EXIT OVERPANEL SHALL BE LOCATED ON THE SAME SIDE AS THE EXIT RAMP.
- EXIT OVERPANEL SIGN SIZES SHALL CONFORM TO SIGN PANEL E1-5P, EXIT NUMBER (PLAQUE) AS SHOWN IN THE 2012 SUPPLEMENT TO THE 2004 FHWA STANDARD HIGHWAY SIGNS. EXIT OVERPANEL SHALL NOT BE WIDER THAN THE SIGN PANEL ON WHICH IT IS MOUNTED, EXIT OVERPANELS WIDER THAN 11'-0" SHALL BE MOUNTED ON TIMBER POLE SIGNS, SEE SHEET SI-47.

**REFERENCES:**

- FOR GENERAL NOTES, SEE SHEET SI-43.
- FOR LAP JOINT, BACKING STRIP, BUTT DETAIL, AND EMBEDMENT DETAILS SEE SHEET SI-46.
- FOR FOUNDATION DETAILS AND SECTIONS D-D AND F-F SEE SHEET SI-46.



NEW JERSEY TURNPIKE AUTHORITY

**NEW JERSEY TURNPIKE  
GARDEN STATE PARKWAY**

---

GROUND MOUNTED SIGNS  
NON-BREAKAWAY DOUBLE AND TRIPLE POST SIGNS

---

|   |                  |
|---|------------------|
| OFFICE OF THE CHIEF ENGINEER<br>NEW JERSEY TURNPIKE AUTHORITY | STANDARD DRAWING |
| WOODBRIDGE NEW JERSEY   | <b>SI-45</b>     |

|      |                  |      |
|------|------------------|------|
| 0    | ORIGINAL DRAWING | 6/16 |
| REV. | DESCRIPTION      | DATE |

PLOT BY: \_\_\_\_\_  
PLOT DATE: \_\_\_\_\_  
CADD FILE: \_\_\_\_\_