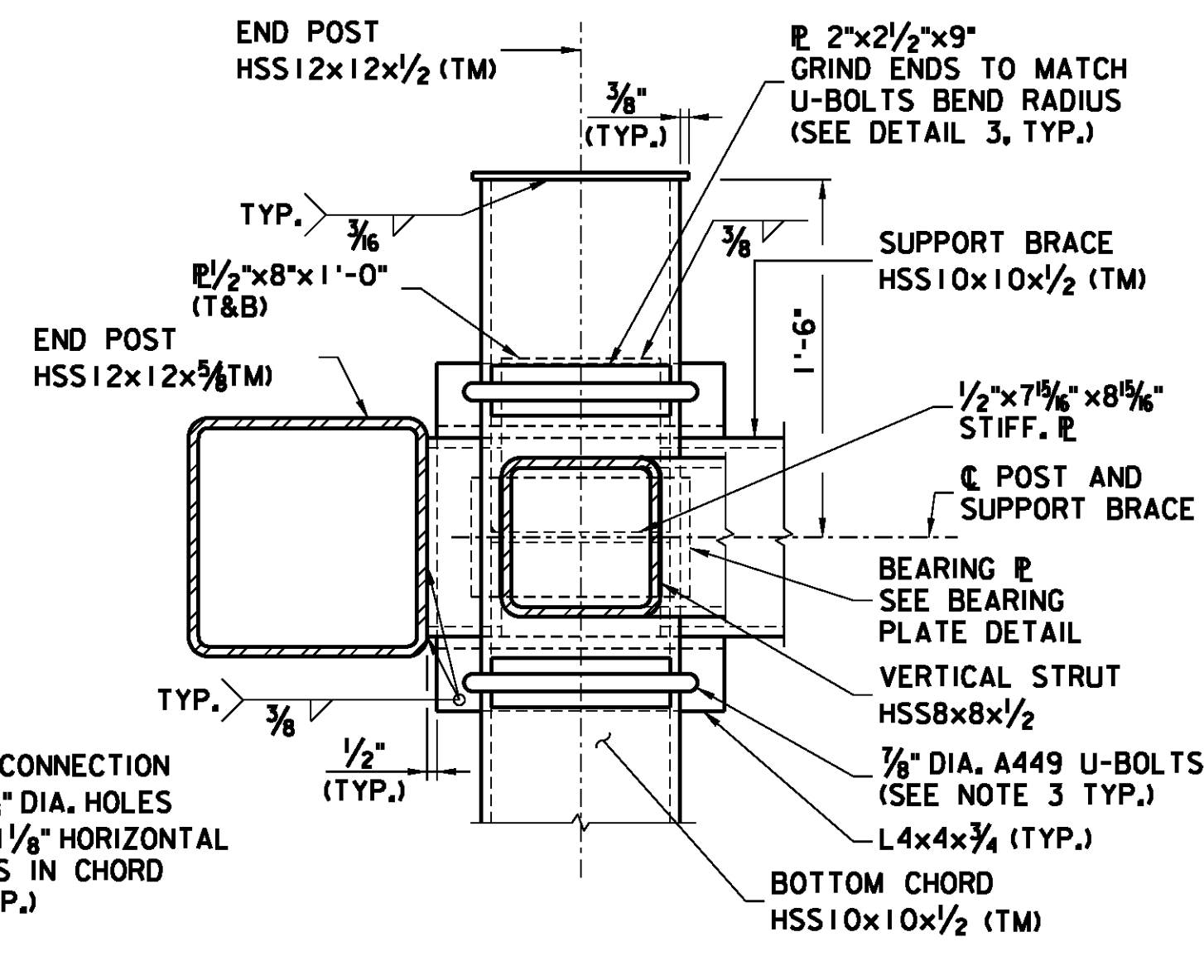
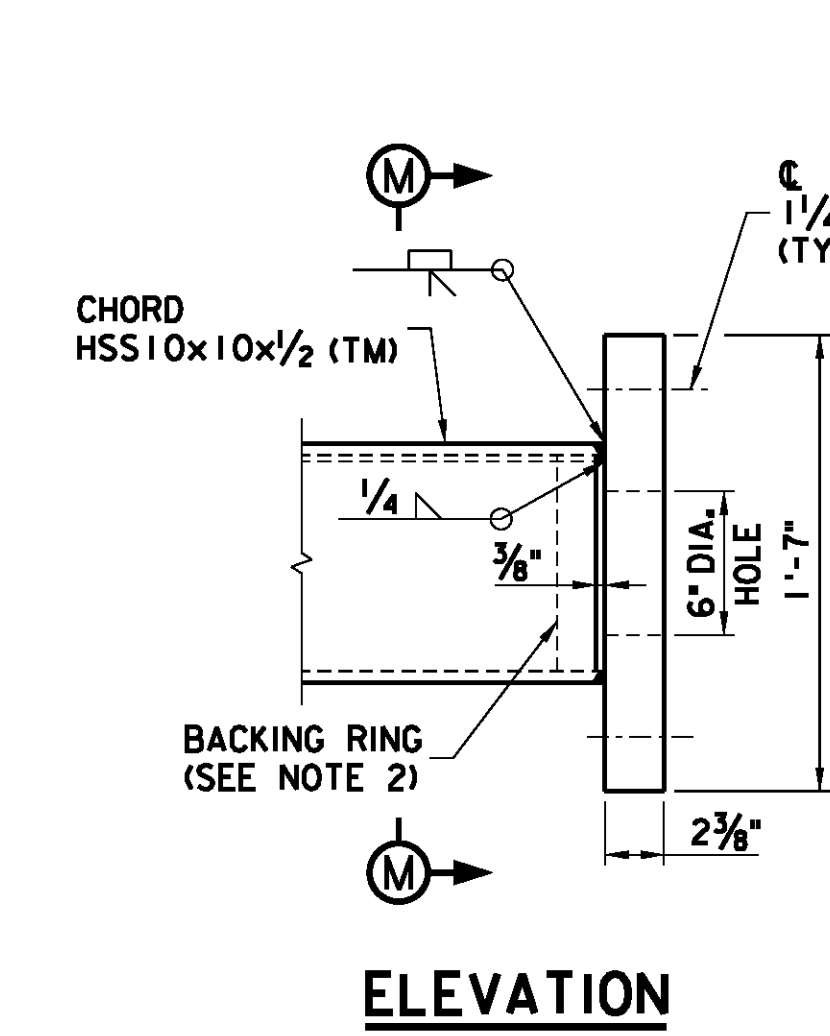


SECTION G-G
1 1/2" = 1'-0"

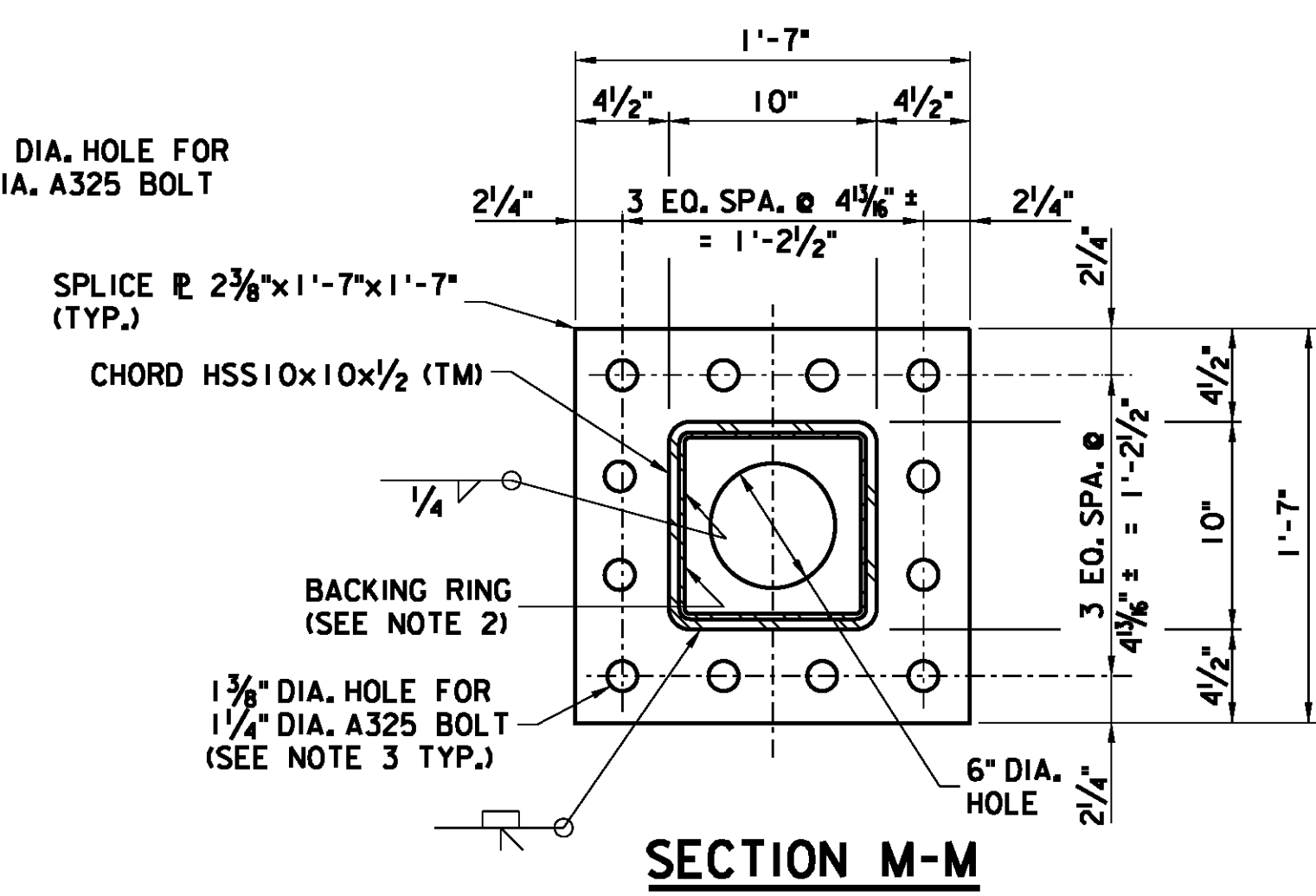


SECTION H-H
1 1/2" = 1'-0"

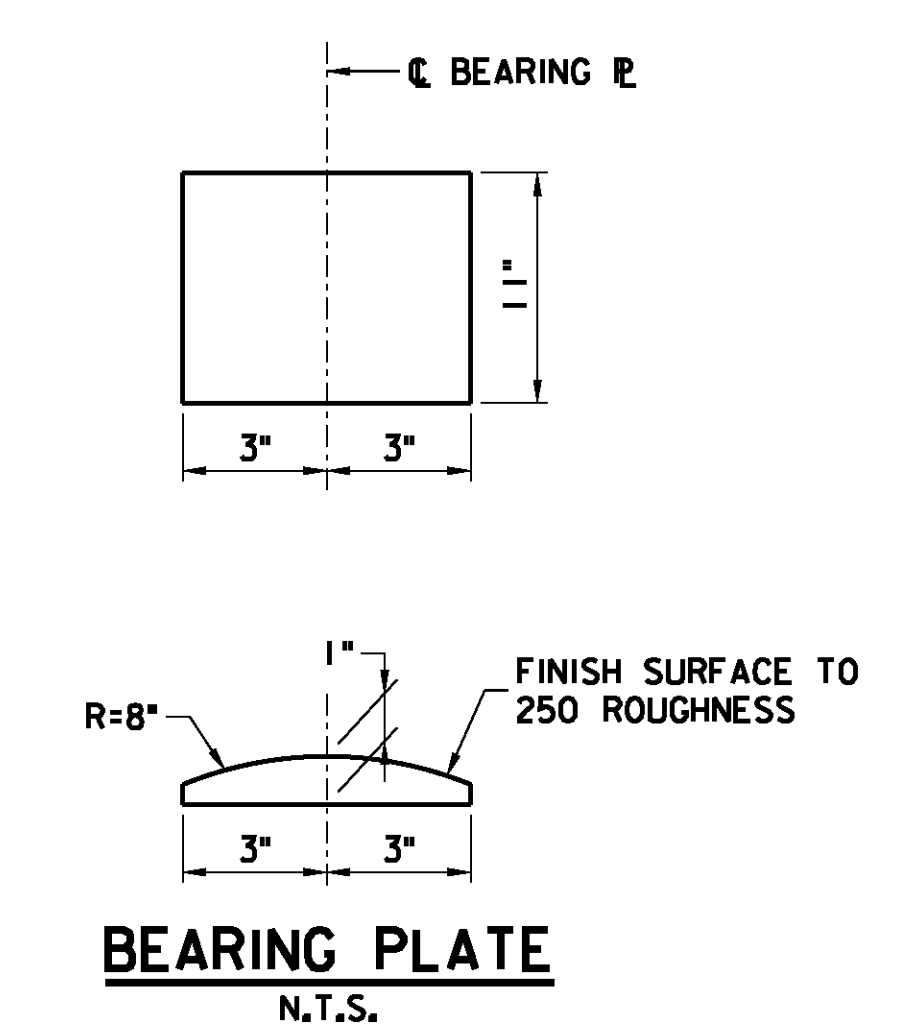


ELEVATION

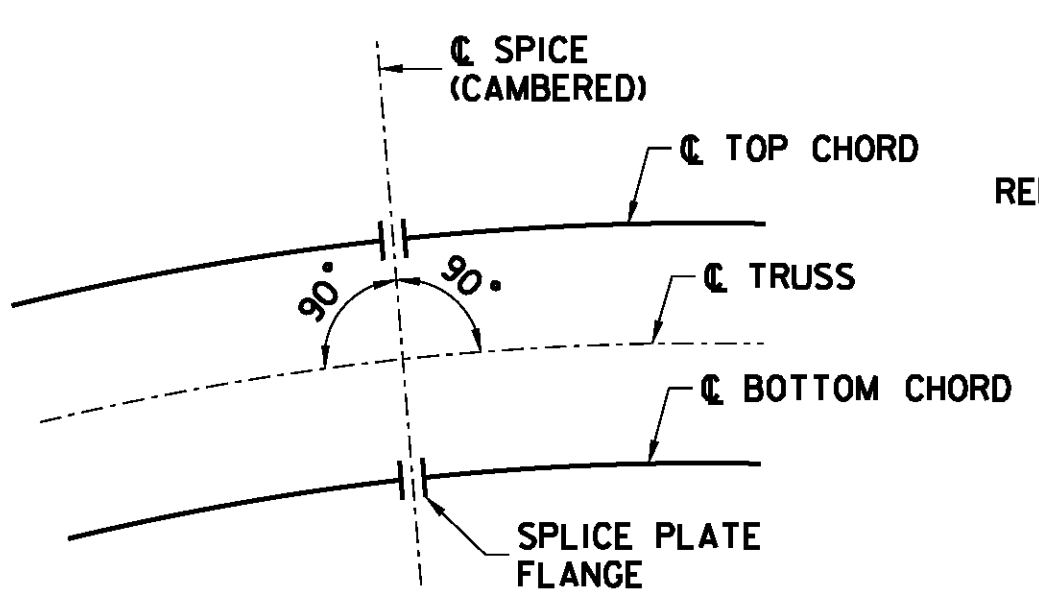
CHORD SPLICE DETAIL
1 1/2" = 1'-0"



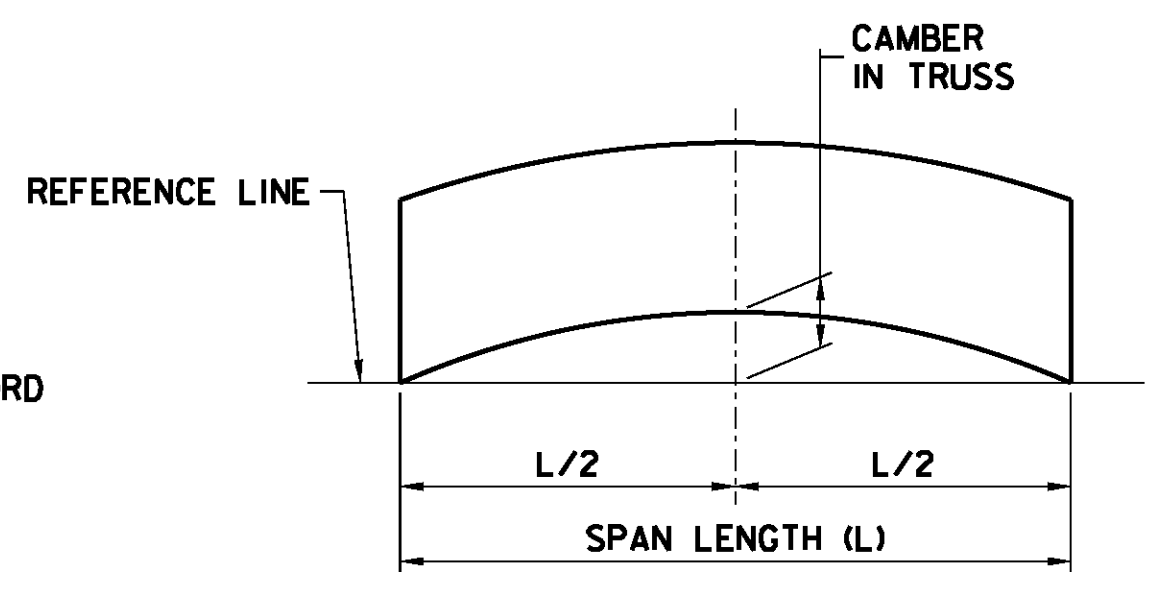
SECTION M-M



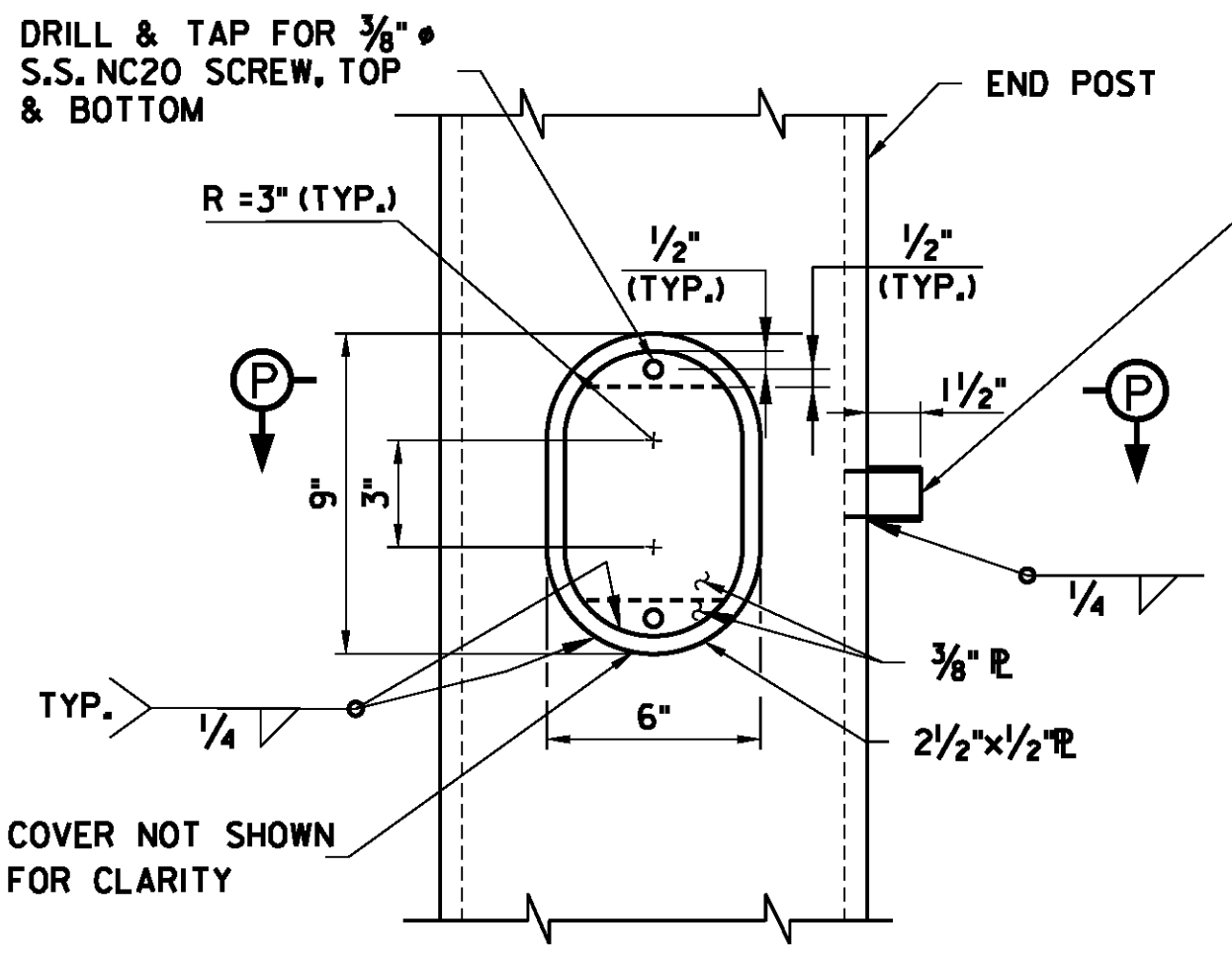
BEARING PLATE
N.T.S.



CAMBER DETAIL
N.T.S.

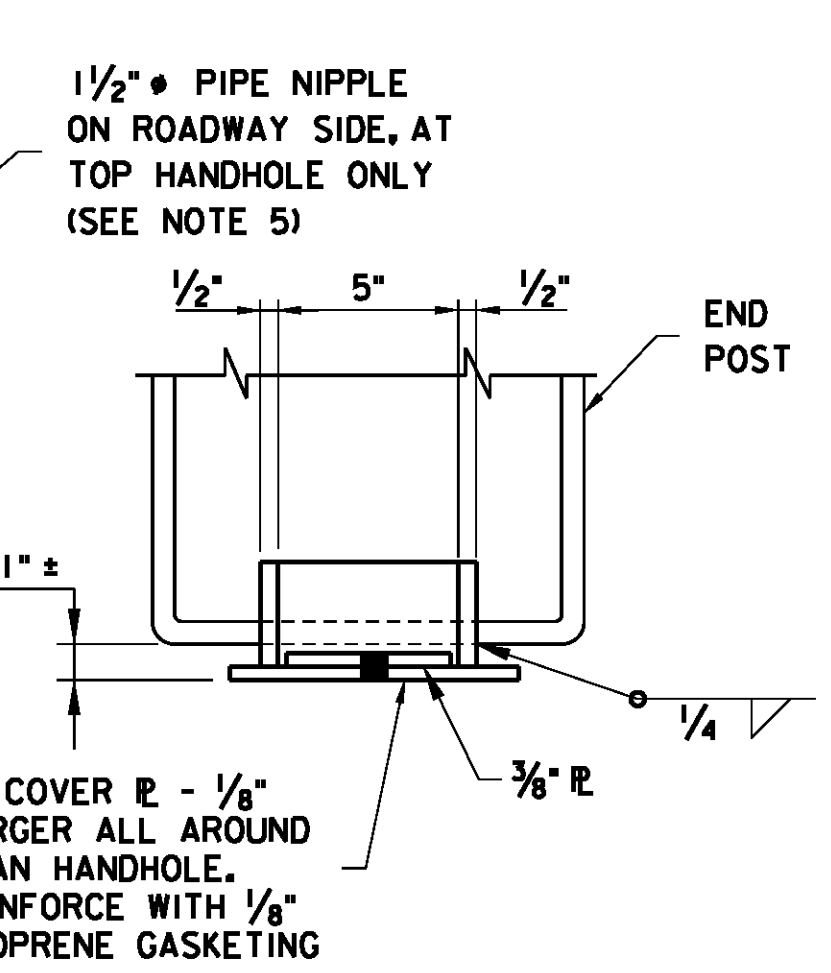


CAMBER DIAGRAM
N.T.S.

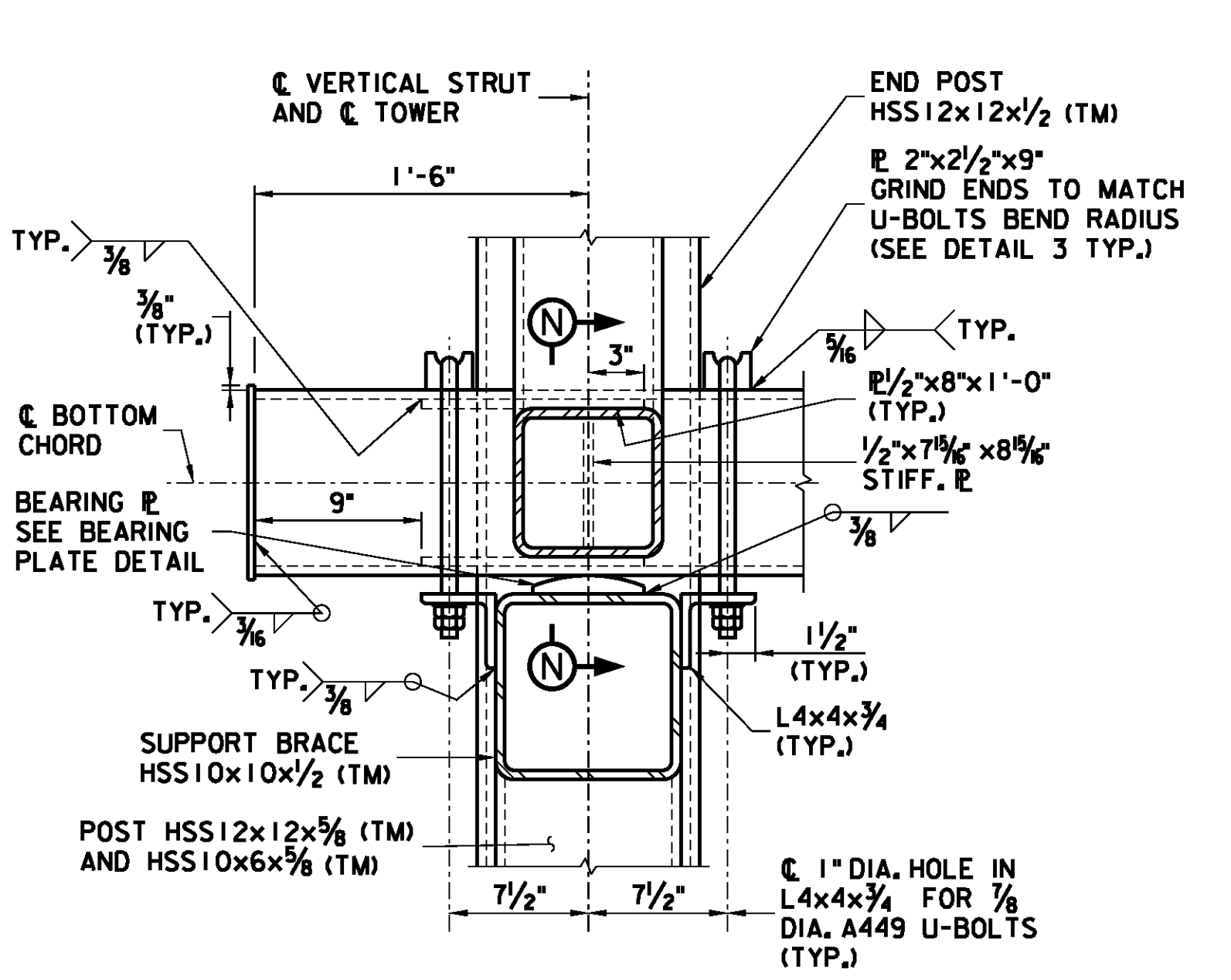


ELEVATION

TYPICAL REINFORCED HANDHOLE AND PIPE NIPPLE DETAIL
3" = 1'-0"



SECTION P-P



SECTION J-J
1 1/2" = 1'-0"

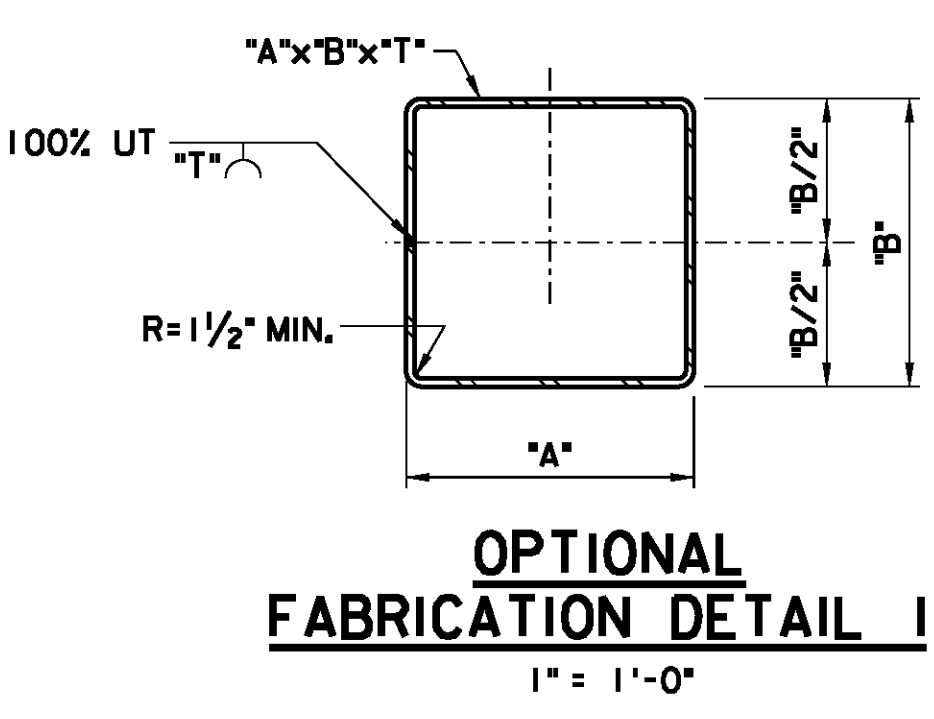
CAMBER NOTE

CAMBER SHALL BE OBTAINED BY INCREASING THE LENGTHS OF THE TOP CHORDS AND DECREASING THE LENGTH OF THE BOTTOM CHORD AS SHOWN. CHORD SPLICE FLANGES SHALL BE SKEWED TO THE ANGLE BEFORE BEING WELDED TO THE CHORDS. THE REQUIRED CAMBER SHALL HAVE A RESIDUAL CAMBER OF APPROXIMATELY 1" FOR FULL LOAD IN ACCORDANCE WITH SECTION 406.04 OF THE NEW JERSEY TURNPIKE AUTHORITY STANDARD SPECIFICATIONS, 6TH EDITION 2004. NO FORCE SHALL BE APPLIED IN PROVIDING CAMBER. AN ALTERNATE METHOD OF OBTAINING CAMBER MAY BE USED AS APPROVED BY THE ENGINEER.

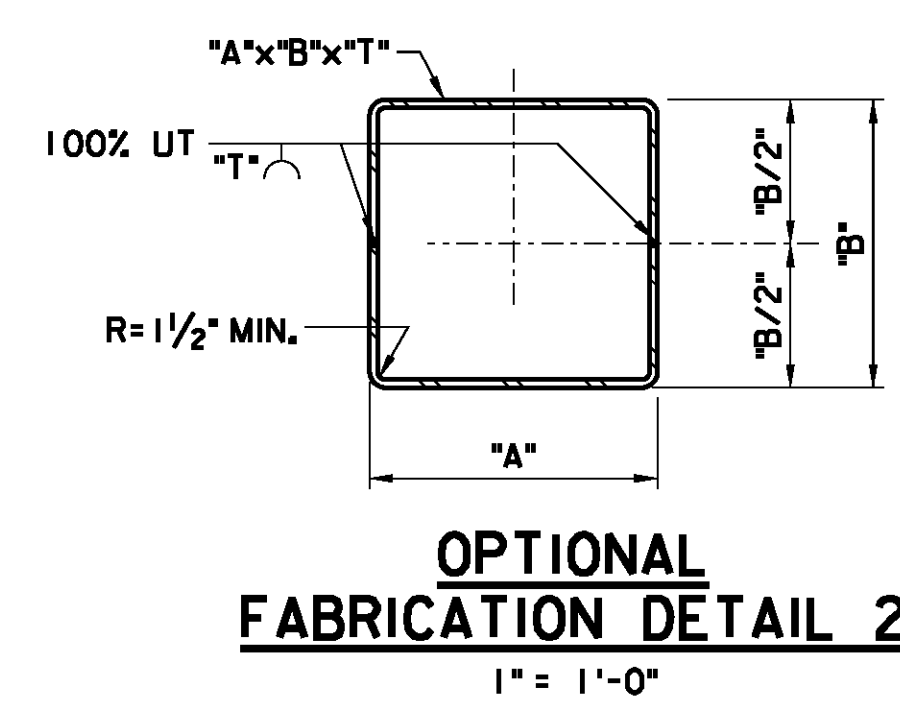
SIGN STRUCTURE SPAN LENGTH (L)	CAMBER IN TRUSS (IN)
140' < TO 156' MAX.	4 7/8
130' < TO ≤ 140'	3 1/2
120' < TO ≤ 130'	2 7/8
110' < TO ≤ 120'	2 3/8
100' < TO ≤ 110'	2
90' < TO ≤ 100'	1 3/4

NOTES:

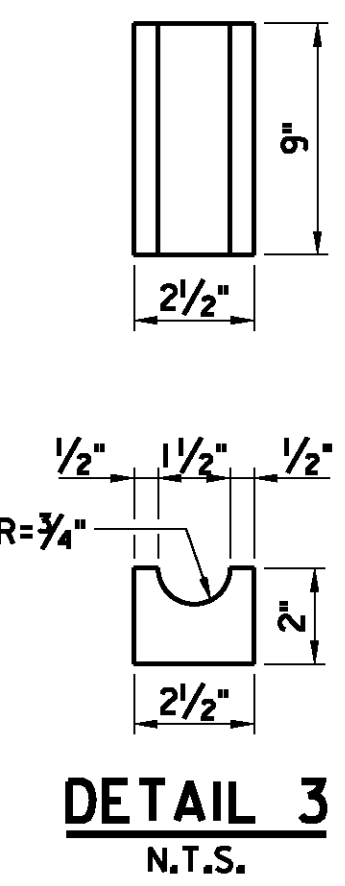
- FOR GENERAL NOTES AND ADDITIONAL NOTES, SEE STANDARD DRAWING SI-31.
- FULL-PENETRATION WELDED CHORD TO FLANGE PLATE CONNECTION WITH THE BACKING RING ATTACHED TO THE PLATE WITH A CONTINUOUS FILLET WELD AROUND THE INTERIOR FACE OF THE BACKING RING. BACKING RINGS SHALL BE 3/8"x2".
- ALL SPLICE BOLTS, SHALL BE ASTM A325, TYPE 3 WHICH IS TO HAVE THE SAME CORROSION RESISTANT AND WEATHERING CHARACTERISTICS AS THE CONNECTED MATERIAL OR SHALL BE HOT-DIP GALVANIZED. CONNECTION BOLTS AND U-BOLTS SHALL BE ASTM A449 AND SHALL BE HOT-DIP GALVANIZED. ALL NUTS AND WASHERS SHALL ALSO BE HOT-DIP GALVANIZED. HOT-DIP GALVANIZING SHALL BE AS PER ASTM A153, CLASS C.
- ALL MEMBERS MARKED (TM) ARE MAIN LOAD CARRYING MEMBERS SUBJECT TO TENSILE STRESS AND SHALL MEET SUPPLEMENTARY REQUIREMENTS FOR TOUGHNESS.
- 1 1/2" DIA. STANDARD PIPE NIPPLE SHALL BE OF APPROVED MATERIAL AND BE COMPATIBLE WITH THE MATERIAL TO WHICH IT IS WELDED. INSTALL FULLY TIGHTENED CAP ON THE NIPPLE UPON INSTALLATION.



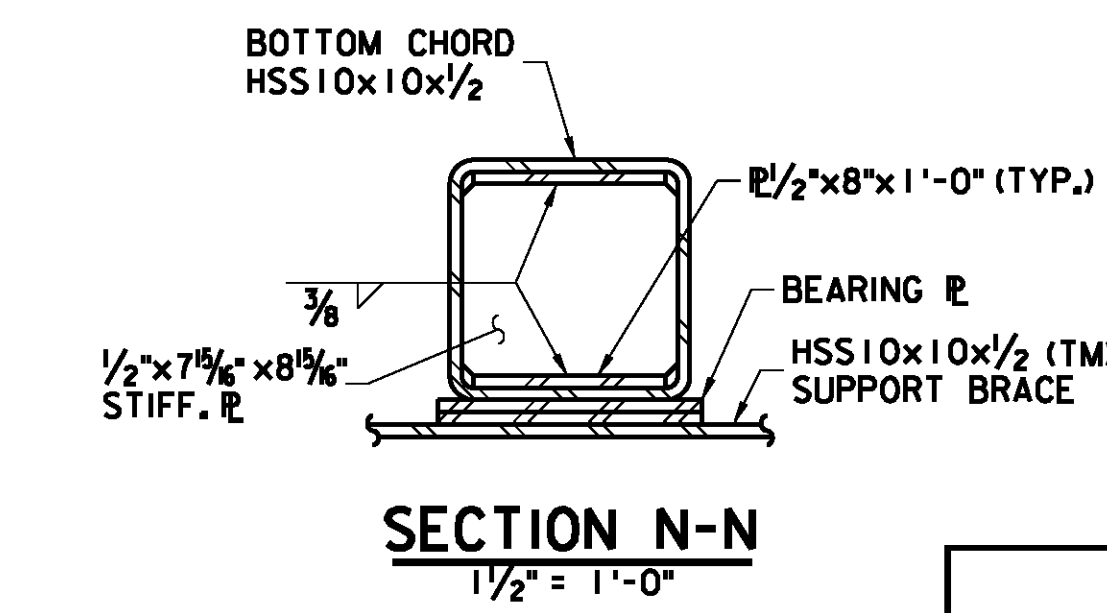
OPTIONAL FABRICATION DETAIL 1
1" = 1'-0"



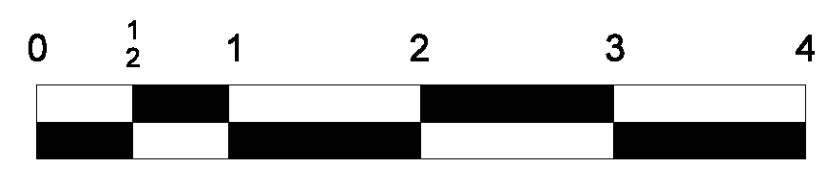
OPTIONAL FABRICATION DETAIL 2
1" = 1'-0"



DETAIL 3
N.T.S.



SECTION N-N
1 1/2" = 1'-0"



ORIGINAL SIZE IN INCHES

APP.	NO.	DATE	REVISION
	1	09/12	ADDED ELECTRICAL PROVISIONS
	0	10/10	ORIGINAL DRAWING

NEW JERSEY TURNPIKE AUTHORITY
GARDEN STATE PARKWAY
VIERENDEEL SPAN TYPE SIGN STRUCTURE
(SPANS FROM 91 TO 156 FEET)
SECTIONS AND DETAILS - 2

OFFICE OF THE CHIEF ENGINEER
NEW JERSEY TURNPIKE AUTHORITY
WOODBRIDGE NEW JERSEY
2010 STANDARD
DRAWING SI-33

FILE NAME: SP1E1.S

CONTRACT NO.

SHEET NO. OF