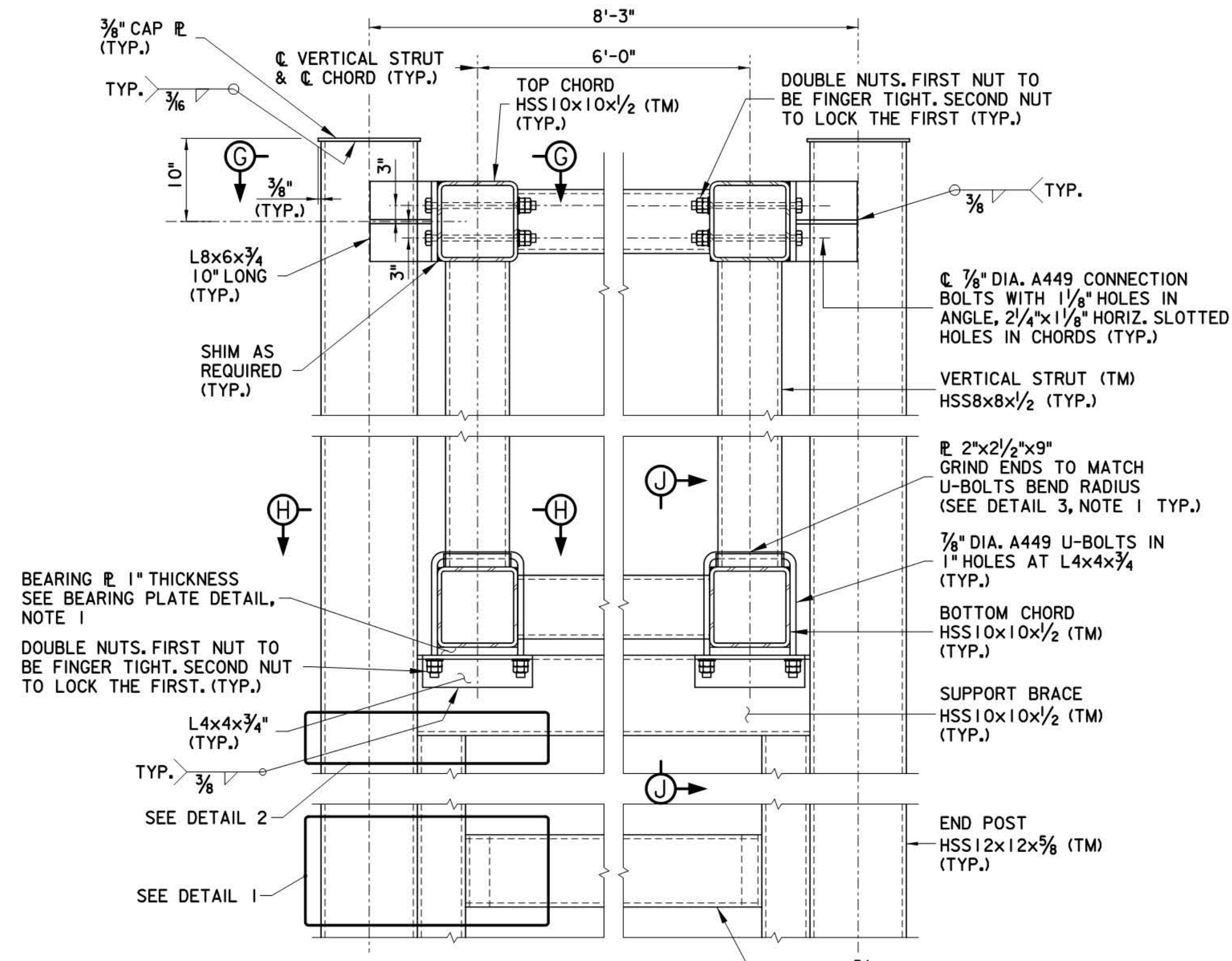
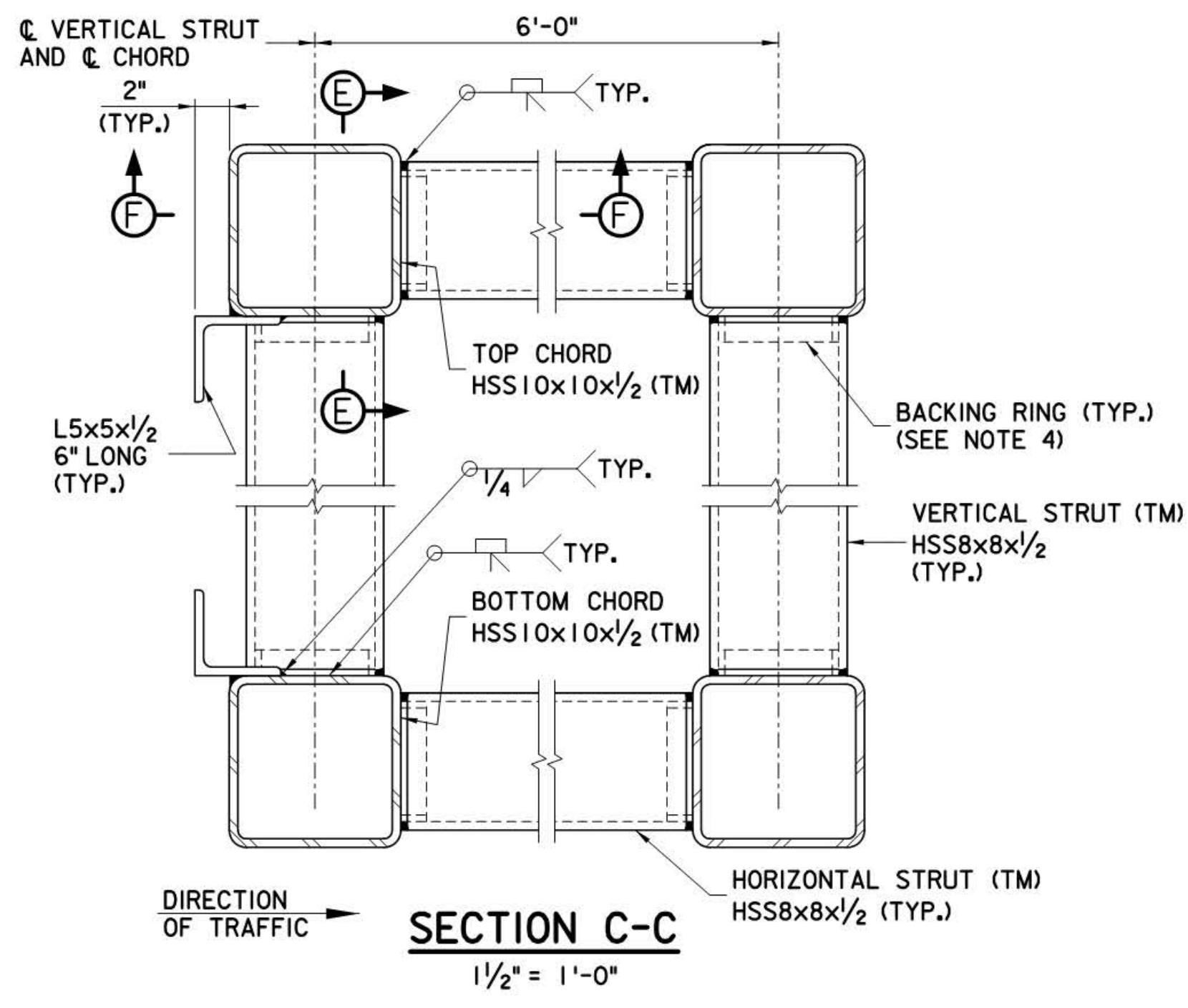


SECTION A-A
N.T.S.



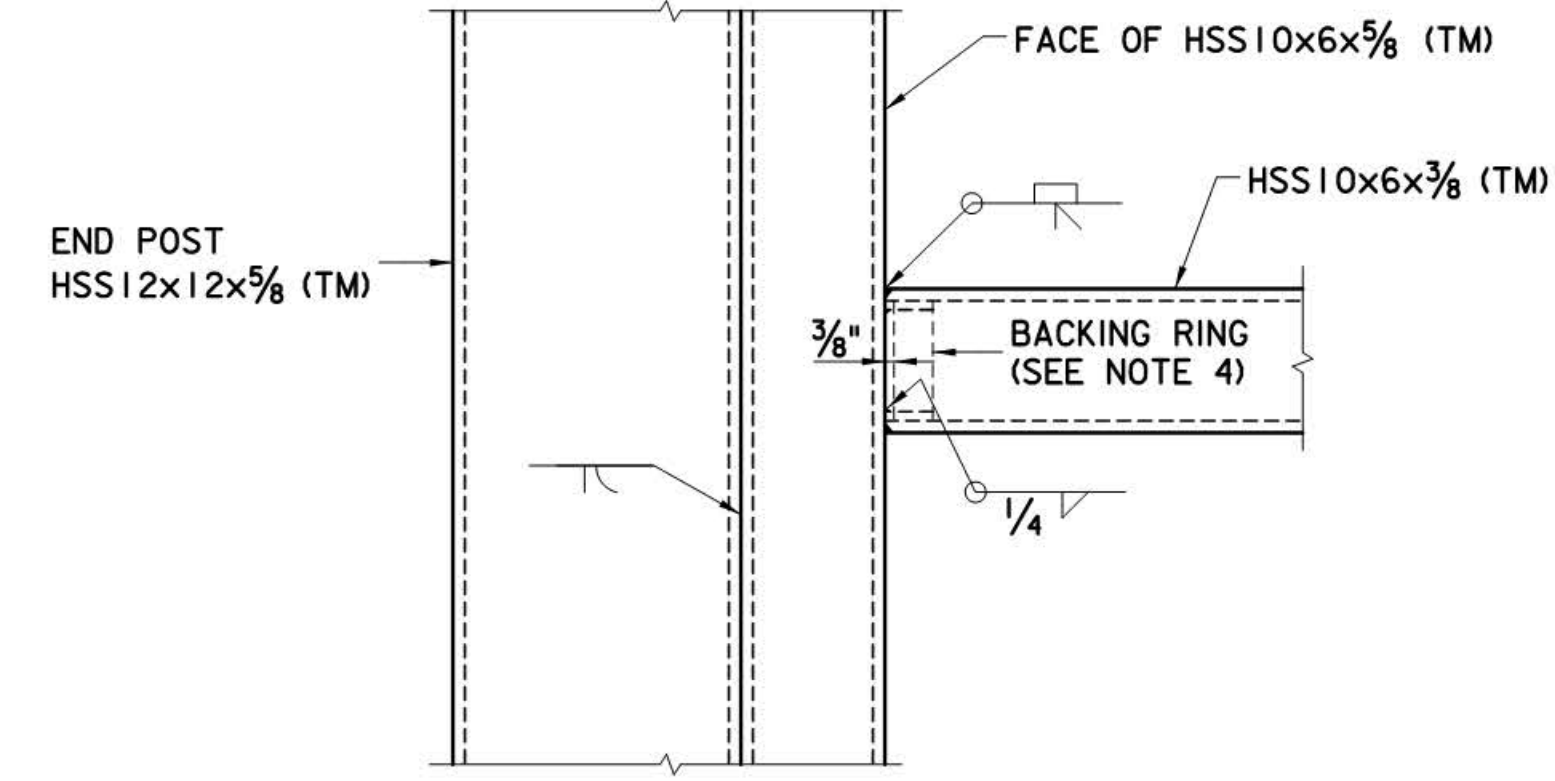
SECTION B-B
1" = 1'-0"



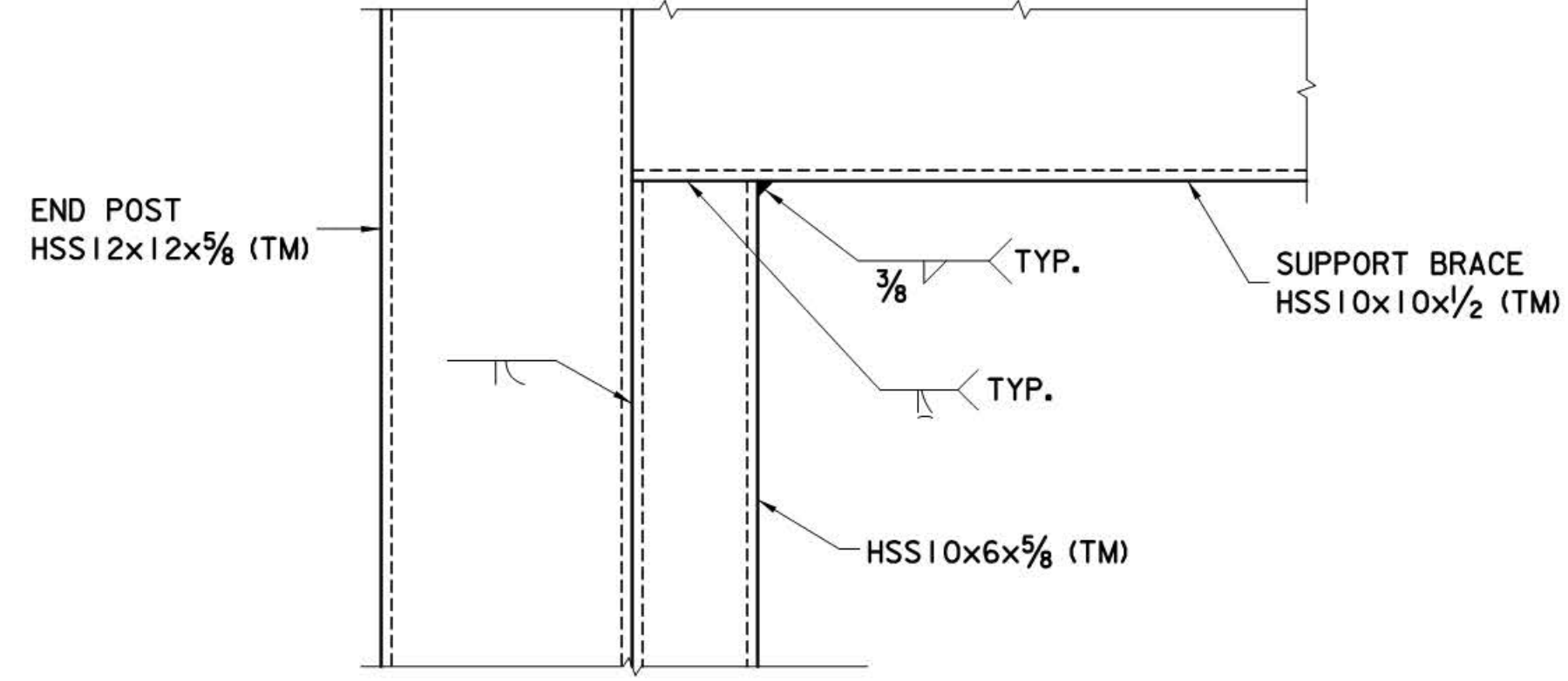
SECTION C-C
1 1/2" = 1'-0"

NOTES:

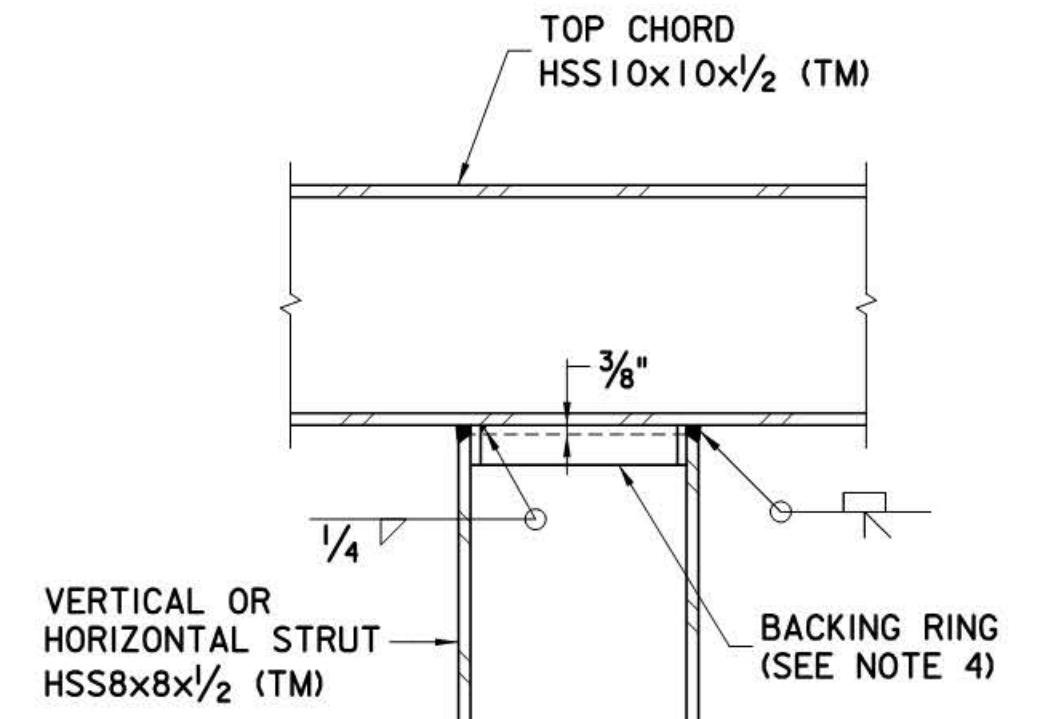
- FOR SECTION K-K, SEE STANDARD DRAWING SI-34. FOR SECTIONS G-G, H-H AND J-J, BEARING PLATE DETAIL, DETAIL 3 AND OTHER DETAILS NOT SHOWN, SEE STANDARD DRAWING SI-33.
- ALL MATERIALS AND FABRICATION SHALL CONFORM TO THE 2009 EDITION OF THE AASHTO "STANDARD SPECIFICATIONS FOR STRUCTURAL SUPPORTS FOR HIGHWAY SIGNS, LUMINAIRES AND TRAFFIC SIGNALS", 5TH EDITION WITH ALL CURRENT INTERIMS.
- ALL SPLICE BOLTS, SHALL BE ASTM A325, TYPE 3 WHICH IS TO HAVE THE SAME CORROSION RESISTANT AND WEATHERING CHARACTERISTICS AS THE CONNECTED MATERIAL OR SHALL BE HOT-DIP GALVANIZED. CONNECTION BOLTS AND U-BOLTS SHALL BE ASTM A449 AND SHALL BE HOT-DIP GALVANIZED. ALL NUTS AND WASHERS SHALL ALSO BE HOT-DIP GALVANIZED. HOT-DIP GALVANIZING SHALL BE AS PER ASTM A153, CLASS C.
- FULL-PENETRATION WELDED STRUT TO CHORD CONNECTIONS AND POSTS TO BASE PLATE CONNECTIONS HAVE THE BACKING RINGS ATTACHED TO THE CHORD OR PLATE WITH A CONTINUOUS FILLET WELD AROUND THE INTERIOR FACE OF THE BACKING RING. THE BACKING RINGS SHALL BE 3/8"x2".
- STRUCTURAL STEEL PLATES AND SHAPES SHALL CONFORM TO THE REQUIREMENTS OF ASTM A709, GRADE 50W UNLESS OTHERWISE NOTED.
- ALL WEEP HOLES SHALL BE COVERED WITH GALV. OR S.S. WIRE MESH SCREENS.
- 3" CONDUITS EXITS PEDESTAL 24" BELOW GRADE AND CONNECTS TO AN ADJACENT JUNCTION BOX, SEE STANDARD DRAWING SI-42 FOR JUNCTION BOX DETAILS. CONDUITS SHALL BE INSTALLED WITH BUSHINGS AND PLUGGED TO PROTECT THE THREADS. THE 5" DIA. HOLE IN BASE PLATE WITH CONDUIT SHALL ONLY BE LOCATED IN THE DOWNSTREAM TOWER ON THE RIGHT SHOULDER SIDE(S); WHERE THE TOWER IS ADJACENT TO LEFT LANE TRAFFIC, REPLACE 5" DIA. HOLE IN BASE PLATE WITH 2" DIA. WEEP HOLE.



DETAIL 1
1 1/2" = 1'-0"



DETAIL 2
1 1/2" = 1'-0"



SECTION E-E
(SECTION F-F SIMILAR ROTATED 90°)
1 1/2" = 1'-0"



APP.	NO.	DATE	REVISION
	2	10/14	REVISED BASE PLATE HOLE DIAMETER
	1	09/12	ADDED ELECTRICAL PROVISIONS
	0	10/10	ORIGINAL DRAWING

NEW JERSEY TURNPIKE AUTHORITY

GARDEN STATE PARKWAY

VIERENDEEL SPAN TYPE SIGN STRUCTURE
(SPANS FROM 91 TO 156 FEET)
SECTIONS AND DETAILS - 1

OFFICE OF THE CHIEF ENGINEER NEW JERSEY TURNPIKE AUTHORITY	2010 STANDARD
WOODBRIDGE NEW JERSEY	DRAWING SI-32

FILE NAME: SFILE15