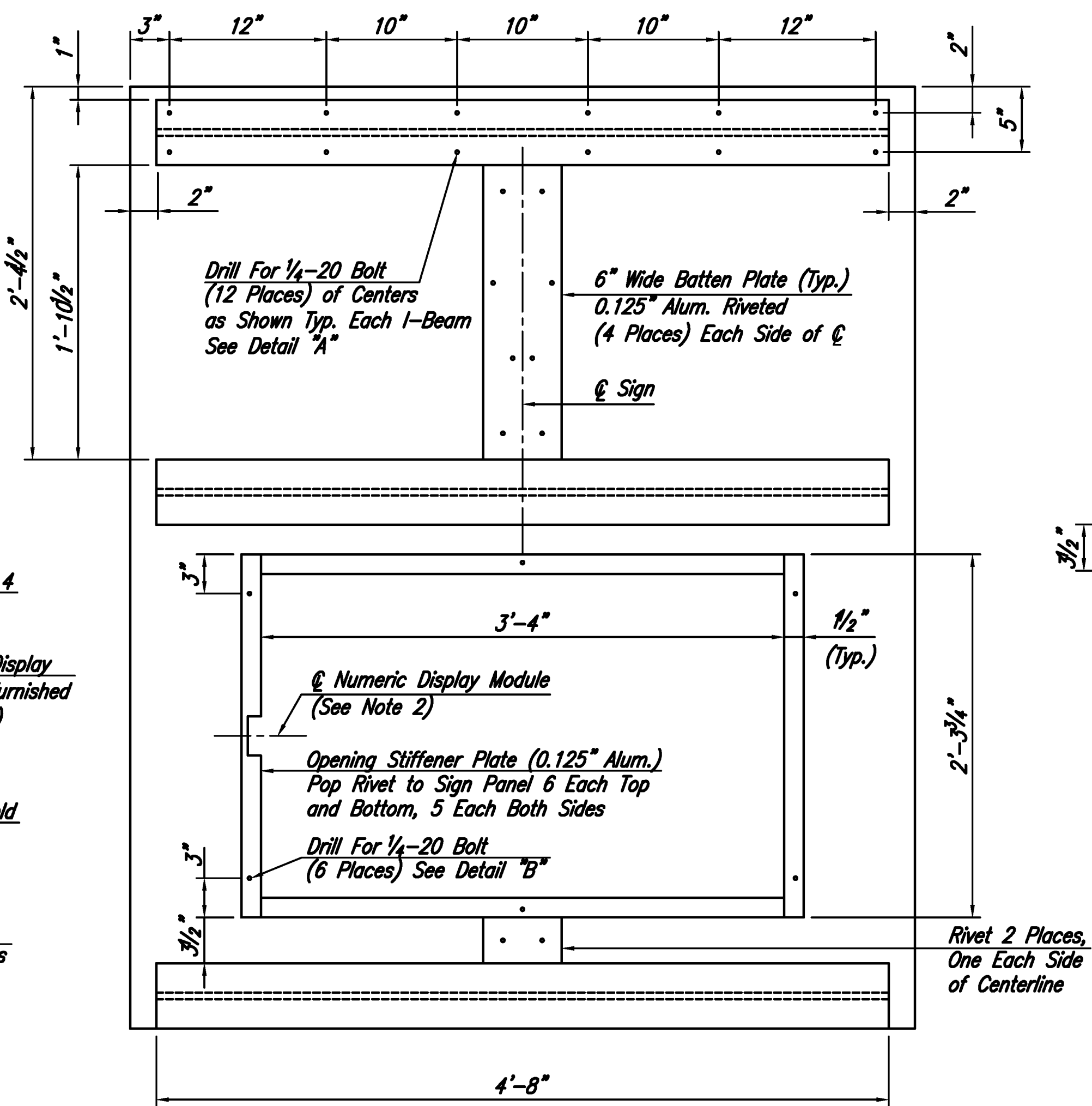


FRONT VIEW

See Note 4 (Typ.)
 Numeric Display Module (Furnished by Others)
 Snow Shield
 3" Radius All Borders

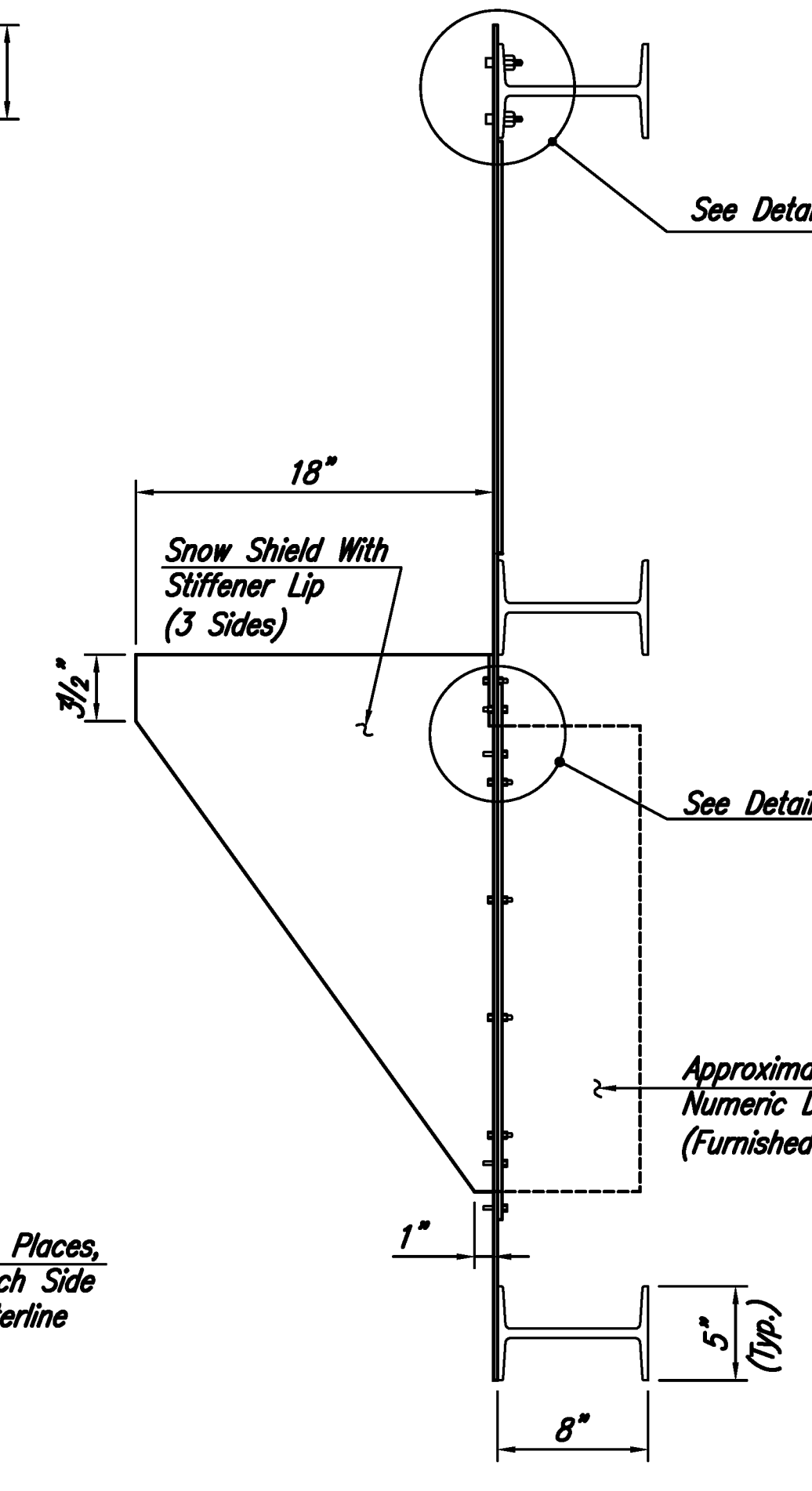


REAR VIEW

Drill For 1/4-20 Bolt (12 Places) of Centers as Shown Typ. Each I-Beam See Detail "A"
 6" Wide Batten Plate (Typ.) 0.125" Alum. Riveted (4 Places) Each Side of I-Beam
 I-Beam
 Sign

Opening Stiffener Plate (0.125" Alum.) Pop Rivet to Sign Panel 6 Each Top and Bottom, 5 Each Both Sides
 Drill For 1/4-20 Bolt (6 Places) See Detail "B"
 Numeric Display Module (See Note 2)
 1/2" (Typ.)

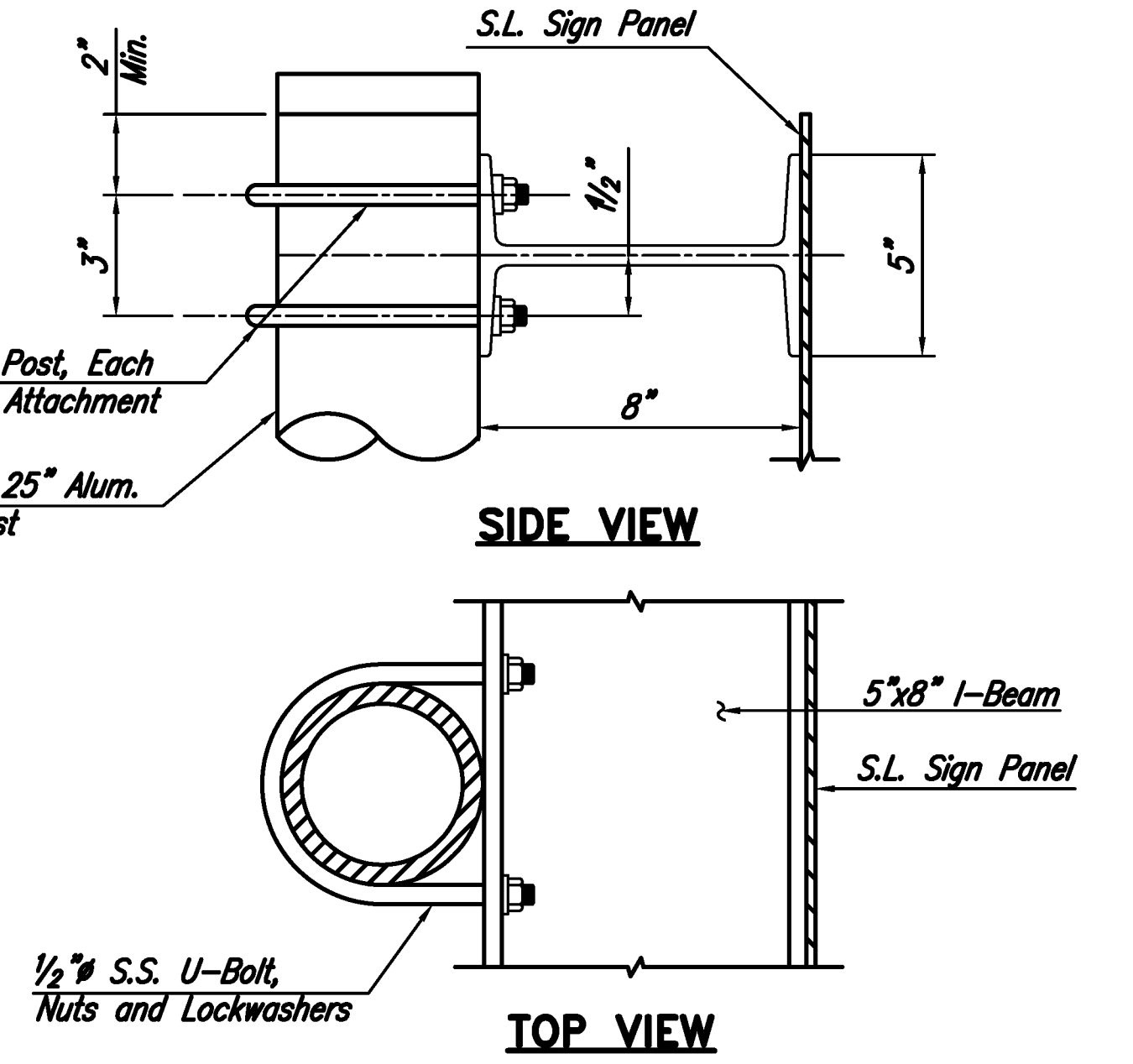
Rivet 2 Places, One Each Side of Centerline



SIDE VIEW

See Detail "A"

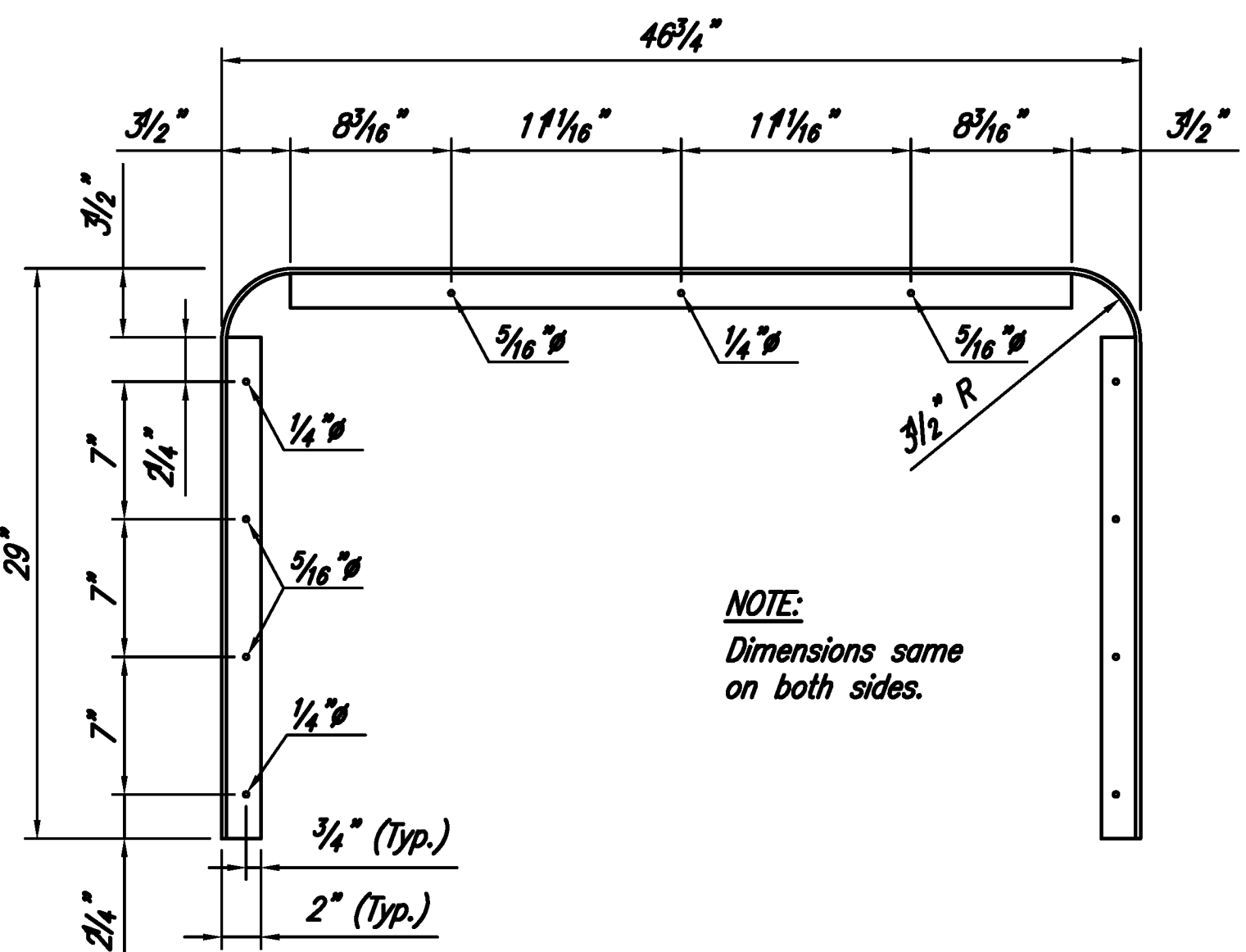
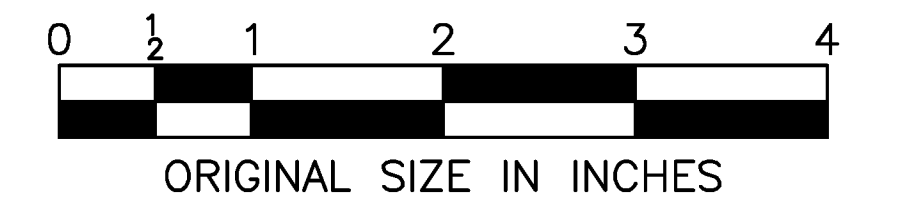
See Detail "B"



SL SIGN ATTACHMENT DETAIL FOR GROUND MOUNTED LOCATIONS

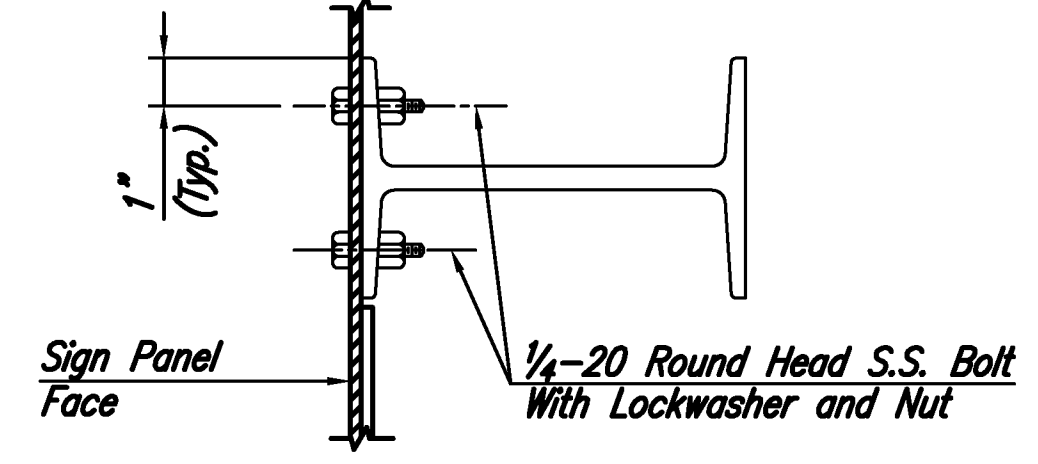
NOTES:

1. The speed limit sign panel shall be White High Intensity Scotch-Lite on 0.125" aluminum panel. Legend and border shall be Black Scotch-Cal.
2. The sign panel opening shown is based upon the approximate size of the numeric display module. It shall be the Contractor's responsibility to obtain a sample of the actual numeric display module (to be furnished by the Authority) prior to fabrication of the sign panels.
3. Snow shield shall be 0.125" thick aluminum with flat black finish.
4. Snow shield may be modified as approved by the Engineer to avoid interference with the numeric module assembly.
5. Sign support structures shall conform to Section 406.

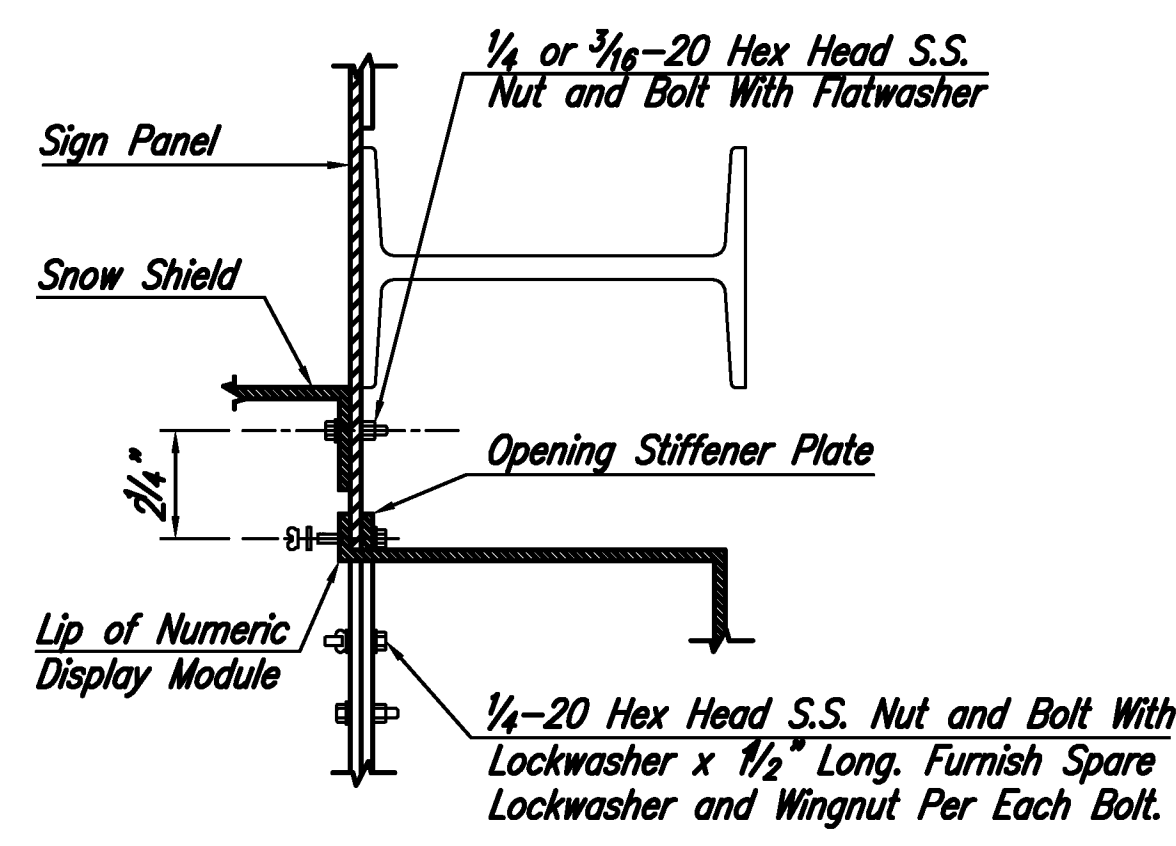


FRONT VIEW - SNOW SHIELD

NEW SPEED LIMIT PANEL



DETAIL "A"



DETAIL "B"

APP. NO.		04/09	DATE	ORIGINAL DRAWING	REVISION
CONTRACT NO.		SHEET NO.		OF	

**NEW JERSEY TURNPIKE AUTHORITY
 NEW JERSEY TURNPIKE**

**SPEED LIMIT SIGN
 INSTALLATION DETAILS**

OFFICE OF THE CHIEF ENGINEER
 WOODBRIDGE, NEW JERSEY

2009 STANDARD DRAWING
SI-23