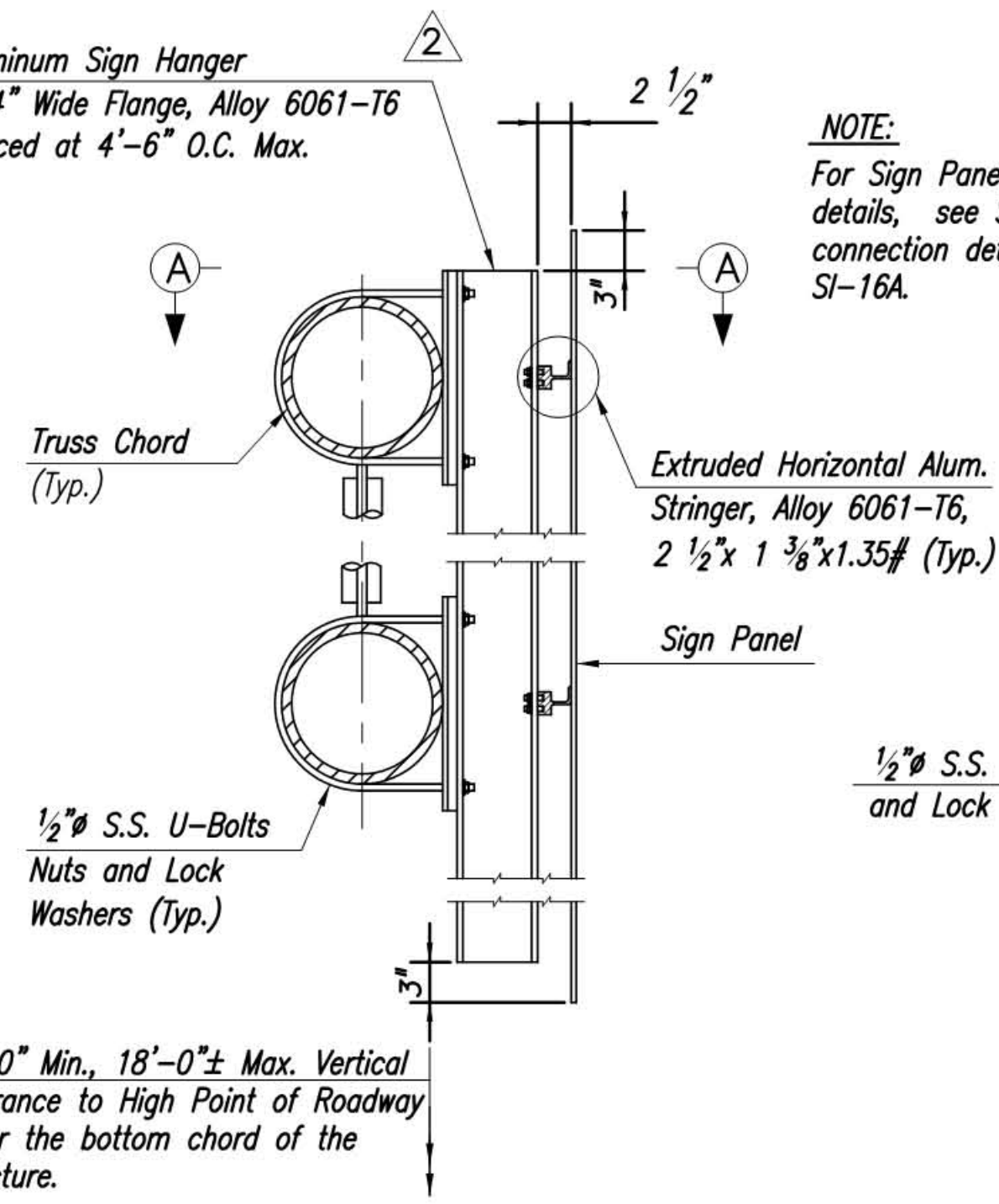


Aluminum Sign Hanger
6"x4" Wide Flange, Alloy 6061-T6
Spaced at 4'-6" O.C. Max.

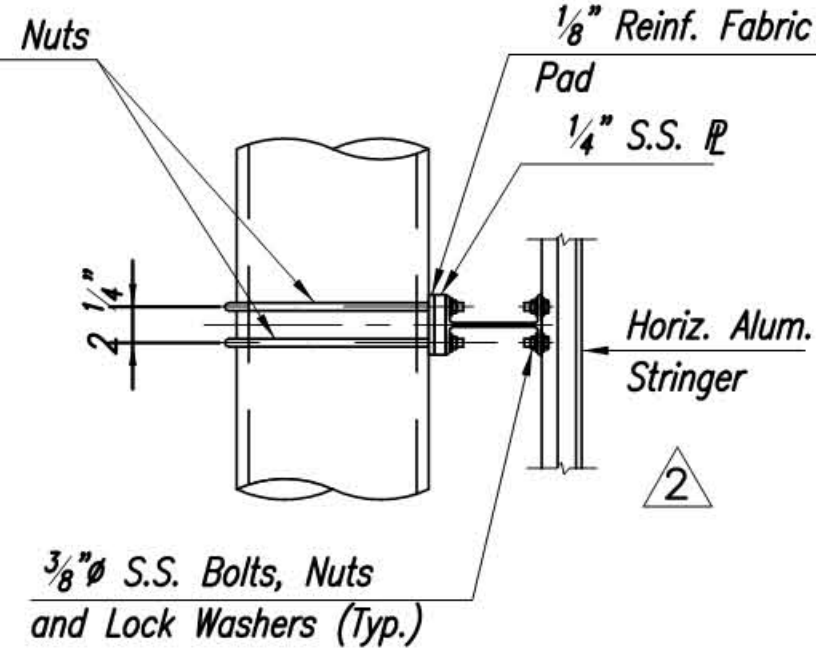


SIDE ELEVATION

NOTE:
For Sign Panel to stringer connection details, see SI-13. For stringer to hanger connection details, see Section C-C on SI-16A.

Extruded Horizontal Alum. Stringer, Alloy 6061-T6, 2 1/2" x 1 3/8" x 1.35# (Typ.)

1/2" S.S. U-Bolts, Nuts and Lock Washers

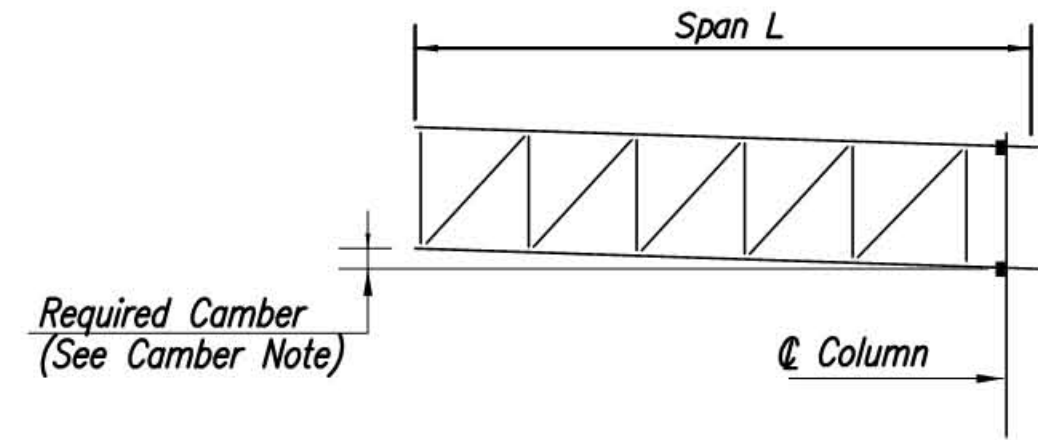


SECTION A-A

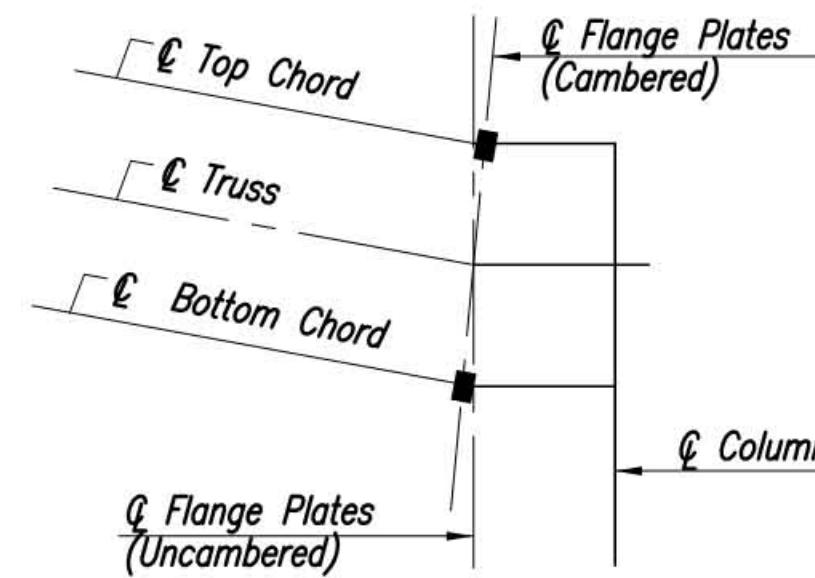
17'-0" Min., 18'-0" ± Max. Vertical Clearance to High Point of Roadway under the bottom chord of the structure.

ERECTION DETAIL - BUTTERFLY STRUCTURE

1" = 1'-0"



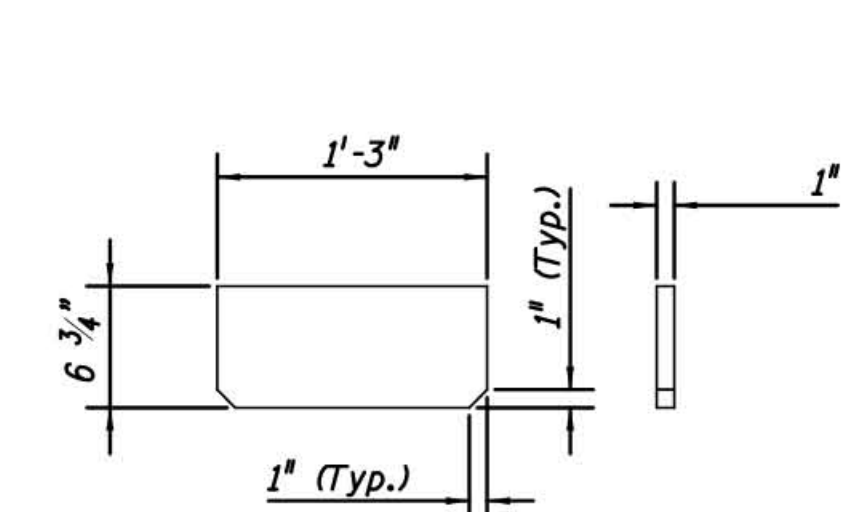
CAMBER DIAGRAM
N.T.S.



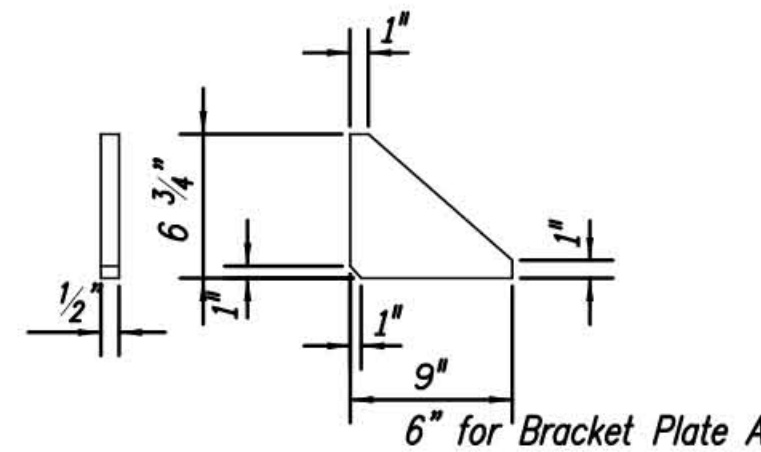
CAMBER DETAIL
N.T.S.

CAMBER NOTE:

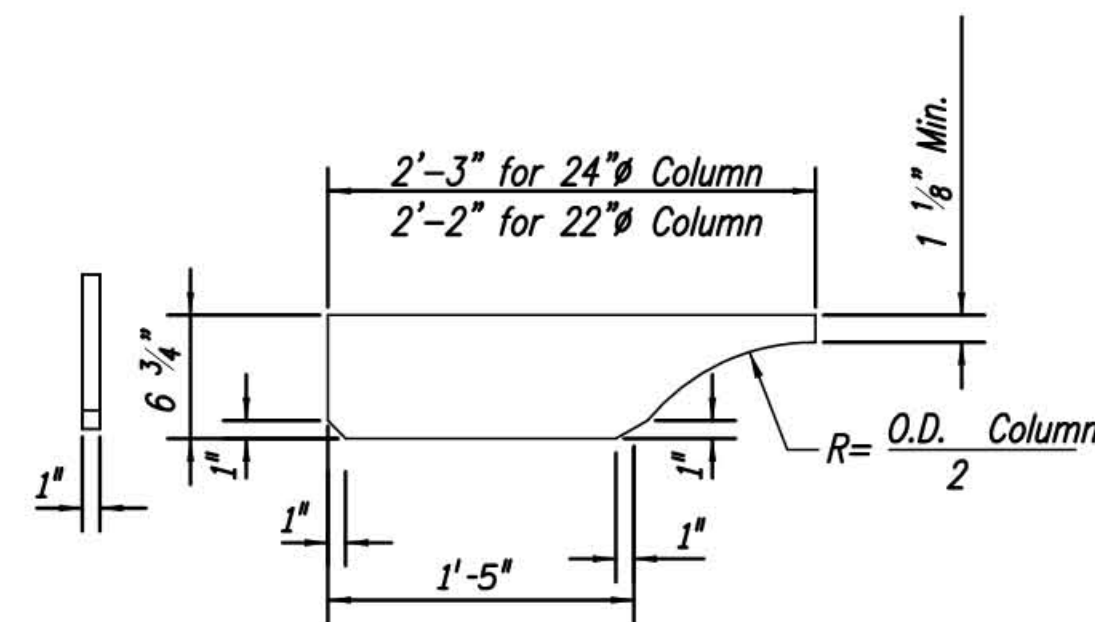
Camber shall be obtained by shortening the length of the top chord stub and extending the length of the bottom chord stub. Chord flange plates shall be skewed accordingly before being welded to the chords. The required camber shall be L/1000 plus the dead load camber. No force shall be applied in providing the camber. An alternate method of cambering may be used as approved by the Engineer.



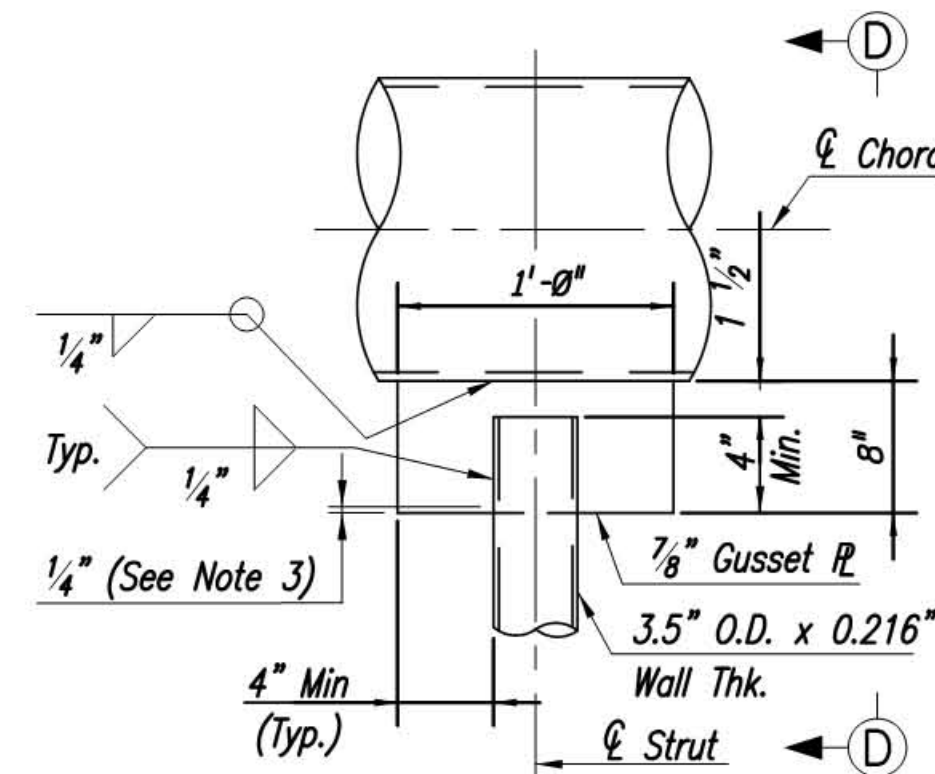
VERTICAL STUB STIFFENER DETAIL
N.T.S.



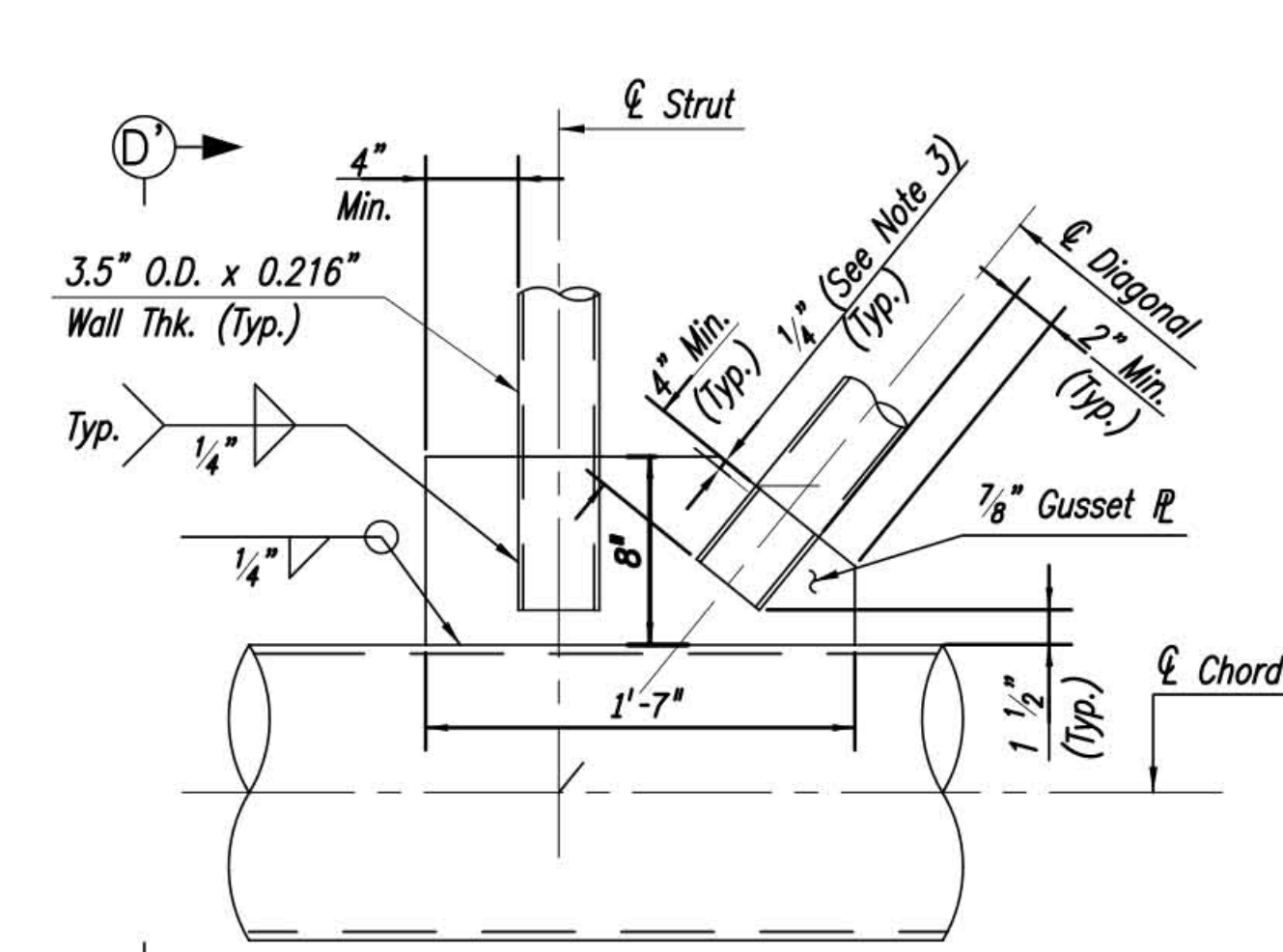
BRACKET PLATE DETAIL
N.T.S.



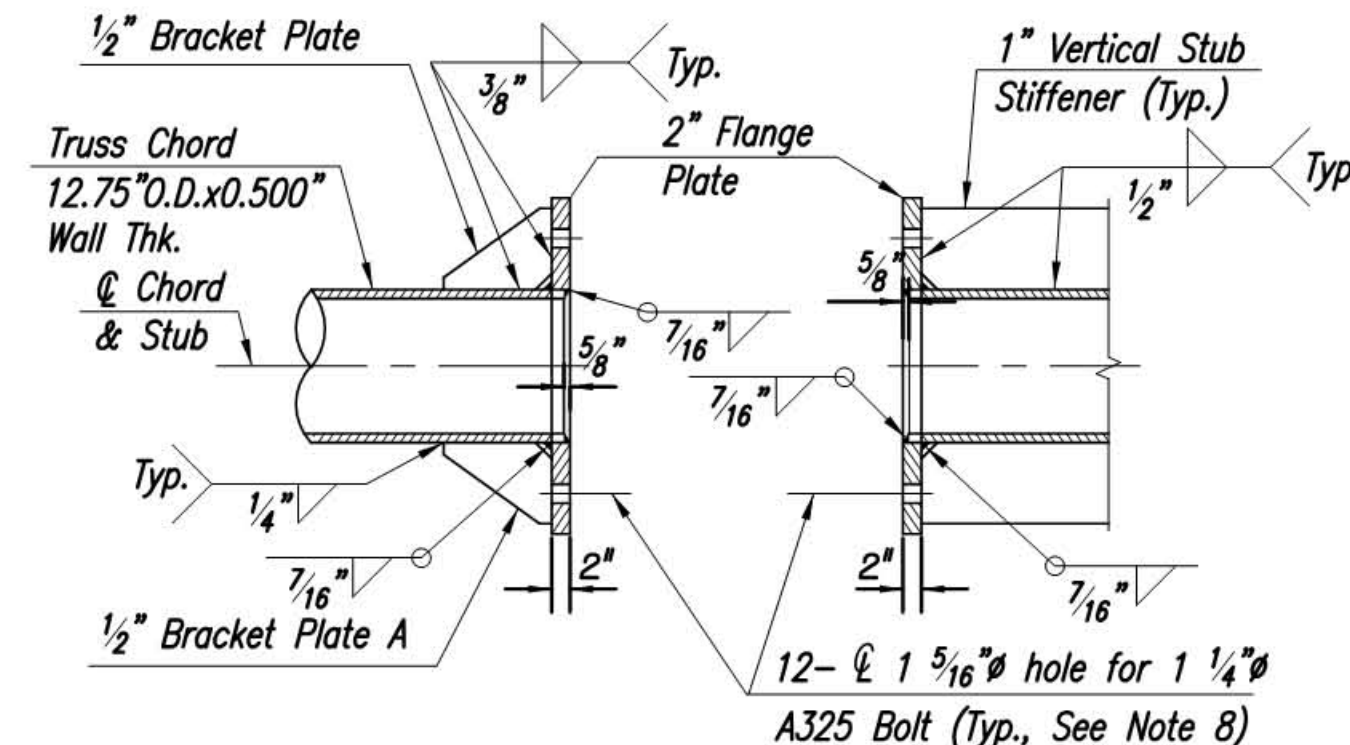
HORIZONTAL STUB STIFFENER DETAIL
N.T.S.



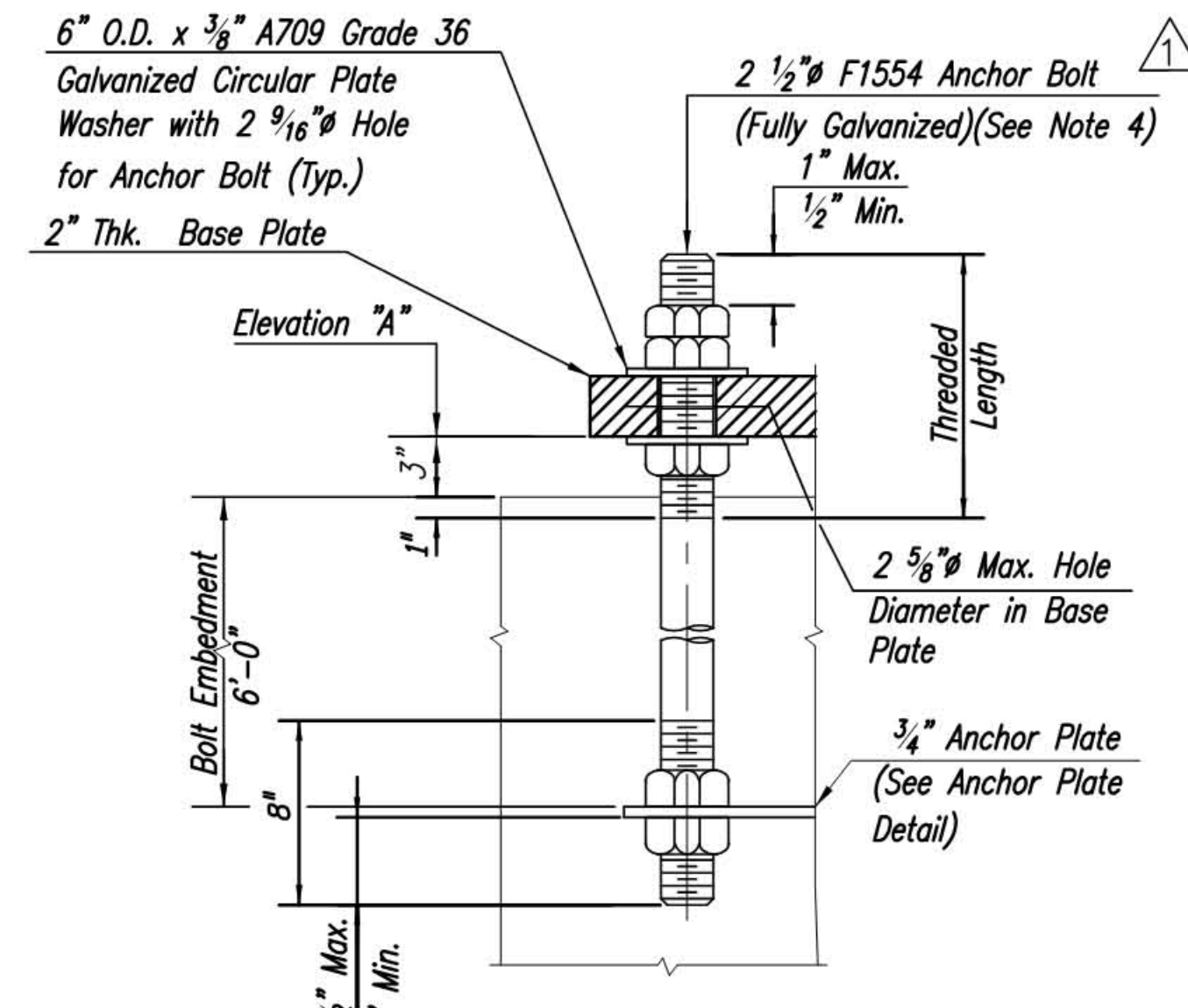
DETAIL 1
1 1/2" = 1'-0"



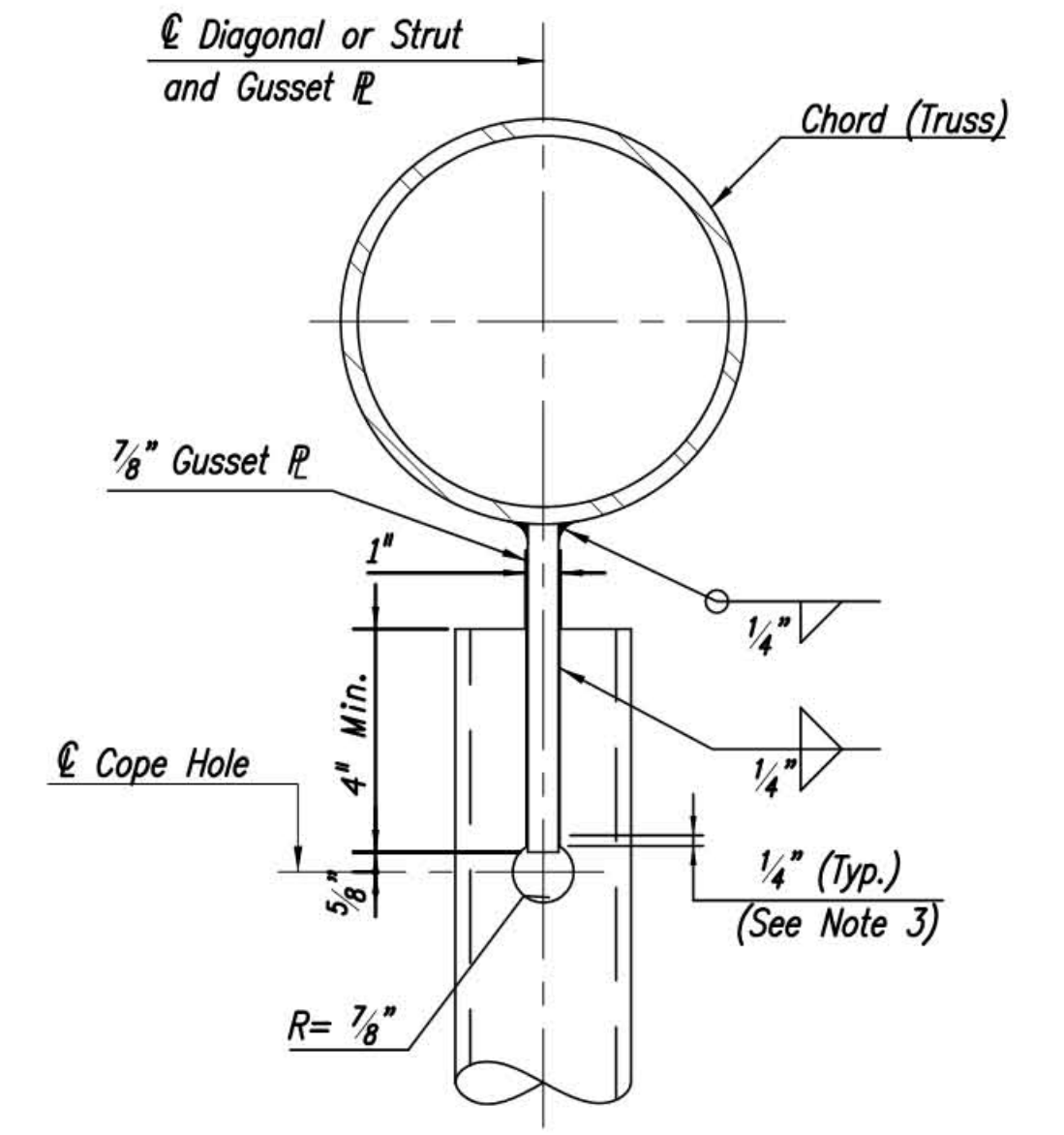
DETAIL 2
1 1/2" = 1'-0"



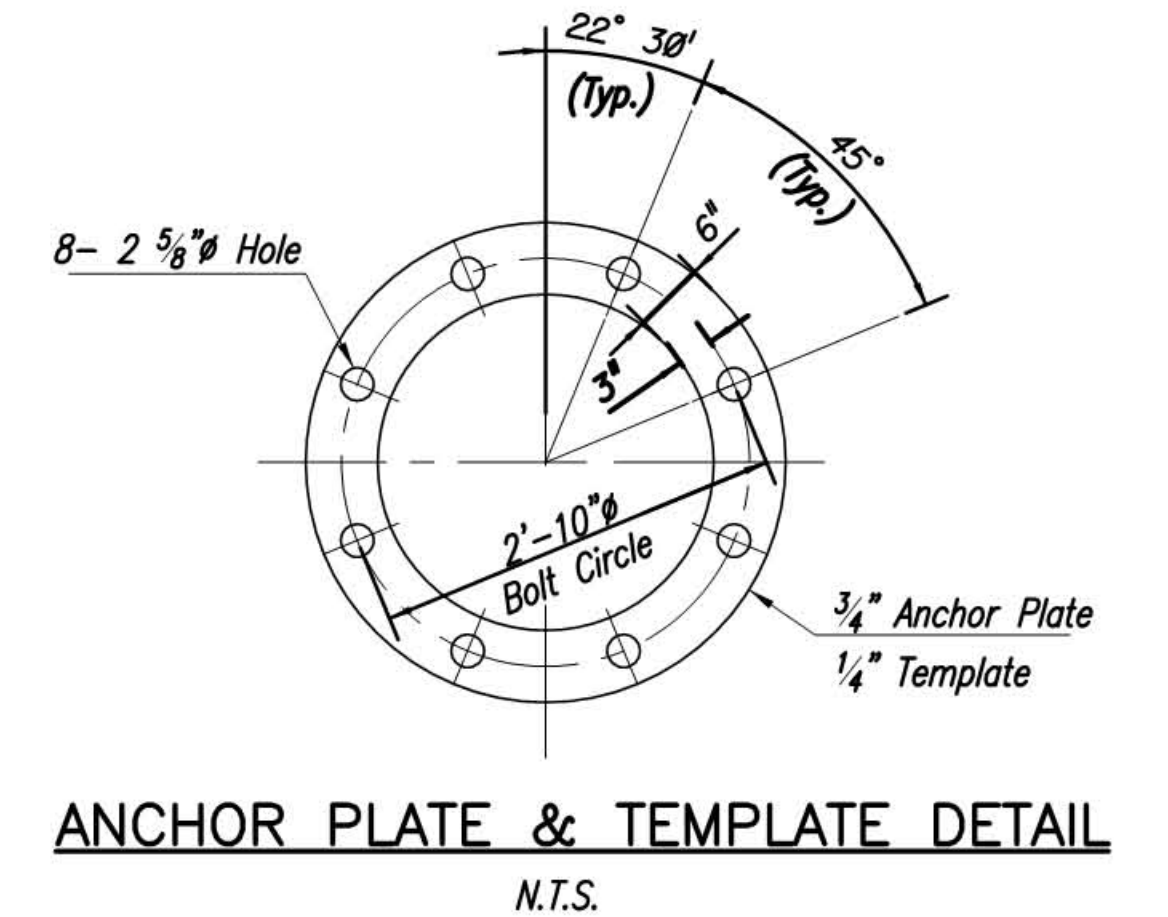
TOP CHORD SPLICE ASSEMBLY WELD DETAIL
3/4" = 1'-0"
(Bottom Chord Similar)



ANCHOR BOLT DETAIL
1 1/2" = 1'-0"



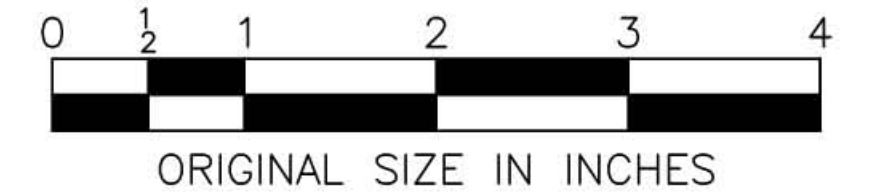
SECTIONS D-D & D'-D'
(Section D'-D' Opposite Hand)
N.T.S.



ANCHOR PLATE & TEMPLATE DETAIL
N.T.S.

NOTES:

- Sign support structures shall conform to Section 406.
- For other details and notes for cantilever sign structures, see Standard Drawing SI-18A.
- Welds for 3.5" O.D. with 0.216" wall thickness pipe to gusset plate connections shall be terminated 1/4 inch from the edge of the gusset plate.
- 2 1/2" diameter anchor bolts shall be provided with heavy hexagon nuts and washers.
- For Elevation "A", see Note 2 on Standard Drawing SI-18A.
- Anchor plate and template shall conform the requirements of ASTM A709 Grade 36.
- Structural steel plates and shapes shall conform to the requirements of ASTM A709, Grade 50W unless otherwise noted.
- 1 1/4" diameter A325 splice bolts shall be required to have 71 kips in tension.
- All bolts shall be provided with heavy hexagon nuts and washers.
- Sign panels shall not cantilever more than 2'-3" past the centerline of the aluminum sign hanger.



ORIGINAL SIZE IN INCHES

NEW JERSEY TURNPIKE AUTHORITY
NEW JERSEY TURNPIKE

CANTILEVER SIGN SUPPORT
STRUCTURES TRUSS
AND POST DETAILS-2

OFFICE OF THE CHIEF ENGINEER
WOODBRIIDGE, NEW JERSEY

2009 STANDARD
DRAWING
SI-18B

	2	5/14	REVISED BUTTERFLY STRUCTURE SIGN HANGERS
	1	12/09	REVISED ANCHOR BOLT ASTM STANDARD
		04/09	ORIGINAL DRAWING
APP. NO.			REVISION

CONTRACT NO.

SHEET NO.

OF