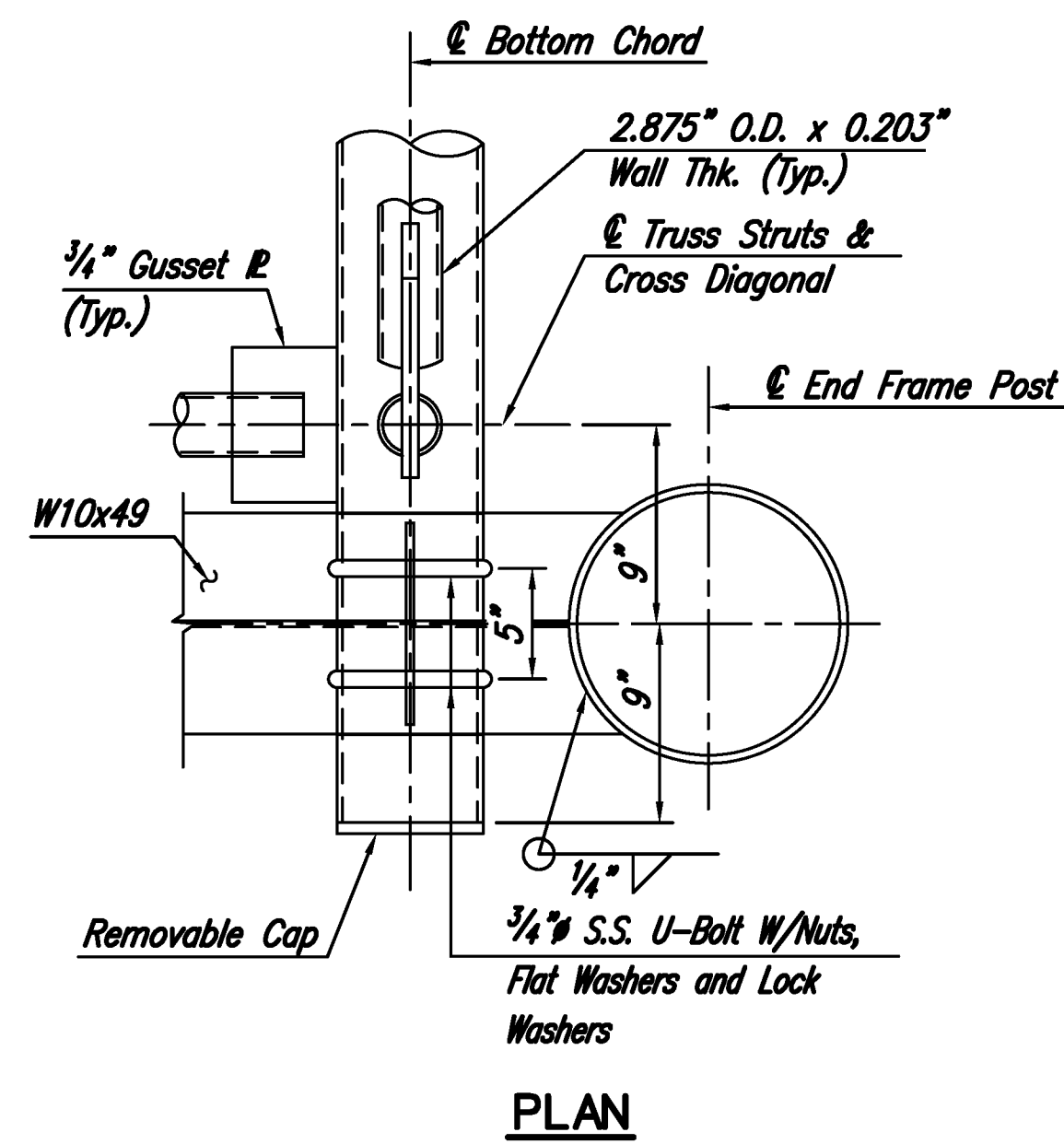
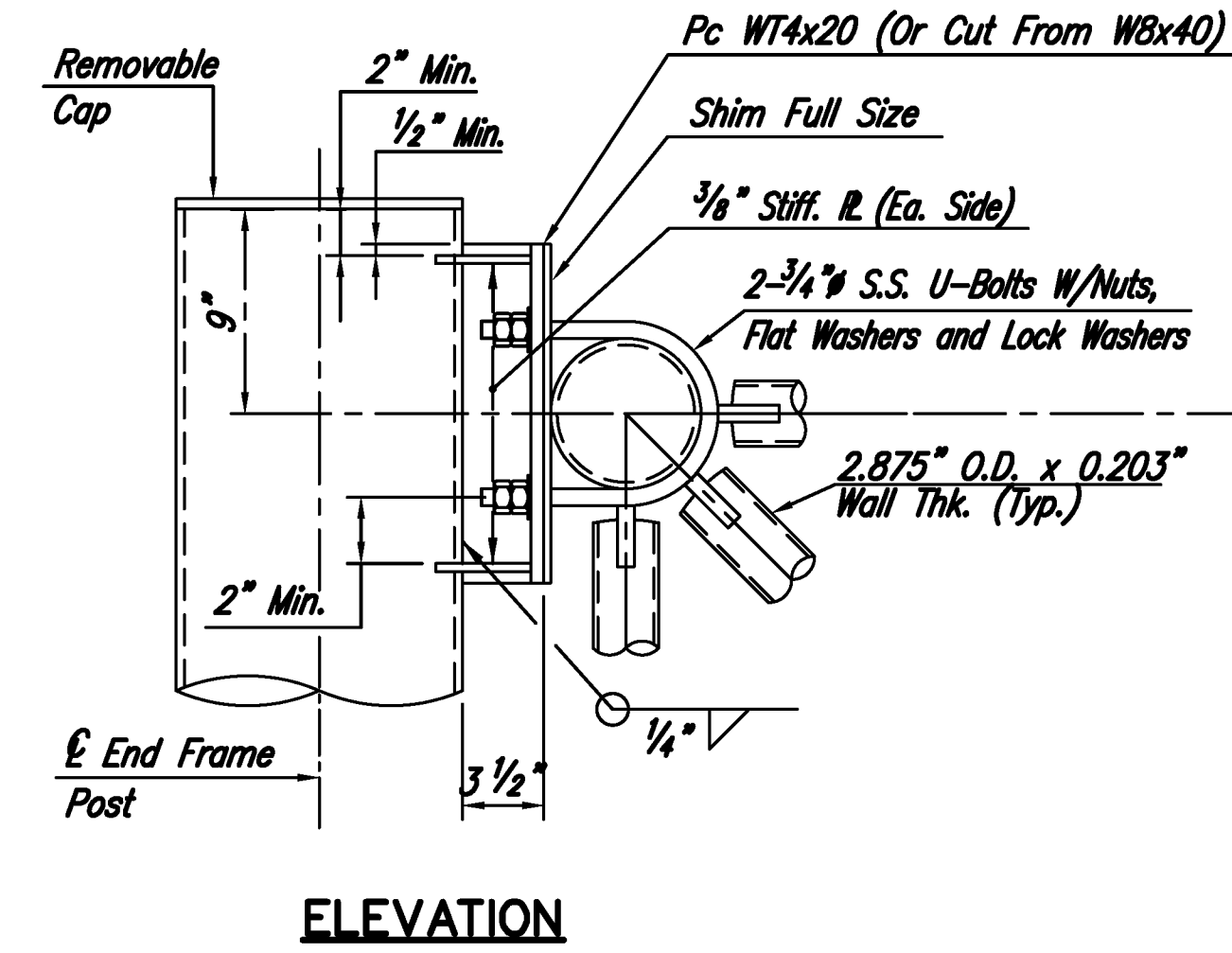


ELEVATION

DETAIL 4
1 1/2" = 1'-0"

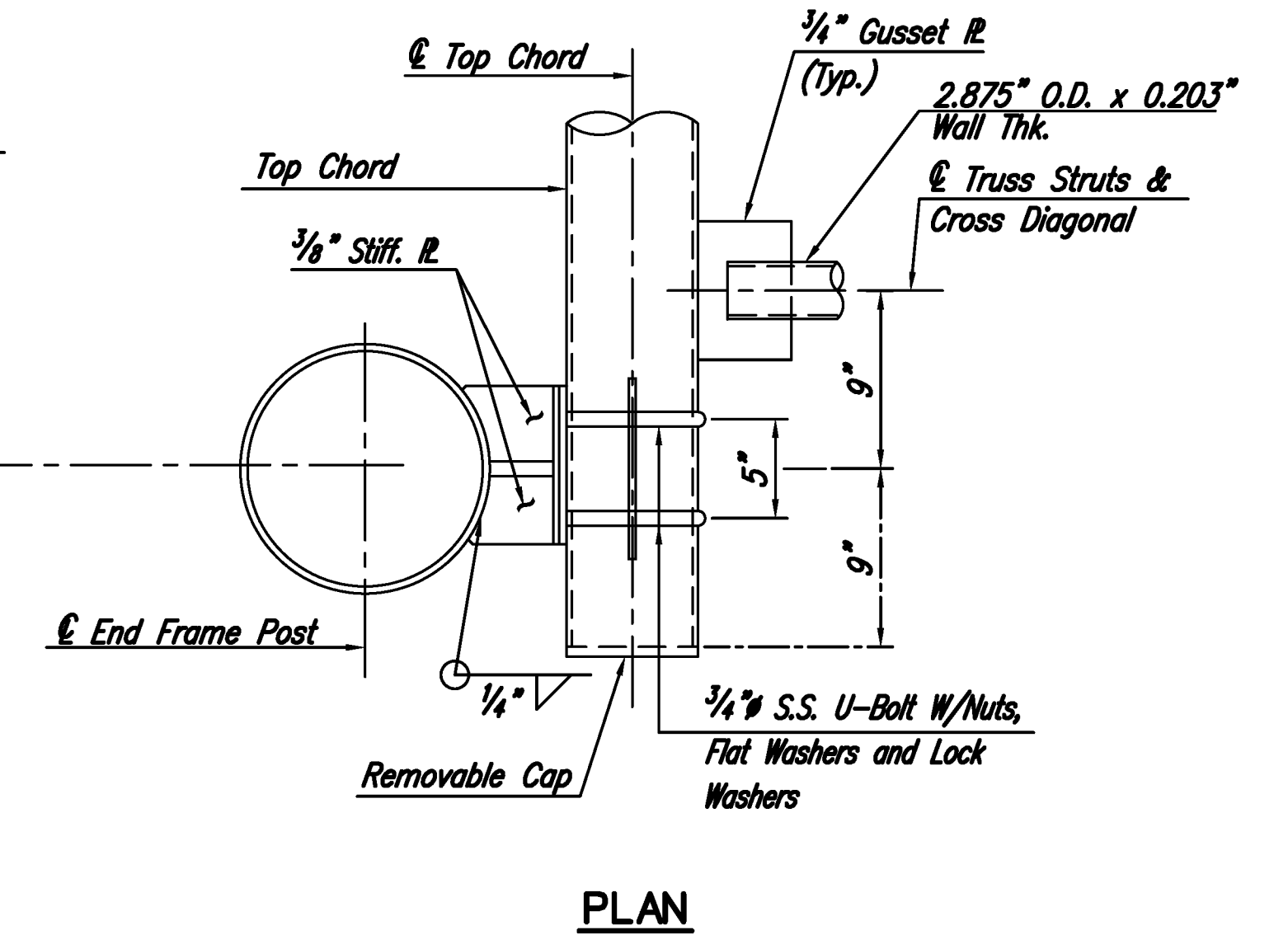


PLAN

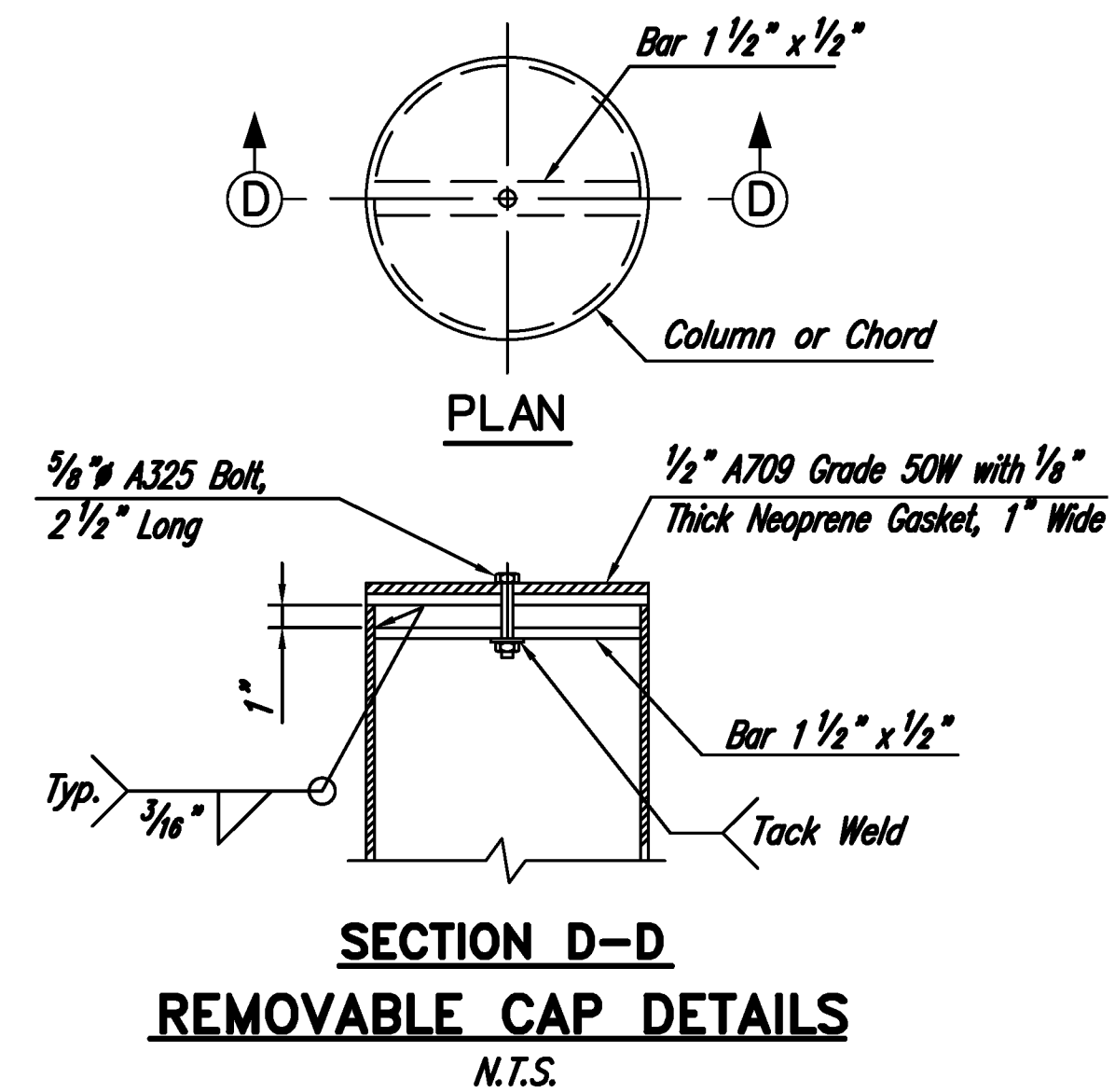


ELEVATION

DETAIL 5
1 1/2" = 1'-0"



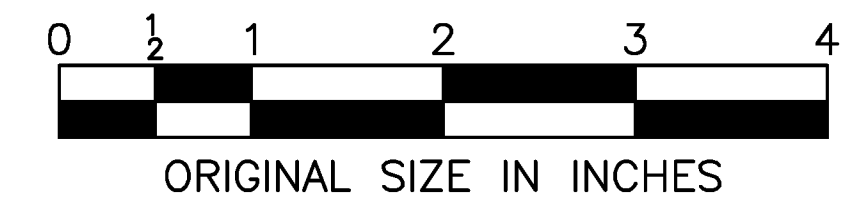
PLAN



SECTION D-D
REMOVABLE CAP DETAILS
N.T.S.

NOTES:

1. Sign support structures shall conform to Section 406.
2. Elevation "A" shall be 4'-0" Min. above the high point of the roadway cross section and shall be the same for both pedestals of each structure.
3. S.S. denotes Stainless Steel.
4. For Truss Connection Details, see Standard Drawing SI-16A.
5. Structural steel plates and shapes shall conform to the requirements of ASTM A709, Grade 50W unless otherwise noted.
6. Pipe for sign support structures shall meet the requirements of either ASTM A714 or ASTM A847. As an alternate, cylindrical tubes produced by forming and longitudinally seam welding steel plates conforming to the requirements of ASTM A709, Grade 50W (A588) or ASTM A242 may be used. Only one longitudinal seam weld permissible per post.
7. For End Frame Detail, Base Plate Details, Anchor Bolt Detail, Anchor Plate and Template Detail, and Details 1 to 3, see Standard Drawing SI-17A.
8. Welds for 3.5" O.D. with 0.216" wall thickness pipe to gusset plate connections shall be terminated 1/4 inch from the edge of the gusset plate.



APP. NO.		04/09	DATE	ORIGINAL DRAWING	REVISION
CONTRACT NO.		SHEET NO.		OF	

NEW JERSEY TURNPIKE AUTHORITY
NEW JERSEY TURNPIKE

SPAN TYPE SIGN STRUCTURE
(STEEL)
END FRAME DETAILS - 2

OFFICE OF THE CHIEF ENGINEER
WOODBRIDGE, NEW JERSEY

2009 STANDARD DRAWING
SI-17B