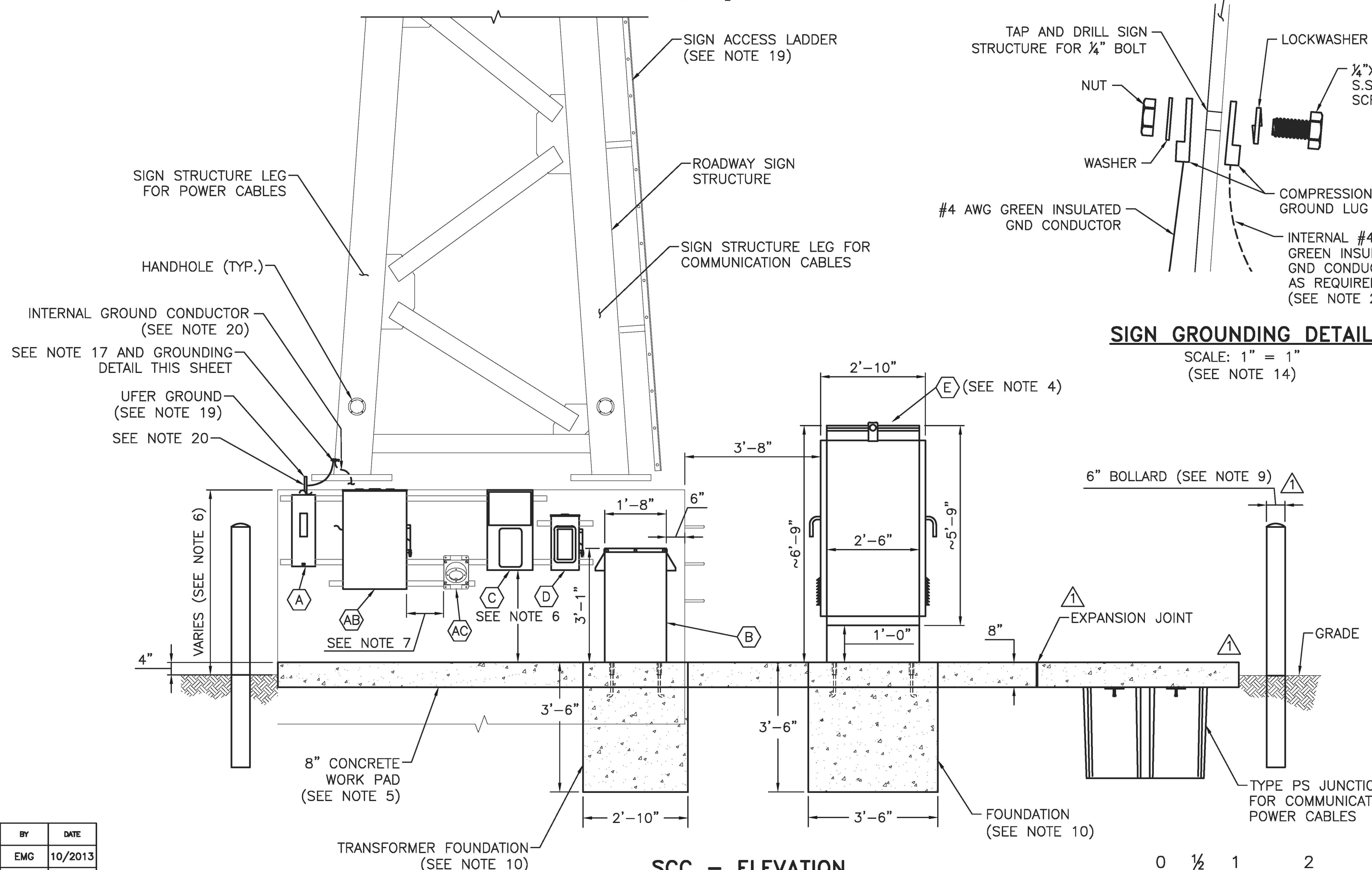
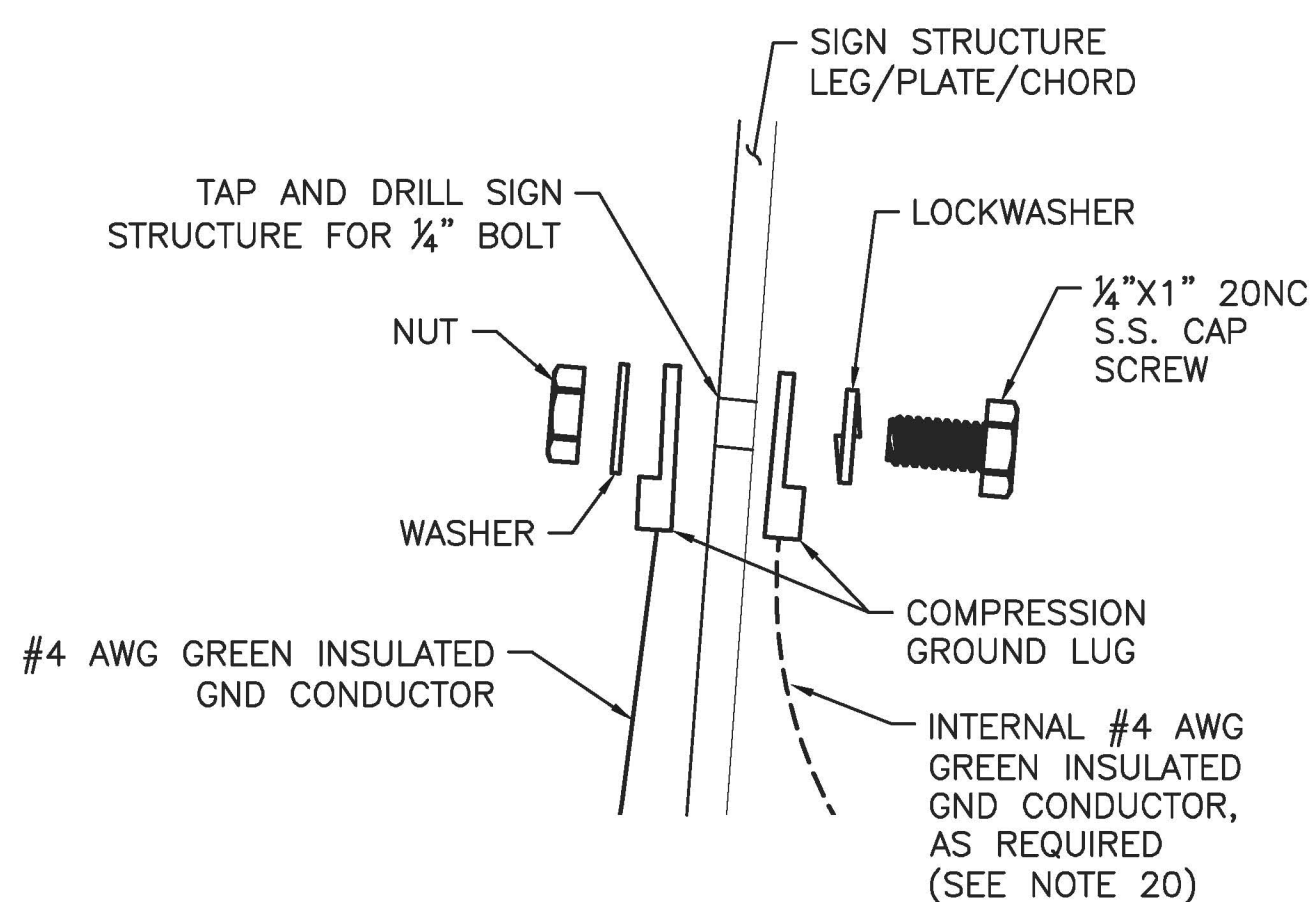


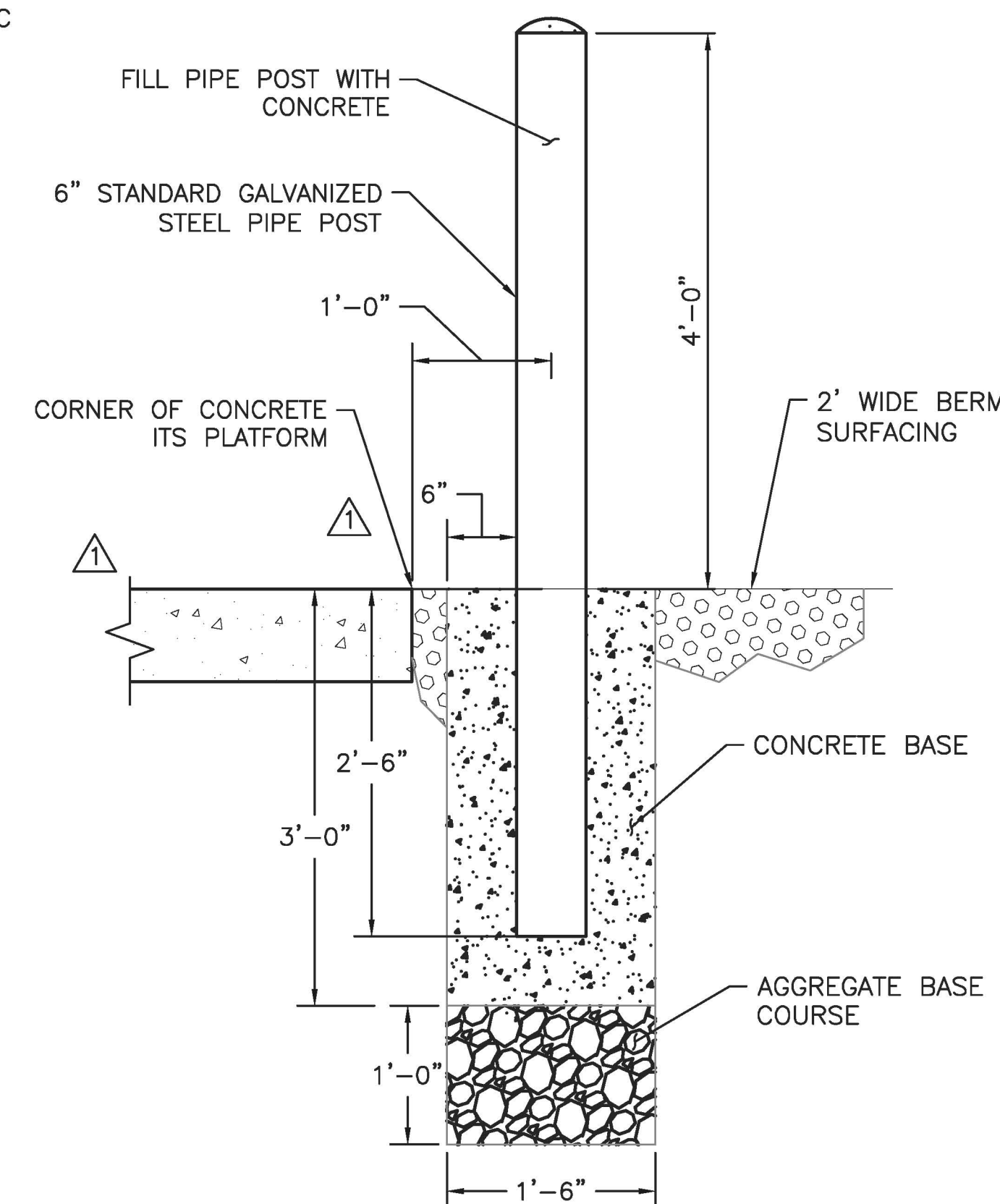
SCC - PLAN
SCALE: 1/2" = 1'-0"



SCC - ELEVATION
SCALE: 1/2" = 1'-0"



SIGN GROUNDING DETAIL
SCALE: 1" = 1"
(SEE NOTE 14)



6" BOLLARD ELEVATION DETAIL
SCALE: 1" = 1'-0"
(SEE NOTE 9)

NOTES:

- FOR LEGEND, ABBREVIATIONS, AND CABLE AND CONDUIT SCHEDULES SEE STANDARD DRAWING ITS-37 AND ITS-38.
- THE ITSS TRANSFORMER AND SCC SHALL BE INSTALLED ON THE SIDE OF THE FOUNDATION OPPOSITE TRAFFIC.
- THERE SHALL BE A MINIMUM OF 3' OF CLEARANCE BETWEEN AND IN FRONT OF ALL ELECTRICAL EQUIPMENT.
- THE SIGN CONTROLLER CABINET SHALL BE MOUNTED SUCH THAT THE BOTTOM OF ITS DOORS ARE A MINIMUM OF 12" ABOVE THE SURFACE OF THE CONCRETE WORK PAD. SEE STANDARD DRAWING ITS-45 FOR DETAILS.
- THE CONCRETE WORK PAD SHALL BE A MINIMUM OF 8" THICK AND SHALL HAVE AN EXPOSED LIP OF 4" ABOVE GRADE. IT SHALL BE CONSTRUCTED WITH A LAYER OF WWF6 x 6-W11 x W11 FABRIC ALONG ITS BOTTOM. THE SIZE AND DEPTH OF THE CONCRETE WORK PAD WILL VARY DEPENDING ON FIELD CONDITIONS. A 6" LAYER OF AGGREGATE COARSE BASE SHALL BE INSTALLED UNDER THE WORK PAD. A FOUNDATION FOR THE SCC AND TRANSFORMER SHALL BE PROVIDED ALONG WITH THE WORK PAD, INCLUDING ANCHOR BOLTS, SIZED AS REQUIRED BY THE MANUFACTURER.
- THE HEIGHT OF THE SIGN FOUNDATION ABOVE GRADE WILL VARY FROM SITE TO SITE AND FIELD CONDITIONS. THE BOTTOM OF ANY ELECTRICAL EQUIPMENT MOUNTED TO THE SIGN FOUNDATION SHALL BE A MINIMUM OF 24" ABOVE THE CONCRETE WORK PAD.
- THE ELECTRICAL EQUIPMENT MOUNTED TO SIGN FOUNDATION FACE SHALL BE ALIGNED ALONG THE LEFT HAND SIDE AND SEPARATED BY 6", AT A MINIMUM, BETWEEN PANELS.
- CONDUIT ROUTING NOT SHOWN ON THIS SHEET FOR CLARITY. SEE CONDUIT DETAILS ON STANDARD DRAWINGS ITS-43.
- BOLLARDS SHALL BE INSTALLED WHERE SHOWN ON THE CONTRACT PLANS.
- EQUIPMENT FOUNDATION(S) SHALL HAVE CONDUIT INSTALLED AS SHOWN IN ITS DETAILS UNLESS DIRECTED OTHERWISE ON THE CONTRACT PLANS. ANCHOR BOLTS SHALL BE INSTALLED AS RECOMMENDED BY THE EQUIPMENT MANUFACTURER.
- JUNCTION BOX SHALL BE INSTALLED A MINIMUM OF 3'-0" FROM SIGN CONTROLLER CABINET.
- CONSTRUCT THE CONCRETE WORK PAD WITH AN EXPANSION JOINT IN-LINE WITH POINT WHERE THE PAD MAKES A 90° BEND AROUND THE SIGN FOUNDATION.
- SEE STANDARD DRAWING ITS-28 FOR DETAILS ON THE TYPE PS JUNCTION BOX. PROVIDE AN EQUIPMENT GROUNDING CONDUCTOR SIZED IN ACCORDANCE WITH THE NATIONAL ELECTRIC CODE.

- EQUIPMENT PLATFORM SHALL BE CONSTRUCTED WITH A 2% SLOPE. FOUNDATIONS SHALL BE CAST SEPARATELY AND RAISED 2" ABOVE CONCRETE PLATFORM.
- GROUND LUG DETAIL SIMILAR FOR CANTILEVER, OVERHEAD, AND BUTTERFLY SIGN STRUCTURES. ALL GROUNDING HARDWARE SHALL BE STAINLESS STEEL.
- WHERE A SEPARATE EQUIPMENT GROUNDING CONDUCTOR IS NOT SHOWN ON THE CONTRACT DRAWINGS, PROVIDE AN EQUIPMENT GROUNDING CONDUCTOR SIZED IN ACCORDANCE WITH THE NATIONAL ELECTRIC CODE.
- GROUND LUG DETAIL SIMILAR FOR CANTILEVER, OVERHEAD, AND BUTTERFLY SIGN STRUCTURES. ALL GROUNDING HARDWARE SHALL BE STAINLESS STEEL.
- WHERE A SEPARATE EQUIPMENT GROUNDING CONDUCTOR IS NOT SHOWN ON THE CONTRACT DRAWINGS, PROVIDE AN EQUIPMENT GROUNDING CONDUCTOR SIZED IN ACCORDANCE WITH THE NATIONAL ELECTRIC CODE.
- UFER GROUND SHALL BE INSTALLED AT SIGN STRUCTURE PEDESTAL AS SHOWN ON STANDARD DRAWING ITS-16.
- #4 AWG GREEN INSULATED GROUND CONDUCTOR SHALL BE INSTALLED INSIDE THE CONDUIT (10). ONE END OF THE GROUND CONDUCTOR SHALL BE BONDED TO SCC GROUND ROD AND THE OTHER END SHALL BE TAPPED INSIDE THE SIGN STRUCTURE LEG.

	BY	DATE
MADE	EMG	10/2013
TRACED	MDC	10/2013
CHECKED	EMG	10/2013
SUPERVISED	ALB	10/2013



APP. NO.	DATE	REVISION
1	5/2014	REVISED WORK PAD
0	11/2013	ORIGINAL DRAWING

NEW JERSEY TURNPIKE AUTHORITY
NEW JERSEY TURNPIKE
 ITS EQUIPMENT PLATFORM
 TYPE 5 DETAILS - 2

HNTB 9 ENTIN ROAD, SUITE 202, PARSIPPANY, NJ 07054 - COA# 24GA28000700
ANTHONY L. BARTELLO
 New Jersey Professional Engineer License No. GE 45842

STANDARD DRAWING ITS-44