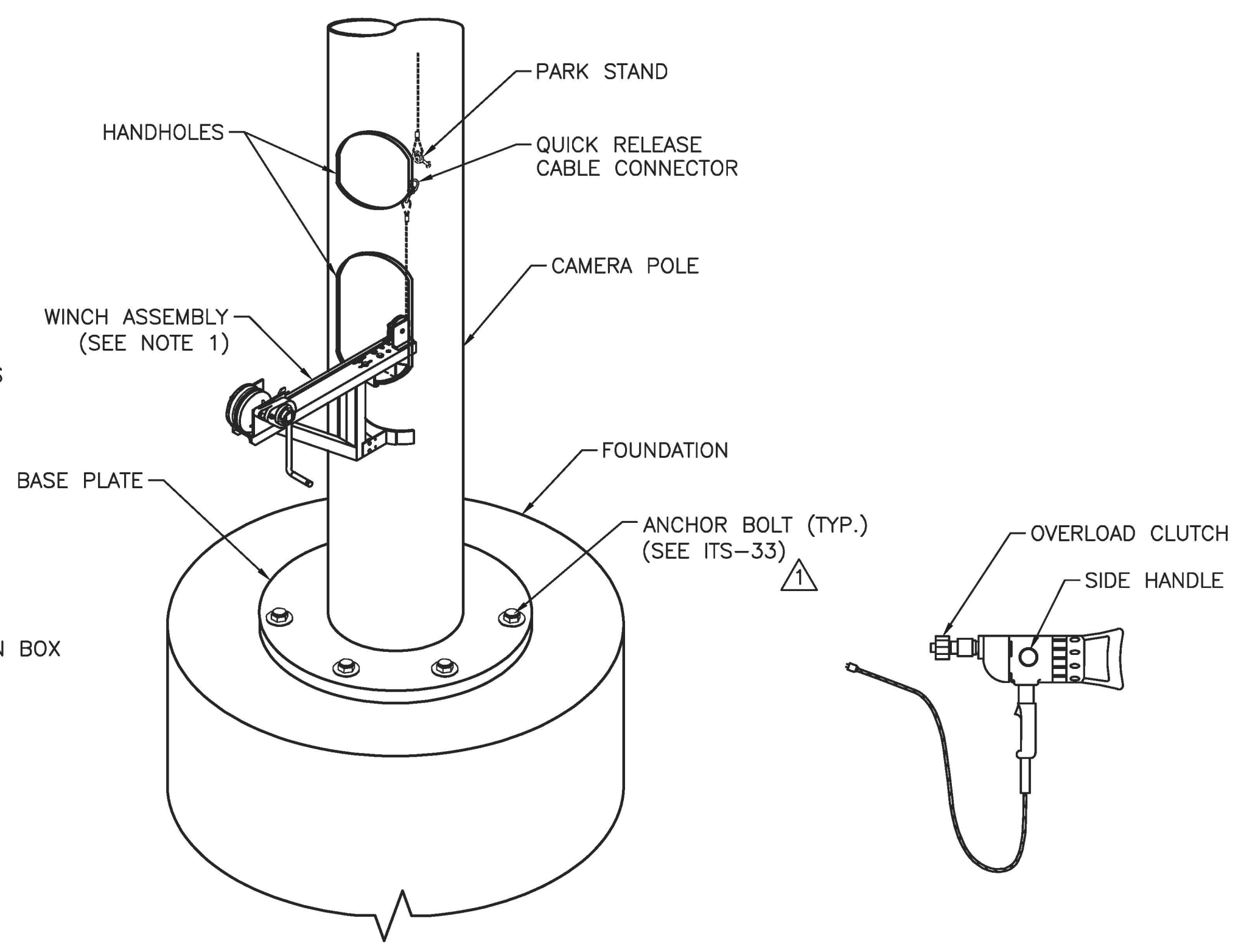
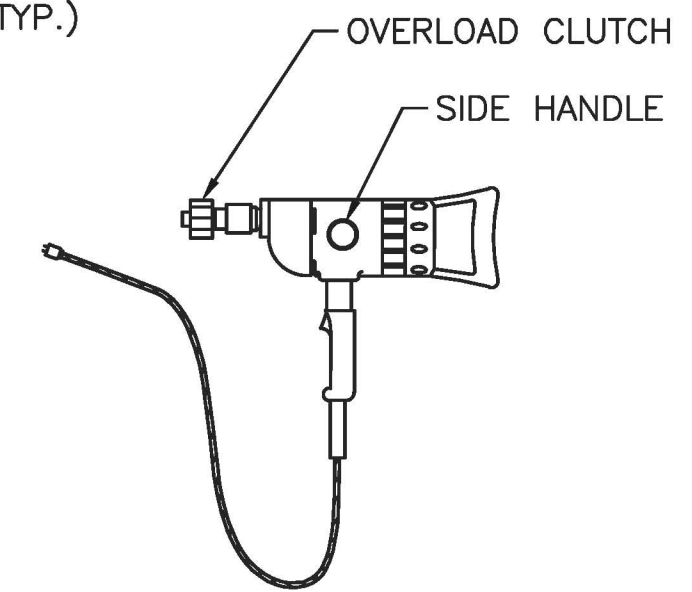


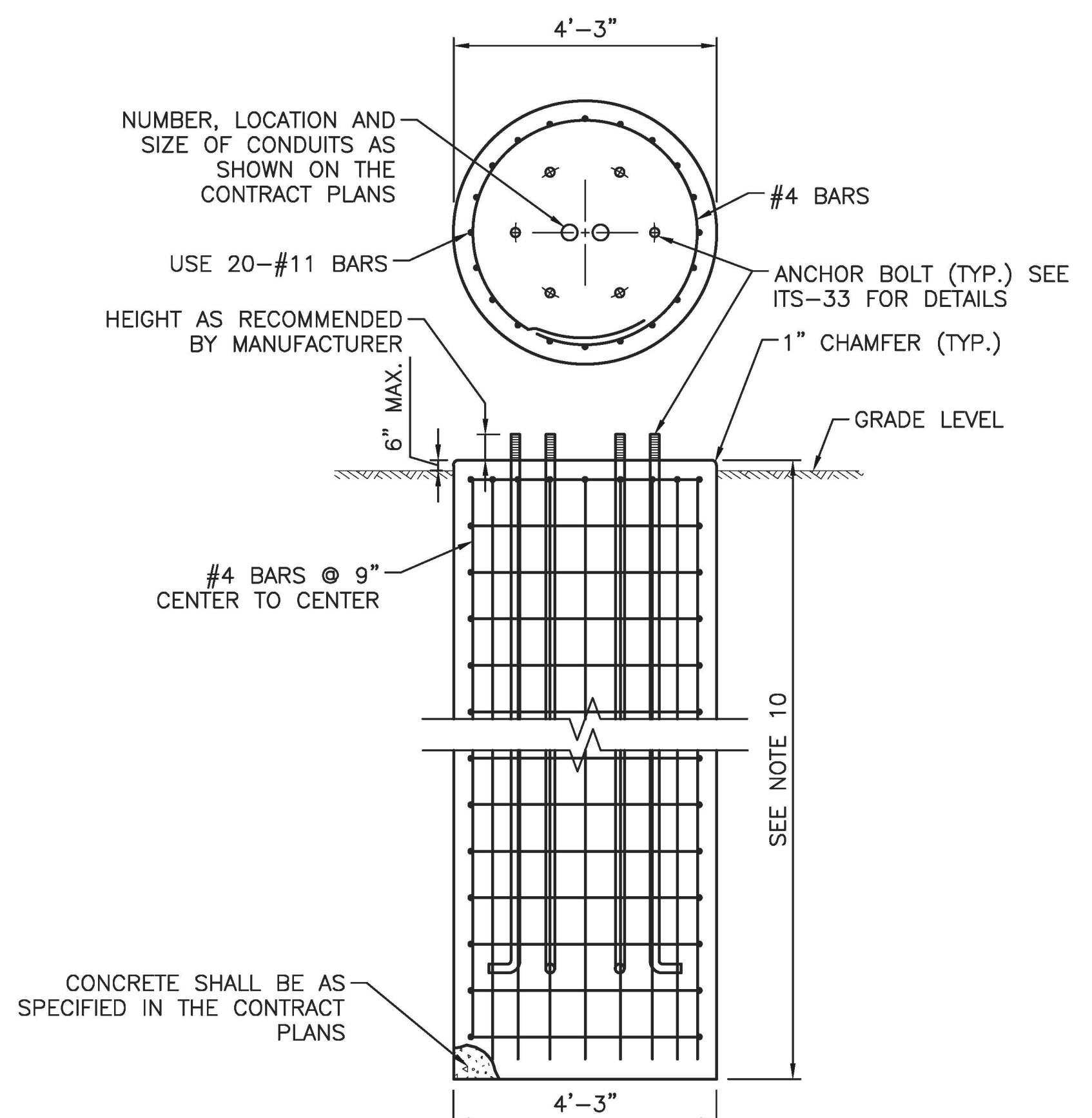
LOWERING DEVICE DETAIL
N.T.S.



WINCH ASSEMBLY DETAIL
(POLE MOUNTED ITS ENCLOSURE NOT SHOWN FOR CLARITY)
LOWERING TOOL
(SEE NOTE 7)
N.T.S.



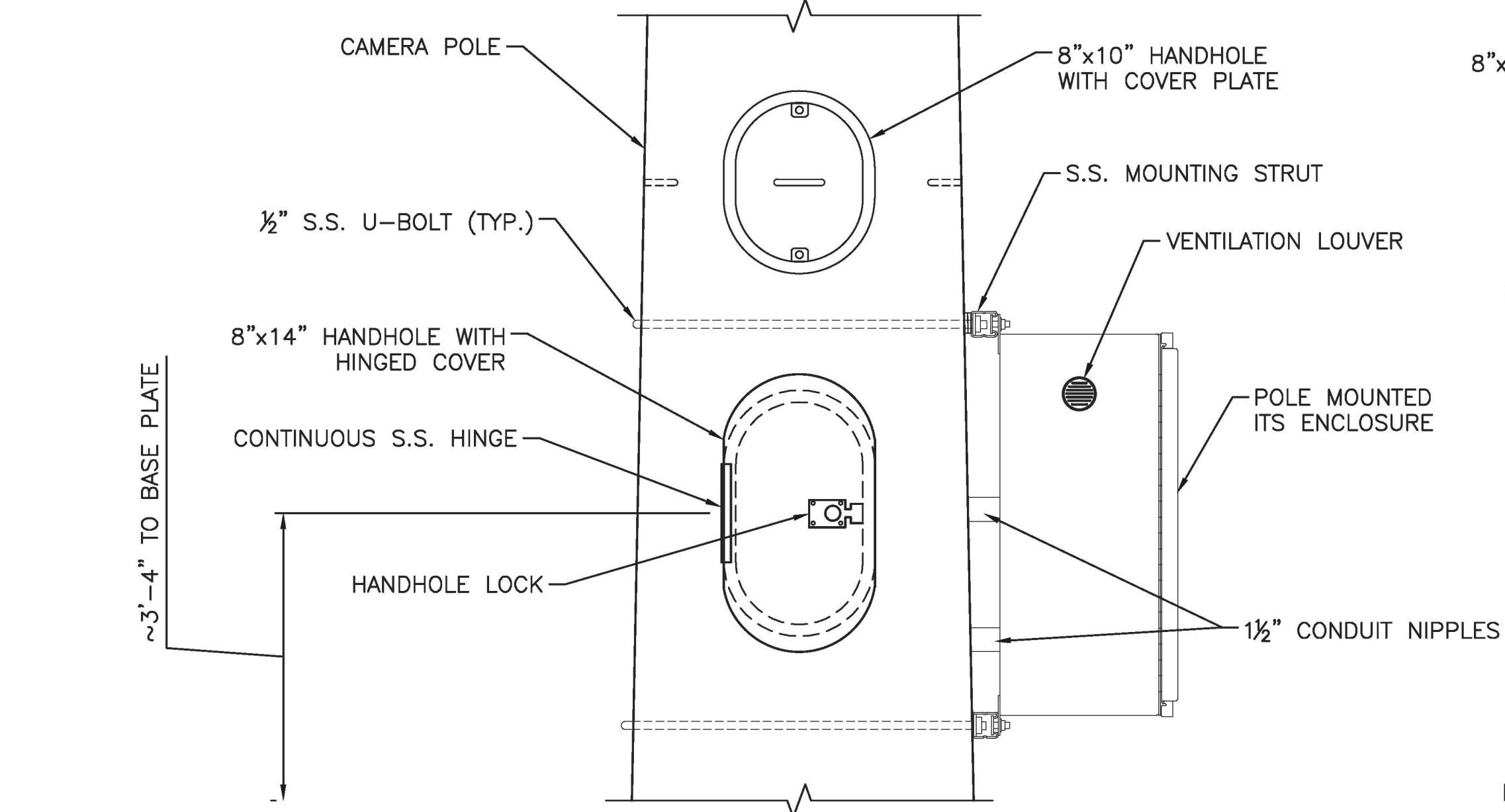
1/2" REVERSIBLE DRILL



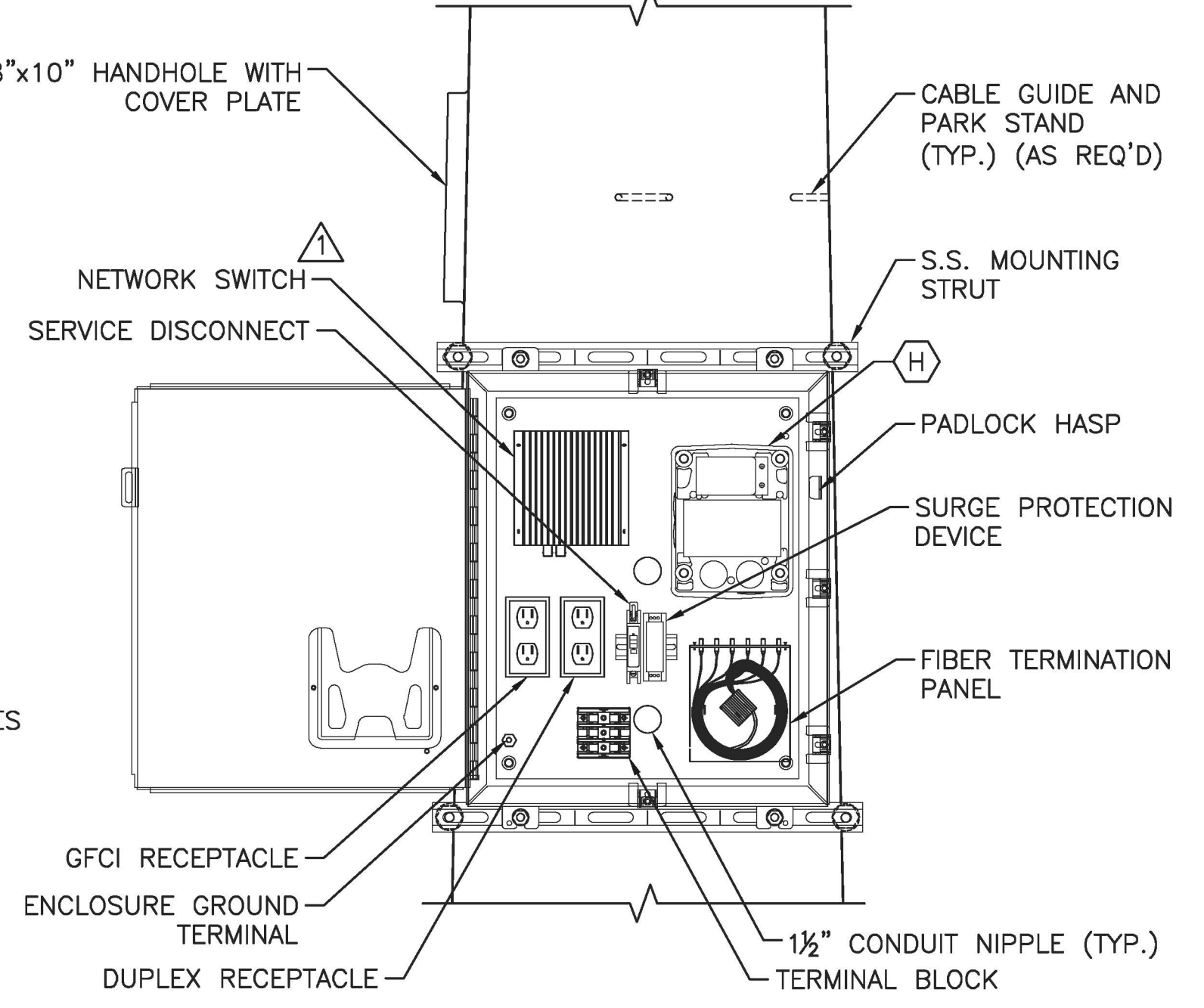
FOUNDATION
(SEE NOTE 10 AND 11)
SCALE: 1/2" = 1'-0"

NOTES:

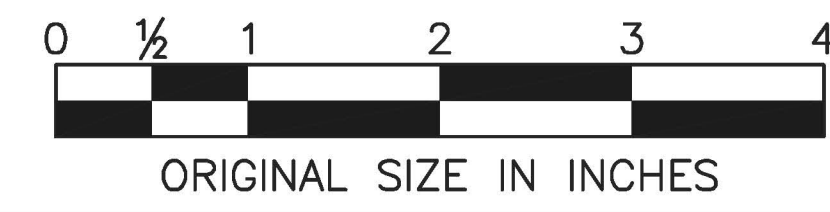
- PROVIDE SEALED, SELF LUBRICATED BEARINGS, OIL TIGHT BRONZE BEARINGS OR SINTERED BRONZE BUSHINGS WITH ALL PULLEYS FOR THE CAMERA LOWERING DEVICE AND PORTABLE LOWERING TOOL.
- ENSURE THE LOWERING CABLE HAS A MINIMUM OF 1/8" DIAMETER STAINLESS STEEL AIRCRAFT CABLE WITH A MINIMUM BREAKING STRENGTH OF 1740 POUNDS WITH (7) STRANDS OF 19 GAUGE WIRE EACH.
- PROTECT ALL ELECTRICAL AND VIDEO COAXIAL CONNECTIONS BETWEEN THE FIXED AND LOWERABLE PORTION OF THE SUSPENSION DISCONNECT UNIT FROM EXPOSURE TO THE WEATHER WITH A WATERPROOF SEAL TO PREVENT DEGRADATION OF THE ELECTRICAL CONTACTS.
- NETWORK AND POWER CABLES SHALL BE BELDEN 7937A (OAE) WITH RJ-45 MALE CONNECTORS AND BELDEN 601196 (OAE).
- PROVIDE INTERFACE AND LOCKING COMPONENTS MADE OF STAINLESS STEEL.
- ENSURE THE SUSPENSION DISCONNECT UNIT HAS LOAD CAPACITY OF 200 POUNDS WITH A MINIMUM OF 4 TO 1 SAFETY FACTOR.
- SUPPLY AN ADAPTOR FOR A STANDARD 1/2" ELECTRIC DRILL BIT.
- SUBMIT WINCH ASSEMBLY AND CAMERA CABINET ENCLOSURE MOUNTING DETAILS FOR APPROVAL.
- THE AIR TERMINAL LIGHTNING ROD SHALL BE ATTACHED TO THE POLE AND PROVIDED WITH A GROUND LUG AT THE TOP PLATE. COPPER CABLE SHALL BE BARE-COPPER #4/0 AWG MINIMUM.
- DESIGN OF FOUNDATION SHALL BE AS PER CONTRACT PLANS. FOUNDATION DETAIL NOT FOR CONSTRUCTION.
- THE DRILLED SHAFT DIAMETER SHOWN ON THIS STANDARD DRAWING IS REPRESENTATIVE OF A TYPICAL CCTV CAMERA FOUNDATION. LARGER DRILLED SHAFT DIAMETERS MAY BE REQUIRED AS DICTATED BY LOCAL GEOTECHNICAL CONDITIONS. IT IS THE RESPONSIBILITY OF THE DESIGN ENGINEER TO DESIGN THE DRILL SHAFT DIAMETER, DEPTH, AND REINFORCEMENT.
- PAYMENT FOR FURNISHING AND INSTALLATION OF THE AIR TERMINAL WILL BE INCLUDED IN THE PAY ITEM "CCTV CAMERA, POLE MOUNTED WITH LOWERING DEVICE".



POLE MOUNTED ITS ENCLOSURE, SIDE ELEVATION
SCALE: 1/2" = 1'-0"



POLE MOUNTED ITS ENCLOSURE, FRONT ELEVATION
SCALE: 1/2" = 1'-0"



ORIGINAL SIZE IN INCHES

BY	DATE
DR	08/2010
GMS	08/2010
MS	08/2010
ALB	08/2010

APP. NO.	DATE	REVISION
1	5/2014	DIGITAL CCTV ADDED
C	10/2013	CONFORMED DRAWING

NEW JERSEY TURNPIKE AUTHORITY
NEW JERSEY TURNPIKE
CCTV CAMERA, POLE MOUNTED WITH LOWERING DEVICE DETAILS - 2

HNTB 9 ENTIN ROAD, SUITE 202, PARSIPPANY, NJ 07054 - COA# 24GA28000700
ANTHONY L. BARTELLO
New Jersey Professional Engineer License No. GE 45842

STANDARD DRAWING ITS-34