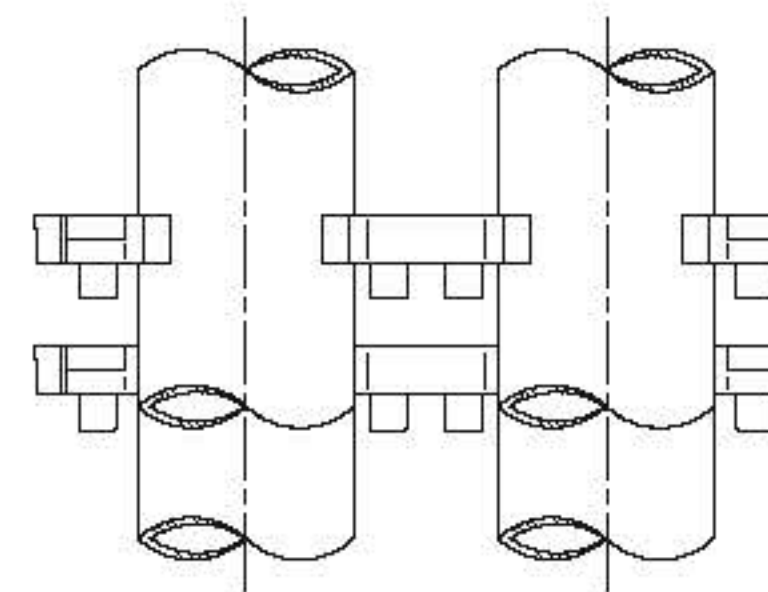
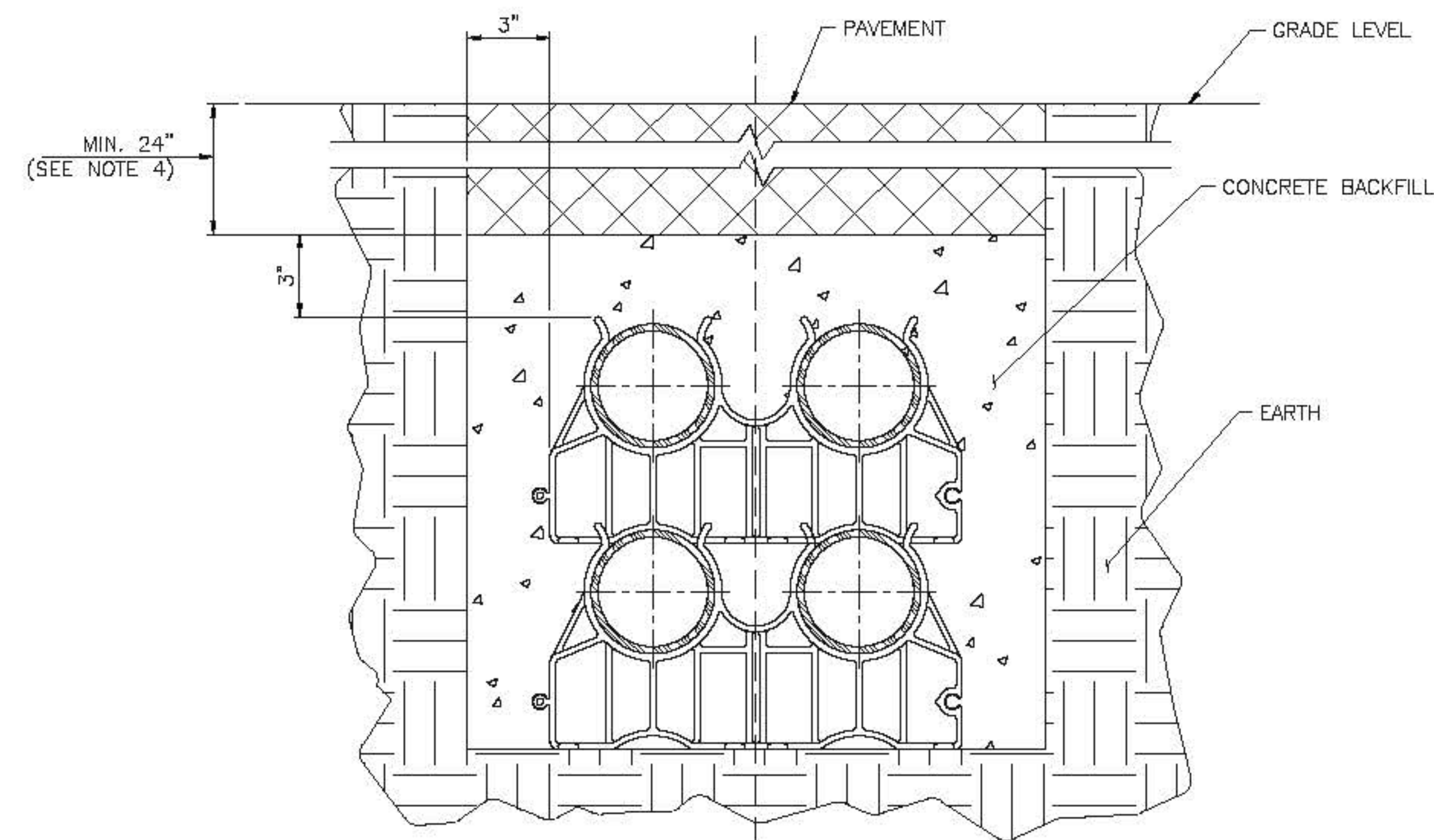


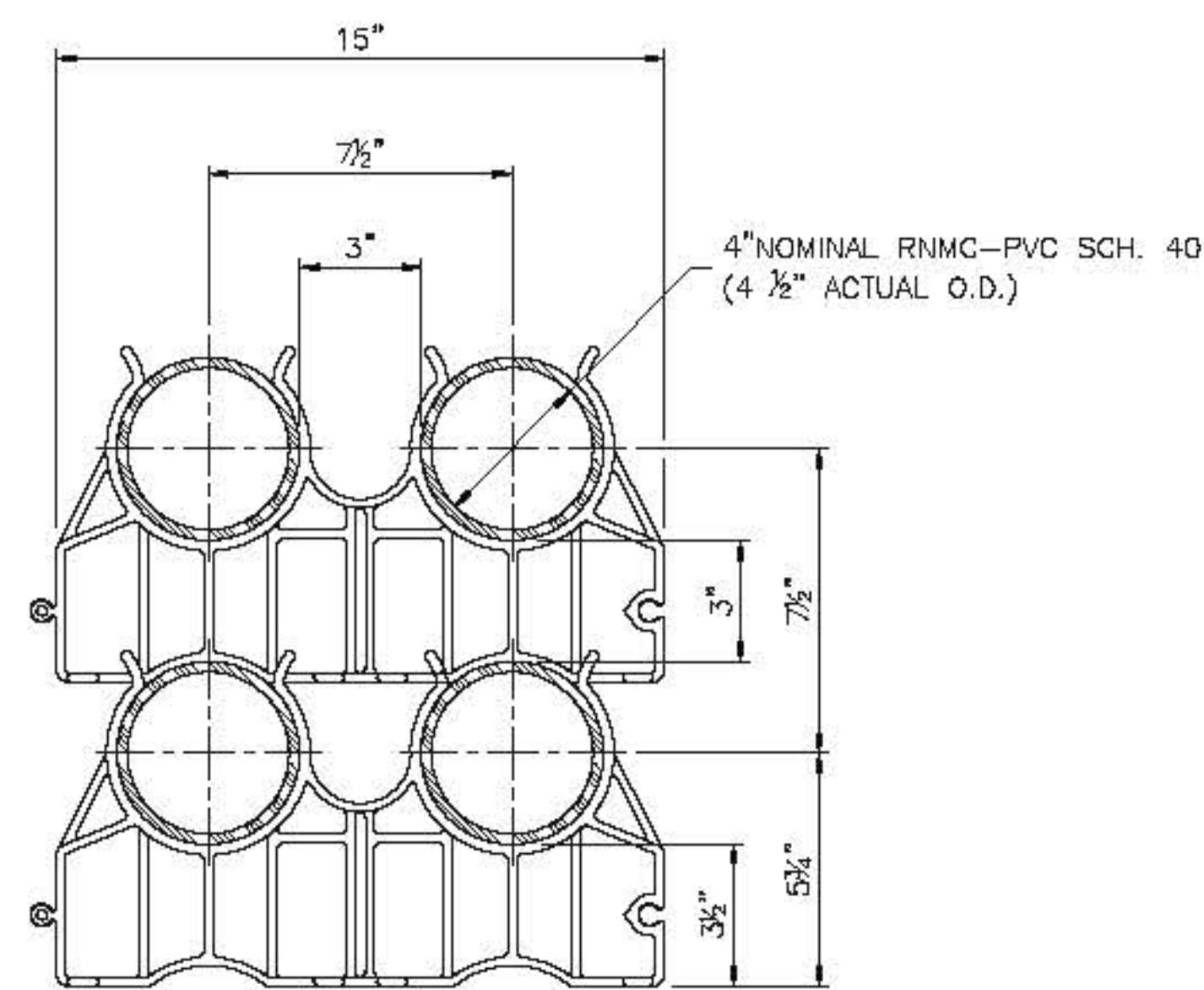
**4-WAY POWER/COMM. DUCT BANK,  
SOIL ENCASED**  
SCALE: 3" = 1'-0"



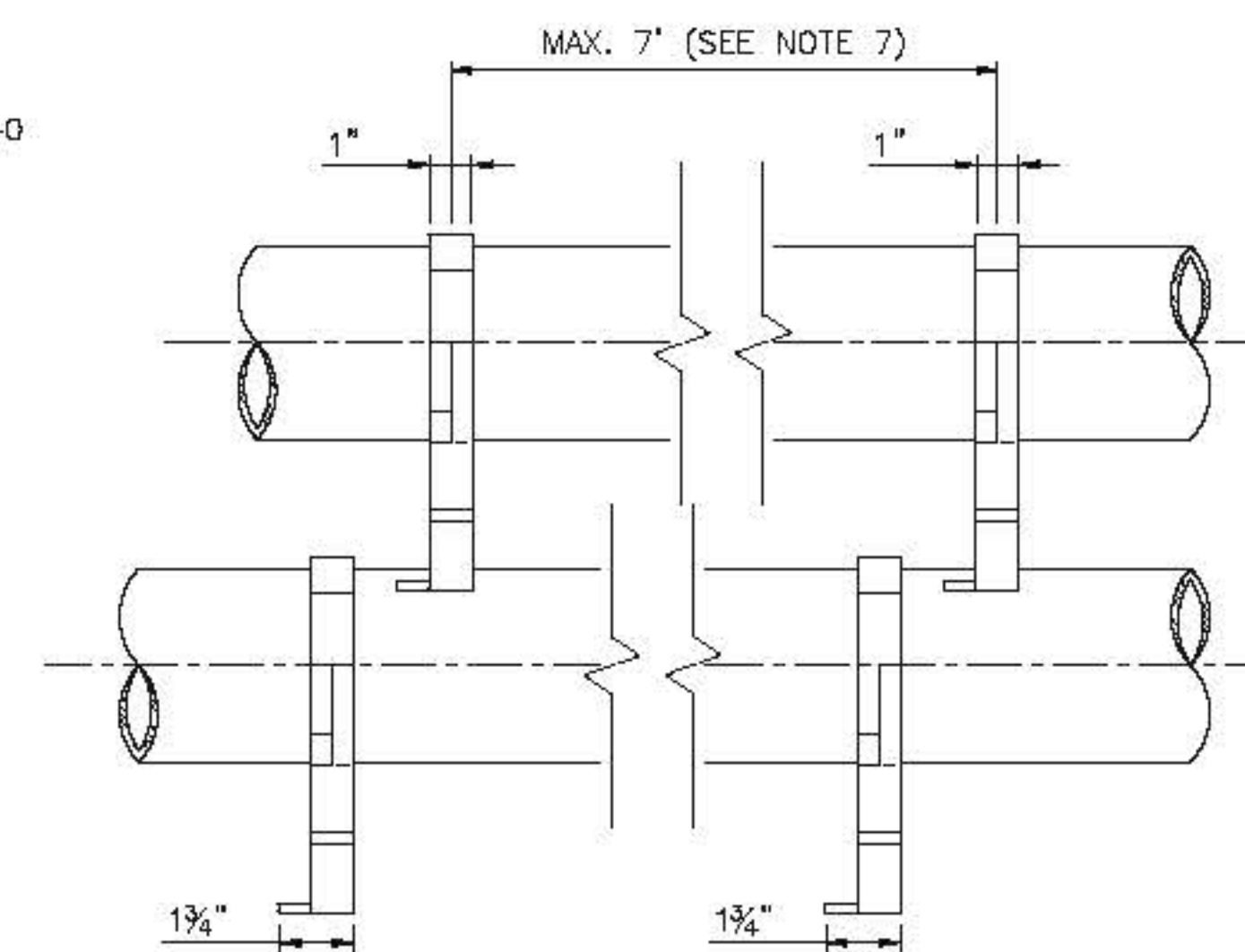
**TOP VIEW**  
SCALE: 3" = 1'-0"



**4-WAY POWER/COMM. DUCT BANK,  
CONCRETE ENCASED**  
SCALE: 3" = 1'-0"



**FRONT VIEW**  
SCALE: 3" = 1'-0"

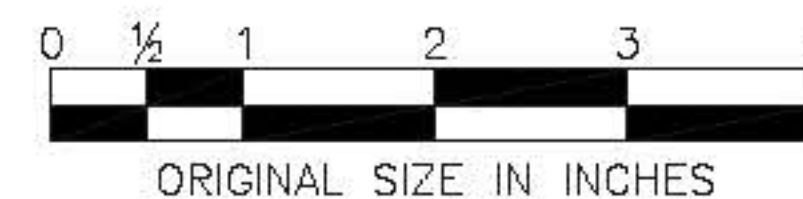


**SIDE VIEW**  
SCALE: 3" = 1'-0"

**NOTES:**

1. CONCRETE SHALL BE OF CLASS C, 3500 P.S.I. @28 DAYS OR AS SPECIFIED BY THE ENGINEER.
2. DUCT BANK SHALL BE BURIED TO A MINIMUM OF 24" BELOW GRADE.
3. THE MINIMUM SPACING BETWEEN POWER/ELEC AND COMMUNICATIONS CONDUITS SHALL BE 6" FOR DIRECT BURIED AND 3" FOR CONCRETE ENCASED.
4. CONDUITS SHALL BE FOUR (4) 4" RIGID NON-METALLIC PVC SCHEDULE 40.
5. MAXIMUM LATERAL SPACING BETWEEN SPACERS SHALL BE 7 FT.
6. DUCT BANK UNDER SHOULDER SHALL BE CONCRETE ENCASED, WHEREAS DUCT BANK UNDER THE GRASS AREA SHALL BE SOIL ENCASED, UNLESS OTHERWISE NOTED ON THE PLANS.
7. SPACERS SHALL ONLY BE INSTALLED WHEN DUCT BANK IS CONCRETE ENCASED.
8. DUCT BANKS OF 2, 6, 8, OR OTHER CONDUIT PAIRS SHALL BE CONSTRUCTED USING THE SAME DETAILS, DIMENSIONS, AND APPROACH AS THE 4-WAY DUCT BANKS SHOWN ON THIS STANDARD DRAWING.
9. CONDUITS SHALL BE SEPARATED VERTICALLY FOR COMMUNICATIONS AND POWER WHERE DUCT BANK IS INSTALLED. SEE STANDARD DRAWING ITS-29 TO COORDINATE DUCT BANK WITH INSTALLATION OF JUNCTION BOX TYPE PS.

	BY	DATE
MADE	AG	08/2010
TRACED	GS	08/2010
CHECKED	MS	08/2010
SUPERVISED	ALB	08/2010



APP.	NO.	DATE	REVISION
C	10/2013		CONFORMED DRAWING

NEW JERSEY TURNPIKE AUTHORITY <b>NEW JERSEY TURNPIKE</b>	
DUCT BANK DETAILS	
<b>HNTB</b> 9 ENTH ROAD, SUITE 202, PARSIPPANY, NJ 07054 - COA# 24G28000700 <b>ANTHONY L. BARTELLO</b> <i>Anthony L. Bartello</i> <small>New Jersey Professional Engineer License No. 0E 40202</small>	<b>STANDARD DRAWING</b> <b>ITS-27</b>
CONTRACT NO.	SHEET NO. OF